



INCOTEC
C A R G O

PROJECT CARGO TRANSPORTATION

**Across Time and
Distance...**

INCOTEC GROUP was founded in 1992



The structure of INCOTEC GROUP was originally created with the aim of provision the utmost effective coordination between all sectors of transportation process.



INCOTEC GROUP
consisted of the
following
departments:

Port Forwarding Department



Multimodal Transportation Department



Railway Transportation Department



Shipping Agency Department



Survey Department



Inland Trucking Department



Customs Clearance Department



Project Cargo Transportation Department



In the year of 2001, September
28th, this department got its
legal name

INCOTEC CARGO Ltd.

Since that time

INCOTEC CARGO

has arranged transportation of
many projects.

Let us describe some of them.

The year of 2005.

Customer: Kirishinefteorgsintez (KINEF)



Multimodal transportation of 23 reactors and columns to the job site.



Weight up to 1065 MT each, length up to 69 m. and diameter up to 10,5 m.



The 1st shipment arrived at the port of St. Petersburg in May on board of geared vessel equipped with 2 cranes by 900 MT SWL each.



Design works had been carried out and as a result 2 types of barges had been refitted as Roll-on/Roll-off (Ro-Ro) for this very shipment.



These barges delivered the cargo to berth in Kirishi, which has been specially built for this equipment receipt. All handling operations were carried out by ballasting the barge.



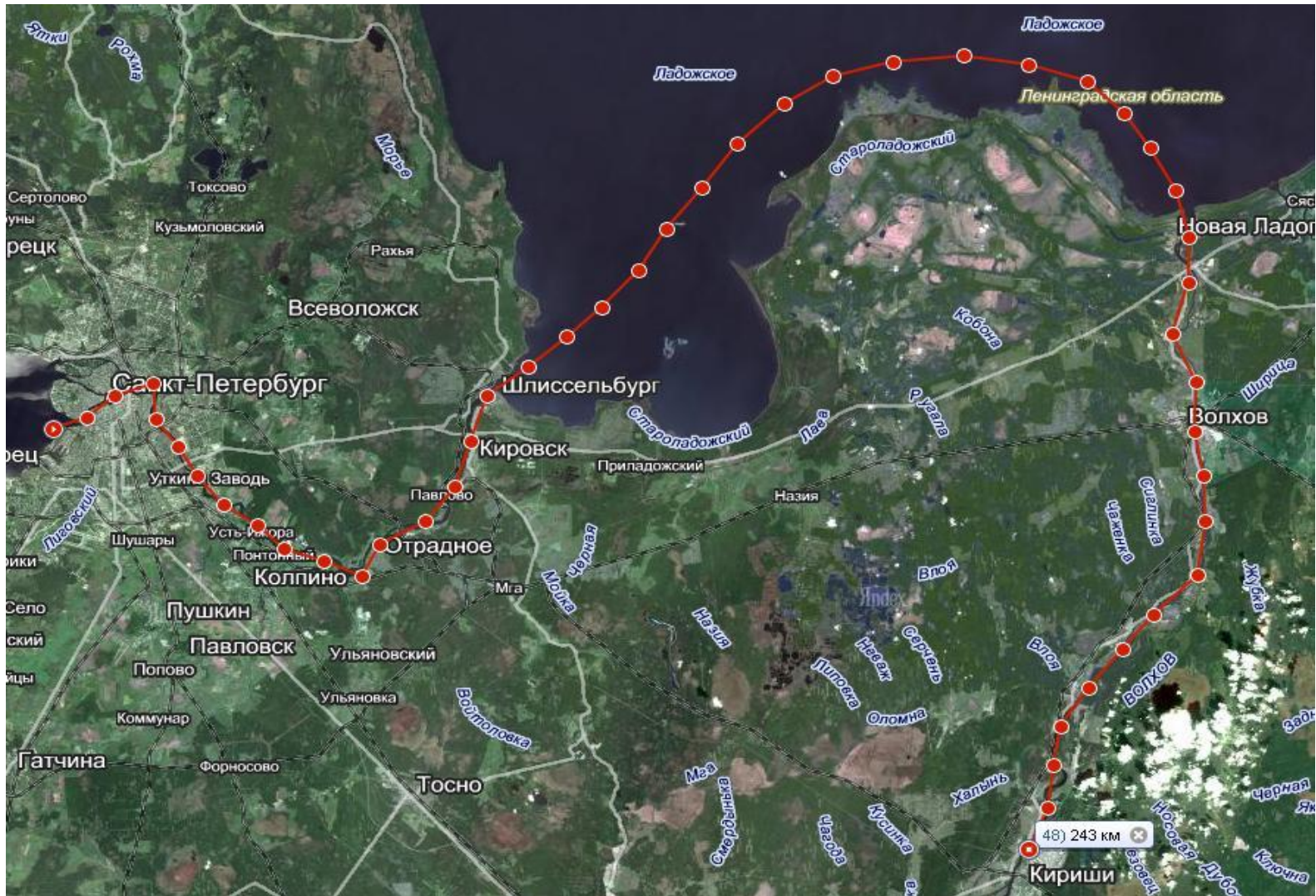
The cargo has been discharged and delivered to the job site by means of SPMTs.



During the period of river navigation
2005 we arranged 12 voyages.



The route of transportation from the Port of St. Petersburg to Kirishi was as follows:



Volume shipped - more than 25 000
freight tons.



The year of 2010

The Customer: Izhorskiye Zavody by order of OMZ (Uralmash – Izhora Group)



Simultaneous transportation of 2 hydrocracking reactors (**total** weight 2 500 MT - 1250 MT each, 37,5 m. x 7,7 m. x 6,5 m.) for Oil Refining and Petrochemical Complex TANECO in Nizhnekamsk.



Preparation took about 900 days. New berth on Neva River was built as well as the road leading to it, it had been approved by Russian Railways JSC to close the railway crossing, the barge had been strengthened.



The specialized dock type berth was built in Nizhnekamsk. The discharging of heavyweight cargo by means of flooding dock was the first experience in present-day Russia.



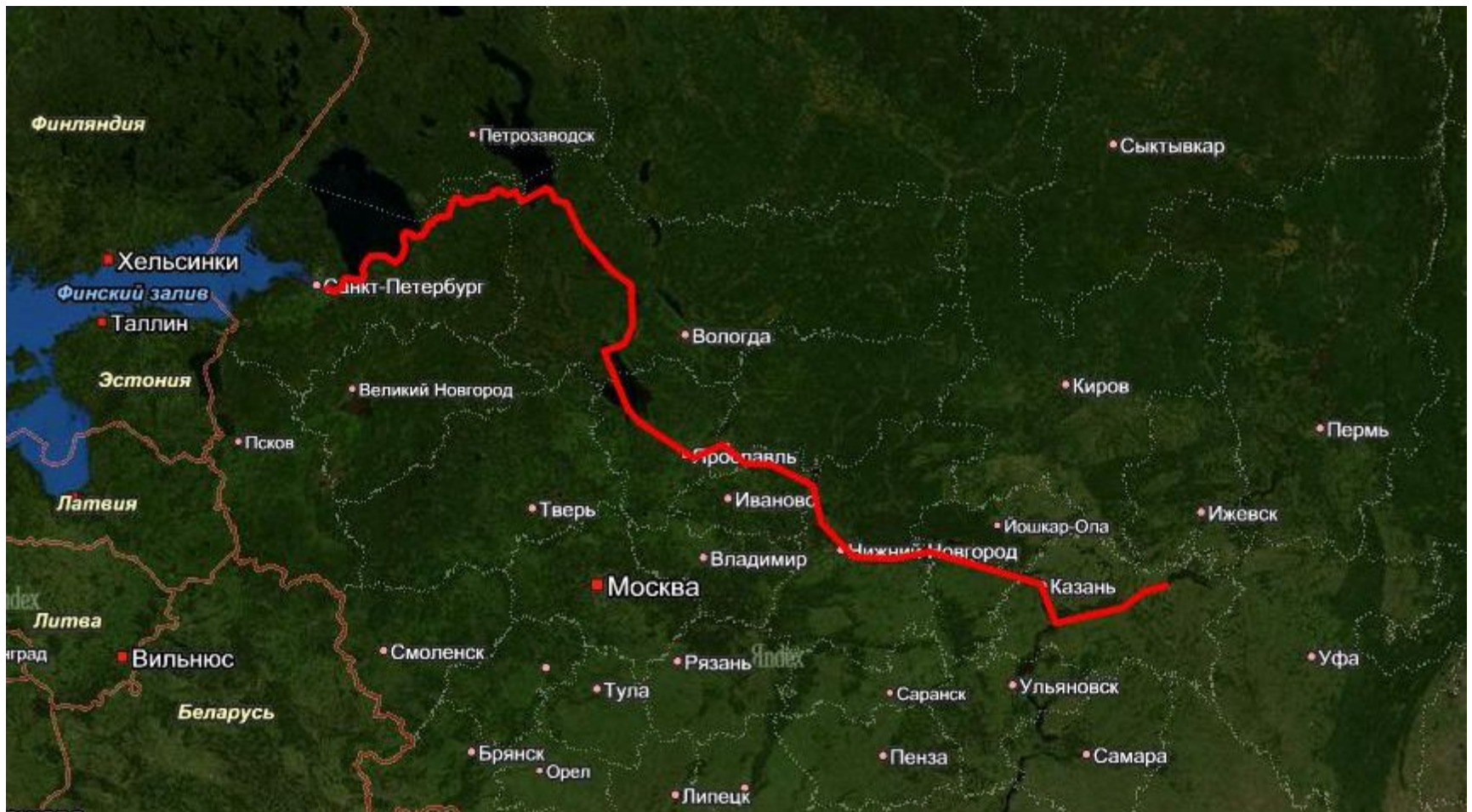
Loading operations in Saint Petersburg as well as discharging in Nizhnekamsk were held by Ro-Ro method



Discharging in Nizhnekamsk



The route from berth on Neva River to Nizhnekamsk was as follows. The distance of about 1800 kilometers had been got by 10 days.



The project was fulfilled and the cargo was delivered to the Consignee.



Years of 2010-2012

The Customer: OJSC TANECO (Nizhnekamsk)



Since 2010 INCOTEC CARGO Ltd was involved in door-to-door delivery of complete petrochemical equipment (weight up to 240 MT, length up to 45 m., width up to 9 m., height up to 7,5 m.) from Europe, North America, Asia. These shipments were within the context of Oil Refining and Petrochemical Complex construction OJSC TANECO.

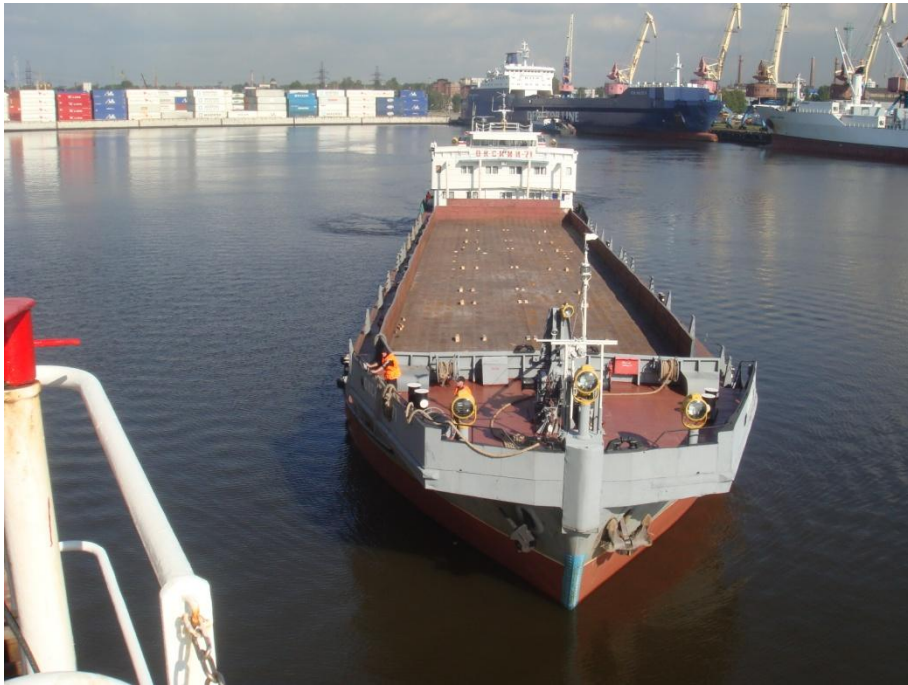
CCR Plant delivery from South Korea
(direct sailing from Onsan to St. Petersburg)
consisted of 6 Modules,
total volume of shipment was 9 000 freight tons.



For that cargo geared vessel was chartered. She has 2 cranes by 275 MT SWL each.



In the Port of St. Petersburg Modules were discharged directly on board of 3 river-going vessels which delivered them to Nizhnekamsk.



Upon discharging in Nizhnekamsk,
Modules were delivered to the job site.



Delivery of Reactor Column (45 m. length) from Italy



The total volume of shipped equipment is more than 50 000 freight tons. Deliveries were arranged by sea, railway, river, air and trucks.



Year of 2012 (November – December) The Customer: Baltiysky Zavod JSC



Delivery of core melt trap with total weight of 770 MT for second power unit of Leningrad Nuclear Power Plant-2



The heaviest items (weight up to 161 MT) were delivered by floating crane and then this crane reloaded equipment on trucks.



That time was not the first one when INCOTEC CARGO arranged transportation of heavyweight and oversized cargo for second power unit construction of Leningrad Nuclear Power Plant-2. In autumn 2009 we delivered identical core melt trap which was also produced by Baltiysky Zavod JSC.



Among our Customers such Companies as:

Atomstroyexport JSC

Baltiysky Zavod JSC

Gazprom podzemremont Orenburg JSC

Izhorskiye Zavody

Kirishinefteorgsintez (KINEF)

Podolsk Machine Building Plant JSC

Power Machines OJSC

Rosenergoatom Concern OJSC

Salavatnefteorgsintez JSC

Surgutneftegas OJSC

TANECO OJSC

Technopromexport

Terminal-Alstom LLC

Uralhimmash JSC

More detailed information
about us and our experience
you can find on our website

WWW.INCOTEC-CARGO.RU