

**ANALYSIS OF AVALANCHE
DANGER ON THE
TSULZHANSKAIA TRACK
MAINTENANCE DEPARTMENT OF
THE KRASNOYARSK RAILWAY.
MEASURES OF FIGHT AGAINST
AVALANCHES.**

**Kazygashev Artem
group S-211**

Siberian Transport University



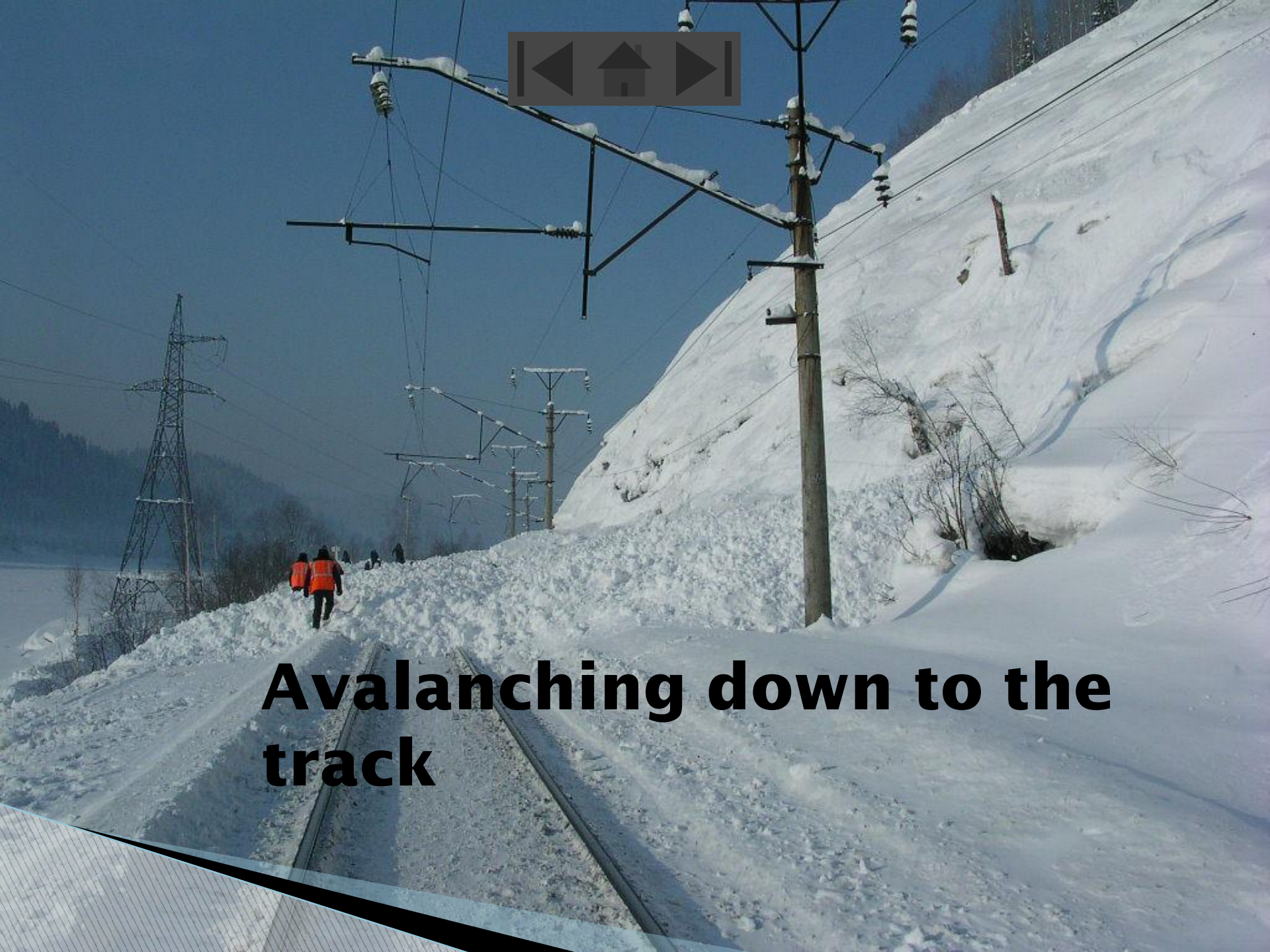
Every year the considerable part of money for snow control on mountain sites of railways spends on elimination of consequences of avalanching





Difficult environments within 200 km of the Tsulzhanskaia track maintenance department along the Tom' river

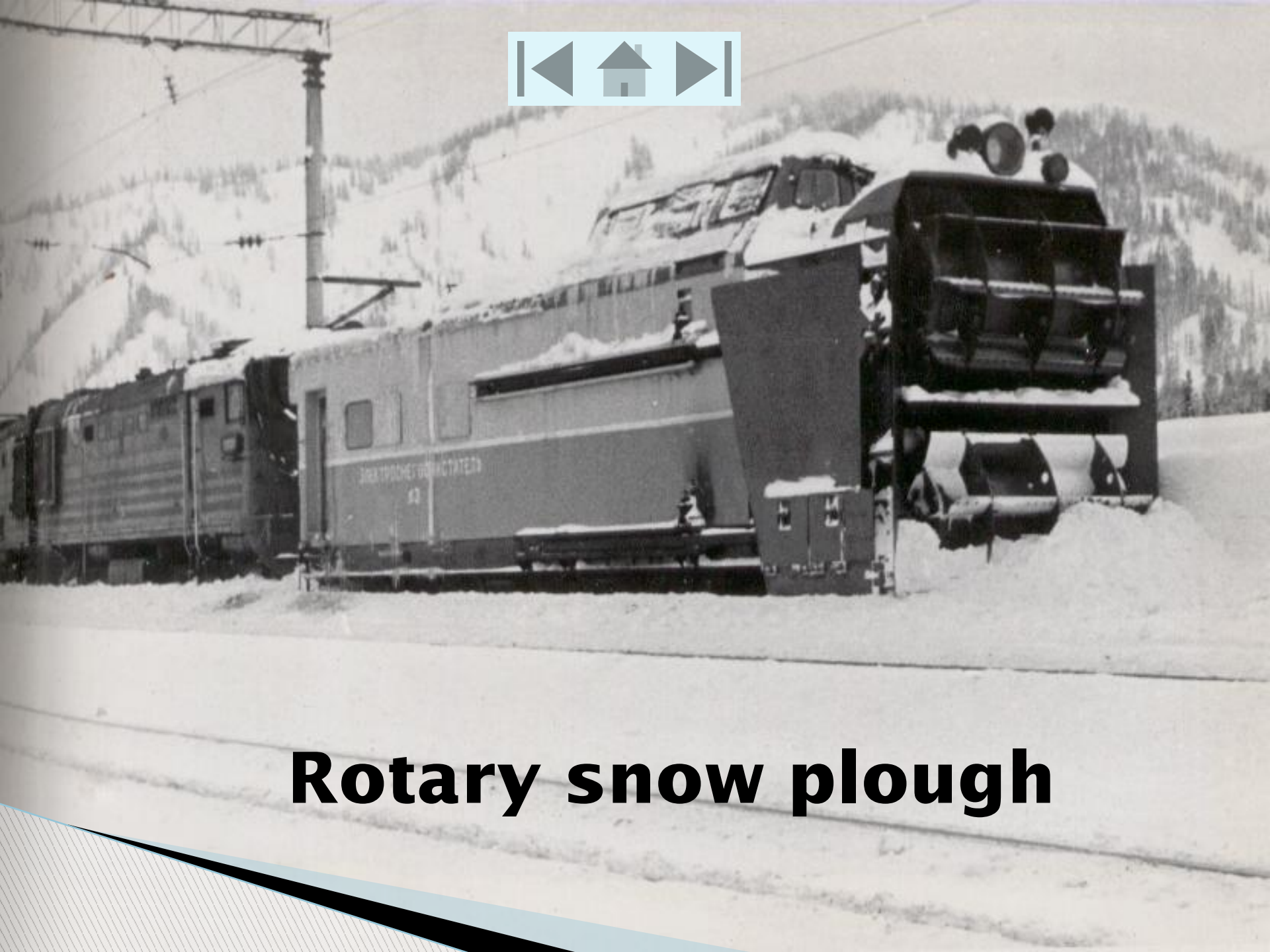
- 4,700 m of avalanche dangerous places
- 1,600 of mudflow dangerous places
- 6,100 m of toppling dangerous places
- 20,580 m of terrace erosion and an embankment base undermining



Avalanching down to the track



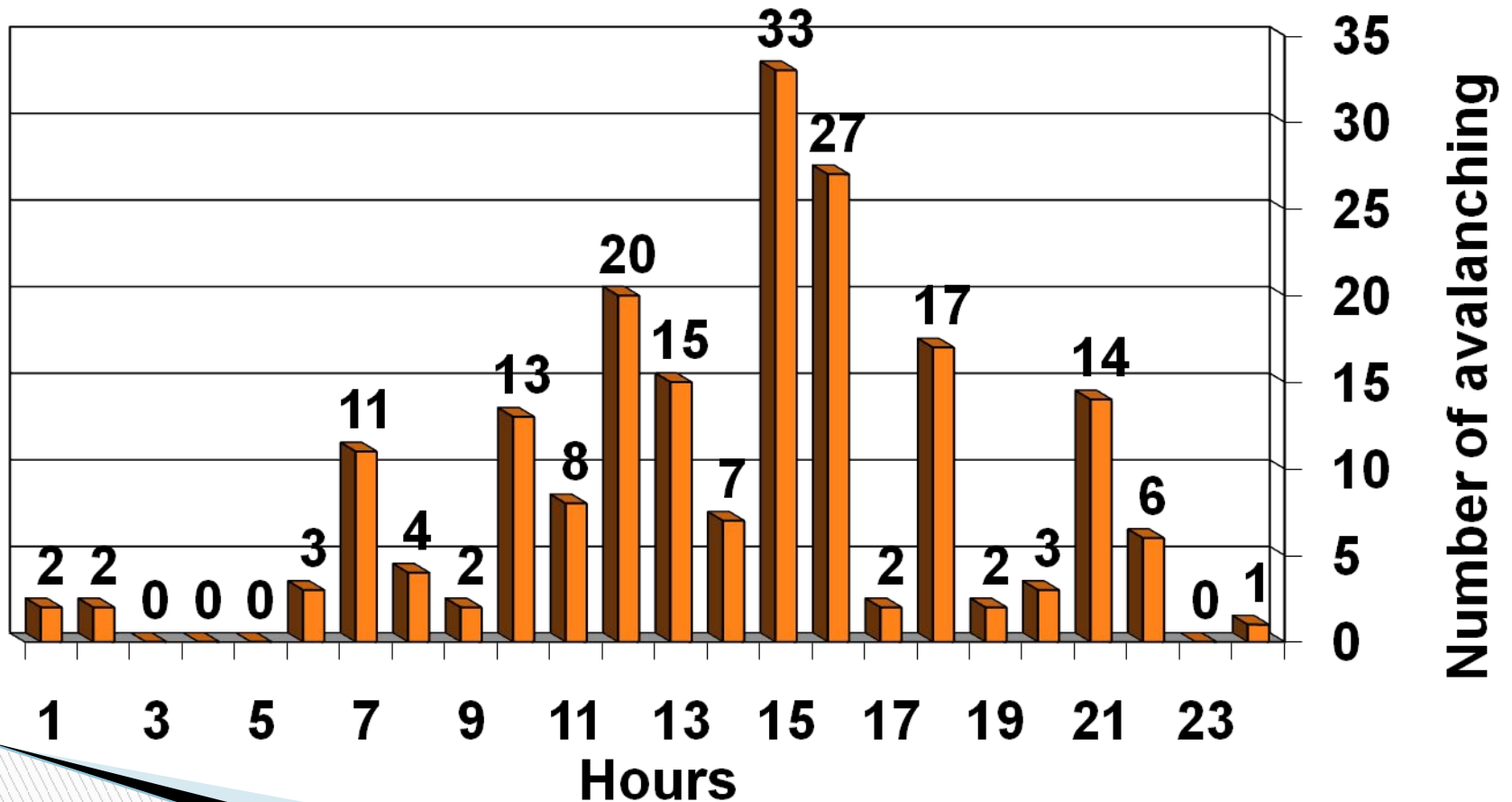
Blockages liquidation



Rotary snow plough

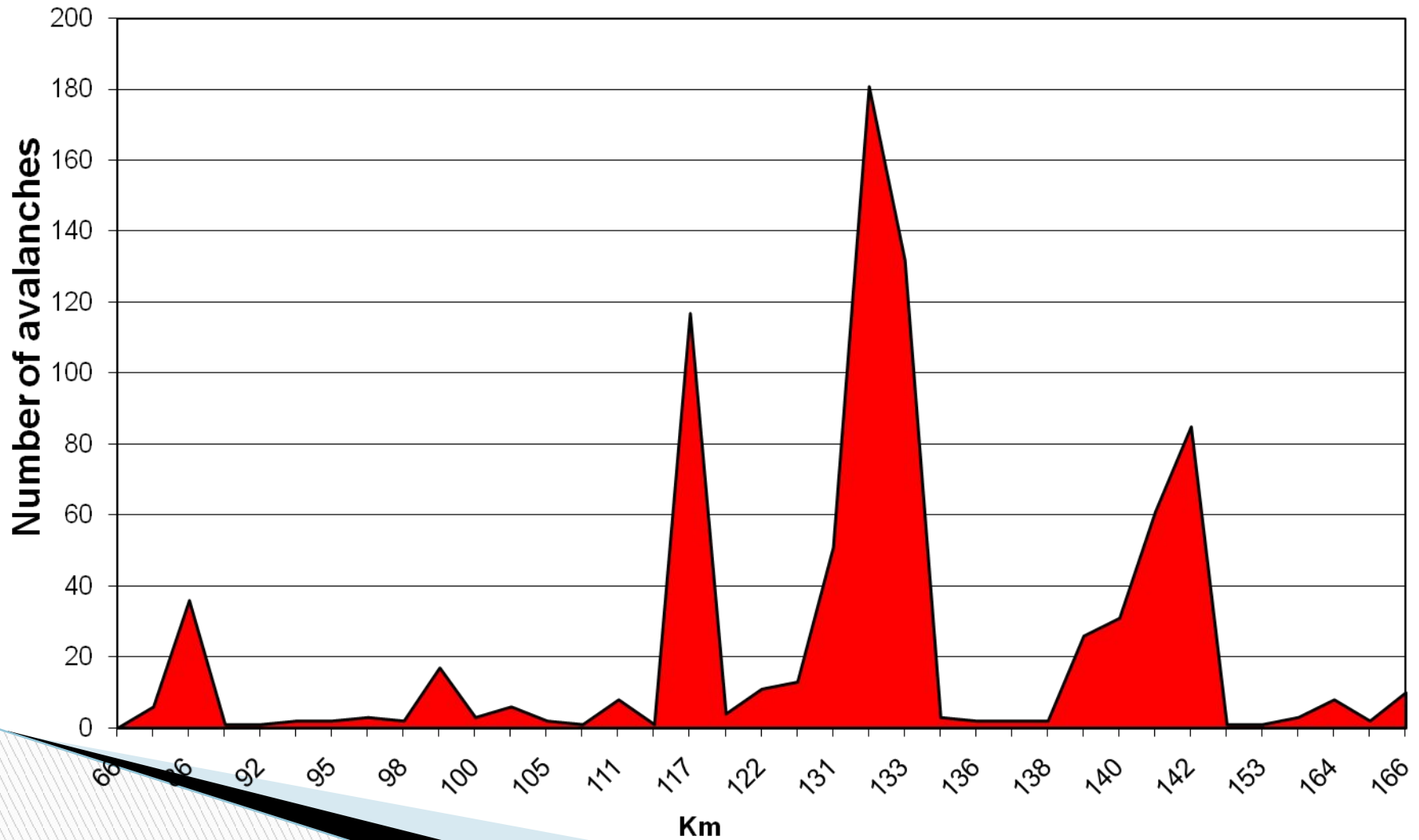


Number of avalanching for twenty-four hours





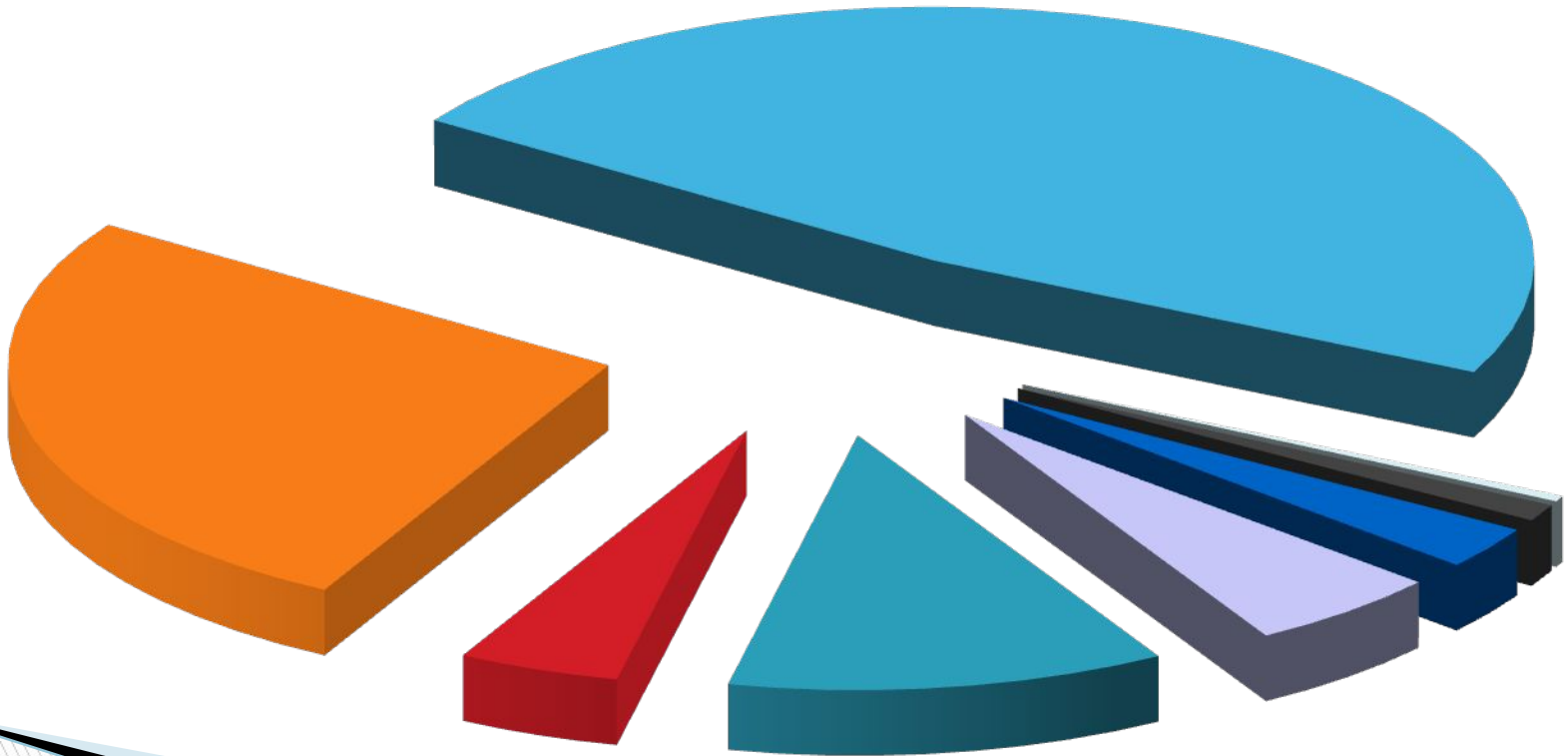
Areas of avalanching





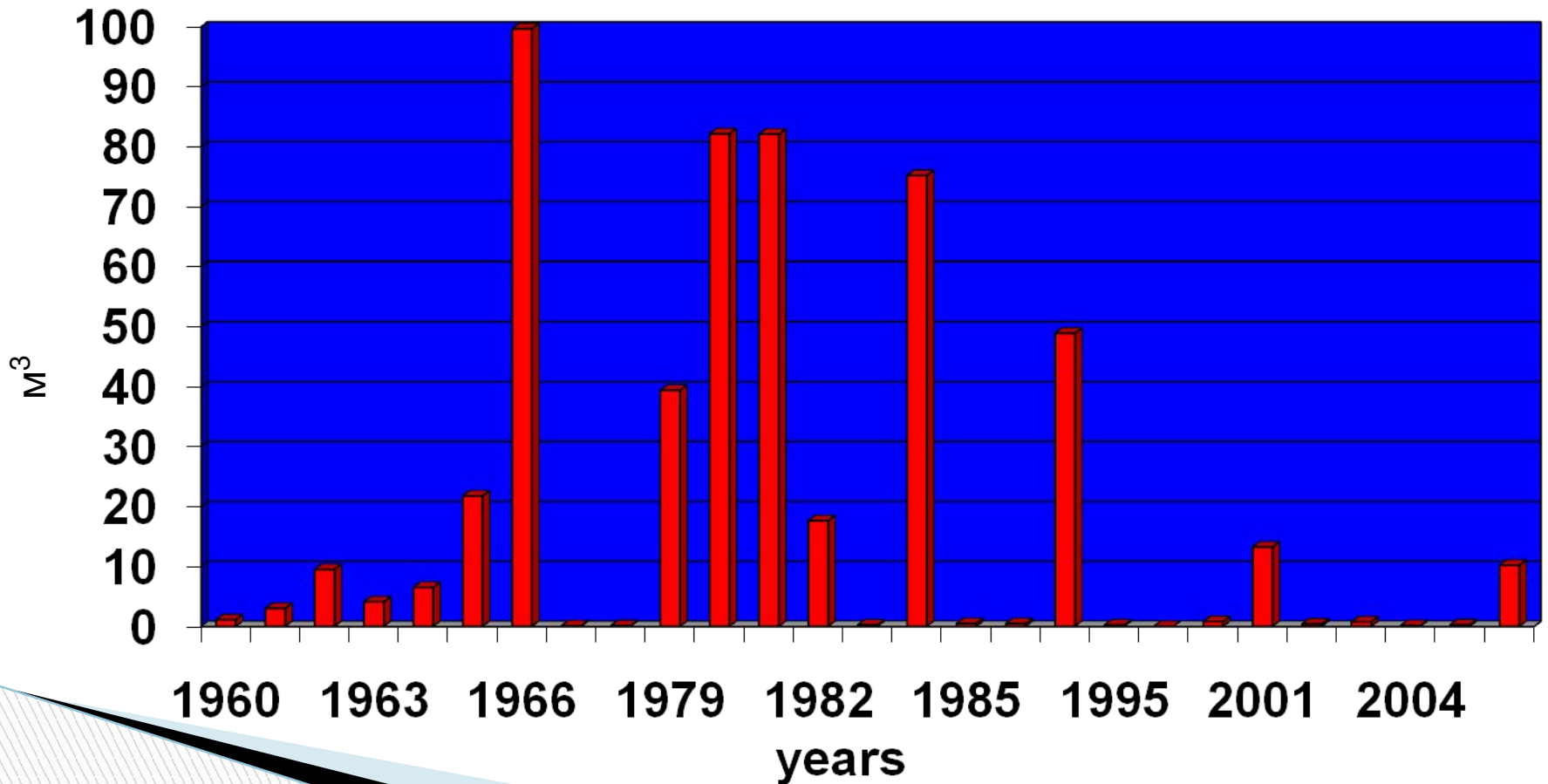
Number of avalanching, months %

■ Jan ■ Feb ■ March ■ April ■ Others ■ October ■ Nov ■ Dec





Volume of avalanching, thousand m^3



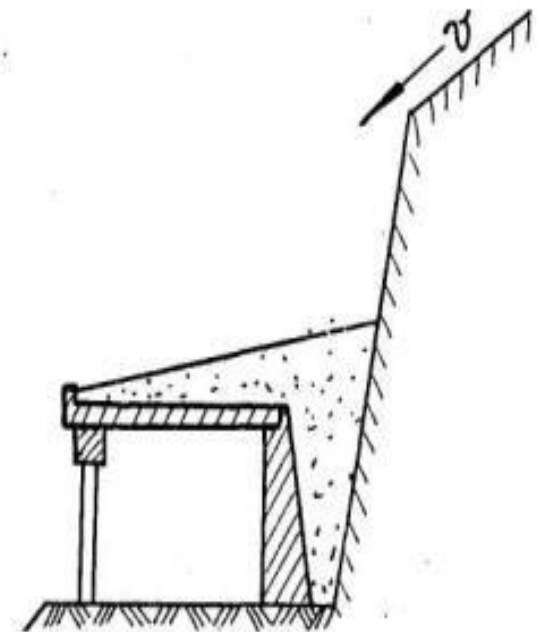
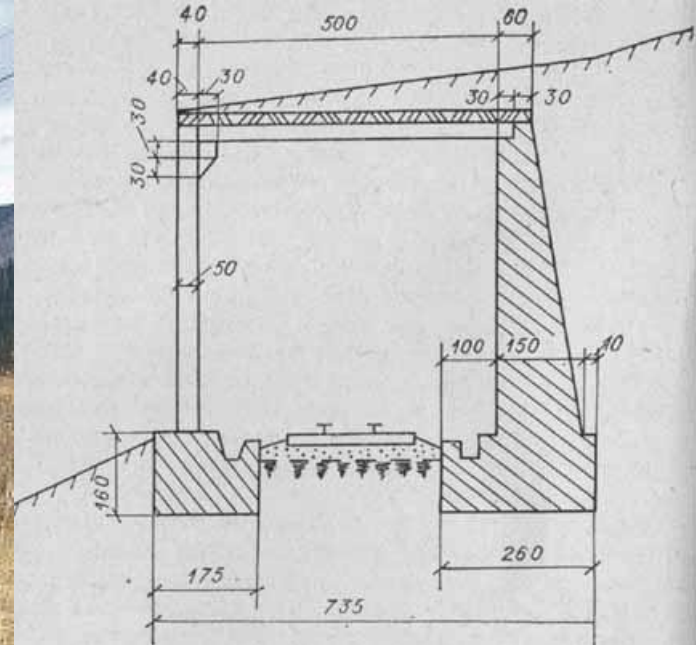
Shelling from artillery





Snow- restraint cage constructions





Avalanche
gallery

THANK YOU FOR YOUR ATTENTION!

