

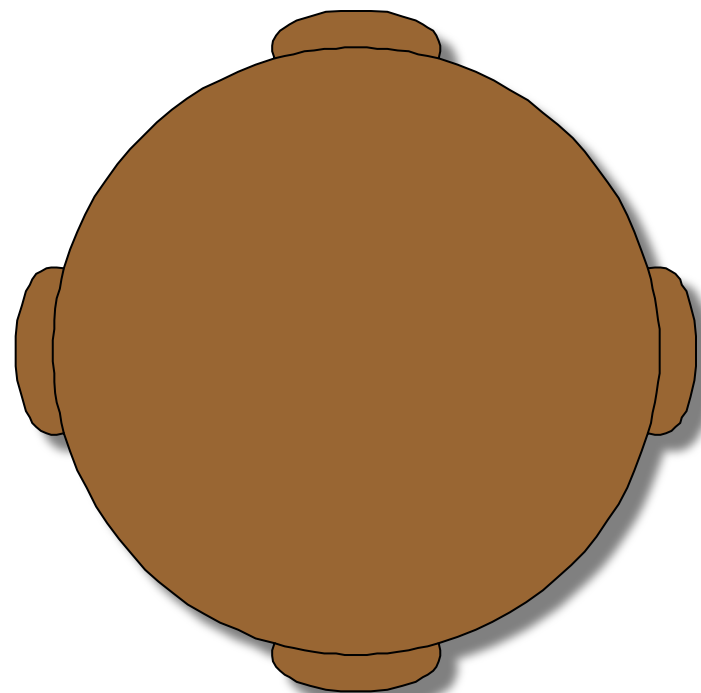
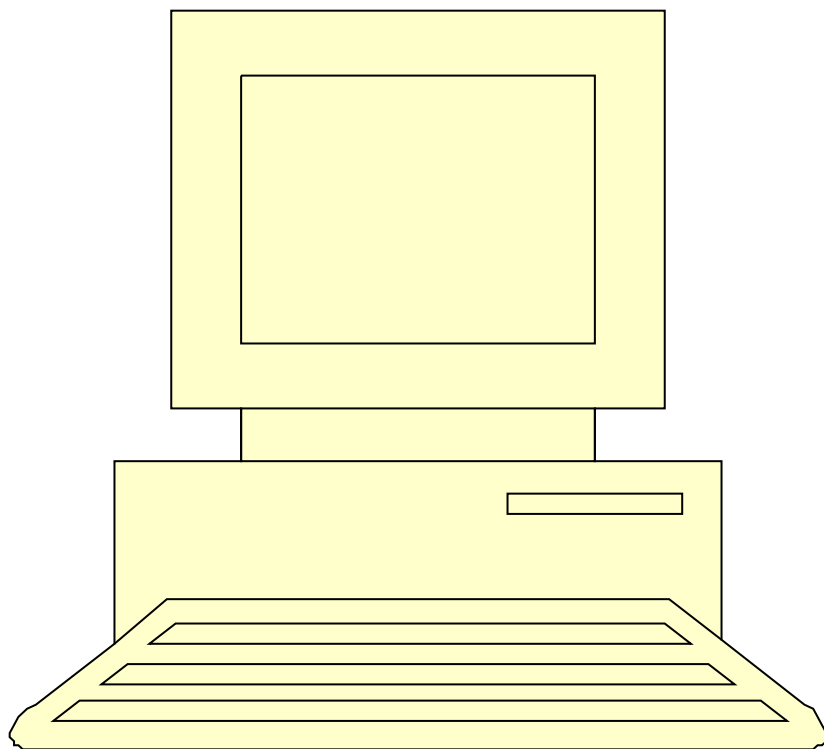
# Векторные графические редакторы

# Основные инструменты векторных редакторов

- Набор геометрических примитивов
- Текст
- Карандаш
- Заливка
- Кривые Бизье



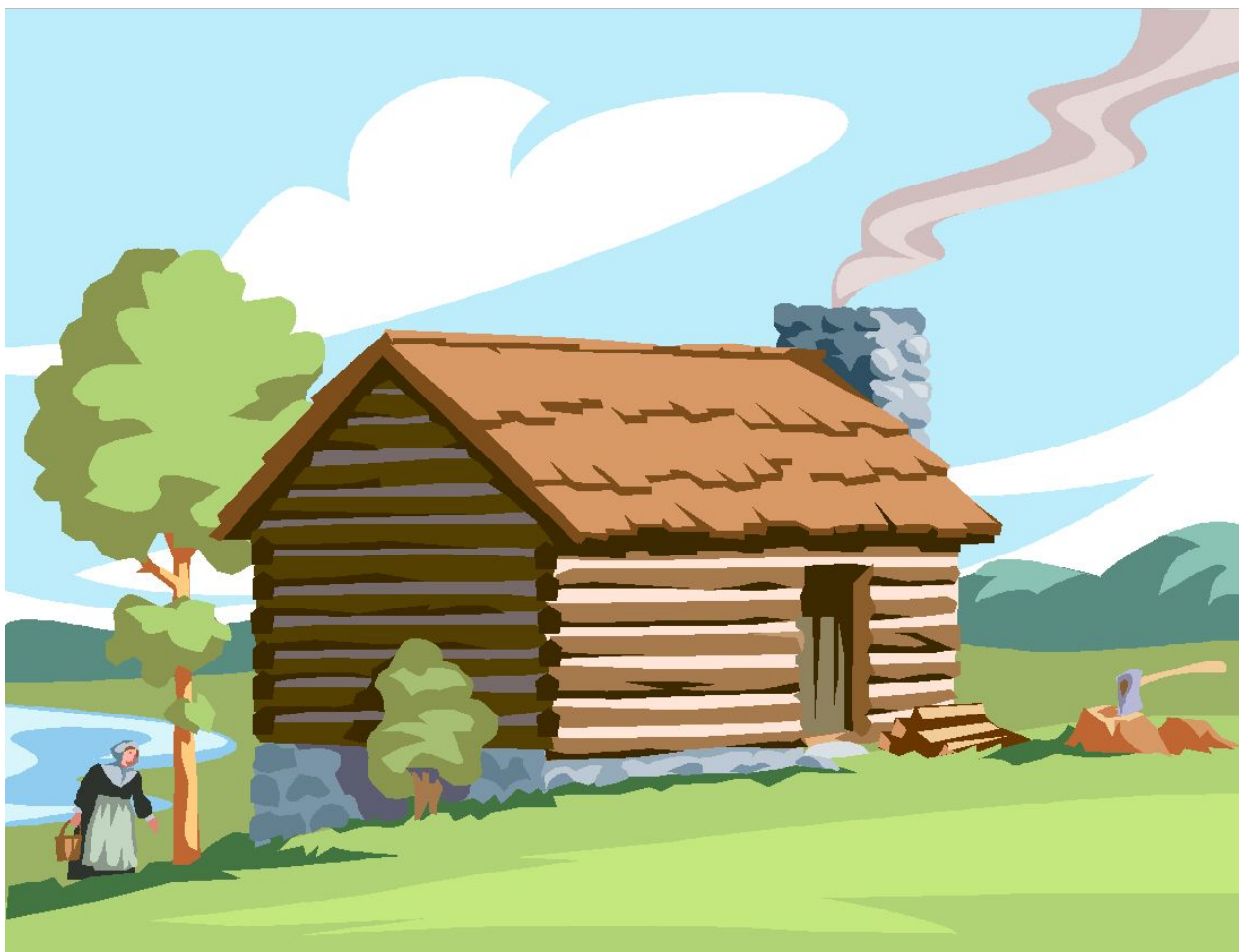
# Примеры векторных рисунков



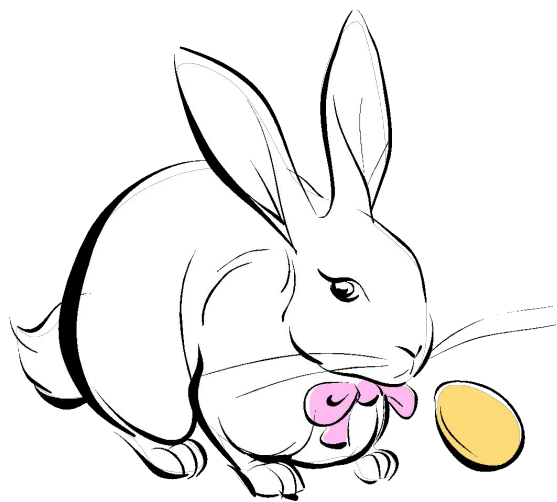
# Примеры векторных рисунков



# Примеры векторных рисунков



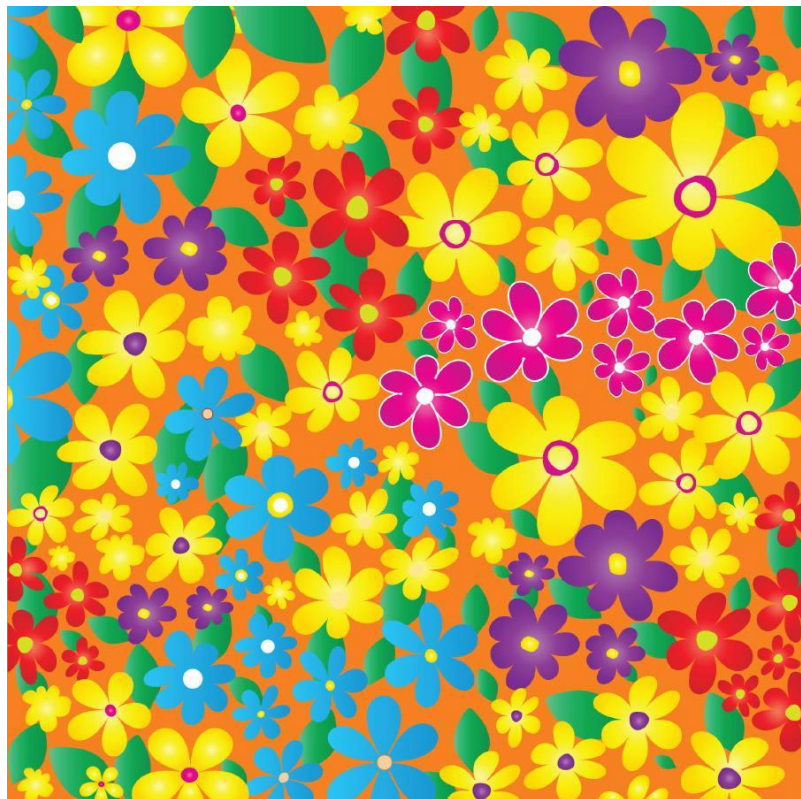
# Примеры векторных рисунков



# Примеры векторных рисунков



# Примеры векторных рисунков

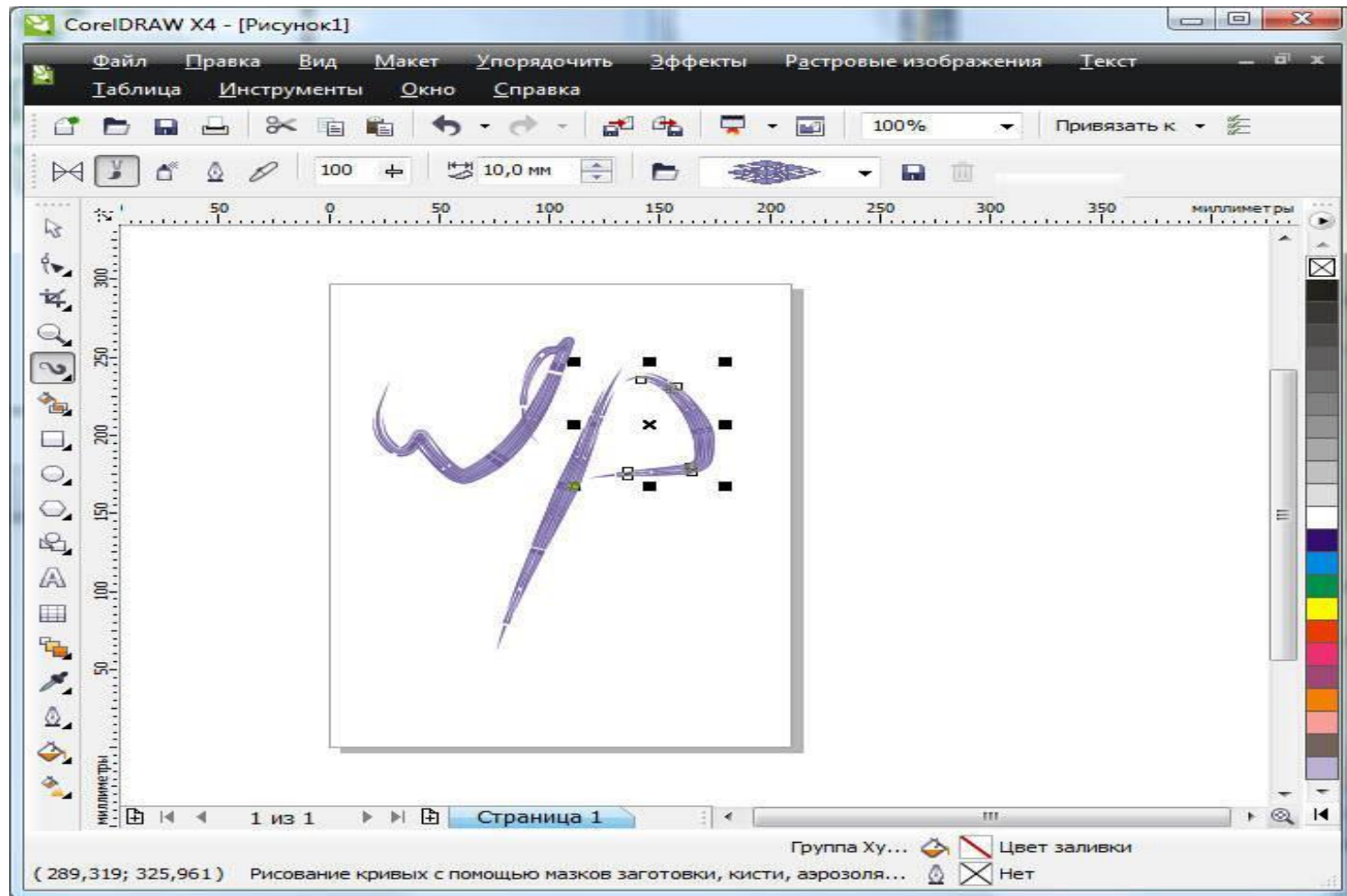




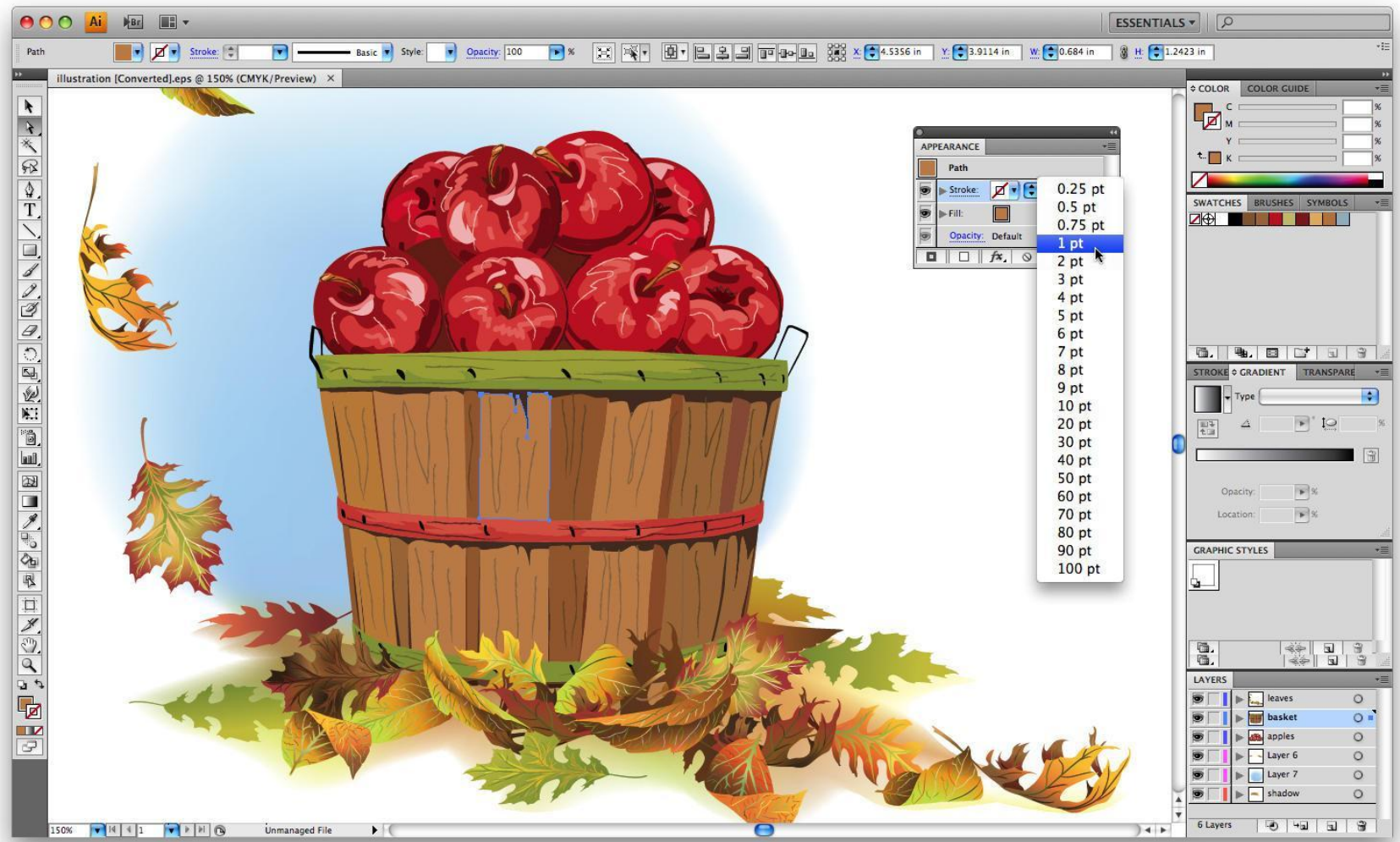
# Примеры векторных рисунков



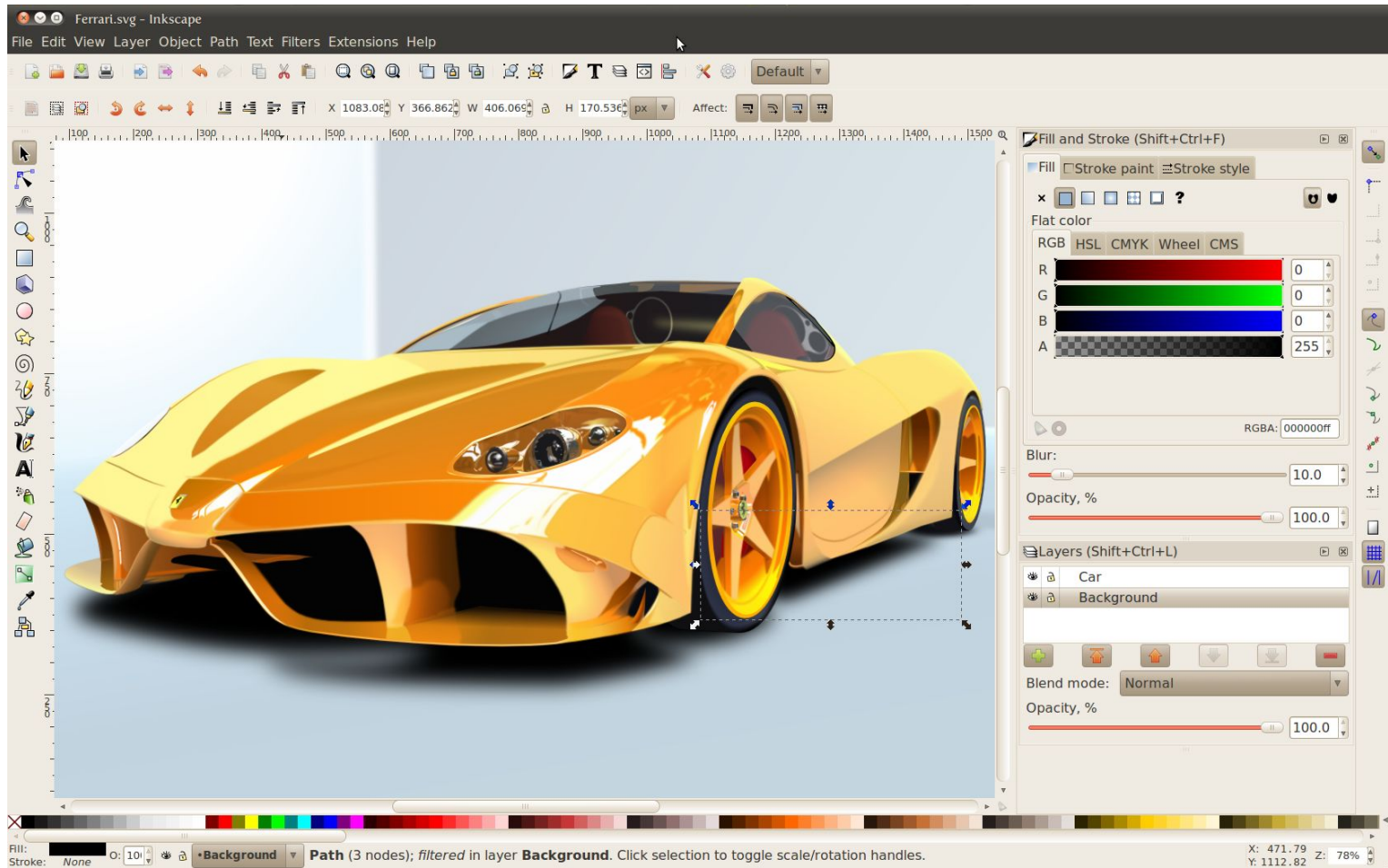
# CorelDRAW



# Adobe Illustrator



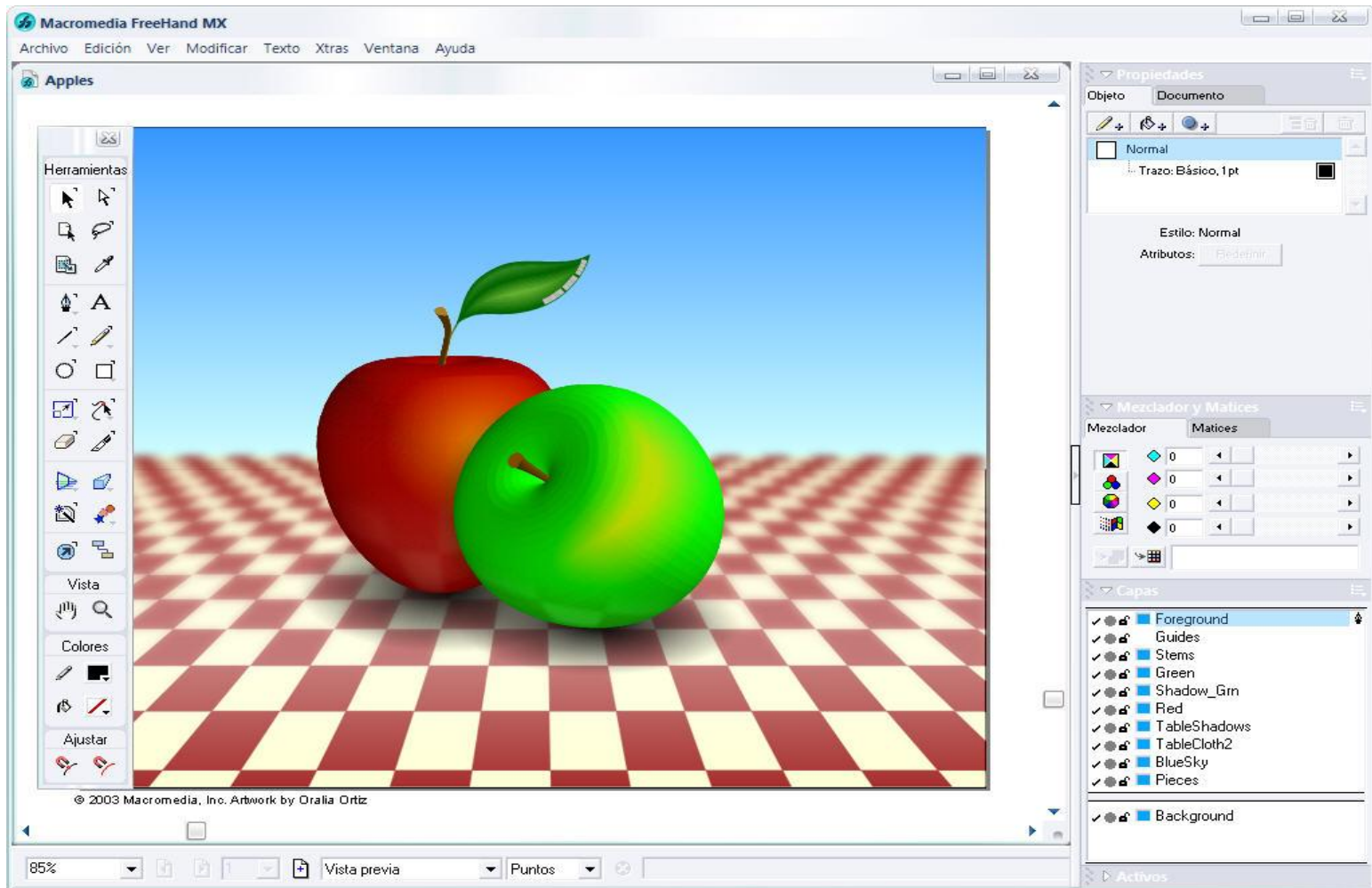
# Inkscape



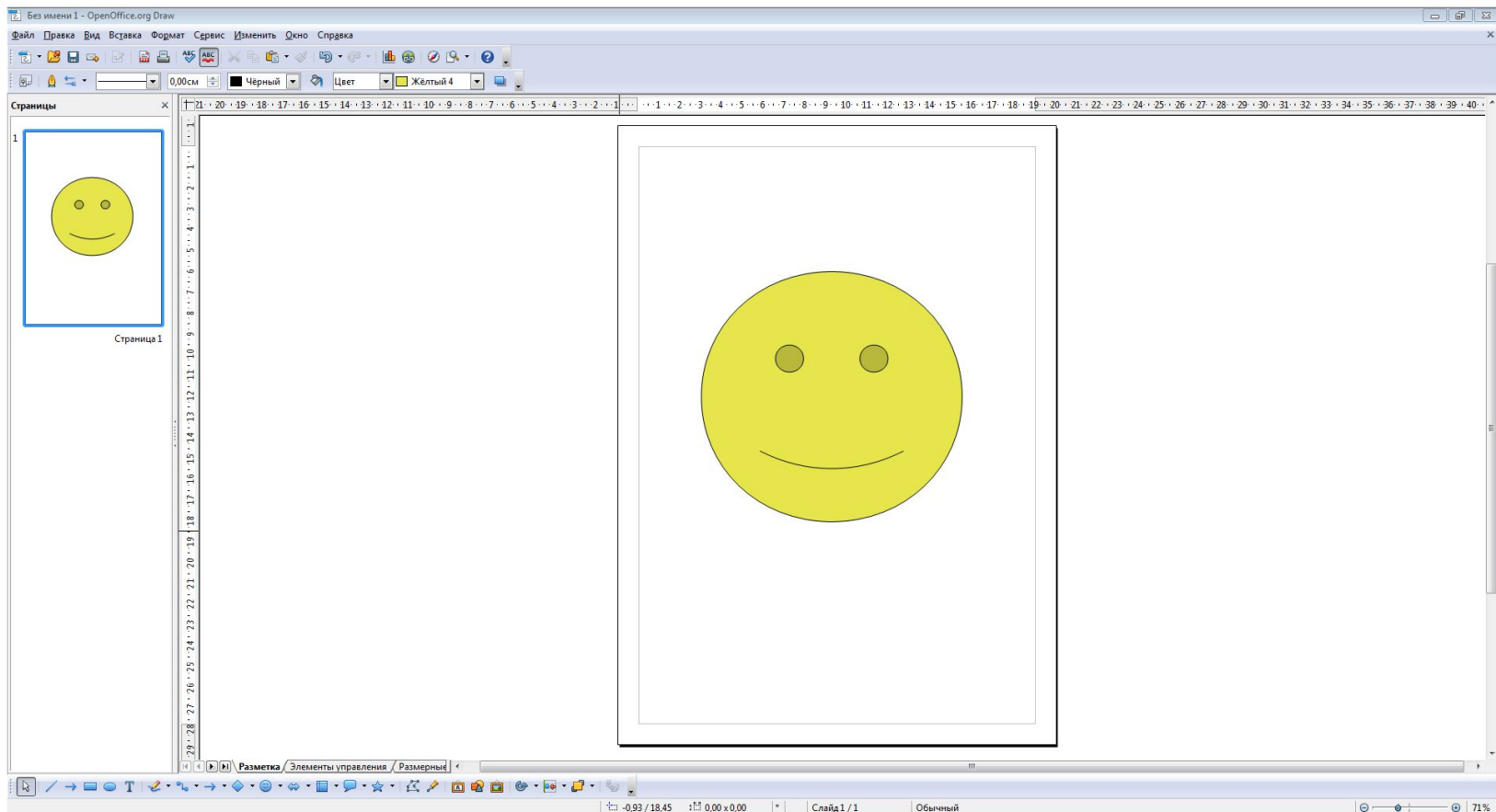
# Xara Designer



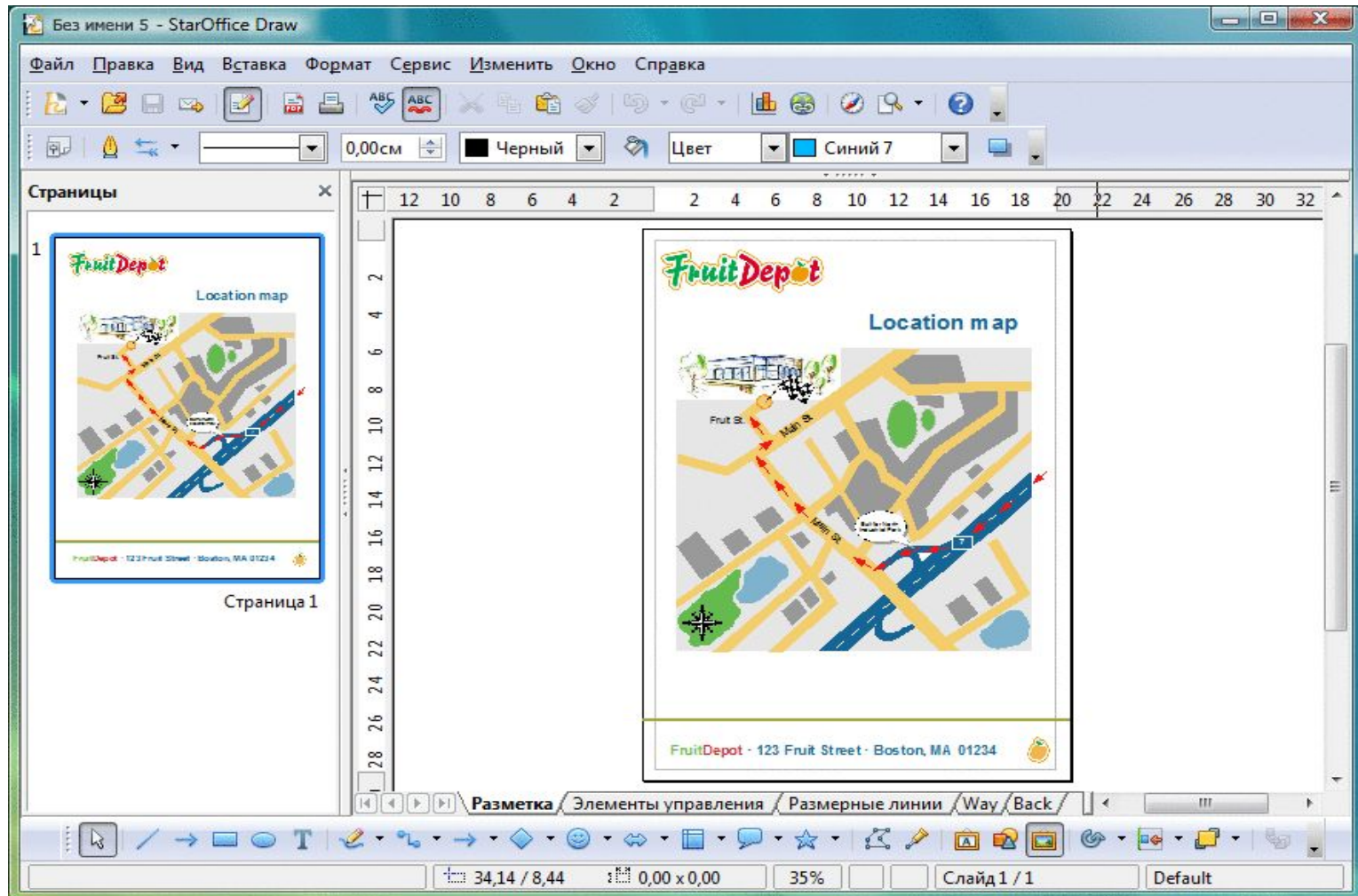
# Adobe Macromedia FreeHand



# OpenOffice.org Draw



# StarOffice Draw

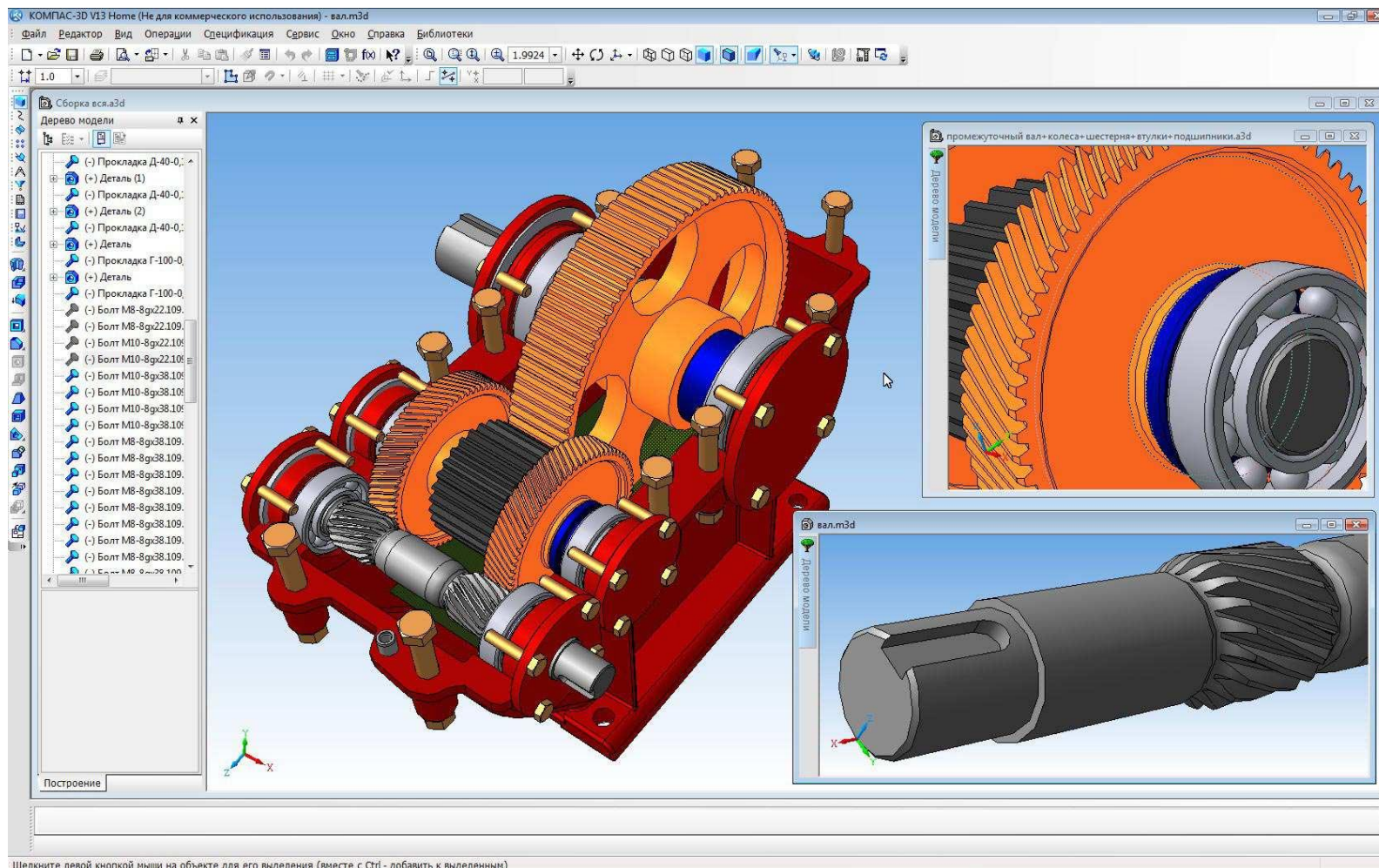




# Microsoft Visio

The screenshot displays the Microsoft Visio application window titled "FabrikamPackaging.vsd - Microsoft Visio". The interface includes a menu bar (File, Edit, View, Insert, Format, Tools, Data, Shape, Window, Help), a toolbar with various drawing tools, and a ribbon with tabs for "Home", "Layout", "Style", and "Tools". The main workspace shows a flowchart titled "Packaging and Storage Process" divided into three sections: Manufacturing, Packaging, and Shipping. The flowchart starts with a red "Start" oval, followed by a blue process box "Insert units in boxes", then another blue process box "Stack specified number of boxes in crate". A green diamond decision box "Paperwork verified?" follows. If "Yes", the flow goes to a blue process box "Seal crate and attach appropriate paperwork", then to a blue process box "File paperwork according to the procedure", and finally to a blue process box "Store for shipment" before reaching a red "End" oval. If "No", the flow goes to a blue process box "Communicate", then to a blue process box "Ensure corrective action", which then loops back to the "Seal crate and attach appropriate paperwork" box. The left sidebar shows a "Shapes" task pane with a search box and a list of shapes categorized by "Basic Flowchart Shapes (US units)" and "Department (US units)". The right sidebar shows a "Theme - Colors" task pane with options for "Theme Colors", "Theme Effects", and "Apply theme colors" with a "Built-In" section containing various color and style options. The status bar at the bottom indicates "Overall process" and "Page 1/5".

# КОМПАС



Щелкните левой кнопкой мыши на объекте для его выделения (вместе с Ctrl - добавить к выделенным)

# Вставка растрового изображения



Photoramki-Online.ru