

Правила поведения

В

КОМПЬЮТЕРНОМ

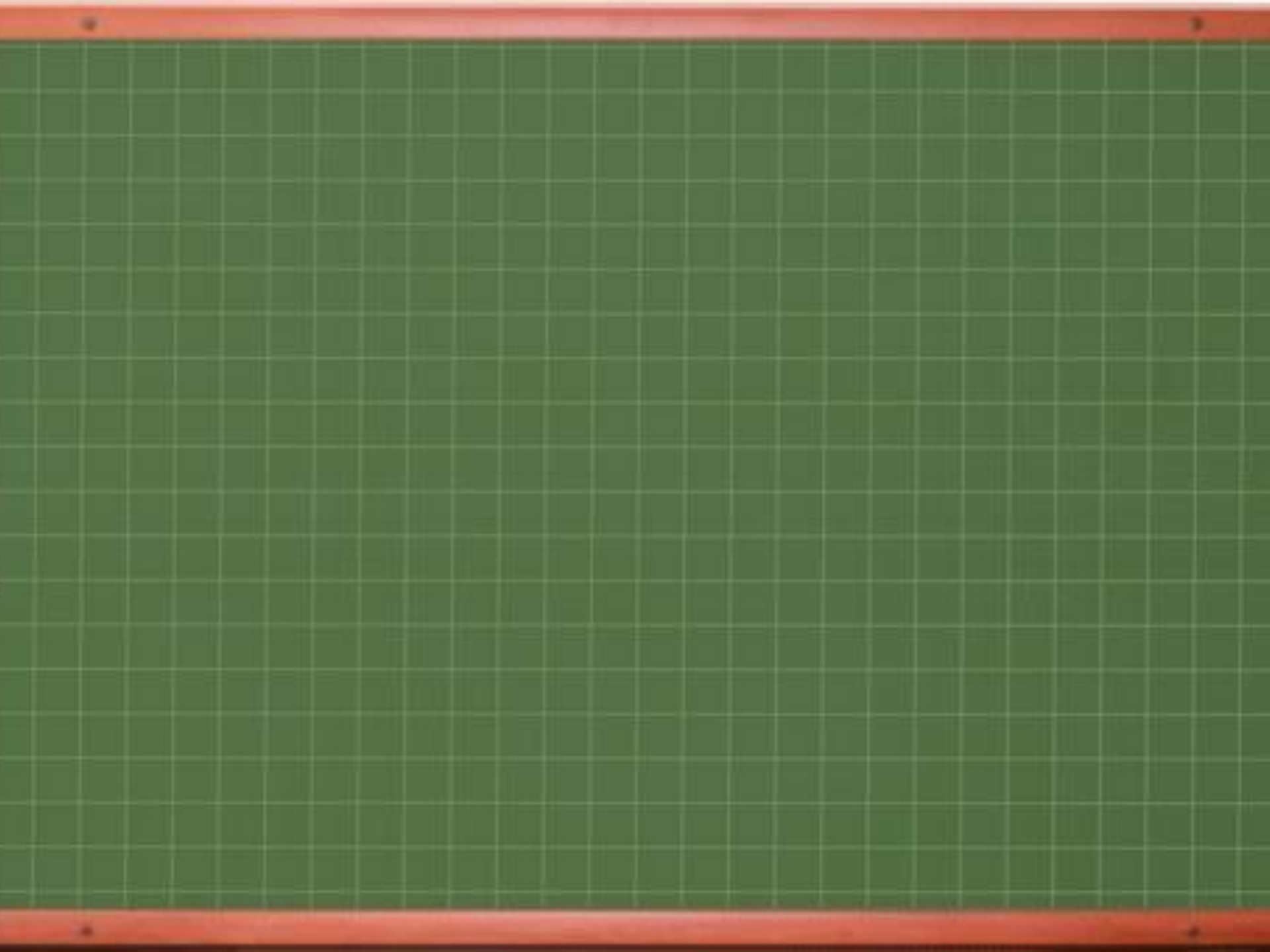


се

Разминк

а





DOSBox 0.72, Cpu Cycles: max, Frameskip 0, Program: BP

Файл Правка Поиск Пуск Компиляция Отладка Инс

[.] SOFTPRT.PAS

```
program Calc;
```

```
uses
```

```
const
```

```
var B
```

```
begin
```

```
Clr
```

```
Wri
```

```
Rea
```

```
if
```

```
beg
```

```
A
```

```
W
```

```
end
```

```
Rea
```

```
end.
```

midi assembler

file options help

```
for {set i 0} {$i < 127} {incr i} {  
    tempo [+ $i 40]  
    program_change 0 $i  
    note_on 0 $i 100  
    wait 96  
    note_off 0 $i  
}
```

render

render as

7:5

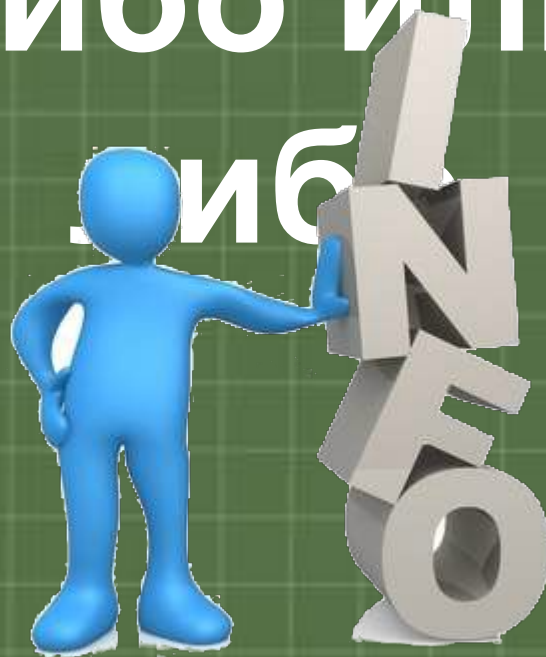
F1 Помощь | Задать установки оболочки



**Программа –
это система команд,
созданная
на языке
программирования**

Физминутка

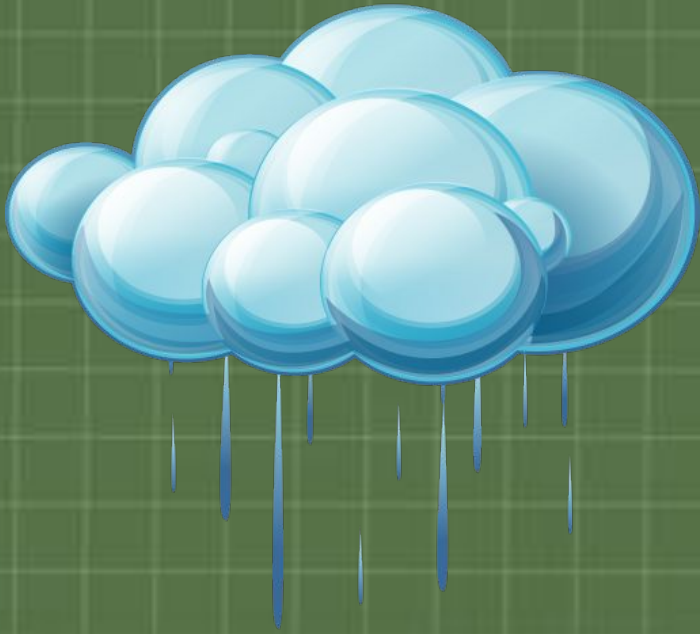
**Информация – это
сведения
о ком-либо или о чем-
либо**

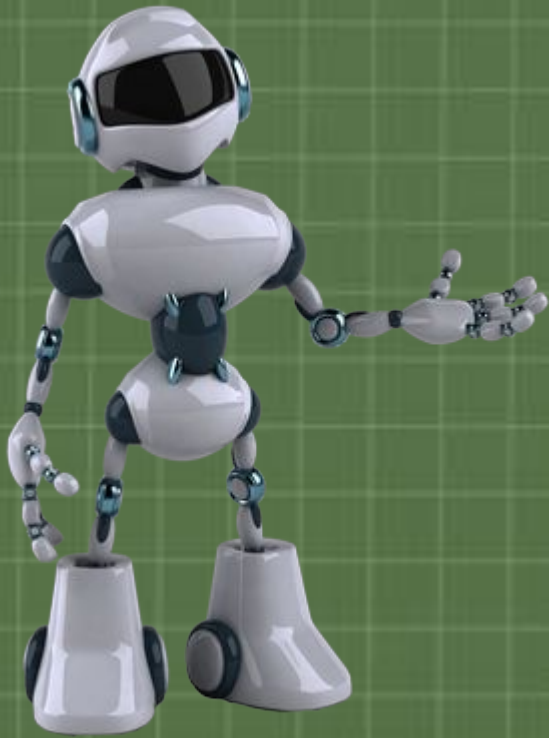




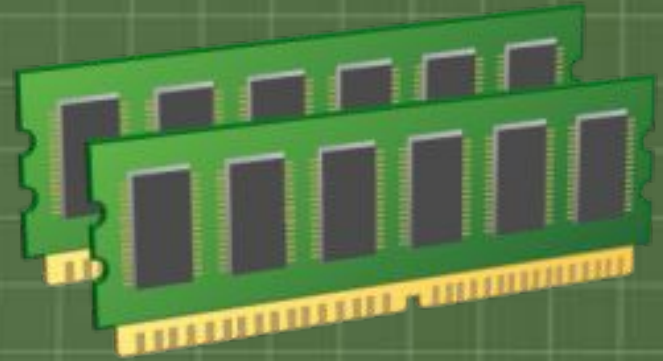














C:\tweakpng-1.4.1\sample.png - TweakPNG

File Edit Insert Options Tools Help

Chunk	L...	CRC	Attributes	Contents
IHDR	13	19355d41	critical	PNG image header: 300×150, 2 bits/pixel, paletted, noninterlaced
chRM	32	9cba513c	ancillary, unsafe to copy	chromaticities: WP(0.31270,0.32900),R(0.64000,0.33000),G(0.30...
gAMA	4	0bfc6105	ancillary, unsafe to copy	file gamma = 0.45455
PLTE	12	69f74f86	critical	palette, 4 entries
tRNS	4	fe0cbb0b	ancillary, unsafe to copy	alpha values for palette colors, 4 entries
bKGD	1	110c4cf2	ancillary, unsafe to copy	background color = palette entry 3
pHYs	9	009a9c18	ancillary, safe to copy	pixel size = 2835×2835 pixels per meter (72.0×72.0 dpi)
tIME	7	ccb3d746	ancillary, unsafe to copy	time of last modification = 5 Jun 2010, 15:00:00 UTC
IDAT	512	ce1f4dd7	critical	PNG image data
IDAT	378	2690aab2	critical	PNG image data
tEXt	39	3388796c	ancillary, safe to copy	text, key="Comment": "Sample image file for TweakPNG."
iTXt	48	de259011	ancillary, safe to copy	text (international), key="Comment": "Sample internātionāl text ch...
IEND	0	ae426082	critical	end-of-image marker

PNG file size: 1223 bytes

Практическа я част

