

УСТАНОВКА SQL SERVER 2005

SQL Server 2005 (Disc 1 of 2)



Launch the Installation Wizard to install server components, management tools, development tools, Books Online, and samples. This selection will require both SQL Server 2005 installation discs.

Microsoft
SQL Server 2005
Standard Edition

Start

Prepare

- Review hardware and software requirements
- Read the release notes
- Install SQL Server Upgrade Advisor

Install

- Server components, tools, Books Online, and samples
- Run the SQL Native Client Installation Wizard

Other Information

- Browse this CD
- Visit the SQL Server website
- Read the SQL Server license agreement

Exit

Требования к аппаратному обеспечению

□ **Минимальные:**

Процессор: Intel (или совместимый) Pentium III 600 МГц или выше;
Память: 512 МБ или более (192 МБ для Express Edition);
Жесткий диск: 10 ГБ или более.

□ **Рекомендуемые:**

Процессор: Intel Pentium4 3000 МГц или выше;
Память: 1024 МБ или более;
Жесткий диск: 100 ГБ или более.

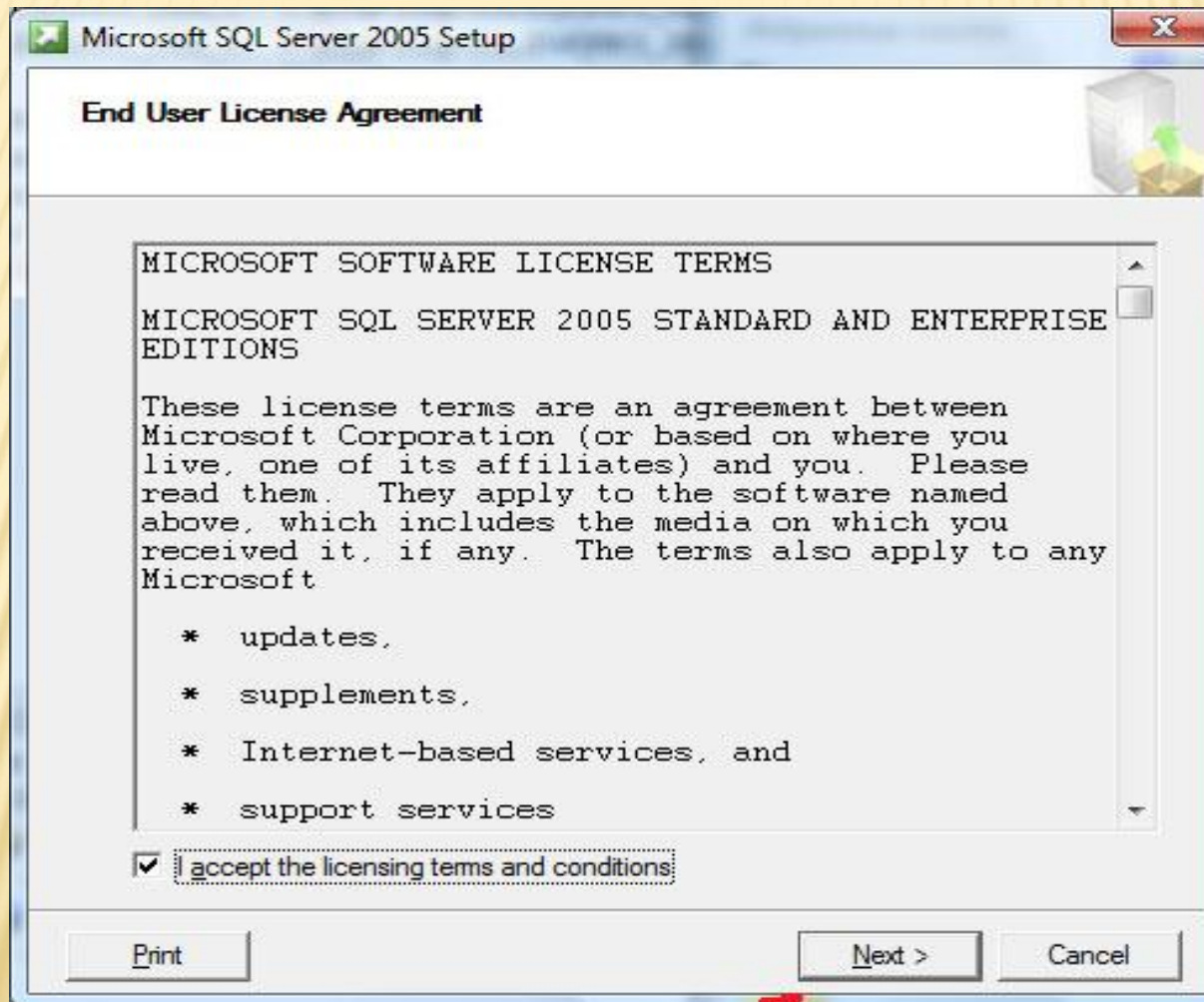
□ **Требования к программному обеспечению**

Необходимо наличие установленных пакетов:

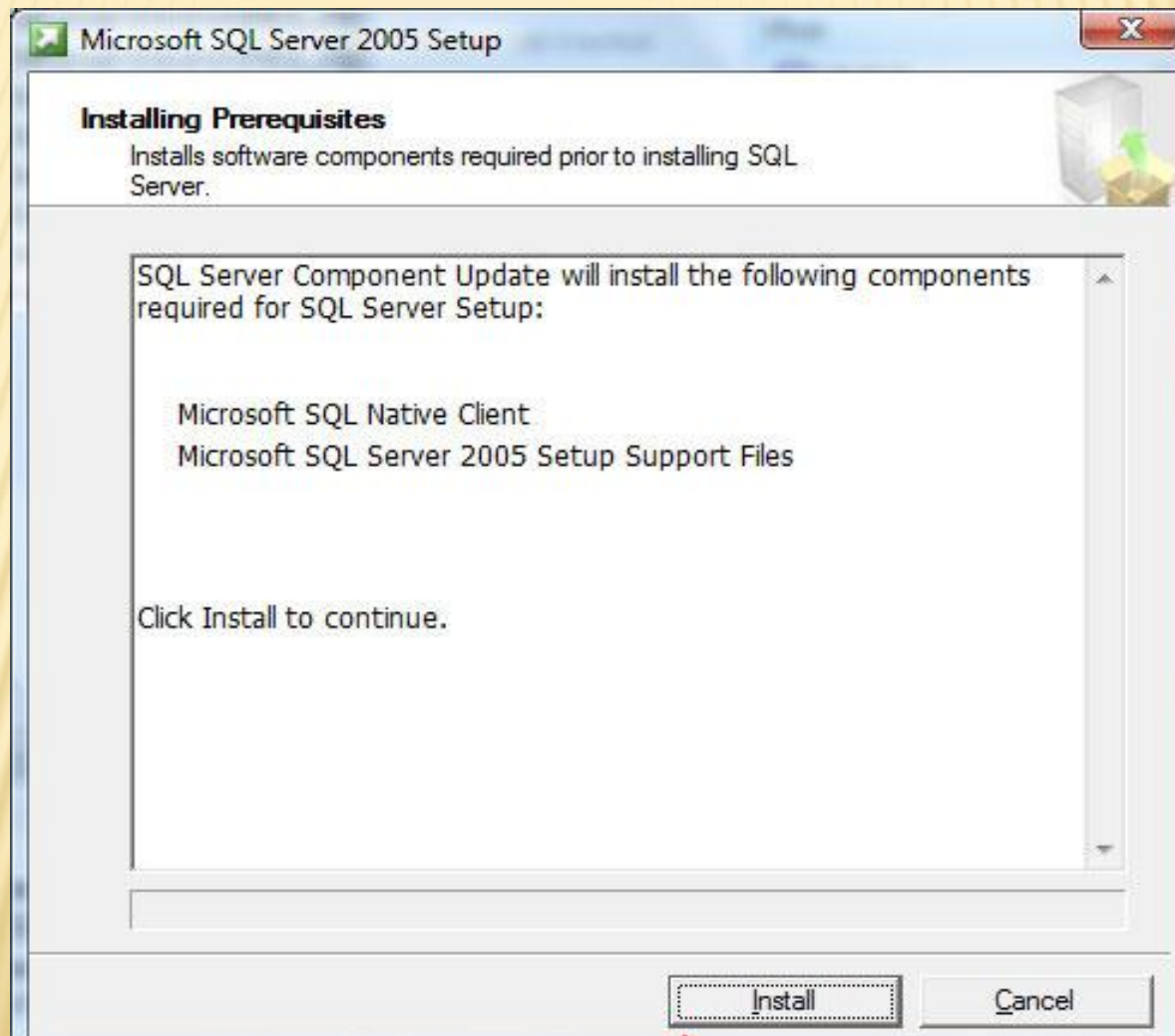
MDAC 2.8 (входит в XP), **Windows Installer 3.1** и **Microsoft .NET Framework 2.0**.

Операционная система: MS Windows 2000 SP4 Server, MS Windows 2003 Server SP1

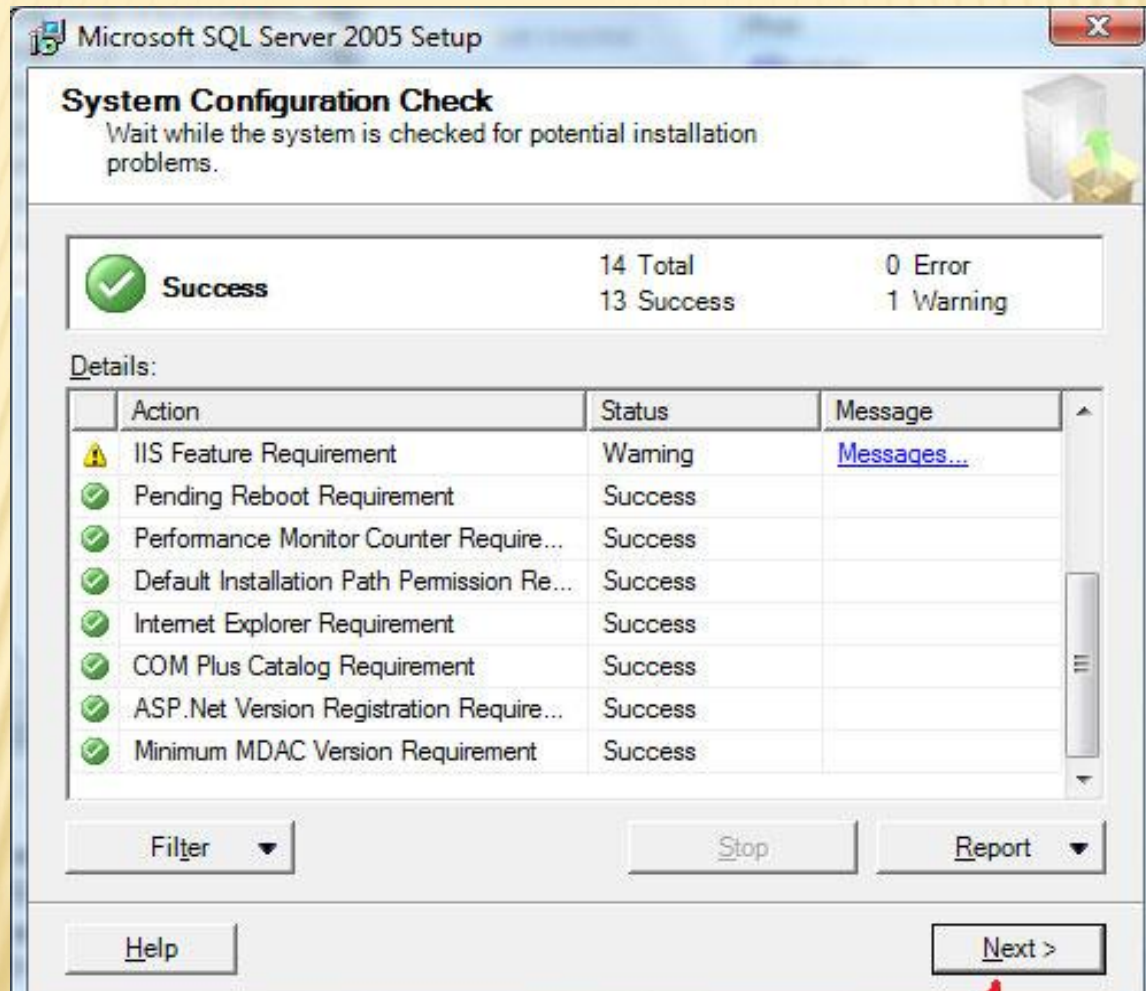
ЛИЦЕНЗИОННОЕ СОГЛАШЕНИЕ



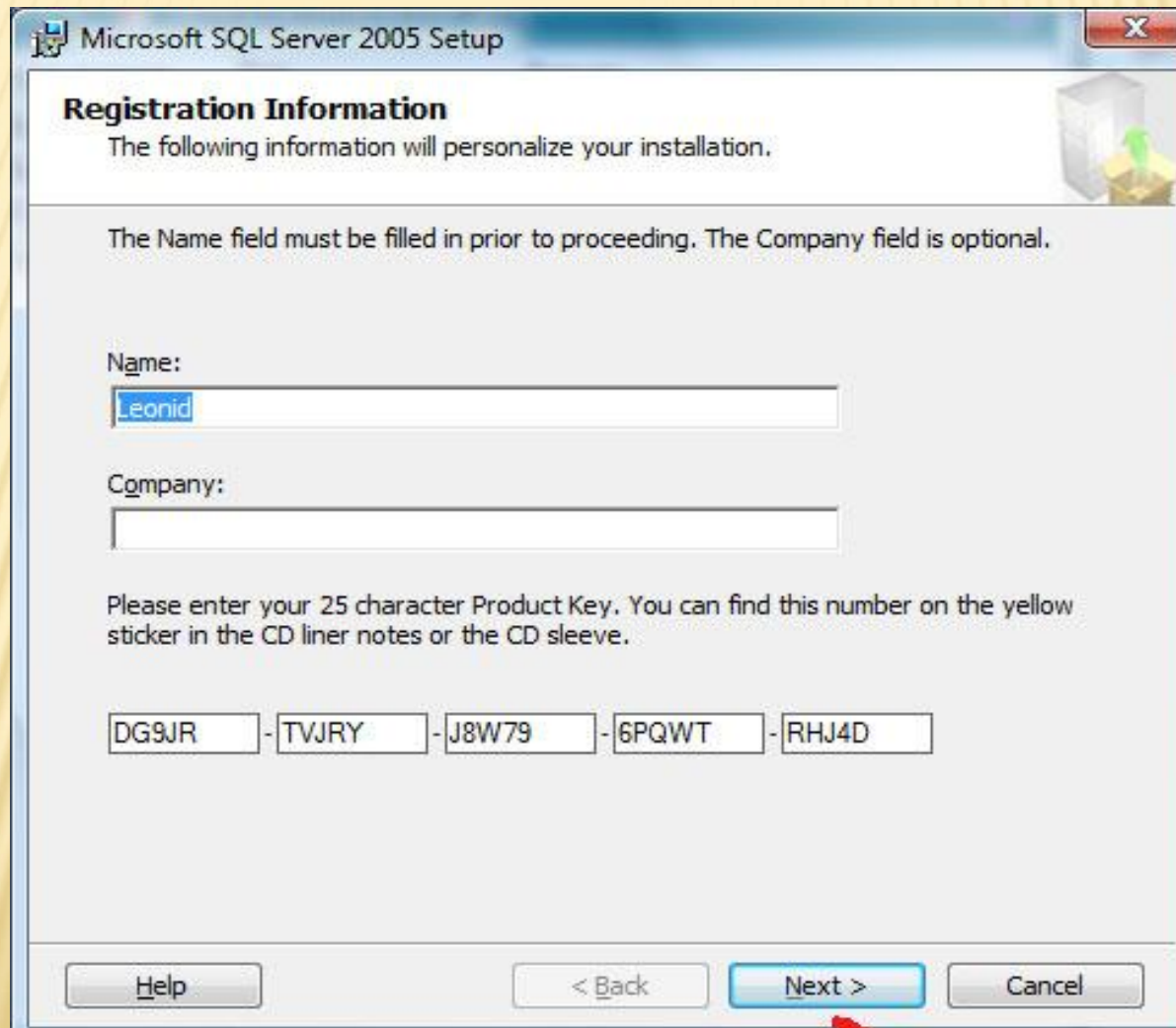
СООБЩЕНИЕ ОБ УСТАНОВКЕ КОМПОНЕНТОВ



ПРОВЕРКА КОНФИГУРАЦИИ ПК



ВВОД СЕРИЙНОГО НОМЕРА

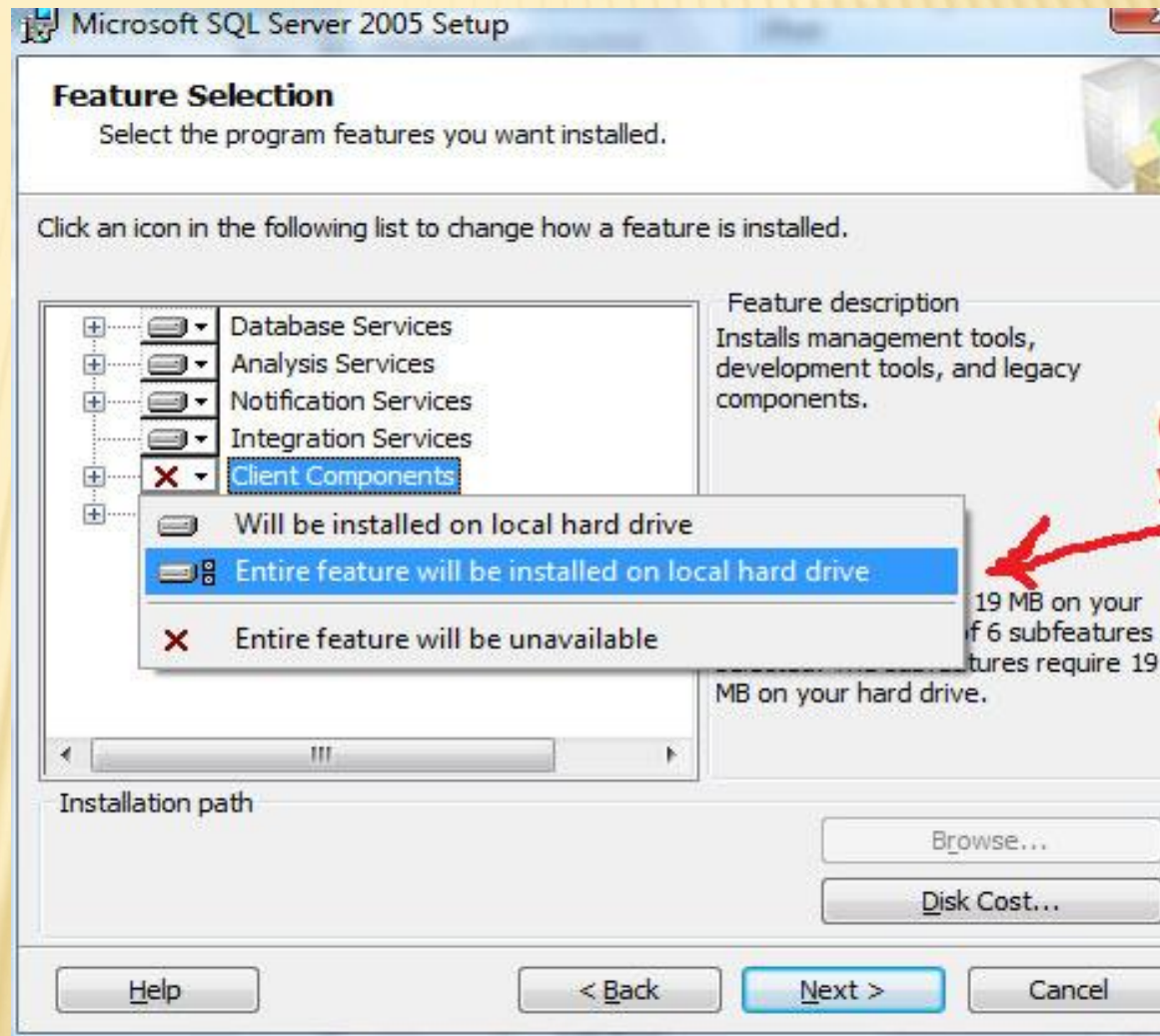


The screenshot shows the 'Registration Information' dialog box from the Microsoft SQL Server 2005 Setup. The window title is 'Microsoft SQL Server 2005 Setup'. The dialog contains the following elements:

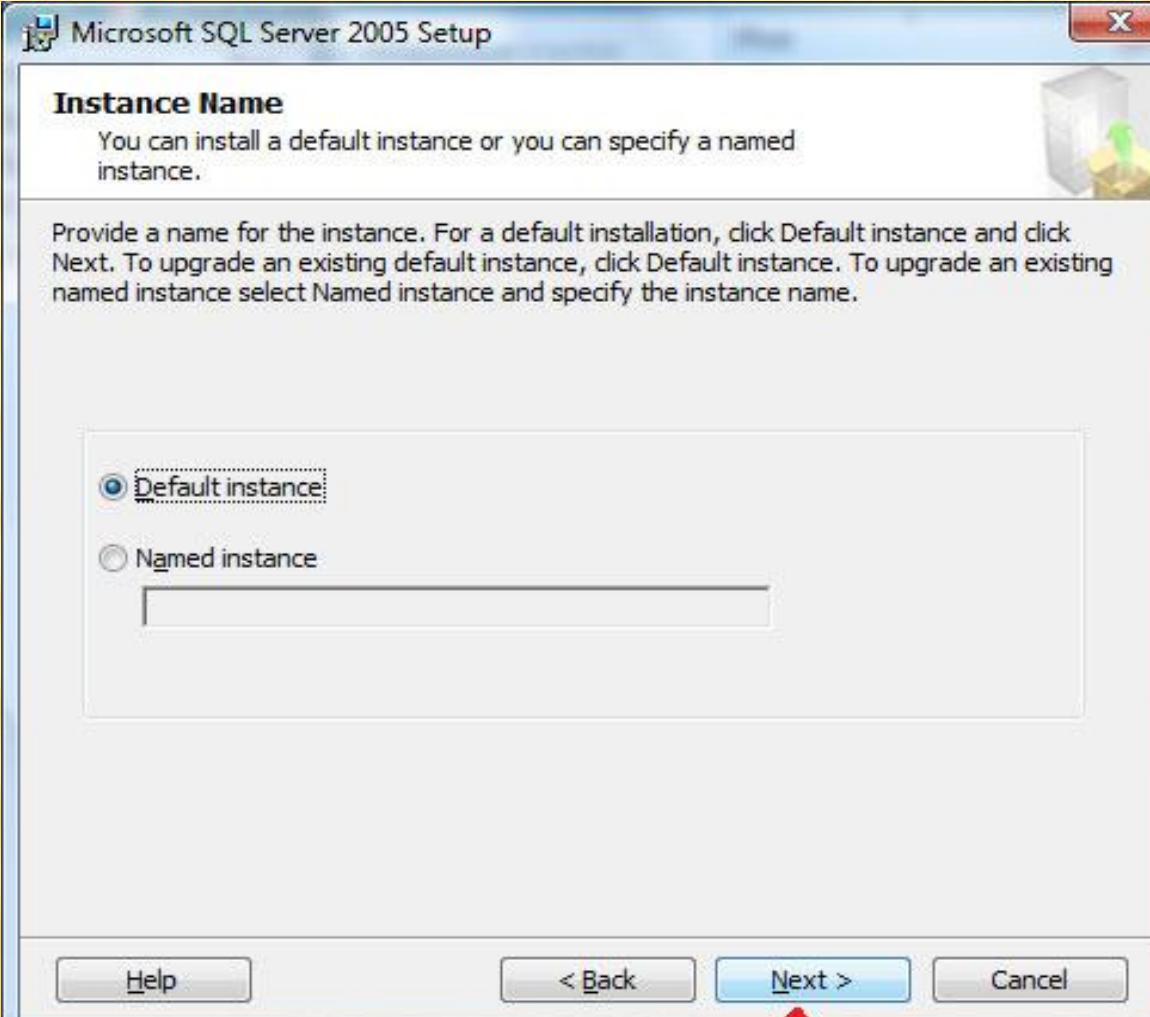
- Registration Information**: A section header with a small icon of a server and a green arrow pointing to a box.
- The following information will personalize your installation.**: A descriptive sentence.
- The Name field must be filled in prior to proceeding. The Company field is optional.**: A note about the required fields.
- Name:** A text input field containing the text 'Leonid'.
- Company:** An empty text input field.
- Please enter your 25 character Product Key. You can find this number on the yellow sticker in the CD liner notes or the CD sleeve.**: A note about the product key.
- Product Key:** A series of five input fields containing the characters 'DG9JR', 'TVJRY', 'J8W79', '6PQWT', and 'RHJ4D' respectively, separated by hyphens.
- Buttons:** At the bottom, there are four buttons: 'Help', '< Back', 'Next >', and 'Cancel'. The 'Next >' button is highlighted in blue.

ВЫБОР КОМПОНЕНТОВ ДЛЯ УСТАНОВКИ

- SQL Server Database Services
- Analysis Services
- Reporting Services
- Notification Services
- Integration Services
- Workstation components



ВЫБОР ИМЕНИ ДЛЯ ЭКЗЕМПЛЯРА



The image shows a screenshot of the 'Instance Name' dialog box in the Microsoft SQL Server 2005 Setup wizard. The window title is 'Microsoft SQL Server 2005 Setup'. The dialog box contains the following elements:

- Instance Name** (Section Header)
- Text: "You can install a default instance or you can specify a named instance." (Accompanied by a server rack icon)
- Text: "Provide a name for the instance. For a default installation, click Default instance and click Next. To upgrade an existing default instance, click Default instance. To upgrade an existing named instance select Named instance and specify the instance name." (Accompanied by a server rack icon)
- Two radio button options:
 - Default instance:**
 - Named instance**
- A text input field for the instance name, which is currently empty.
- Navigation buttons at the bottom: **Help**, **< Back**, **Next >** (highlighted in blue), and **Cancel**.

ВЫБОР УЧЕТНОЙ ЗАПИСИ ДЛЯ ЗАПУСКА СЛУЖБЫ

Microsoft SQL Server 2005 Setup

Service Account

Service accounts define which accounts to log in.

Customize for each service account

Service:

Use the built-in System account Local system

Use a domain user_ account

Username:

Password:

Domain:

Start services at the end of setup

SQL Server SQL Browser

SQL Server Agent

Analysis Services

Help < Back Next > Cancel

РЕЖИМ ПРОВЕРКИ ПОДЛИННОСТИ И ВВОД ПАРОЛЯ ДЛЯ УЧЕТНОЙ ЗАПИСИ SA

Microsoft SQL Server 2005 Setup

Authentication Mode

The authentication mode specifies the security used when connecting to SQL Server.

Select the authentication mode to use for this installation.

Windows Authentication Mode

Mixed Mode (Windows Authentication and SQL Server Authentication)

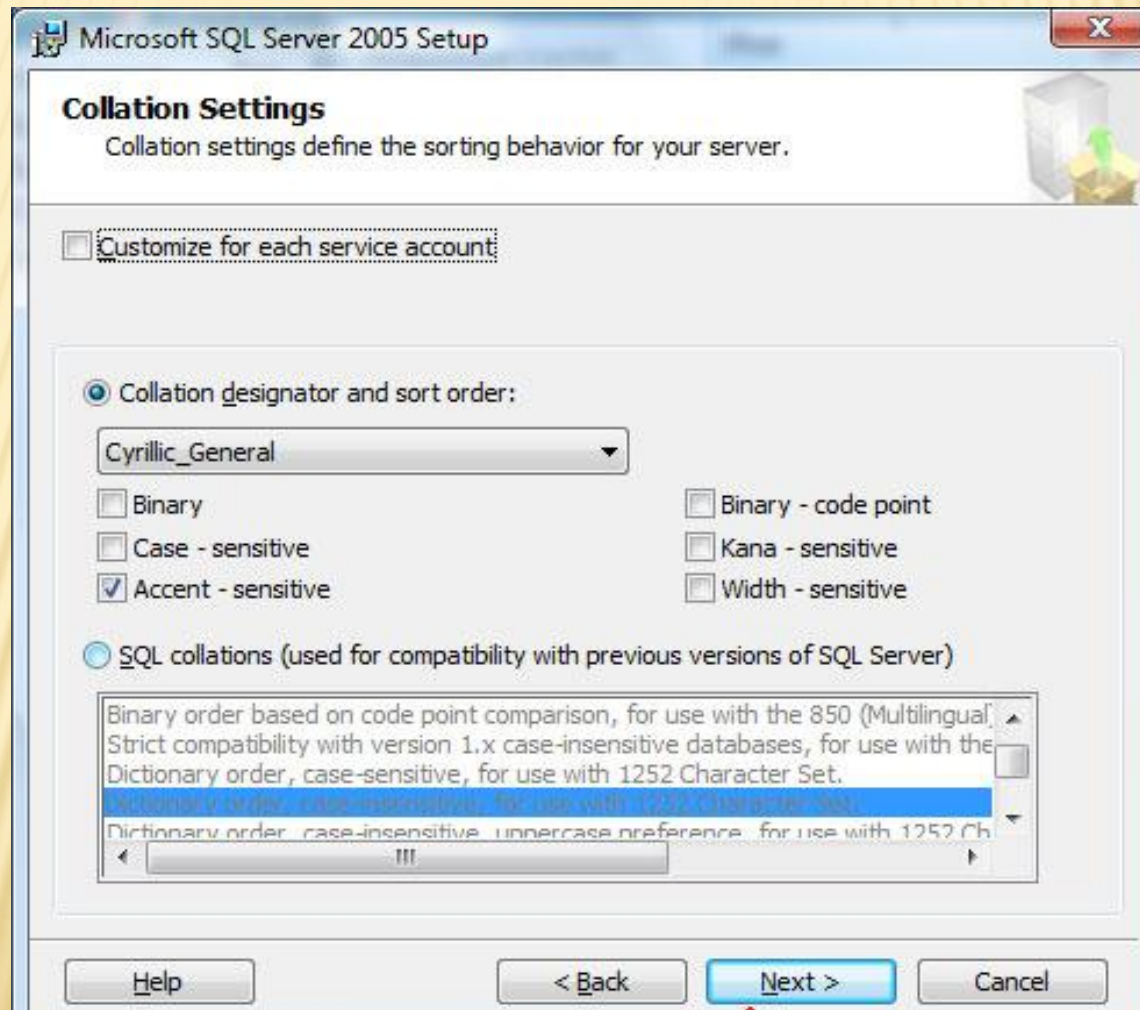
Specify the sa login password below:

Enter password:
.....

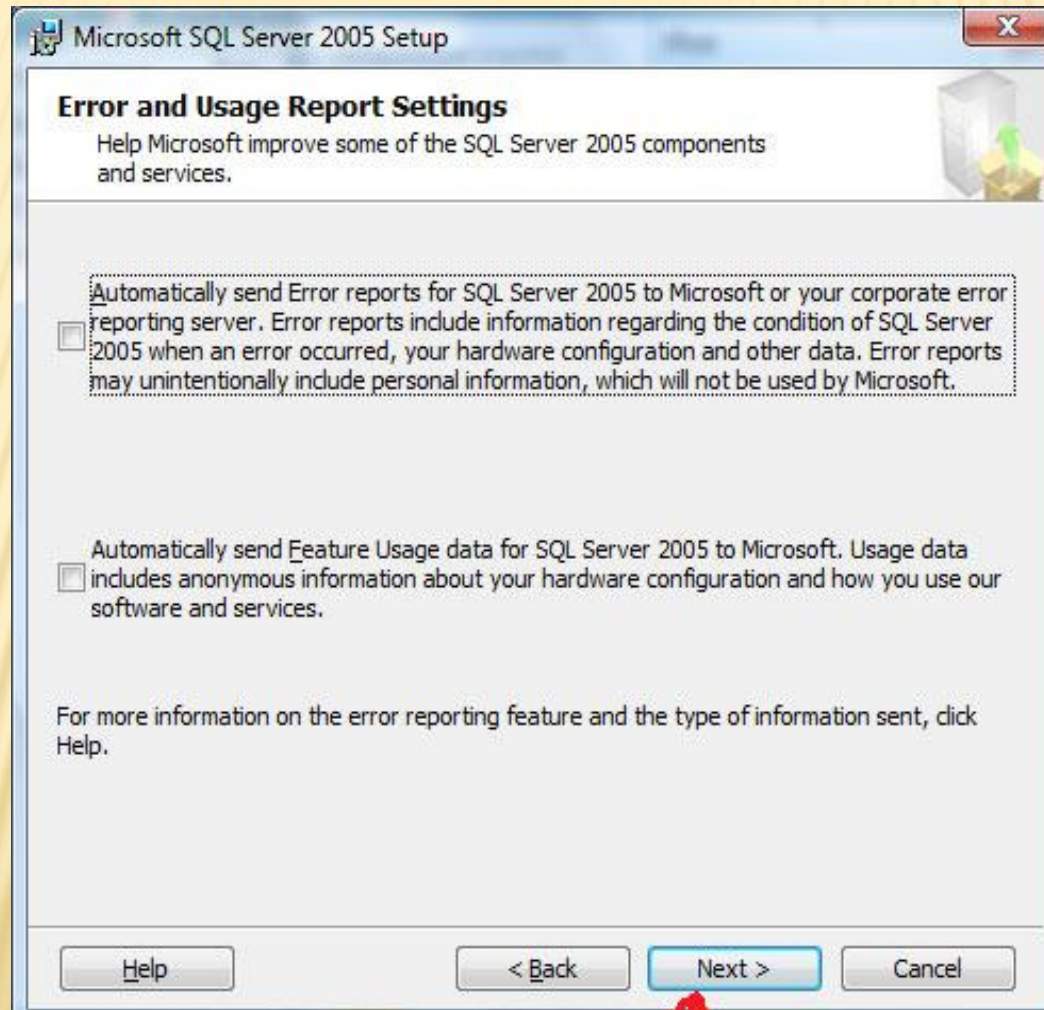
Confirm password:
.....

Help < Back Next >

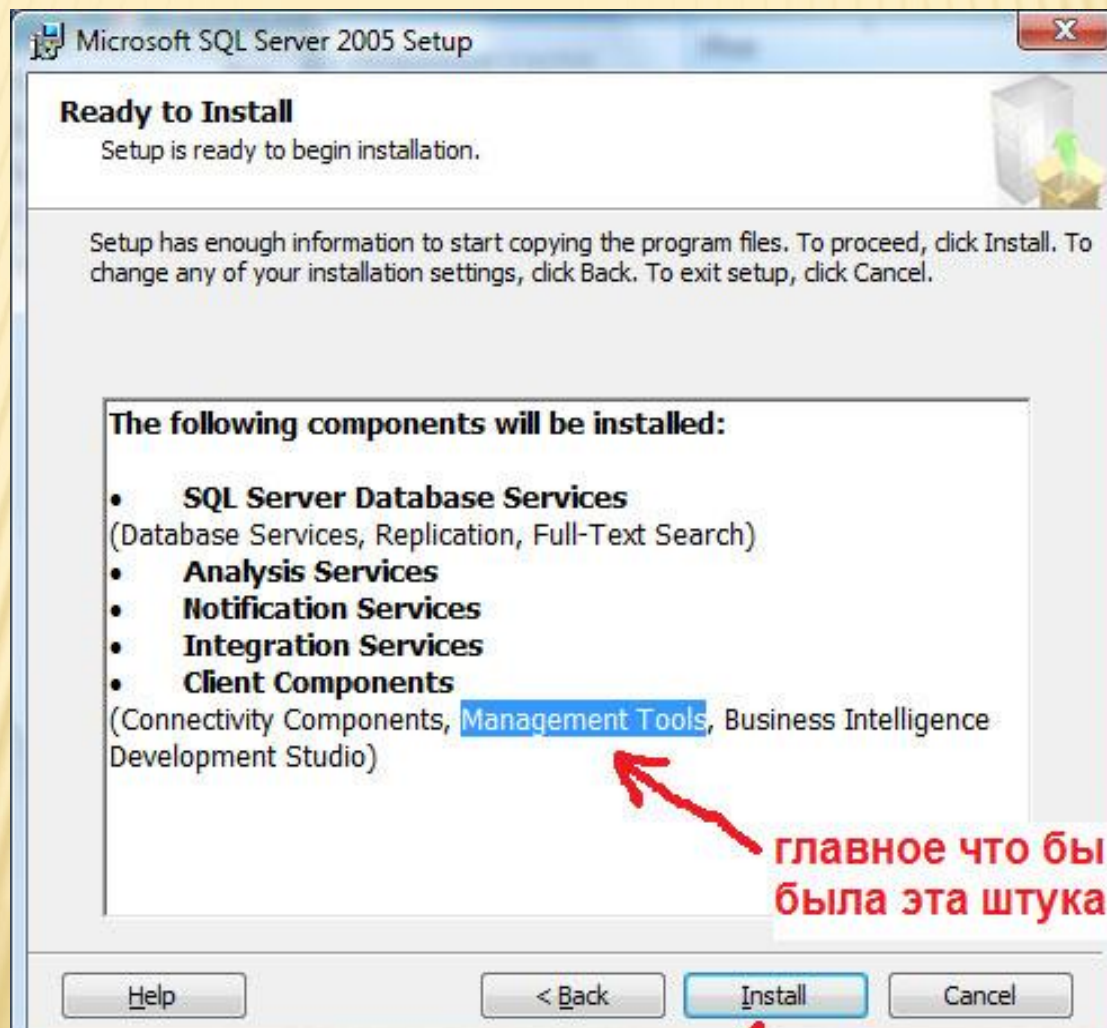
ВЫБОР РЕЖИМА СОРТИРОВКИ



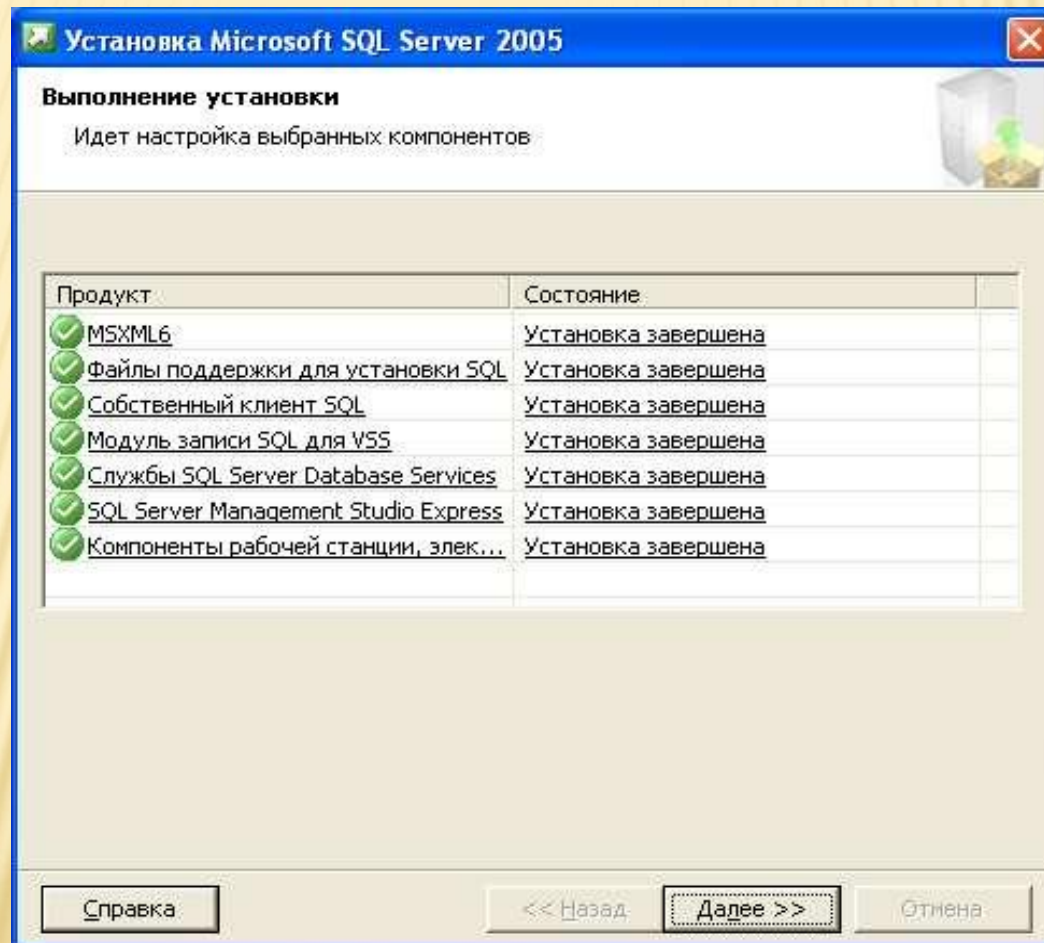
ПАРАМЕТРЫ ОТЧЕТОВ ОБ ОШИБКАХ



СООБЩЕНИЕ О ГОТОВНОСТИ К УСТАНОВКЕ



ЗАВЕРШЕНИЕ УСТАНОВКИ



СРЕДСТВА АДМИНИСТРИРОВАНИЯ SQL SERVER 2005

- ▣ **SQL Server Management Studio**
- ▣ **Business Intelligence Development Studio**
- ▣ **SQLCmd**
- ▣ **SQL Server Configuration Management**
- ▣ **SQL Server Profiler**