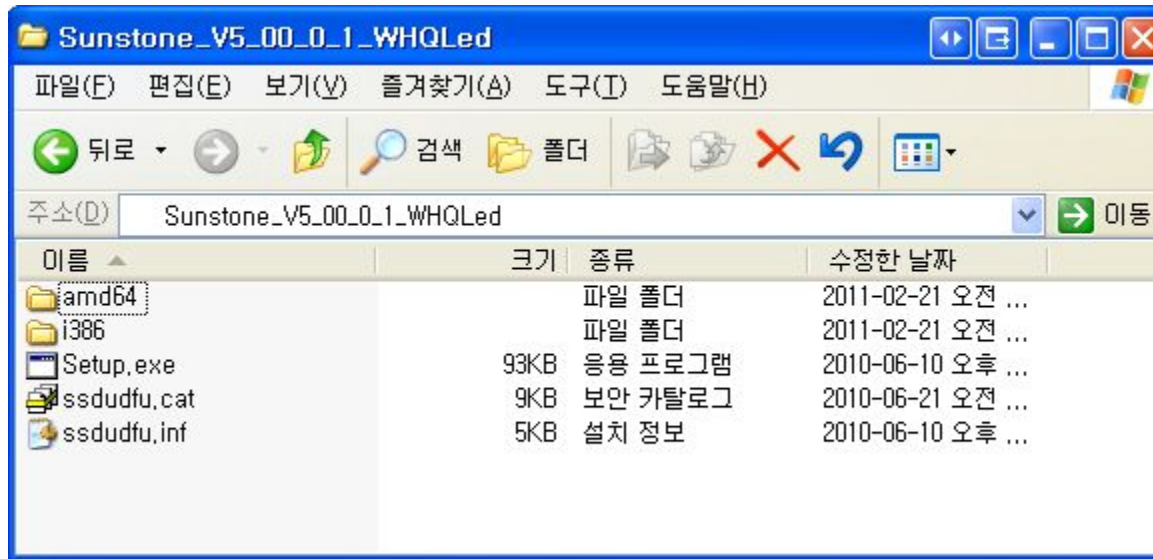


C3520升级方法

Setup USB Driver!

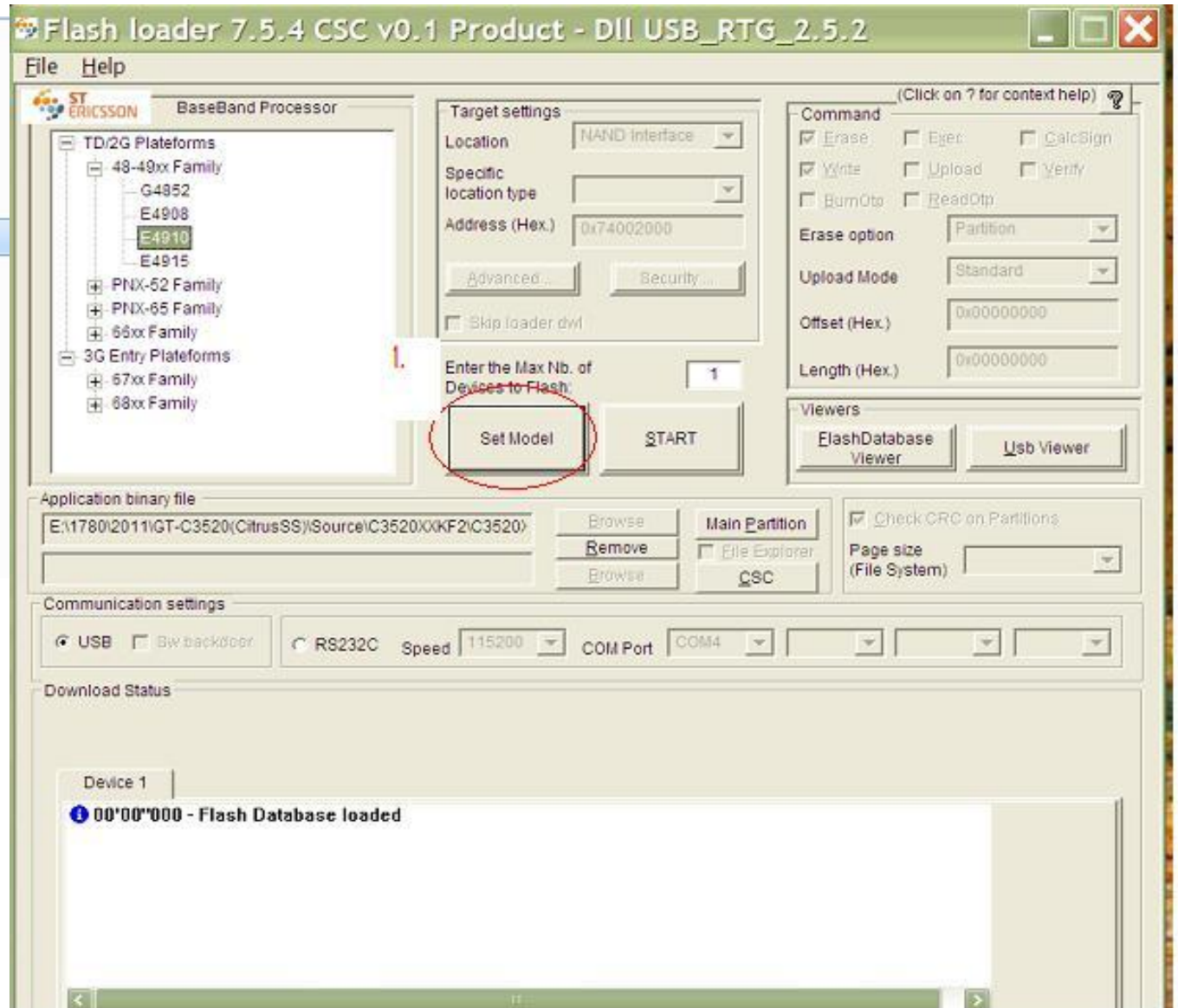
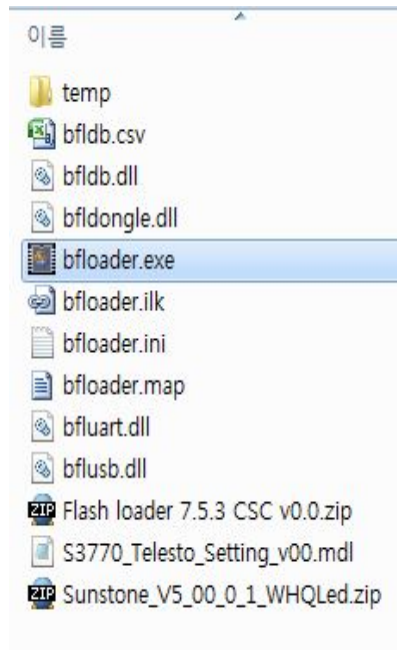
1. 运行“Setup.exe”，此文件在“Sunstone_V5_00_0_1_WHQLed”文件夹中。



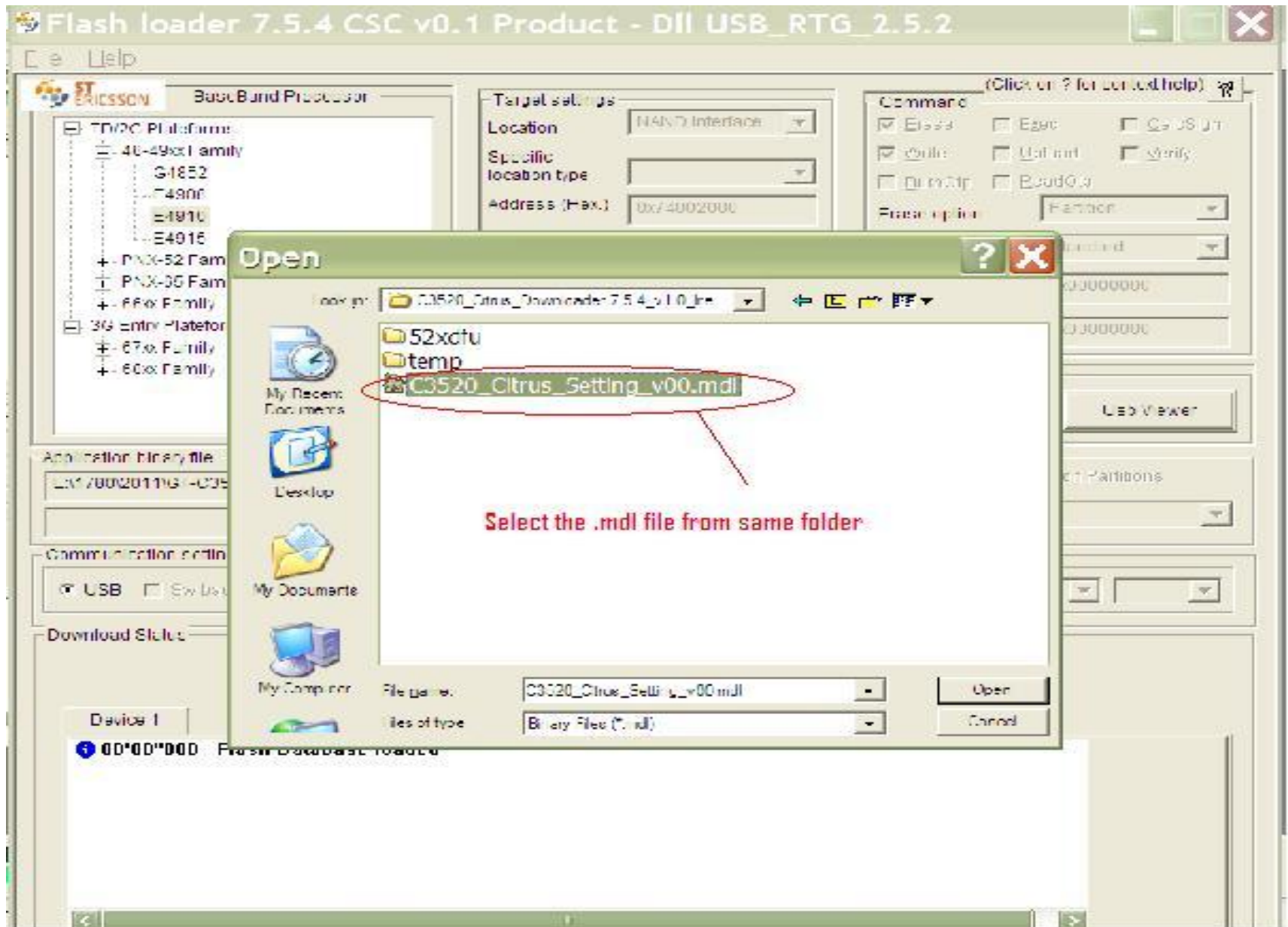
2. Click the "Install".



1. 运行 bfloder.exe



2. 选择 Set Model



3. 选择 Main PTT 文件 (在BIN文件夹里面)

Flash loader 7.5.4 CSC v0.1 Product - DII USB_RTG_2.5.2

File Help

ST ERICSSON BaseBand Processor

TD/2G Platforms

- 48-49xx Family
 - G4852
 - E4908
 - E4910
 - E4915
- PNX-52 Family
- PNX-65 Family
- 66xx Family
- 3G Entry Platforms
 - 67xx Family
 - 68xx Family

Target settings

Location: NAND Interface

Specific location type: [Dropdown]

Address (Hex.): 0x74002000

Advanced ... Security ...

Skip loader dwl

Enter the Max Nb. of Devices to Flash: 8

Set Model START

Application binary file

C:\Documents and Settings\user\Desktop\Citrus Binary\C3520OI

Browse Remove Browse File Explorer CSC

FlashLoaderPartitionTable

Partitions 1-4 | Partitions 5-8 | Partitions 9-12 | Partitions 13-16 | Partitions 17-20

Partition	Partition
Name: IMAGE	Name: LCDACT
Path: C3520OPEN.bmp	Path: C3520OPEN.bootlcdact
Size: 0x000C0000	Size: 0x00020000
Content: 0x0003A438	Content: 0x00002784
Margin: 0x00085BC8	Margin: 0x0001D87C
<input checked="" type="checkbox"/> Selected	<input checked="" type="checkbox"/> Selected
Partition	Partition
Name: DATA_RW	Name: DSP
Path: C3520OPEN.cl\VER_R	Path: C3520OPEN.cl\VER_F
Size: 0x00100000	Size: 0x00100000
Content: 0x000A103C	Content: 0x00079318
Margin: 0x0005EFC4	Margin: 0x00086CE8
<input checked="" type="checkbox"/> Selected	<input checked="" type="checkbox"/> Selected

C:\Documents and Settings\user\Desktop\Citrus Binary\C3520OPE

Cancel OK

Open

Look in: Citrus Binary

- C3520OPEN.cl
- C3520OPEN.ptt

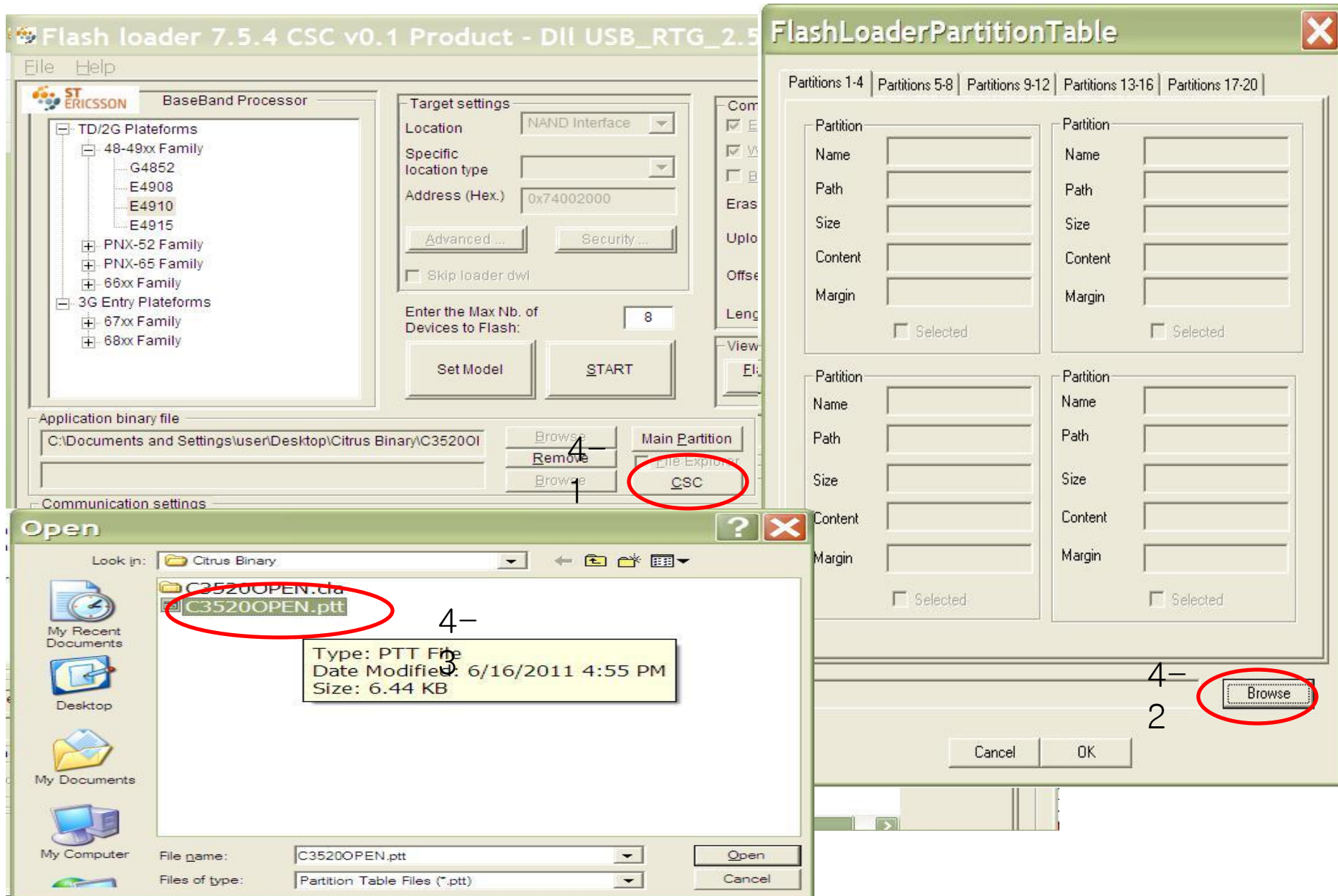
Type: PTT File
Date Modified: 6/16/2011 4:55 PM
Size: 6.44 KB

File name: C3520OPEN.ptt

Files of type: Partition Table Files (*.ptt)

Open Cancel

4. 选择 CSC PTT文件 (在CSC文件夹里面)



5. Click Start and Download binary

Flash loader 7.5.4 CSC v0.1 Product - Dll USB_RTG_2.5.2

File Help

ST ERICSSON BaseBand Processor

TD/2G Platforms

- 48-49xx Family
 - G4852
 - E4908
 - E4910
 - E4915
- PNX-52 Family
- PNX-65 Family
- 66xx Family
- 3G Entry Platforms
 - 67xx Family
 - 68xx Family

Target settings

Location: NAND Interface

Specific location type: [Dropdown]

Address (Hex.): 0x74002000

Advanced ... Security ...

Skip loader.dwl

Enter the Max Nb. of Devices to Flash: 8

Set Model STOP

Viewers: FlashDatabase Viewer Usb Viewer

Application binary file

E:\1780\2011\GT-C3520(CitrusSS)\Source\C3520XXKF2\C3520\ [Browse] Mail

C:\Documents and Settings\user\Desktop\Citrus Binary\C3520OI [Browse] File Explorer

Check CRC on Partitions: Page size (File System) [Dropdown]

Communication settings

USB Sw backdoor

RS232C: Speed 115200 COM Port COM4

Download Status

Device 1 Device 2 Device 3 Device 4 Device 5 Device 6 Device 7 Device 8

00'00''000 - Flash Database loaded

27'17''110 - Waiting for board reset

after clicking on Start; wait for this message....now connect USB cable to phone

升级

