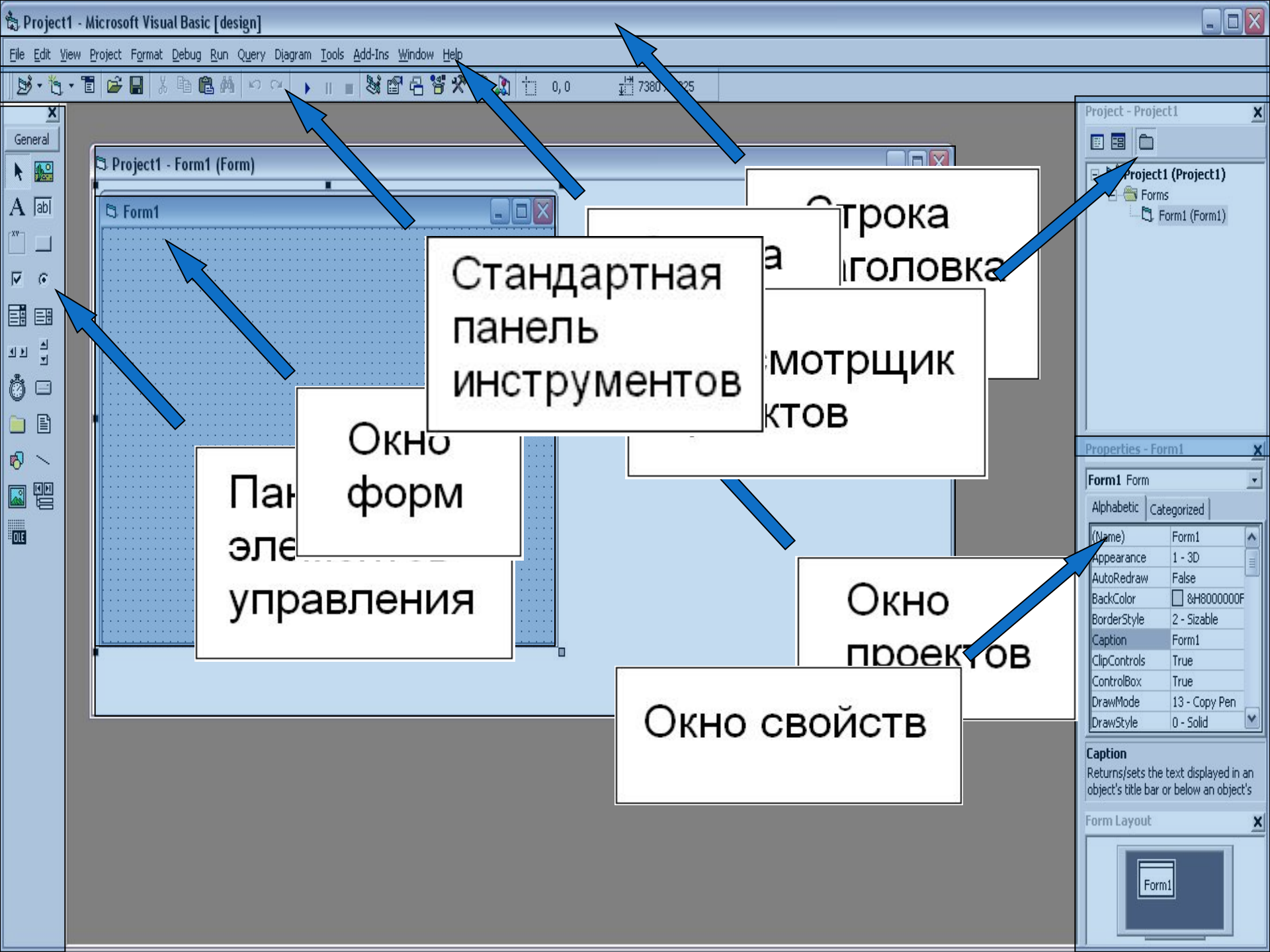


**Интерфейс
MS Visual Basic 6.0
Professional Edition**

Visual Basic представляет собой интегрированную среду разработки, которая содержит набор инструментов, облегчающих и ускоряющих процесс разработки приложений.



Стандартная
панель
инструментов

Окно
форм

Панель
элементов
управления

Окно свойств

Окно
проектов

Строка
заголовка

Монитор
объектов

Project - Project1

- Project1 (Project1)
 - Forms
 - Form1 (Form1)

Properties - Form1

Form1 Form

Alphabetic | Categorized

(Name)	Form1
Appearance	1 - 3D
AutoRedraw	False
BackColor	<input type="checkbox"/> &H800000F
BorderStyle	2 - Sizable
Caption	Form1
ClipControls	True
ControlBox	True
DrawMode	13 - Copy Pen
DrawStyle	0 - Solid

Caption
Returns/sets the text displayed in an object's title bar or below an object's

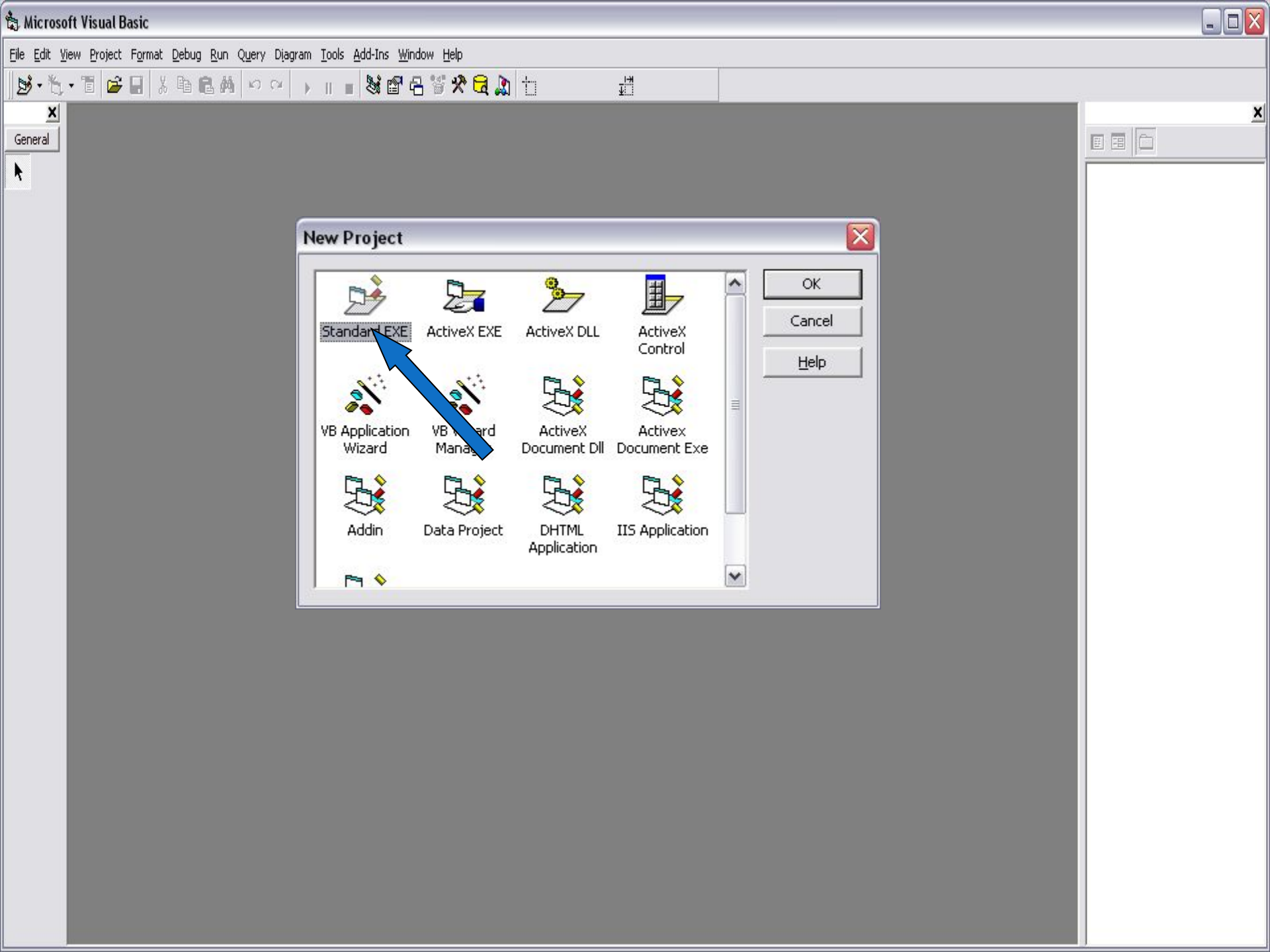
Form Layout

ЭТАПЫ СОЗДАНИЯ ПРИЛОЖЕНИЯ:

1. Постановка задачи.
2. Разработка интерфейса.
3. Программирование.
4. Отладка программы.
5. Сохранение проекта.

ПРИМЕР СОЗДАНИЯ ПРОГРАММЫ В VISUAL BASIC

Создать программу, в которой при нажатии кнопки (Показать рисунок) картинка появляется, а при нажатии кнопки (Убрать рисунок) она исчезает.

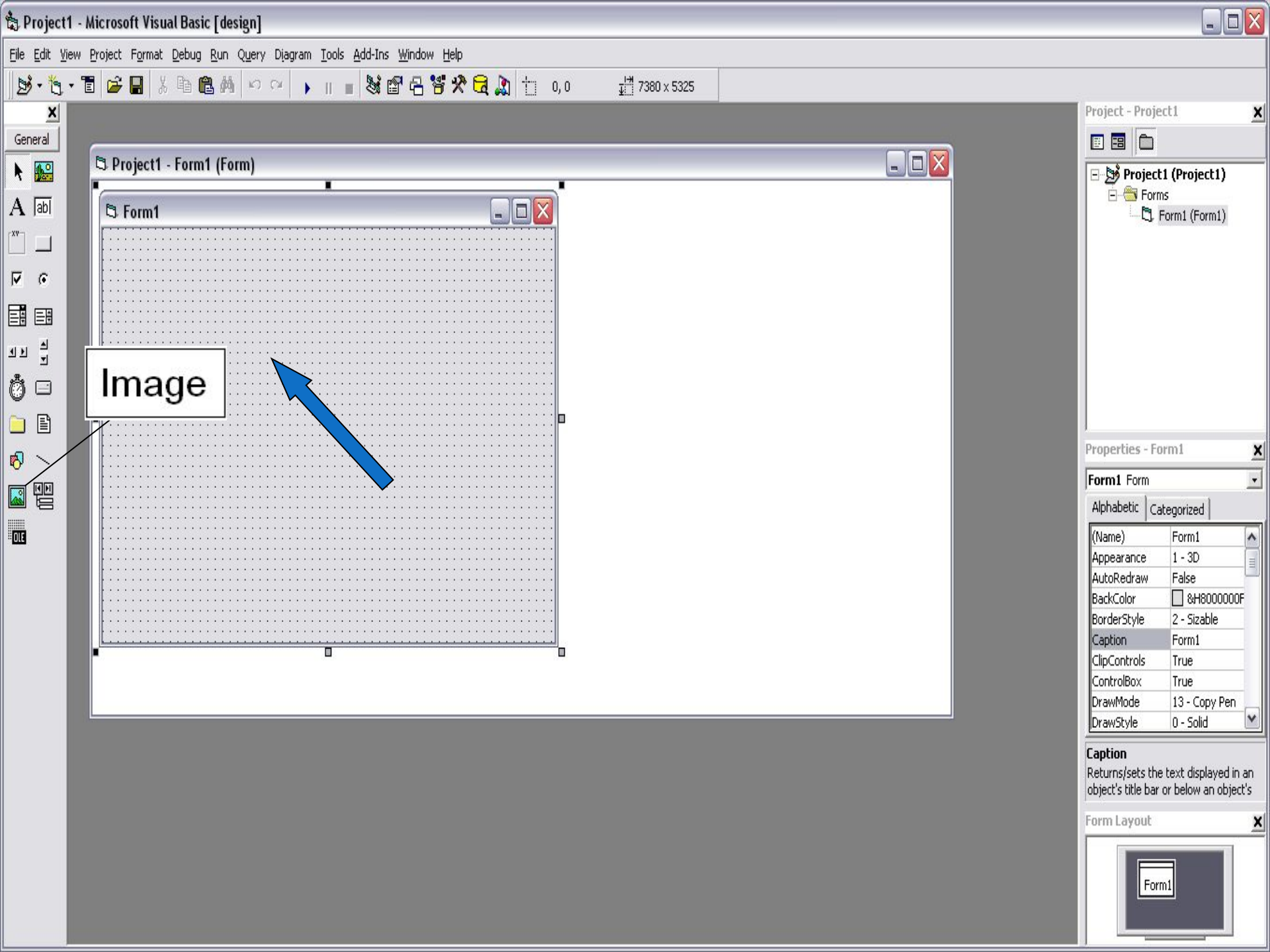


General

New Project

Standard EXE	ActiveX EXE	ActiveX DLL	ActiveX Control
VB Application Wizard	VB Wizard Manager	ActiveX Document DLL	Activex Document Exe
Addin	Data Project	DHTML Application	IIS Application

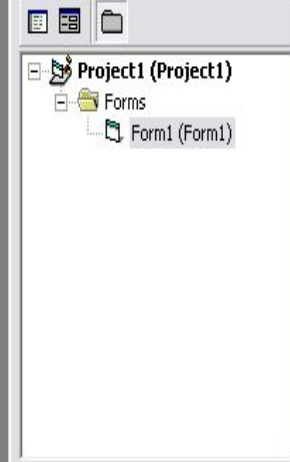
OK
Cancel
Help



Project1 - Form1 (Form)

Form1

Image



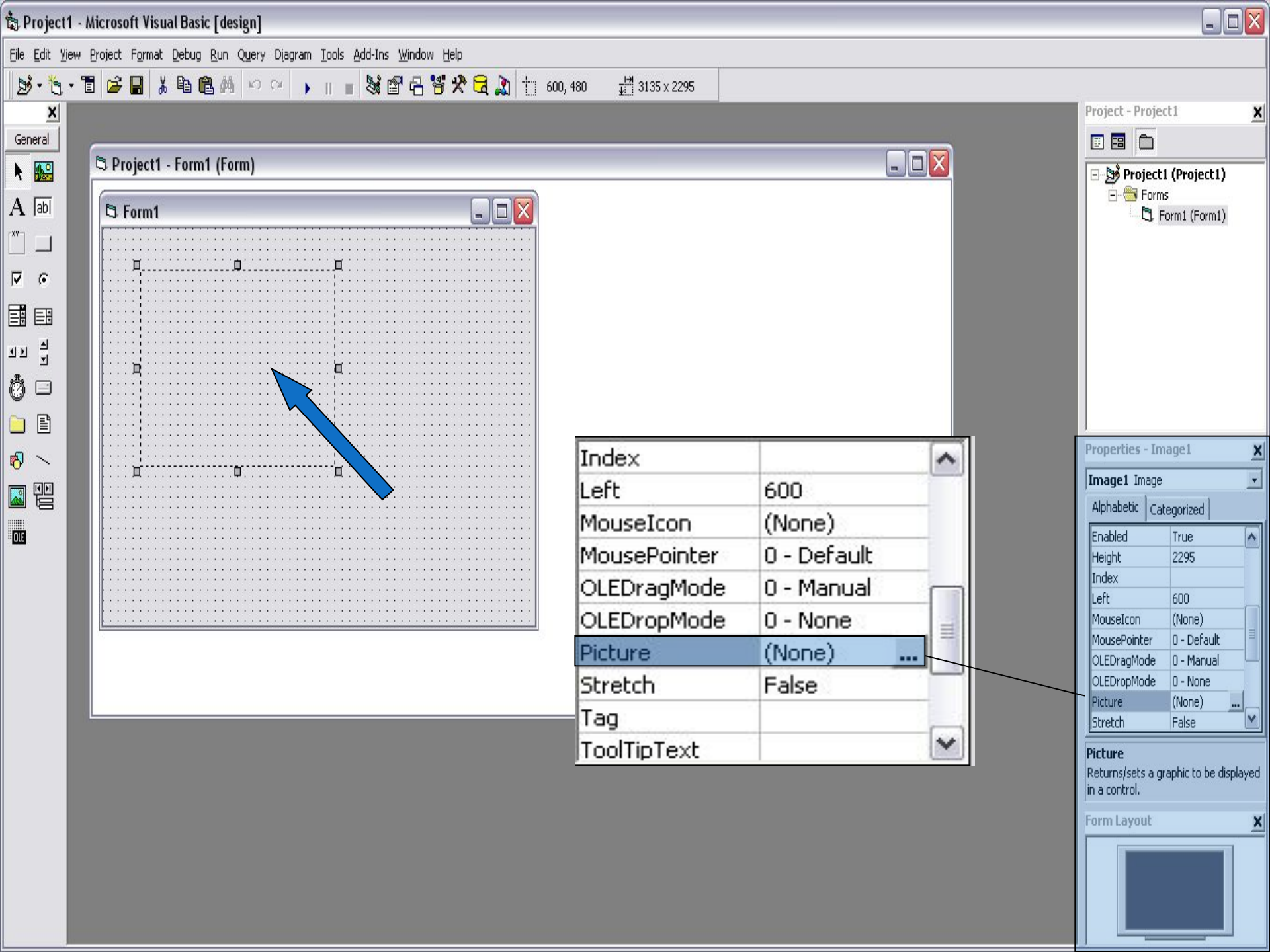
Form1 Form

Alphabetic Categorized

(Name)	Form1
Appearance	1 - 3D
AutoRedraw	False
BackColor	<input type="checkbox"/> &H800000F
BorderStyle	2 - Sizable
Caption	Form1
ClipControls	True
ControlBox	True
DrawMode	13 - Copy Pen
DrawStyle	0 - Solid

Caption
Returns/sets the text displayed in an object's title bar or below an object's





Project1 - Form1 (Form)

Form1

Index	
Left	600
MouseIcon	(None)
MousePointer	0 - Default
OLEDragMode	0 - Manual
OLEDropMode	0 - None
Picture	(None) ...
Stretch	False
Tag	
ToolTipText	

Project - Project1

- Project1 (Project1)
 - Forms
 - Form1 (Form1)

Properties - Image1

Image1 Image

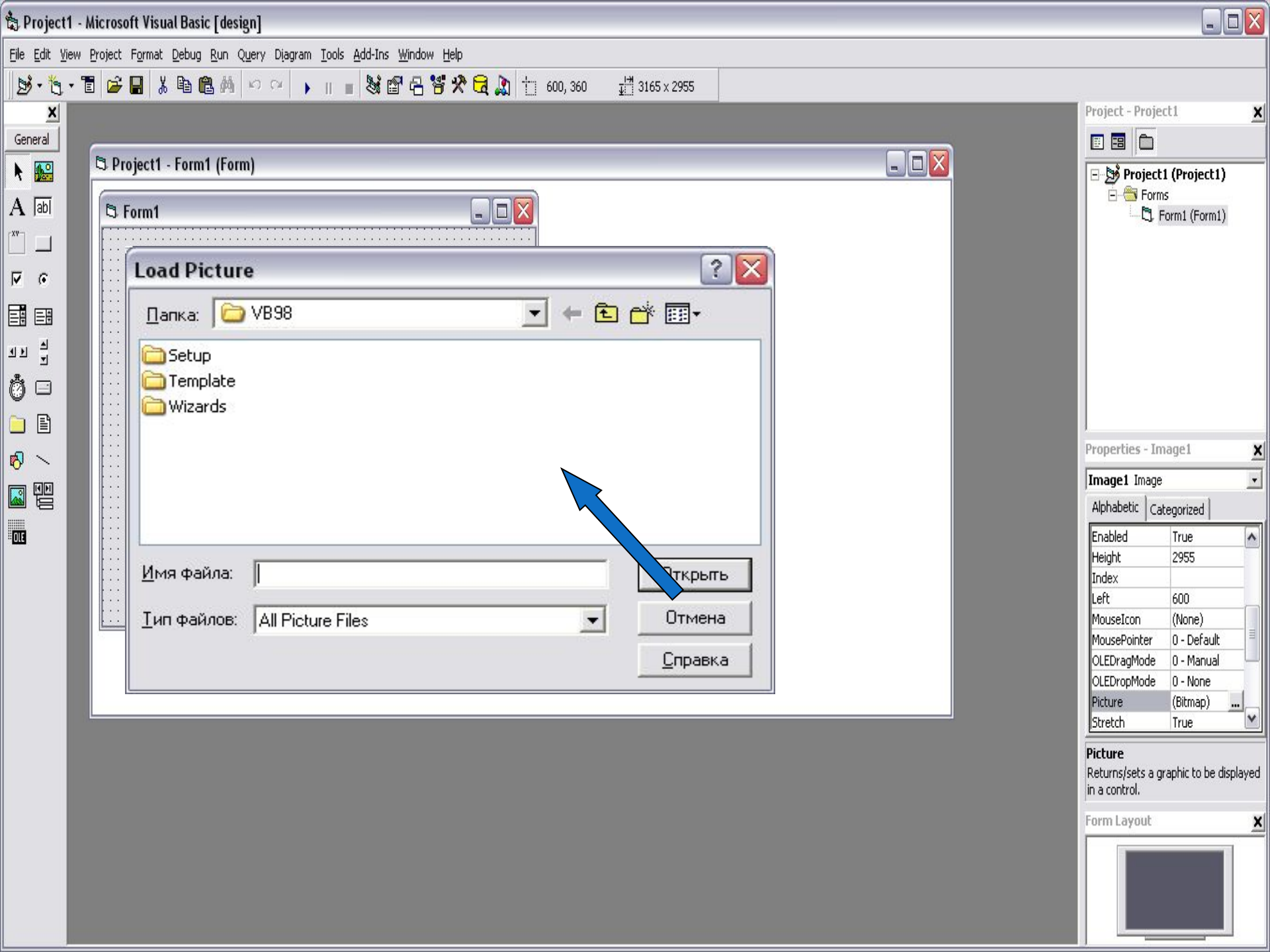
Alphabetic | Categorized

Enabled	True
Height	2295
Index	
Left	600
MouseIcon	(None)
MousePointer	0 - Default
OLEDragMode	0 - Manual
OLEDropMode	0 - None
Picture	(None) ...
Stretch	False

Picture

Returns/sets a graphic to be displayed in a control.

Form Layout



Project1 - Form1 (Form)

Form1

Load Picture

Папка: VB98

- Setup
- Template
- Wizards

Имя файла:

Тип файлов: All Picture Files

Открыть

Отмена

Справка

Project - Project1

- Project1 (Project1)
 - Forms
 - Form1 (Form1)

Properties - Image1

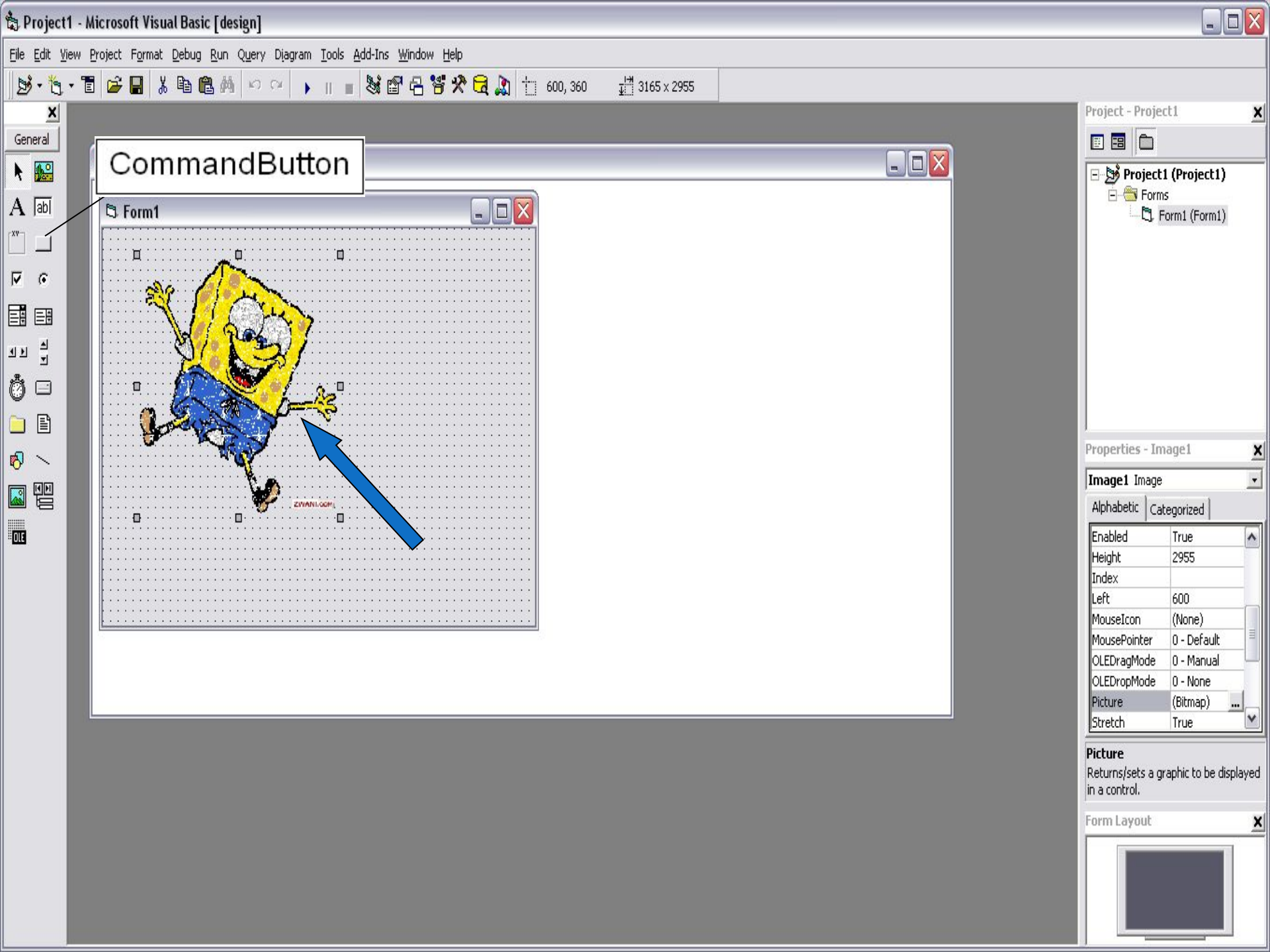
Image1 Image

Alphabetic | Categorized

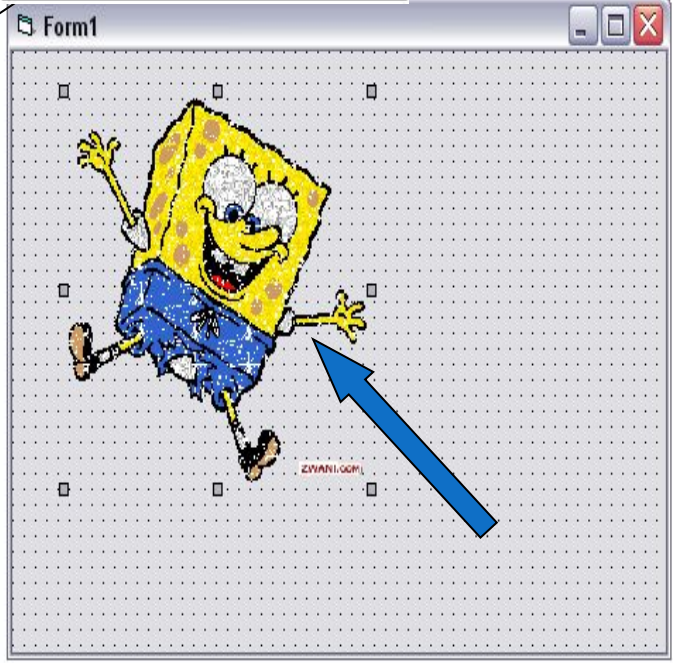
Enabled	True
Height	2955
Index	
Left	600
MouseIcon	(None)
MousePointer	0 - Default
OLEDragMode	0 - Manual
OLEDropMode	0 - None
Picture	(Bitmap) ...
Stretch	True

Picture
Returns/sets a graphic to be displayed in a control.





CommandButton



Project - Project1

- Project1 (Project1)
 - Forms
 - Form1 (Form1)

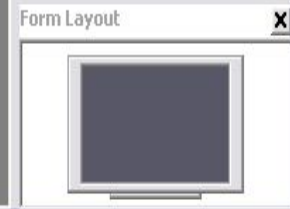
Properties - Image1

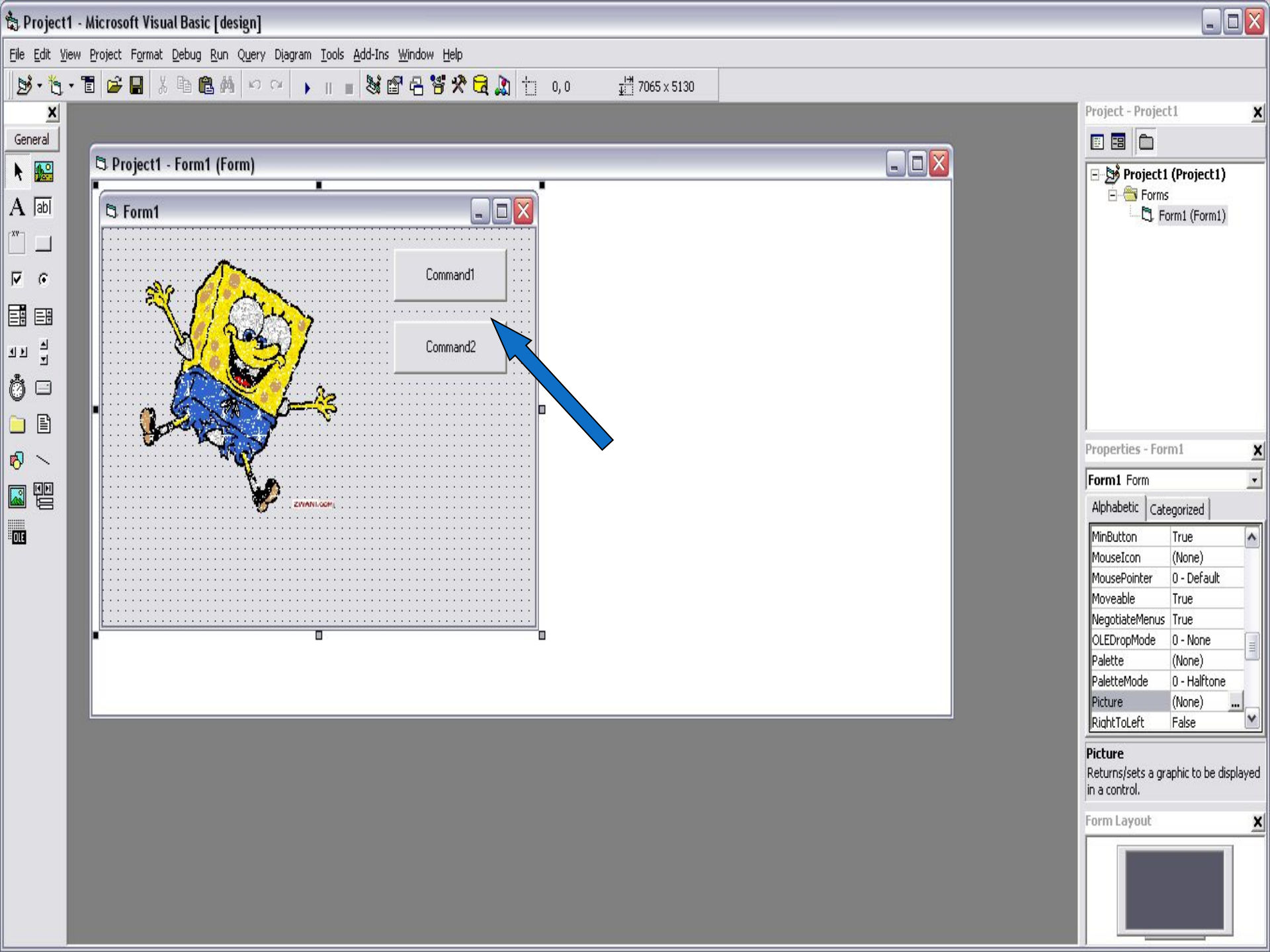
Image1 Image

Alphabetic Categorized

Enabled	True
Height	2955
Index	
Left	600
MouseIcon	(None)
MousePointer	0 - Default
OLEDragMode	0 - Manual
OLEDropMode	0 - None
Picture	(Bitmap) ...
Stretch	True

Picture
Returns/sets a graphic to be displayed in a control.





General

Project1 - Form1 (Form)

Form1

Command1

Command2

Project - Project1

Project1 (Project1)
Forms
Form1 (Form1)

Properties - Form1

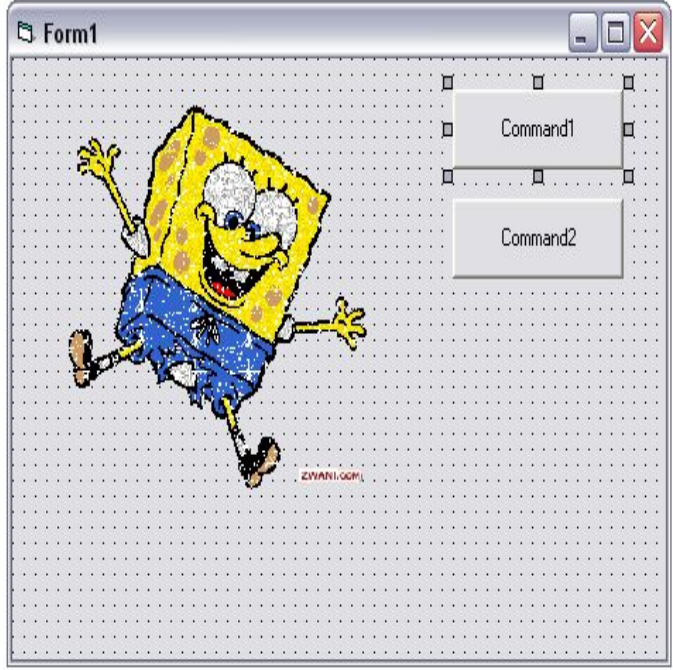
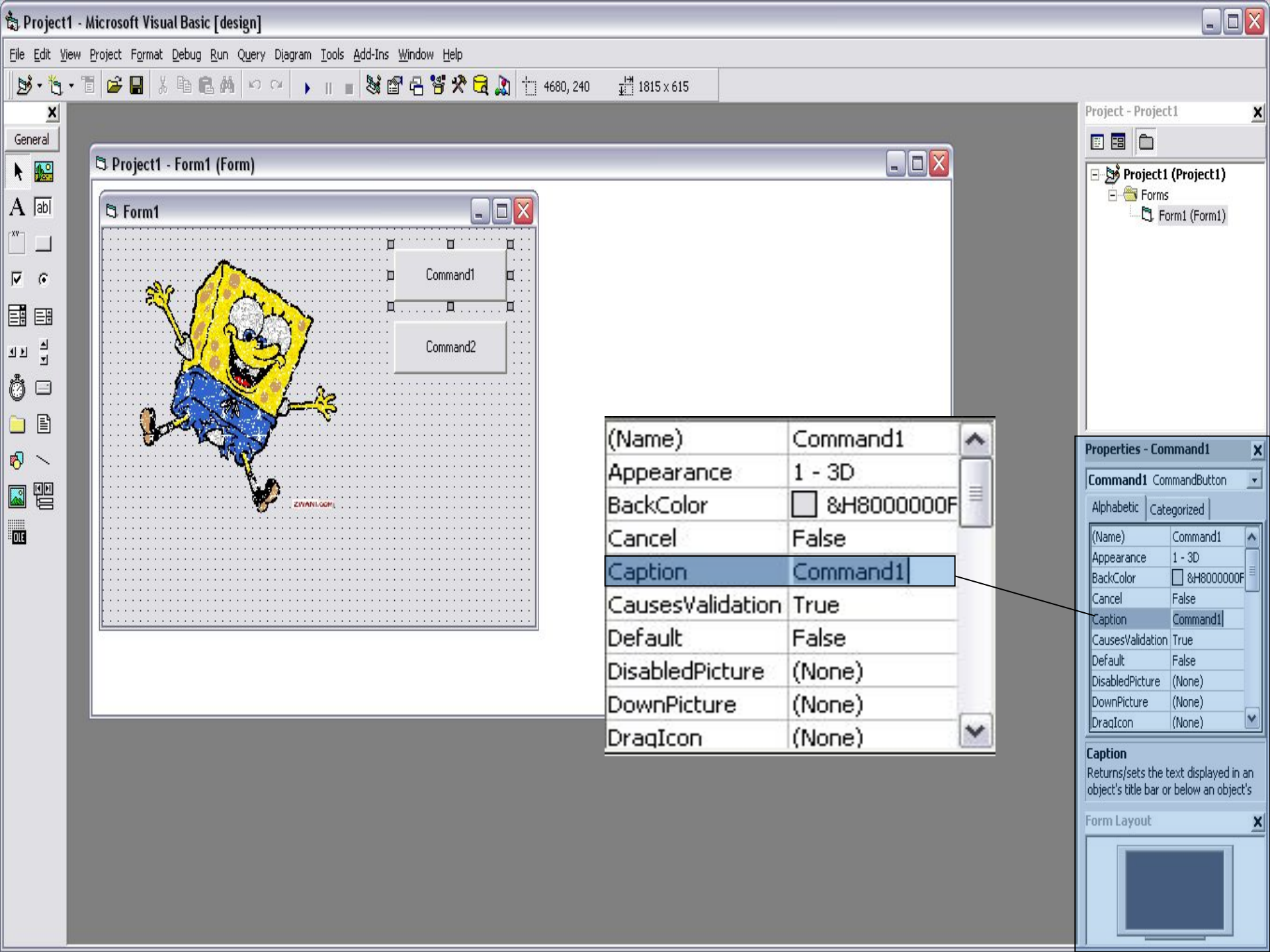
Form1 Form

Alphabetic	Categorized
MinButton	True
MouseIcon	(None)
MousePointer	0 - Default
Moveable	True
NegotiateMenus	True
OLEDropMode	0 - None
Palette	(None)
PaletteMode	0 - Halftone
Picture	(None) ...
RightToLeft	False

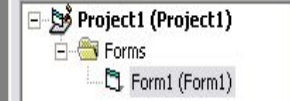
Picture
Returns/sets a graphic to be displayed in a control.

Form Layout





(Name)	Command1
Appearance	1 - 3D
BackColor	&H8000000F
Cancel	False
Caption	Command1
CausesValidation	True
Default	False
DisabledPicture	(None)
DownPicture	(None)
DragIcon	(None)



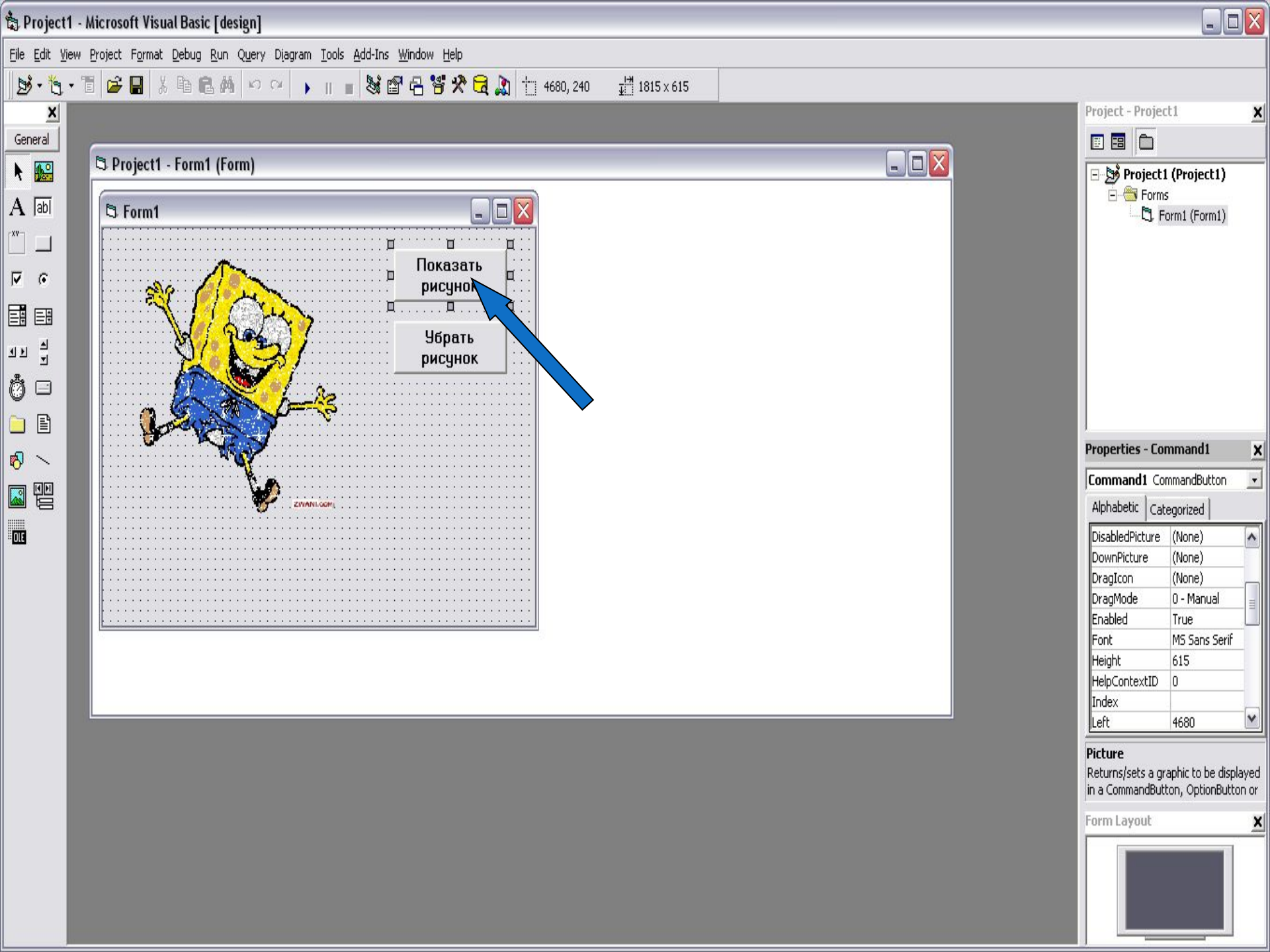
Command1 CommandButton

Alphabetic Categorized

(Name)	Command1
Appearance	1 - 3D
BackColor	&H8000000F
Cancel	False
Caption	Command1
CausesValidation	True
Default	False
DisabledPicture	(None)
DownPicture	(None)
DragIcon	(None)

Caption
Returns/sets the text displayed in an object's title bar or below an object's

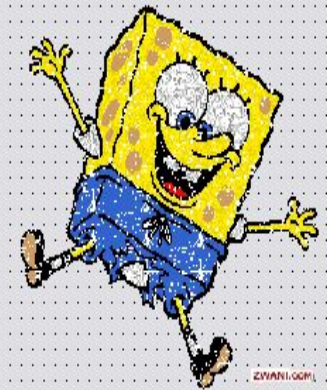




General

Project1 - Form1 (Form)

Form1



Показать рисунок

Убрать рисунок

Project - Project1

Project1 (Project1)
Forms
Form1 (Form1)

Properties - Command1

Command1 CommandButton

Alphabetic	Categorized
DisabledPicture	(None)
DownPicture	(None)
DragIcon	(None)
DragMode	0 - Manual
Enabled	True
Font	MS Sans Serif
Height	615
HelpContextID	0
Index	
Left	4680

Picture
Returns/sets a graphic to be displayed in a CommandButton, OptionButton or

Form Layout





Project1 - Form1 (Form)

Project1 - Form1 (Code)

Command1 Click

```
Private Sub Command1_Click()  
  
End Sub
```

Project - Project1

- Project1 (Project1)
 - Forms
 - Form1 (Form1)

Properties - Command1

Command1 CommandButton

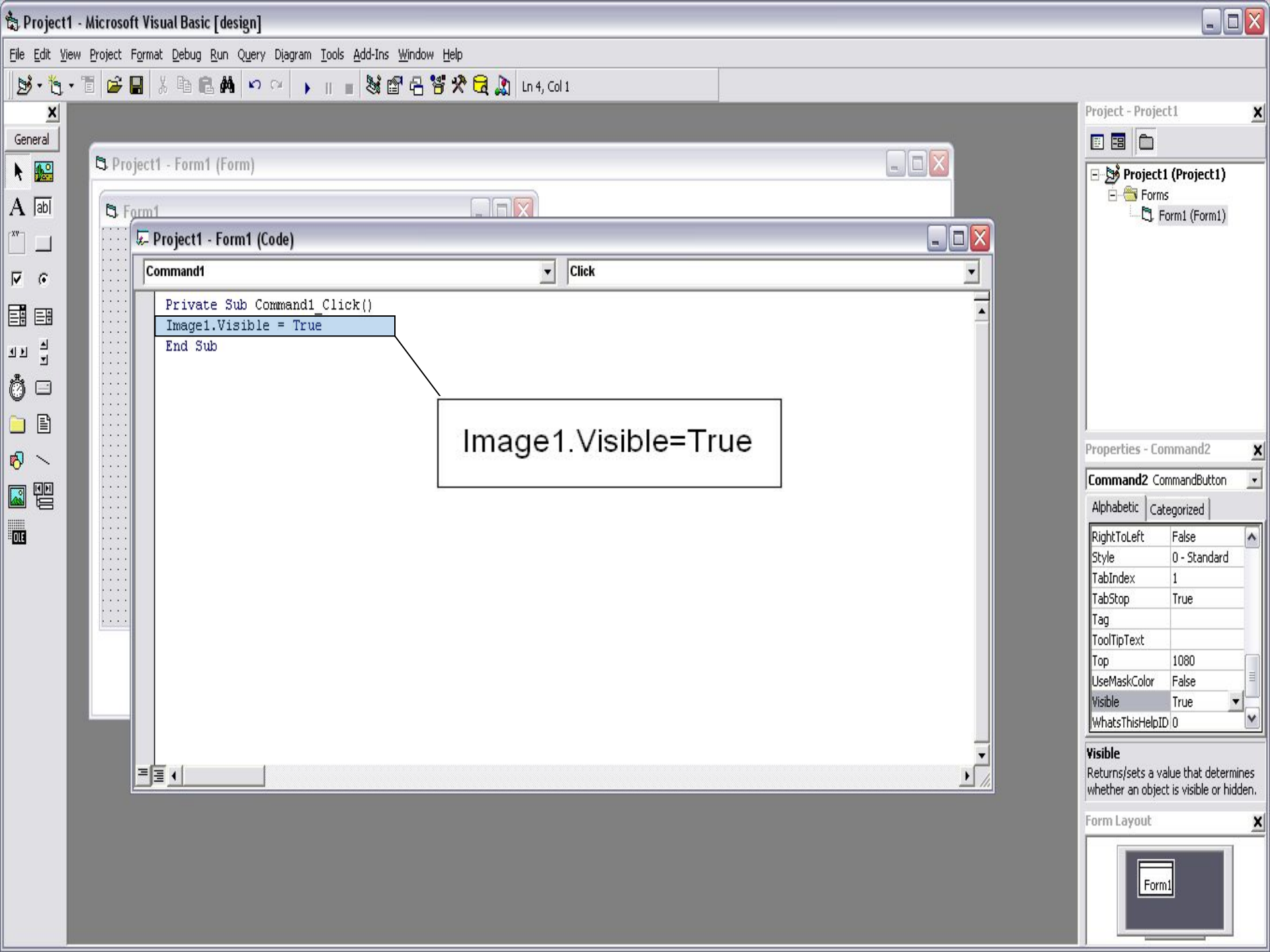
Alphabetic	Categorized
DisabledPicture	(None)
DownPicture	(None)
DragIcon	(None)
DragMode	0 - Manual
Enabled	True
Font	MS Sans Serif
Height	615
HelpContextID	0
Index	
Left	4680

Picture

Returns/sets a graphic to be displayed in a CommandButton, OptionButton or

Form Layout





General

Project1 - Form1 (Form)

Project1 - Form1 (Code)

Command1

Click

```
Private Sub Command1_Click()  
Image1.Visible = True  
End Sub
```

Image1.Visible=True

Project - Project1

Project1 (Project1)
Forms
Form1 (Form1)

Properties - Command2

Command2 CommandButton

Alphabetic Categorized

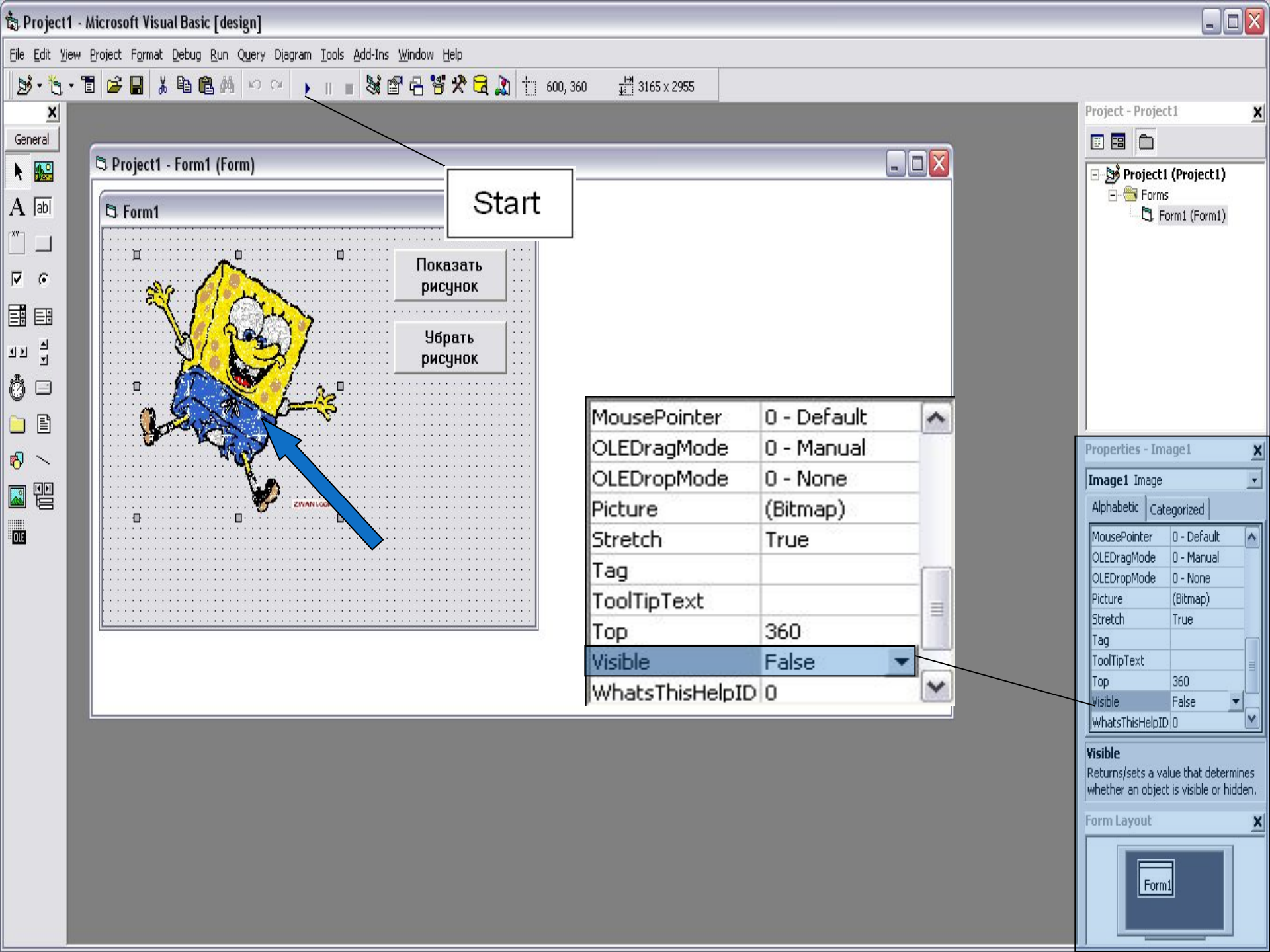
RightToLeft	False
Style	0 - Standard
TabIndex	1
TabStop	True
Tag	
ToolTipText	
Top	1080
UseMaskColor	False
Visible	True
WhatsThisHelpID	0

Visible

Returns/sets a value that determines whether an object is visible or hidden.

Form Layout





Start

Project1 - Form1 (Form)

Form1

Показать рисунок

Убрать рисунок

MousePointer	0 - Default
OLEDragMode	0 - Manual
OLEDropMode	0 - None
Picture	(Bitmap)
Stretch	True
Tag	
ToolTipText	
Top	360
Visible	False
WhatsThisHelpID	0

Project - Project1

- Project1 (Project1)
 - Forms
 - Form1 (Form1)

Properties - Image1

Image1 Image

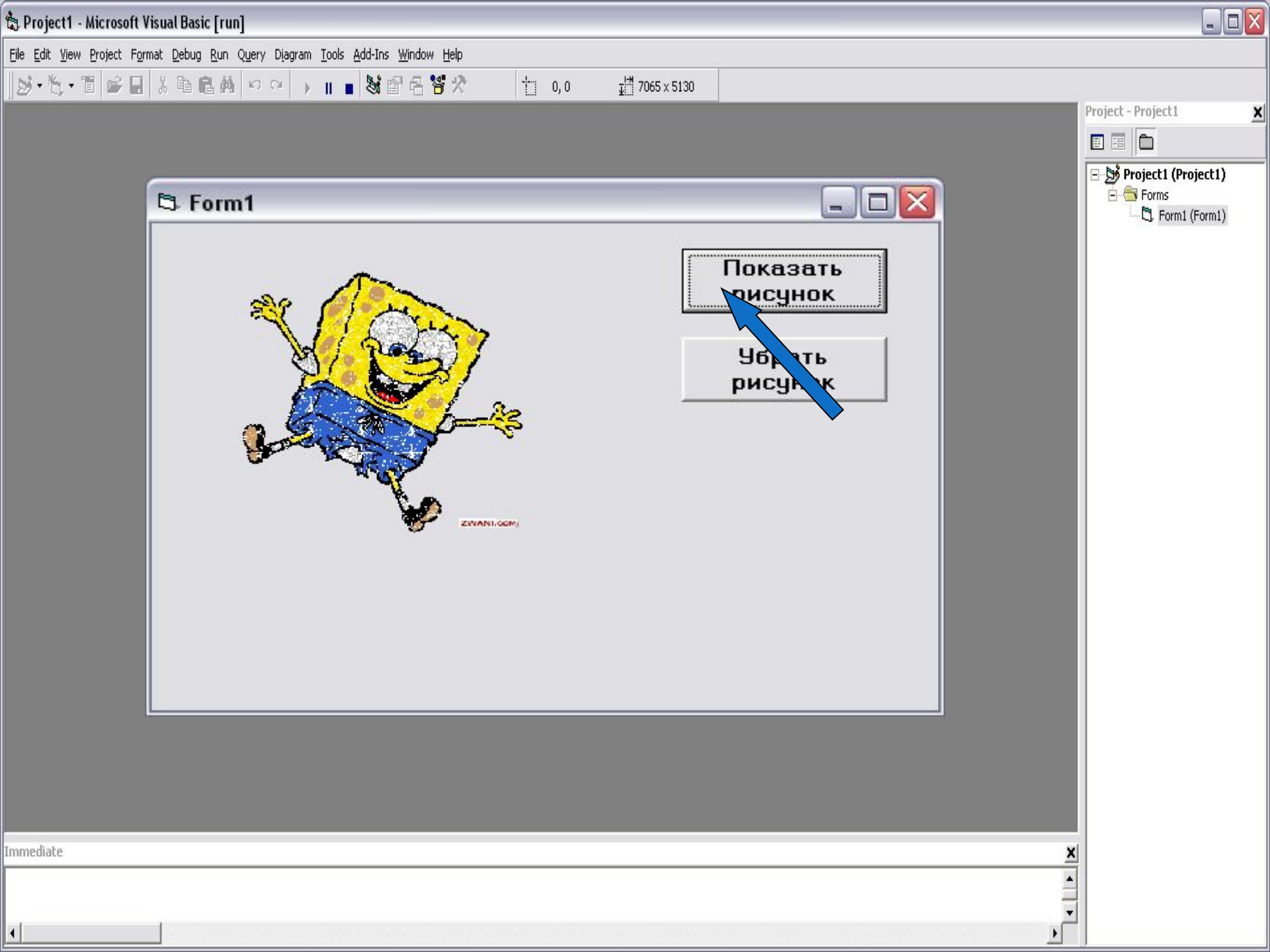
Alphabetic Categorized

MousePointer	0 - Default
OLEDragMode	0 - Manual
OLEDropMode	0 - None
Picture	(Bitmap)
Stretch	True
Tag	
ToolTipText	
Top	360
Visible	False
WhatsThisHelpID	0


Visible
Returns/sets a value that determines whether an object is visible or hidden.

Form Layout

Form1



Form1



Показать рисунок

Убрать рисунок

Project - Project1

- Project1 (Project1)
 - Forms
 - Form1 (Form1)

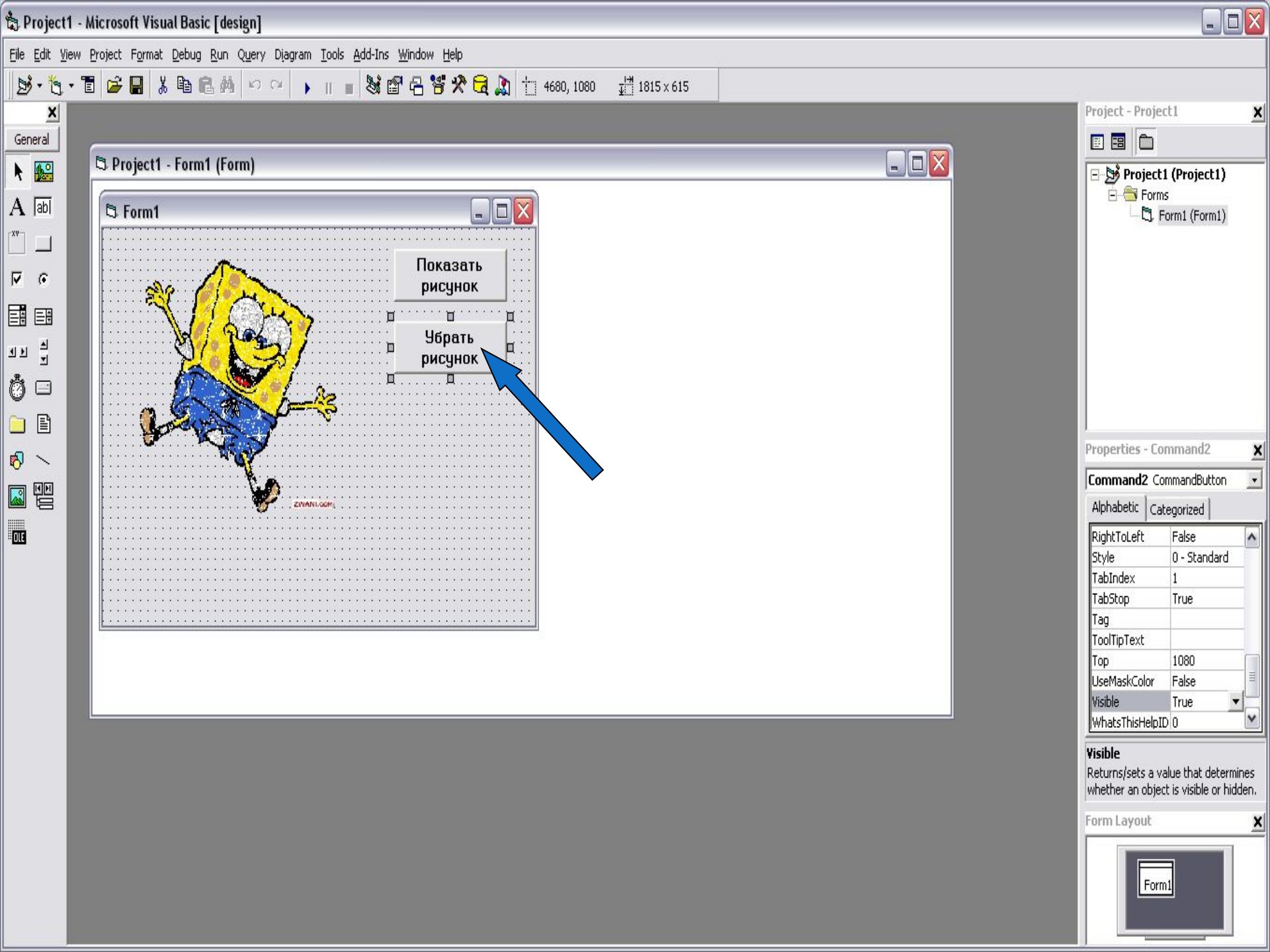
Immediate

▼

▲

▼

▲



General



Project1 - Form1 (Form)

Form1

Показать рисунок

Убрать рисунок

Project - Project1

Project1 (Project1)

- Forms
- Form1 (Form1)

Properties - Command2

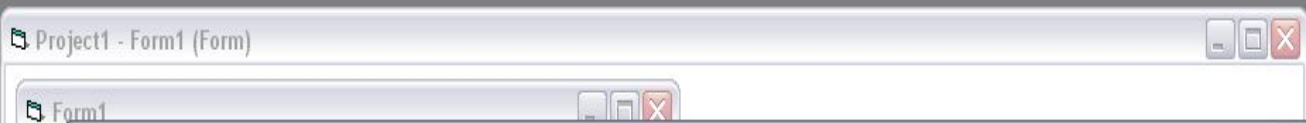
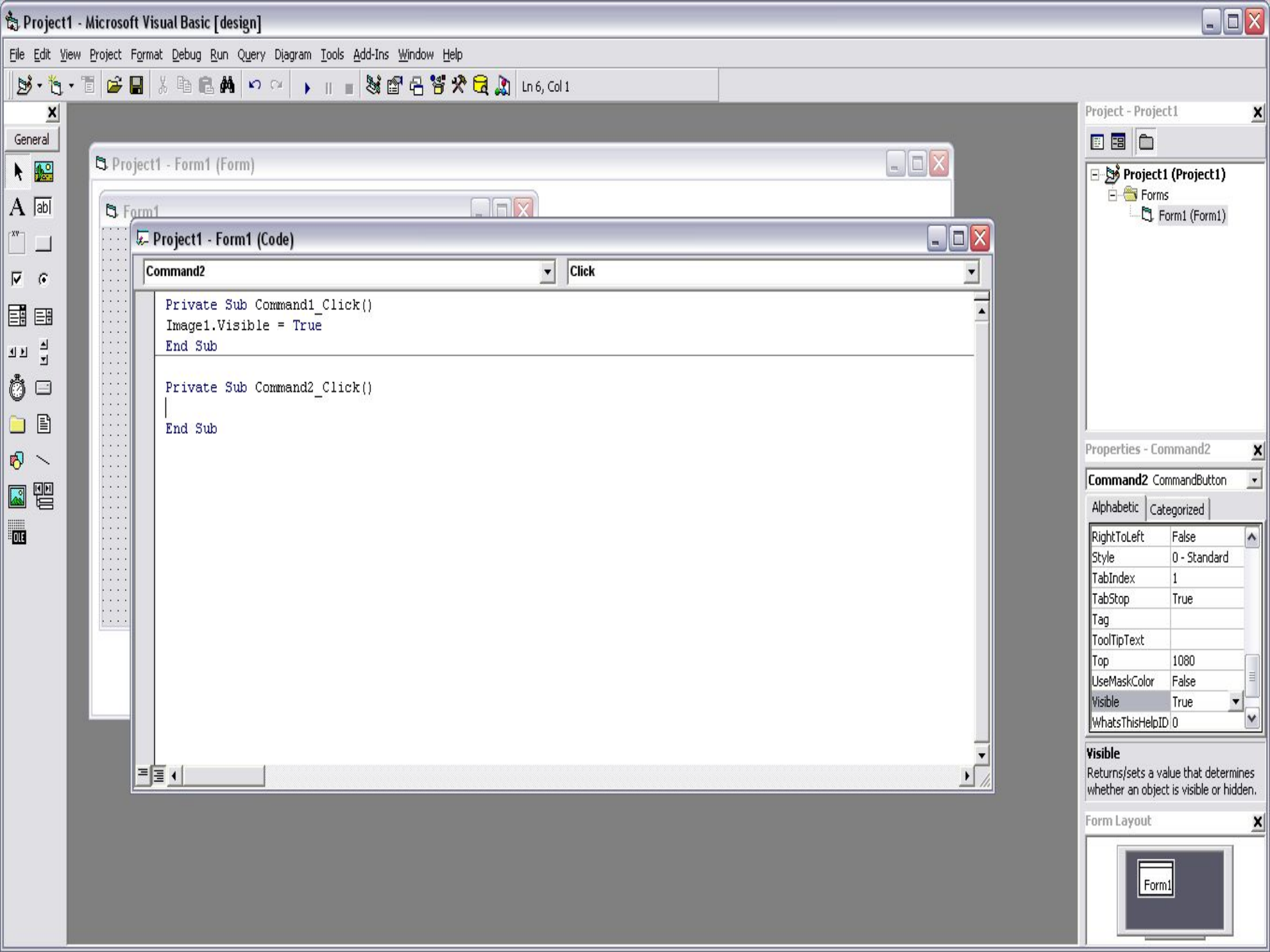
Command2 CommandButton

Alphabetic	Categorized
RightToLeft	False
Style	0 - Standard
TabIndex	1
TabStop	True
Tag	
ToolTipText	
Top	1080
UseMaskColor	False
Visible	True
WhatsThisHelpID	0

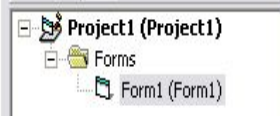
Visible
Returns/sets a value that determines whether an object is visible or hidden.

Form Layout





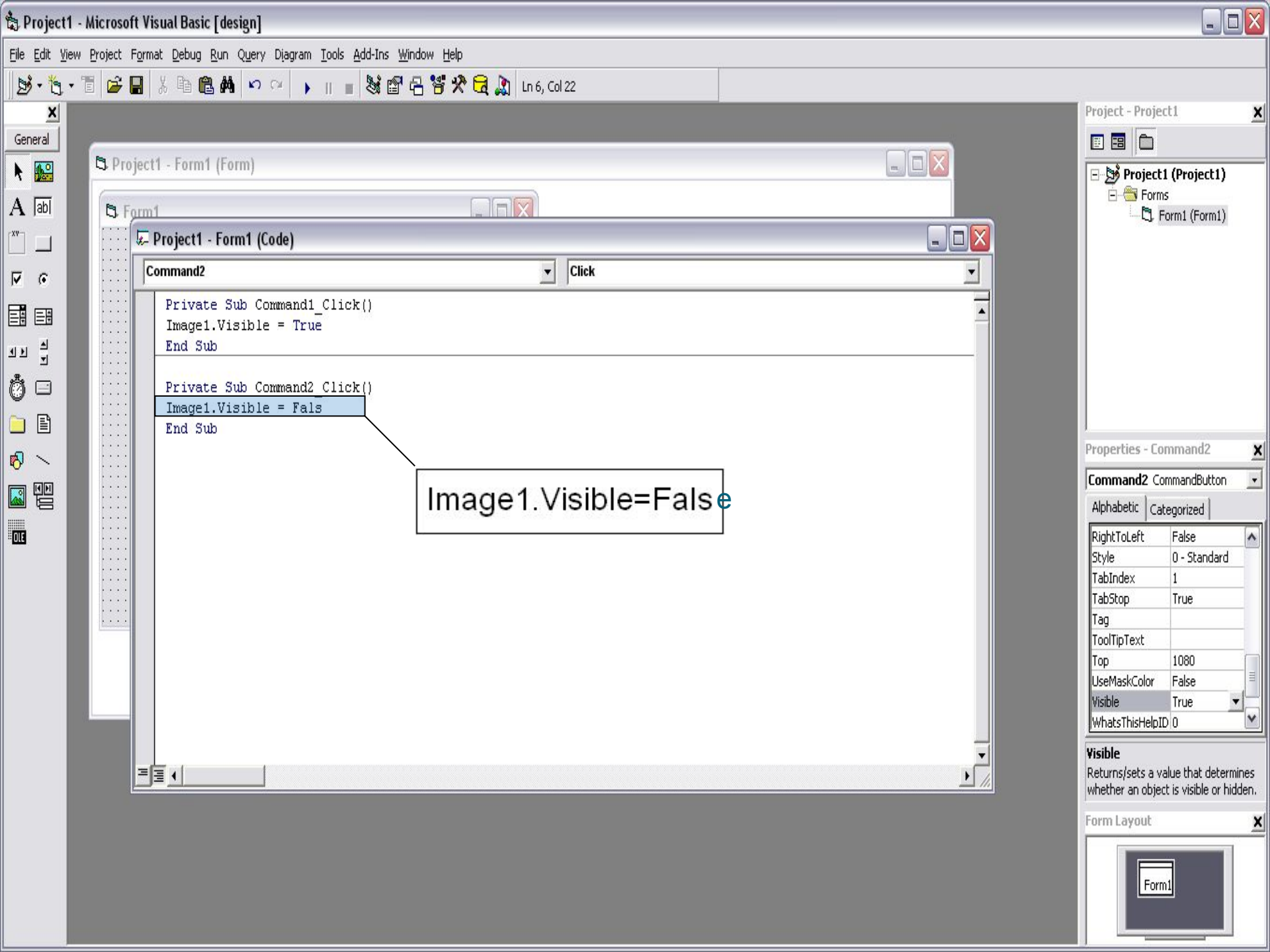
```
Project1 - Form1 (Code)  
Command2 Click  
Private Sub Command1_Click()  
    Image1.Visible = True  
End Sub  
  
Private Sub Command2_Click()  
End Sub
```



Properties - Command2	
Command2 CommandButton	
Alphabetic	Categorized
RightToLeft	False
Style	0 - Standard
TabIndex	1
TabStop	True
Tag	
ToolTipText	
Top	1080
UseMaskColor	False
Visible	True
WhatsThisHelpID	0

Visible
Returns/sets a value that determines whether an object is visible or hidden.





General

Project1 - Form1 (Form)

Project1 - Form1 (Code)

Command2 Click

```
Private Sub Command1_Click()  
Image1.Visible = True  
End Sub  
  
Private Sub Command2_Click()  
Image1.Visible = False  
End Sub
```

Image1.Visible=False

Project - Project1

Project1 (Project1)
Forms
Form1 (Form1)

Properties - Command2

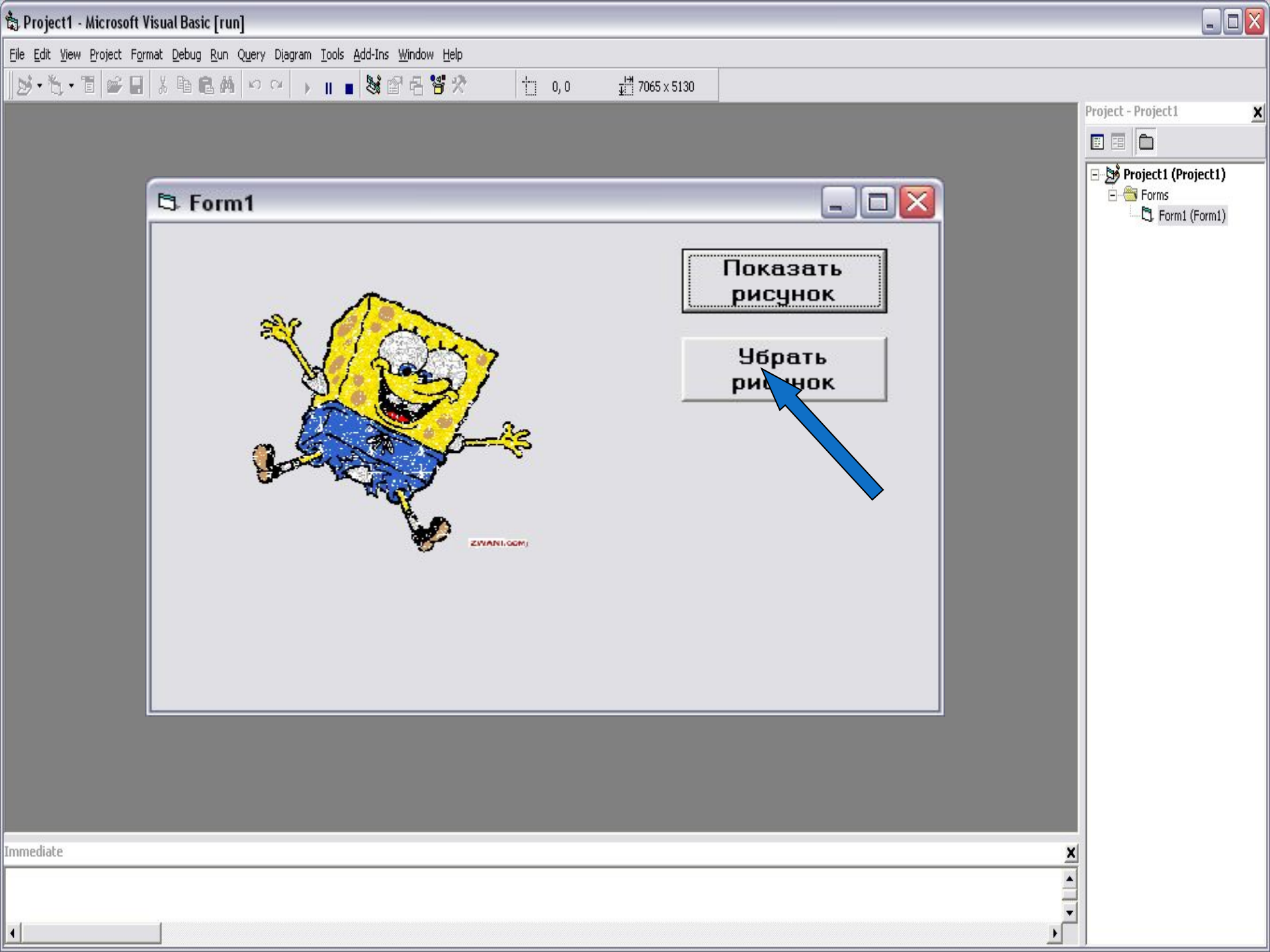
Command2 CommandButton

Alphabetic	Categorized
RightToLeft	False
Style	0 - Standard
TabIndex	1
TabStop	True
Tag	
ToolTipText	
Top	1080
UseMaskColor	False
Visible	True
WhatsThisHelpID	0

Visible
Returns/sets a value that determines whether an object is visible or hidden.

Form Layout





Form1



Показать рисунок

Убрать рисунок

Project - Project1

- Project1 (Project1)
 - Forms
 - Form1 (Form1)

Immediate

Сам процесс разработки
закljučается не в написании
программы(программного
кода), а в проектировании
приложения.

