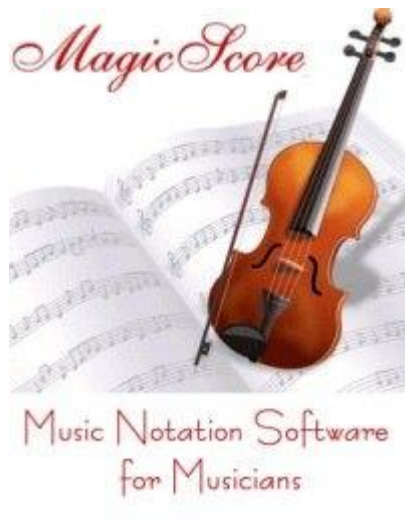


# Нотные редакторы

# Примеры нотных редакторов





finale.®

# finale

PRINTMUSIC®

## Learning Center

QuickStart Videos

User Manual

Tutorial Guide

## Tip of the Day

Using a foreign language keyboard to type in a different language? PrintMusic supports Unicode fonts, allowing you to enter foreign language characters directly into your score with the Text, Lyrics or Expression tools.



## Create New Music

SETUP WIZARD

DEFAULT DOCUMENT

TEMPLATES

SCANNING

## Open Existing Music

OPEN

Open Recent Files

IMPORT MUSICXML

**Document Setup Wizard - Select an Ensemble and Document Style** [X]

Select an Ensemble:

- Create New Ensemble
- SATB+Piano
- Brass Quintet
- Jazz Band
- Woodwind Quintet
- String Quartet
- Orchestra (String)
- Small Concert Band
- Brass Trio
- Brass Choir
- Woodwind Trio
- Woodwind Choir

Select a Document Syle:

- Engraved Style
- Handwritten Style
- Arrangement Style
- Choral Style
- European Style

Finale PrintMusic 2014 Engraved Style (Maestro Font)

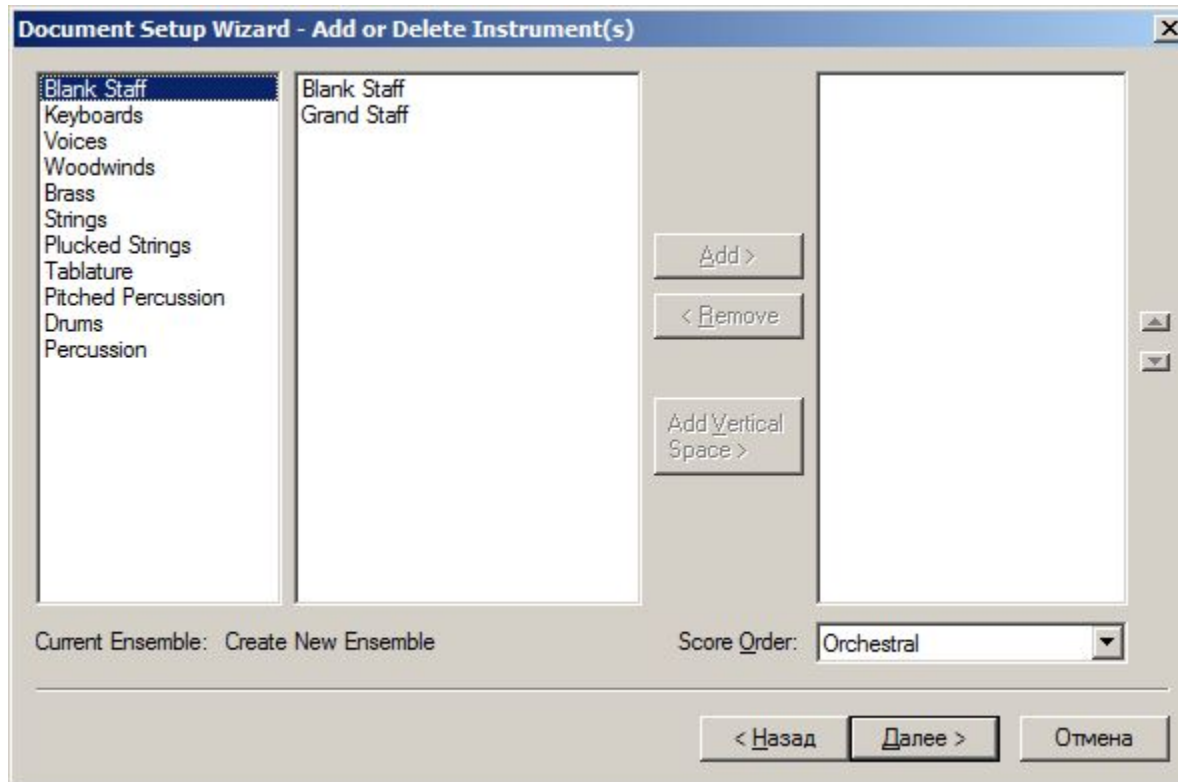
Choose this style for PrintMusic's default settings with Title, Composer, and Copyright text inserts.

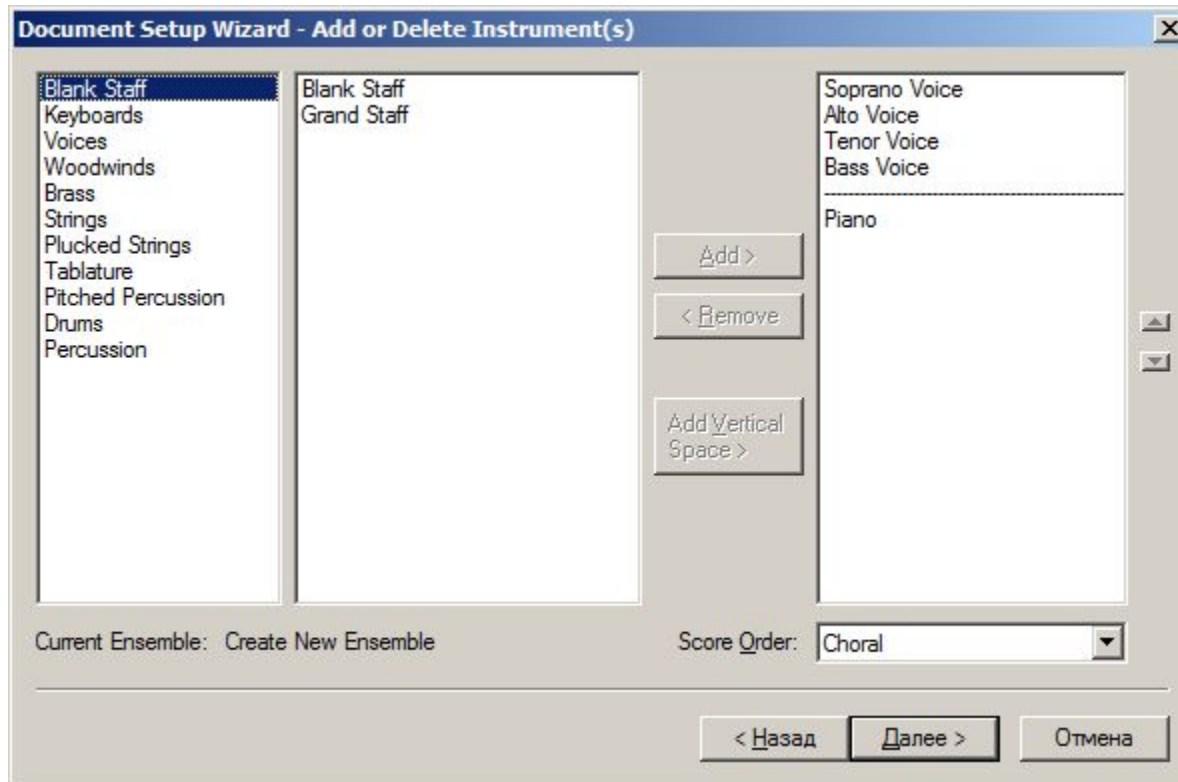
Always Use This Document Style with the Selected Ensemble

Score Page Size: Letter (8,5 x 11) [v]

Portrait  Landscape

< Назад **Д**алее > Отмена





**Document Setup Wizard - Score Information** [X]

Title:

Subtitle:

Composer:

Arranger:

Lyricist:

Copyright: ©

< Назад    Далее >    Отмена



**Document Setup Wizard - Score Settings** [X]

Select a Time Signature


Select a Concert Key Signature

C Major

Major Key ▾

Specify Initial Tempo Marking

Text:

Tempo: =

Specify Pickup Measure


Number of Measures:

< Назад    Готово    Отмена

Finale 2012 - [Chopin Etude in Eb Min.mus]

File Edit Utilities View Document MIDI/Audio Plug-ins Tools Window Help

Repeat: 1 Time: 00:00:00.000 = 58

# Etude in E $\flat$ Minor

Op. 10, No. 6 Frédéric Chopin (1810–1849)

*Andante*

*p*

*legatto*

4

7

Page: 1

Go to Vertical: 0

**Tuplet Definition** ✕

Eighth(s) ▾

in the space of

Eighth(s) ▾

Display

Number

Bracket