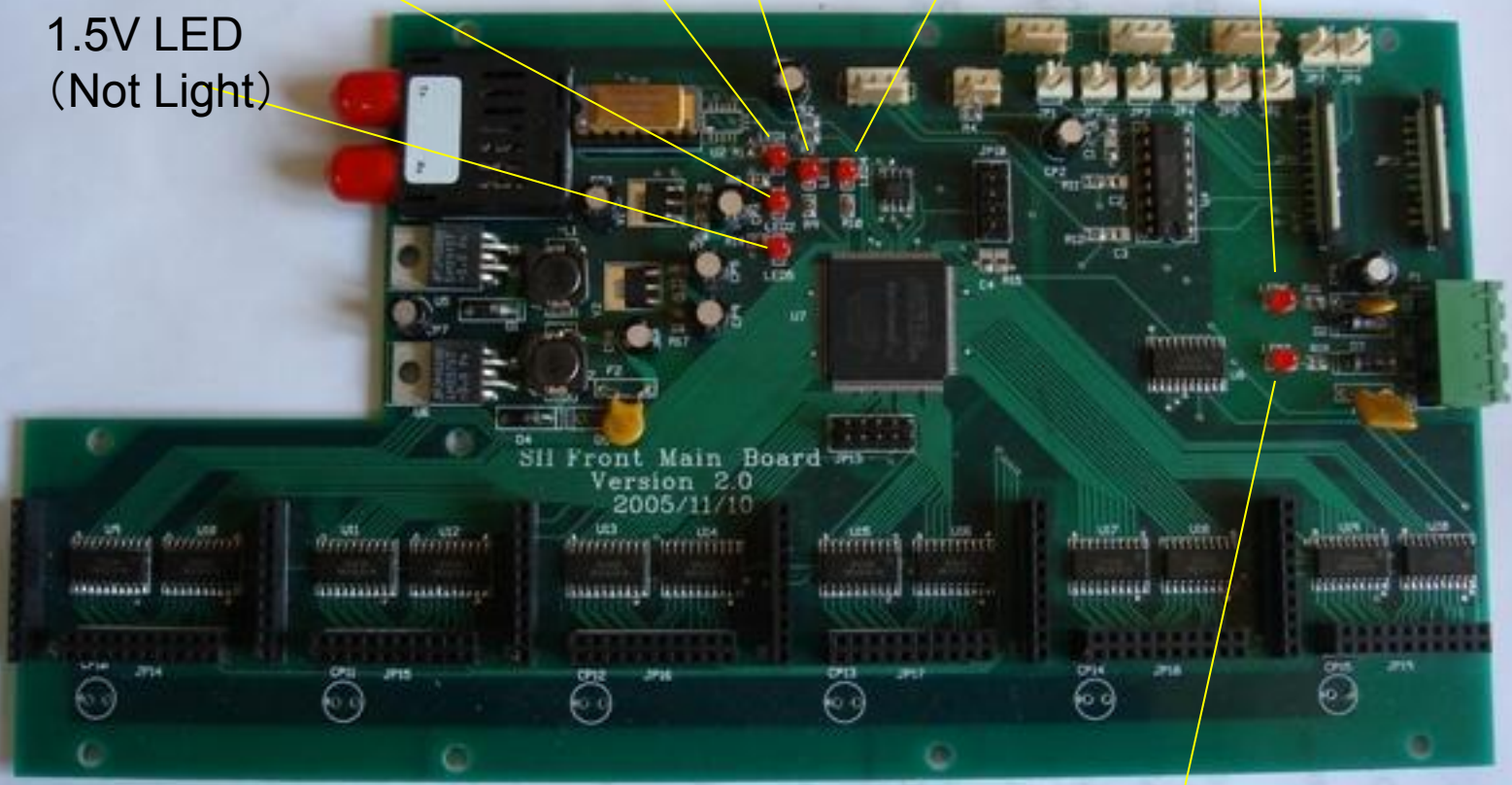


3.3V LED
5V LED
Normal Operation LED (Flashing)
Normal Operation LED (Not Light)
12V LED

1.5V LED
(Not Light)

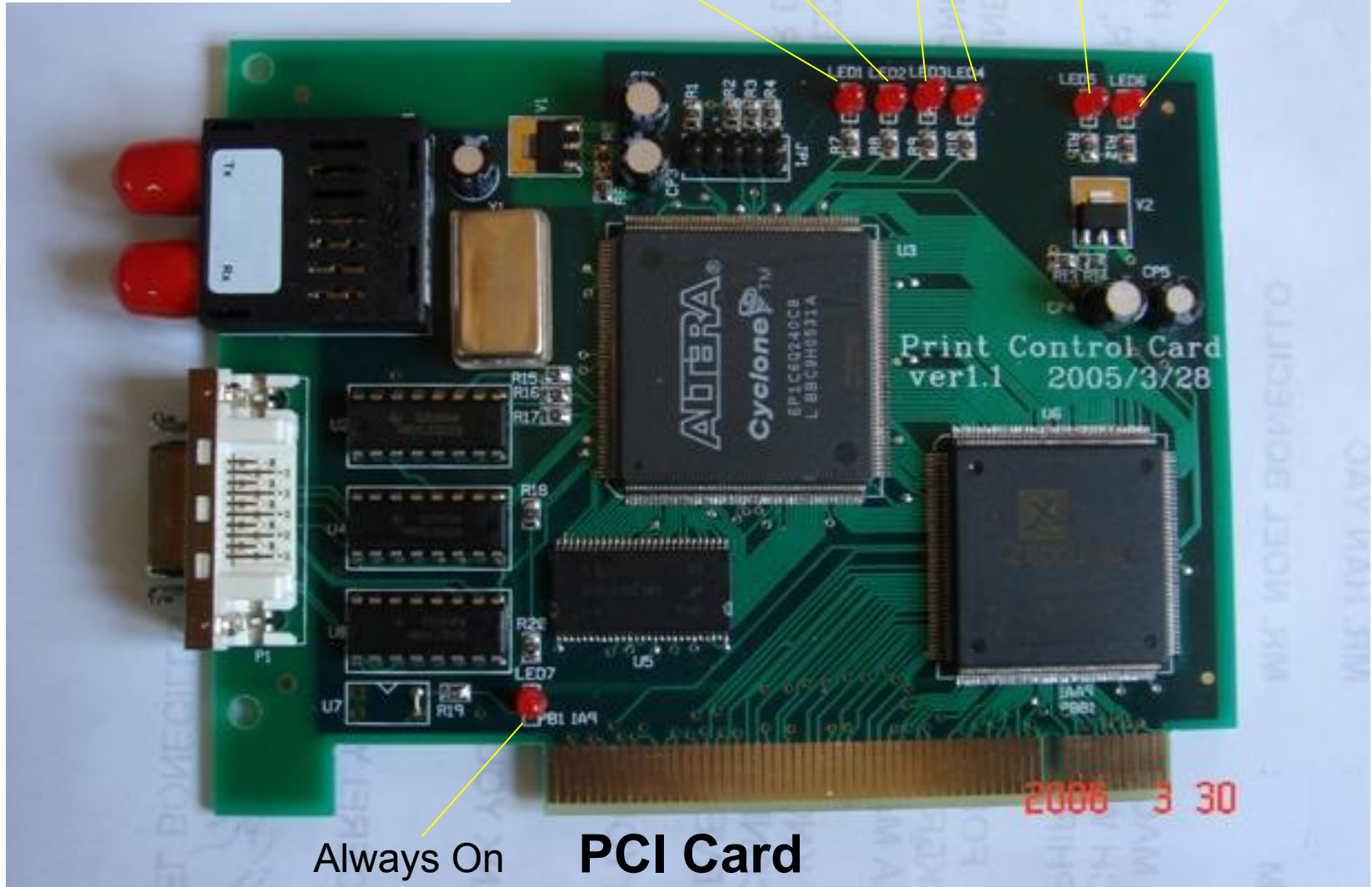


28V LED 30

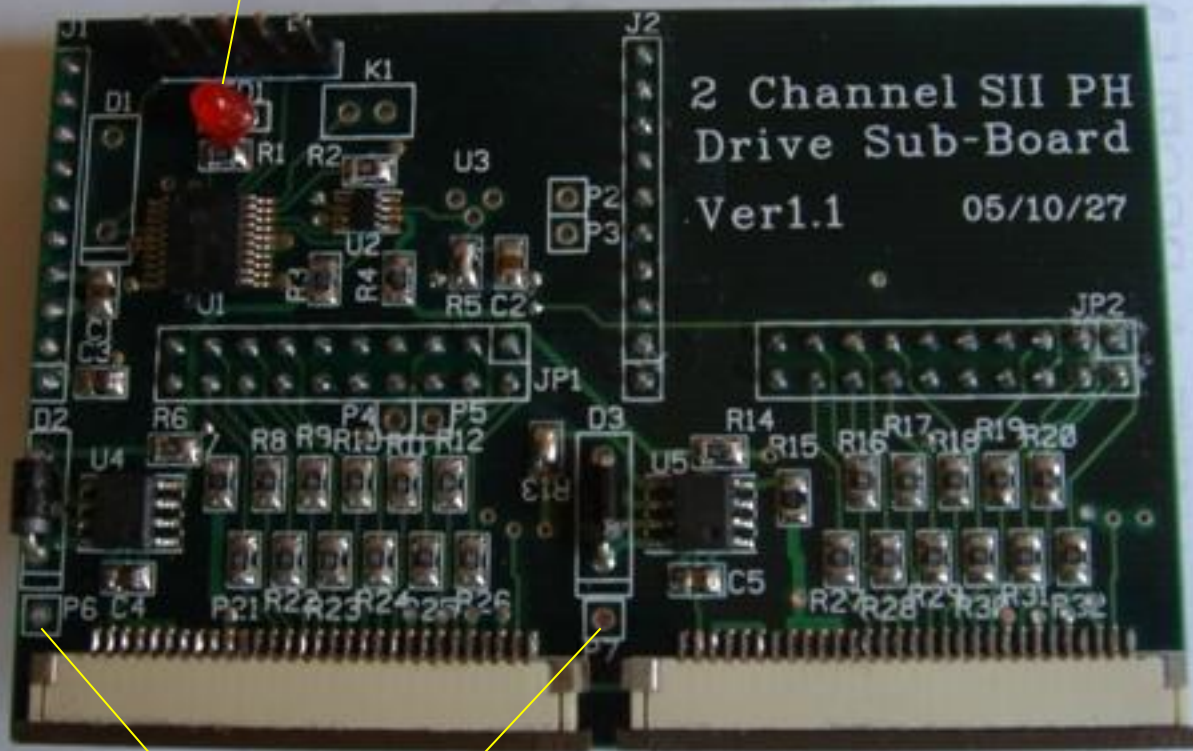
Printhead Board

P.S.: When X and Y motor is working, corresponding LED will be on

X Motor Working LED
Y Motor Working LED
Operation LED (Always On)
3.3V LED
5V LED



Operation LED



Printhead Card

Printhead Voltage Checking Point

2006 3 30

12V LED

24V LED

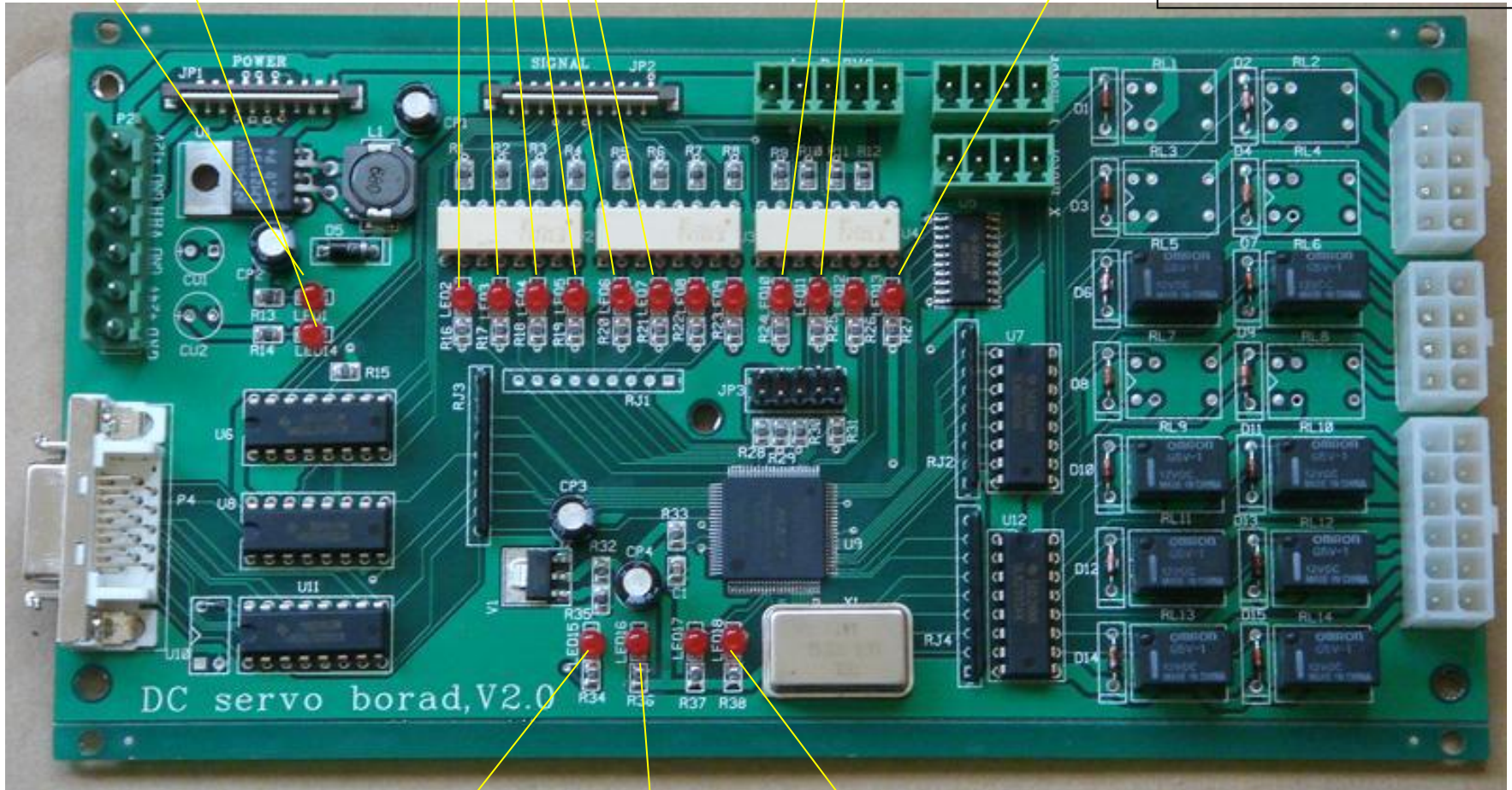
6 Color Ink
Supply LED
(On when pumping)

Servo Board

Left and Right
Limit Switch
Indication LED

Emergency
Stop LED

P.S. : Left and Right
Limit Switch and
Emergency Stop LED
Will On When They
Are Pressed



5V LED

3.3V LED

Operation LED
(Flashing)