

# Site Graphics

Graphical Alarm Management System

 **COOPER** Safety  
Fire Systems

## ***Cooper Site Graphics***

- Graphical aid to manage alarm activations
- Programmable to suit any application
  - Hospitals, universities, hotels, etc
- Simple, clear and user friendly
- Efficient management of critical systems
  - Fire Alarm
  - Emergency Lighting
- Allows Low-Skilled operation
  - PC based control
  - Improved record logging
  - Audit Trail
  - Multiple Users: 2000 max
  - Dongle protected



## *Cooper Site Graphics*

- Secure System
- Multiple Users and Multiple PC Workstations
- Image, Plan or Text Displays
- Simple Navigation & Control
- Current Event List and In-Depth Historical Analysis
- Windows XP, 2000 Compatible
- Choice of Specification



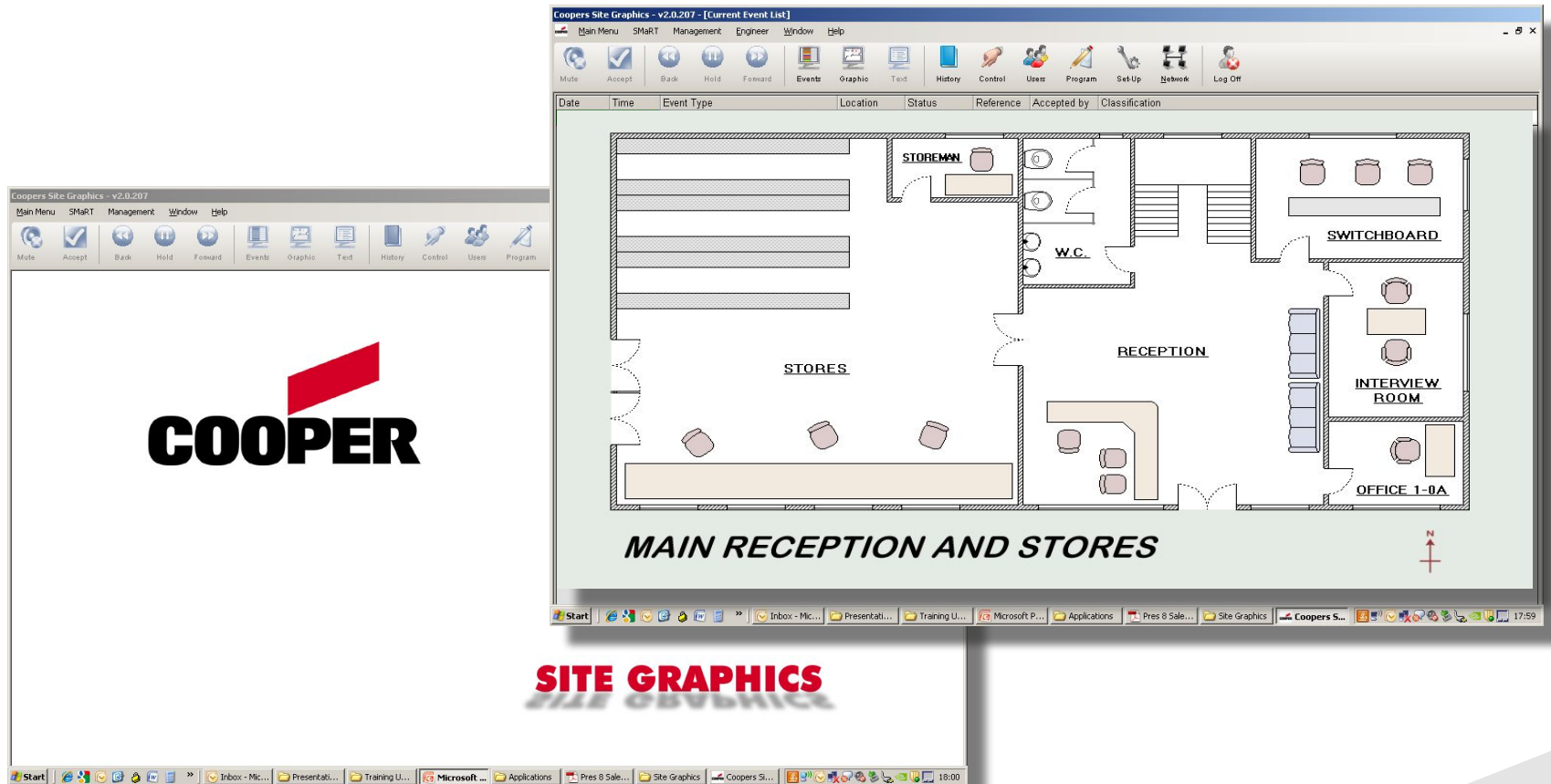
## *System Application*

- Large industrial or commercial sites
- Critical safety requirements
- Multiple building projects



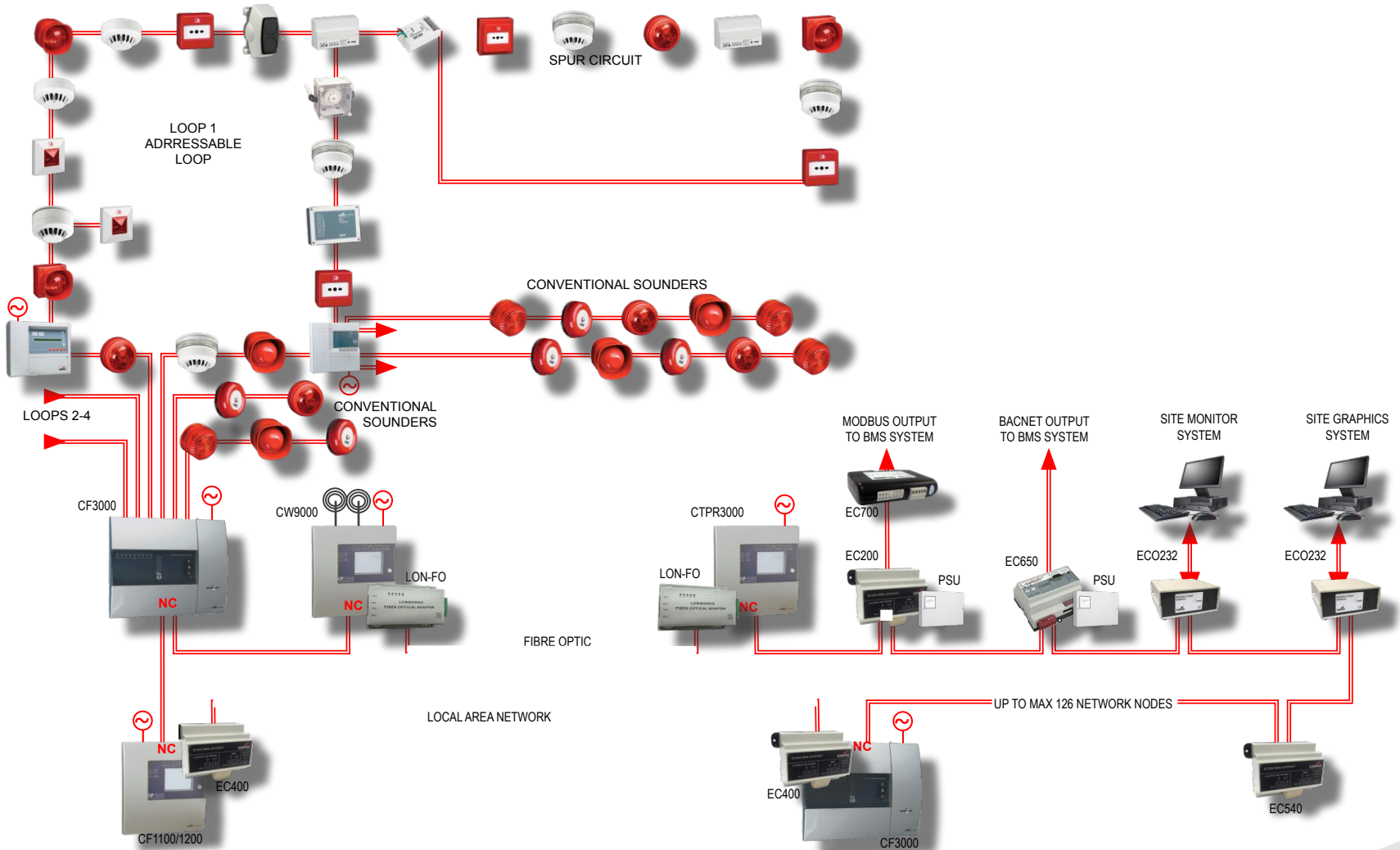
## System Application

- Efficient facilities management
- Alarm & Fault conditions



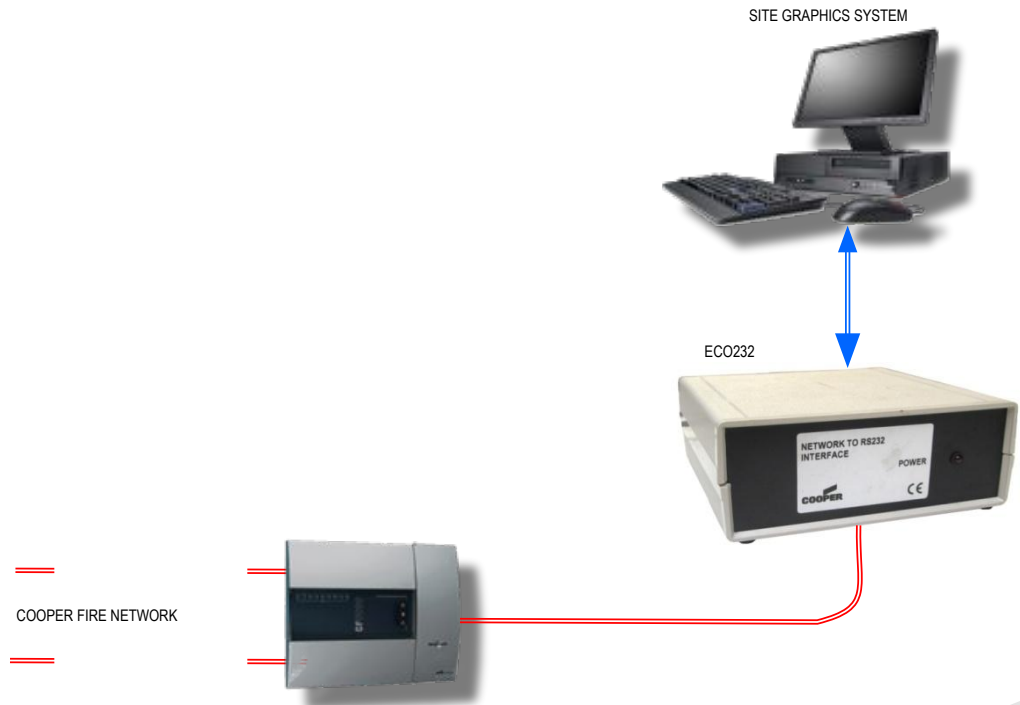
**SITE GRAPHICS**

## System Schematic



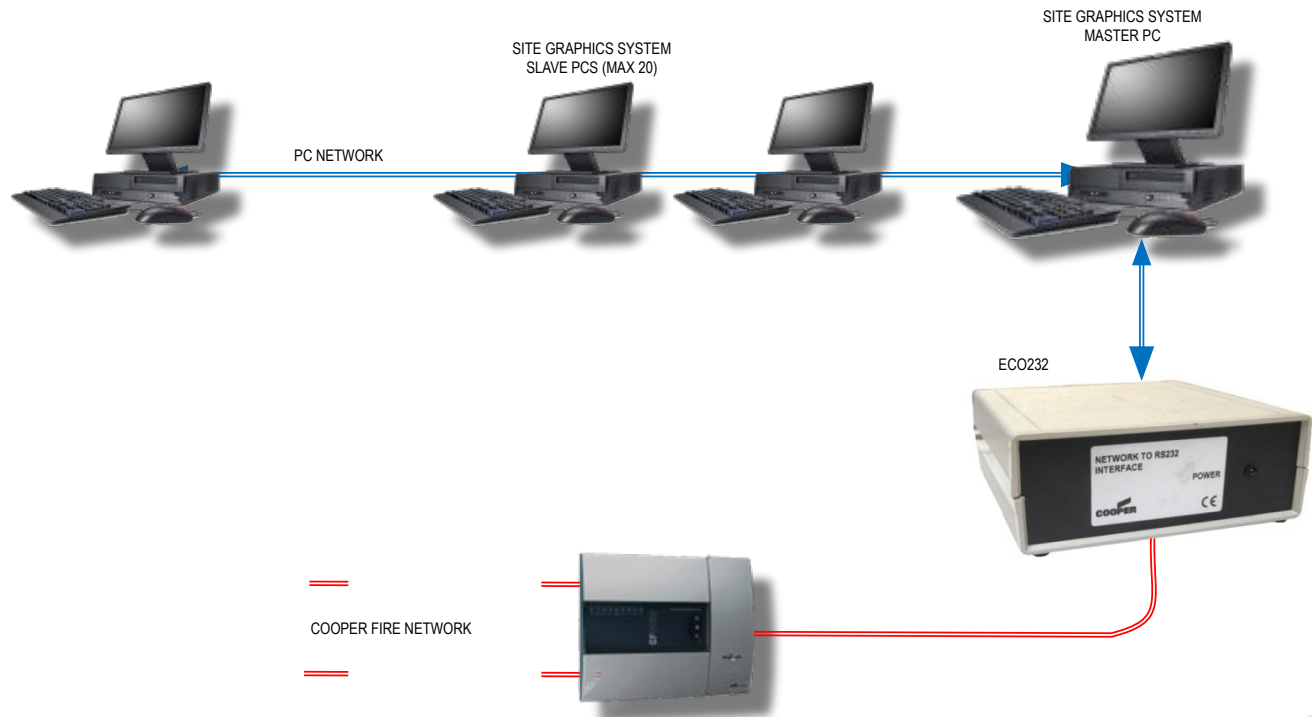
## *System Schematic*

- Single PC to Cooper Fire network



## System Schematic

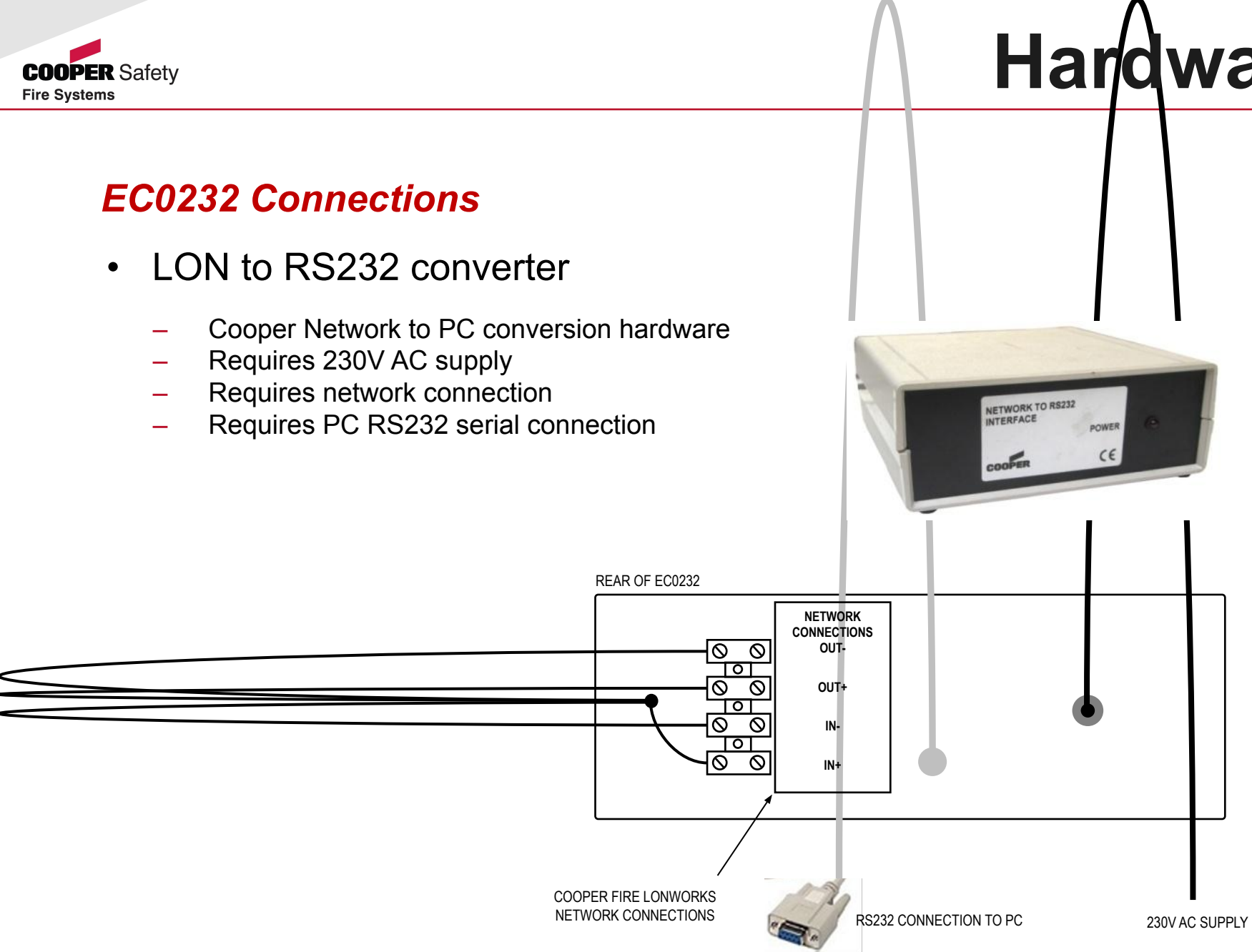
- Multiple PC to Cooper Fire network
  - 1 Master PC
  - 20 Slave PCs max





## *EC0232 Connections*

- LON to RS232 converter
  - Cooper Network to PC conversion hardware
  - Requires 230V AC supply
  - Requires network connection
  - Requires PC RS232 serial connection



## *Requirements*

- Coded Dongle
  - Serial Number, Client ID, any additional options
  - Supplied with each software package
  - Not required to install and run software
  - Will not communicate with Panels without dongle
  - Dongle plugs into the PC parallel port
  - USB dongle is available on request



## *Minimum PC Spec*

- Intel Pentium 2GHz or equivalent
  - Windows 2000 SP4
  - Windows XP Professional SP2
- Memory
  - 512Mb min memory
  - 20Gb min disk space
- Graphics
  - 1024 x 768 XGA graphics card
  - 16 million Colours
- Connectivity
  - 1 – 6 serial ports depending on configuration
  - Parallel or USB for Coded Dongle
  - 10-100 Mps LAN connection for multiple work stations
- Misc
  - Windows compatible sound card
  - 2 button mouse and keyboard



## Functionality

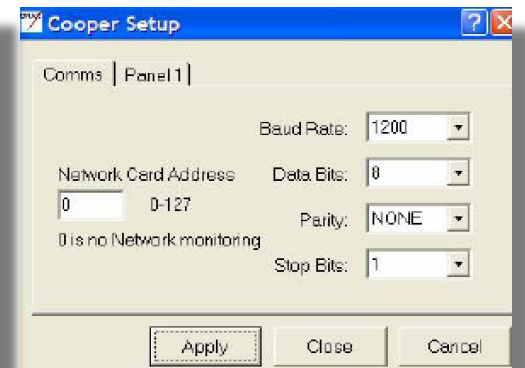
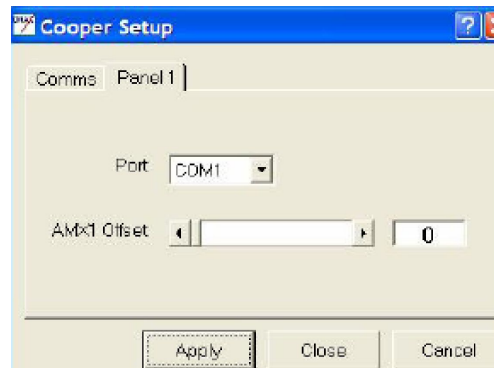
- Device Events
  - Device text transmitted by control panel
  - Trigger device alarm or fault to collect data
  - Data: 2-1-56/0 = *Panel Address – Loop No. – Device Address / Input Type*
  - Input types: 0 = Fire, 1 = Pre Alarm, 4 = Disablement, 6 = Fire Test, 8 = Fault
- Panel Events
  - Global Reset, Silence, Evacuate
  - Power Fault, Battery Fault, Charger Fault
  - Sounder Fault, Earth Fault, FPE and FRE Faults
- Disablement
  - Zone
  - Device

```
.....  
10101000110001111011000001100  
11111110011100110011001010000  
01011000010010011100011001010  
00011101101010101110110110000  
01100000010100101000110001001  
00110011000001000000010000111  
00011101000010110100000100111  
0100111001011011001010100010  
00110100010110000100000010100  
10010011010101101001110110111  
01000010110101001100011101001  
00011010001101001011000000100  
00101010110111010101011000100  
00110001100011110101001010110
```

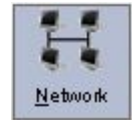
## *Network Manager*

- Parameters

- Baud Rate: 4800
- Parity: None
- Stop Bits: 1
- Network Mon: 0
- Comm Port: As required
- Panel x - Offset: 0



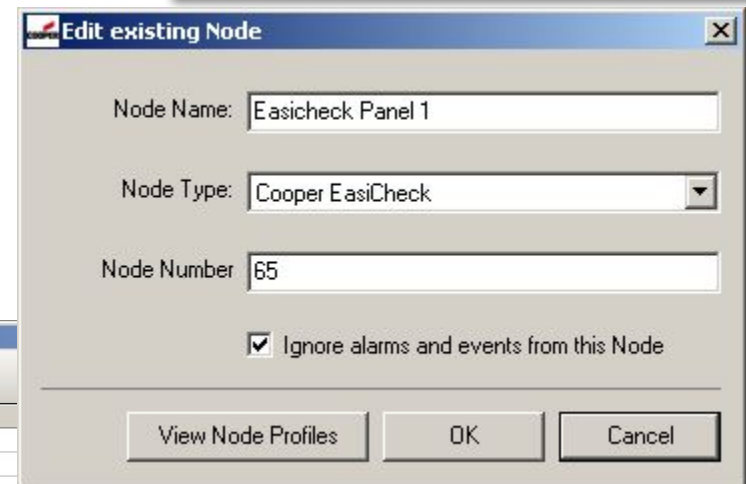
## Network



- Network Manager Test Box
  - Engineer / Network Manager / Show Test Box
  - Count increases if active
  - Recheck settings if not
  - Network Poll

*Every 30 seconds*

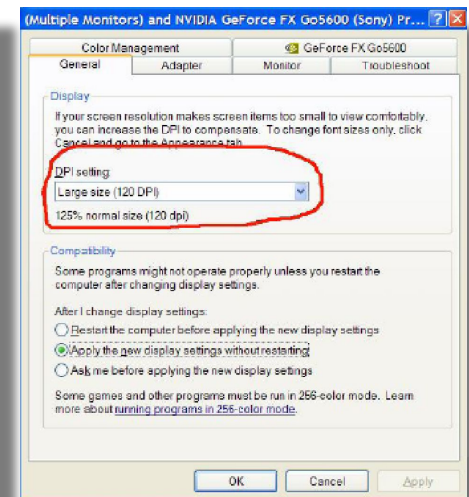
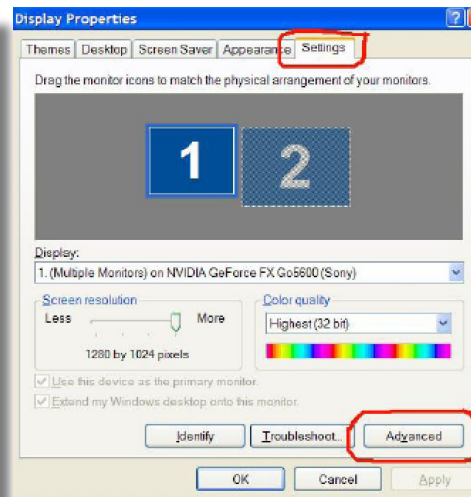
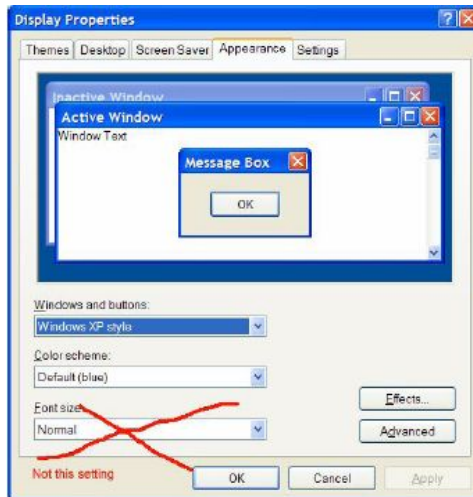
*Generates Communications Error message*



Node	Connection	Node Description	Node Type	Ignore	Mode
1	Test Node 1	Panel 1	Menvier DF6000	OK	Normal
2	Test Node 2	Panel 2	Menvier DF6000	OK	Normal
3	Test Node 3	Panel 3	Menvier DF6000	OK	Normal
4	Test Node 4	Panel 4	Menvier DF6000	OK	Normal
5	Test Node 5	Panel 5	Menvier DF6000	OK	Normal
6	Test Node 6	Panel 6	Menvier DF6000	IGNORE	Normal
7	Test Node 7	Panel 7	Menvier DF6000	IGNORE	Normal
8	Test Node 8	Panel 8	Menvier DF6000	IGNORE	Normal
9	Test Node 9	Panel 9	Menvier DF6000	IGNORE	Normal
10	Test Node 10	Panel 10	Menvier DF6000	IGNORE	Normal
65	Test Node 65	Easicheck Panel 1	Cooper EasiCheck	IGNORE	Normal

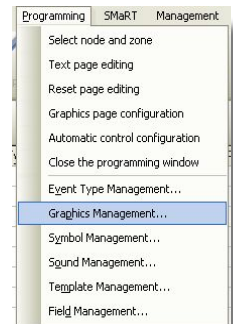
## Getting Started

- PC Graphics
  - 1024 x 768 Large Font
  - Display Properties / Settings / Advanced / DPI Settings / restart
  - WinXP: Display Properties (**NOT** Appearance / Font Size)
  - Logos and graphics may not display correctly with other font sizes
- Administrator Login required
  - Install Site Graphics software
  - InsertDongle
- Open Software, log-in (3112), configure Network Manager



## Graphics

- Format
  - BMP preferred,
  - GIF, JPG, WMG also acceptable
  - 1004 x 556 pixel
- Preparation
  - Export from AutoCAD
  - Screenshot conversion through photo packages
- Import
  - Programming / Graphics Management / Import Picture File



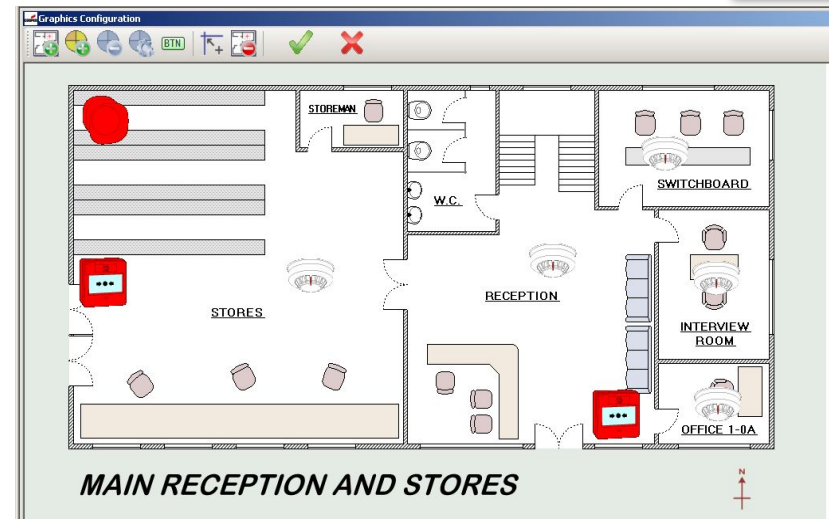
Number	Description	Usage
1	NEW: PICT 100.bmp	78
2	NEW: PICT 101.bmp	0
3	NEW: PICT 102.bmp	0

Import Picture File    Configure Symbols    Delete    Close



## Setup of Input States

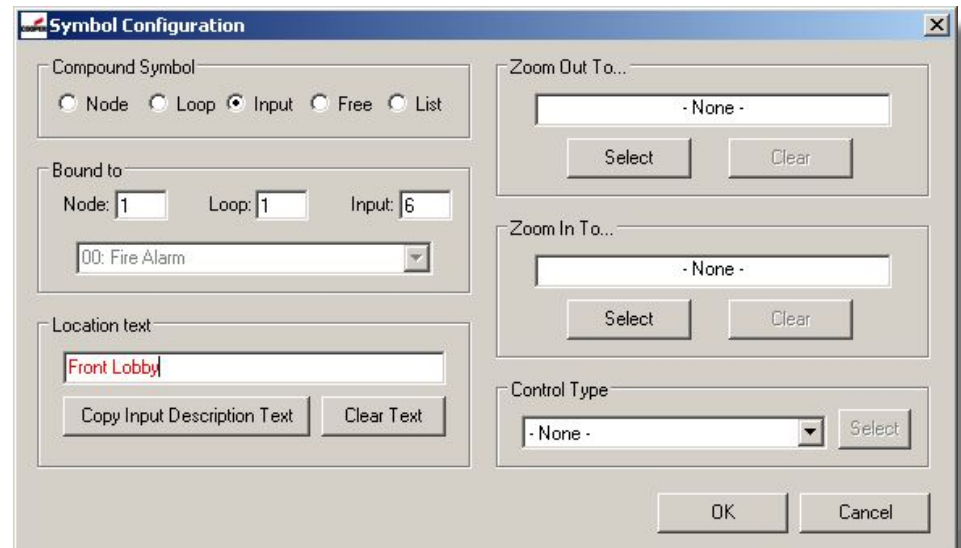
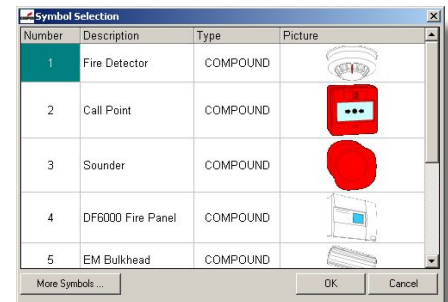
- Program Inputs
  - Event types
  - Input alarm pages template
  - Reset Page template
  - Assign graphics to inputs
  - Allocate symbols
- Dialogue Box
  - Test Maps
- Control Buttons
  - Zoom, Controls, etc



Node: 1 - Fire Alarm : Loop 1					
IP	Event Type	Location/description	Programmed	Status	Last Edited
1	FIRE ALARM	-		Enabled	Sep 12 14:01:03 2011
2	FIRE ALARM	-		Enabled	Sep 12 14:03:48 2011
3	FIRE ALARM	-		Enabled	Sep 12 14:04:22 2011
4	FIRE ALARM	-		Enabled	Sep 12 14:06:44 2011
5	FIRE ALARM	-		Enabled	Sep 12 14:07:07 2011
6	FIRE ALARM	-		Enabled	Sep 12 14:07:14 2011
7	FIRE ALARM	-		Enabled	Sep 12 14:07:56 2011
8	FIRE ALARM	-		Enabled	Sep 12 14:08:03 2011
9	FIRE ALARM	-		Enabled	Sep 12 14:11:21 2011
10	FIRE ALARM	-		Enabled	Sep 12 14:07:27 2011
11	-	-		Enabled	

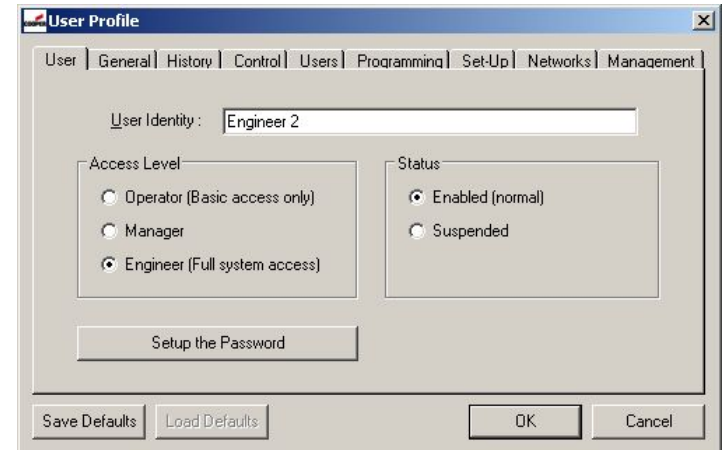
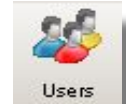
## Symbols

- Simple Symbols
  - 2 pictures for ON and OFF state of device
- Compound Symbols
  - 17 pictures for multiple states of device, ie Fault, Pre alarm, etc,



## Operator Access

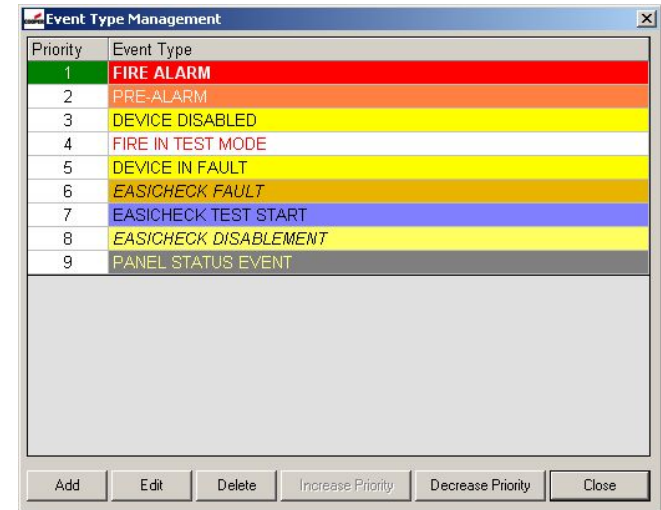
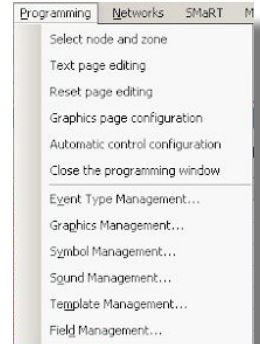
- 2000 users max
  - Unique pass-code
- Profile
  - Definition of access rights



Number	User Identity	Access Level	Status	Created	Last On System
1	System Configuration Password	Engineer	Suspended ❌	Aug 23 12:02:35 2002	
2	Cooper Default Password	Engineer	Enabled ✅	Oct 16 17:04:36 2006	Sep 12 14:18:30 2011
3	Engineer 2	Engineer	Enabled ✅	Sep 12 11:21:47 2011	Sep 12 11:21:56 2011

## Event Types

- Priority
- Handling
  - Initial Display of alarm
  - Text and Colour
  - Sounds
    - *single or repeat*
    - *Mute on ACCEPT*
    - *WAV format*



Date	Time	Event Type	Location	Status	Reference	Accepted by
08/09/11	15:49:18	*** NON-PROGRAMMED EVENT ***	Dongle Error	WAITING	0-0-129/0	-

## History

- Event Log
  - Event History
  - Control History
  - Isolation History
  - System History
  - Service History
  - User History
- Search Tool
- Print Facility

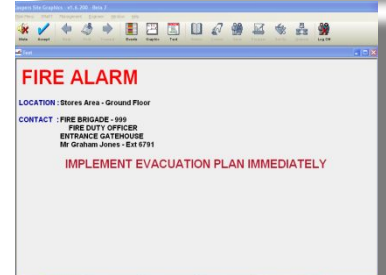
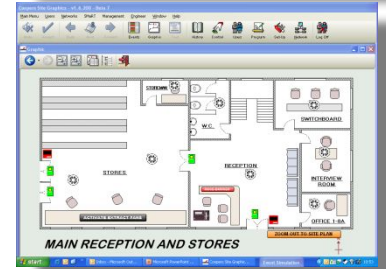
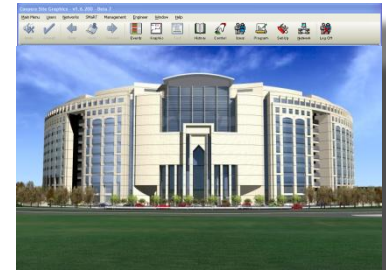


The screenshot shows the 'Coopers Site Graphics - v1.6.200 - Beta 7' application window. The 'Event/Alarm History' window is open, displaying a table of 8 events. The table has columns for Time, Event/Alarm Type, Location, Reference, Classification, and Serial No. The events include 'FIRE ALARM' and 'DEVICE ISOLATED'.

Time	Event/Alarm Type	Location	Reference	Classification	Serial No.
10:33:14	FIRE ALARM	Stores Area - Ground Floor	1-1-1/0		MTE-0000001
10:33:59	FIRE ALARM RESET	Stores Area - Ground Floor	1-1-1/0		MTE-0000002
10:55:15	FIRE ALARM	Stores Area - Ground Floor	1-1-1/0		MTE-0000003
10:59:10	FIRE ALARM RESET	Stores Area - Ground Floor	1-1-1/0		MTE-0000004
10:59:22	DEVICE ISOLATED	Ground Floor Office 1-QA	1-1-5/4		MTE-0000005
11:07:14	DEVICE ISOLATED	Ground Floor Office 1-QA	1-1-5/4		MTE-0000006
11:10:49	DEVICE ISOLATED	Ground Floor Office 1-QA	1-1-5/4		MTE-0000007
11:16:39	DEVICE ISOLATED	Ground Floor Office 1-QA	1-1-5/4		MTE-0000008

## Sample Screens

- Site Image
- Site Plan
- Floor Plan
- Text Screens
- Combined Screens



ZOOM



Main Menu Users Networks SMaRT Management Engineer Window Help

Mute Accept Back Hold Forward Events Graphic Text History Control Users Program Set-Up Network Log Off

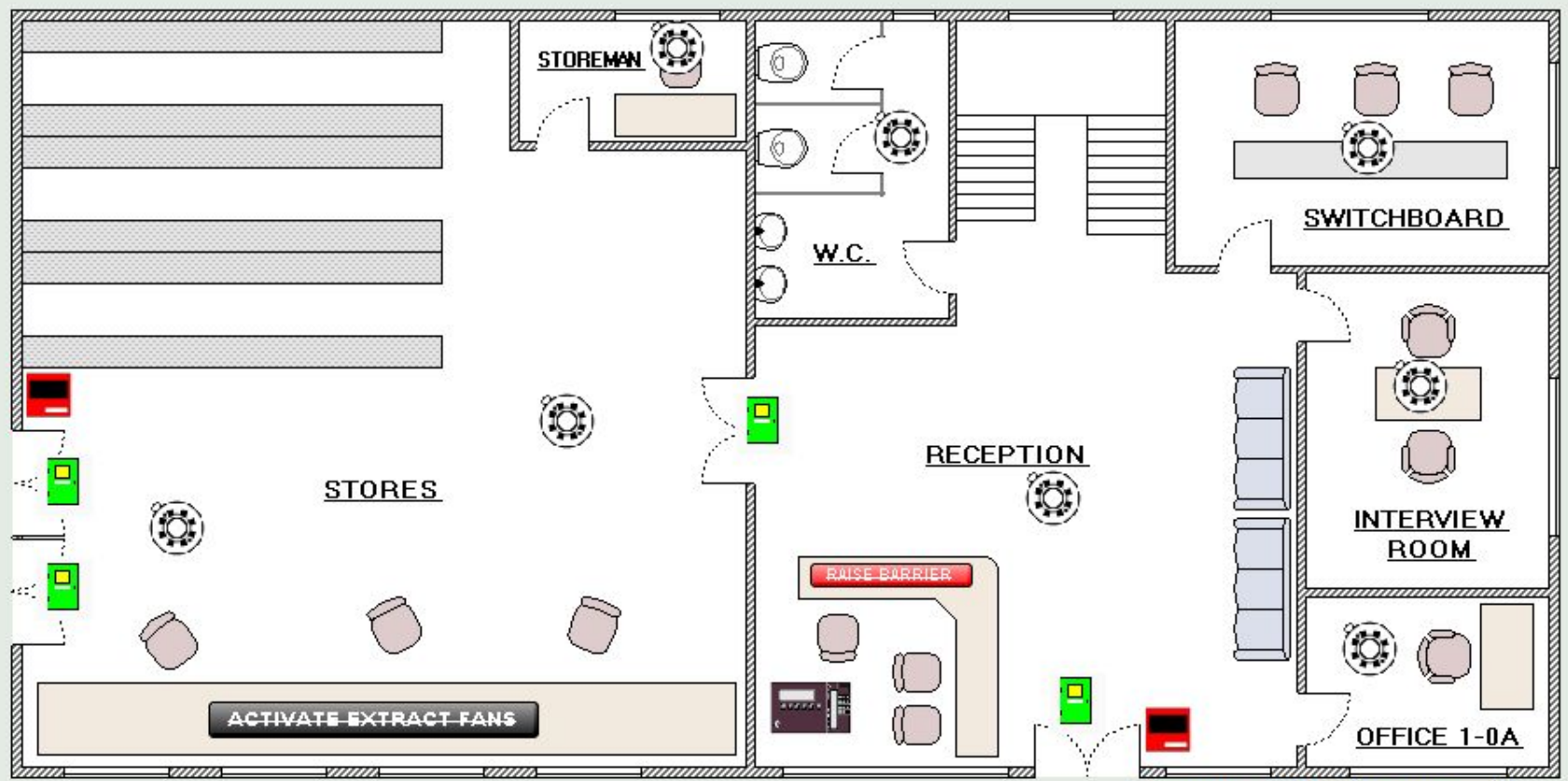


Mute Accept Back Hold Forward Events Graphic Text History Control Users Program Set-Up Network Log Off

Navigation icons: back, forward, zoom in, zoom out, list, and other controls.







ZOOM-OUT TO SITE PLAN

# MAIN RECEPTION AND STORES



# **FIRE ALARM**

**LOCATION : Stores Area - Ground Floor**

**CONTACT : FIRE BRIGADE - 999**  
**FIRE DUTY OFFICER**  
**ENTRANCE GATEHOUSE**  
**Mr Graham Jones - Ext 6791**

## **IMPLEMENT EVACUATION PLAN IMMEDIATELY**



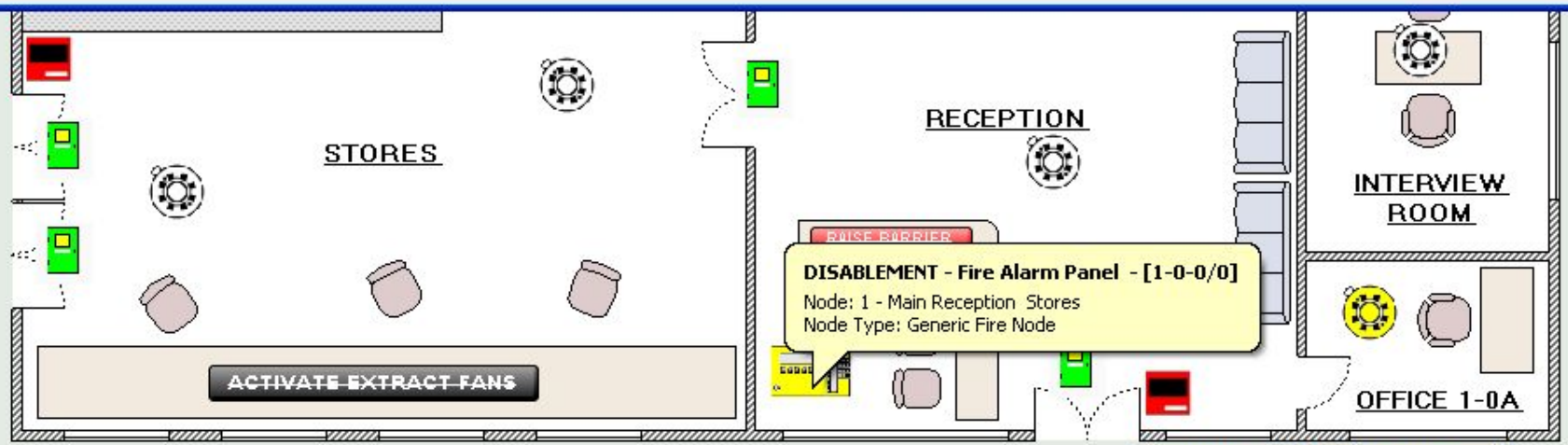
Text [Window Control Buttons]

# DEVICE ISOLATED

**LOCATION :** Ground Floor Office 1-0A

**DEVICE :** 1-1-5/4

**THIS DETECTION DEVICE HAS BEEN DISABLED AND CAN NO LONGER SIGNAL A FIRE CONDITION**



ACTIVATE EXTRACT FANS

ZOOM-OUT TO SITE PLAN

## MAIN RECEPTION AND STORES

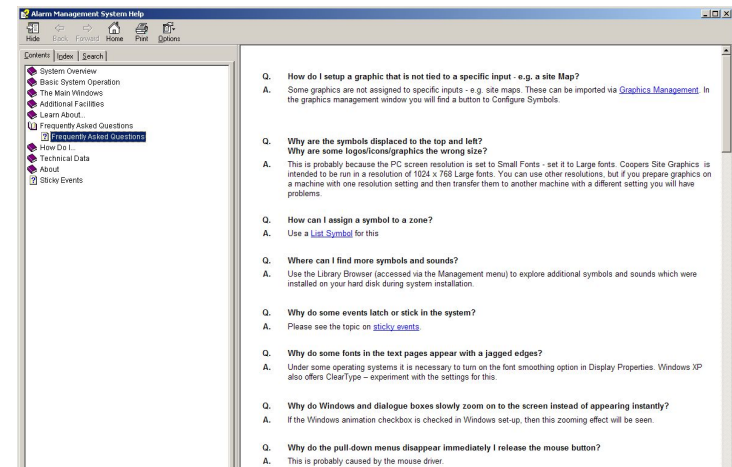
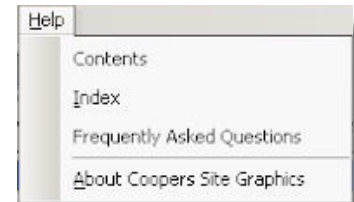
## *Setup Steps*

- Start Communications
- Prepare Maps and import
- Assign Graphics
- Add Symbols
- Use Dialogue Box to test maps
- Add Control Buttons for Zoom In/Out or Controls if required for multiple input states - e.g. detector fire, fault, disable, etc



## Fault Finding

- No Communication
  - Check Network Text Box for comms
  - Configure Network Manager
  - Insert Dongle
  - Configure Panel for 'Panel X of Y'
- Event Graphics will not display in alarm
  - Check Event Priority
- Functions Missing
  - Enter the relevant programming screen first
  - Log on with engineer code
- Misc
  - Check graphics are 1004 x 556 pixels
  - Ensure your PC has Admin rights
  - Use the comprehensive Help files



Thank you!