

Vehicle

- Korando
- Chairman
- Chairman W
- Rexton(NEW)
- Rexton II
- Rodius
- Kyron**
- Actyon
- Actyon(SUT)

Entire Reprogram

- ISB-2011001 KYRON D145 DSI6 Speed A/T TCU
- ISB-2007002 KYRON D120 D20DT(C3I) ECU
- ISB-2008000 KYRON D100 D20DT(C3I) ECU
- ISB-2007002 KYRON D120 D27DT(C3I) ECU
- ISB-2008000 KYRON D100 D20DT(C3I) ECU
- ISB-2008000 KYRON D100 D20DT(C2I) ECU
- ISB-2006032 KYRON D100 D20DT(C2I) ECU
- ISB-2005027 KYRON D100 D20DT(C2I) ECU
- ISB-2006006 KYRON D100 D20DT(C2I) ECU
- ISB-2006009 KYRON D100 D27DT(C2I) ECU
- ISB-2006027 KYRON D100 D20DT(C2I) ECU
- ISB-2006012 KYRON D100 D20DT(C2I) ECU



Reprogram Information

1. Vehicle : KYRON
2. Information : Shift quality improvement
3. Date distributed :
4. ECU PartNumber : 36600 09000
5. S/W Version : 002.006.004.000.000

ECU Information

H/W Version : 00/00
S/W Version: 08/25/01
ECU PartNumber :

Process 0%

Search  **Start** 

Before reprogramming

Vehicle

- Korando
- Chairman
- Chairman W
- Rexton(NEW)
- Rexton II
- Rodius
- Kyron**
- Actyon
- Actyon(SUT)

Entire Reprogram


- ISB-2011001 KYRON D145 DSI6 Speed A/T TCU
- ISB-2007002 KYRON D120 D20DT(C3I) ECU
- ISB-2008000 KYRON D100 D20DT(C3I) ECU
- ISB-2007002 KYRON D120 D27DT(C3I) ECU
- ISB-2008000 KYRON D100 D20DT(C3I) ECU
- ISB-2008000 KYRON D100 D20DT(C2I) ECU
- ISB-2006032 KYRON D100 D20DT(C2I) ECU
- ISB-2005027 KYRON D100 D20DT(C2I) ECU
- ISB-2006006 KYRON D100 D20DT(C2I) ECU
- ISB-2006009 KYRON D100 D27DT(C2I) ECU
- ISB-2006027 KYRON D100 D20DT(C2I) ECU
- ISB-2006012 KYRON D100 D20DT(C2I) ECU


Reprogram Information

1. Vehicle : KYRON
2. Information : Shift quality improvement
3. Date distributed :
4. ECU PartNumber : 36600 09000
5. S/W Version : 002.006.004.000.000

ECU Information

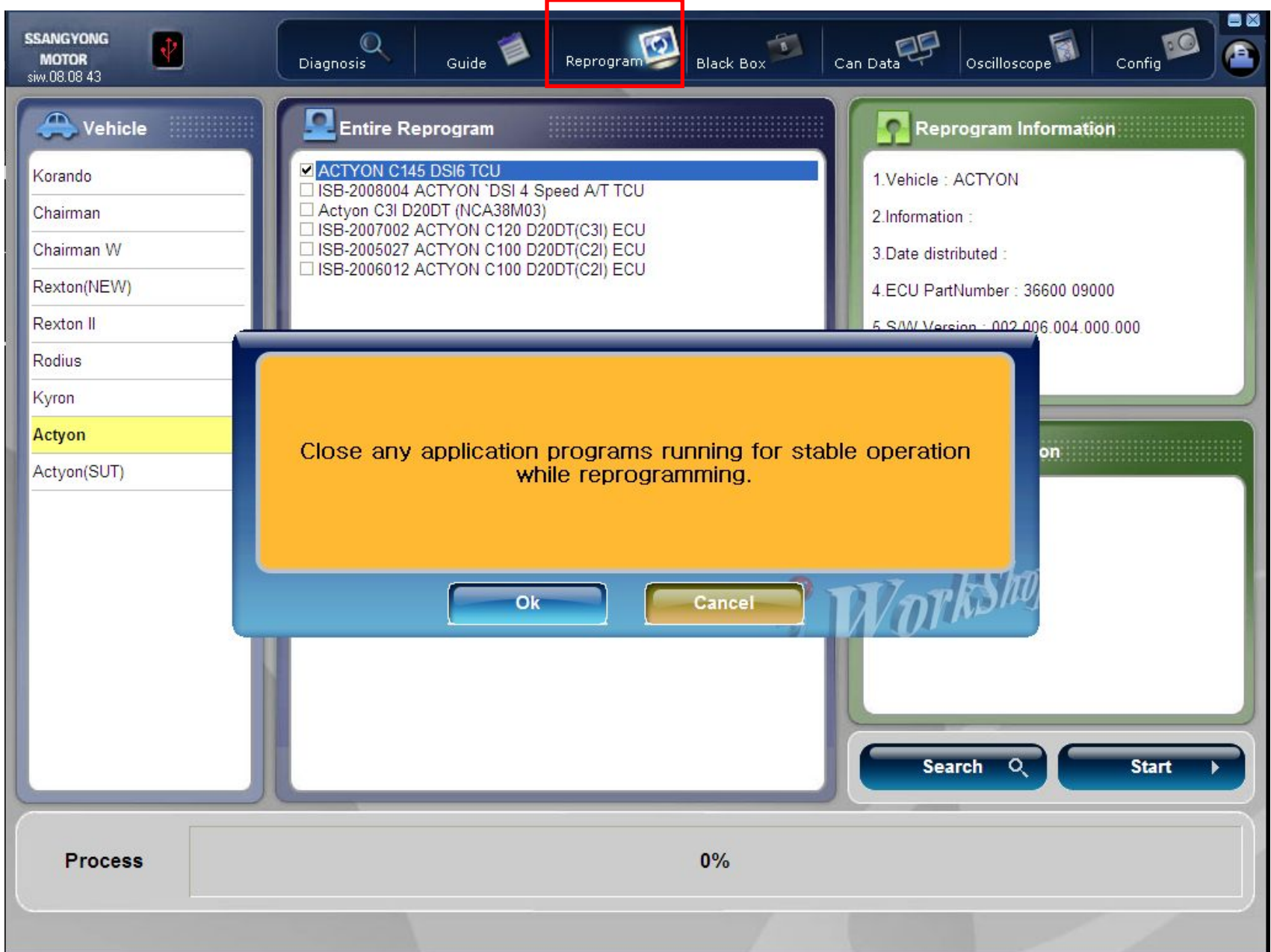
H/W Version : 00/00
S/W Version : 10/50/01
ECU PartNumber : *****

Search 

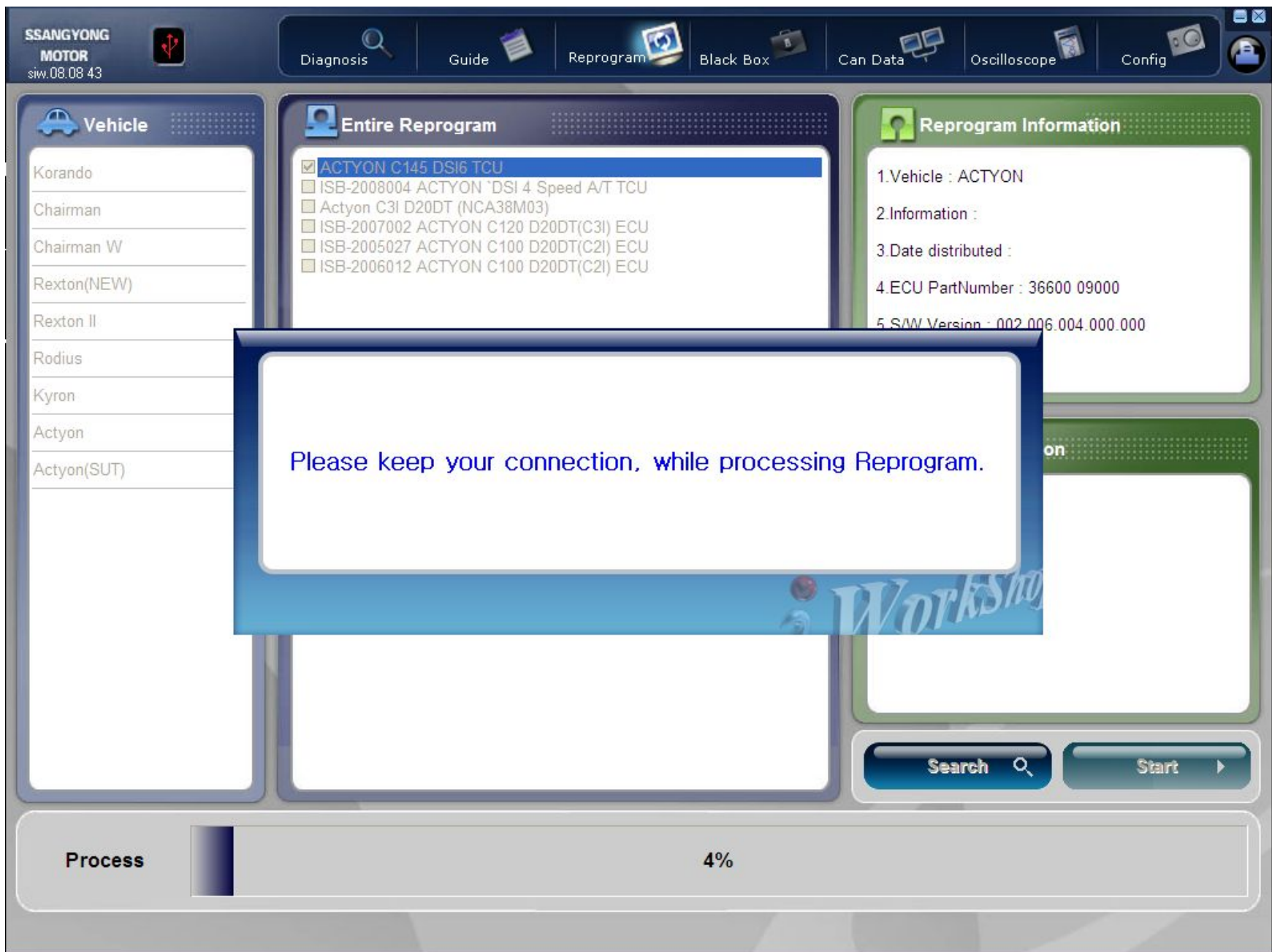
Start 

Process 0%

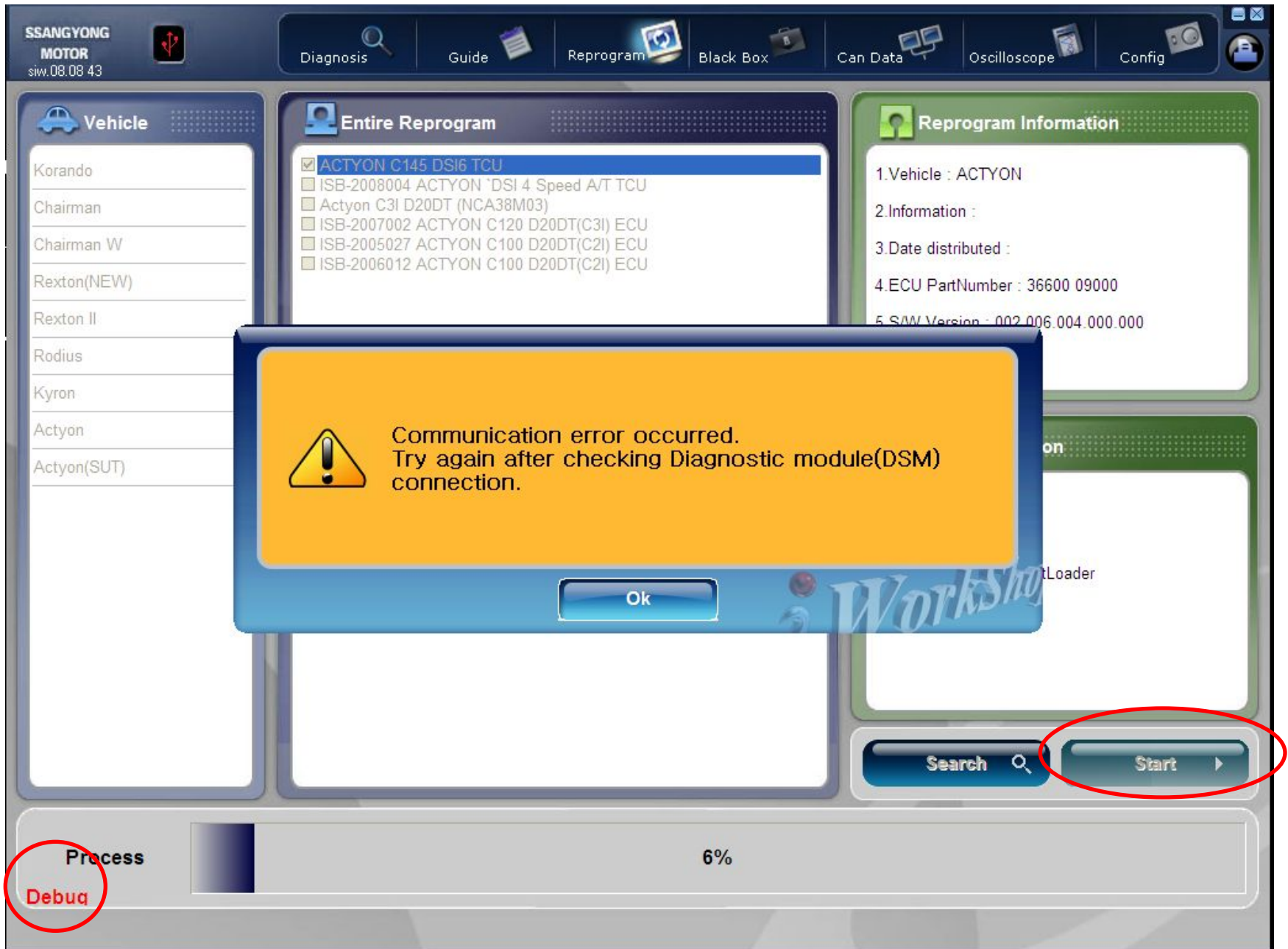
After reprogramming



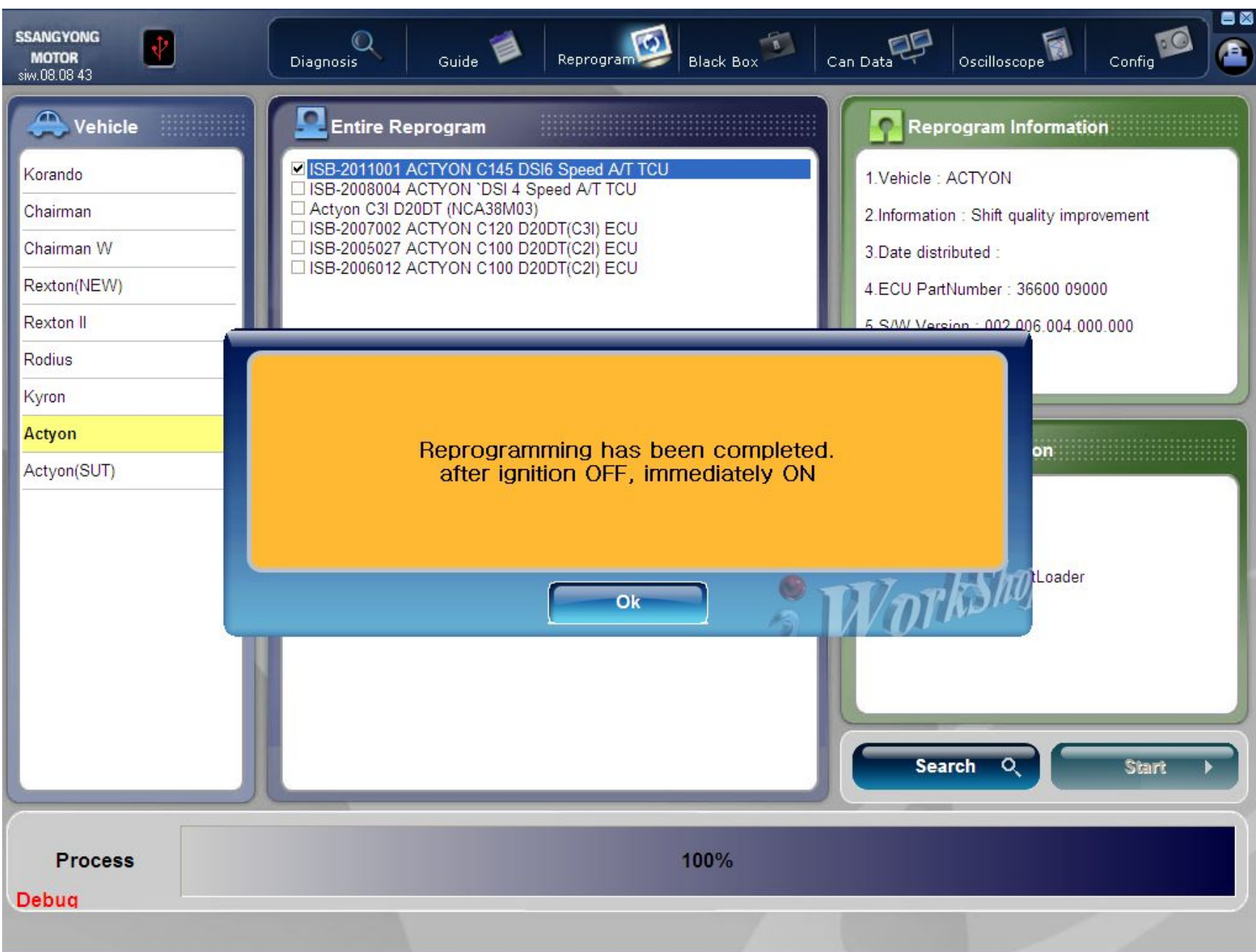
Can verify S/W version of current car model if click search button after Selecting affected reprogram data. (Refer to 1st page)



Be executed if click “Start” button.



When occurring error as above ignition key off/on and type "sync" and then "start" button.



Be sure to conduct Key on/off after finishing reprogram.



Diagnostic Menu

1. Diagnostic Trouble Code

2. Sensor Data

3. Identification

4. TCU Coding

5. TCU Initialization

System Actyon>>A/T>>DSI 6th

Finish

TCU Part No.	####-####
S/W Version	002.006.004.000.000
Calibration Version	002.006.004.000.000
CVN	A9259B23
Variant	D20DT EURO3/EURO4 4WD ABS

Check Identification and then conduct TCU Initialization.