

# WinDr & Simulator

**HITACHI**

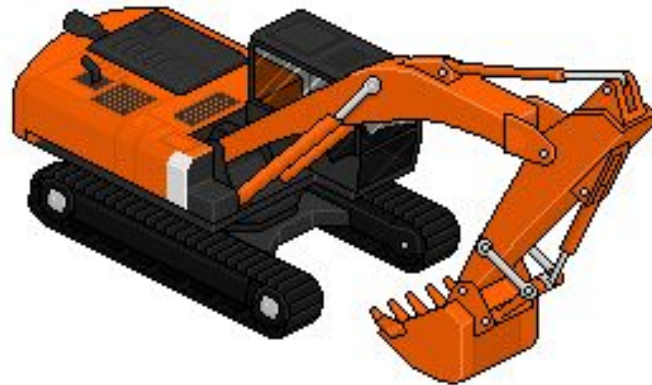
Reliable solutions



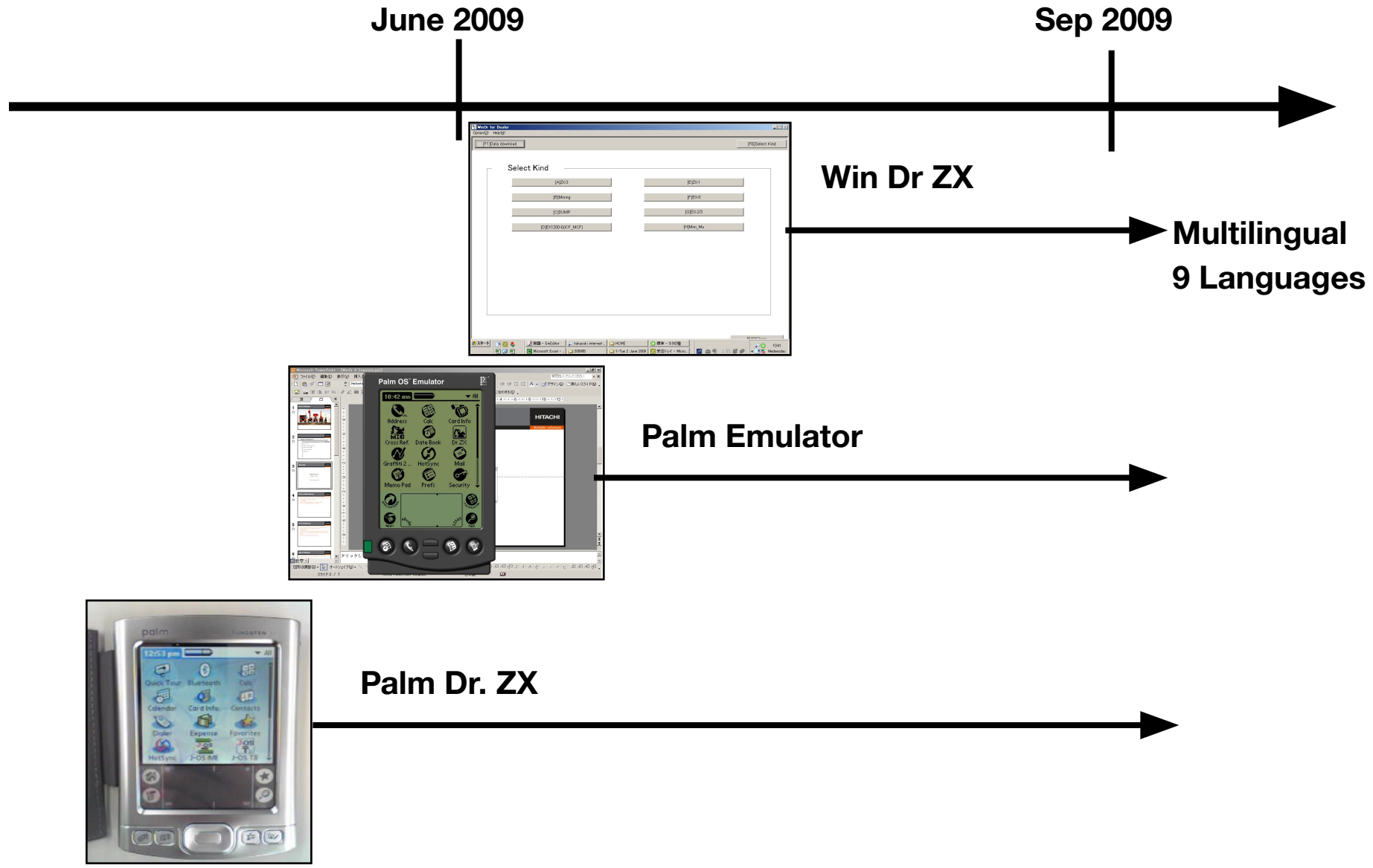
35min

- 
- 1 WinDr support**
  - 2 Comparison WinDr. with Dr.ZX for PDA**
  - 3 Cables needed (PC to ZX-3/ZW)**
  - 4 Palm Simulator**

Yemi Onabiyi should be contacted for all questions regarding WinDr.



# 2. Overview of diagnostic tools



## **Advantages WinDR and Security**

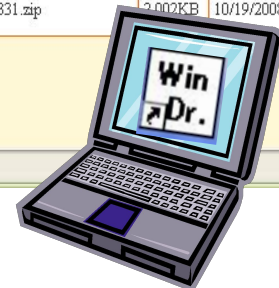
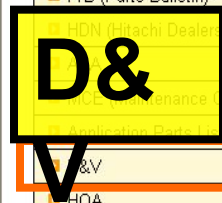
- Capable of displaying the information on large monitor
- Usable for HCM dump trucks ACII beside all other models
- All functions are available (diagnostics, parameters etc.)
- Possible to record data for up to 30 seconds
- Chinese, French, German, Italian, Turkish and Russian will be available
- Possible OS are Windows Vista, XP, 2000  
(Net Framework 2.0 SP1 & MDAC 2.8 SP1)

# 3. Comparison WinDr. with Dr.ZX for PDA

## Download and install the software

The screenshot shows the Hitachi D&V website's download page. The page title is "Download" and it says "Welcome To The D&V Download Page". There is a table of software downloads with columns for Installer, File Name, Size, Now Available Date, and Version. The "WinDr" section is highlighted with a red box, and the "Download" button for "WinDr. for Dealer" is also highlighted with a red box. A yellow arrow points from this button to the "D&V" logo in the bottom left corner.

Installer	File Name	Size	Now Available Date	Version		
<b>DrZX</b>						
DrZX for Dealer	DrZX_for_Dealer(Ver3_04_0001).zip	15,569KB	6/15/2008	3.04.0001	Download	Manual
DrZX for LimitedDealer	DrZX_for_LimitedDealer(Ver3_04_0001).zip	8,060KB	6/15/2008	3.04.0001	Download	Manual
DrZX for Customer	DrZX_for_Customer(Ver3_03_0001).zip	6,983KB	6/15/2008	3.03.0001	Download	Manual
DrZW for TCM	DrZW_for_TCM(Ver3_04_0001).zip	6,262KB	6/15/2008	3.04.0001	Download	Manual
<b>Security</b>						
DrZX for Security	DrZX_for_Security(Ver2_07_0005).zip	6,648KB	6/15/2008	2.07.0005	Download	Manual
<b>WinDr</b>						
WinDr. for Dealer	WinDr_For_Dealer(Ver2_1_1_1).zip	9,181KB	1/1/2007	2.1.1.1	Download	Manual
<b>MIC DataViewer</b>						
MICDataViewer	MICDV_V2501.zip	1,181KB	10/24/2005	2.5.0.1	Download	Manual
MICDataViewer update module	MICDV_UPDATE3331.zip	2,002KB	10/19/2008	3.3.3.1	Download	Manual



**Download & Install**



# 3. Comparison WinDr. with Dr.ZX for PDA

HITACHI

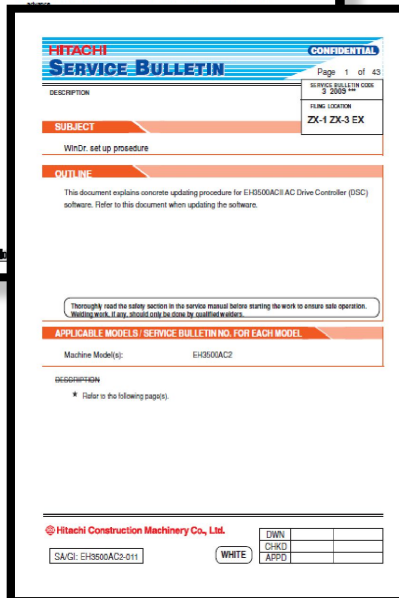
Reliable solutions

## Related document for WinDr.

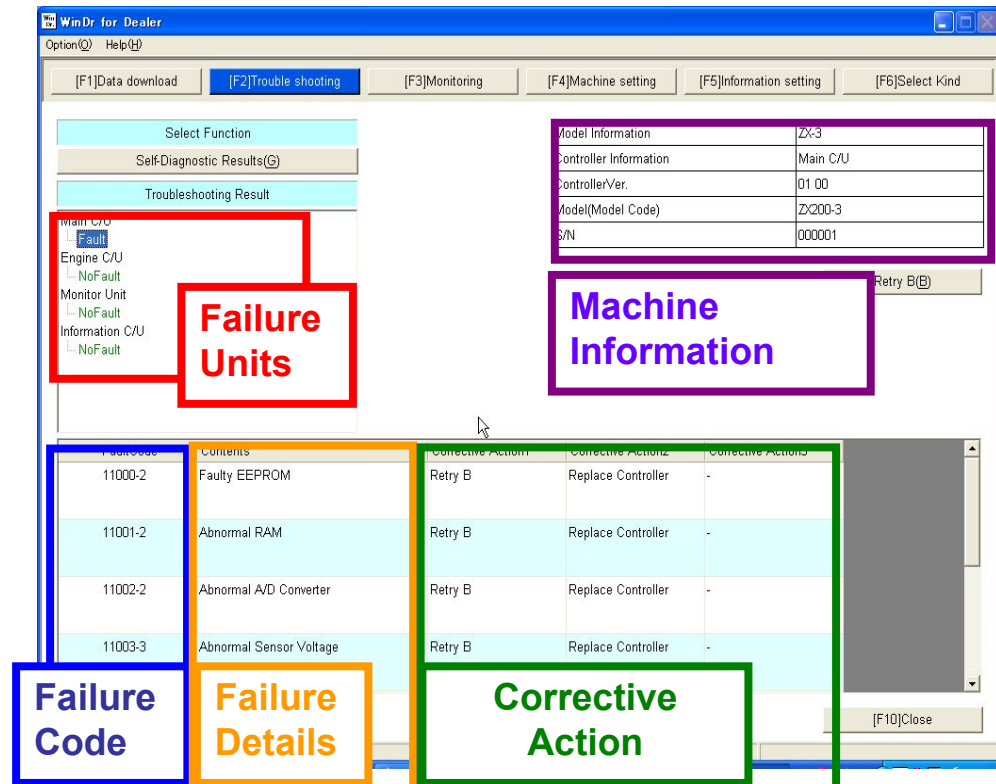
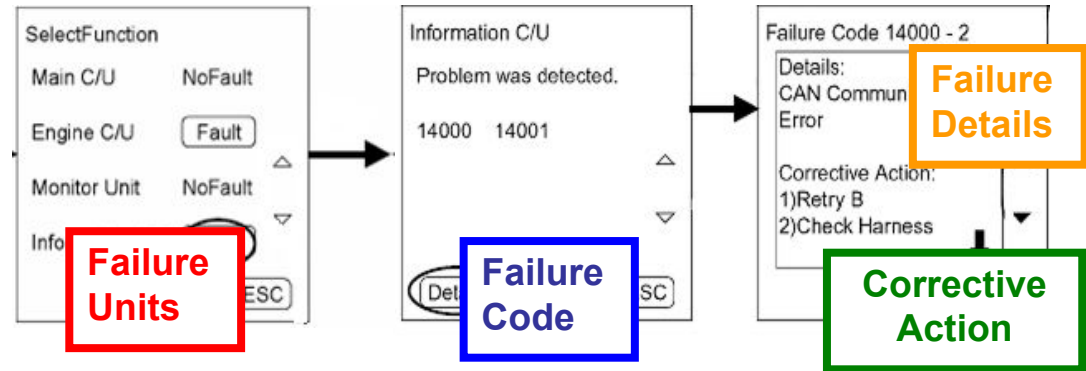
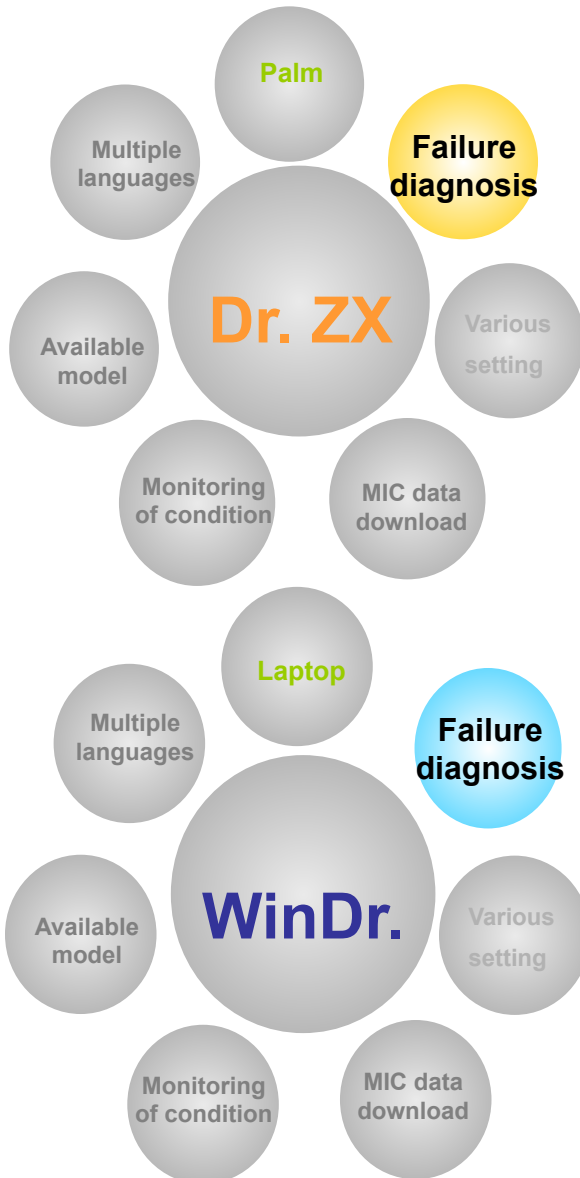
1. Technical manual: explains how to operate the WinDr. and incl. error code list

2. Installation manual: for installing the WinDr.'s software.

3. Service Bulletin: Mentioning all machine models for which WinDr can be used

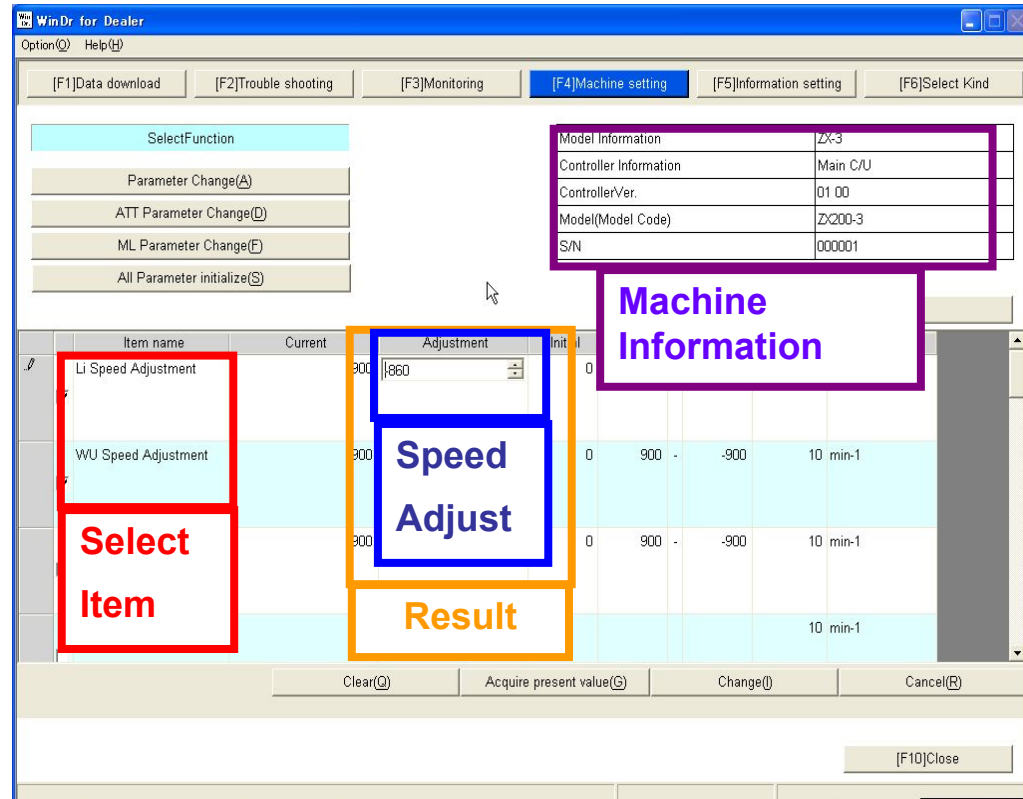
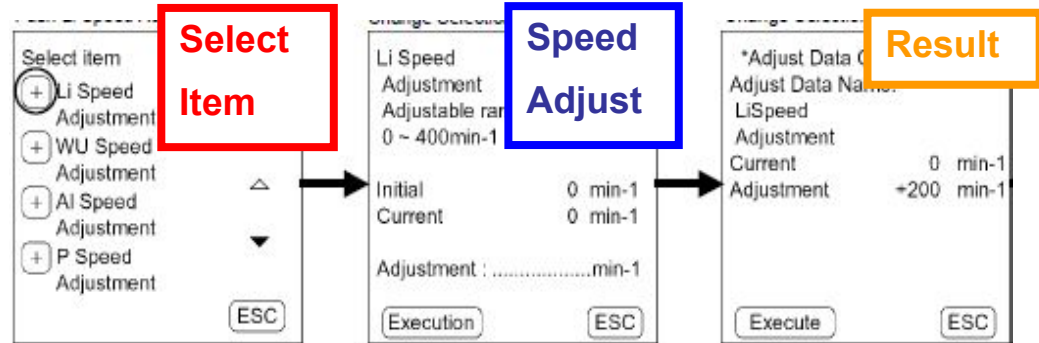
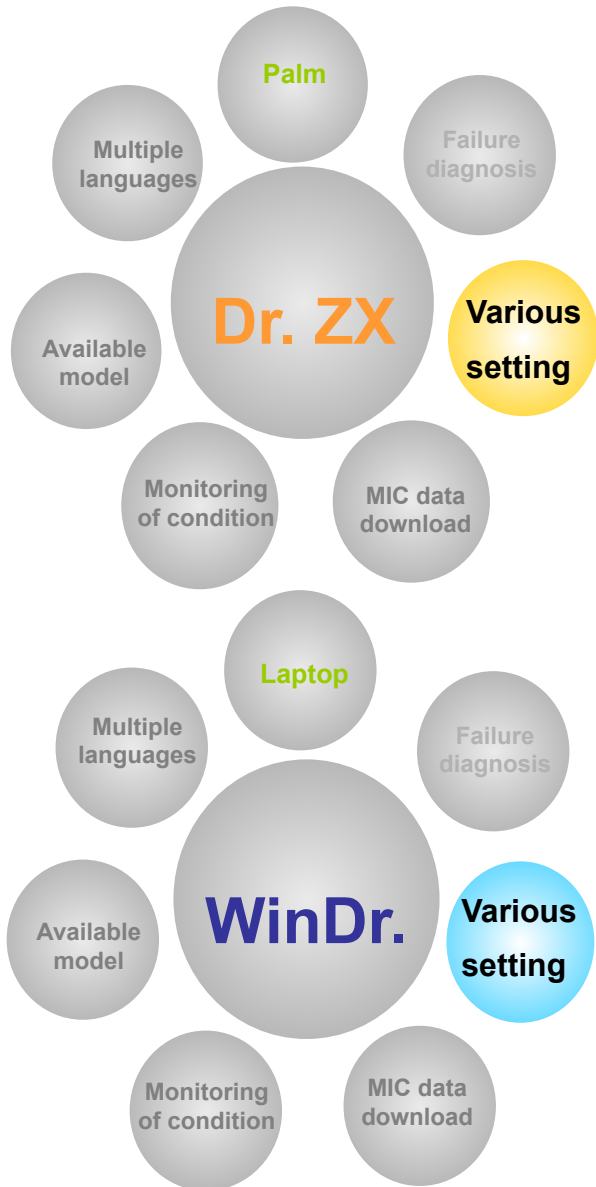


# 3. Comparison WinDr. with Dr.ZX for PDA

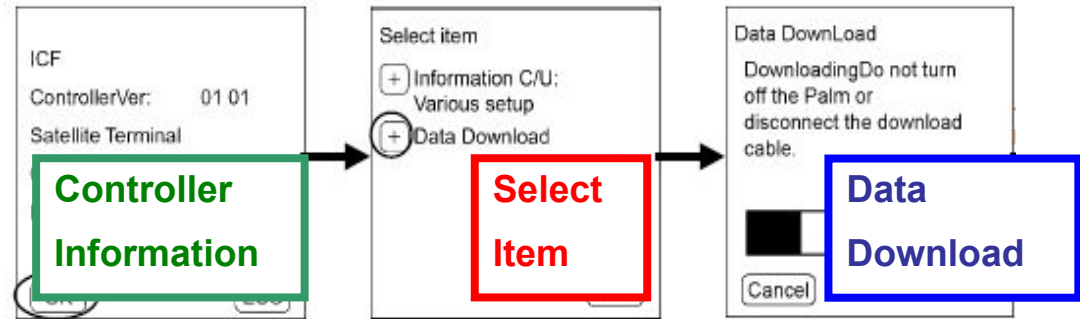
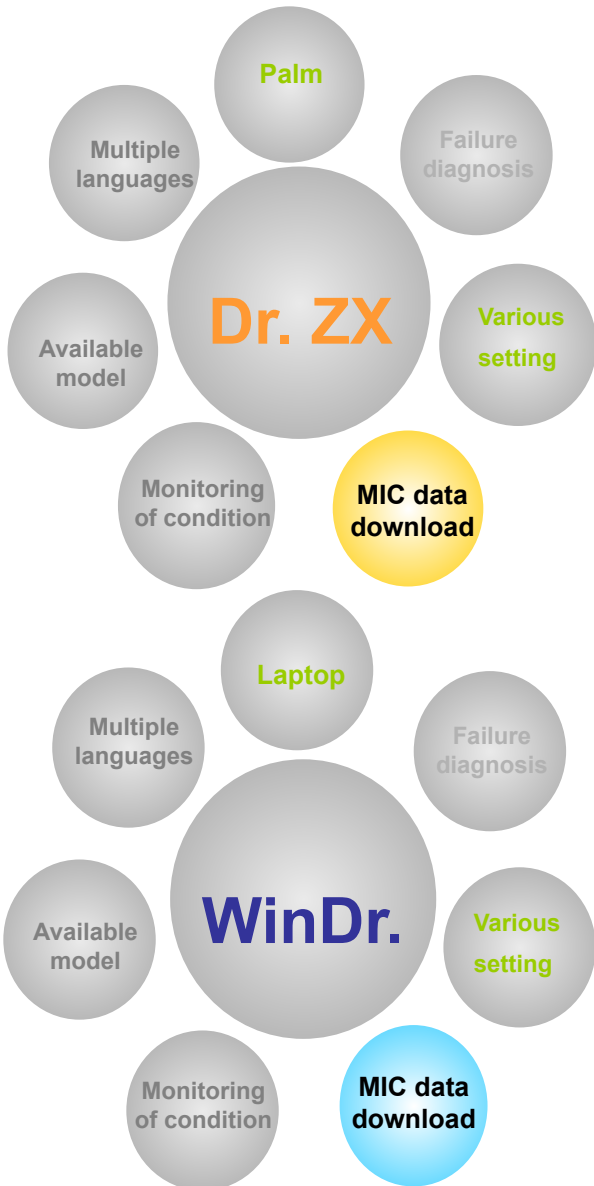




# 3. Comparison WinDr. with Dr.ZX for PDA



# 3. Comparison WinDr. with Dr.ZX for PDA

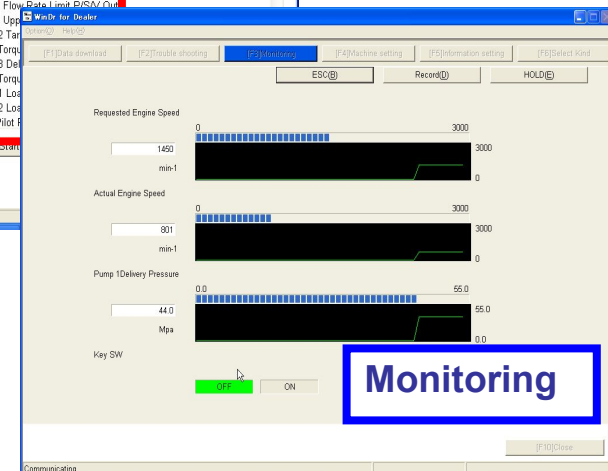
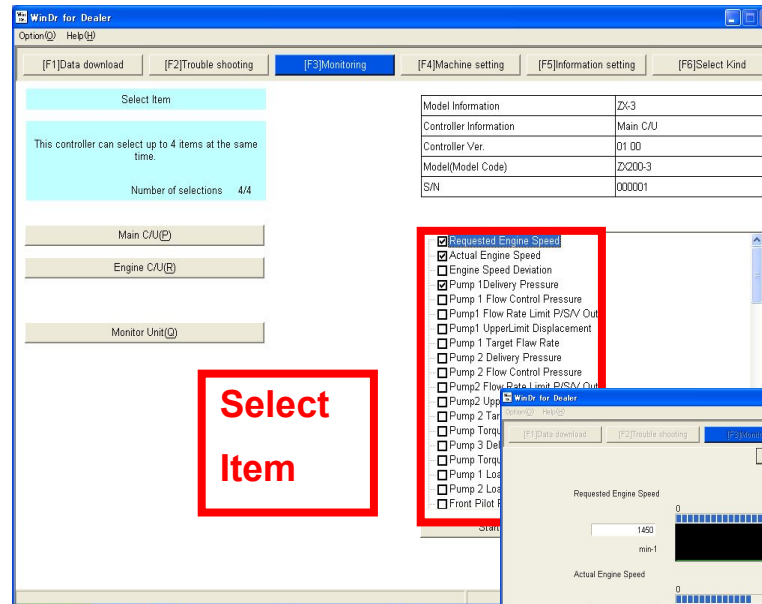
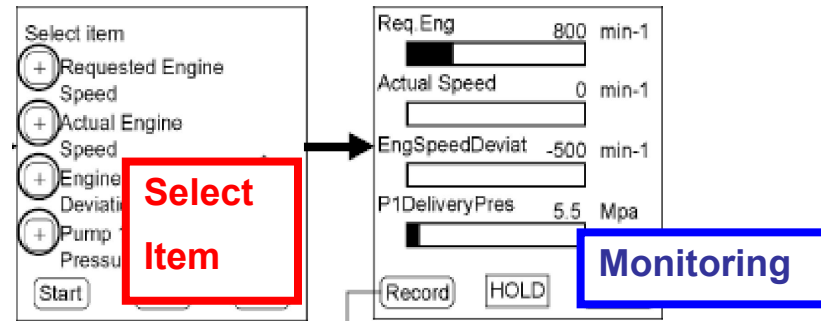
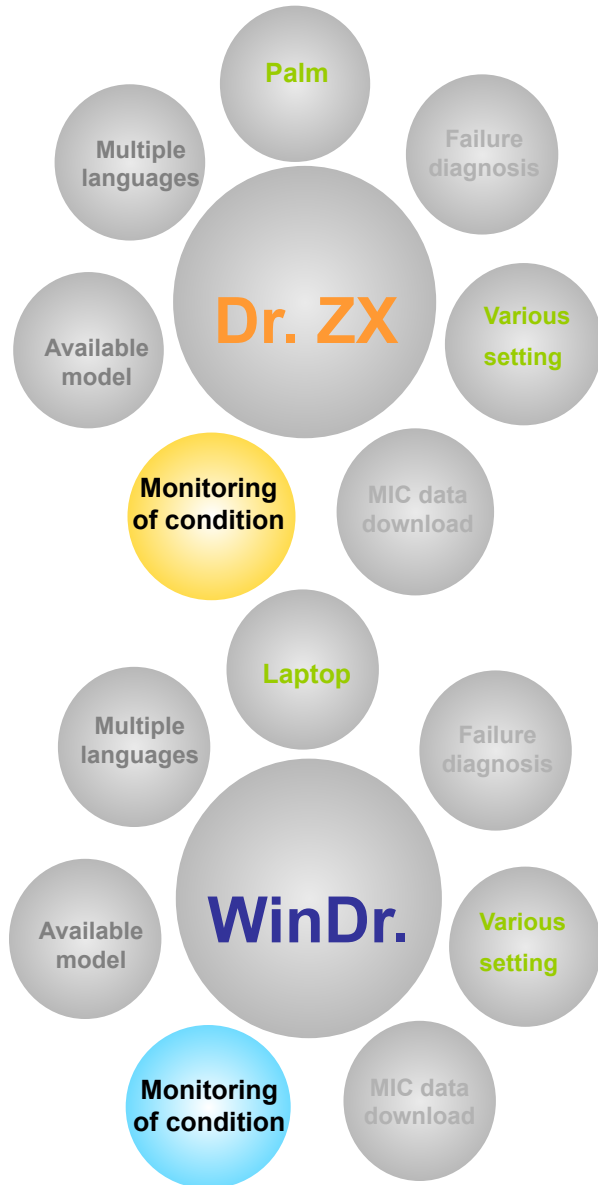


A screenshot of the 'WinDr. for Dealer' software interface. The window title is 'WinDr. for Dealer'. The menu bar includes 'Option(O)' and 'Help(H)'. The toolbar has function keys: [F1] Data download, [F2] Trouble shooting, [F3] Monitoring, [F4] Machine setting, [F5] Information setting, and [F6] Select Kind. A 'Select Function' dialog box is open, with 'Data DownLoad(A)' highlighted by a blue box and a red box. Below it is a 'Save Data Check(B)' button. To the right, a table displays system information:

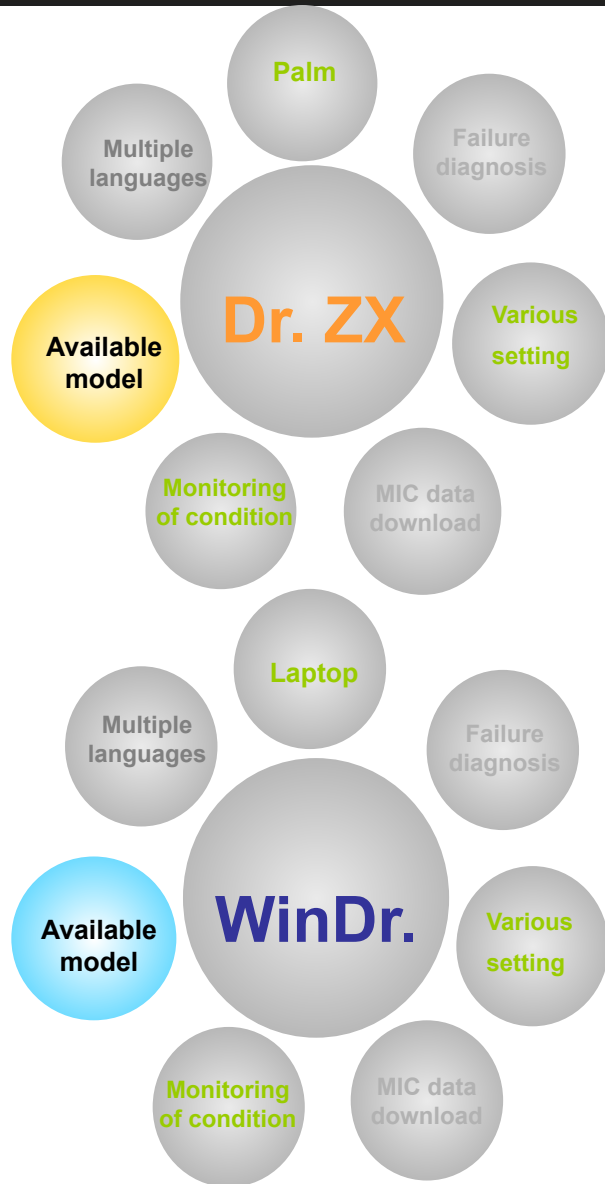
Model Information	ZX-3
Controller Information	Information C/U
ControllerVer.	01 00
Model(Model Code)	Z200-3(ABCD)
S/N	000001

A 'Data DownLoad' dialog box is overlaid on the main window, showing a progress bar at 0.0% and a 'Cancel(C)' button. A red box highlights 'Select Item' and a blue box highlights 'Data Download'. A green box highlights the 'Controller Information' table. At the bottom of the window, a status bar reads: 'It is communicating with the controller. Please wait for a while.' and a '[F10]Close' button is visible.

# 3. Comparison WinDr. with Dr.ZX for PDA



# 3. Comparison WinDr. with Dr.ZX for PDA



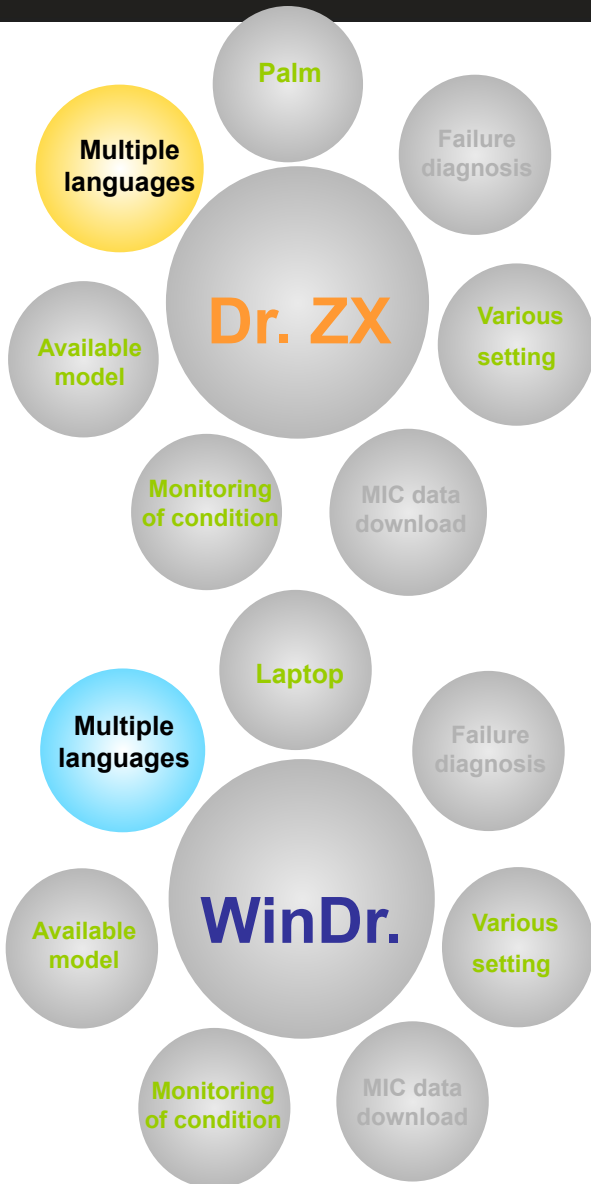
### Dr.ZX

EX-2 / EX-3 / EX-5	EX-5 ( Giant )
ZX-1	EX-6 ( Giant )
ZX-3	Mini excavator
EX-1 ( Giant )	Wheel Loader

### WinDr.

EX-2 / EX-3 / EX-5	EX-5 ( Giant )
ZX-1	EX-6 ( Giant )
ZX-3	Mini excavator
EX-1 ( Giant )	Wheel Loader
AC Dump Truck	Post Zaxis ( 2011- )

# 3. Comparison WinDr. with Dr.ZX for PDA



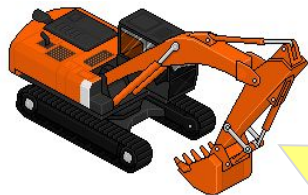
Dr.ZX	
English	Japanese
Chinese	French
German	Italian
Spanish	Turkish

WinDr.	
English	Japanese
Chinese	French
German	Italian
Spanish	Turkish
Russian	

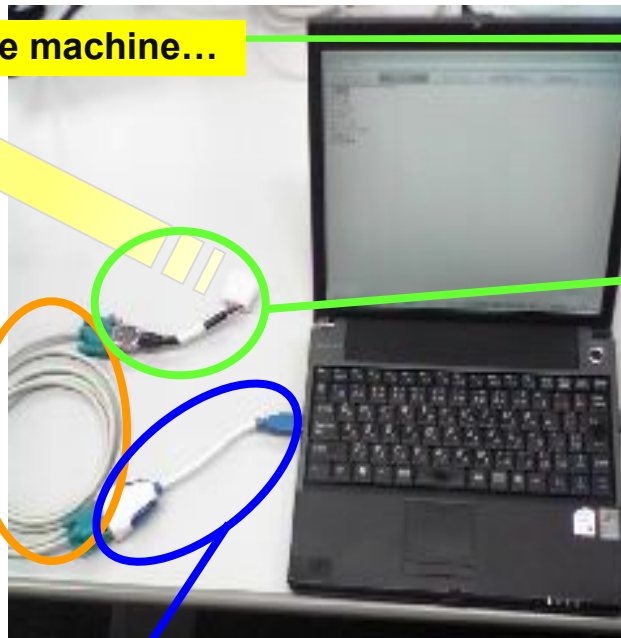
# Overview Diagnostic Software

HITACHI

Reliable solutions



To the machine...



<Connecting cables>

ZX-3/ZW  
(P/No. 3108613)



For ZX-1/EX  
(P/No. 4476512)



For Giant Size/Dump  
(P/No. 4486988)



Needs to confirm  
the ports of your  
computer

Interlink cross cable  
(P/No. 4668565)



USB conversion cable  
(P/No. E0A000569)





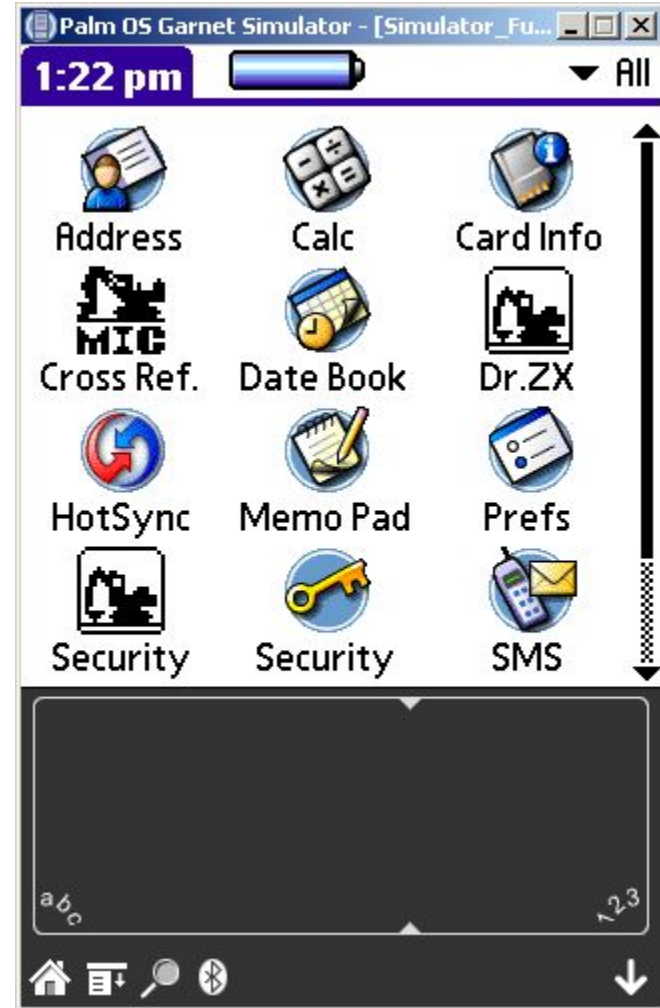
## 4. Cables needed (PC to ZX-3/ZW)

For good operation of the WinDr program HCME recommends the following cables:

- EasySync (US232/-L) (US232R-10/100)
- Quatech (SSU2-100)

## Advantages Simulator

- Dr.ZX and Security for PDA can be used on laptop (8 languages)
- Palm image can be projected easily on a big screen
- Older OS can be used, for example Windows 98
- Same cables as WinDR and Security
- Can be downloaded from <http://www.accessdevnet.com/>



Thank you for your attention