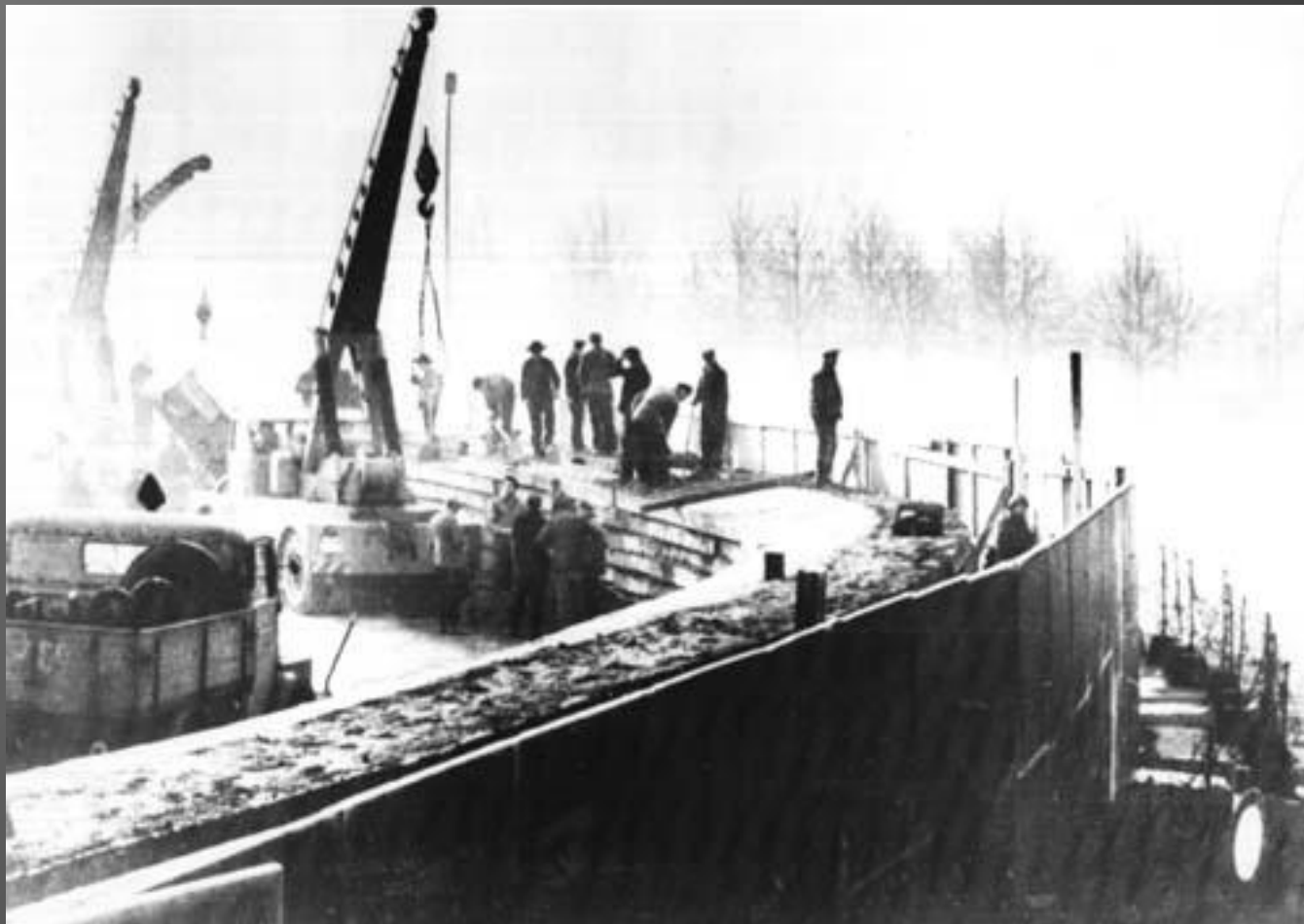
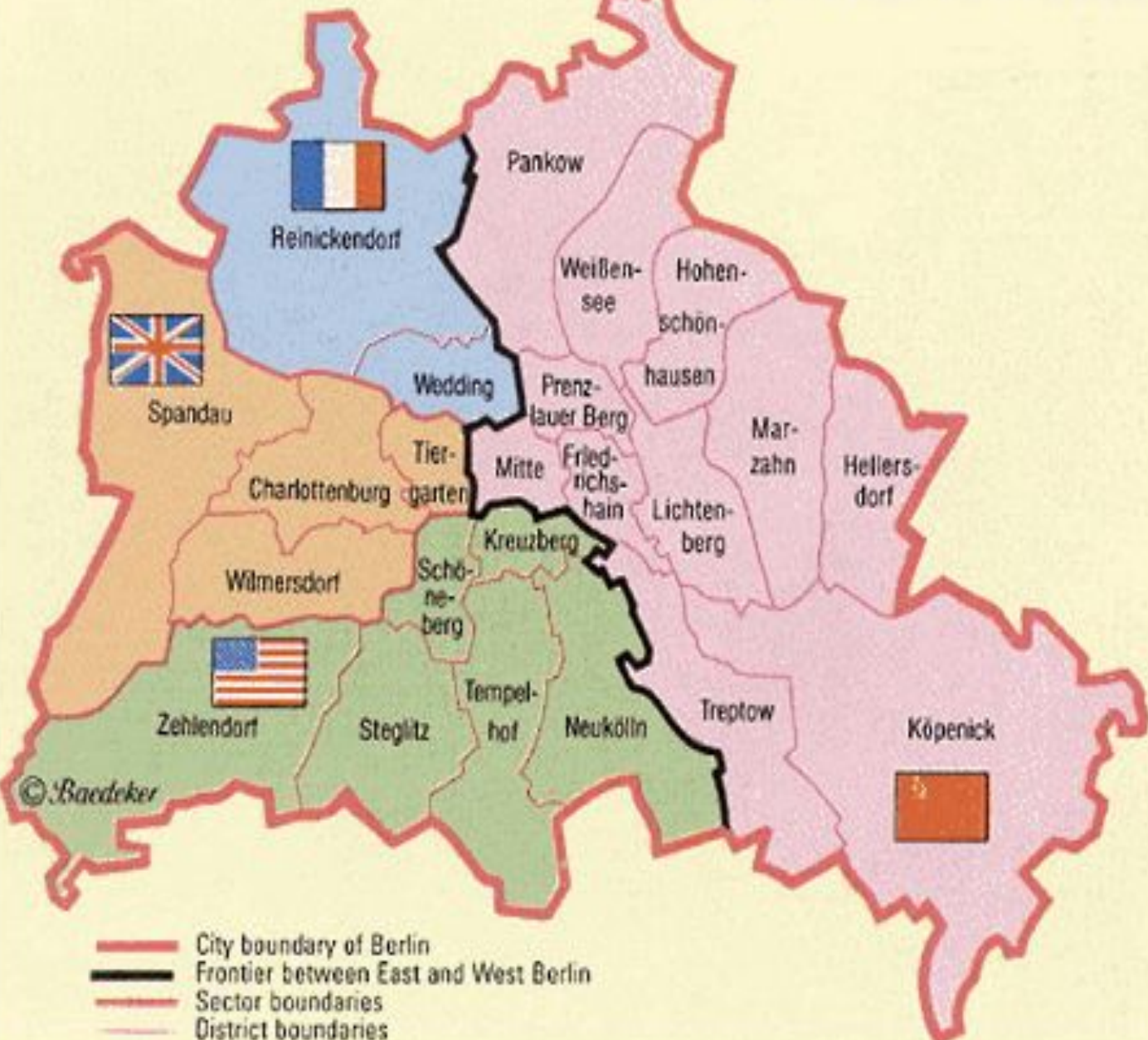


Побудова Берлінського муру



The four sectors of Berlin from 1945 until 1990

Сектори
США,
Велиобританії,
Франції
та
СРСР



- City boundary of Berlin
- Frontier between East and West Berlin
- Sector boundaries
- District boundaries



ФРГ

ГДР

ГЕРМАНИЯ

ФРН



НДР

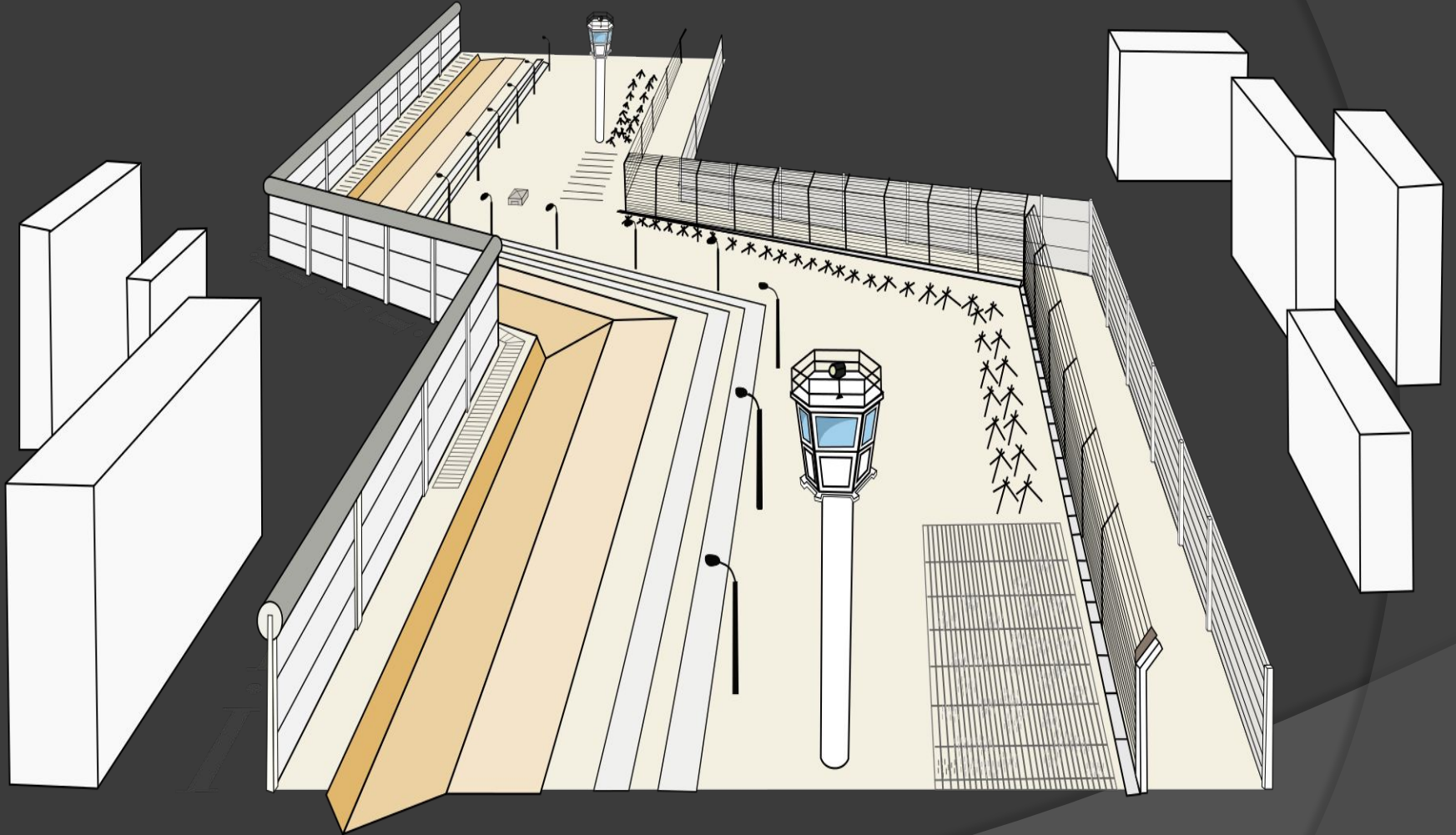


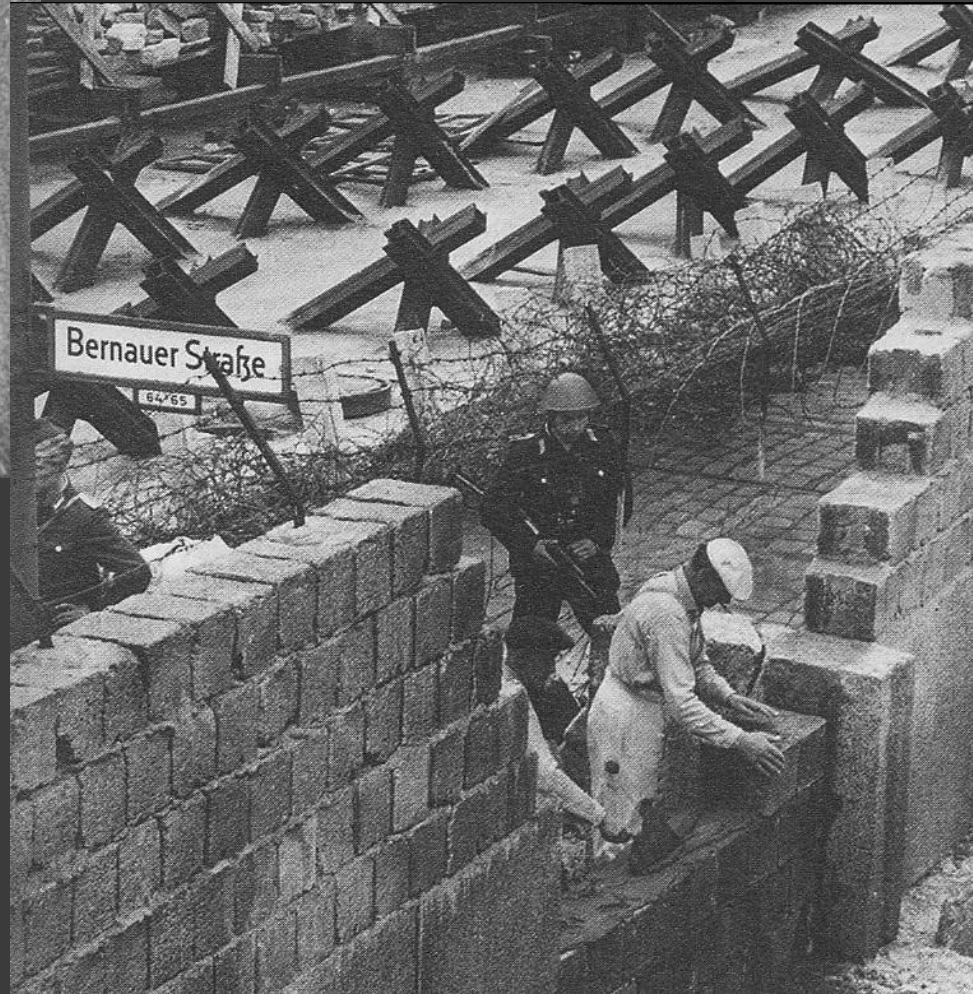




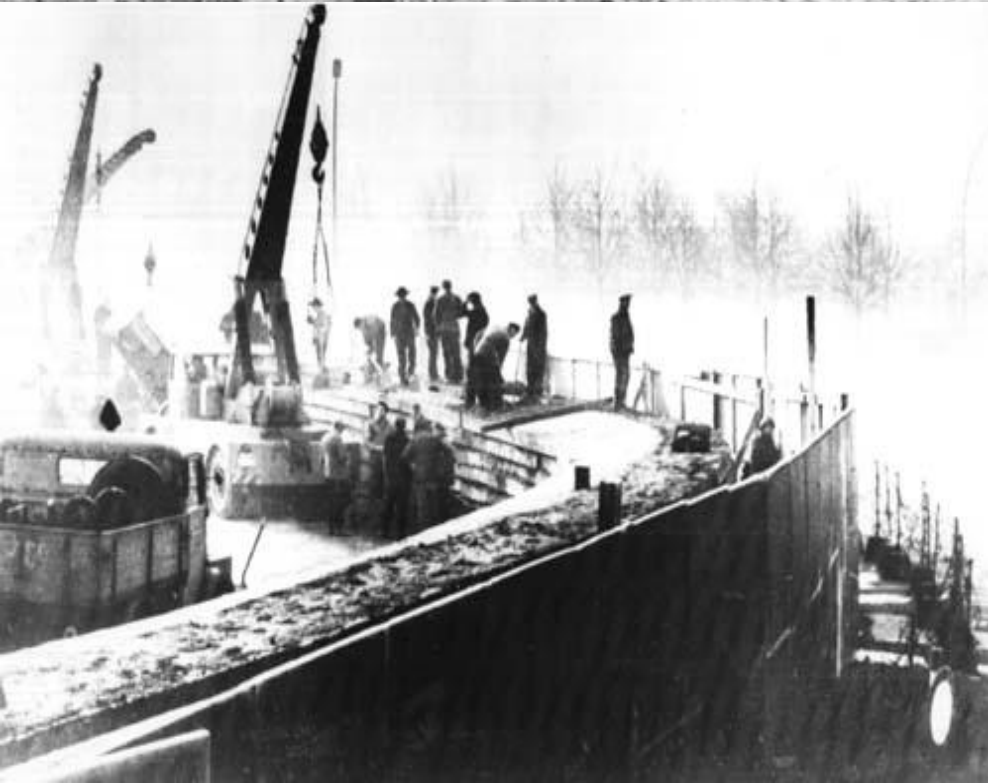
West Berlin

East Berlin



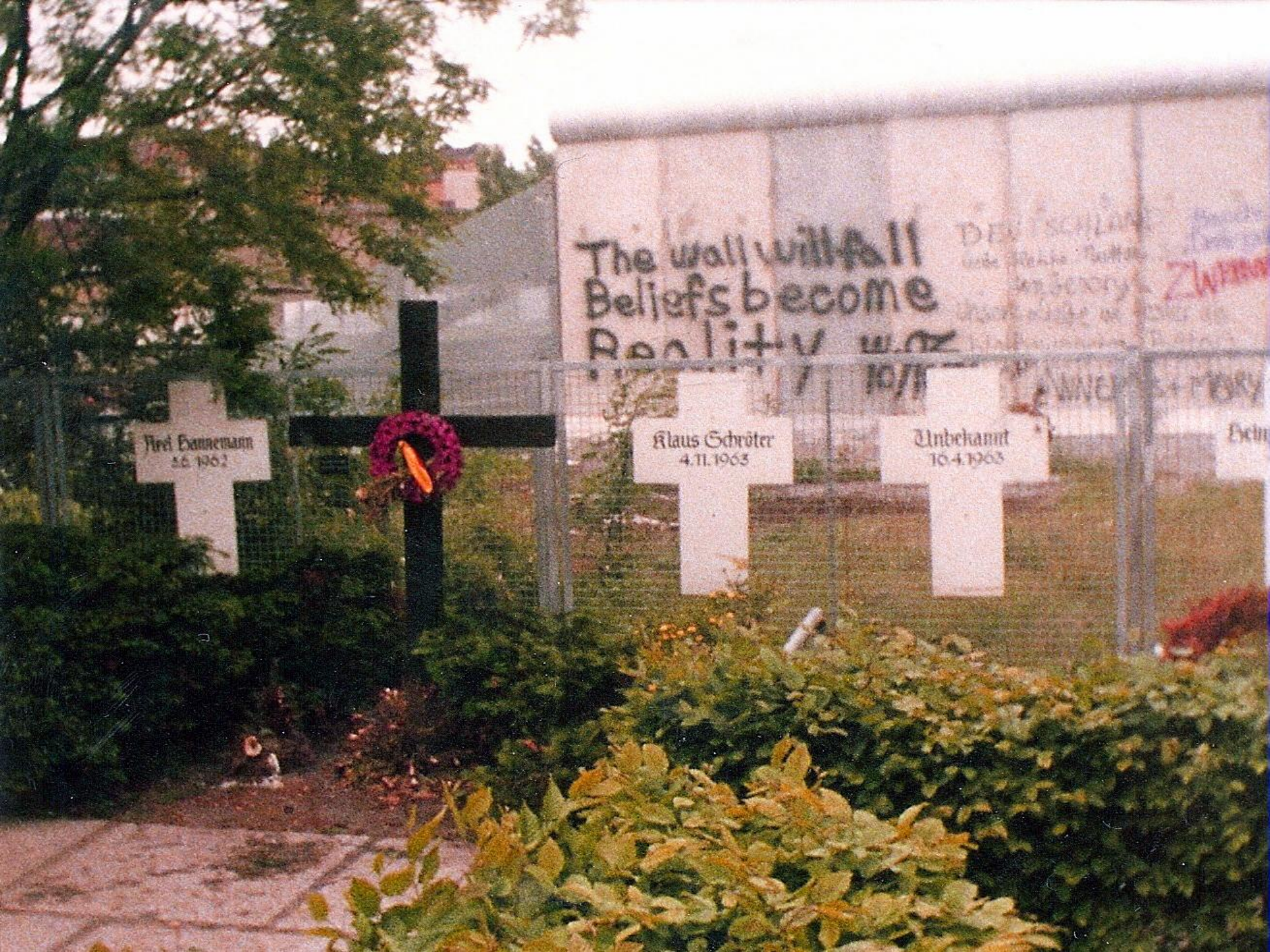












Hrei Exannemann
26.10.62

Klaus Schröter
4.11.1963

Unbekannt
16.4.1963

The wall will fall
Beliefs become
Reality was

DEUTSCHLAND
mitte Rechte - Berlin
an GEGEN
Denn nicht ist

ZWISCHEN

10/11

LEINER
+ PERRY

Extr





MTI

A low-angle photograph captures a person's lower legs and feet as they walk across a cobblestone street. The person is wearing dark blue jeans and dark blue sneakers with white laces and white soles. Their right foot is positioned directly on a rectangular, rusted metal plaque embedded in the pavement. The plaque is engraved with the text "BERLINER MAUER 1987-1989" in a bold, sans-serif font. The surrounding pavement consists of various shades of grey and brown cobblestones, some of which are scattered with small, dry, brown leaves. The background is dark and out of focus, suggesting an urban setting.