

THE HISTORY OF ARCHITECTURE

FROM PREHISTORIC TO MODERN TIMES



**The nineteenth Album:
THE WORLD'S ARCHITECTURE
OF THE 1900's**



Albums of characteristic examples for the Educational course

by Dr. Konstantin I.Samoilov

Almaty, 2017

This series of albums generated for information purposes of the Educational course "The General History of Architecture": 2 credits / 30 hours of lectures.

Until the 1900's, examples are grouped by region. In this period, the phenomenon of a single world architectural process begins to manifest itself. Since the 1900's, examples have been grouped by decades.

Thirty albums illustrate the following topics:

- the 1st Album: EDUCATIONAL AND SCIENTIFIC-THEORETICAL SOURCES
- the 2nd Album: THE PREHISTORIC ERA'S ARCHITECTURE
- the 3rd Album: THE ANCIENT EGYPTIAN ARCHITECTURE
- the 4th Album: THE ANCIENT MESOPOTAMIAN ARCHITECTURE
- the 5th Album: THE ANCIENT GREEK ARCHITECTURE
- the 6th Album: THE ANCIENT ROMAN ARCHITECTURE
- the 7th Album: THE MEDIEVAL EUROPEAN ARCHITECTURE
- the 8th Album: THE EUROPEAN RENAISSANCE'S ARCHITECTURE
- the 9th Album: THE MEDIEVAL MAGHREB'S, THE NEAR EASTERN AND THE CAUCASUS'S ARCHITECTURE
- the 10th Album: THE MEDIEVAL CENTRAL ASIAN ARCHITECTURE
- the 11th Album: THE ANCIENT AND MEDIEVAL CHINESE ARCHITECTURE
- the 12th Album: THE MEDIEVAL SOUTHEASTERN AND EASTERN ASIAN ARCHITECTURE
- the 13th Album: THE MEDIEVAL CENTRAL AMERICAN ARCHITECTURE
- the 14th Album: THE EASTERN EUROPE MIDDLE AGES AND NEW TIMES ARCHITECTURE
- the 15th Album: THE WESTERN EUROPEAN AND THE NORTH AMERICAN NEW TIMES ARCHITECTURE

- the 16th Album: THE WORLD'S ARCHITECTURE OF THE 1870's
- the 17th Album: THE WORLD'S ARCHITECTURE OF THE 1880's
- the 18th Album: THE WORLD'S ARCHITECTURE OF THE 1890's
- **the 19th Album: THE WORLD'S ARCHITECTURE OF THE 1900's**
- the 20th Album: THE WORLD'S ARCHITECTURE OF THE 1910's
- the 21st Album: THE WORLD'S ARCHITECTURE OF THE 1920's
- the 22nd Album: THE WORLD'S ARCHITECTURE OF THE 1930's
- the 23rd Album: THE WORLD'S ARCHITECTURE OF THE 1940's
- the 24th Album: THE WORLD'S ARCHITECTURE OF THE 1950's
- the 25th Album: THE WORLD'S ARCHITECTURE OF THE 1960's
- the 26th Album: THE WORLD'S ARCHITECTURE OF THE 1970's
- the 27th Album: THE WORLD'S ARCHITECTURE OF THE 1980's
- the 28th Album: THE WORLD'S ARCHITECTURE OF THE 1990's
- the 29th Album: THE WORLD'S ARCHITECTURE OF THE 2000's
- the 30th Album: THE WORLD'S ARCHITECTURE OF THE 2010's

Examples are distributed in chronological order of the construct completion.

Images sources are indicated directly near with illustrations on each page.

Architects and companies listed on the basis of aggregate data from different sources (for some objects from various sources indicate different authors). About some buildings listed authors in the available sources has not yet been found.

The Author expresses his gratitude to Internet resources – <https://www.google.com> ; <https://www.wikipedia.org> – which to provide the ability to collect an information.

The 19th Album's front cover:

The Windau (Riga) Railway station, Moscow, Russia, 1901

(Arch. Stanislav A. Brzhozovsky) - http://photos.wikimapia.org/p/00/01/25/37/04_big.jpg

The Grand Post Office / Büyük Postane, Istanbul, Turkey, 1909 (Arch. Mehmet Vedat Tek) -

<http://www.byzantiumistanbul.com/dosya/buyuk/9193549.JPG>

The Hungarian Parliament Building, Budapest, Hungary, 1904 (Arch. Imre Steindl) - http://pilisvorosvar.hu/vorosvariujzag-regi/2011/augusztus/images/vorosvariujzag_69.jpg

The Casa Batlló / Casa dels ossos (House of Bones), Barcelona, Spain, 1907 (Arch. Antoni Plàcid Guillem Gaudí i Cornet) -

<https://www.casabatllo.es/wp-content/uploads/2013/07/casa-batllo-facade.jpg>

Purpose of the 19th Lecture:

To study the basic features of the World architecture in 1900's.

Tasks of the 19th Lecture:

- To consider characteristic examples of specifically organized spaces and buildings;
- To accentuate the features of construction depending on the availability of building materials;
- To emphasize the difference between cult and dwelling buildings.

Tasks for the self-research work:

1. Study the change in the nomenclature of buildings and structures during the evolution of the 1900's Architecture.
2. Analyze geometric parameters of main types of structures and buildings.

Questions for the self-preparation:

1. Accentuate the features of the USA's 1900's architecture
2. Accentuate the features of the European 1900's architecture

Themes of abstracts (16 pages, 40 000 characters, A4 format):

1. The evolution of the British 1900's Architecture
2. The evolution of the French 1900's Architecture
3. The evolution of the Russian 1900's Architecture

Examples for the 19th Lecture:

- 19.1 The Windau (Riga) Railway station, Moscow, Russia, 1901 (Arch. Stanislav A.Brzhozovsky)
- 19.2 The First National Bank and Trust Company Building, Perry, Oklahoma, USA, 1902 (Arch. Joseph Pierre Foucart)
- 19.3 The Telfair County Courthouse and Jail, McRae, Georgia, USA, 1902 (Arch. "Dennis & Dennis")
- 19.4 The Ryabushinsky's mansion, Moscow, Russia, 1903 (Arch. Fedor O.Shekhtel')
- 19.5 The Hungarian Parliament Building, Budapest, Hungary, 1904 (Arch. Imre Steindl)
- 19.6 The Yaroslavl Railway station (reconstruction), Moscow, Russia, 1904 (Arch. Fedor O.Shekhtel')
- 19.7 The Wilson Building, Dallas, Texas, USA, 1904 (Arch. A.Watson, "Sanguinet & Staats")
- 19.8 The Casa Batlló / Casa dels ossos (House of Bones), Barcelona, Spain, 1907 (Arch. Antoni Plàcid Guillem Gaudí i Cornet)
- 19.9 The Apartment (The Prasada), New-York, USA, 1907 (Arch. Charles W.Romeyn and Henry R.Wynne)
- 19.10 The Grand Post Office / Büyük Postane, Istanbul, Turkey, 1909 (Arch. Mehmet Vedat Tek)

**19.1 The Windau (Riga) Railway station, Moscow, Russia, 1901
(Arch. Stanislav A.Brzhozovsky)**



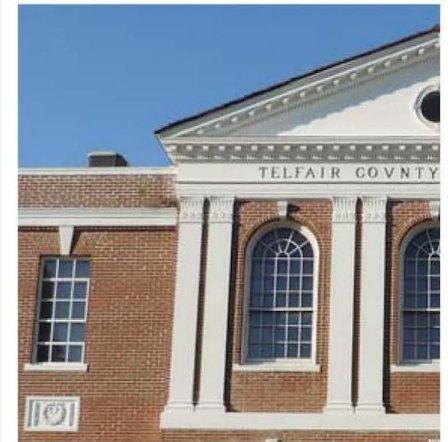
Source: http://photos.wikimania.org/p/00/01/25/37/04_big.jpg; http://www.zdt-magazine.ru/publik/history/2006/images/tolstov10_06-3.jpg; http://photos.wikimania.org/p/00/05/42/16/50_big.jpg

19.2 The First National Bank and Trust Company Building, Perry, Oklahoma, USA, 1902 (Arch. Joseph Pierre Foucart)



Source: <http://mw2.google.com/mw-panoramio/photos/medium/64837826.jpg> ; https://upload.wikimedia.org/wikipedia/commons/thumb/c/ca/First_National_Bank2.jpg/250px-First_National_Bank2.jpg ; <http://okgenweb.net/~okogan/lineage/pic/foucart.jpg>

19.3 The Telfair County Courthouse and Jail, McRae, Georgia, USA, 1902 (Arch. "Dennis & Dennis")



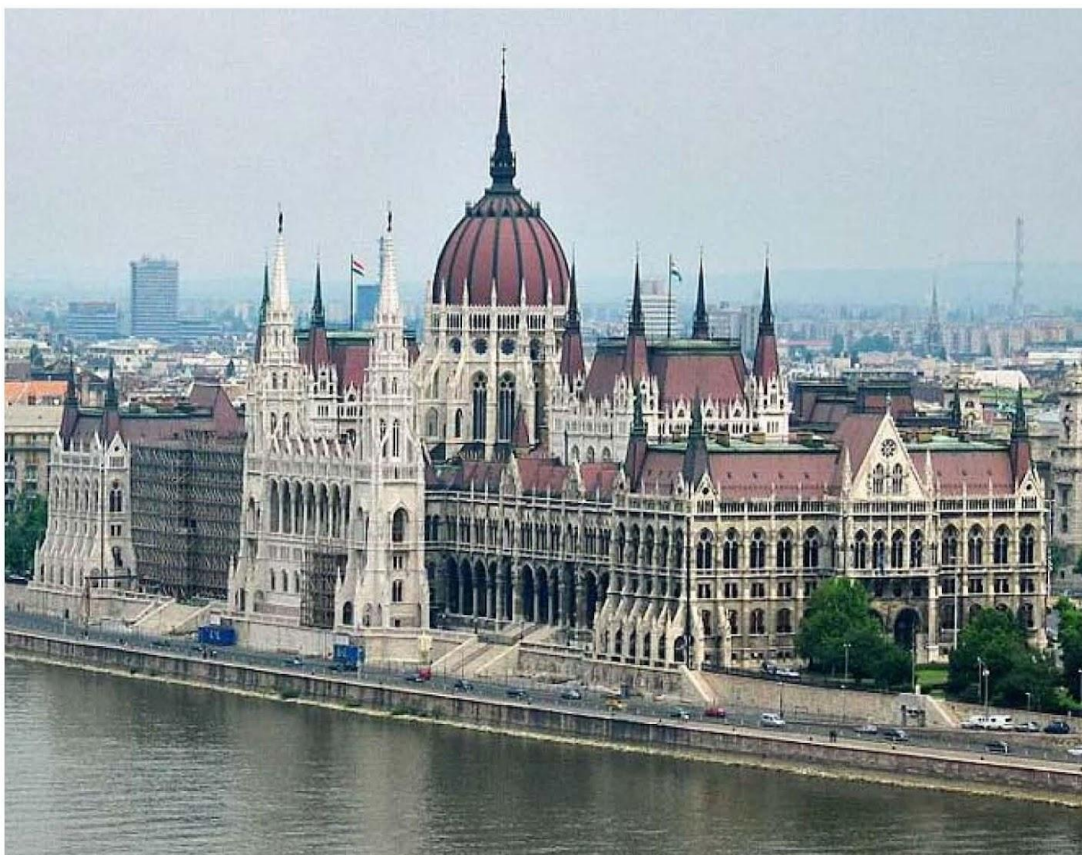
Source: https://farm8.staticflickr.com/7414/13634662974_105f64cd2b_b.jpg ; https://farm4.staticflickr.com/3719/13634646634_aa558da9ac_b.jpg ;
<http://georgiainfo.galileo.usg.edu/images/uploads/gallery/TelfairCoCourthouse.jpg>

19.4 The Ryabushinsky's mansion, Moscow, Russia, 1903 (Arch. Fedor O. Shekhtel')



Source: http://ic.pics.livejournal.com/rizhkin/11142970/46008/46008_original.jpg ; <http://urixblog.com/p/2010/2010.09.19or/picture-30.jpg> ; http://shagau.ru/wp-content/uploads/2015/11/DSC_0396.jpg ; <http://cdn.static3.rtr-vesti.ru/vh/pictures/b/224/058.jpg>

19.5 The Hungarian Parliament Building, Budapest, Hungary, 1904 (Arch. Imre Steindl)



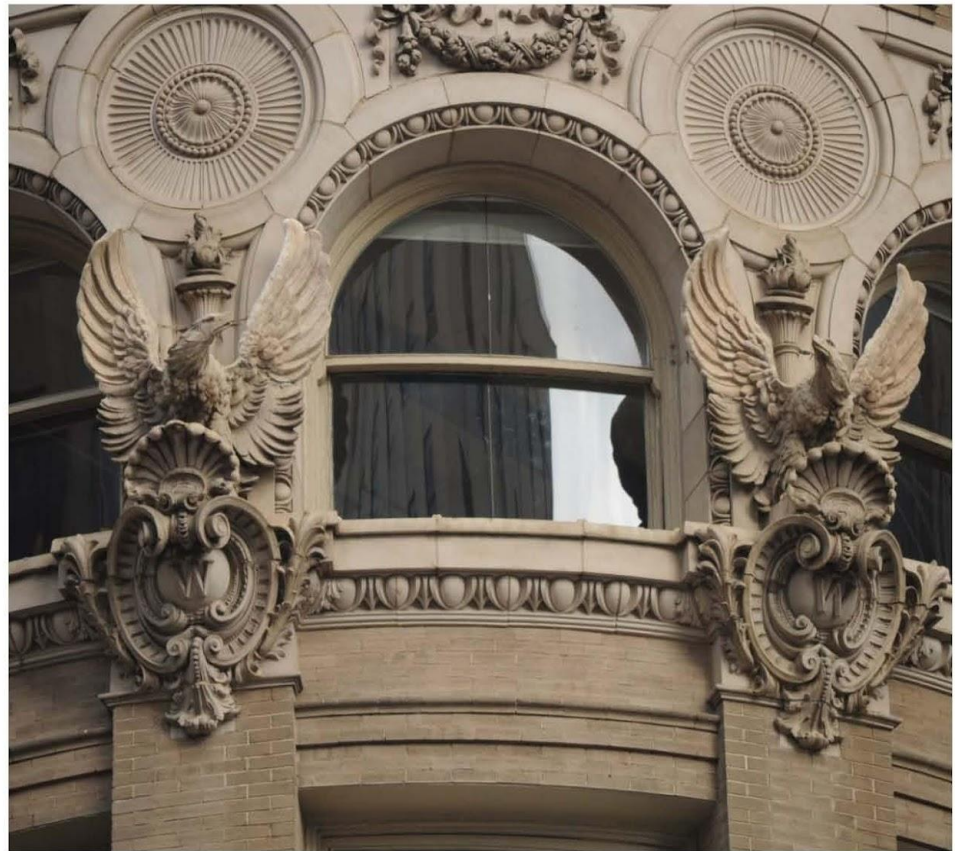
Source: http://pilisvorosvar.hu/vorosvariuisag-regi/2011/augusztus/images/vorosvariuisag_69.jpg; [http://www.eikongraphia.com/wordpress/wp-content/Budapest%20augustus%202007%20Michiel%20\(3\)%20small.jpg](http://www.eikongraphia.com/wordpress/wp-content/Budapest%20augustus%202007%20Michiel%20(3)%20small.jpg); http://mno.hu/data/cikk/1/25/56/68/cikk_1255668/Erdelyi_Portrait_of_Imre_Steindl.jpg

**19.6 The Yaroslavl Railway station (reconstruction), Moscow, Russia, 1904
(Arch. Fedor O.Shekhtel')**



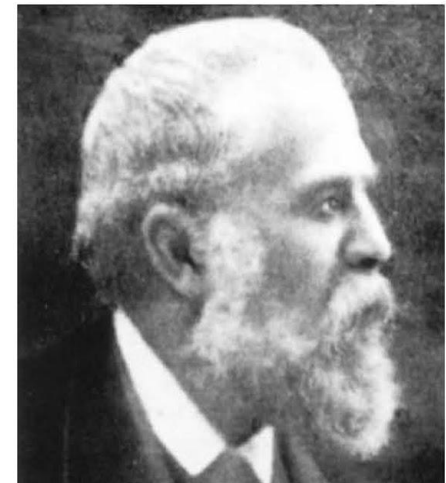
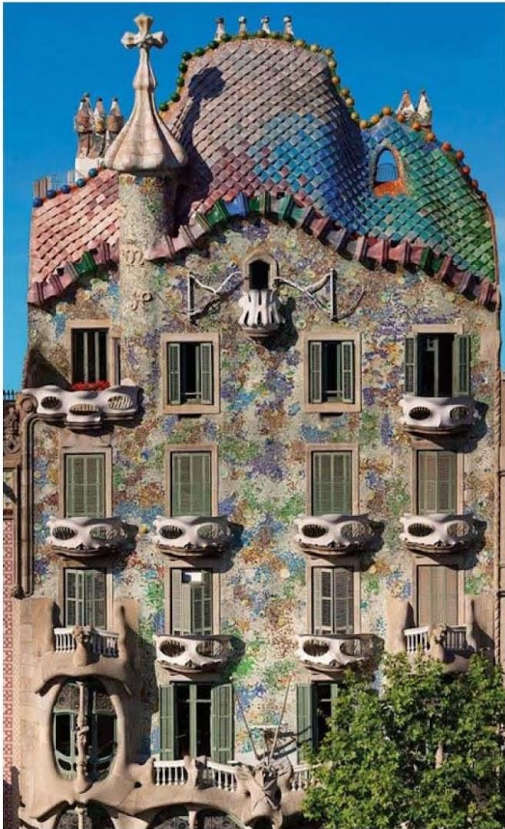
Source: http://www.5arts.info/wp-content/uploads/2013/08/modern_yaroslavskii_vokzal.jpg ; http://privetstudent.com/uploads/posts/2013-07/thumbs/1372928424_untitled.fr11-46.jpg ; https://upload.wikimedia.org/wikipedia/commons/thumb/4/4d/Fedor_Shekhtel_1890th.jpg/220px-Fedor_Shekhtel_1890th.jpg

19.7 The Wilson Building, Dallas, Texas, USA, 1904 (Arch. A. Watson, "Sanguinet & Staats")



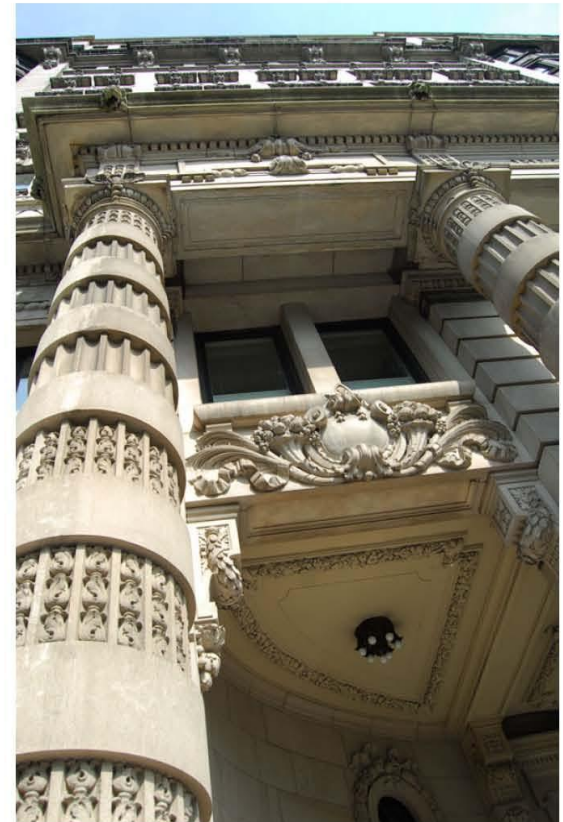
Source: <http://f.tqn.com/y/architecture/1/S/2/Q/1/dallas-wilson.jpg> ; [https://upload.wikimedia.org/wikipedia/commons/b/b4/Dallas - Wilson Building_detail_01.jpg](https://upload.wikimedia.org/wikipedia/commons/b/b4/Dallas_-_Wilson_Building_detail_01.jpg) ;
http://3.bp.blogspot.com/_rZmbDd3iio/TNWmJrJ7WYI/AAAAAAAAAgw/9taENwV8Rqc/s1600/DSC01287.JPG

19.8 The Casa Batlló / Casa dels ossos (House of Bones), Barcelona, Spain, 1907 (Arch. Antoni Plàcid Guillem Gaudí i Cornet)



Source: <https://www.casabatlo.es/wp-content/uploads/2013/07/casa-batlo-facade.jpg> ; <http://www.placestoseeinyourlifetime.com/wp-content/uploads/2013/04/Casa-Batl%C3%B3-Barcelona-Spain-11-740x536.jpg> ; https://upload.wikimedia.org/wikipedia/commons/b/ba/Gaud%C3%AD_%281910%29.jpg ; <https://happyinspain.com/assets/uploads/2014/06/casa-batlo-in-barcelona.jpg> ; http://images.placesonline.com/photos/19485_barcellona_scorcio_del_terrazzo_di_casa_batlo.jpg

19.9 The Apartment (The Prasada), New-York, USA, 1907 (Arch. Charles W.Romeyn and Henry R.Wynne)



Source: <http://cdn-img0.streeteasy.com/nyc/image/84/18703084.jpg> ; <http://onthesetofnewyork.com/locations/threemenandababy/threemenandababy10.jpg> ;
http://kwnyc.com/images/assets/24288_22834.jpg ; <https://ds3.cityreality.com/img/c4a8d89c47c59eb3f14dfe27995e701fa2b94b5f+736++0+60/the-prasada-50-central-park-west-04.jpg> ;
http://assets.stribling.com/images/floorplan/image/1870/8547993_50_CPW_Floor_Plan-WEB.jpg

**19.10 The Grand Post Office / Büyük Postane, Istanbul, Turkey, 1909
(Arch. Mehmet Vedat Tek)**



Source: <http://www.byzantiumistanbul.com/dosya/buyuk/9193549.JPG> ; https://irs0.4sqi.net/ima/general/600x600/5672801_Xin4TqBel3naut12cG9eJNz9Ui221JSH500FvhSCY8.jpg ; http://img.blogcu.com/uploads/sonmimar_vedat_tek1B.jpg

Recommended educational and scientific-theoretical sources:

1. *The General History of Architecture. In 2 volumes. = Всеобщая история архитектуры. В 2 томах. Гл. ред. Б.П. Михайлов. Том II. - Москва: Гос. Изд. лит. по стр., арх. и стр. мат., 1963. - 724 с.*
2. *The General History of Architecture. In 12 volumes. Volume 10: Architecture of the XIX - early XX centuries. = Всеобщая история архитектуры. В 12 томах. Том 10: Архитектура XIX - начала XX вв. / Под редакцией С. О. Хан-Магомедова (ответственный редактор), П.Н. Максимова, Ю. Ю. Савицкого. - 1972. - 592 с.*
3. *Hungarian Parliament Building / From Wikipedia, the free encyclopedia. - https://en.wikipedia.org/wiki/Hungarian_Parliament_Building*
4. *Нащокина М. В. Архитекторы московского модерна. Творческие портреты. - Издание 3-е. - Москва: Жираф, 2005.*
5. *Рижский вокзал / Материал из Википедии — свободной энциклопедии. - https://ru.wikipedia.org/wiki/Рижский_вокзал*
6. *Ярославский вокзал / Материал из Википедии — свободной энциклопедии. - https://ru.wikipedia.org/wiki/Ярославский_вокзал.*
7. *Шехтель, Фёдор Осипович / Материал из Википедии — свободной энциклопедии. - https://ru.wikipedia.org/wiki/Шехтель,_Фёдор_Осипович*
8. *Casa Batlló / From Wikipedia, the free encyclopedia. - https://en.wikipedia.org/wiki/Casa_Batlló*

Briefly about the Author



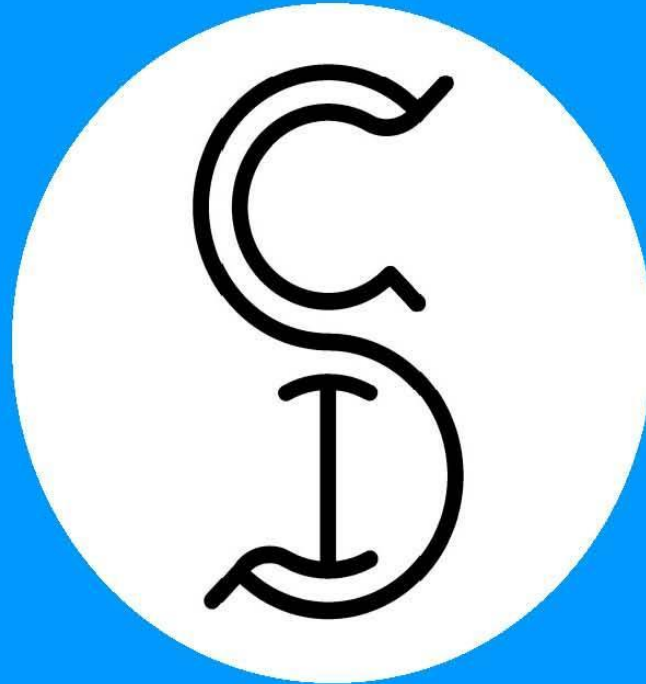
Konstantin I.SAMOILOV

High Doctorate (Arch) – 2008,
Doctor of Sciences (Arch) – 2004,
Candidate of Sciences / eq. PhD(Arch) – 1990,
Dipl.Arch. / eq. MArch – 1983,
Dipl.Tech.Arch. / eq. BArch – 1977



Associate Professor of the Architectural Faculty –
Kazakh Leading Academy of Architecture and Civil Engineering –
www.kazgasa.kz

E: samconiv@yahoo.com , samconiv@mail.ru



THE HISTORY OF ARCHITECTURE FROM PREHISTORIC TO MODERN TIMES:
Albums of characteristic examples for the Educational course / by Dr. Konstantin I.Samoilov. –
The nineteenth Album: THE WORLD'S ARCHITECTURE OF THE 1900's. – Almaty, 2017. – 18 p.