

THE HISTORY OF ARCHITECTURE

FROM PREHISTORIC TO MODERN TIMES



**The twenty seventh Album:
THE WORLD'S ARCHITECTURE
OF THE 1980's**



Albums of characteristic examples for the Educational course
by Dr. Konstantin I.Samoilov
Almaty, 2017

This series of albums generated for information purposes of the Educational course "The General History of Architecture": 2 credits / 30 hours of lectures.

Until the 1980's, examples are grouped by region. In this period, the phenomenon of a single world architectural process begins to manifest itself. Since the 1980's, examples have been grouped by decades.

Thirty albums illustrate the following topics:

- the 1st Album: EDUCATIONAL AND SCIENTIFIC-THEORETICAL SOURCES
- the 2nd Album: THE PREHISTORIC ERA'S ARCHITECTURE
- the 3rd Album: THE ANCIENT EGYPTIAN ARCHITECTURE
- the 4th Album: THE ANCIENT MESOPOTAMIAN ARCHITECTURE
- the 5th Album: THE ANCIENT GREEK ARCHITECTURE
- the 6th Album: THE ANCIENT ROMAN ARCHITECTURE
- the 7th Album: THE MEDIEVAL EUROPEAN ARCHITECTURE
- the 8th Album: THE EUROPEAN RENAISSANCE'S ARCHITECTURE
- the 9th Album: THE MEDIEVAL MAGHREB'S, THE NEAR EASTERN AND THE CAUCASUS'S ARCHITECTURE
- the 10th Album: THE MEDIEVAL CENTRAL ASIAN ARCHITECTURE
- the 11th Album: THE ANCIENT AND MEDIEVAL CHINESE ARCHITECTURE
- the 12th Album: THE MEDIEVAL SOUTHEASTERN AND EASTERN ASIAN ARCHITECTURE
- the 13th Album: THE MEDIEVAL CENTRAL AMERICAN ARCHITECTURE
- the 14th Album: THE EASTERN EUROPE MIDDLE AGES AND NEW TIMES ARCHITECTURE
- the 15th Album: THE WESTERN EUROPEAN AND THE NORTH AMERICAN NEW TIMES ARCHITECTURE

- the 16th Album: THE WORLD'S ARCHITECTURE OF THE 1870's
- the 17th Album: THE WORLD'S ARCHITECTURE OF THE 1880's
- the 18th Album: THE WORLD'S ARCHITECTURE OF THE 1890's
- the 19th Album: THE WORLD'S ARCHITECTURE OF THE 1900's
- the 20th Album: THE WORLD'S ARCHITECTURE OF THE 1910's
- the 21st Album: THE WORLD'S ARCHITECTURE OF THE 1920's
- the 22nd Album: THE WORLD'S ARCHITECTURE OF THE 1930's
- the 23rd Album: THE WORLD'S ARCHITECTURE OF THE 1940's
- the 24th Album: THE WORLD'S ARCHITECTURE OF THE 1950's
- the 25th Album: THE WORLD'S ARCHITECTURE OF THE 1960's
- the 26th Album: THE WORLD'S ARCHITECTURE OF THE 1970's
- **the 27th Album: THE WORLD'S ARCHITECTURE OF THE 1980's**
- the 28th Album: THE WORLD'S ARCHITECTURE OF THE 1990's
- the 29th Album: THE WORLD'S ARCHITECTURE OF THE 2000's
- the 30th Album: THE WORLD'S ARCHITECTURE OF THE 2010's

Examples are distributed in chronological order of the construct completion.

Images sources are indicated directly near with illustrations on each page.

Architects and companies listed on the basis of aggregate data from different sources (objects from various sources indicate different authors). About some buildings listed authors available sources has not yet been found.

The Author expresses his gratitude to Internet resources – <https://www.google.com> ; <https://www.wikipedia.org> – which to provide the ability to collect an information.

The 27th Album's front cover:

The AT&T World Headquarters / 550 Madison Avenue, New York city, USA, 1984 (Arch. Philip Cortelyou Johnson, John Burgee - "Johnson / Burgee Architects") - http://arch-grafika.ru/_pu/0/26946620.jpg; <http://www.nyc-architecture.com/MID/MID037-att.chip.top.jpg>

The Central Research Institute of Robotics and Technical Cybernetics, Leningrad, USSR, 1987 (Arch. Boris I. Artiushin, Stanislav V. Savin) - <http://fofoi.ru/wp-content/uploads/2014/09/nii.jpg>

The "La Grande Arche de la Fraternité" office building / the "La Grande Arche de la Défense", Paris, France, 1989 (Arch. Johan Otto von Spreckelsen, Paul Andreu) - <http://www.movingvan.ru/wp-content/uploads/2013/11/La-Grande-Arche-La-Defense-Paris.jpg>

The "Louvre Pyramid" Louvre's entrance pavilion, Paris, France, 1989 (Arch. Ieoh Ming Pei) - http://comments.ua/images/Louvre_shutterstock_4700979_1.jpg

Purpose of the 27th Lecture:

To study the basic features of the World architecture in 1980's.

Tasks of the 27th Lecture:

- To consider characteristic examples of specifically organized spaces and buildings;
- To accentuate the features of construction depending on the availability of building materials;
- To emphasize the difference between cult and dwelling buildings.

Tasks for the self-research work:

1. Study the change in the nomenclature of buildings and structures during the evolution of the 1980's Architecture.
2. Analyze geometric parameters of main types of structures and buildings.

Questions for the self-preparation:

1. Accentuate the features of the USA's 1980's architecture
2. Accentuate the features of the European 1980's architecture

Themes of abstracts (16 pages, 40 000 characters, A4 format):

1. The evolution of the Chinese 1980's Architecture
2. The evolution of the French 1980's Architecture
3. The evolution of the USSR's 1980's Architecture

Examples for the 27th Lecture:

- 27.1 "Follies", the Parc de la Villette, Paris, France, 1982 (Arch. Bernard Tschumi)
- 27.2 The Minsk State Polytechnic Institute Architectural faculty building / the BNTU's 15th building, Minsk, Belarus, USSR, 1983 (Arch. Igor I. Es'man, Victor I. Anikin – "Minskproekt")
- 27.3 The AT&T World Headquarters / 550 Madison Avenue, New York city, USA, 1984 (Arch. Philip Cortelyou Johnson, John Burgee - "Johnson / Burgee Architects")
- 27.4 The "Arènes de Picasso" dwelling houses complex, Noisy-le-Grand, France, 1985 (Arch. Manuel Nuñez Yanowsky)
- 27.5 The "Les Echelles du Baroque" residential building complex, Paris, France, 1985 (Arch. Ricardo Bofill Leví - "Ricardo Bofill Taller de Arquitectura")
- 27.6 The HSBC Main Building, Hong Kong, China, 1985 (Arch. Norman Robert Foster – "Foster + Partners")
- 27.7 The Central Research Institute of Robotics and Technical Cybernetics, Leningrad, USSR, 1987 (Arch. Boris I. Artiushin, Stanislav V. Savin)
- 27.8 The Asahi Beer Hall / the Flamme d'Or, Tokyo, Japan, 1989 (Arch. Philippe Starck)
- 27.9 The "La Grande Arche de la Fraternité" office building / the "La Grande Arche de la Défense", Paris, France, 1989 (Arch. Johan Otto von Spreckelsen, Paul Andreu)
- 27.10 The "Louvre Pyramid" Louvre's entrance pavilion, Paris, France, 1989 (Arch. Ieoh Ming Pei)

27.1 "Follies", the Parc de la Villette, Paris, France, 1982 (Arch. Bernard Tschumi)



Source: <https://benleavitt.files.wordpress.com/2012/08/20083565.jpeg> ; <http://rcoyne99.files.wordpress.com/2011/02/screen-shot-2011-02-12-at-17-42-351.png?w=750> ;
<http://img.groundspeak.com/waymarking/log/a3b6f3eb-9ae1-4f85-8f5c-77f444bad3b1.jpg> ; http://spc.fotolog.com/photo/44/29/75/heydude89/1197648272_f.jpg ;
<http://graphics8.nytimes.com/images/2008/06/04/timestopics/Tschumi-395.jpg>

27.2 The Minsk State Polytechnic Institute Architectural faculty building / the BNTU's 15th building, Minsk, Belarus, USSR, 1983 (Arch. Igor I.Es'man, Victor I.Anikin – “Minskproekt”)



Source.: <http://vignette2.wikia.nocookie.net/eminsk/images/ffc/15%D0%91%D0%9D%D0%A2%D0%A3.jpg/revision/latest?cb=20110307154320&path-prefix=ru> ;
<http://gallery.minsklife.com/up/gallery/bntu15.jpg> ; http://farm2.static.flickr.com/1248/1403448578_0a4a28d9c0_o.jpg ; <http://www.kp.ru/f/12/image/86/93/2109386.jpg> ;
<http://ais.by/ites/ais.by/files/2013/201301/Anikin.jpg>

**27.3 The AT&T World Headquarters / 550 Madison Avenue, New York city, USA, 1984
(Arch. Philip Cortelyou Johnson, John Burgee - "Johnson / Burgee Architects")**



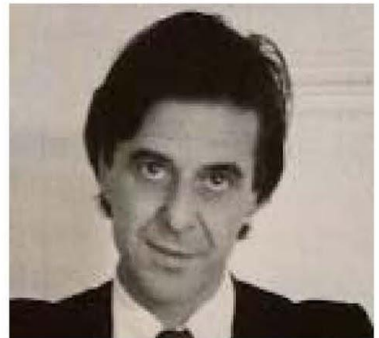
Source: <http://arch-grafika.ru/pu/0/26946620.jpg>; <http://www.nyc-architecture.com/MID/MID037-att.chip.top.jpg> ;
https://upload.wikimedia.org/wikipedia/commons/thumb/1/1f/Sony_Building_by_Matthew_Bisanz.jpg/220px-Sony_Building_by_Matthew_Bisanz.jpg ;
<http://forgotten-ny.com/wp-content/uploads/2012/06/52.madison.e55-506x380.jpg>; <http://1.alamy.com/thumbs/4/ed681534-15b9-4ae0-b3b4-1c02cc953c85/AJ712C.jpg>

27.4 The "Arènes de Picasso" dwelling houses complex, Noisy-le-Grand, France, 1985 (Arch. Manuel Nuñez Yanowsky)



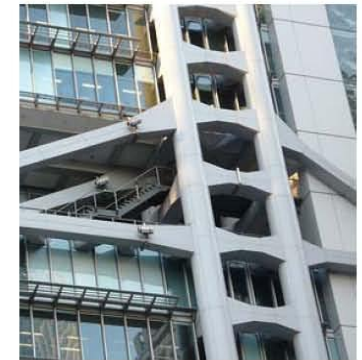
Source: <https://s-media-cache-ak0.pinimg.com/736x/ea/00/16/ea00160d6008d80aa40bd7c228bf33b2.jpg>; <http://flavorwire.files.wordpress.com/2012/01/picasso-bing2-copie.jpg>;
<http://footage.framepool.com/shotimg/qf/316099817-les-arenes-de-picasso-manolo-nunez-yanowsky-marne-la-vallee-postmodernism-architecture.jpg>;
<https://architectsbyp Photographers.files.wordpress.com/2013/06/nunez-par-beaufre.jpg?w=433&h=680>

27.5 The "Les Echelles du Baroque" residential building complex, Paris, France, 1985 (Arch. Ricardo Bofill Leví - "Ricardo Bofill Taller de Arquitectura")



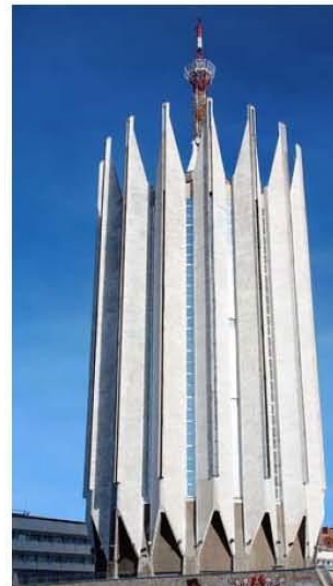
Source: https://res.cloudinary.com/homifv/a_0_c_fit_q_70_w_554/v1438320449/p/photo/image/215814/Les_Echelles_du_Baroque_Paris_France_Ricardo_Bofill_Taller_Arquitectura_14.jpg; http://archcase.com/wp-content/uploads/2014/09/Les_Echelles_du_Baroque_Paris_France_Ricardo_Bofill_Taller_Arquitectura_12.jpg; http://us.archello.com/sites/default/files/imagecache/header_detail_large/LesEchellesduBaroqueParisFranceRicardoBofillTal_0.jpg; <http://2.bp.blogspot.com/-BMyp03jh4Y8/UFsNN7zW5-I/AAAAAAAAADHq/MiKIHhJD7IQ/s640/Ricardo+Bofill+-+Maquette+Echelles+du+Baroque+-+Paris+-+1985.jpg>

27.6 The HSBC Main Building, Hong Kong, China, 1985 (Arch. Norman Robert Foster – "Foster + Partners")



Source: [http://legacy.skyscrapercenter.com/class-image.php/userpics/10005/?width=1000&height=800&image=/images/albums/userpics/10005/HSBC_Ext_Aerial2_\(c\)TerriMeyerBoake.jpg](http://legacy.skyscrapercenter.com/class-image.php/userpics/10005/?width=1000&height=800&image=/images/albums/userpics/10005/HSBC_Ext_Aerial2_(c)TerriMeyerBoake.jpg) ;
https://c1.staticflickr.com/5/4093/4771188849_a5b18ec9e6.jpg ; <http://cache3.asset-cache.net/gc/490680661-the-hsbc-holdings-plc-headquarters-left-and-gettyimages.jpg?v=1&c=IWSAsset&k=2&d=X7VVJLa88Cweo9HktRLaNxivUlGpmqYDGcq3bnU4viRP0MmmrD1mx7oxyAcRGyHoFOmPw%2FqLyowRKMF5E5BfieA%3D%3D> ;
<http://www.hkchcc.org/normanfoster1.jpg>

27.7 The Central Research Institute of Robotics and Technical Cybernetics, Leningrad, USSR, 1987 (Arch. Boris I.Artiushin, Stanislav V.Savin)



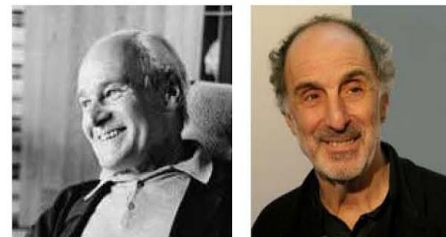
Source: <http://fofoi.ru/wp-content/uploads/2014/09/nii.jpg> ; http://i41.sobaka.ru/images/image/00/60/06/11/_normal.jpg ; http://p2.citwalls.ru/photo_37-38738.jpg?mt=1273625807 ; <https://encrypted-tbn2.gstatic.com/images?q=tbn:ANd9GcTDRi6TNnJY1I51VGDRlqzvXvVJB7qHKfuHJN9RiccPDULK6hda> ; http://img-fotki.vandex.ru/get/9165/51667439_41a/0_e5c2b_9debe490_L.jpg

27.8 The Asahi Beer Hall / the Flamme d'Or, Tokyo, Japan, 1989 (Arch. Philippe Starck)



Source: [https://upload.wikimedia.org/wikipedia/commons/b/b1/Skytree %26 Asahi Breweries Building, from Azumabashi, Asakusa 2012 %E2%85%A2.JPG](https://upload.wikimedia.org/wikipedia/commons/b/b1/Skytree_%26_Asahi_Breweries_Building_from_Azumabashi,_Asakusa_2012_%E2%85%A2.JPG); https://c1.staticflickr.com/3/2635/3754008518_c504bfc76.jpg; http://pure.imm-cologne.com/wp-content/uploads/2010/11/VDS_T05_0507.jpg

27.9 The "La Grande Arche de la Fraternité" office building / the "La Grande Arche de la Défense", Paris, France, 1989 (Arch. Johan Otto von Spreckelsen, Paul Andreu)



Source: <http://www.movingvan.ru/wp-content/uploads/2013/11/La-Grande-Arche-La-Defense-Paris.jpg> ; <http://2.bp.blogspot.com/-CT196gEPadA/ULZuluDU5al/AAAAAAAAAB7A/bAEEn1USx3E/s1600/Grande-Arche.jpg> ; http://mycoweb2.narod.ru/Submitted/SJG/6Paris_Grande_Arche_Defense.jpg ; http://image2.findagrave.com/photos/2006/298/16329892_116187109241.jpg ; <http://i.archi.ru/i/650/5697.jpg>

**27.10 The "Louvre Pyramid" Louvre's entrance pavilion, Paris, France, 1989
(Arch. Ieoh Ming Pei)**



Source: http://comments.ua/images/Louvre_shutterstock_4700979_1.jpg ; <https://youraudioguide.com/photo2/c/606/404/f66c90bbda19aca0f1f7c29167cb0614.jpg> ;
http://www.terra-z.ru/wp-content/uploads/2014/08/01_B23_LA-PYRAMIDE-DU-LOUVRE.jpg ; http://www.architectsjournal.co.uk/pictures/636xAny/1/2/9/1219129_PORTRAIT2CREDIT_victor_orlewicz.jpg

Recommended educational and scientific-theoretical sources:

1. *Architecture and Disjunction* / by Bernard Tschumi. - The MIT Press, 1996
2. *Ikonnikov A.V. Architecture of the twentieth century: Utopias and reality.* = Иконников А.В. Архитектура XX века: Утопии и реальность. – т.1. – Москва: Прогресс-Традиция, 2001.
3. *Bernard Tschumi* / From Wikipedia, the free encyclopedia. - URL: https://en.wikipedia.org/wiki/Bernard_Tschumi
4. *Parc de la Villette* / From Wikipedia, the free encyclopedia. - URL: https://en.wikipedia.org/wiki/Parc_de_la_Villette
5. Как лайнер в океане ... / Людмила Захарова. - Республиканская строительная газета № 9 (606). - 09.03.2015. - URL: <http://arcp.by/ru/article/kak-layner-v-okeane>
6. *Manuel Núñez Yanowsky* / From Wikipedia, the free encyclopedia. - URL: https://fr.wikipedia.org/wiki/Manuel_Núñez_Yanowsky
7. *Arènes de Picasso* / From Wikipedia, the free encyclopedia. - URL: https://fr.wikipedia.org/wiki/Arènes_de_Picasso
8. *RBTA - Ricardo Bofill Taller de Arquitectura.* - URL: <http://www.ricardobofill.es>
9. *Ricardo Bofill Taller de Arquitectura* / From Wikipedia, the free encyclopedia. - URL: https://en.wikipedia.org/wiki/Ricardo_Bofill_Taller_de_Arquitectura
10. *Ricardo Bofill* / From Wikipedia, the free encyclopedia. - https://en.wikipedia.org/wiki/Ricardo_Bofill
11. *Les Échelles du Baroque* / From Wikipedia, the free encyclopedia. - URL: https://en.wikipedia.org/wiki/Les_Échelles_du_Baroque
12. *Norman Foster, Baron Foster of Thames Bank* / From Wikipedia, the free encyclopedia. - URL: https://en.wikipedia.org/wiki/Norman_Foster,_Baron_Foster_of_Thames_Bank
13. *HSBC Building (Hong Kong)* / From Wikipedia, the free encyclopedia. - URL: [https://en.wikipedia.org/wiki/HSBC_Building_\(Hong_Kong\)](https://en.wikipedia.org/wiki/HSBC_Building_(Hong_Kong))
14. *Foster and Partners* / From Wikipedia, the free encyclopedia. - URL: https://en.wikipedia.org/wiki/Foster_and_Partners
15. ЦНИИ робототехники и технической кибернетики / Материал из Википедии - свободной энциклопедии. - URL: https://ru.wikipedia.org/wiki/ЦНИИ_робототехники_и_технической_кибернетики
16. Ленинград. ЦНИИ ПТК. 1973-87. - Oct. 16th, 2013. -URL: <http://ru-sovarch.livejournal.com/759945.html>
17. *Asahi Beer Hall* / From Wikipedia, the free encyclopedia. - URL: https://en.wikipedia.org/wiki/Asahi_Beer_Hall
18. *Philippe Starck* / From Wikipedia, the free encyclopedia. - URL: https://en.wikipedia.org/wiki/Philippe_Starck
19. *Grande Arche* / From Wikipedia, the free encyclopedia. - URL: https://en.wikipedia.org/wiki/Grande_Arche
20. *Johan Otto von Spreckelsen* / From Wikipedia, the free encyclopedia. - URL: https://en.wikipedia.org/wiki/Johan_Otto_von_Spreckelsen
21. *Paul Andreu* / From Wikipedia, the free encyclopedia. - URL: https://en.wikipedia.org/wiki/Paul_Andreu
22. *I.M.Pei* / From Wikipedia, the free encyclopedia. - URL: https://en.wikipedia.org/wiki/I._M._Pei
23. *Louvre Pyramid* / From Wikipedia, the free encyclopedia. - URL: https://en.wikipedia.org/wiki/Louvre_Pyramid

Briefly about the Author



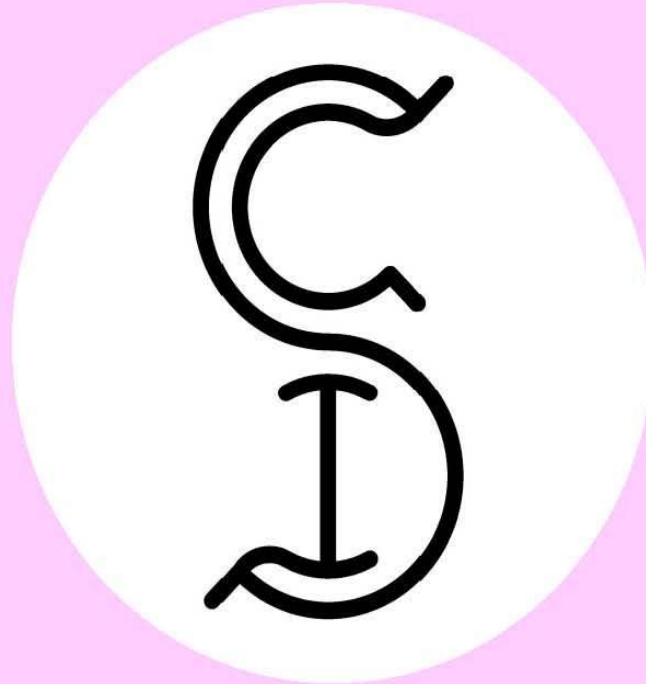
Konstantin I.SAMOILOV

High Doctorate (Arch) – 2008,
Doctor of Sciences (Arch) – 2004,
Candidate of Sciences / eq. PhD(Arch) – 1990,
Dipl.Arch. / eq. MArch – 1983,
Dipl.Tech.Arch. / eq. BArch – 1977



Associate Professor of the Architectural Faculty –
Kazakh Leading Academy of Architecture and Civil Engineering –
www.kazgasa.kz

E: samconiv@yahoo.com , samconiv@mail.ru



THE HISTORY OF ARCHITECTURE FROM PREHISTORIC TO MODERN TIMES:
Albums of characteristic examples for the Educational course / by Dr. Konstantin I.Samoilov. –
The twenty seventh Album: THE WORLD'S ARCHITECTURE OF THE 1980's. – Almaty, 2017. – 18 p.