



**Кино с 1909 по 1920-й:  
годы волшебных  
превращений.**









H. Brispot





*The Supreme Picture of All Time*



*The* BIRTH OF A NATION

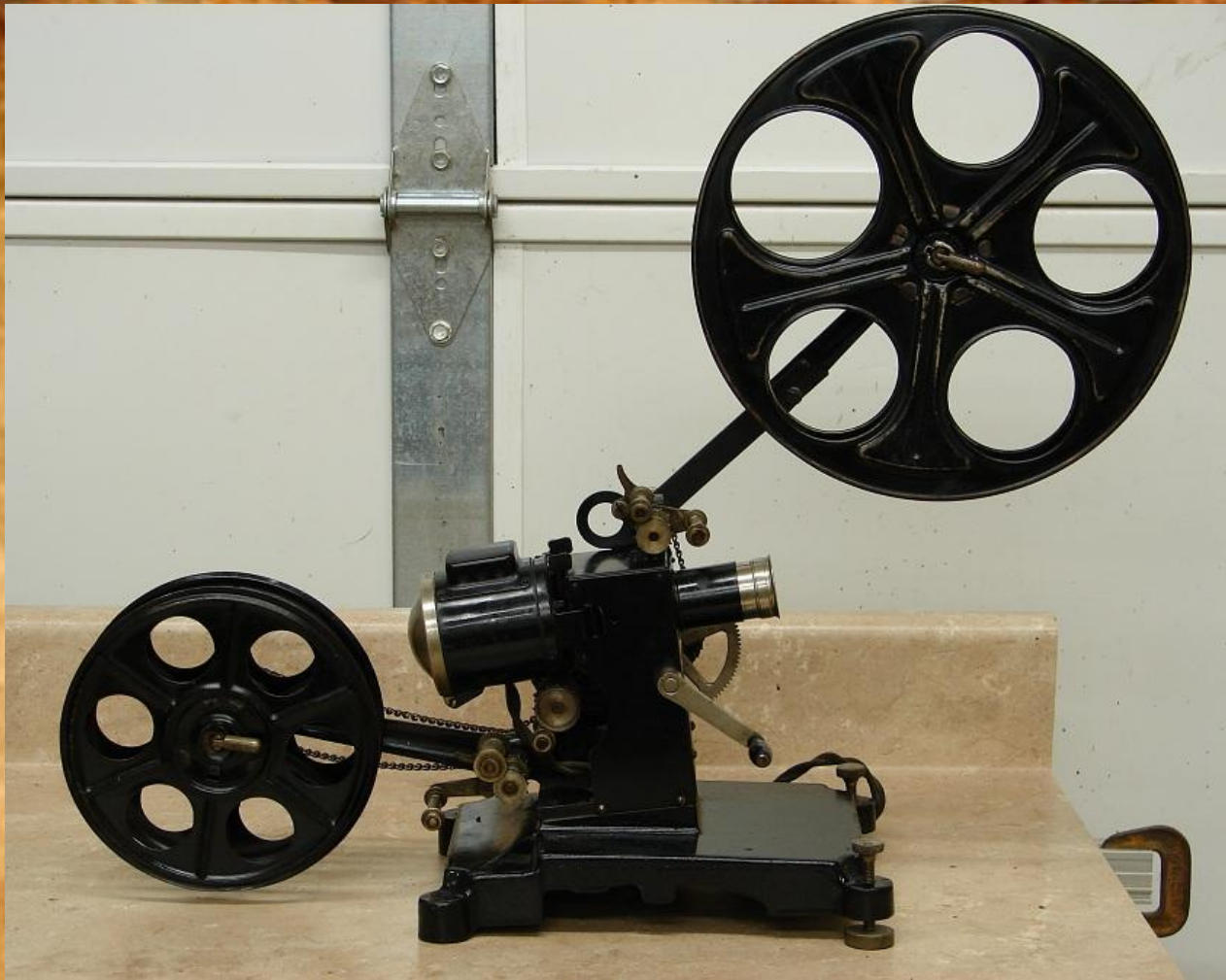


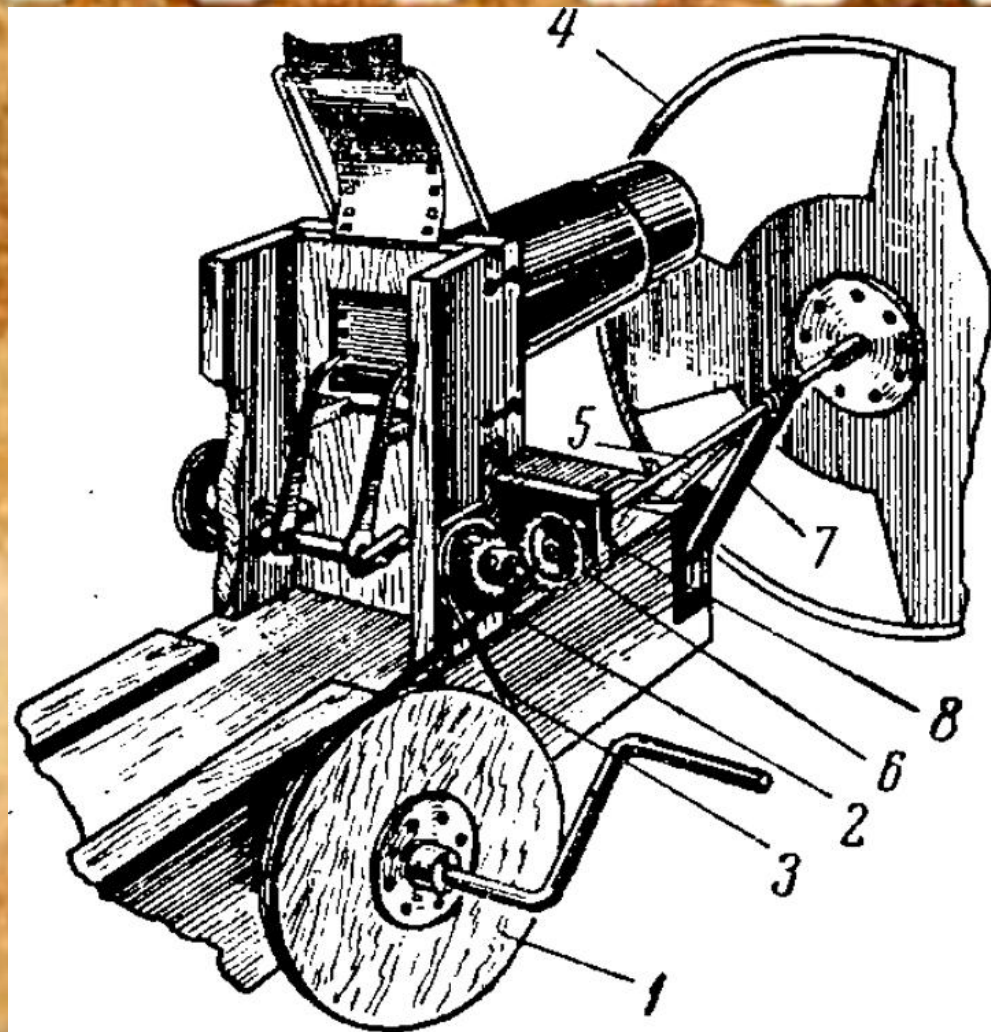


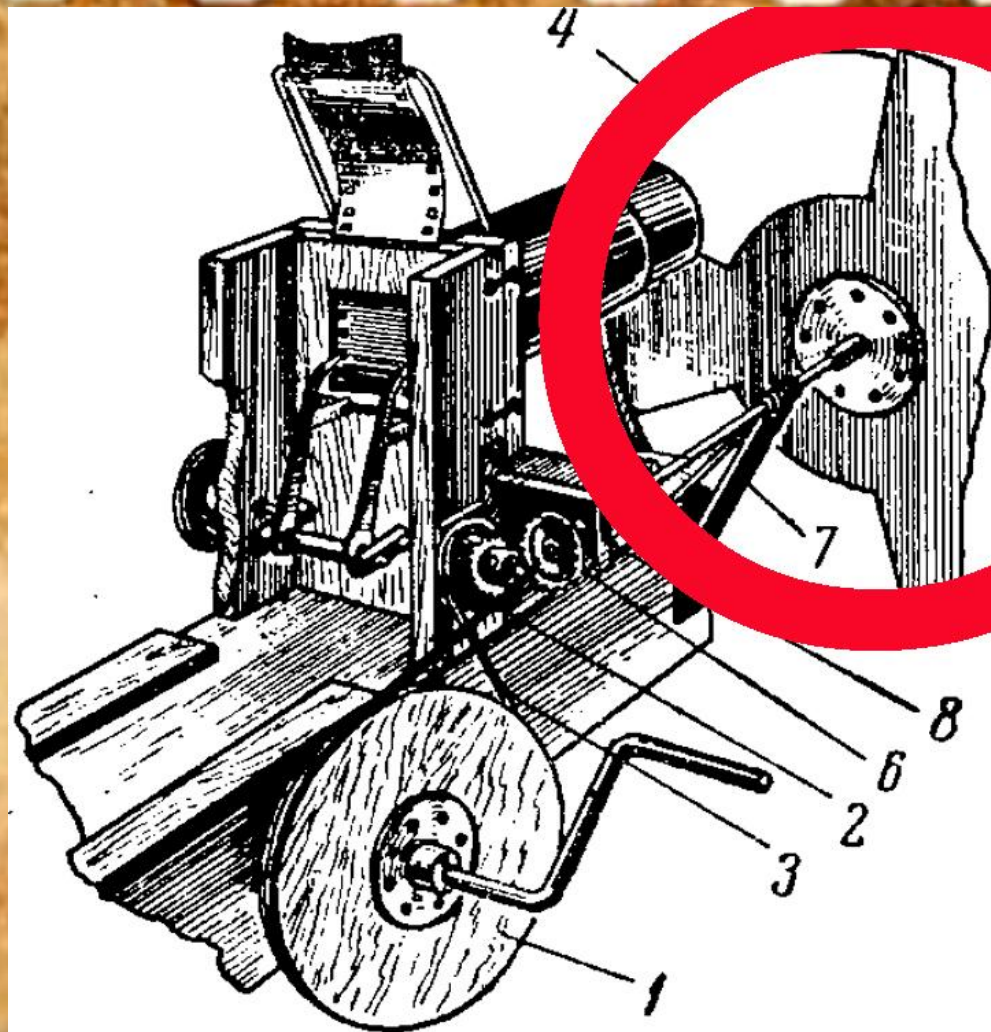


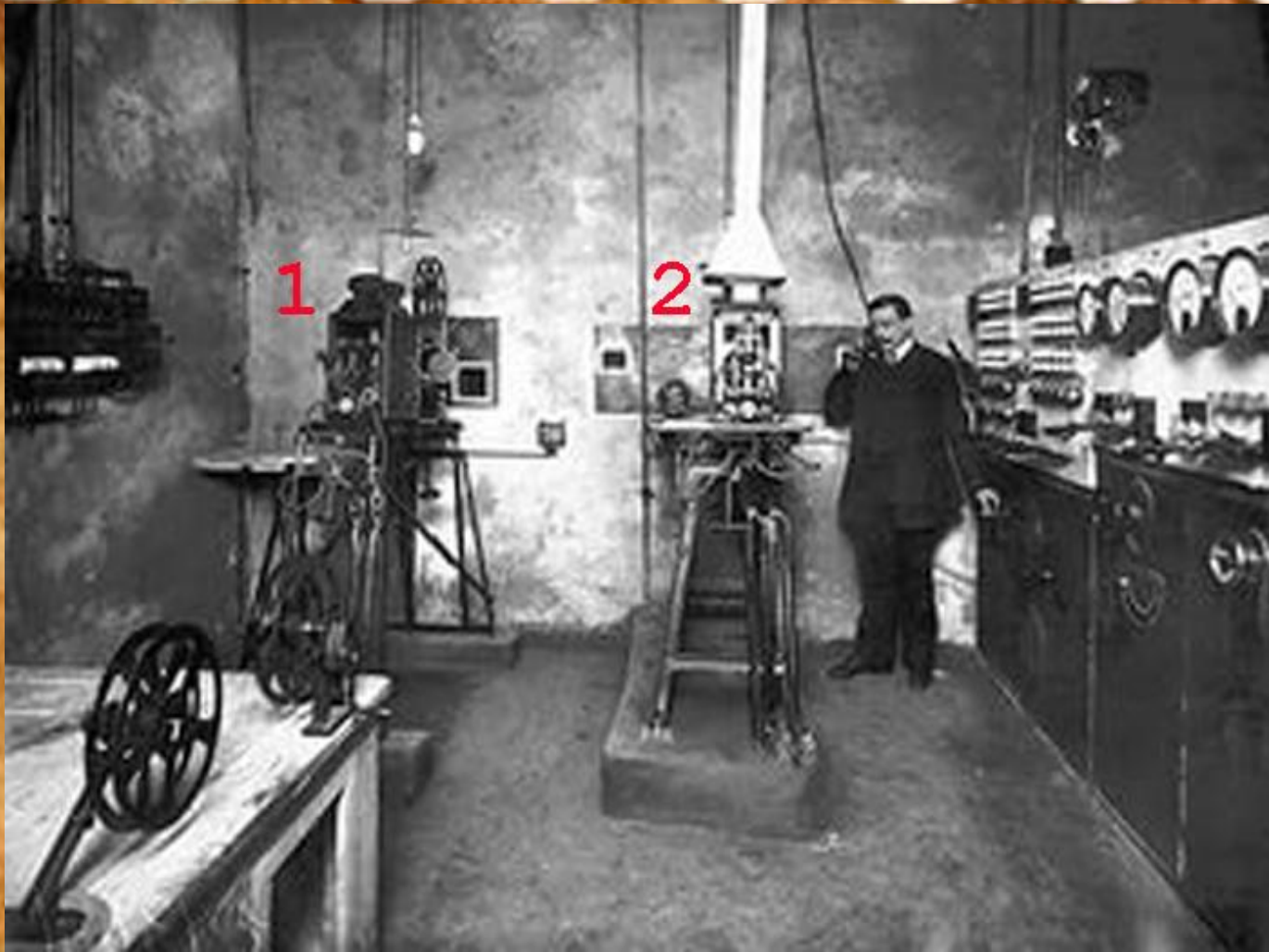














# LES MISÉRABLES

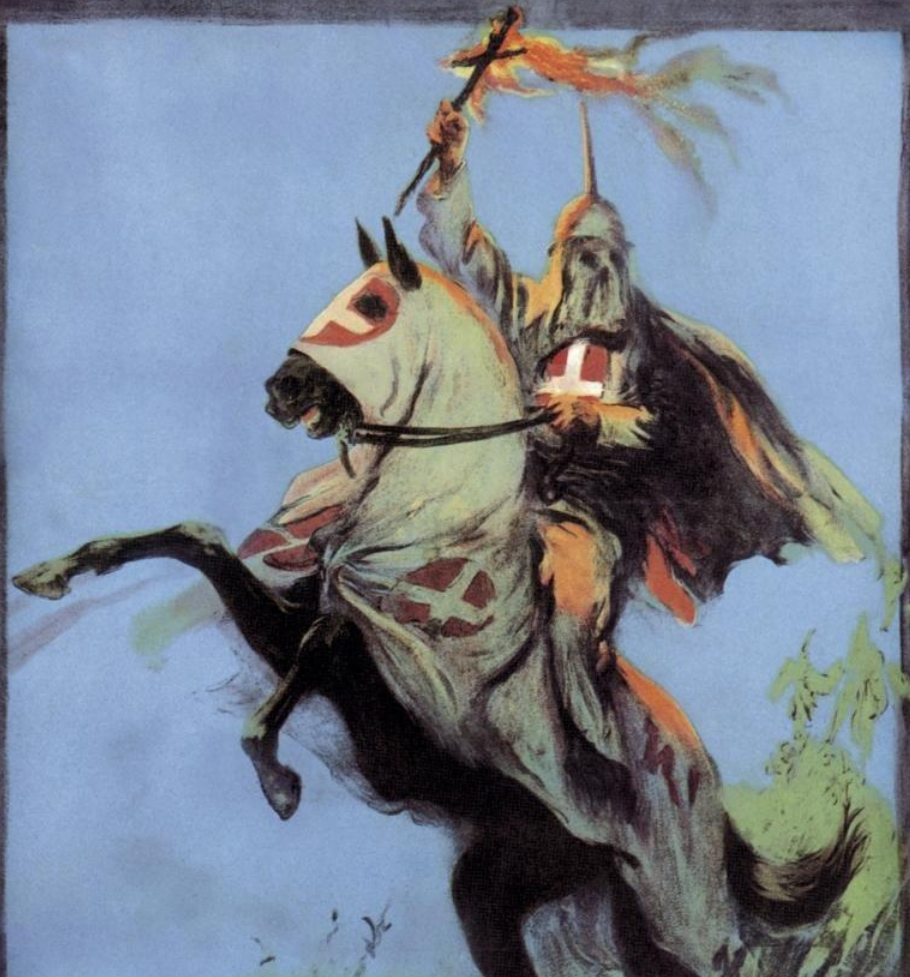
D'après l'immortel Chef d'Œuvre de VICTOR HUGO



SCENARI

THEATRE DE LA VILLE

RETOUR ET VENTE AU PAYS ET A L'ÉTRANGER APRÈS VENTE EN FRANCE PAR LA SOCIÉTÉ GÉNÉRALE



- THE FIERY CROSS OF THE KU KLUX KLAN -

D.W. GRIFFITH'S MIGHTY SPECTACLE  
**THE BIRTH OF A NATION**  
FOUNDED ON THOMAS DIXON'S 'THE CLANSMAN'

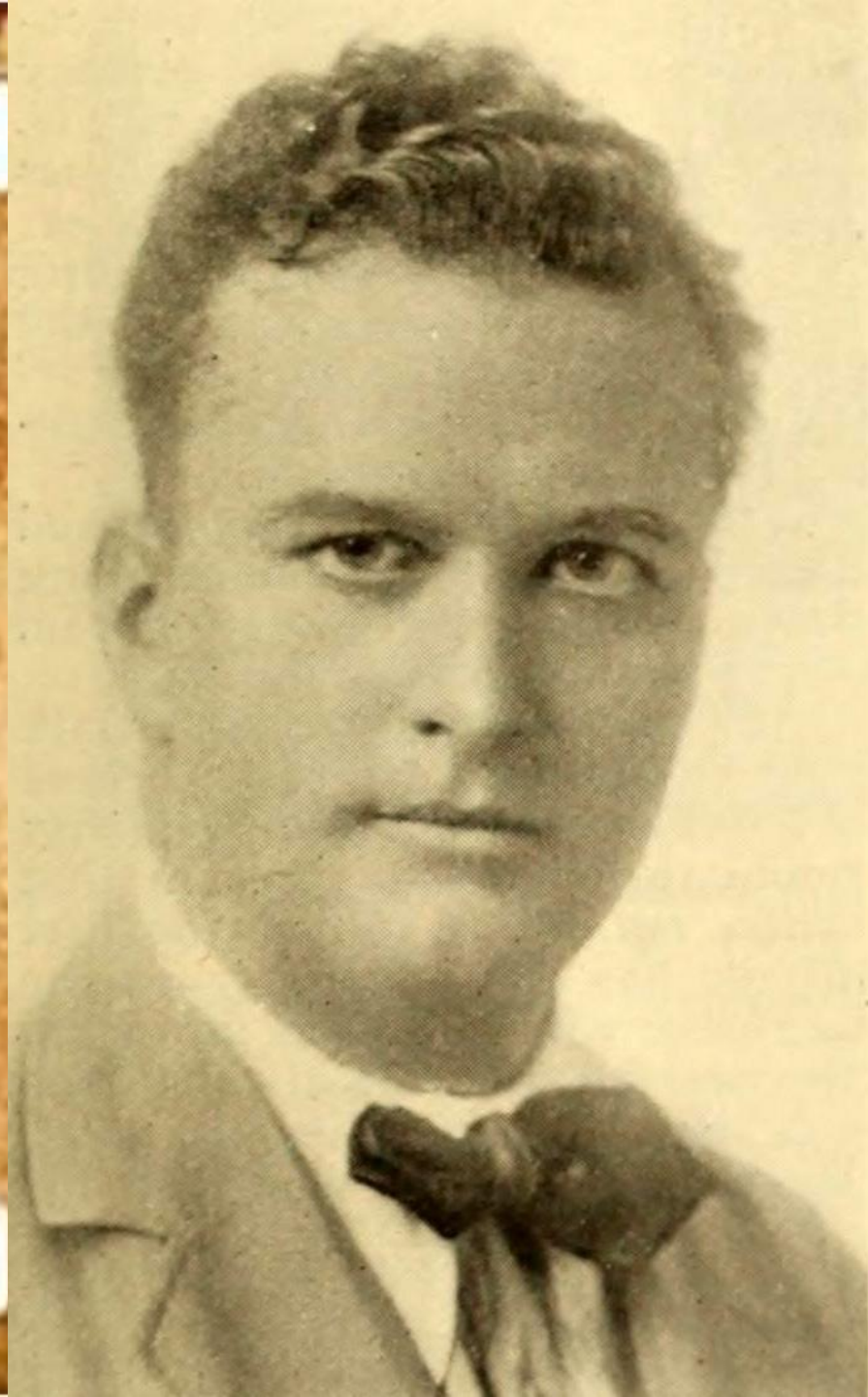


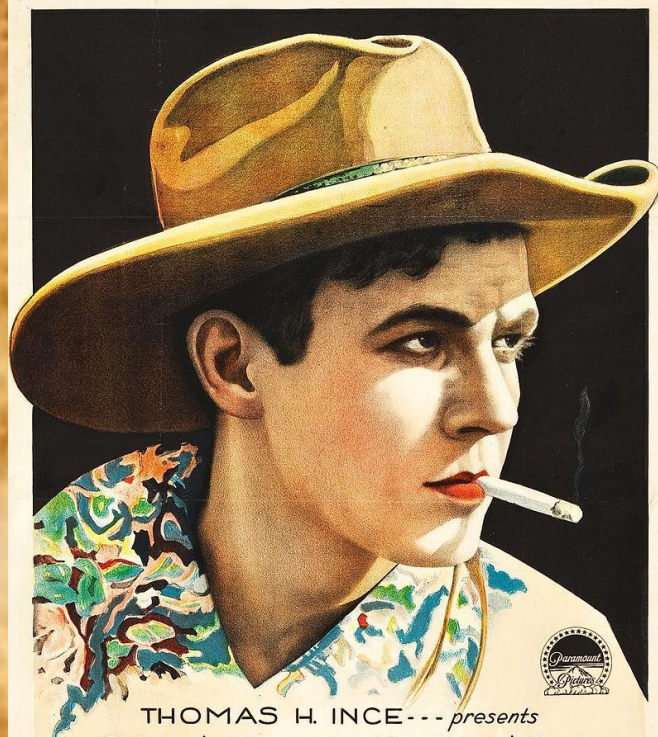




MISS FLORENCE LAWRENCE







THOMAS H. INCE... presents

# CHARLES RAY

IN  
"THE SHERIFF'S SON"

By WILLIAM McLEOD RAINE

Scenario by J. G. HAWKS ~~~ Directed by VICTOR L. SCHERTZINGER

Photographed by CHESTER LYONS ~~~ Produced by THOMAS H. INCE

A PARAMOUNT PICTURE

*Morgan*  
DISTRIBUTORS







AN ARTCRAFT PICTURE



THOMAS H. INCE  
PRESENTS

**WILLIAM S. HART**  
· IN ·  
**"RIDDLE GAWNE"**

BY CHARLES ALDEN SELTZER    PHOTOGRAPHED BY JOE AUGUST  
DIRECTED BY WILLIAM S. HART    SUPERVISION OF THOMAS H. INCE



A PARAMOUNT PICTURE



THE MATING OF MARCELLA

THOMAS H. INCE  
PRESENTS

**Dorothy Dalton**

*"The MATING of MARCELLA"*

by JOSEPH FRANKLIN POLAND

Directed by WILLIAM WELLS  
Photographed by JOHN F. STONE



Supervised by  
THOMAS H. INCE





THOMAS H. INCE PRODUCTION

" THE  
WEAKER  
SEX "

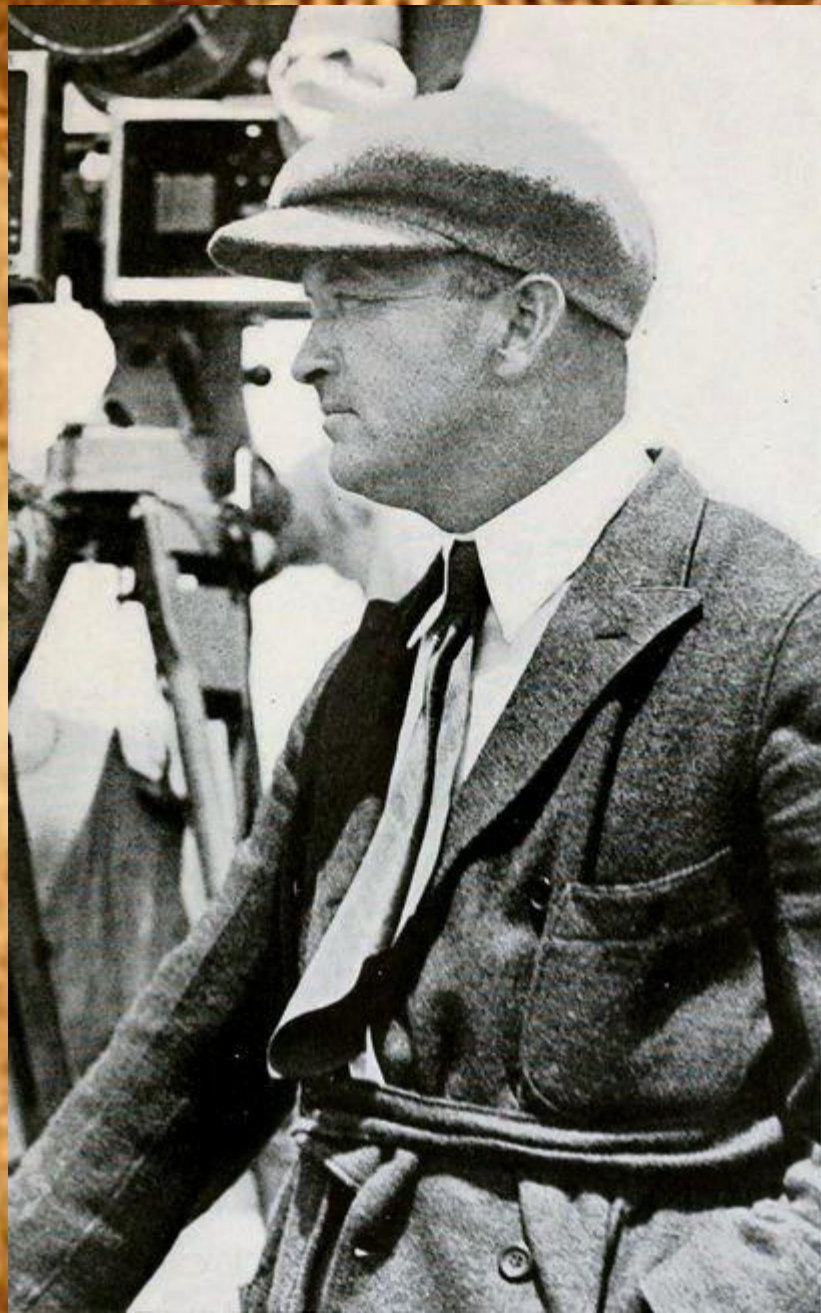
*Featuring*

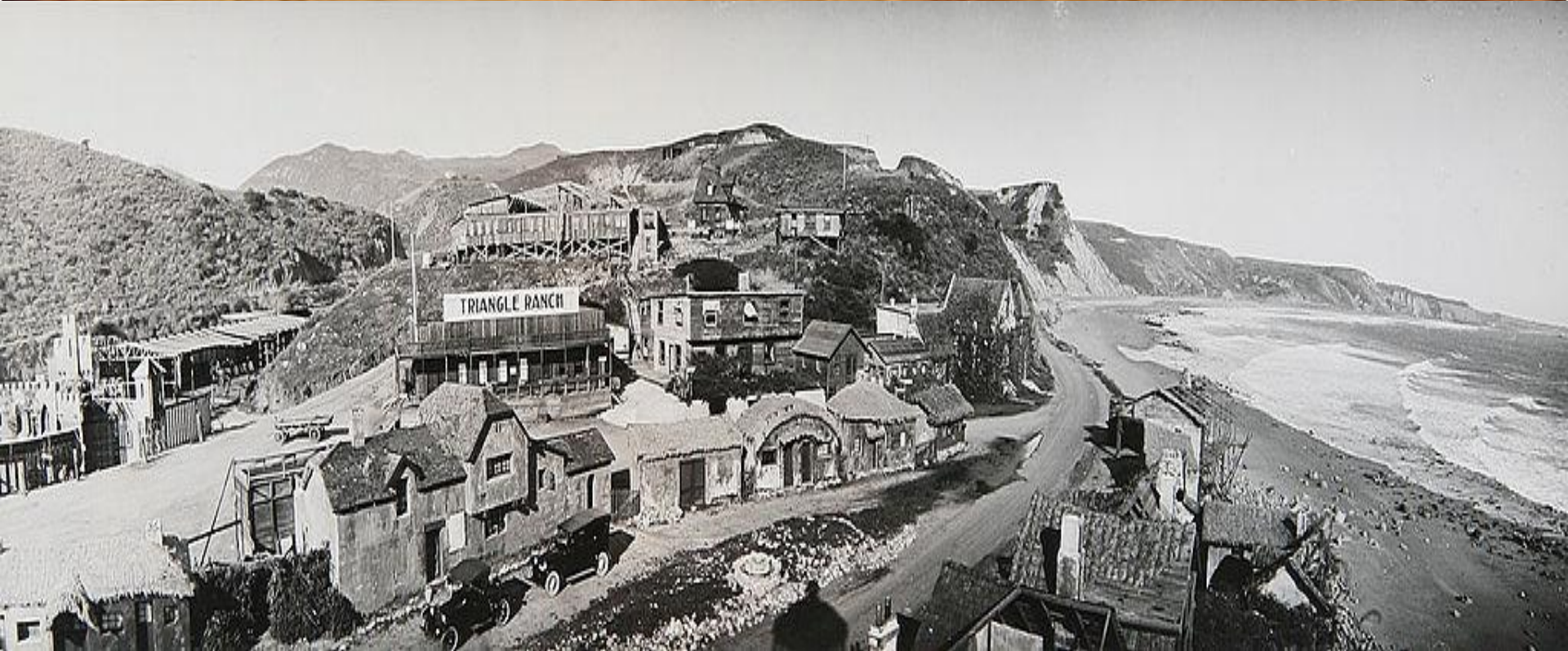
DOROTHY DALTON  
CHARLES RAY  
LOUISE GLAUM

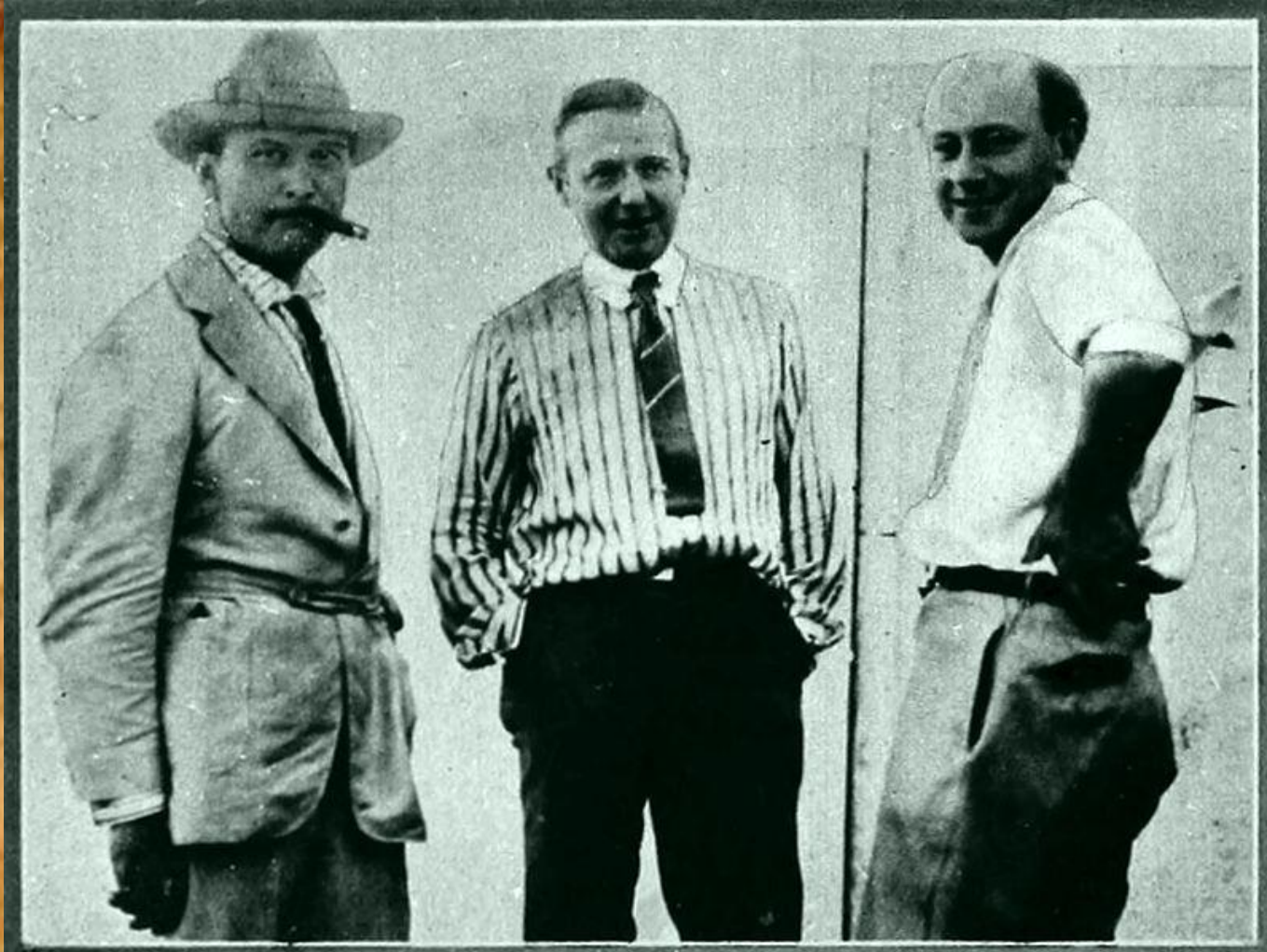


RELEASED THROUGH  
TRIANGLE DISTRIBUTING CORPORATION  
NEW YORK













**Голливуд.**

**Завоевание мира.**

