

---

# WALT DISNEY HISTORY

PROJECT

BY

BELIK AND KOMAROVA

FROM 8G OF 39 SCHOOL



# THE PROJECTS PASSPORT

- 1) What is Walt Disney ?
- 2) Why was Walt Disney ?
- 3) Walt Disney
- 4) What about the work of Walt Disney ?
- 5) Disneyland history
- 6) Excursion to the Disneyland
- 7) Disneyland in California
- 8) Disneyland in Tokyo
- 9) Disneyland in Hong Kong
- 10) Disneyland in Paris
- 11) The using literature and internet resurs



# WHAT IS WALT DISNEY?



# WHO WAS WALT DISNEY ?



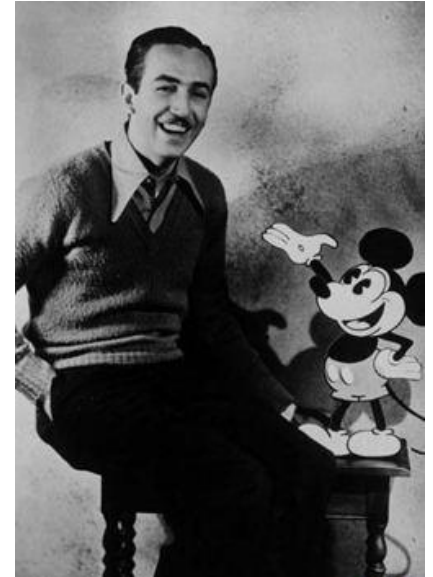
He was an American animator, voice actor and film producer. A pioneer of the American animation industry, he introduced several developments in the production of cartoons.

**He was Born in Chicago in 1901, Disney developed an early interest in drawing. He took art classes as a boy and got a job as a commercial illustrator at the age of 18**

**As a film producer, Disney holds the record for most Academy Awards earned by an individual, having won 22 Oscars from 59 nominations.**

*Walt's family was poor and Walt Disney had to work on it from the age of fourteen. At first he worked as a newsboy, later he was drafted into the army, where he worked as a chauffeur in the Red Cross organization. He was accepted into the studio of film advertising, where he began to work as an artist.*

1924 -His first cartoon film "Alice's Day at Sea"



**He moved to California in the early 1920s and set up the Disney Brother Studio with his brother Roy. With Roy, Walt developed the character Mickey Mouse in 1928, his first highly popular success**



# WALT DISNEY

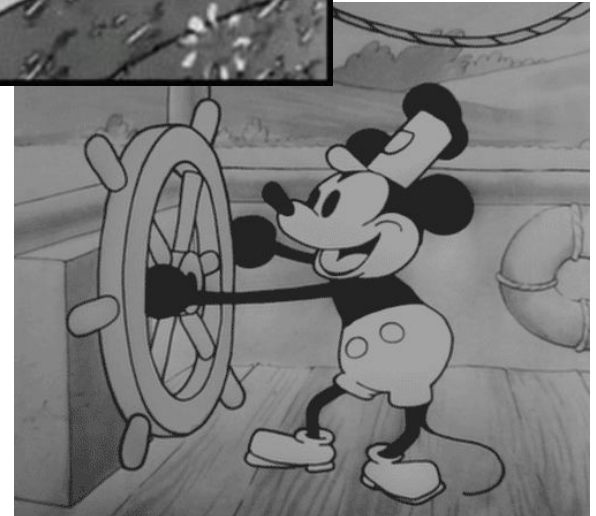


***If you can dream it, you can do it.***

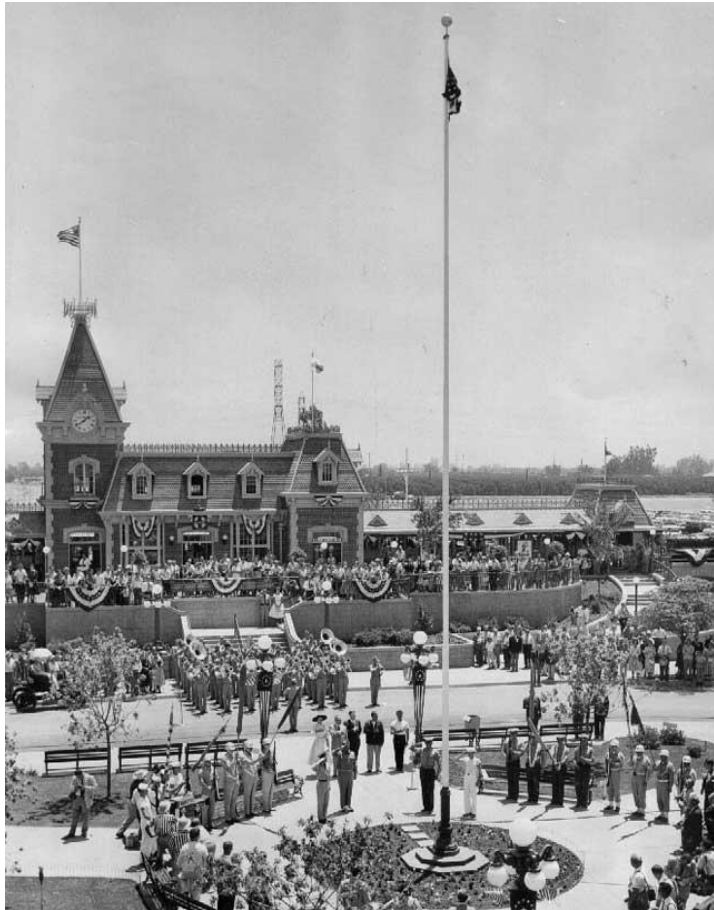
# ABOUT THE WORK OF WALT DISNEY

His first cartoon film - "Alice's Day at Sea", based on the characters of Lewis Carroll. Walt Disney presented to the public a whole series of cartoons about Alice and other characters of Wonderland. Cartoons were not successful. True popularity came to Walt Disney in 1927 when his friend Abe Iverx created a cartoon about Rabbit Oswald.

The picture was a great success among the children of America. Soon, Walt Disney and his studio became known in the US. After the rabbit in the world of Walt Disney, a new hero appeared, Mortimer, who changed his name and became known as Mickey's mouse. This character first appeared in the cartoon "Mad Airplane", and then became popular that his ears became a symbol of the Disney studio.



# DISNEYLAND HISTORY



## The grand opening of Disneyland took place on July 17, 1955

In the 1940s, children were intrasting, but where do they live Mickey Mouse and Snow White?

Many of them wrote letters to Walt Disney asking to visit his studio, wanting to see how the characters of his cartoons are created.

Walt knew that the existing studio would not be interesting for children. It's time, and he came up with an amusement park Disneyland



Walt was unable to convince the financiers in the success of the Disneyland project. Confident of achieving his goal, he took money from a life insurance contract and sold his second home. Workers of the studio are now not engaged in cartoons, they worked on the park receiving money from personal funds of Disney

# EXCURSION TO THE DISNEYLAND



There are only 5 Disneyland parks. They are located in California, in Tokyo, in Hong Kong, in Florida and Paris

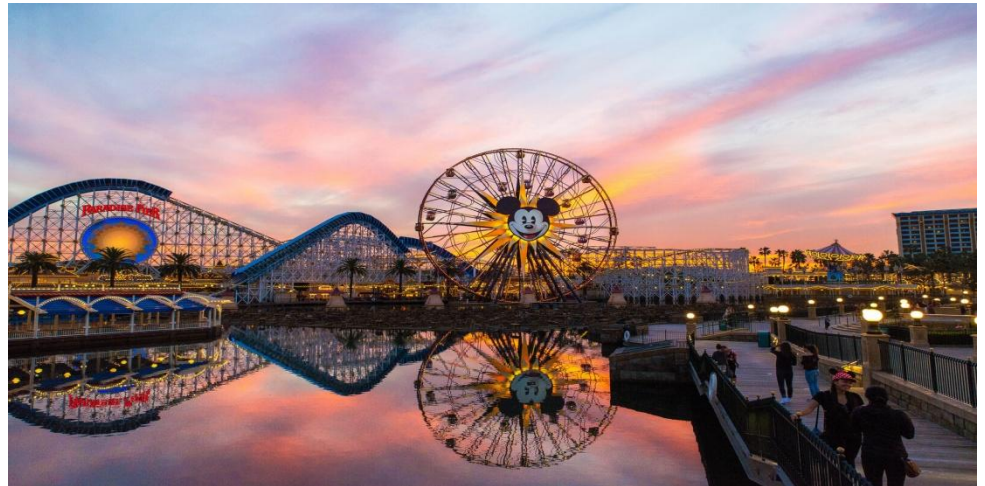


Created in 1955, Disneyland became the first big theme park in which children and adults all together could have fun time .



# DISNEYLAND IN CALIFORNIA

Enter a magical kingdom where you can sail with pirates, explore exotic jungles, meet fairy-tale princesses, dive under the ocean and rocket through the stars—all in the same day! Disneyland Park is a beloved Southern California destination where generations of families have made their Disney dreams come true. Walt's Disney's original Disneyland theme park, which first opened on July 17, 1955, is now divided into 8 extravagantly themed lands: Main Street, U.S.A., Tomorrowland, Fantasyland, Mickey's Toontown, Frontierland, Critter Country, New Orleans Square and Adventureland.



# DISNEYLAND IN TOKYO



TOKYO'S DISNEYLAND - one of the largest parks in the world - the first park of Walt Disney Company outside of America - is located on the coast in Chiba Prefecture. Also there are DisneySea its park with sea theme. Japanese Disneyland is considered the most beautiful of all Disney Worlds.

It was built in 1983. Disneyland in Tokyo was created by analogy with California, but more. today the park is called - **Tokyo Disney Resort**. On the territory of 80 hectares are located 47 rides, which are divided into 7 sectors: Critter Cantry , Westernland , Adventureland , Fantasy Land, Toontown , Tomorrowland , World Bazaar.





# DISNEYLAND IN HONG KONG



Hong Kong Disneyland is the youngest and smallest of all Walt Disney parks, but Disneyland on **Lantau** Island is still one of the largest amusement parks in Asia, and therefore deserves attention, especially if you are going to travel with children.

*Opened in September 2005, the park is spread over an area of **126 hectares** around a huge natural lake. Its erection cost Hong Kong \$ 1.8 billion. In the park there are two hotels: Hong Kong Disneyland and Disney Hollywood Hotel.*

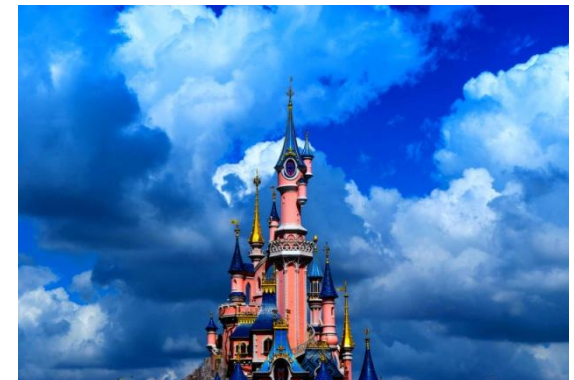
**It's funny that Disneyland, created though and based on American cartoons, but with Chinese flavor. So, for example, Alice of Wonderland sings in Chinese, in restaurants and cafes of the park you will be offered mainly Chinese national food, and the park itself is built in the best traditions of **Feng Shui****

# DISNEYLAND IN PARIS

Disneyland  
PARIS



Disneyland Paris was opened 12 april 1992 , it includes five theme parks grouped around the Sleeping Beauty castle- the symbol of Disneyland: **Adventureland, Frontierland, Main Street USA, Discoveryland, Fantasyland, Walt Disney Studios Park, Disney Village, Golf Disneyland**





# USING LITERATURE AND INTERNET RESURS

- 1) <https://disneyland.disney.go.com/destinations/disneyland>
- 2) <http://news.ykt.ru/article/11303>
- 3) <http://tourist-area.com/istoriya-turizma/istoriya-disneylenda>
- 4) <http://www.tokyodisneyresort.jp/top.html>
- 5) <http://www.disneylandparis.ru/?c=RU-EN>

THANK YOU FOR ATTENTION!

