

# LG kompaniyasi



0-2A-15 GURUH TALABASI

MIRSOBITOV MIRQOBIL

# Reja

- ▶ Kompaniya tarixi
- ▶ Kompaniya Strukturasi
- ▶ Kompaniya maqsadi
- ▶ LG kompaniyasining hozirgi kundagi o'rni

# LG kompaniya tarixi



- ▶ 1947Yilda.Ko inxva (Koo In-hwoiUncha katta bo'lmagan kimyoviy va kosmetik mahsulot ishlab chiqaradigan „Lak Hui Chemical Industries“firmasini ochgan.Firmaning ilk mahsuloti yuz uchun krem edi.



- 1952-yilda Koreyada birinchi bo'lib plasmassa ishlab chiqara boshladi



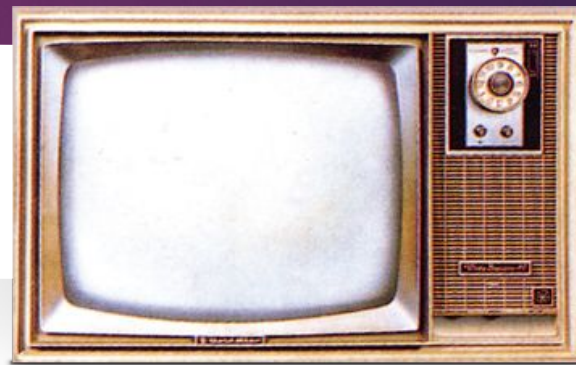
- 1954-Yilda „lucky nomli tish pastasi ishlab chiqara boshladi



- ▶ 1959-yilda Koreyada birinchi bolib tranzistorli radiopriomnik ishlab chiqara boshladi



- ▶ 1965 Goldstar birinchi muzlatgich



- ▶ 1966 Koreyada birinchi oq qora televizor ishlab chiqardi



- ▶ 2009 LG dunyoda telefon ishlab chiqarish boyicha 3-oringa chiqib oldi



- ▶ 2010 LG dunyoda 1-bolib 2yadroli telefon chiqardi ( LG Optimus 2X ).



- ▶ 2011 LG dunyoda 1-bolib 3D qollaydigan telefon chiqardi (LG Optimus 3D).

## Murakkab tizim

- ▶  **Noaniqlik**
- ▶  **Emerdjentlik**
- ▶  **Iyerarxiya**
- ▶  **Agregatlilik**
- ▶  **Ko'p funktsionallik**
- ▶  **O'zgaruvchanlik**

- ▶  **Adaptatsiya**
- ▶  **Ishonchlilik**
- ▶  **Xavfsizlik**
- ▶  **Turg'unlilik**
- ▶  **Zaiflik**
- ▶  **Yashovchanlik**



▶ LG Kompaniyasi  
murakkab strukturasi  
iyerarxik ko'rinishda

Глава предприятия

Функциональный  
руководитель

Функциональный  
руководитель

Функциональный  
руководитель

Сотрудник

Сотрудник

Сотрудник

Сотрудник

Сотрудник

Сотрудник

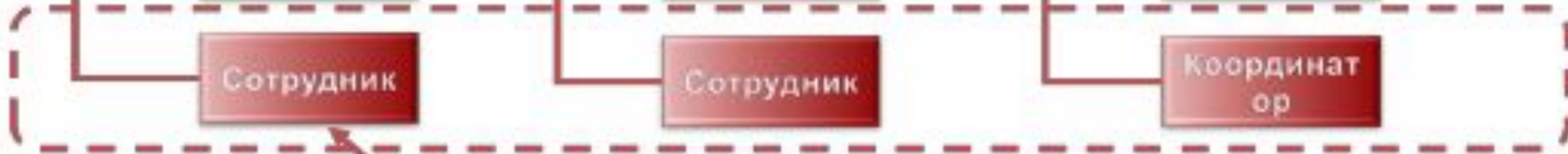
Сотрудник

Сотрудник

Координат  
ор

Участник  
проекта

Координация  
проекта









# LG kompaniyasining maqsadi

- ▶ Dunyo aholisini mehnat faoliyatini, yashash sharoitini yaxshilash. Ularni turmush darajasini oshirish uchun kerak bo'ladigan maishiy texnika va texnologiyalar bilan ta'minlash. Dunyo aholisini o'z brendi asosda birlashtirish. LG kompaniyasining shiori : "Life is Good" ya'ni hayot yaxshi. LG kompaniyasi bu shiori orqali o'z texnikalari yordamida Dunyo aholisiga hayotni naqadar yaxshiligini takidlab ko'rsatib berishmoqda



LG APPS

smartWorld™

Мои приложения



Все

Игры

Развлекател...

Полезные

Обучающие

Новост

ГОРЯЧИЙ

ТОП платных

ТОП беспла...

НОВЫЙ

Весь список



SS IPTV



MerHigh



Slydris



Sportbo...



American...



Eurospor...



Delfi EE



Delfi LT



Plants vs ...

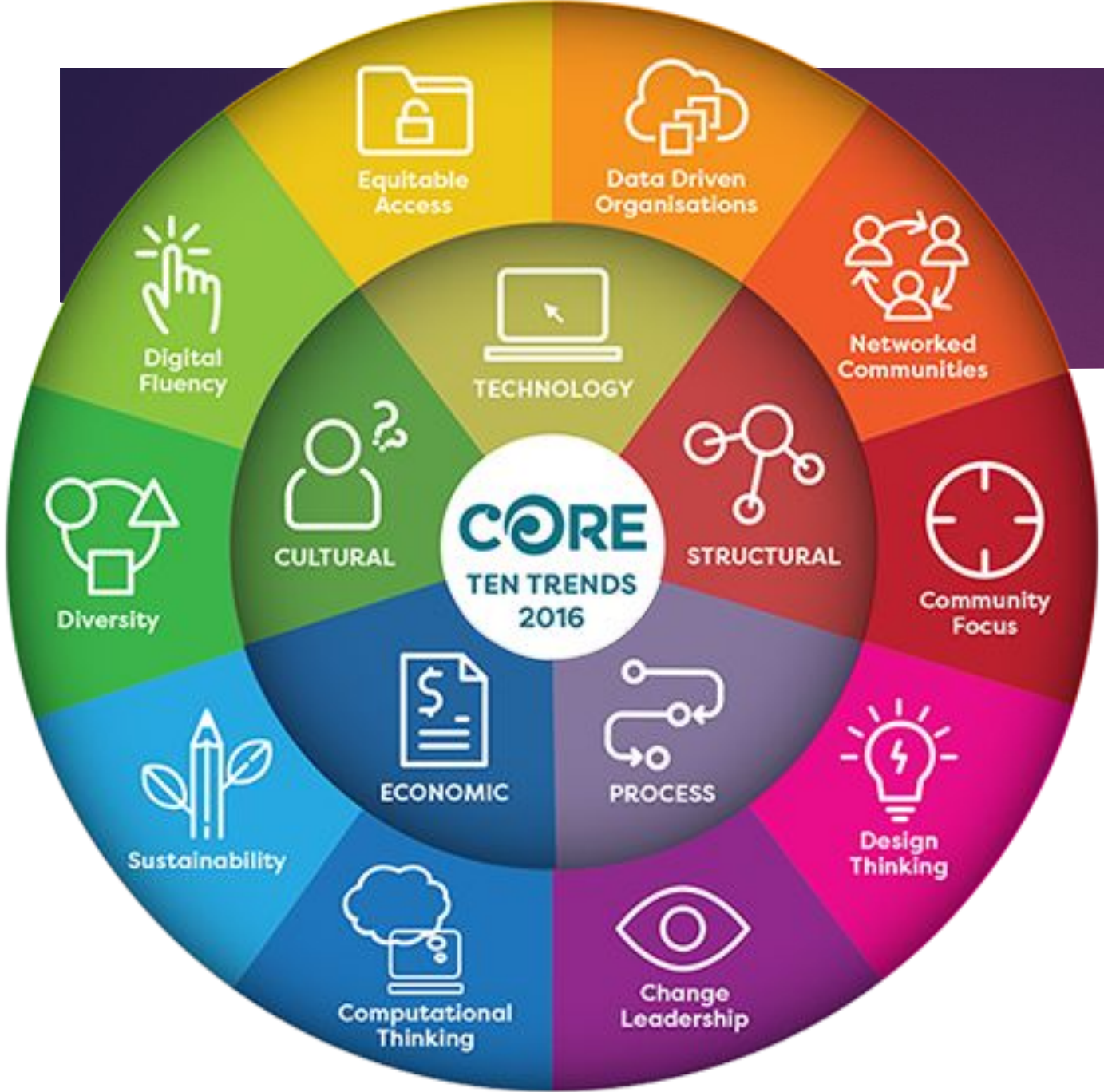
CINEMA Smart TV

www.lgappstv.com

LG AppsTV

2.57 mm

LG SIGNATURE  
OLED TV



**LIFE'S GOOD WITH LG**

LIFE'S GOOD WITH LG is the official CSR slogan of LG Electronics and conveys our message of care for comprehensive communication with stakeholders about our CSR efforts in a variety of areas.

2015-2016 LG Electronics Sustainability Report

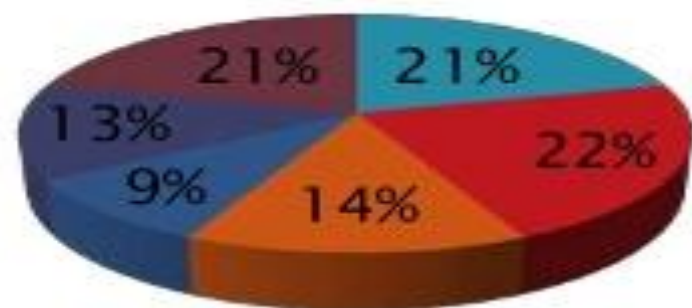


This year marks the 10th anniversary of our sustainability report. Over the course of this ten-year period, LG Electronics strived to achieve sustainable growth, guided by our corporate management philosophy, "Customer-Value Creation" and "People-Oriented Management." And we did make great progress thanks to the enduring trust and support from our stakeholders. LG Electronics will continue to communicate with our stakeholders and strive to build a sustainable organization and sustainable business.

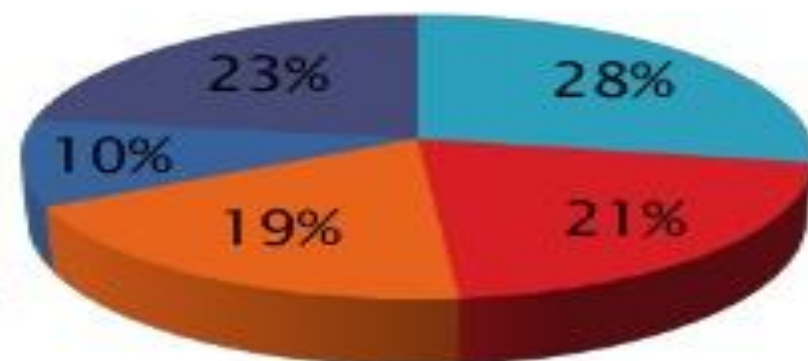


# Market Share

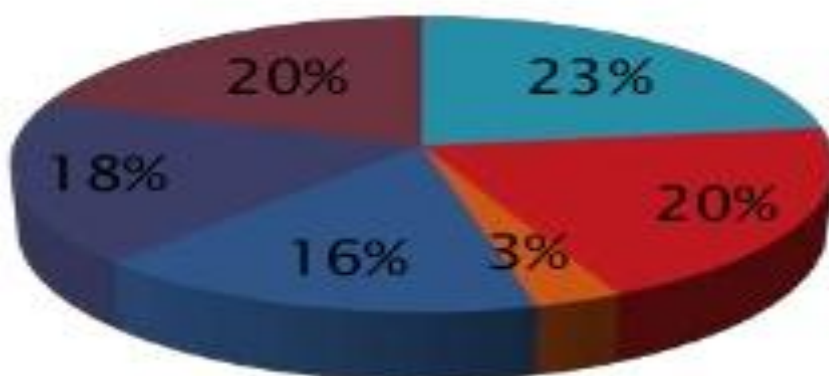
## FLAT PANEL TV



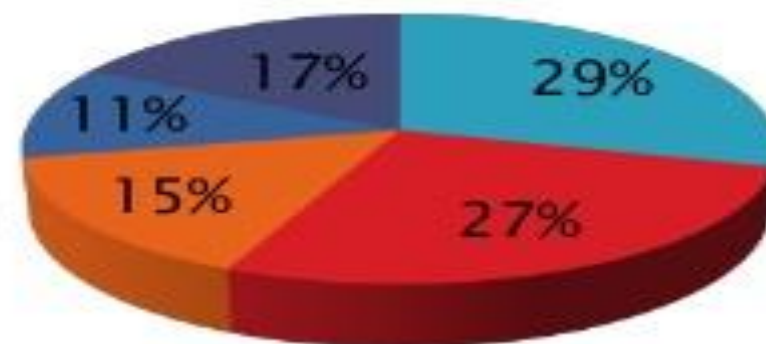
## AC



## REFRIGERATOR



## MICROWAVE OVEN





MakeAGIF.com

E'tiboringiz  
uchun Rahmat