

## Important information & instructions :

1. GM730 is Qualcomm Chipset model
2. Software to be Upgraded through LGDP2 V35\_UMTS
3. Phone to be connected to PC using USB data cable (User Data cable) for software upgrade.
4. ASC's need to order this cable separately as this cable is different from our previous models.
5. It is recommended to remove older versions of LGDP2 being used for TATA CDMA models, before using LDP2 V35.
6. Great care needs to be taken while upgrading this handset. If it becomes dead during flashing due to cable disconnection, Power failure etc, it can not be recovered after that as it does not support UART (Serial) Flashing.

**Part Code** ☐ **SGDY0014302**

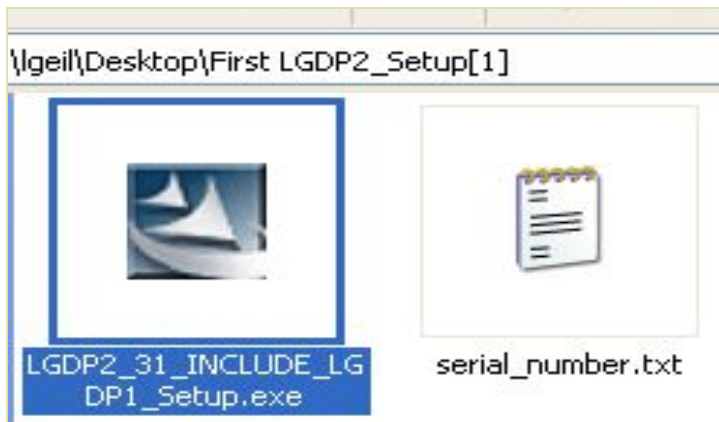


**Step 1:** Download LGDP2 tool. It will have two folders

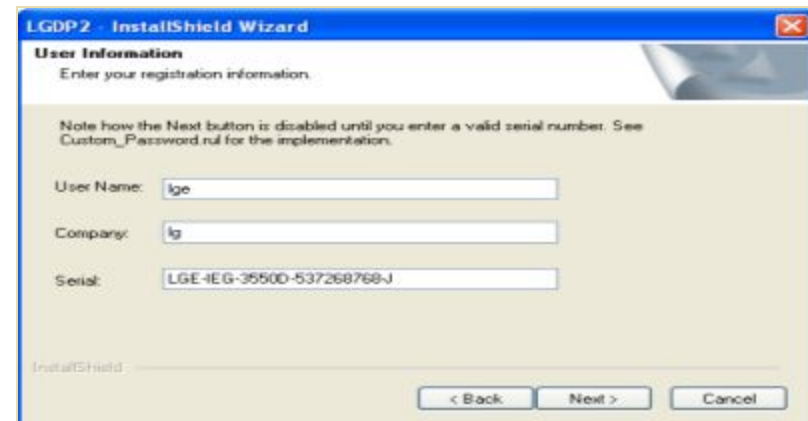
- a) First folder will contain Setup file    b) Second folder will contain other supported files



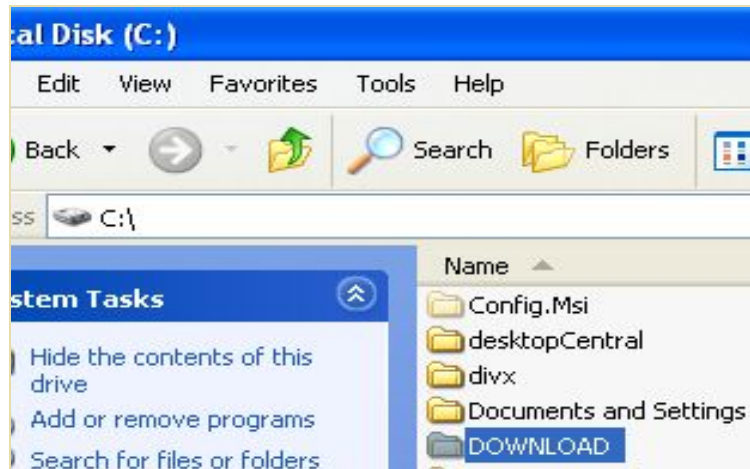
**Step 2:** Install LGDP2 from setup file



**Step 3:** Copy the Sr. No. as provided in the text file

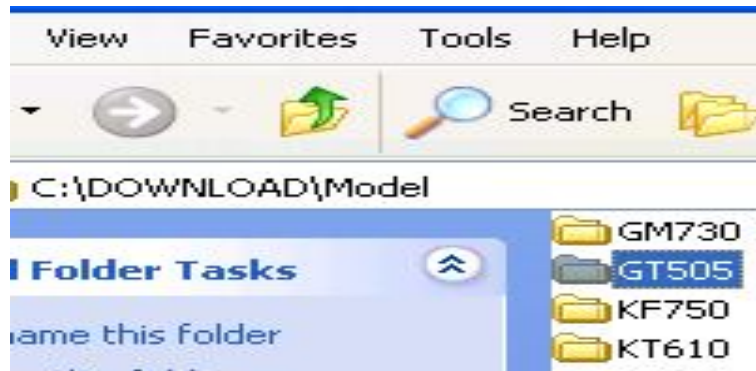


**Step 4:** After installation “Download” folder will be created in c:\ drive



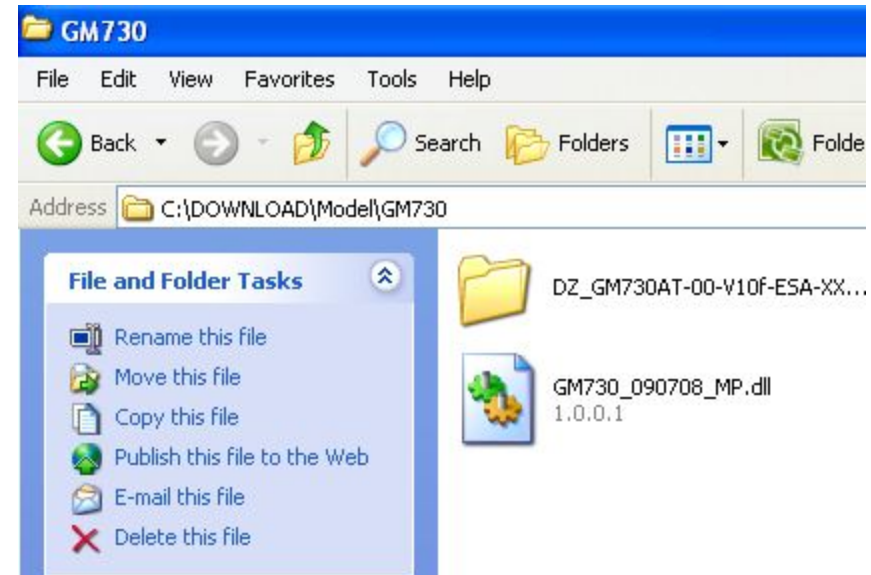
**Step 5:** Now create a folder by name GM730 at the below location

**C://Download/ Models**



**Step 6:** Download model software version & DLL file  
□ Unzip & copy it at the location as shown

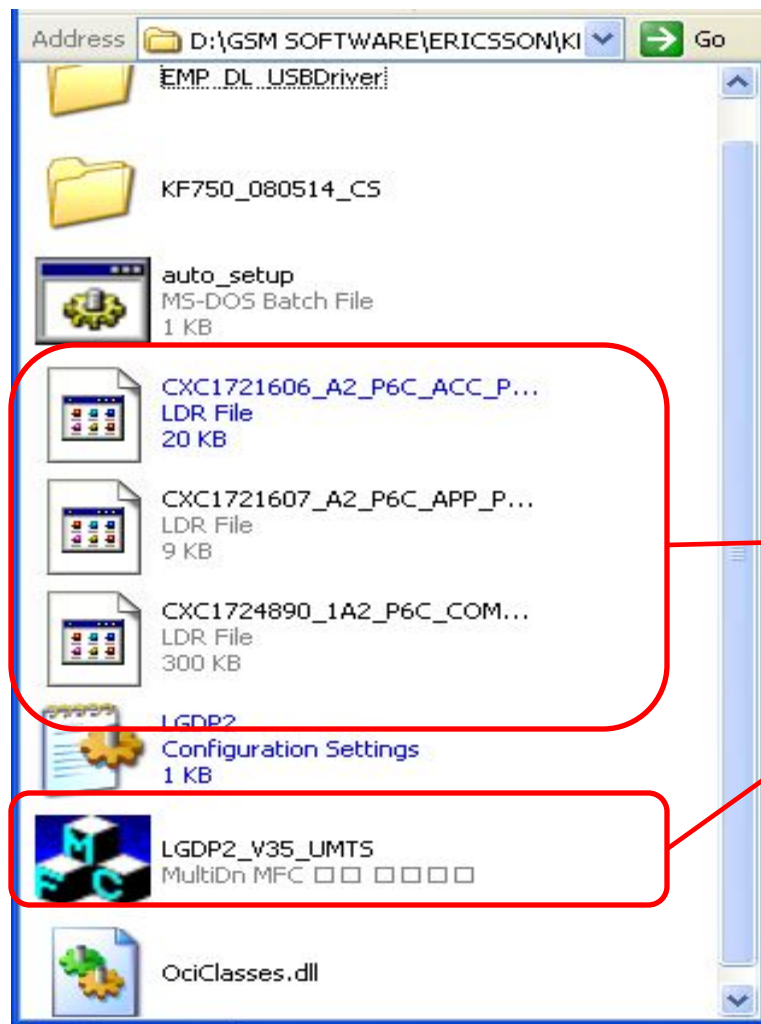
**C:\\DOWNLOAD\\Model\\GM730**



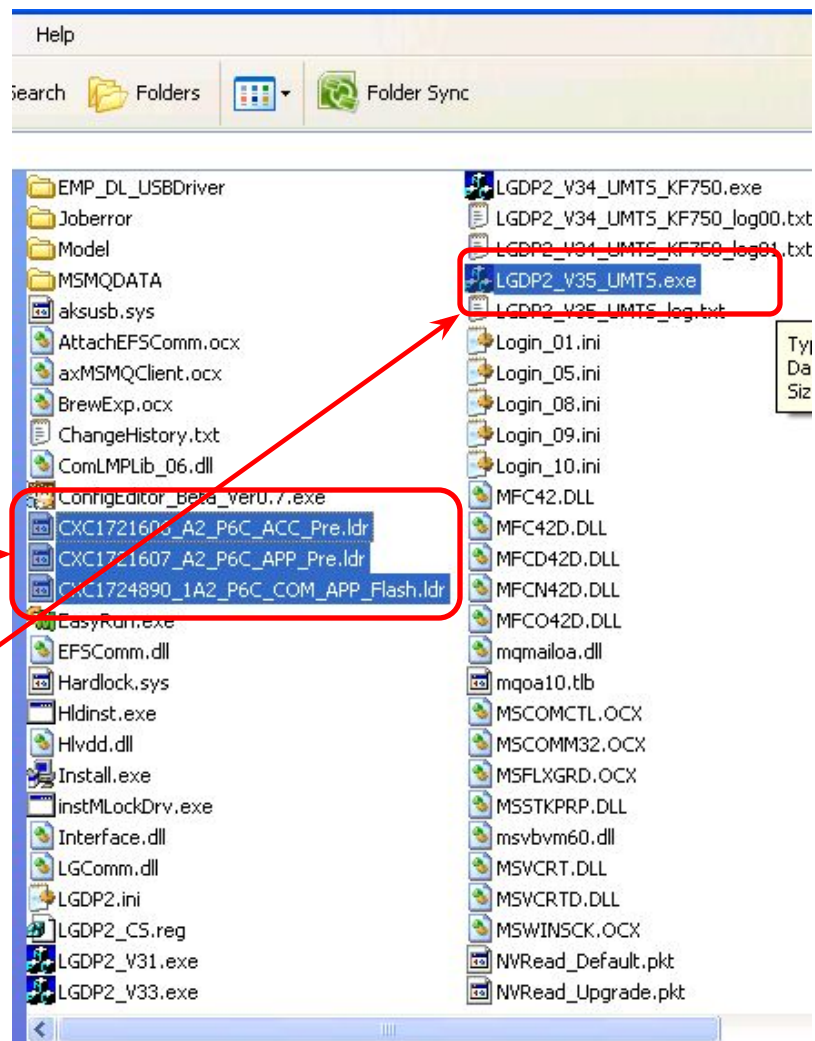
# GM730 Software upgrade Guide



**Step 7:** Open “LGDP2\_V35\_UMTS” folder & copy the encircled files & paste into Download folder in C:\\ drive



**Step 8:** Now right click on “LGDP2\_V35\_UMTS” & create a desktop short cut.



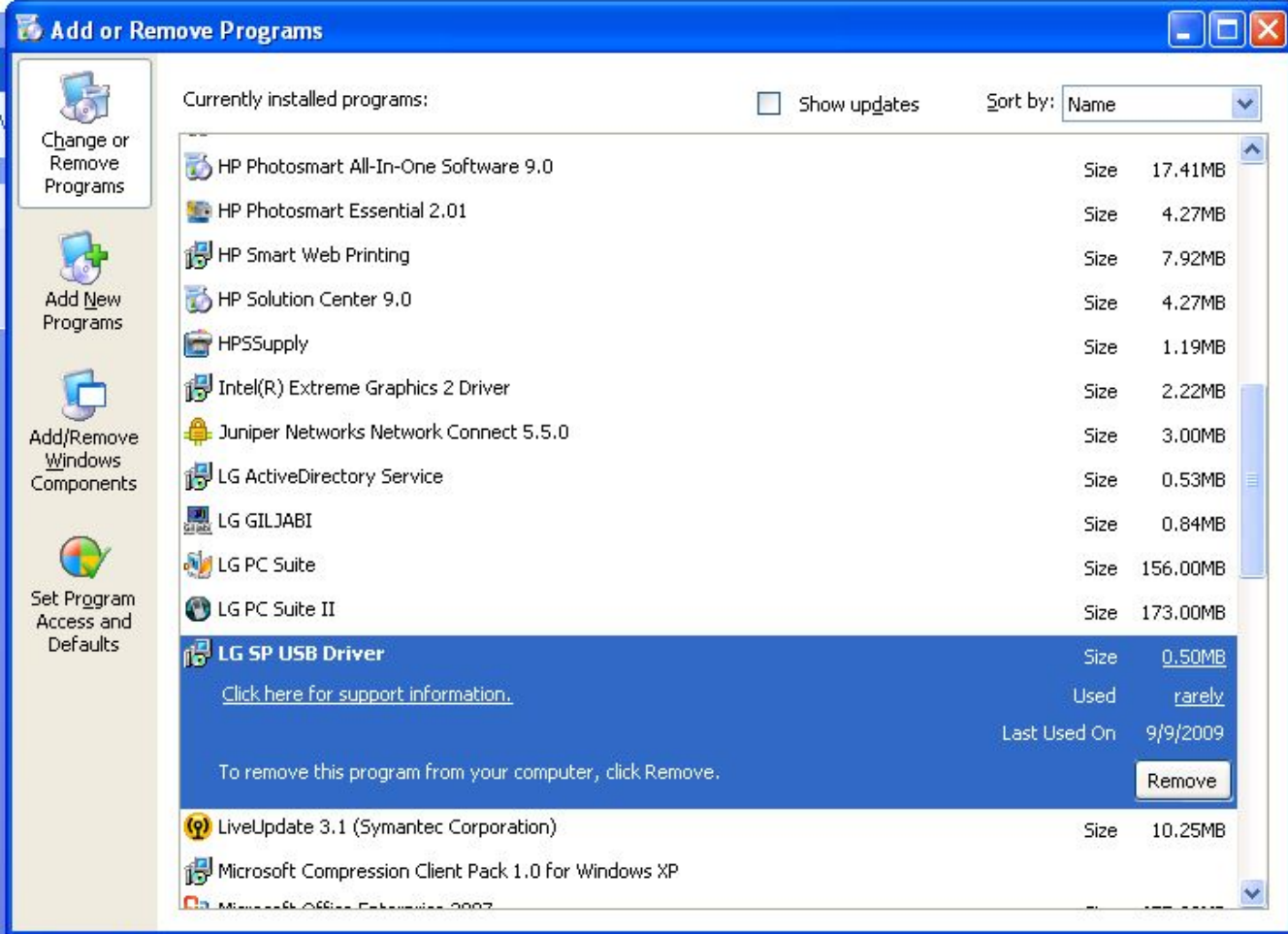
**Step 9:** Now open folder “LGDP2\_V35\_UMTS”  
& double click on “auto\_setup.bat”



**Step 10:** Then install the GM730 USB Driver. It will be available separately with the LGDP2 V35 on Lg mobiles & GCSC websites.



**Step 11:** The installed driver will be shown as “ LG SP USB driver” in installed programmes list.

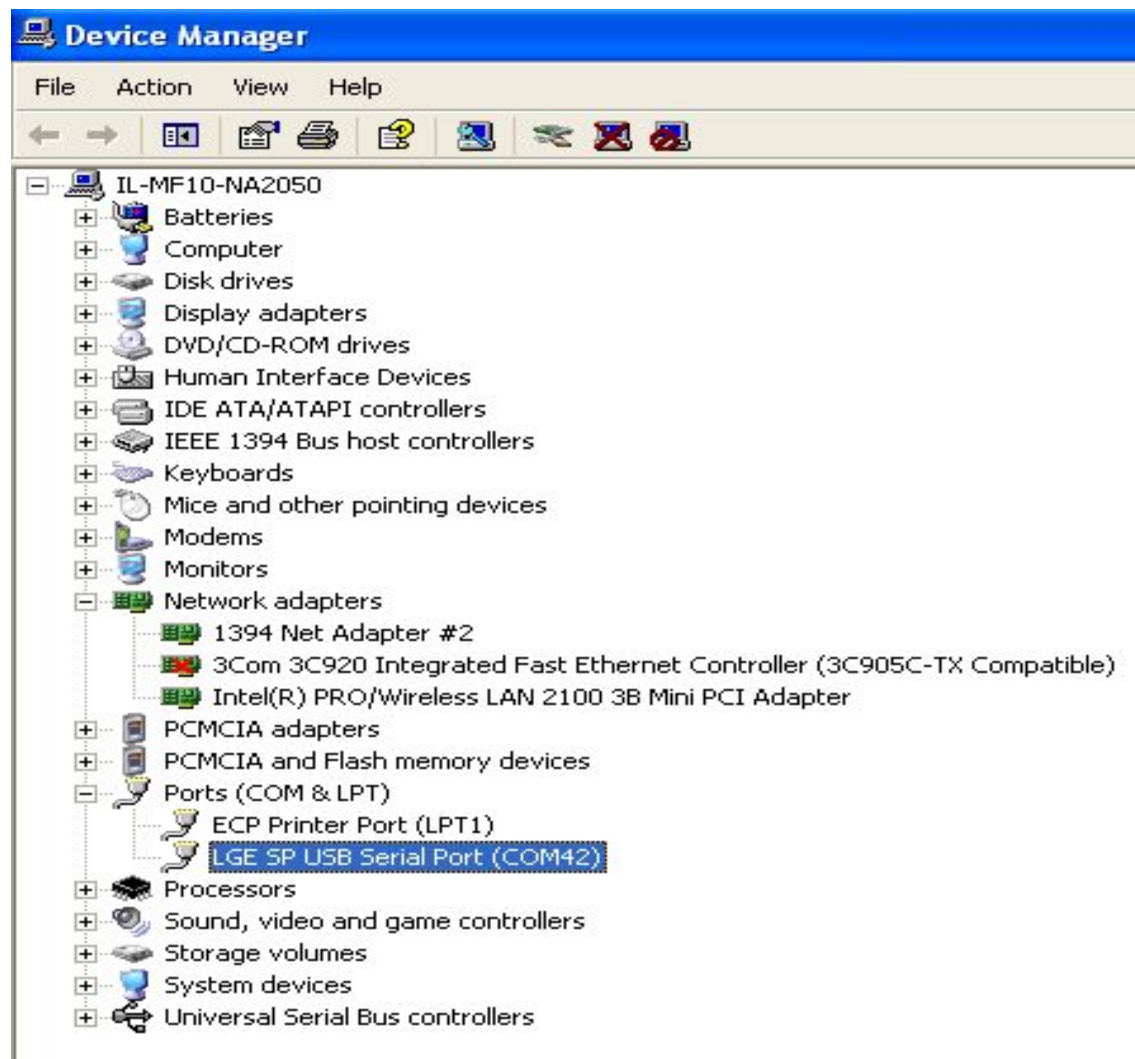


**Step 12:** Now connect phone in “Emergency Download” mode to start driver installation

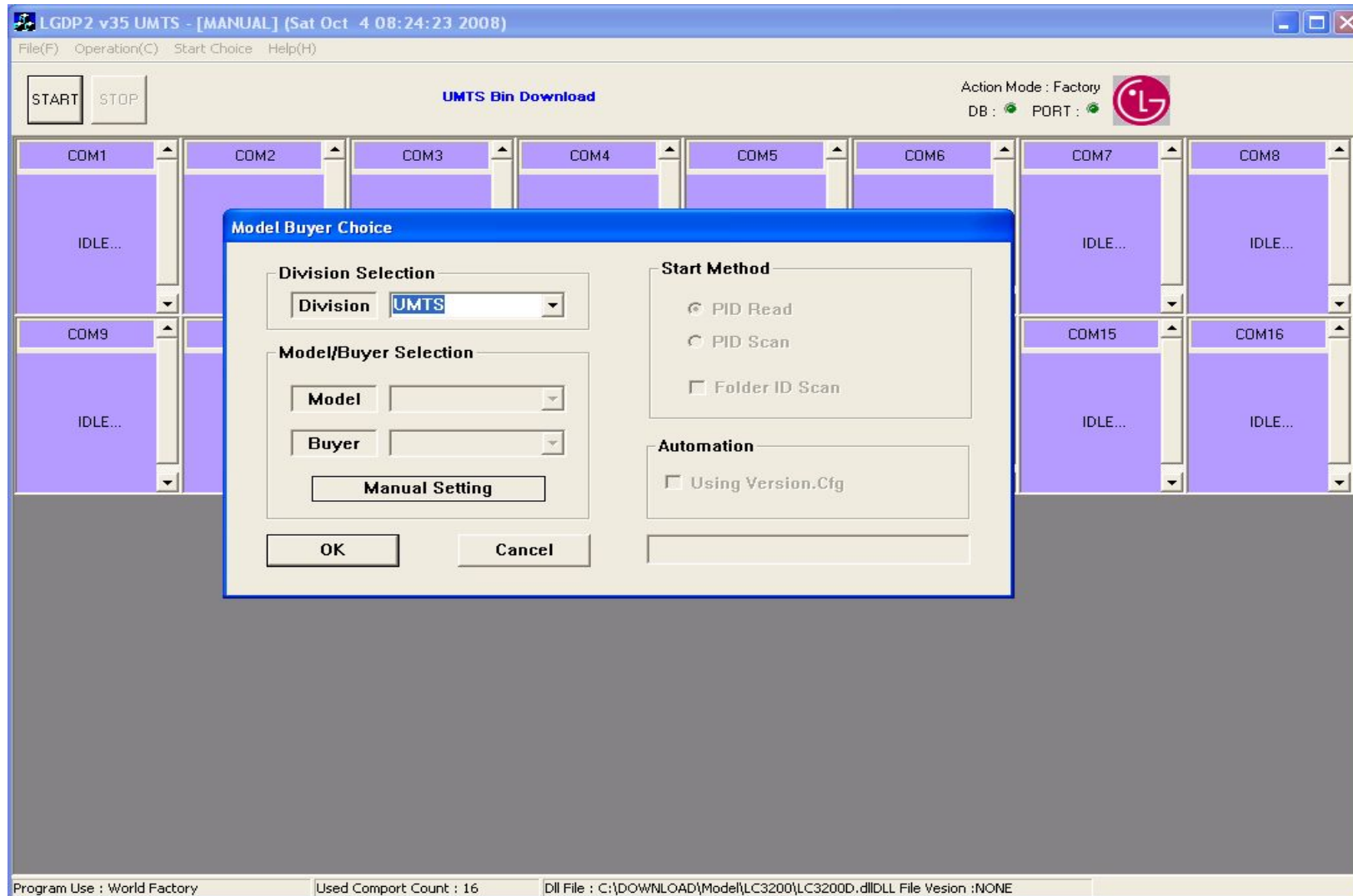
**Note :** To Set phone in Emergency download mode, Insert Battery ☐ Press Volume Key (Both Up & Down) & connect cable. Phone’s Green LED will turn ON & “Emergency Download” appears on screen



**Step 13:** After driver is installed, a USB port gets created in Device Manager as shown below.



## Step 14: Open LGDP2 V35 & Select UMTS



**Step 15:** Select the port as created in Step 13 . Also Select the Dll file & Click on “Run Download Configuration” to select the software file.

Preference (UMTS)

[ Port Selection ]

Easy Select

☐ All

☐ 1~8

☐ 9~16

☐ 17~24

☐ 25~32

Manual Selection

☐ COM41 ☒ COM42 ☐ COM43 ☐ COM44 ☐ COM45 ☐ COM46 ☐ COM47 ☐ COM48

☐ COM49 ☐ COM50 ☐ COM51 ☐ COM52 ☐ COM53 ☐ COM54 ☐ COM55 ☐ COM56

☐ COM57 ☐ COM58 ☐ COM59 ☐ COM60 ☐ COM61 ☐ COM62 ☐ COM63 ☐ COM64

☐ COM65 ☐ COM66 ☐ COM67 ☐ COM68 ☐ COM69 ☐ COM70 ☐ COM71 ☐ COM72

☒ USB Mode

[ DLL Selection ]

C:\DOWNLOAD\Model\GM730\GM730\_090708\_MP.dll

...

[ Download Configuration ]

Run Download Configuration

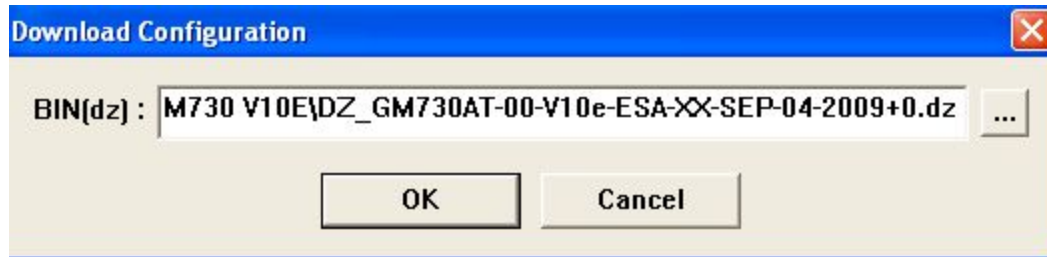
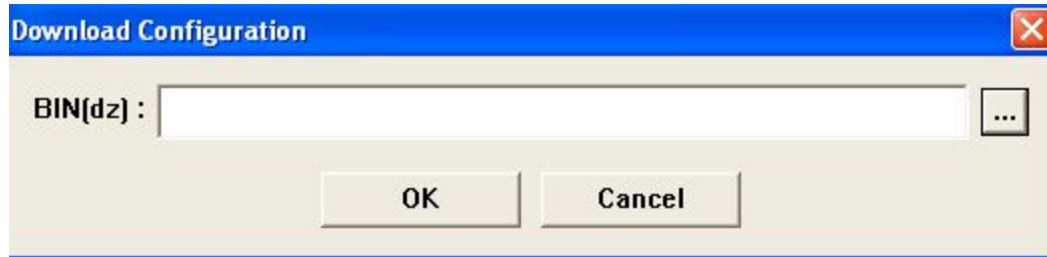
[ DLL Information ]

PATH\_BIN : NULL

OK

Cancel

**Step 16:** Select the software file which is a single .DZ file & Click OK



**Step 17:** Press Start & connect the phone in “Emergency Download” mode to Start the download



Download Starts .....

In Progress .....

Download completed

