

WORLDWIDE  
TELEVISION  
NETWORKS  
INCORPORATED  
STATION  
HOLDINGS



Юрий Алексеевич Гагарин



$6+1=7$  - Ре

$6+2=8$  - ше

$6+3=9$  - ни

$6+4=10$  - е

$6+5=11$  - при

$6+6=12$  - ме

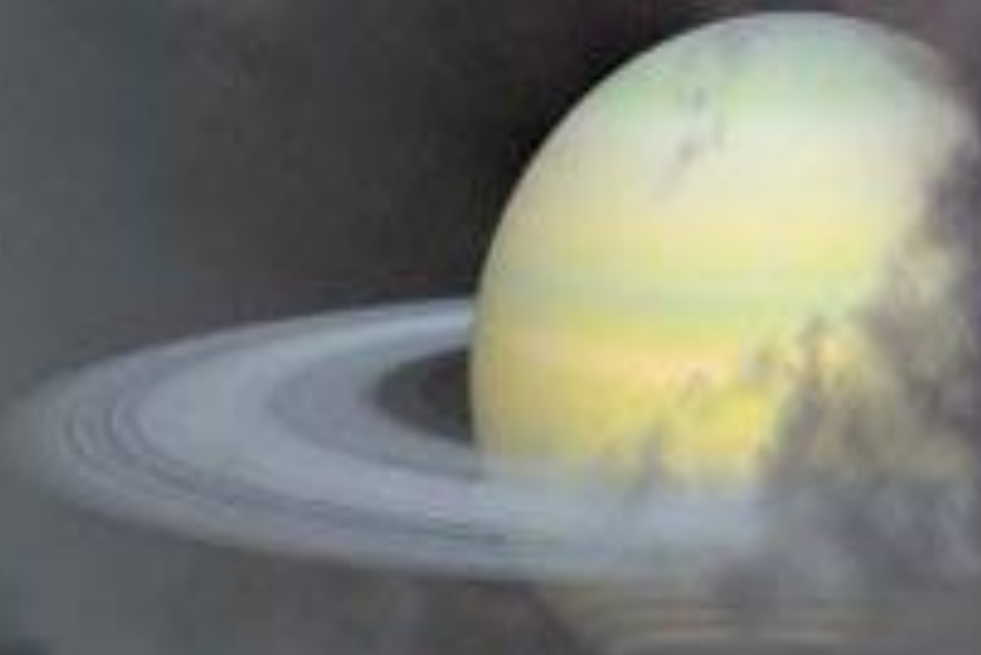
$6+7=13$  - ров

$6+8=14$  - вида

$6+9=15$  - 

**15-6**

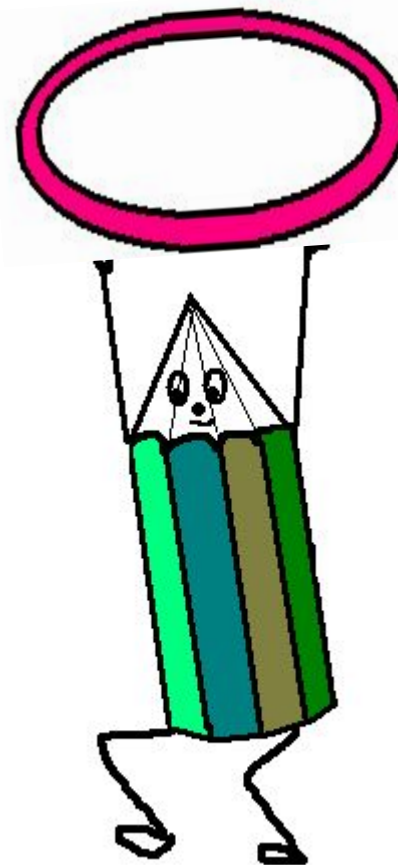
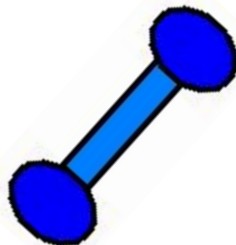
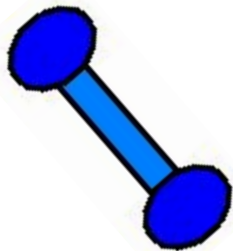
**15-7**

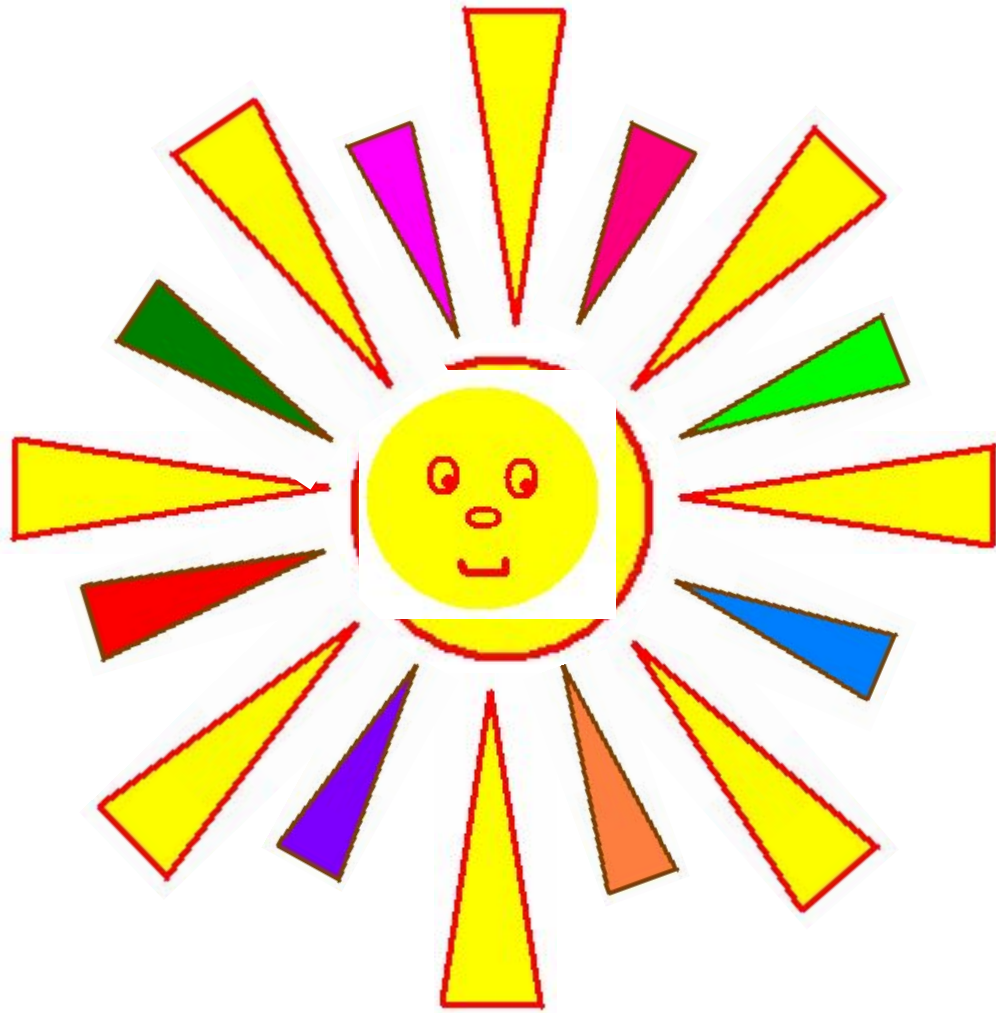


**15-9**

**15-8**

**Пришло  
время  
отдохнуть!**



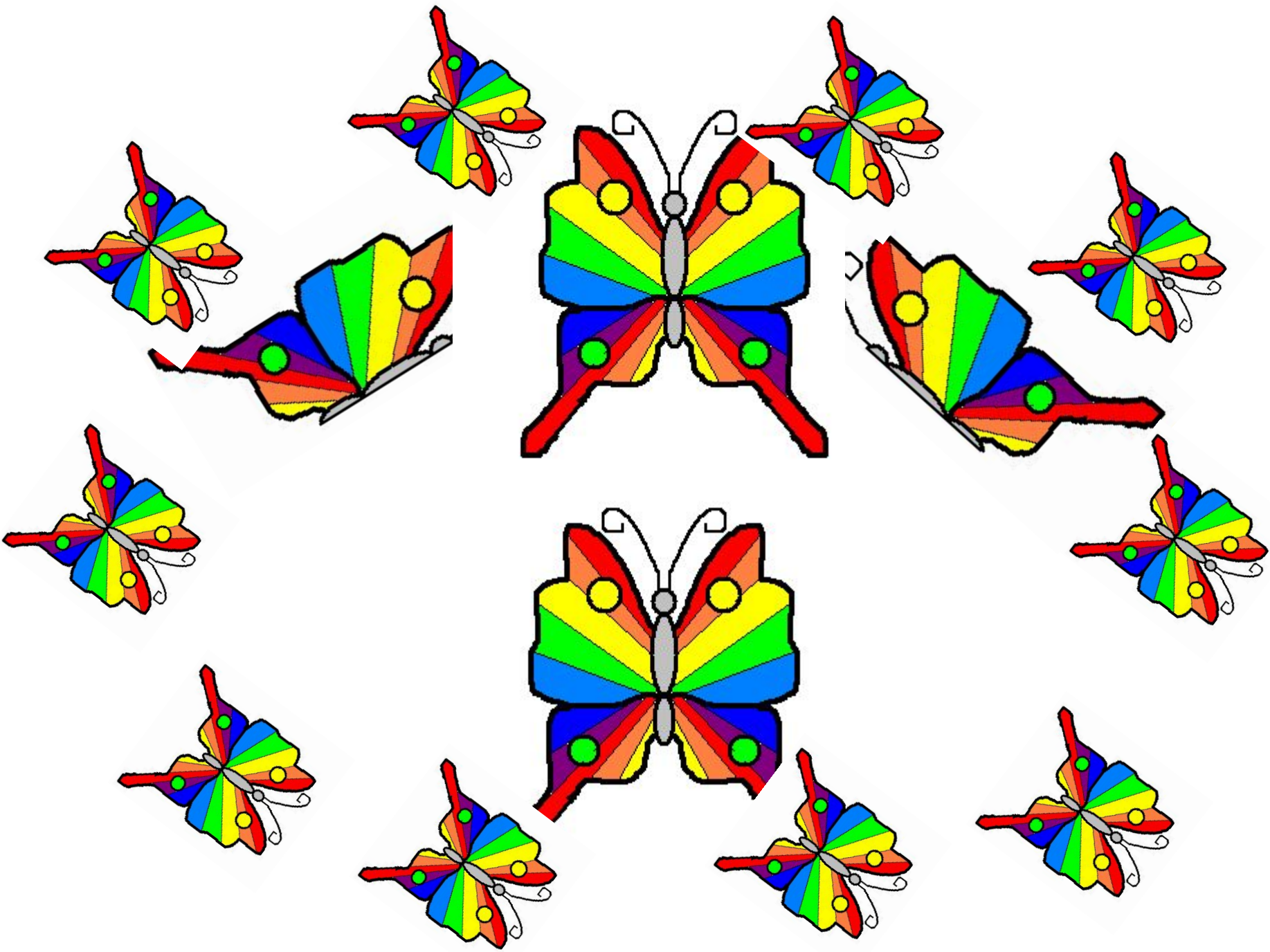


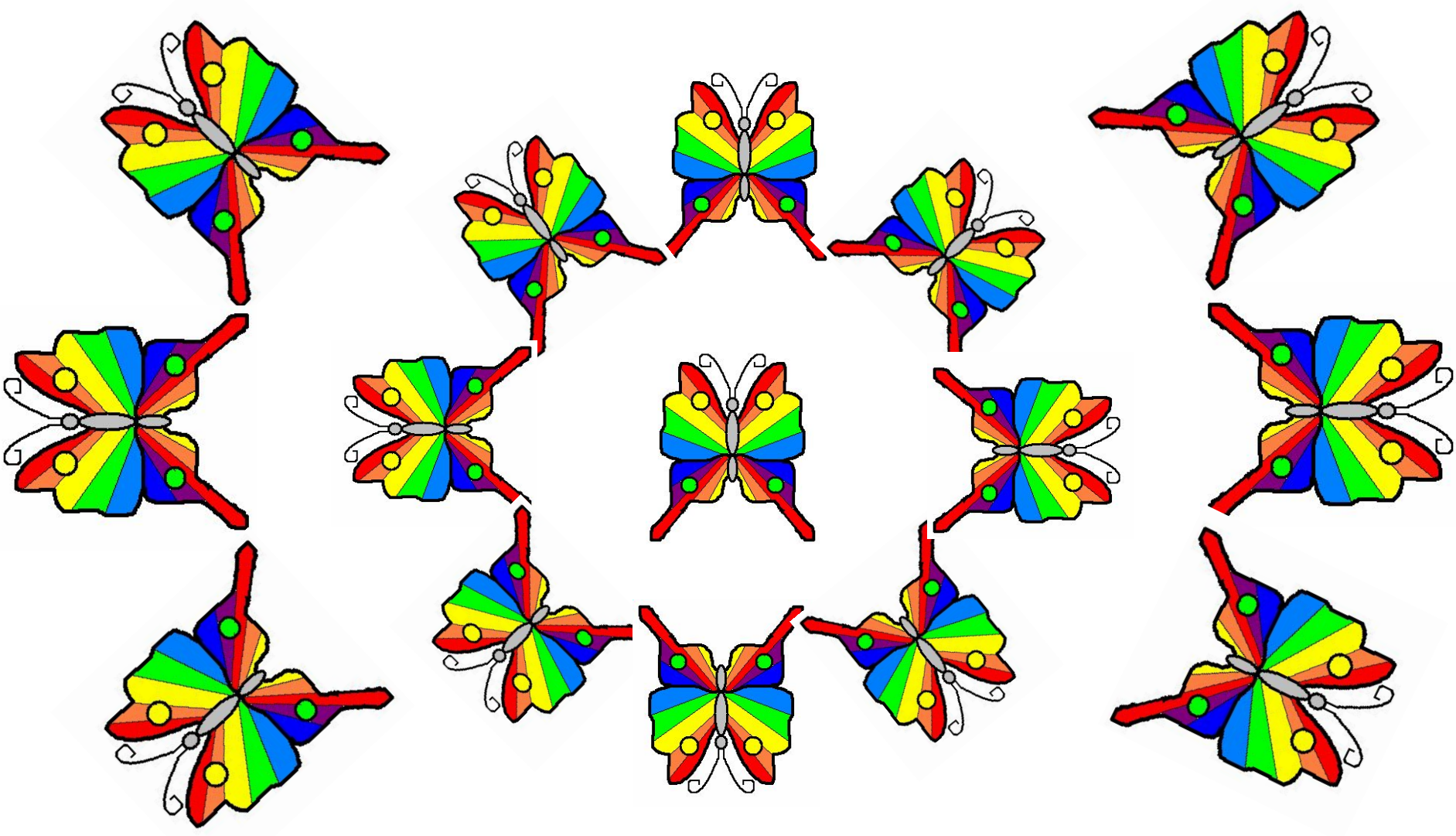




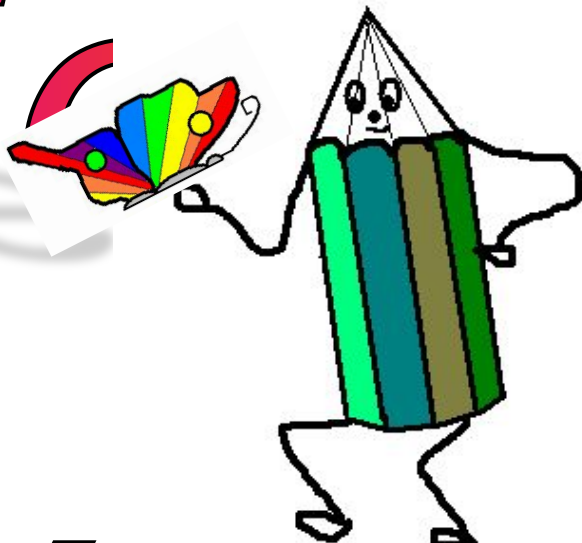








Безум



Зрение

# Астроград

Задача № 2



$8+9$

$14-8$

$15-7$

$15-8$

$13-9$

$15-6$

$4+7$

