

The background of the image is a close-up photograph of water droplets on a dark, reflective surface. The droplets are of various sizes and are arranged in a somewhat regular pattern, creating a textured, shimmering effect. The lighting is soft, highlighting the rounded tops of the droplets and casting subtle shadows.

**Лит**

**р**

**Ш Т П О К И К а а**

**9 7 5 8 3 6 10 4 11**





**Литр. Объём.**



**1 л**

**7 кг**

**1 л**

**4 см**

**6 кг**

**3 см**



**8 кг**

**5 л**

**9 см**

**2 л**

$$2 \text{ л} + 5 \text{ л} = \boxed{7} \text{ л}$$

$$6 \text{ кг} - 4 \text{ кг} = \boxed{2} \text{ кг}$$

$$10 \text{ см} - 8 \text{ см} = \boxed{2} \text{ см}$$

$$3 \text{ кг} + 2 \text{ кг} = \boxed{5} \text{ кг}$$

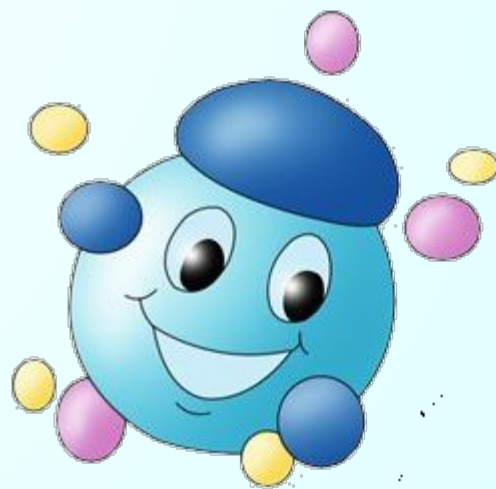
$$7 \text{ кг} - 2 \text{ см} = \boxed{\phantom{00}} \text{ кг}$$

$$4 \text{ л} - 1 \text{ л} = \boxed{3} \text{ л}$$

$$8 \text{ дм} + 2 \text{ дм} = \boxed{10} \text{ дм}$$

$$9 \text{ л} - 2 \text{ бан.} = \boxed{\phantom{00}} \text{ л}$$





• Спасибо за работу!  
Вы - молодцы!  
Берегите воду!