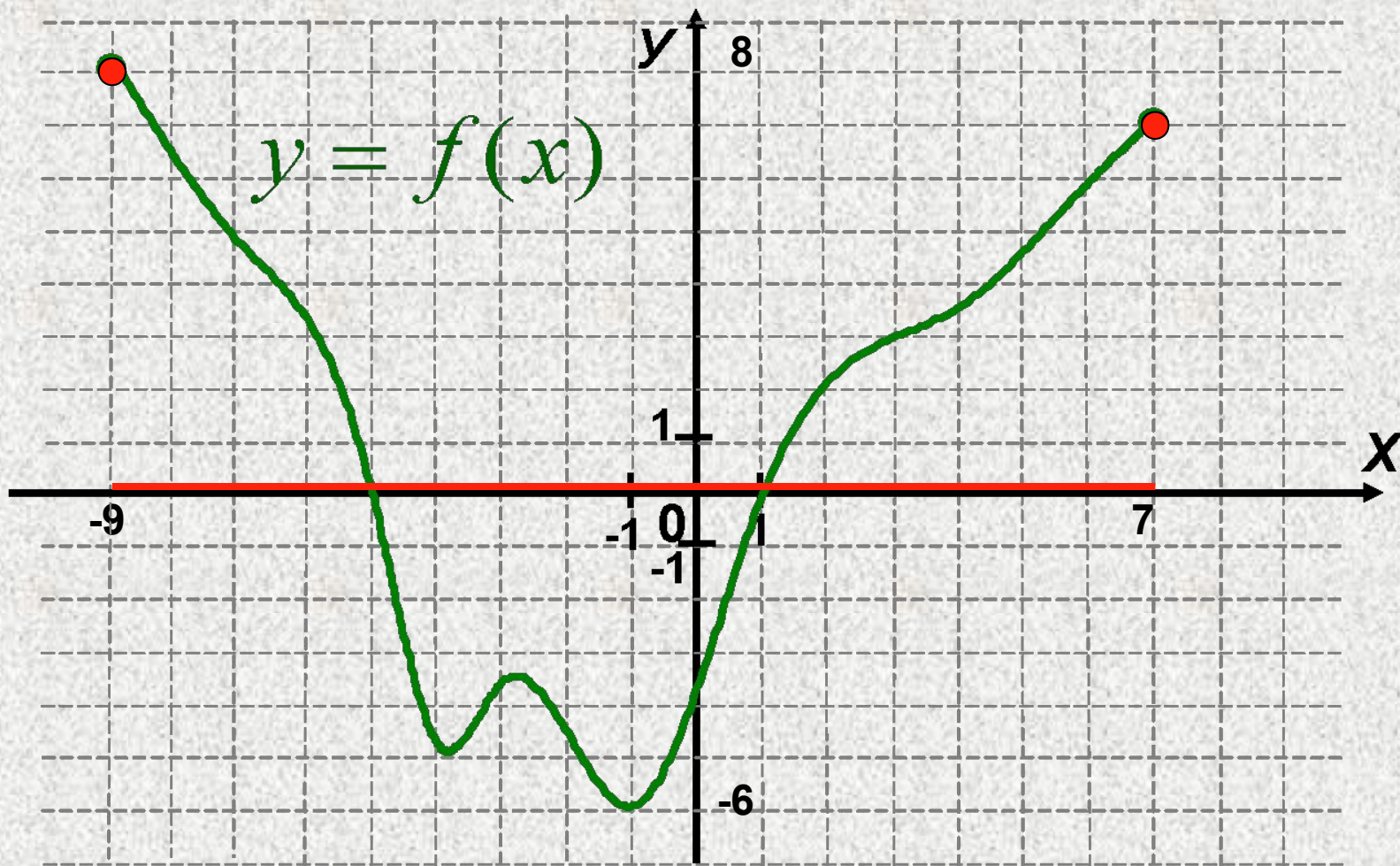


Свойства

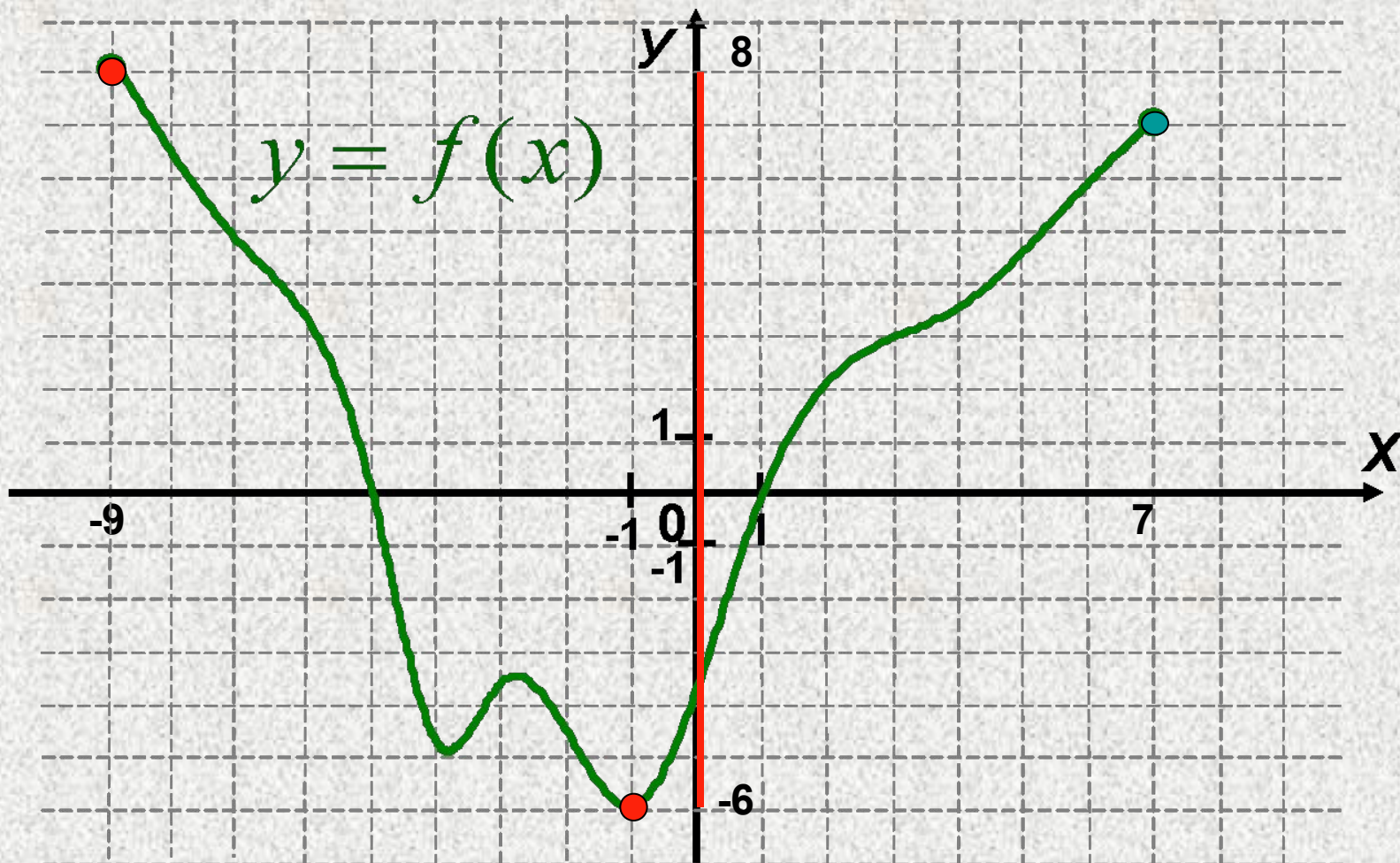
функций

Свойства функции

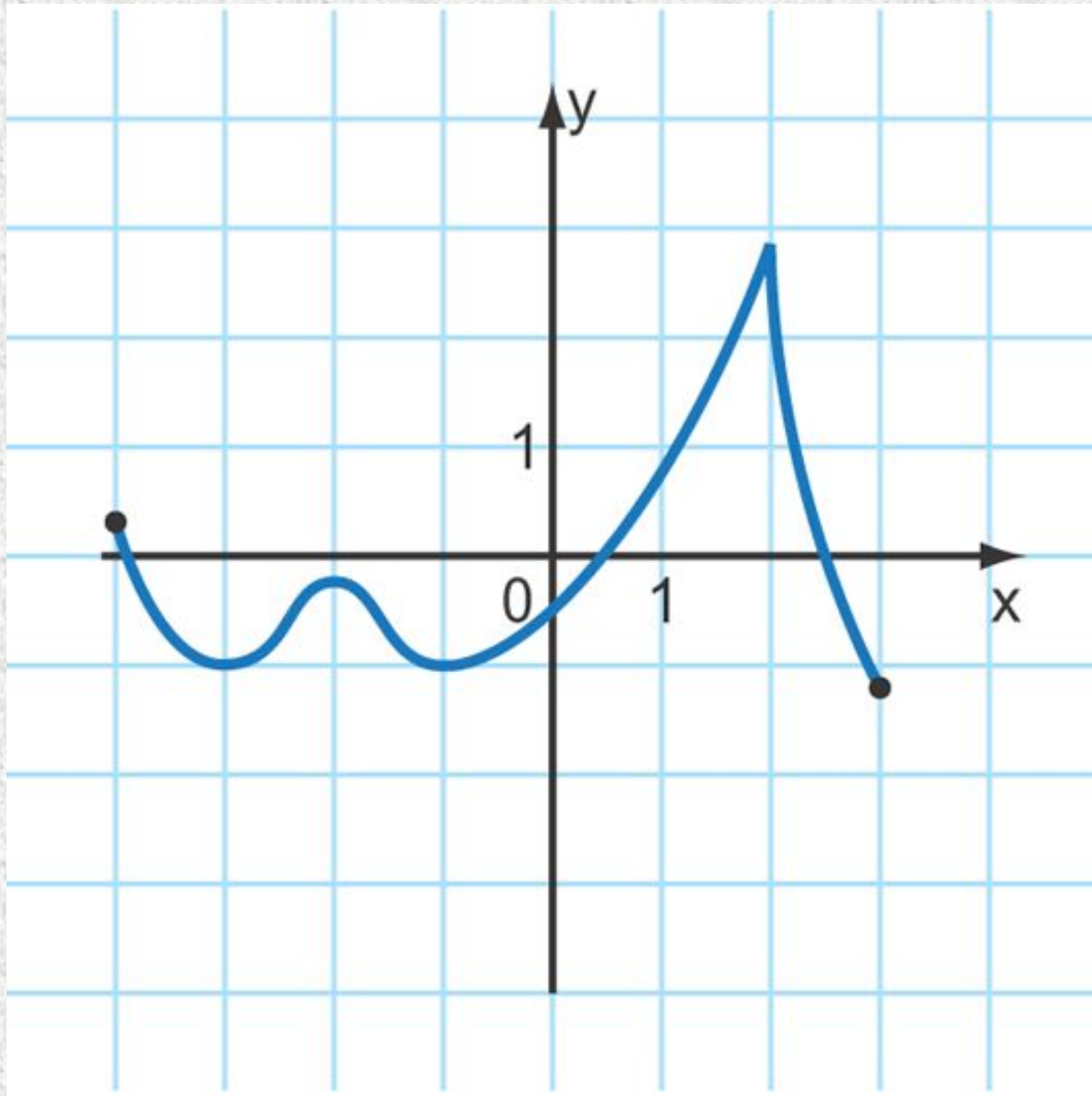
- Область определения
- Область значений
- Нули функции
- Знакопостоянство
- Монотонность
- Наибольшее и наименьшее значение функции

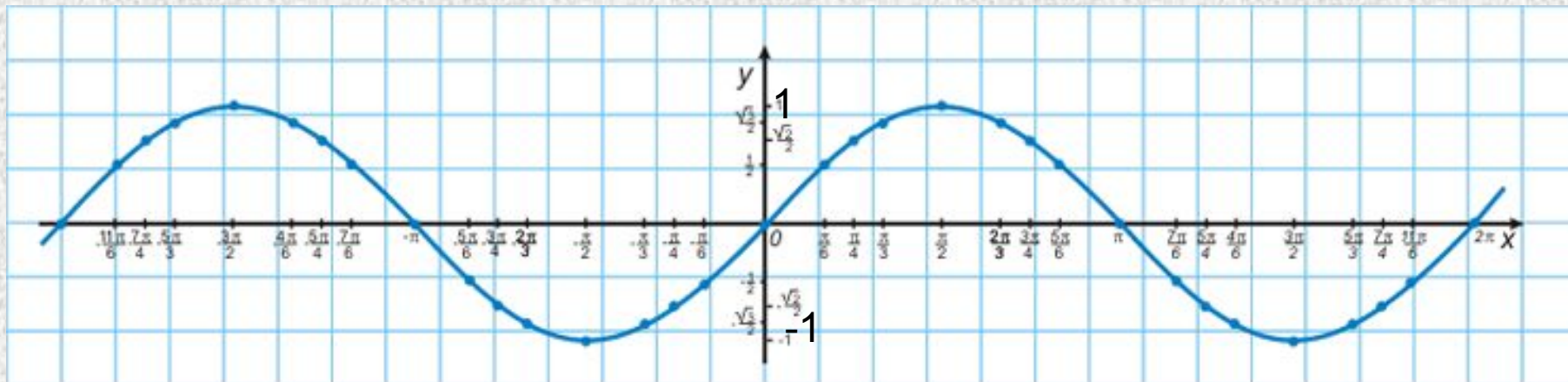
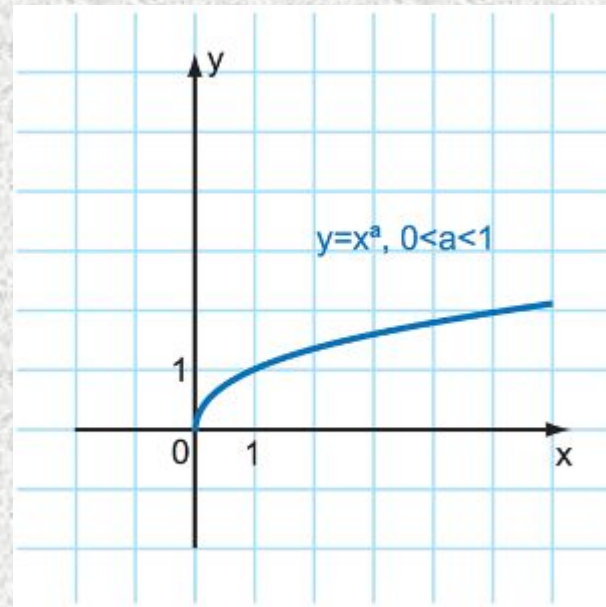
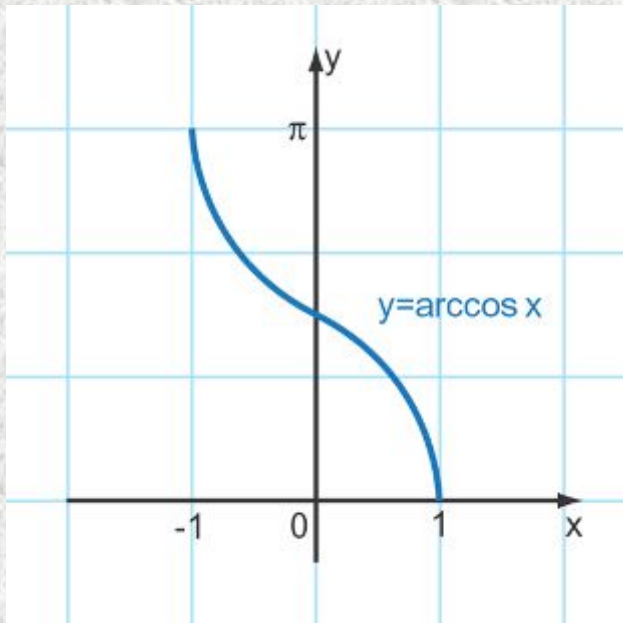


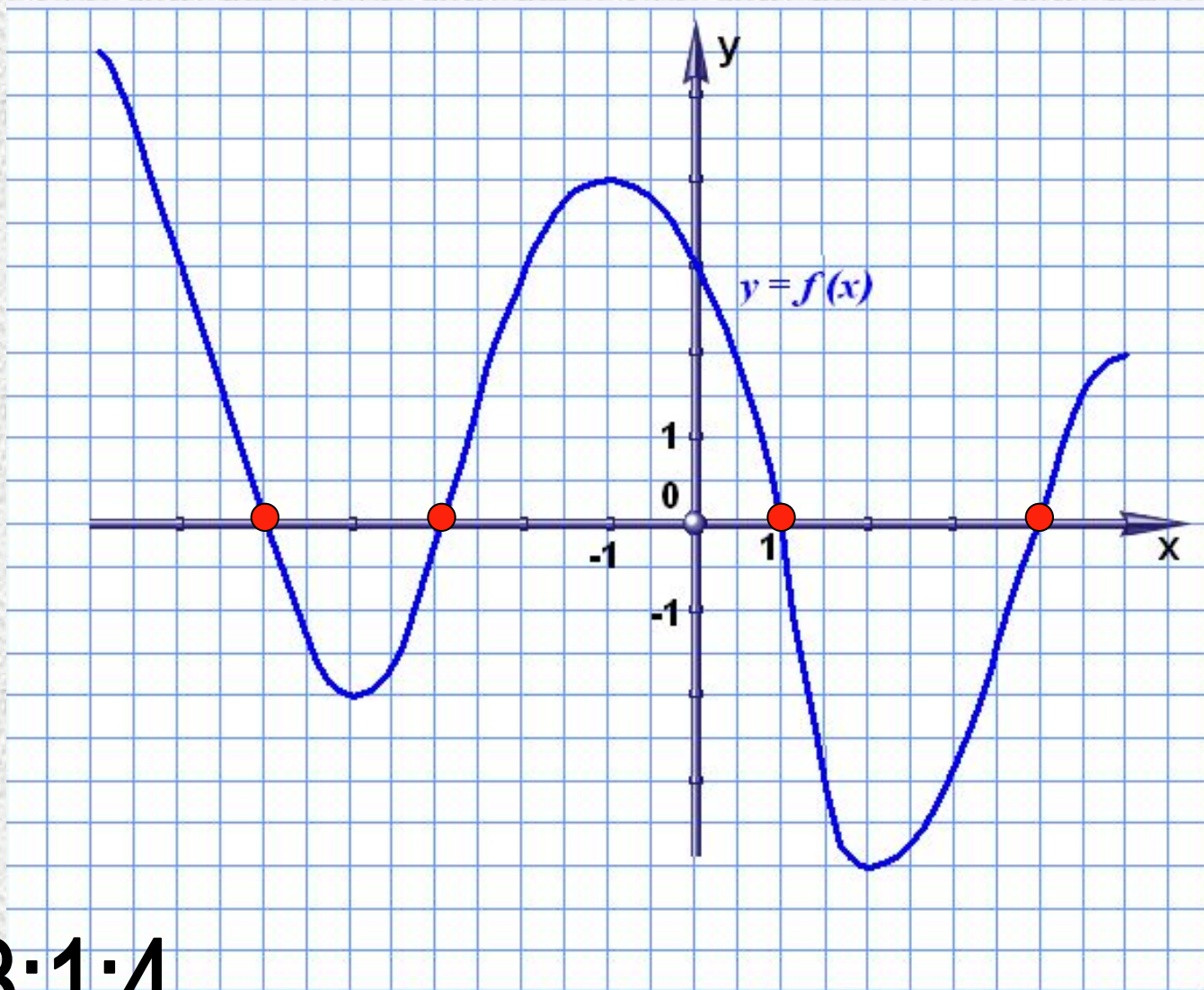
$[-9; 7]$



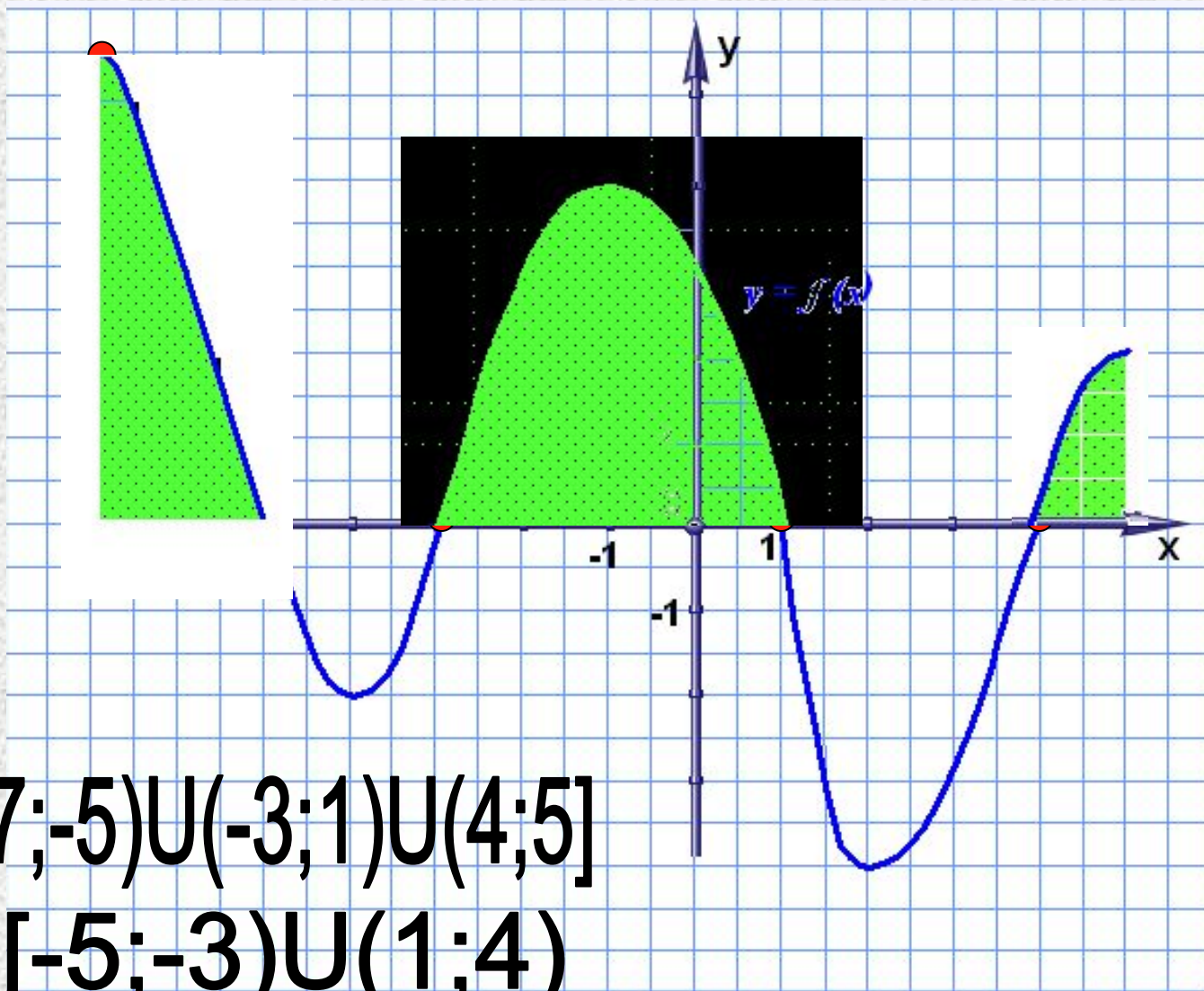
$[-6; 8]$





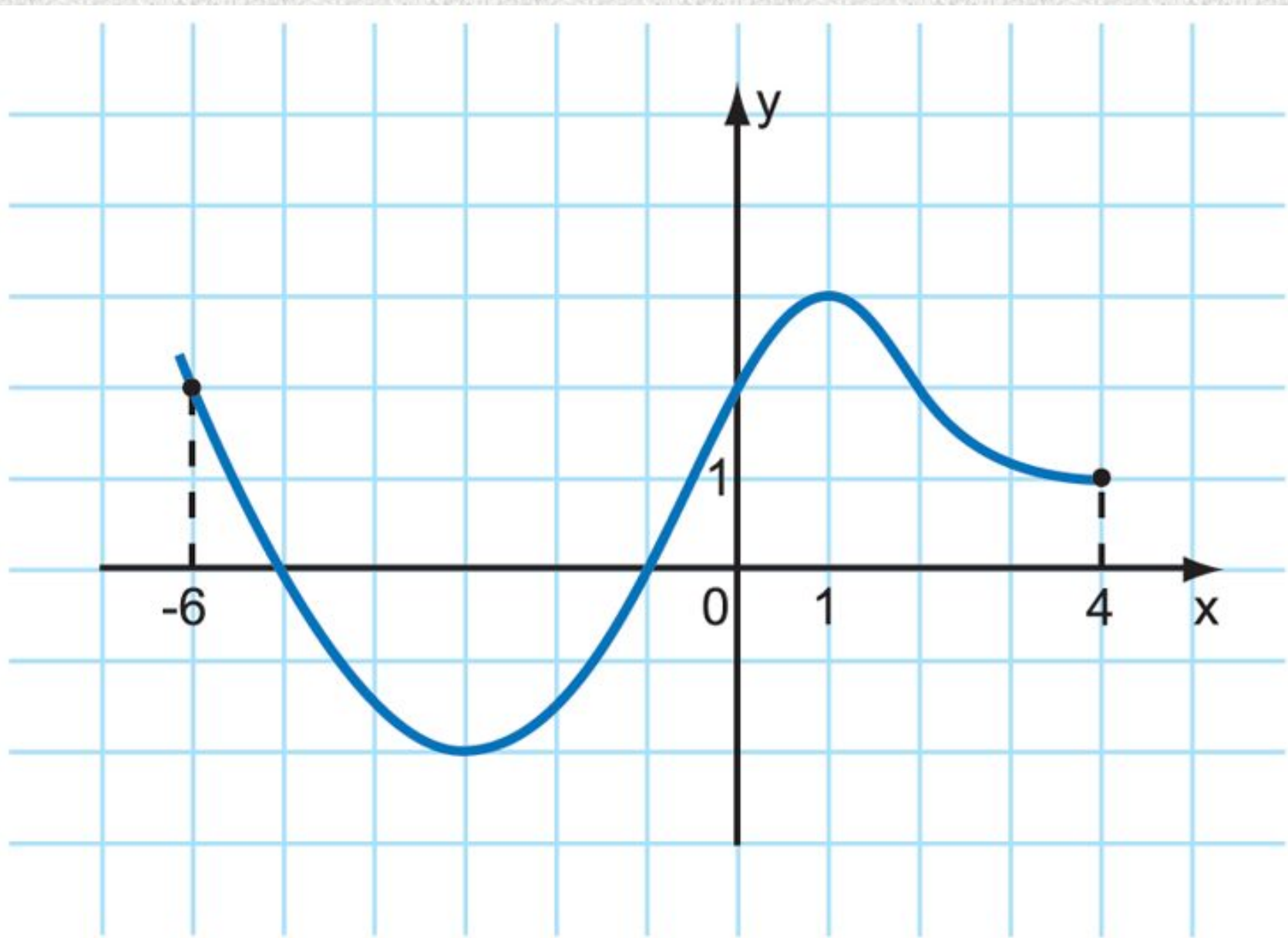


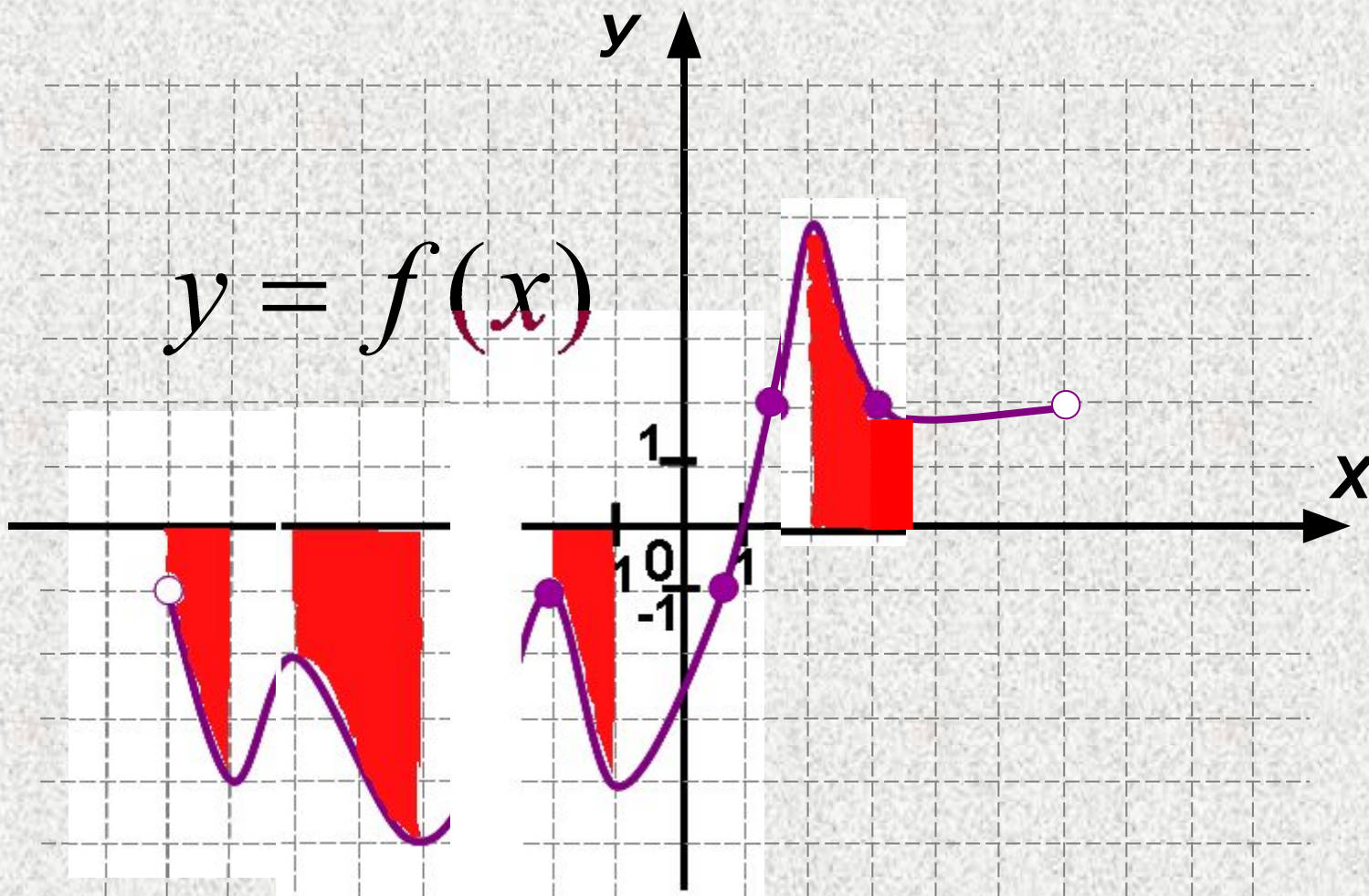
-5;-3;1;4



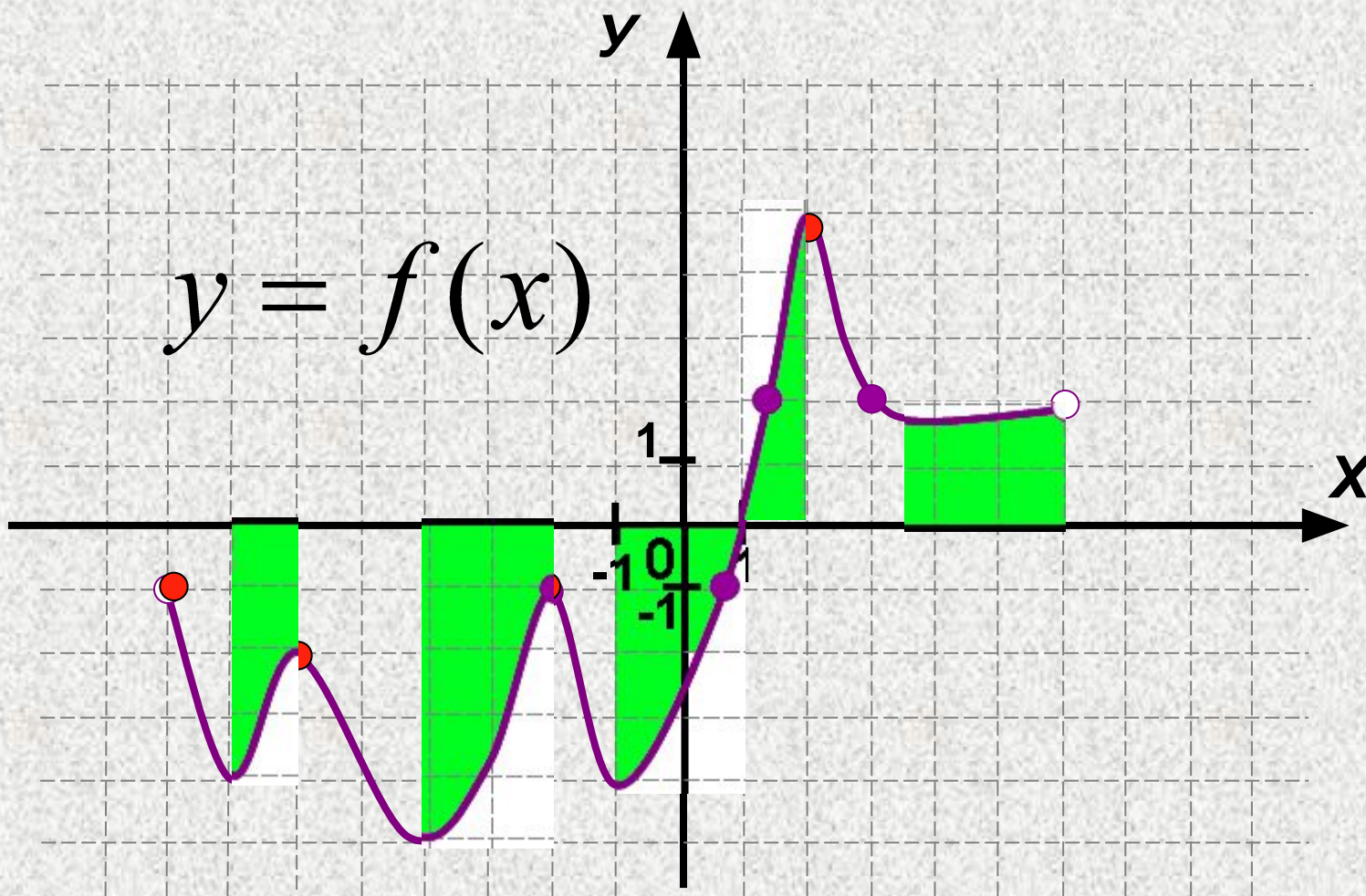
$$y > 0 \quad [-7; -5) \cup (-3; 1) \cup (4; 5]$$

$$y < 0 \quad [-5; -3) \cup (1; 4)$$

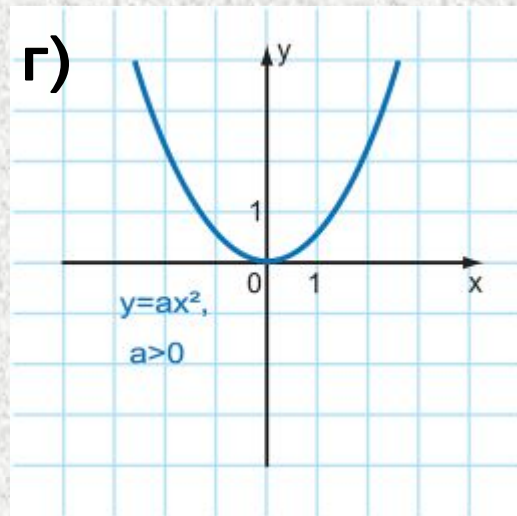
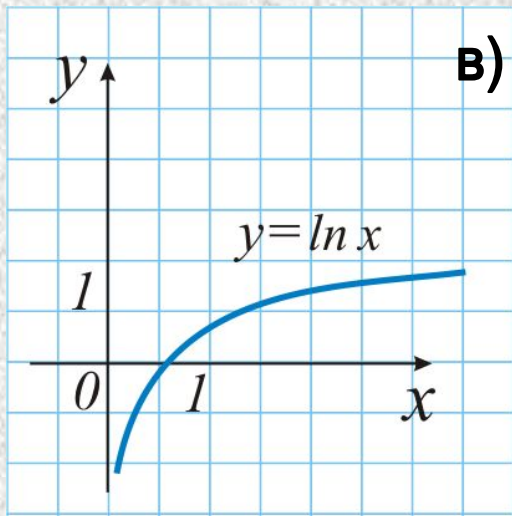
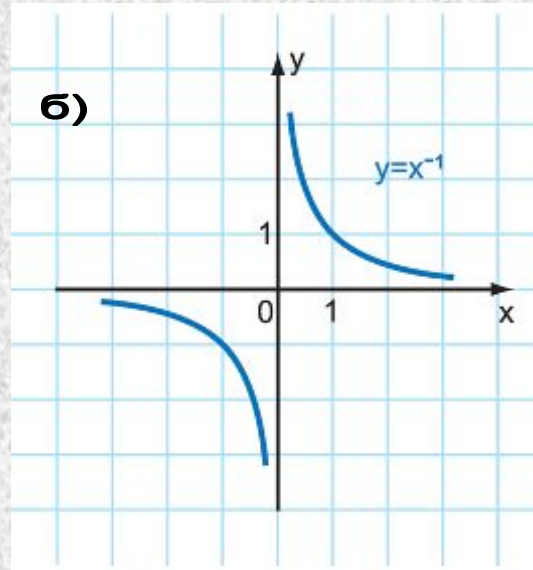
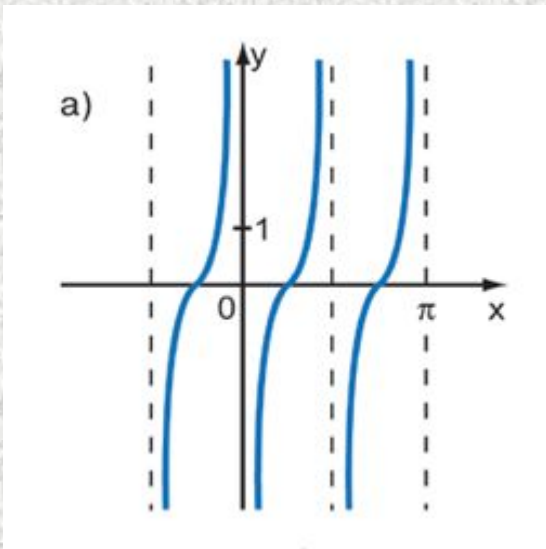


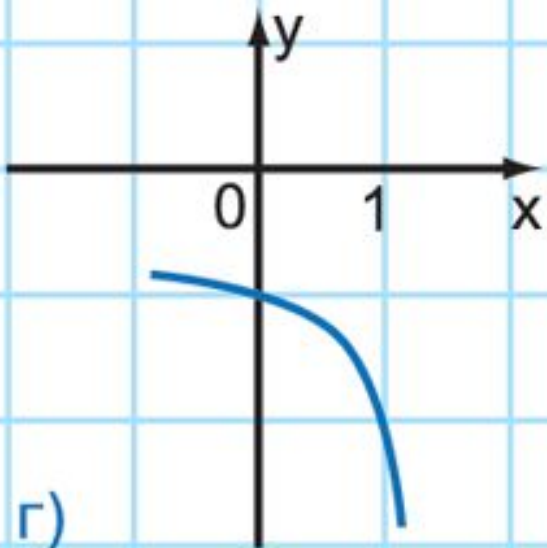
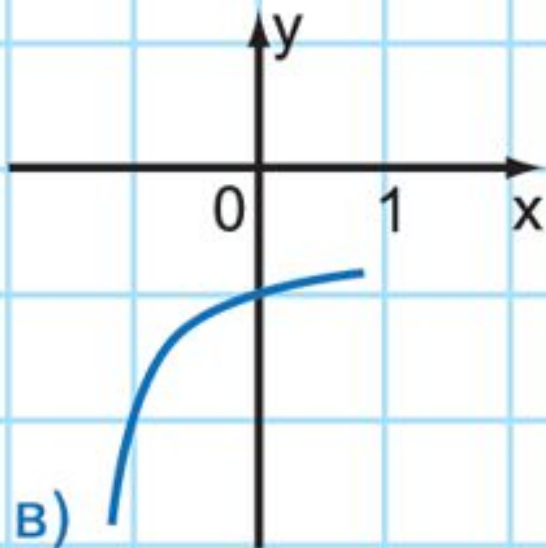
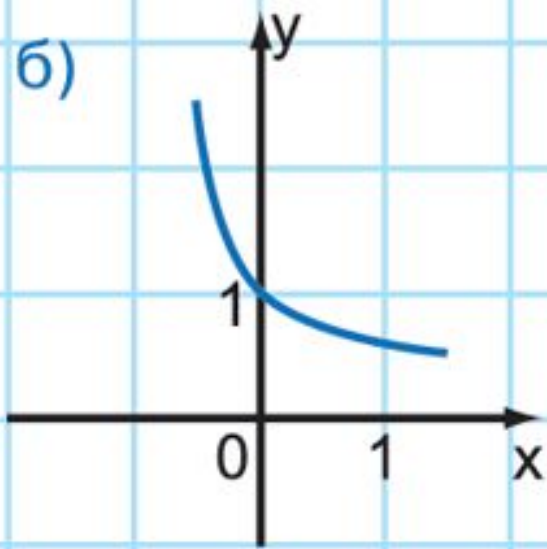
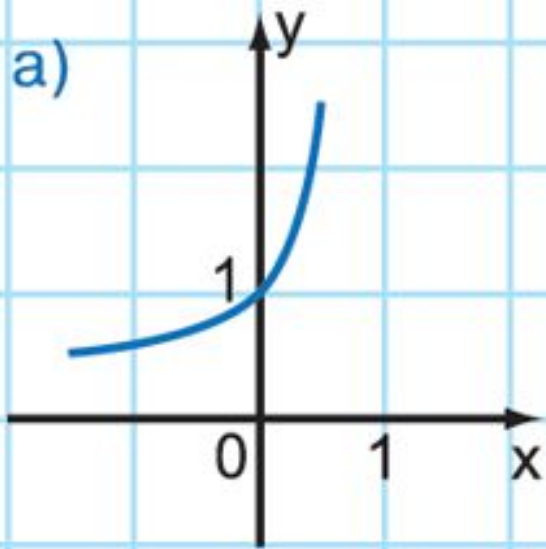


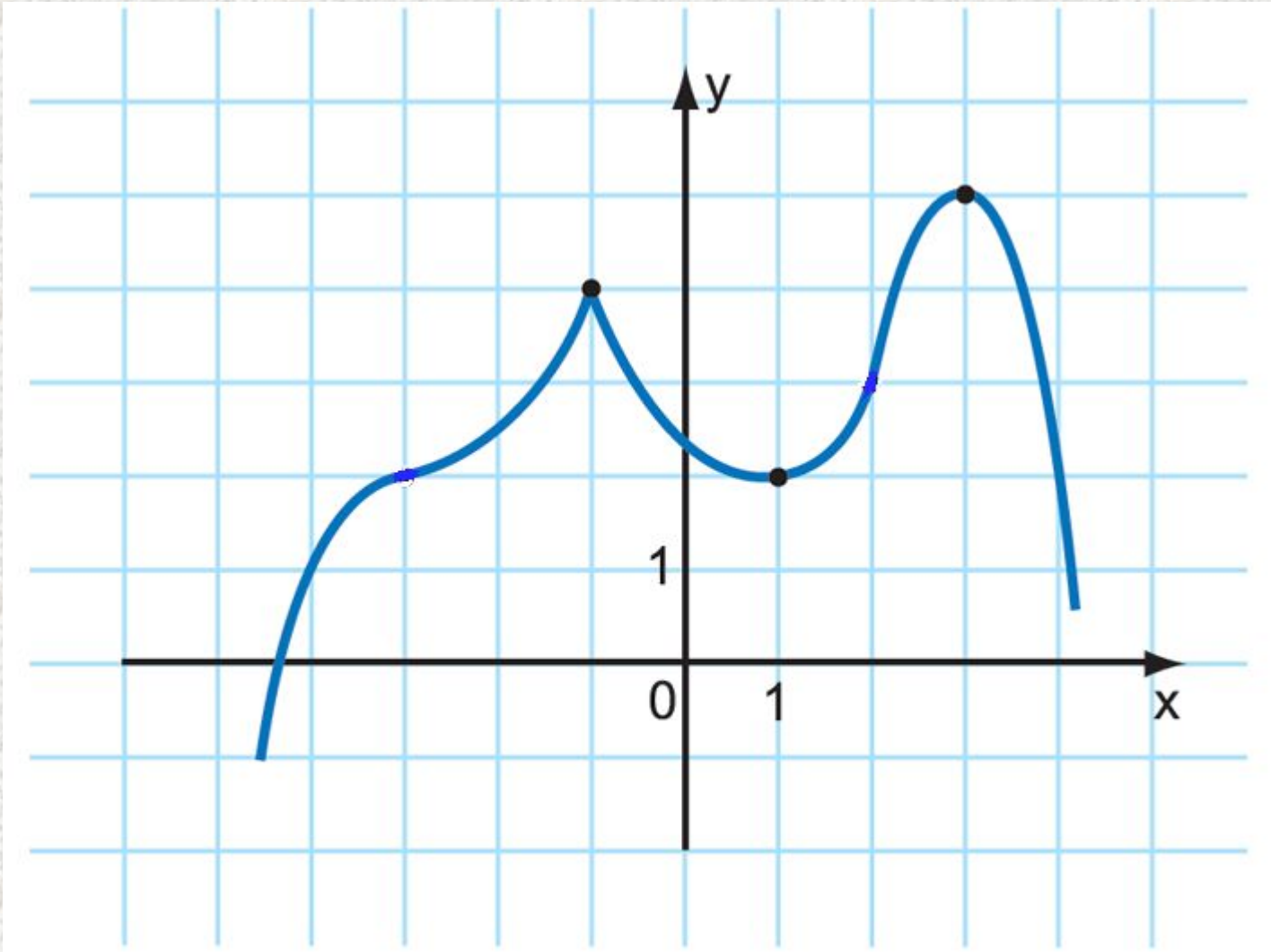
убывает $(-8; -7]; [-6; -4]; [-2; -1]; [2; 3, 5]$

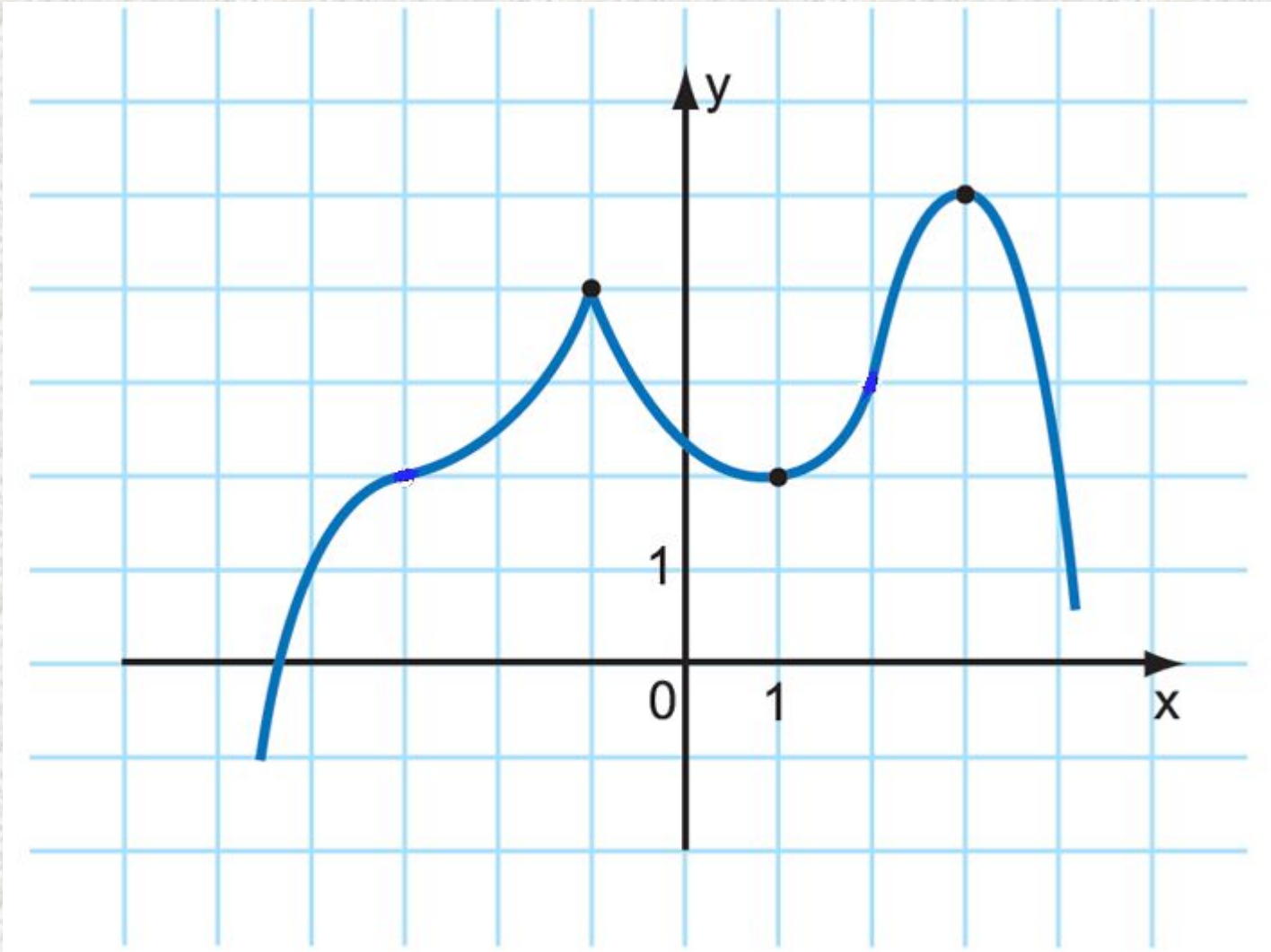


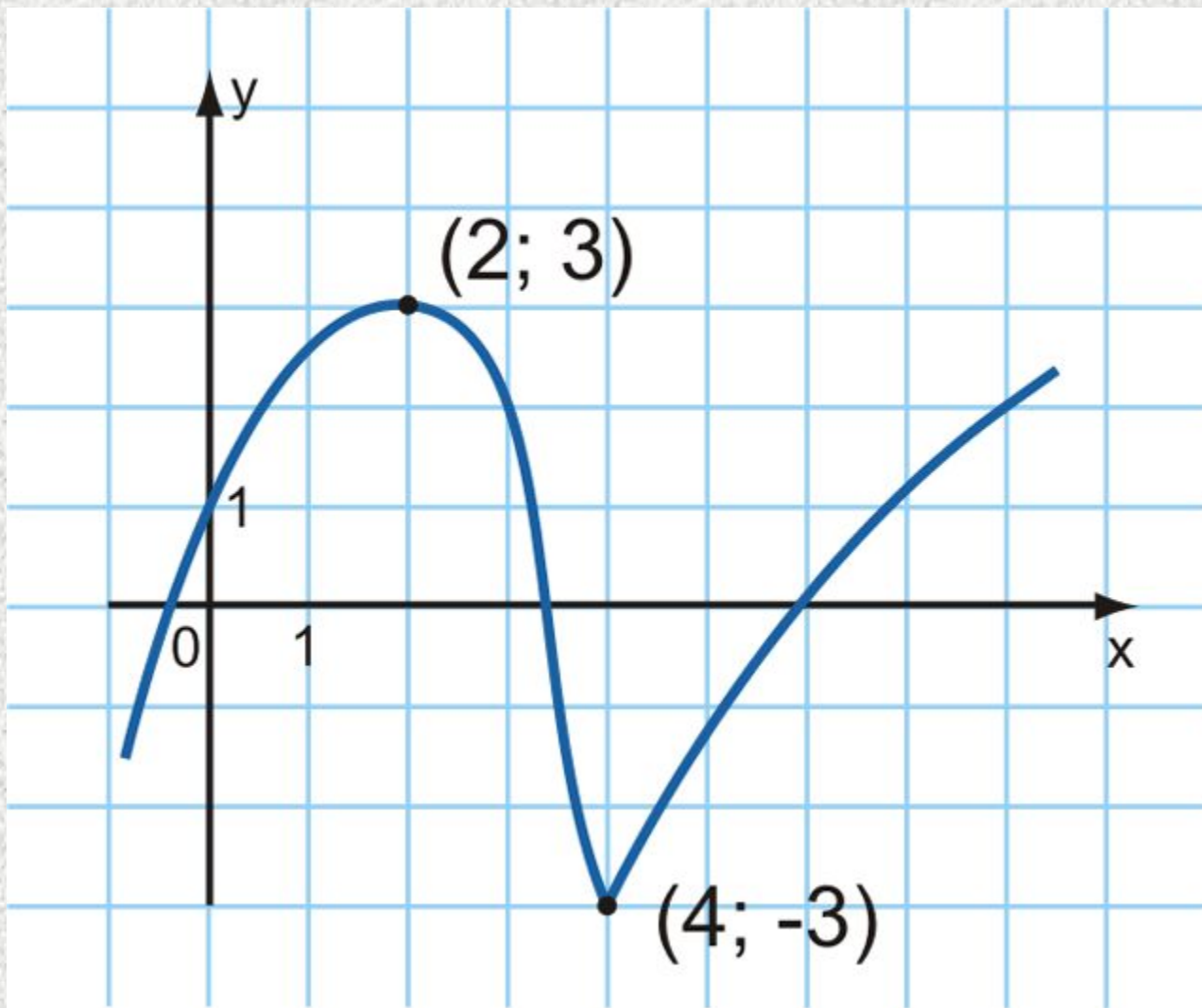
возрастает $[-7; -6]; [-4; -2]; [-1; 2]; [3, 5; 6)$











$$D(f) = (-\infty; -2) \cup (-2; +\infty)$$

