

Тема урока:

Закрепление изученного.

Числа от 1 до 10.



A winter scene featuring snow-covered trees and a large orange number 10 overlaid on the image. The background shows a dense forest of trees heavily laden with snow, with a prominent evergreen tree on the right side. The number 10 is rendered in a bold, orange, sans-serif font with a white outline, positioned centrally over the scene. The overall atmosphere is serene and wintry.

10

10

9

1

8

2

7

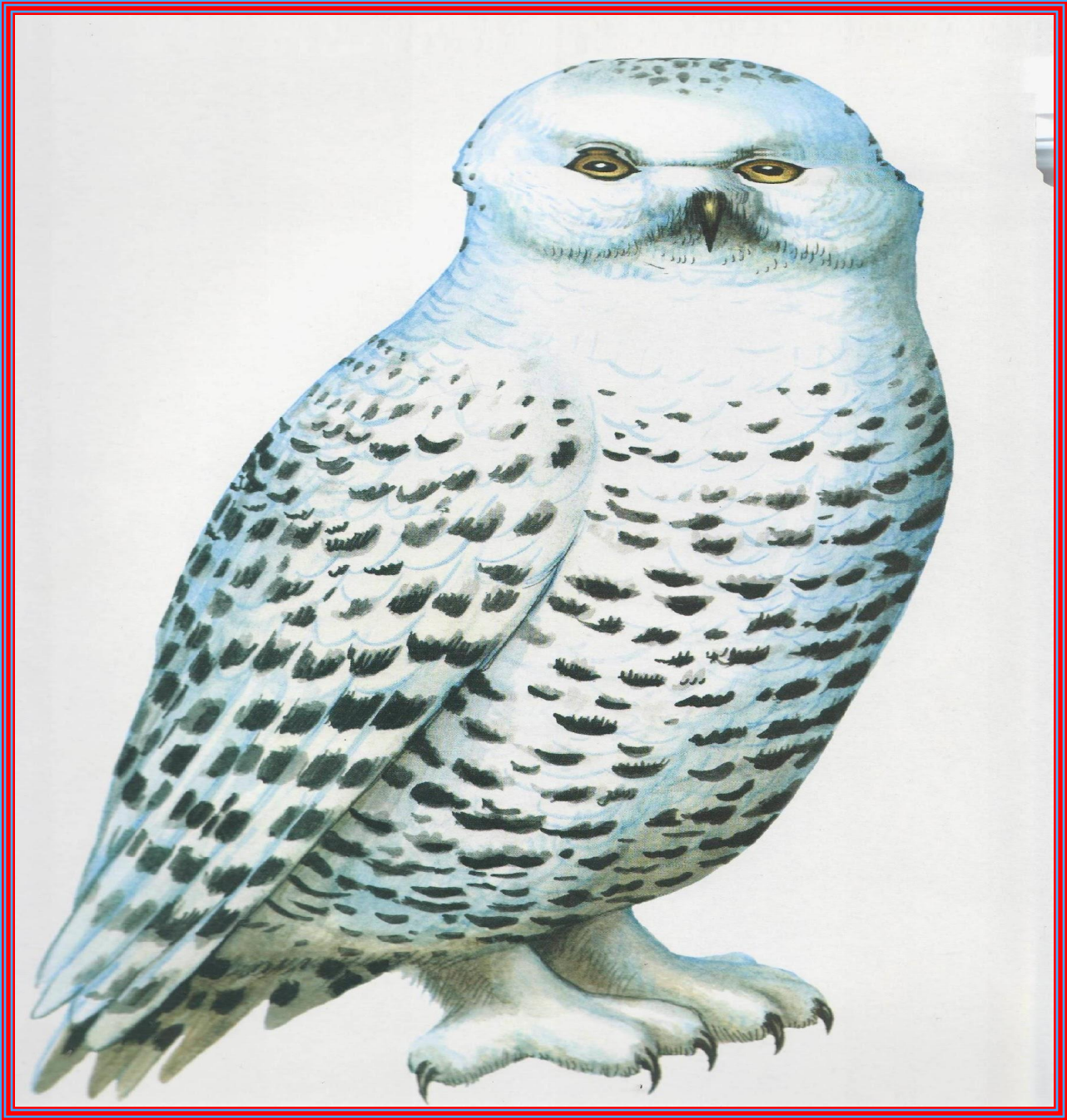
3

6

4

5

5









10

7

9

5

4

6

8

1

3

2

**1, 2, 3, 4, 5, 6,
7, 8, 9, 10.**

**10, 9, 8, 7, 6,
5, 4, 3, 2, 1.**

**7, 5, 7, 4, 10,
7, 3.**





$$8^{**} = 10$$

$$6^{**} = 4$$

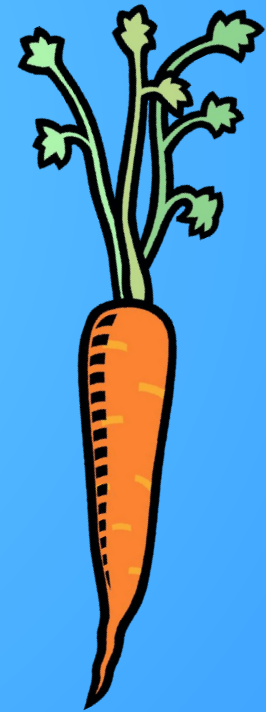
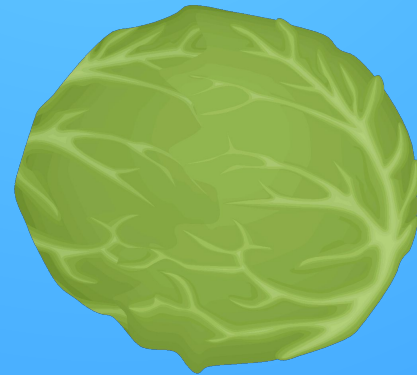
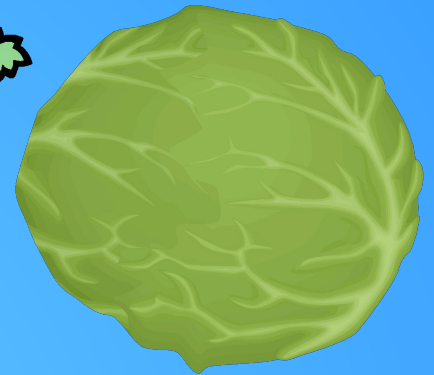
$$7^{**} = 6$$

$$8 + 2 = 10$$

$$6 - 2 = 4$$

$$7 - 1 = 6$$





Решение:

$$4 + 3 = 7 \text{ (ов.)}$$

Ответ: 7 овощей

6

8

7

5

1

7

1

2

4

6

2

3

1

6

3

5

3

5

2

3

4



МОЛОДЦЫ!