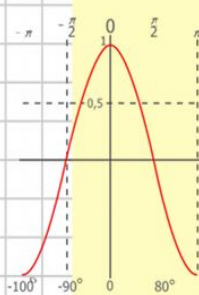
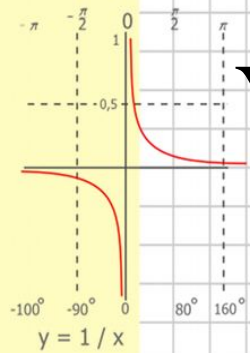
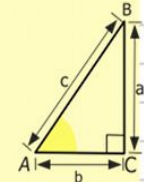
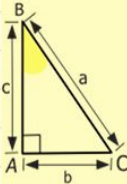
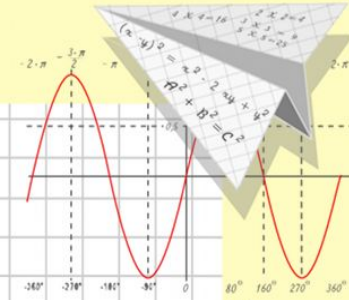
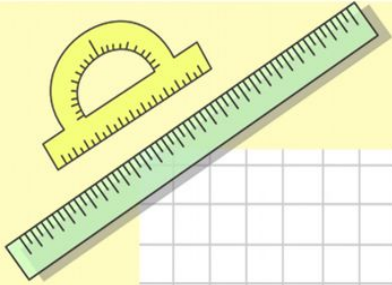


Математик

а

Урок математики в 3 классе УМК»Перспективная начальная школа»

Тема «Запись умножения на
двузначное число столбиком»



$y = \cos x$

- $2 \times 2 = 4$
- $3 \times 3 = 9$
- $4 \times 4 = 16$
- $5 \times 5 = 25$
- $6 \times 6 = 36$
- $7 \times 7 = 49$
- $8 \times 8 = 64$

$$\begin{array}{r} 2500 \\ \times 42 \\ \hline 210 \\ + 84 \\ \hline 10500 \end{array}$$

$$\frac{a}{\sin A} = \frac{b}{\sin B} = \frac{c}{\sin C}$$

$$\frac{a}{c} + \frac{b}{c} = \frac{a+b}{c}$$

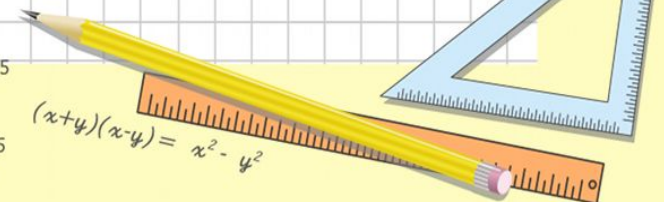
$$\sin 90^\circ = 1$$

$$\begin{cases} y = \sin 90 \\ x = 25y + 45 \end{cases}$$

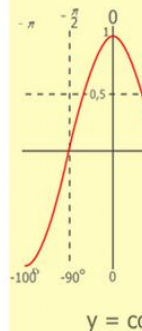
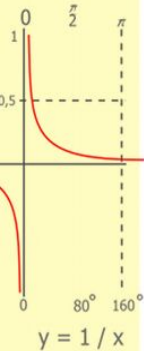
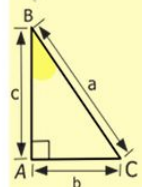
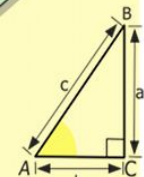
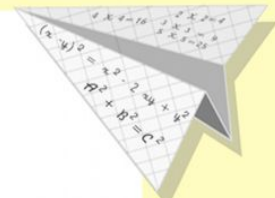
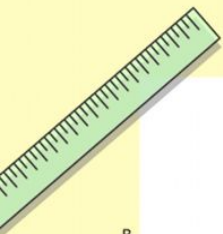
$$\begin{cases} y = 1 \\ x = 25 + 45 \end{cases}$$

$$x = 70$$

$$(x+y)(x-y) = x^2 - y^2$$

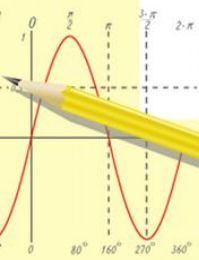


Чтоб водить корабли,
 Чтобы в небо взлететь,
 Надо многое знать,
 И при этом, и при этом,
 Вы заметьте-ка,
 Очень важная наука
 Ма-те-ма-ти-ка!



$$\begin{array}{r}
 1 \\
 2500 \\
 \times 42 \\
 \hline
 210 \\
 + 84 \\
 \hline
 10500
 \end{array}$$

- 2 x 2 = 4
- 3 x 3 = 9
- 4 x 4 = 16
- 5 x 5 = 25
- 6 x 6 = 36
- 7 x 7 = 49
- 8 x 8 = 64
- 9 x 9 = 81



$$\frac{a}{A} = \frac{b}{\sin B} = \frac{c}{\sin C}$$

$$\frac{a}{c} + \frac{b}{c} = \frac{a+b}{c}$$

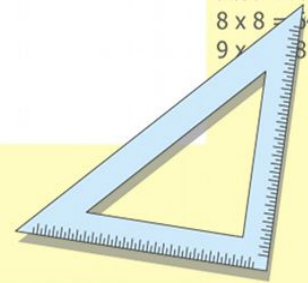
$$\sin 90^\circ = 1$$



$$\begin{cases}
 y = \sin 90 \\
 x = 25y + 45
 \end{cases}$$

$$\begin{cases}
 y = 1 \\
 x = 25 + 45 \\
 \hline
 x = 70
 \end{cases}$$

$$(x+y)(x-y) = x^2 - y^2$$



Проверка домашнего задания

Т.2 №25 стр. 13

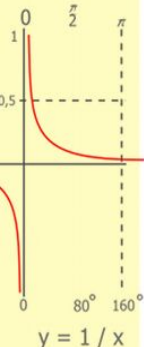
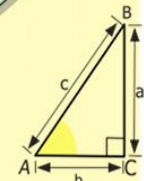
$$287 \cdot 64 = 287 \cdot (60 + 4) = 1148 + 11480 = 12628$$

$$287 \cdot 46 = 287 \cdot (40 + 6) = 11480 + 1722 = 13202$$

Т.2 №27 стр. 14

$$63 \cdot 11 - 63 = 630 \text{ (чел.)}$$

Ответ: на 630 жильцов меньше в трехэтажном доме, чем в девятиэтажном.



$$\begin{array}{r} 2500 \\ \times 42 \\ \hline 2100 \\ + 8400 \\ \hline 105000 \end{array}$$



$$\frac{a}{\sin A} = \frac{b}{\sin B} = \frac{c}{\sin C}$$

$$\frac{a}{c} + \frac{b}{c} = \frac{a+b}{c}$$

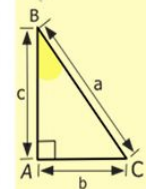
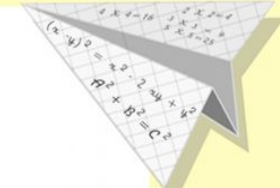
$$\sin 90^\circ = 1$$



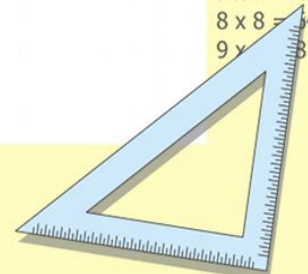
$$\begin{cases} y = \sin 90 \\ x = 25y + 45 \end{cases}$$

$$\begin{cases} y = 1 \\ x = 25 + 45 \\ \hline x = 70 \end{cases}$$

$$(x+y)(x-y) = x^2 - y^2$$

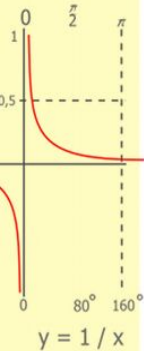
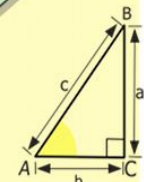
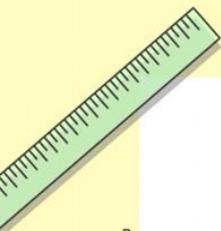


2 x 2 =	4
3 x 3 =	9
4 x 4 =	16
5 x 5 =	25
6 x 6 =	36
7 x 7 =	49
8 x 8 =	64
9 x 9 =	81



Самооценка

Уровни успешности	Шкала в баллах
Не достигнут необходимый уровень	0
Необходимый уровень («хорошо»)	-1 балл успешности (помощь или ошибка) -2 балла успешности
Программный уровень («отлично»)	-3 балла успешности (помощь или ошибка) -4 балла успешности
Максимальный уровень («превосходно»)	-5 баллов успешности (помощь или ошибка) -6 баллов успешности



$$\begin{array}{r} 1 \\ \times 2500 \\ \hline 210 \\ + 84 \\ \hline 10500 \end{array}$$



$$\frac{a}{A} = \frac{b}{\sin B} = \frac{c}{\sin C}$$

$$\frac{a}{c} + \frac{b}{c} = \frac{a+b}{c}$$

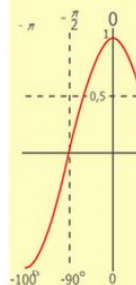
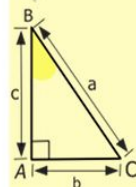
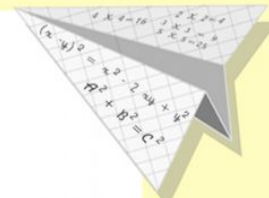
$$\sin 90^\circ = 1$$



$$\begin{cases} y = \sin 90 \\ x = 25y + 45 \end{cases}$$

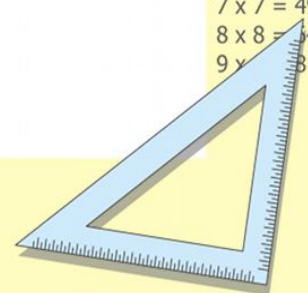
$$\begin{cases} y = 1 \\ x = 25 + 45 \\ \hline x = 70 \end{cases}$$

$$(x+y)(x-y) = x^2 - y^2$$



$$y = \cos$$

$$\begin{array}{l} 2 \times 2 = 4 \\ 3 \times 3 = 9 \\ 4 \times 4 = 16 \\ 5 \times 5 = 25 \\ 6 \times 6 = 36 \\ 7 \times 7 = 49 \\ 8 \times 8 = 64 \\ 9 \times 9 = 81 \end{array}$$



Поставь знаки $>$, $<$, $=$

$$9 \cdot (5+4) \dots 9 \cdot 5 + 4$$

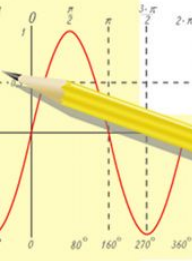
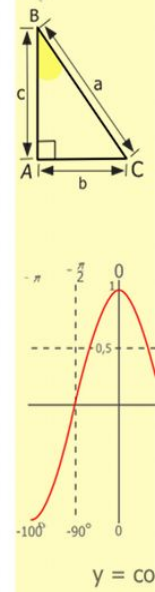
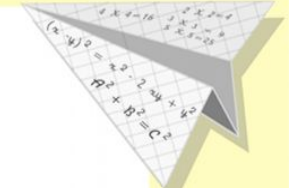
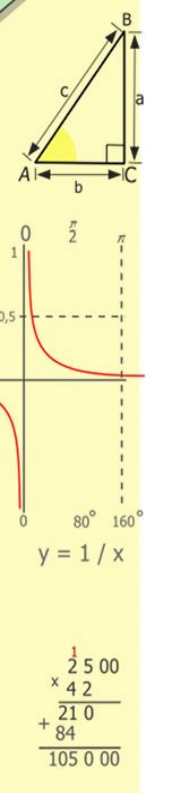
$$24 : 8 + 4 \dots 24 : (8 + 4)$$

$$3 \cdot (5+4) - 8 \dots 3 \cdot 5 + 4$$

$$8 : (9-7) - 1 \dots 4 \cdot 4 - 8$$

$$8 \cdot 7 - 16 \dots 8 \cdot (7-2)$$

$$63 : 7 + 2 \dots 63 : (7+2)$$



$$\frac{a}{\sin A} = \frac{b}{\sin B} = \frac{c}{\sin C}$$

$$\frac{a}{c} + \frac{b}{c} = \frac{a+b}{c}$$

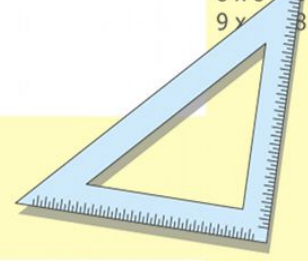
$$\sin 90^\circ = 1$$

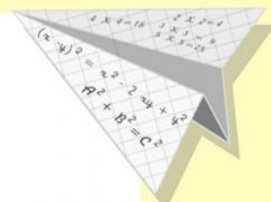
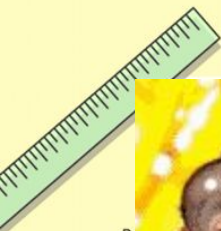


$$\begin{cases} y = \sin 90 \\ x = 25y + 45 \end{cases}$$

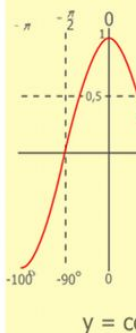
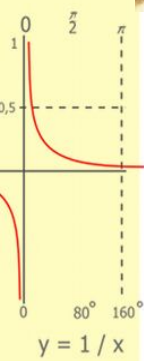
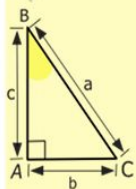
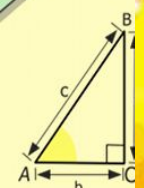
$$\begin{cases} y = 1 \\ x = 25 + 45 \\ \hline x = 70 \end{cases}$$

$$(x+y)(x-y) = x^2 - y^2$$





1 клетка – 7 обезьян
 2 клетка - 3 обезьяны
 3 клетка – 2 обезьяны



$$7+3+6$$

$$5 \cdot 3 + 5 \cdot 6 + 5 \cdot 7$$

$$5 \cdot 6 + 5 \cdot 7$$

$$5 \cdot 3$$

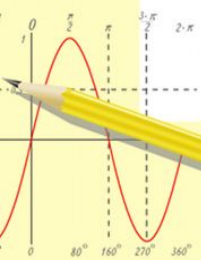
$$5 \cdot 7$$

$$5 \cdot 6 \quad 5 \cdot 6 - 5 \cdot 3$$

$$5 \cdot 7 - 5 \cdot 6$$

$$\begin{array}{r} 2500 \\ \times 42 \\ \hline 210 \\ + 84 \\ \hline 10500 \end{array}$$

$$\begin{array}{l} 2 \times 2 = 4 \\ 3 \times 3 = 9 \\ 4 \times 4 = 16 \\ 5 \times 5 = 25 \\ 6 \times 6 = 36 \\ 7 \times 7 = 49 \\ 8 \times 8 = 64 \\ 9 \times 9 = 81 \end{array}$$



$$\frac{a}{\sin A} = \frac{b}{\sin B} = \frac{c}{\sin C}$$

$$\frac{a}{c} + \frac{b}{c} = \frac{a+b}{c}$$

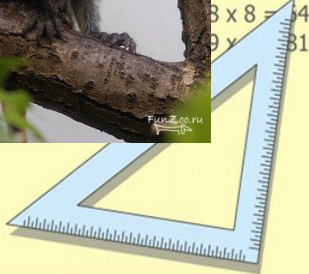
$$\sin 90^\circ = 1$$



$$\begin{cases} y = \sin 90 \\ x = 25y + 45 \end{cases}$$

$$\begin{cases} y = 1 \\ x = 25 + 45 \\ \hline x = 70 \end{cases}$$

$$(x+y)(x-y) = x^2 - y^2$$



Аня



Маша

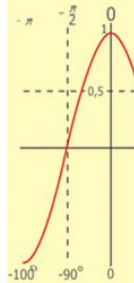
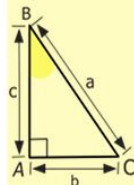
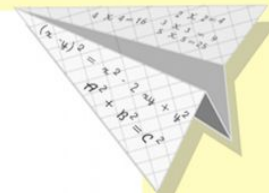
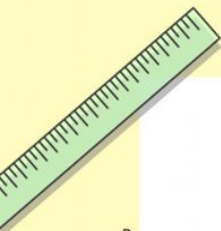


Ваня



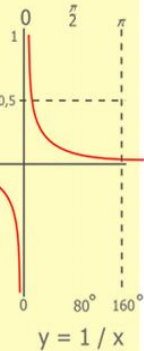
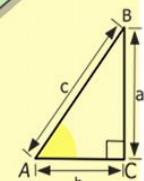
Михаил

Иван Петрович



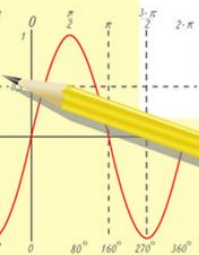
y = cos

- 2 x 2 = 4
- 3 x 3 = 9
- 4 x 4 = 16
- 5 x 5 = 25
- 6 x 6 = 36
- 7 x 7 = 49
- 8 x 8 = 64
- 9 x 9 = 81



y = 1 / x

$$\begin{array}{r} 2500 \\ \times 42 \\ \hline 210 \\ + 84 \\ \hline 105000 \end{array}$$



$$\frac{a}{\sin A} = \frac{b}{\sin B} = \frac{c}{\sin C}$$

$$\frac{a}{c} + \frac{b}{c} = \frac{a+b}{c}$$

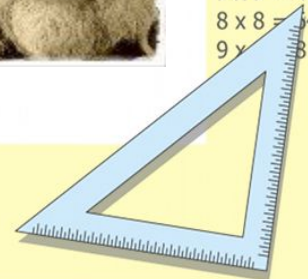
$$\sin 90^\circ = 1$$



$$\begin{cases} y = \sin 90 \\ x = 25y + 45 \end{cases}$$

$$\begin{cases} y = 1 \\ x = 25 + 45 \\ \hline x = 70 \end{cases}$$

$$(x+y)(x-y) = x^2 - y^2$$



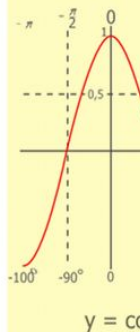
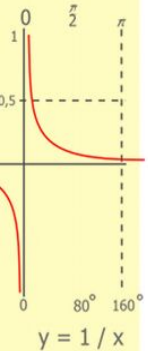
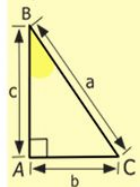
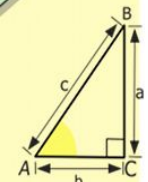
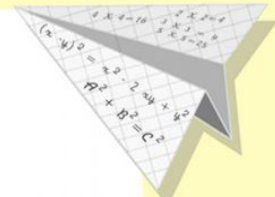
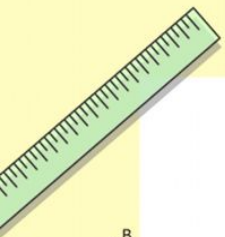
Найди значение выражений

$$253 \cdot 4$$

$$267 \cdot 3$$

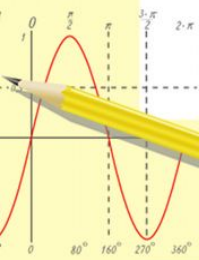
$$146 \cdot 24$$

$$4162 \cdot 2$$



$$\begin{array}{r} 2500 \\ \times 42 \\ \hline 210 \\ + 84 \\ \hline 105000 \end{array}$$

$$\begin{array}{l} 2 \times 2 = 4 \\ 3 \times 3 = 9 \\ 4 \times 4 = 16 \\ 5 \times 5 = 25 \\ 6 \times 6 = 36 \\ 7 \times 7 = 49 \\ 8 \times 8 = 64 \\ 9 \times 9 = 81 \end{array}$$



$$\frac{a}{\sin A} = \frac{b}{\sin B} = \frac{c}{\sin C}$$

$$\frac{a}{c} + \frac{b}{c} = \frac{a+b}{c}$$

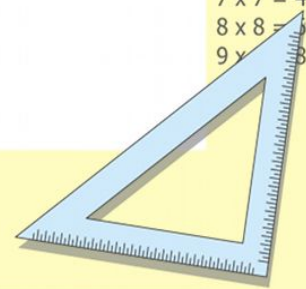
$$\sin 90^\circ = 1$$



$$\begin{cases} y = \sin 90 \\ x = 25y + 45 \end{cases}$$

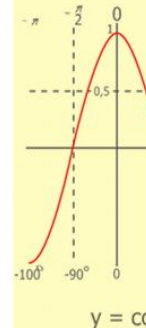
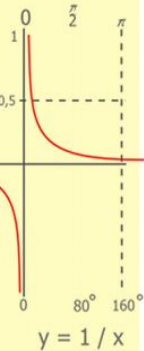
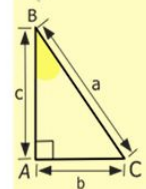
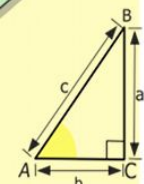
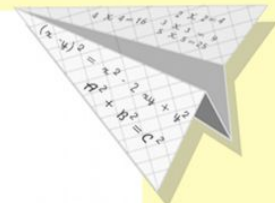
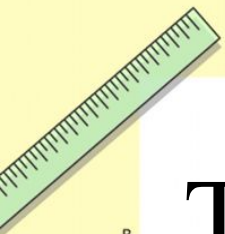
$$\begin{cases} y = 1 \\ x = 25 + 45 \\ \hline x = 70 \end{cases}$$

$$(x+y)(x-y) = x^2 - y^2$$



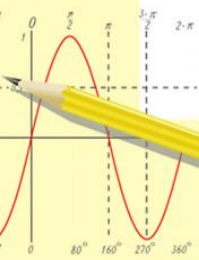
Тема урока: « Запись умножения на двузначное число столбиком»

Цель: научиться записывать и выполнять умножение на двузначное число столбиком.



$$\begin{array}{r} 1 \\ \times 2500 \\ \hline 2500 \\ + 42 \\ \hline 210 \\ + 84 \\ \hline 105000 \end{array}$$

$$\begin{array}{l} 2 \times 2 = 4 \\ 3 \times 3 = 9 \\ 4 \times 4 = 16 \\ 5 \times 5 = 25 \\ 6 \times 6 = 36 \\ 7 \times 7 = 49 \\ 8 \times 8 = 64 \\ 9 \times 9 = 81 \end{array}$$



$$\frac{a}{\sin A} = \frac{b}{\sin B} = \frac{c}{\sin C}$$

$$\frac{a}{c} + \frac{b}{c} = \frac{a+b}{c}$$

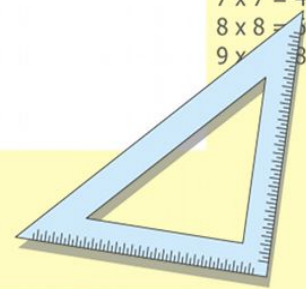
$$\sin 90^\circ = 1$$



$$\begin{cases} y = \sin 90 \\ x = 25y + 45 \end{cases}$$

$$\begin{cases} y = 1 \\ x = 25 + 45 \\ \hline x = 70 \end{cases}$$

$$(x+y)(x-y) = x^2 - y^2$$



Решение учебной задачи

$$146 \cdot 24$$

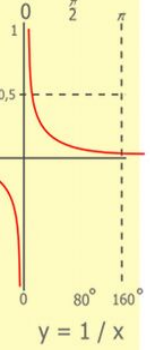
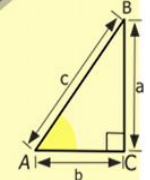
$$274 \cdot 36$$

$$231 \cdot 45$$

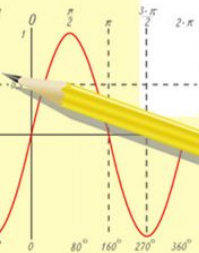
$$631 \cdot 15$$

$$523 \cdot 41$$

$$132 \cdot 23$$



$$\begin{array}{r} 1 \ 2 \ 5 \ 00 \\ \times 42 \\ \hline 210 \\ + 84 \\ \hline 105000 \end{array}$$



$$\frac{a}{\sin A} = \frac{b}{\sin B} = \frac{c}{\sin C}$$

$$\frac{a}{c} + \frac{b}{c} = \frac{a+b}{c}$$

$$\sin 90^\circ = 1$$

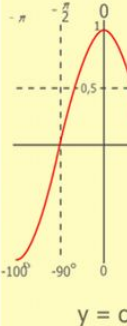
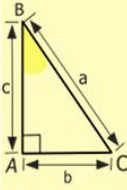
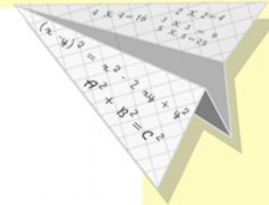


$$\begin{cases} y = \sin 90 \\ x = 25y + 45 \end{cases}$$

$$\begin{cases} y = 1 \\ x = 25 + 45 \end{cases}$$

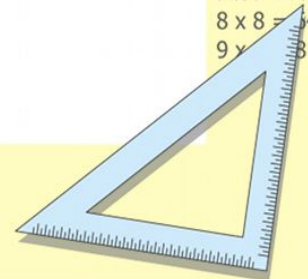
$$x = 70$$

$$(x+y)(x-y) = x^2 - y^2$$



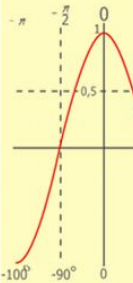
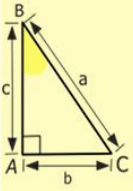
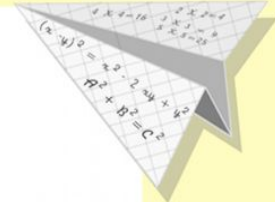
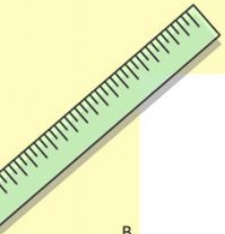
$$y = \cos$$

- $2 \times 2 = 4$
- $3 \times 3 = 9$
- $4 \times 4 = 16$
- $5 \times 5 = 25$
- $6 \times 6 = 36$
- $7 \times 7 = 49$
- $8 \times 8 = 64$
- $9 \times 9 = 81$



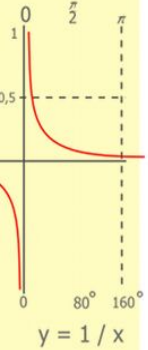
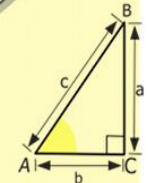
Физминутка

Руки вверх поднимем - раз
Выше носа, выше глаз.
Прямо руки вверх держать
Не качаться. не дрожать.
Три - опустили руки вниз,
Стой на месте не вертись.
Вверх раз, два, три, четыре, вниз!
Повторяем, не ленись!
Будем делать повороты
Выполняйте все с охотой.
Раз - налево поворот,
Два - теперь наоборот.
Так, ничуть, не торопясь,
Повторяем 8 раз.



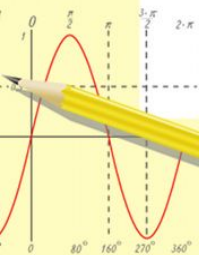
$$y = \cos$$

- 2 x 2 = 4
- 3 x 3 = 9
- 4 x 4 = 16
- 5 x 5 = 25
- 6 x 6 = 36
- 7 x 7 = 49
- 8 x 8 = 64
- 9 x 9 = 81



$$y = 1/x$$

$$\begin{array}{r} 1 \\ \times 2500 \\ \hline 210 \\ + 84 \\ \hline 10500 \end{array}$$



$$\frac{a}{A} = \frac{b}{\sin B} = \frac{c}{\sin C}$$

$$\frac{a}{c} + \frac{b}{c} = \frac{a+b}{c}$$

$$\sin 90^\circ = 1$$

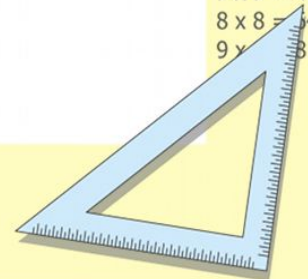


$$\begin{cases} y = \sin 90 \\ x = 25y + 45 \end{cases}$$

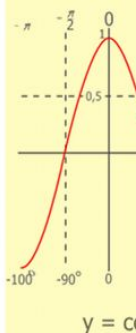
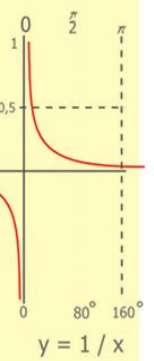
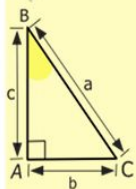
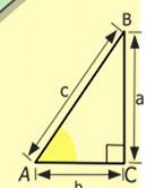
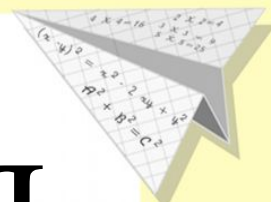
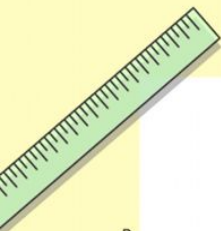
$$\begin{cases} y = 1 \\ x = 25 + 45 \end{cases}$$

$$x = 70$$

$$(x+y)(x-y) = x^2 - y^2$$



Самостоятельная работа в парах



$$\begin{array}{r} 1 \\ \times 2500 \\ \hline 210 \\ + 84 \\ \hline 105000 \end{array}$$



- $2 \times 2 = 4$
- $3 \times 3 = 9$
- $4 \times 4 = 16$
- $5 \times 5 = 25$
- $6 \times 6 = 36$
- $7 \times 7 = 49$
- $8 \times 8 = 64$
- $9 \times 9 = 81$



$$\frac{a}{\sin A} = \frac{b}{\sin B} = \frac{c}{\sin C}$$

$$\frac{a}{c} + \frac{b}{c} = \frac{a+b}{c}$$

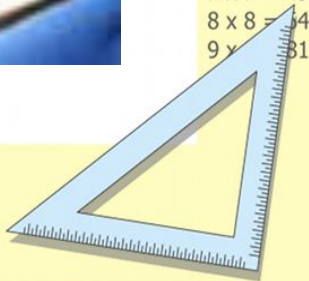
$$\sin 90^\circ = 1$$



$$\begin{cases} y = \sin 90 \\ x = 25y + 45 \end{cases}$$

$$\begin{cases} y = 1 \\ x = 25 + 45 \\ \hline x = 70 \end{cases}$$

$$(x+y)(x-y) = x^2 - y^2$$

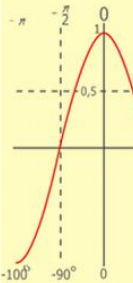
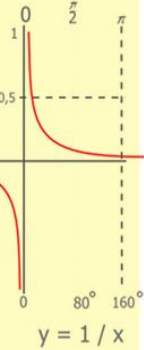
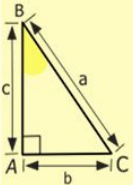
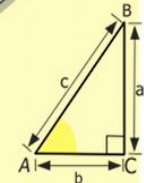
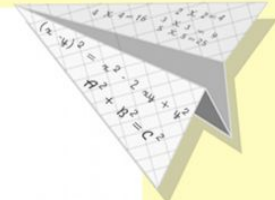
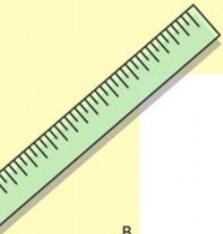


Знаю и умею

Учебник № 47 стр. 21

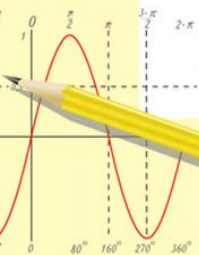
Учебник № 45 стр. 20

Тетрадь № 2 стр. 16 № 34.



$$\begin{array}{r} 1 \\ 2500 \\ \times 42 \\ \hline 210 \\ + 84 \\ \hline 10500 \end{array}$$

- $2 \times 2 = 4$
- $3 \times 3 = 9$
- $4 \times 4 = 16$
- $5 \times 5 = 25$
- $6 \times 6 = 36$
- $7 \times 7 = 49$
- $8 \times 8 = 64$
- $9 \times 9 = 81$



$$\frac{a}{A} = \frac{b}{\sin B} = \frac{c}{\sin C}$$

$$\frac{a}{c} + \frac{b}{c} = \frac{a+b}{c}$$

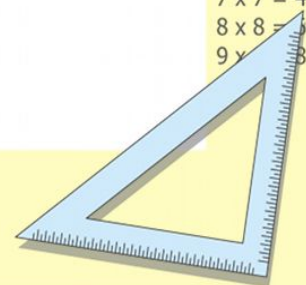
$$\sin 90^\circ = 1$$



$$\begin{cases} y = \sin 90 \\ x = 25y + 45 \end{cases}$$

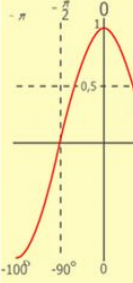
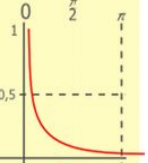
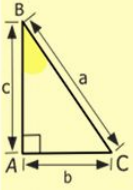
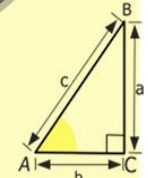
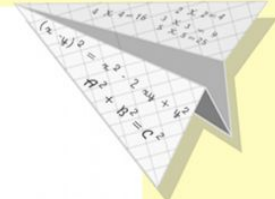
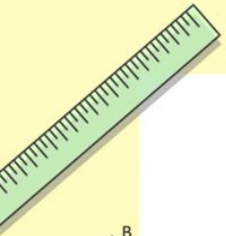
$$\begin{cases} y = 1 \\ x = 25 + 45 \\ \hline x = 70 \end{cases}$$

$$(x+y)(x-y) = x^2 - y^2$$



Рефлексия

- Какая была тема урока?
- Какую цель мы перед собой ставили?
- Можно ли сказать, что мы сегодня хорошо научились решать такого вида примеры?



$$y = 1/x$$

$$y = \cos$$

$$\begin{array}{r} 2500 \\ \times 42 \\ \hline 2100 \\ + 8400 \\ \hline 105000 \end{array}$$

$$\begin{array}{l} 2 \times 2 = 4 \\ 3 \times 3 = 9 \\ 4 \times 4 = 16 \\ 5 \times 5 = 25 \\ 6 \times 6 = 36 \\ 7 \times 7 = 49 \\ 8 \times 8 = 64 \\ 9 \times 9 = 81 \end{array}$$



$$\frac{a}{\sin A} = \frac{b}{\sin B} = \frac{c}{\sin C}$$

$$\frac{a}{c} + \frac{b}{c} = \frac{a+b}{c}$$

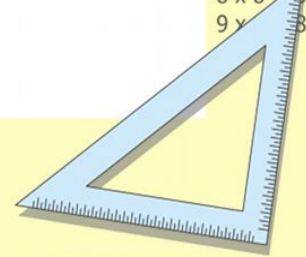
$$\sin 90^\circ = 1$$



$$\begin{cases} y = \sin 90 \\ x = 25y + 45 \end{cases}$$

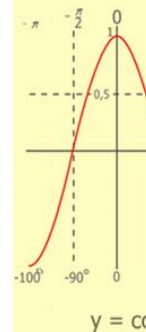
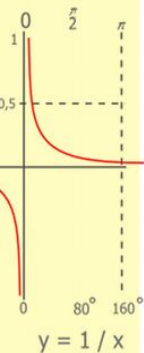
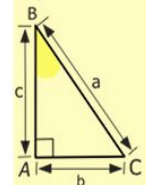
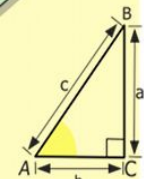
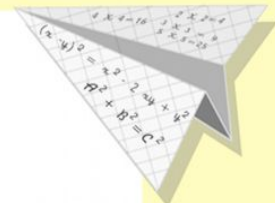
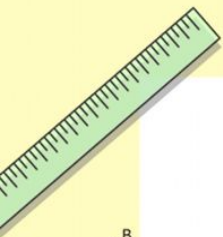
$$\begin{cases} y = 1 \\ x = 25 + 45 \\ \hline x = 70 \end{cases}$$

$$(x+y)(x-y) = x^2 - y^2$$



Домашнее задание

Т. № 2 стр. 15-16 №31, №32, №33.



$$\begin{array}{r} 1 \\ 2500 \\ \times 42 \\ \hline 210 \\ + 84 \\ \hline 10500 \end{array}$$

- $2 \times 2 = 4$
- $3 \times 3 = 9$
- $4 \times 4 = 16$
- $5 \times 5 = 25$
- $6 \times 6 = 36$
- $7 \times 7 = 49$
- $8 \times 8 = 64$
- $9 \times 9 = 81$



$$\frac{a}{\sin A} = \frac{b}{\sin B} = \frac{c}{\sin C}$$

$$\frac{a}{c} + \frac{b}{c} = \frac{a+b}{c}$$

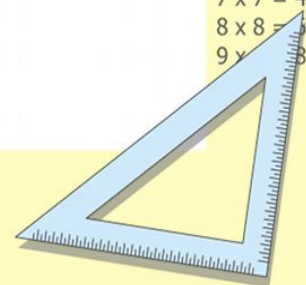
$$\sin 90^\circ = 1$$



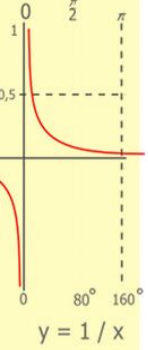
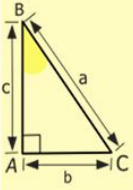
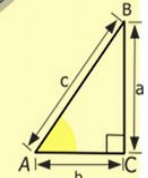
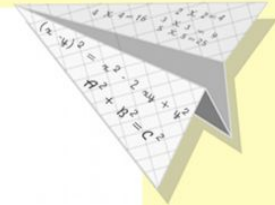
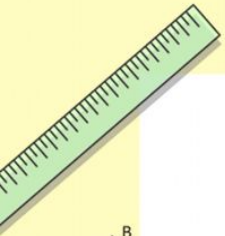
$$\begin{cases} y = \sin 90 \\ x = 25y + 45 \end{cases}$$

$$\begin{cases} y = 1 \\ x = 25 + 45 \\ \hline x = 70 \end{cases}$$

$$(x+y)(x-y) = x^2 - y^2$$

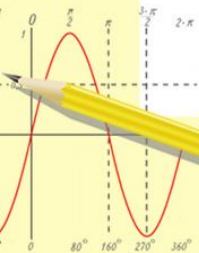


Спасибо за работу!



$$\begin{array}{r} 1 \\ 2500 \\ \times 42 \\ \hline 210 \\ + 84 \\ \hline 105000 \end{array}$$

- $2 \times 2 = 4$
- $3 \times 3 = 9$
- $4 \times 4 = 16$
- $5 \times 5 = 25$
- $6 \times 6 = 36$
- $7 \times 7 = 49$
- $8 \times 8 = 64$
- $9 \times 9 = 81$



$$\frac{a}{\sin A} = \frac{b}{\sin B} = \frac{c}{\sin C}$$

$$\frac{a}{c} + \frac{b}{c} = \frac{a+b}{c}$$

$$\sin 90^\circ = 1$$



$$\begin{cases} y = \sin 90 \\ x = 25y + 45 \end{cases}$$

$$\begin{cases} y = 1 \\ x = 25 + 45 \\ \hline x = 70 \end{cases}$$

$$(x+y)(x-y) = x^2 - y^2$$

