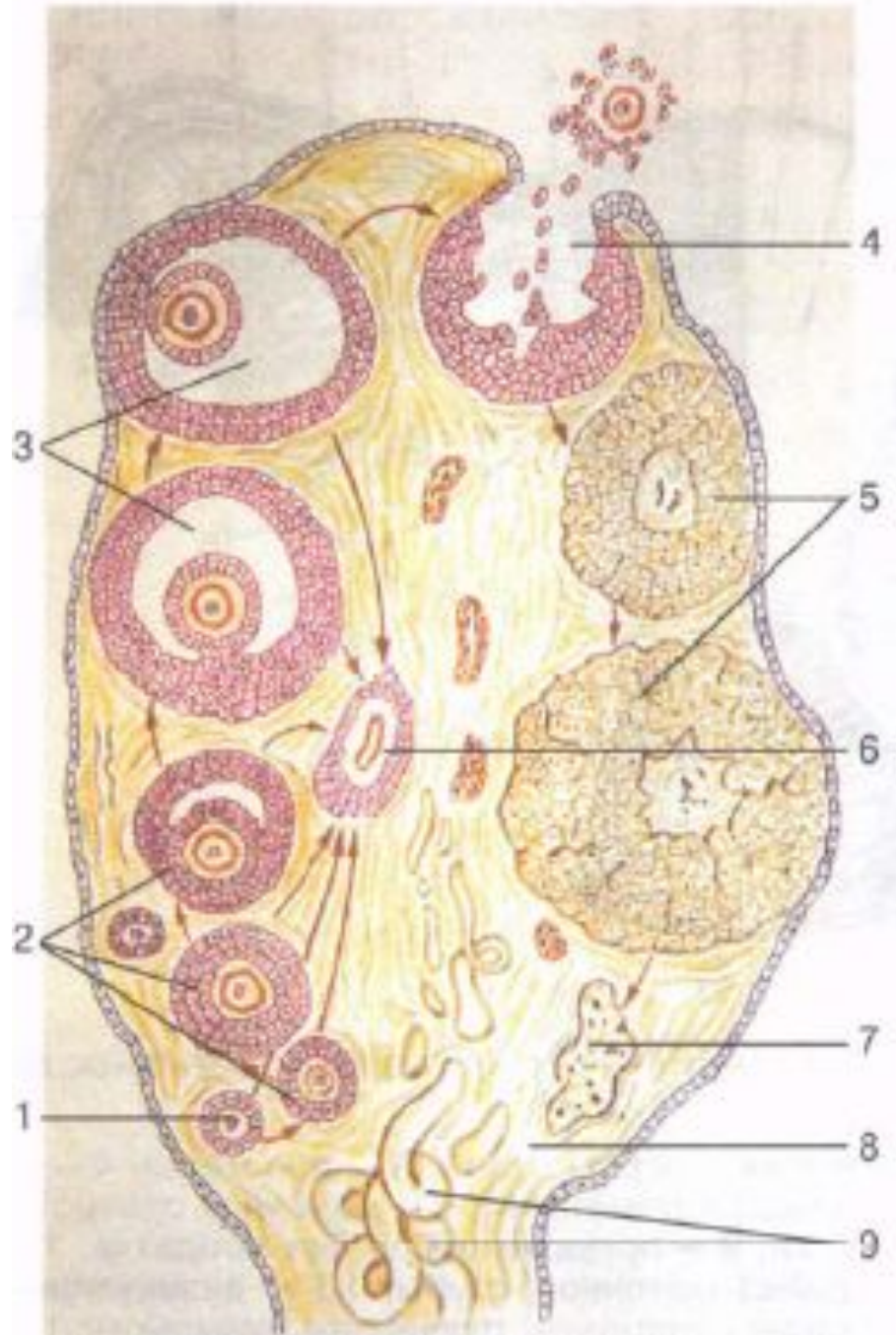
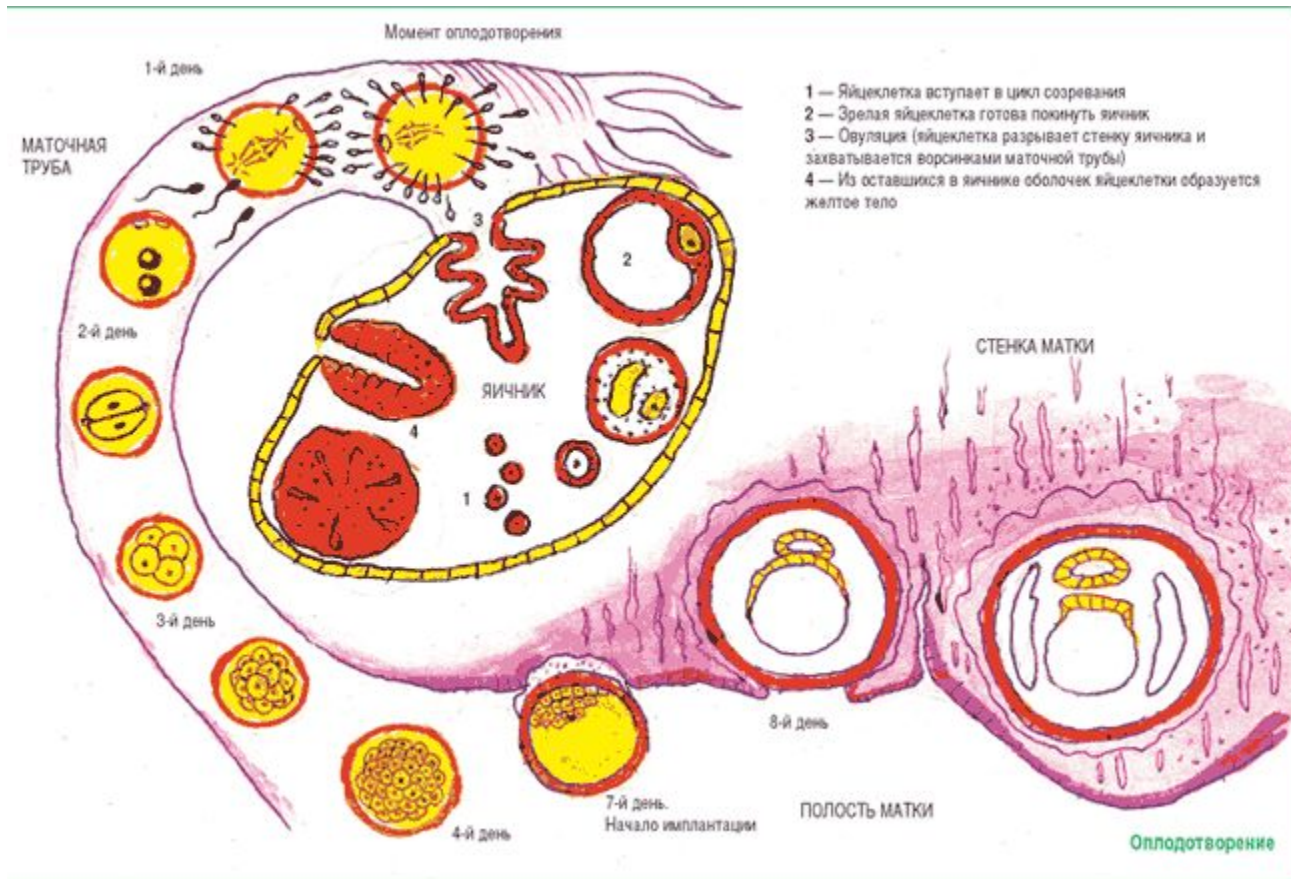
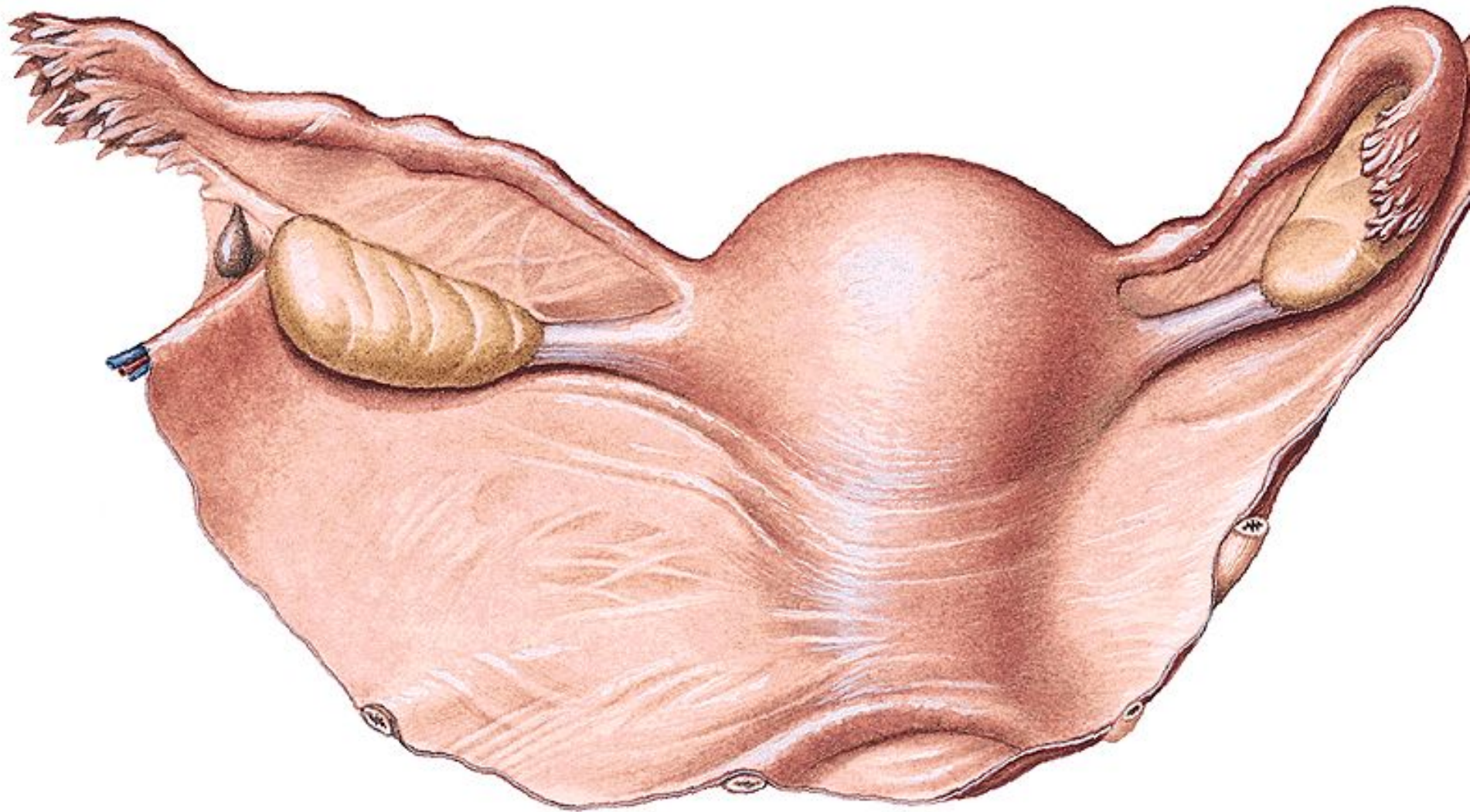


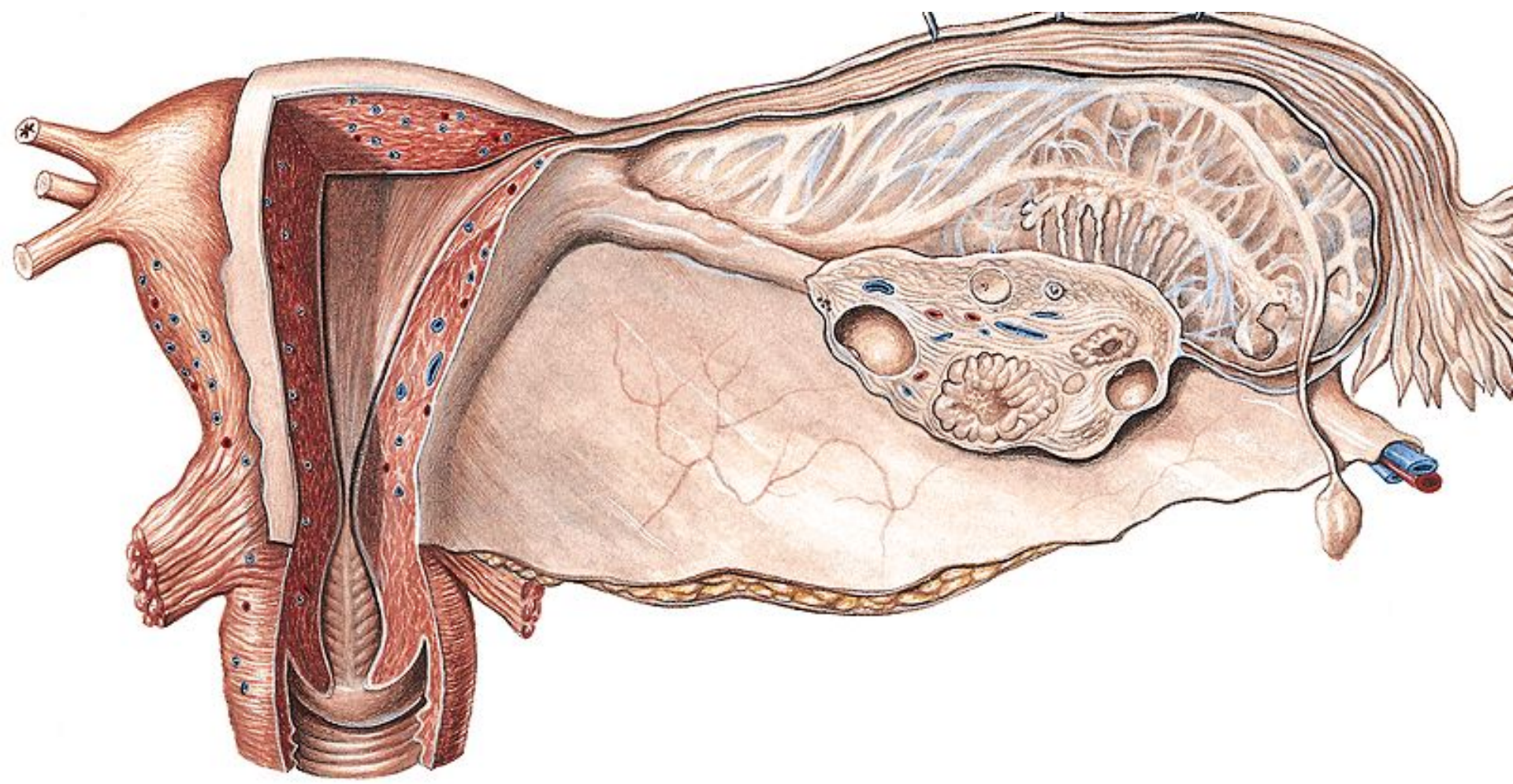
CLASSIFICATION OF FEMALE GENITALS:

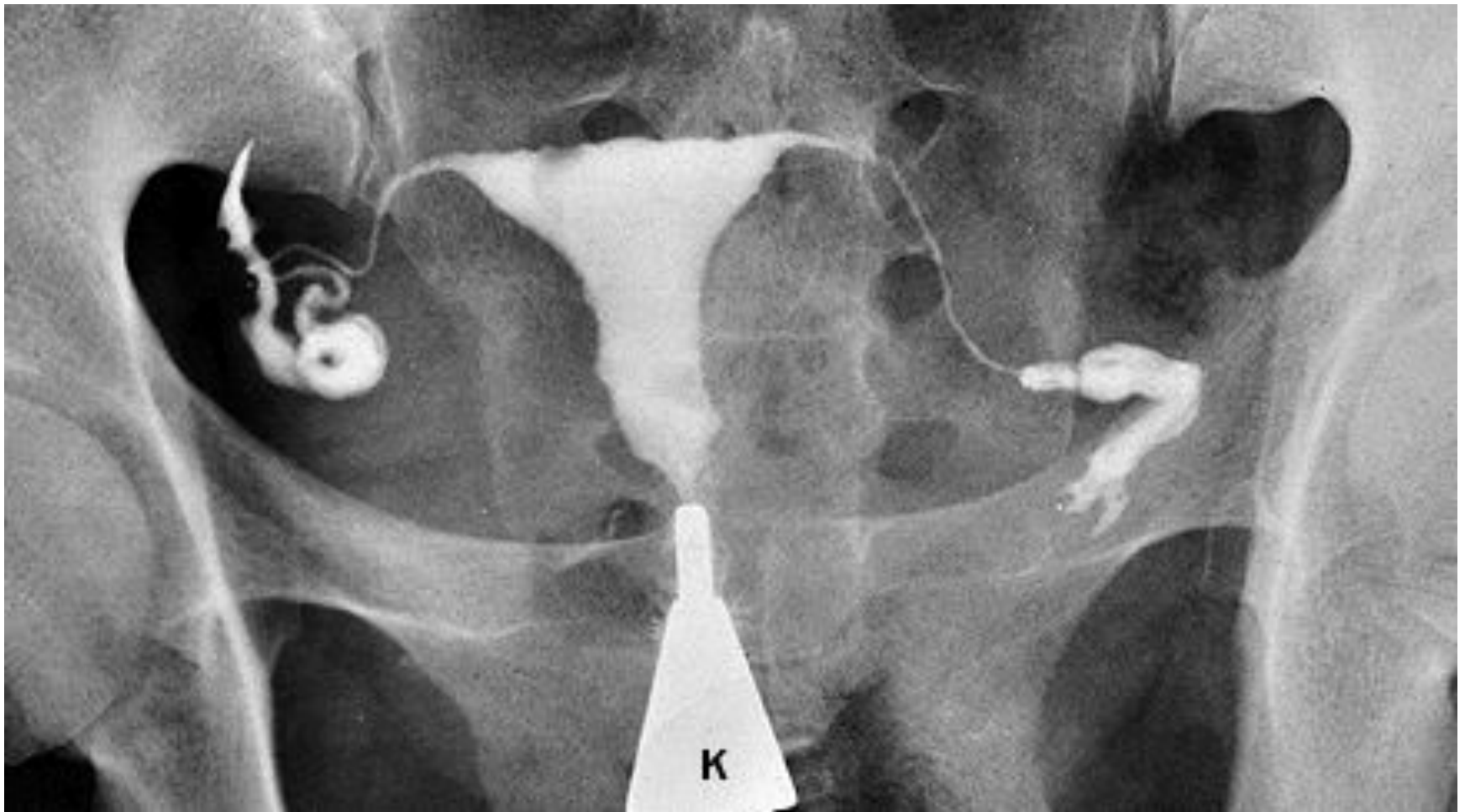
1. Organa genitalia feminina interna:
ovarium, tuba uterine, uterus, vagina,
oporoëphoron, paroëphoron
2. Organo genitalia feminina externa
(Pudendum femininum): Mons pubis,
labium majus pudendi, labium minus
pudendi, Jll.vestibulares minores, jll.
.vestibularis major, clitoris



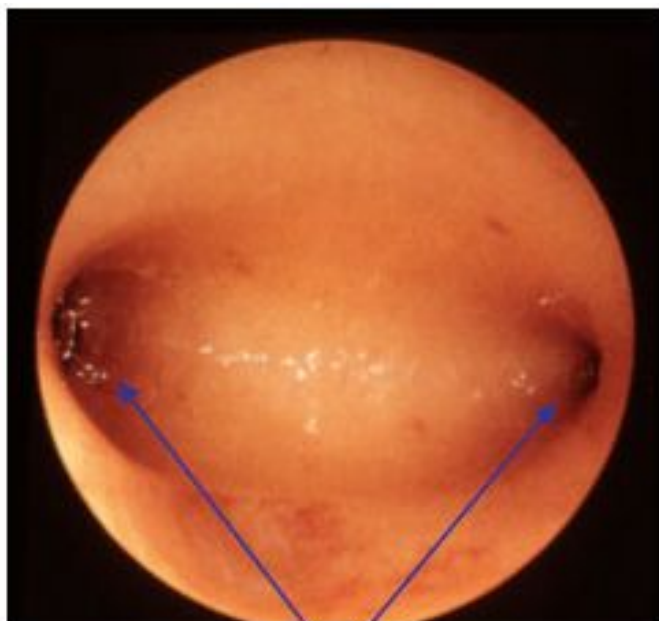




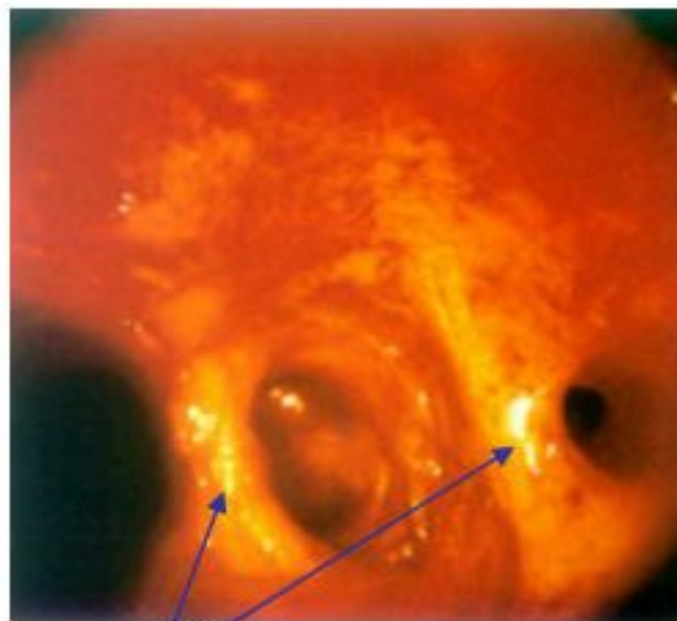




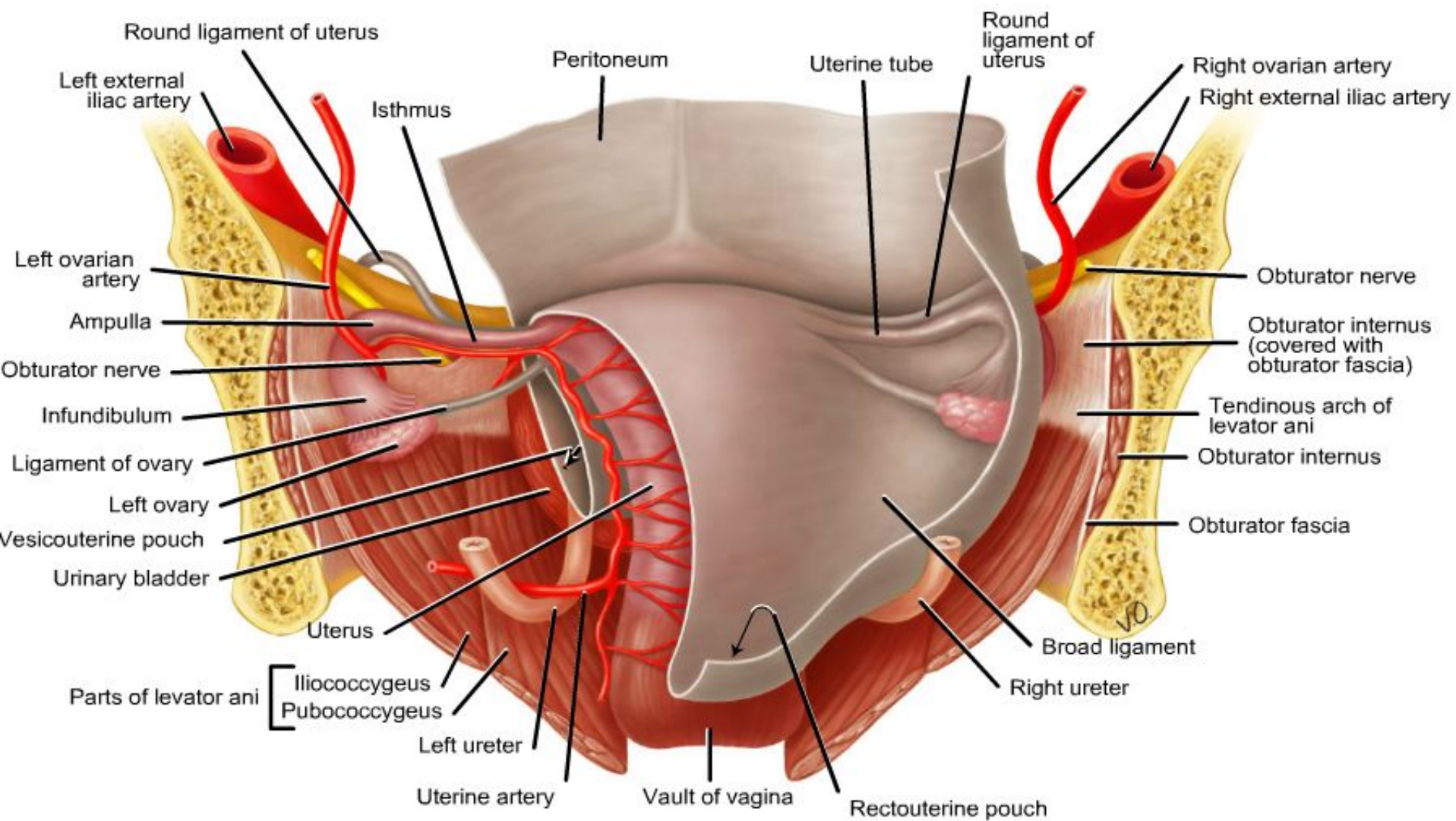
Uterus, Uterus; uterine (fallopian) tube, Tuba uterina; ap-radiograph after injection of a contrast medium through the neck of the uterus (hysterosalpingography); central view. This clinical method can be used to check for luminal obstruction in the uterine tube. K= adapter of the injection tube for the contrast medium

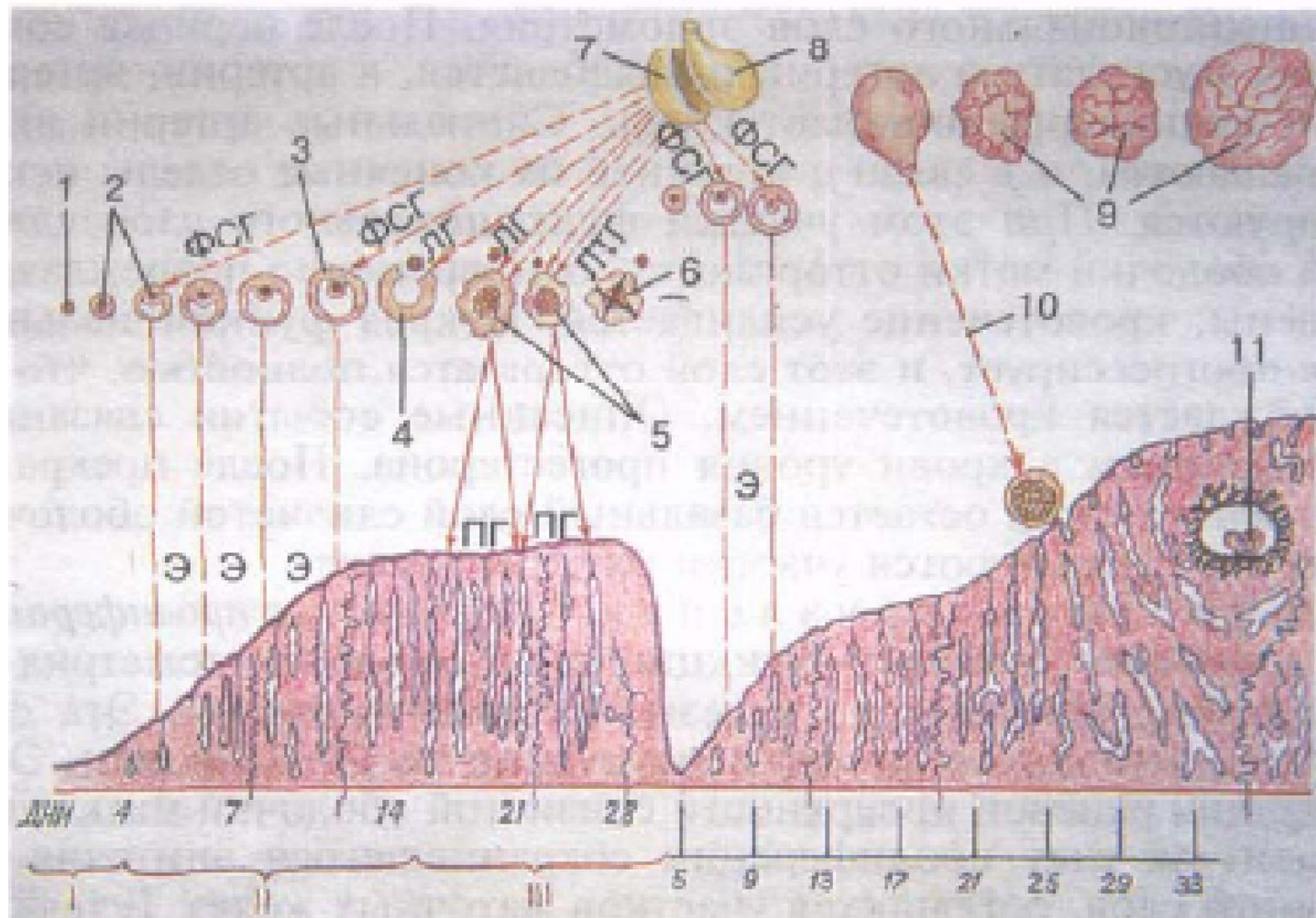


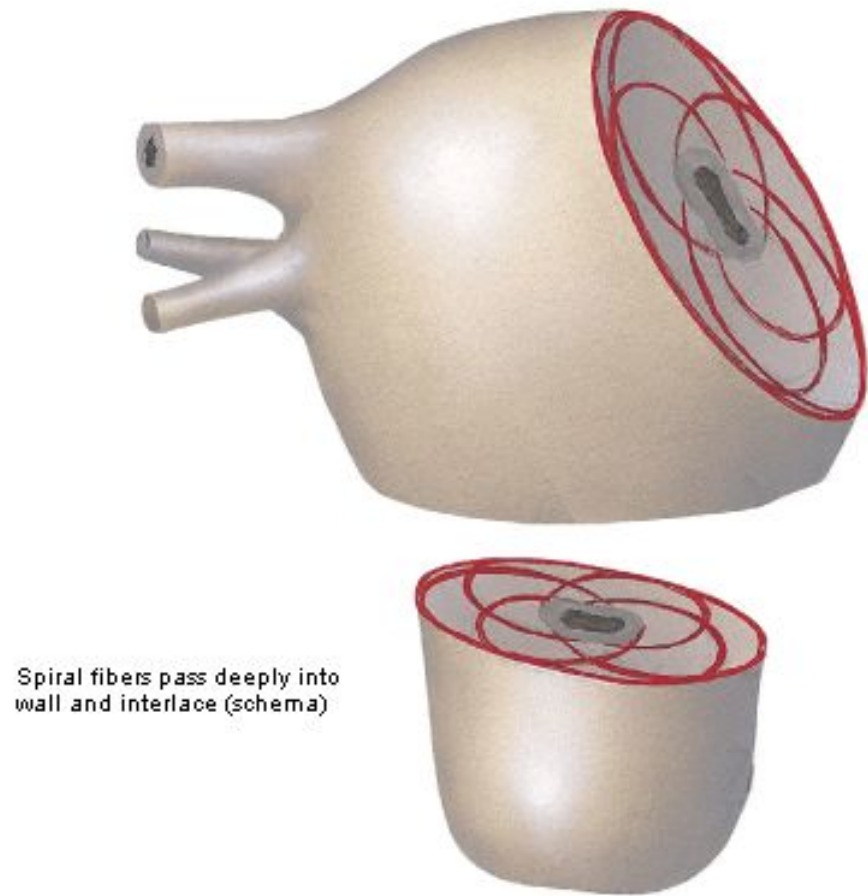
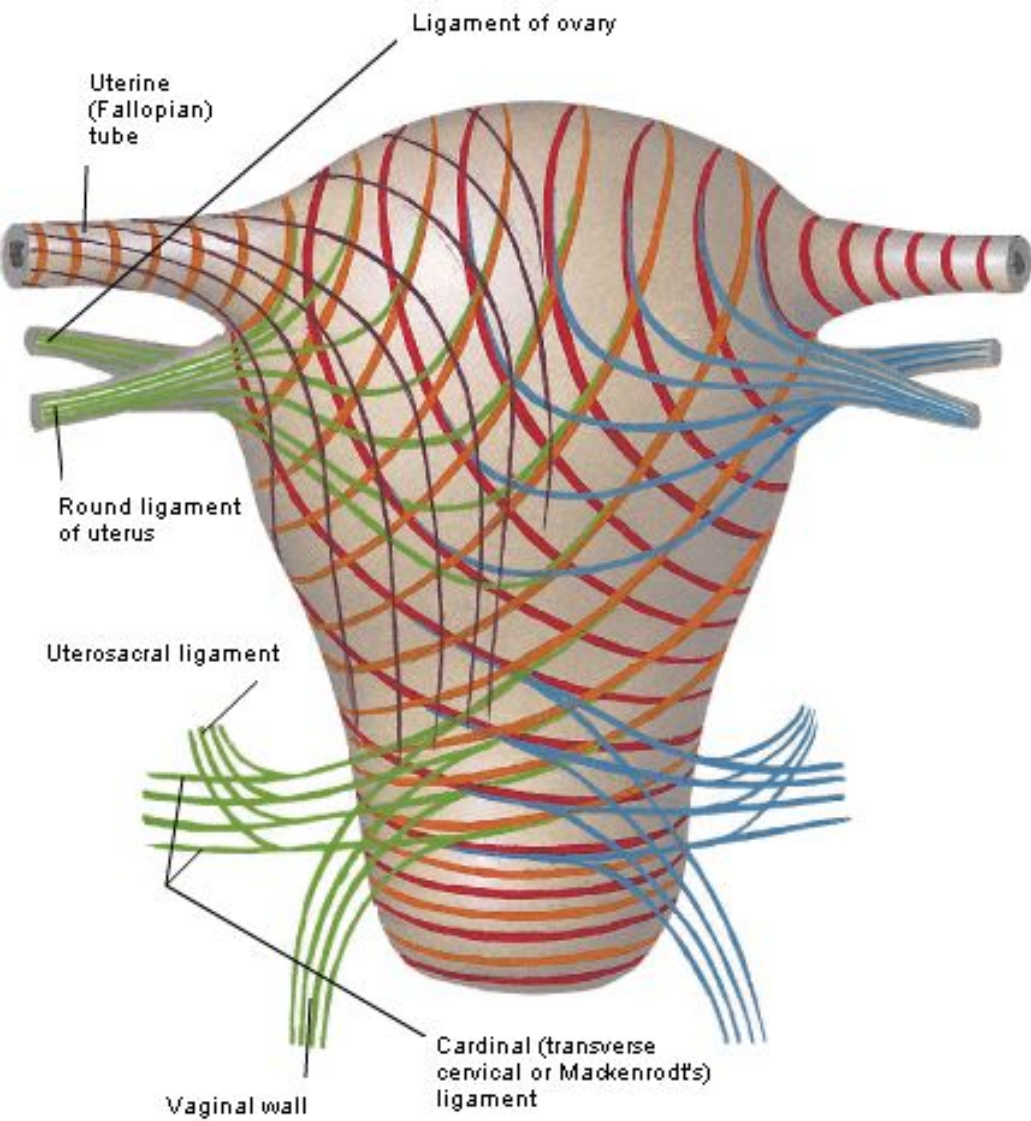
Так выглядит нормальная полость матки. Хорошо видны начальные участки маточных труб - устья (показаны стрелками)

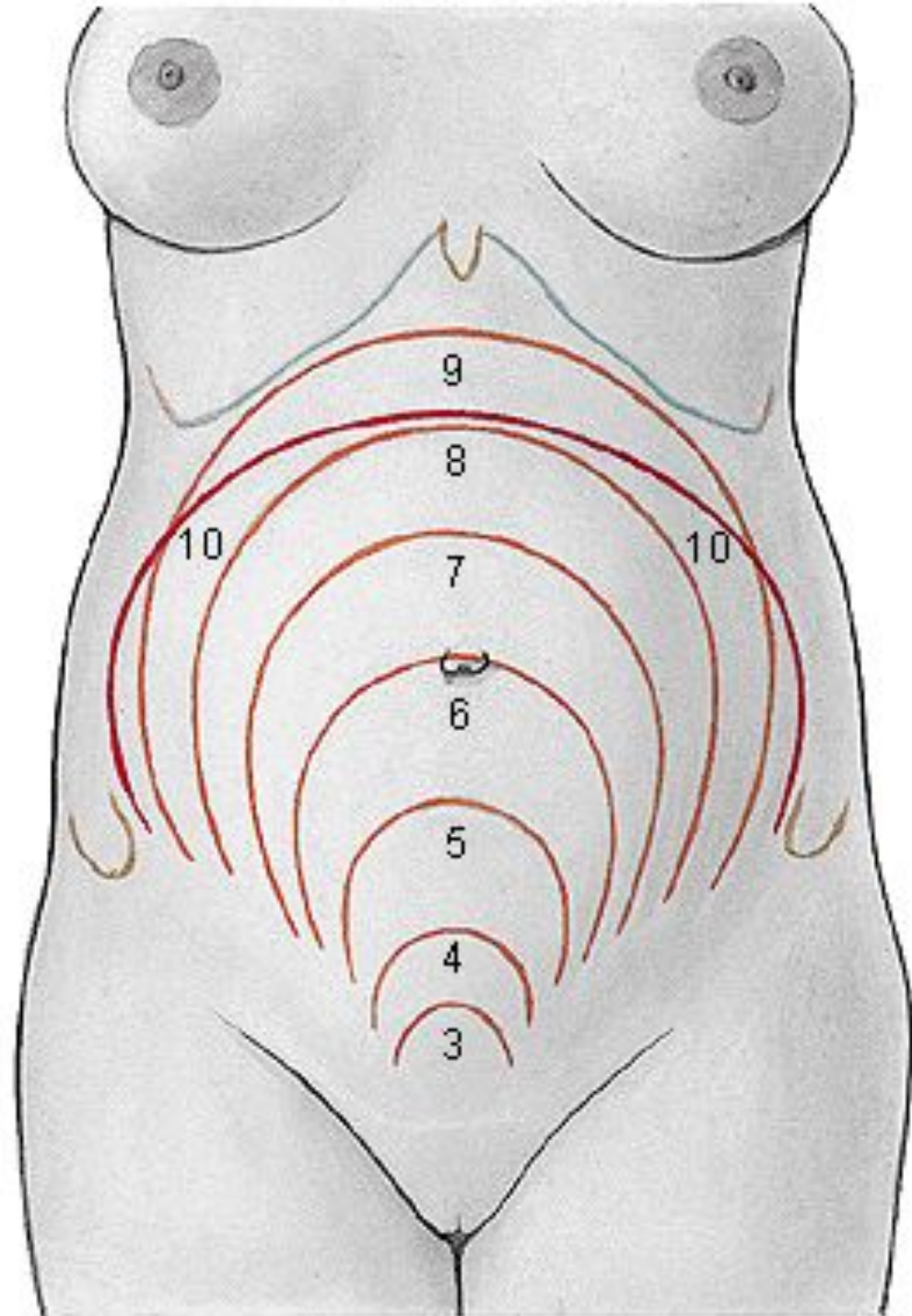


Так выглядит спаечный процесс в полости матки (синехии)











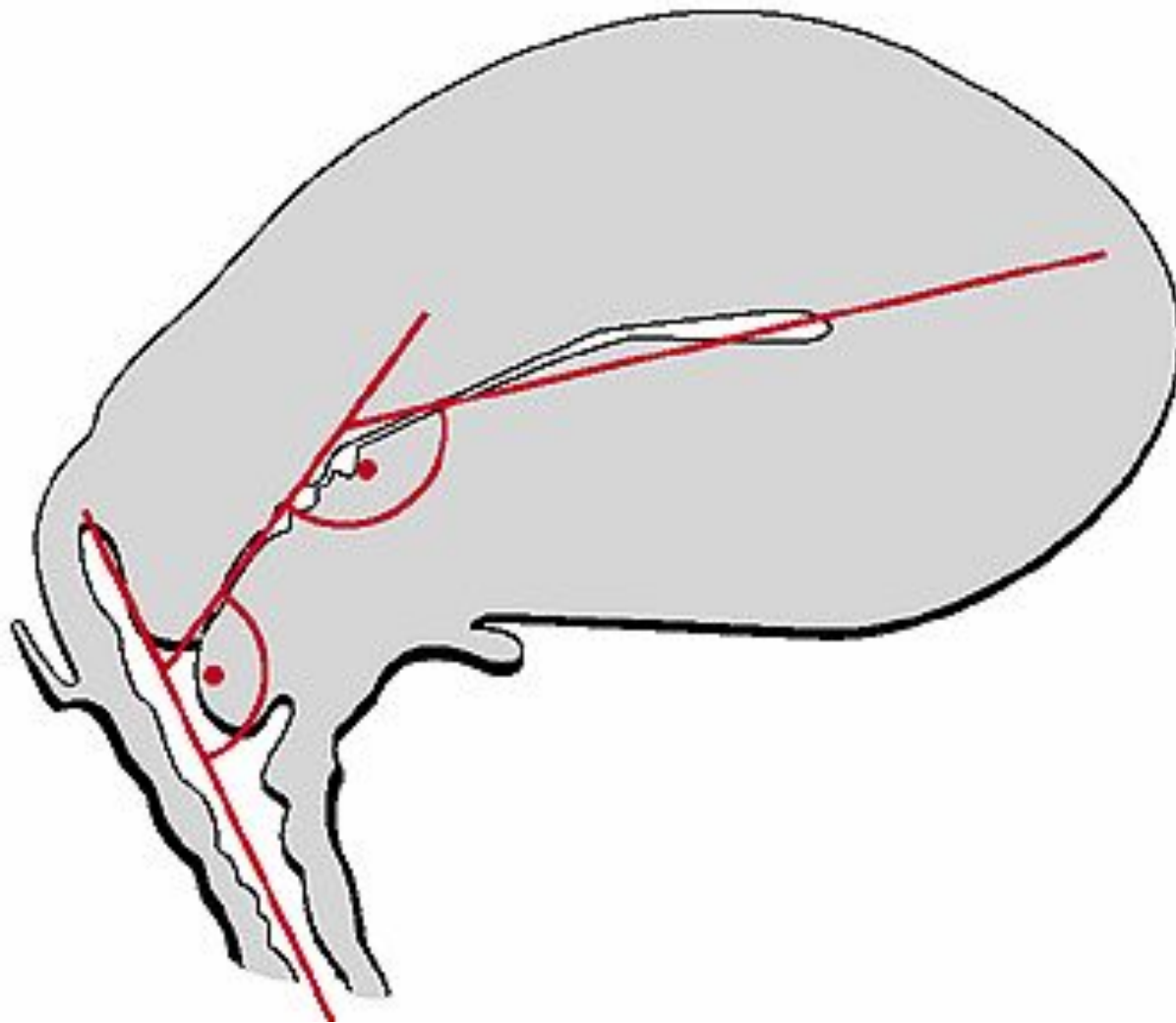
3 month



5 month



7 month



Uterus, Uterus, Vagina, Vagina, normal angles between the vagina, the cervix and the corpus of the uterus, schematic median section, lateral view.

* **longitudinal axis of the vagina**

** **longitudinal axis of the cervix of the uterus**

Altered rectal contour
in 3rd degree

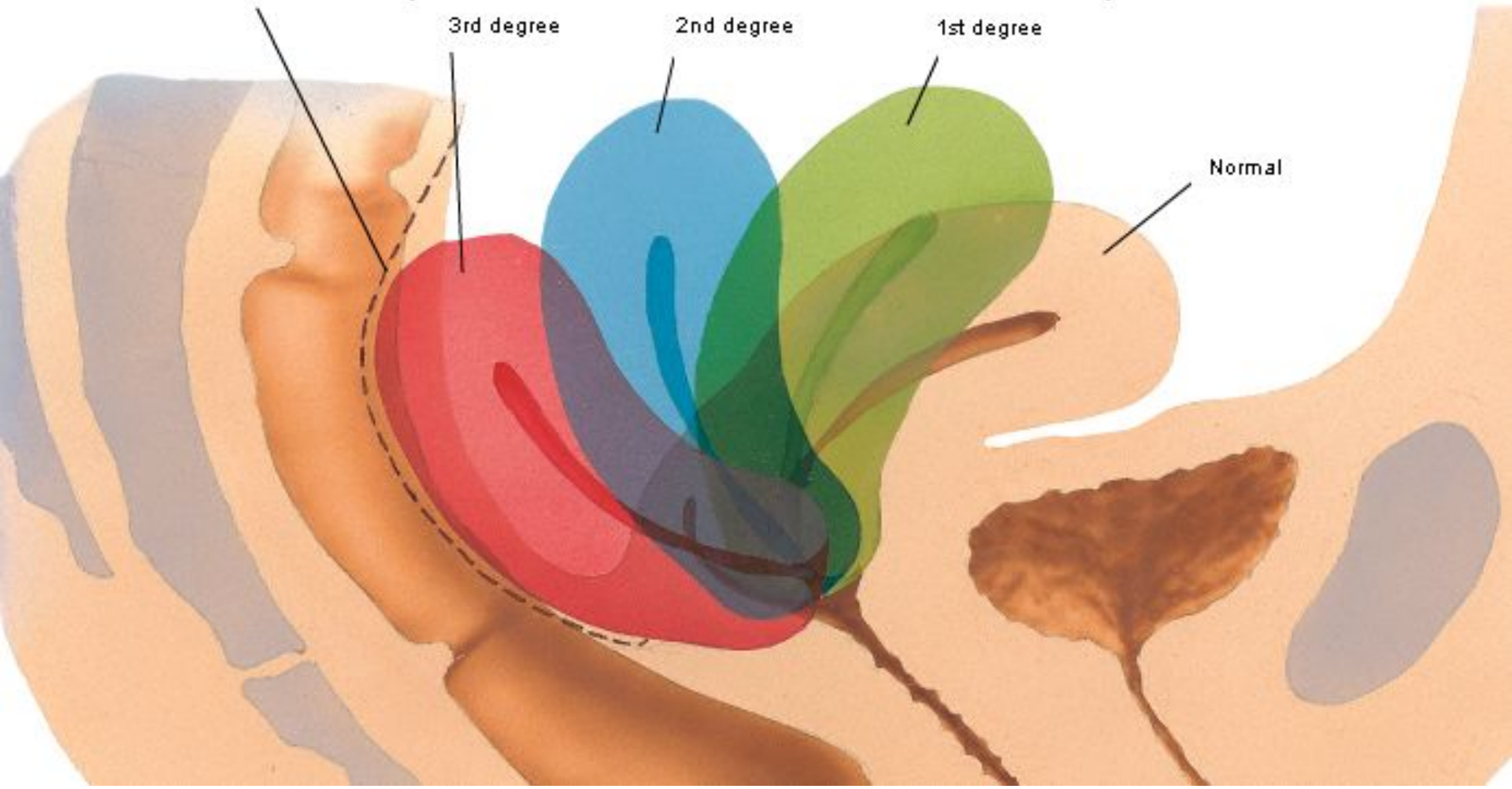
Degrees of retroversion

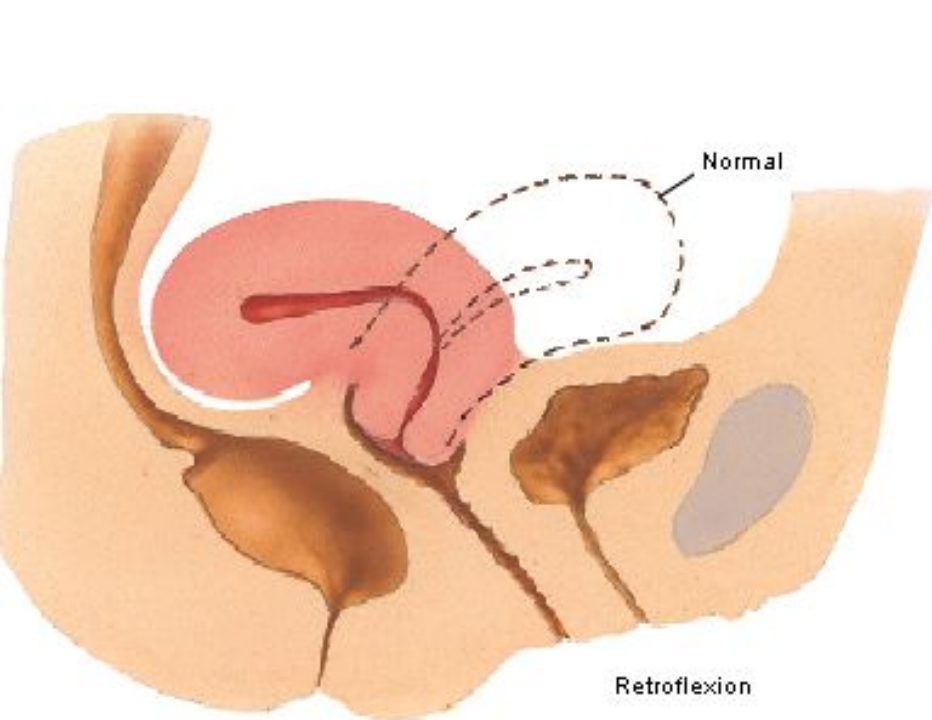
3rd degree

2nd degree

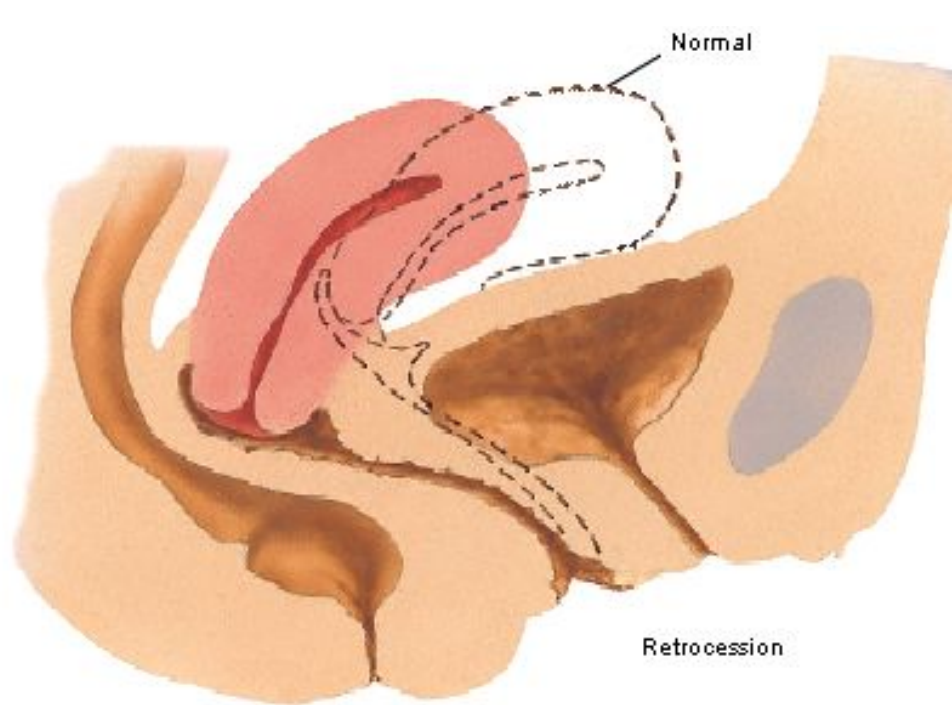
1st degree

Normal

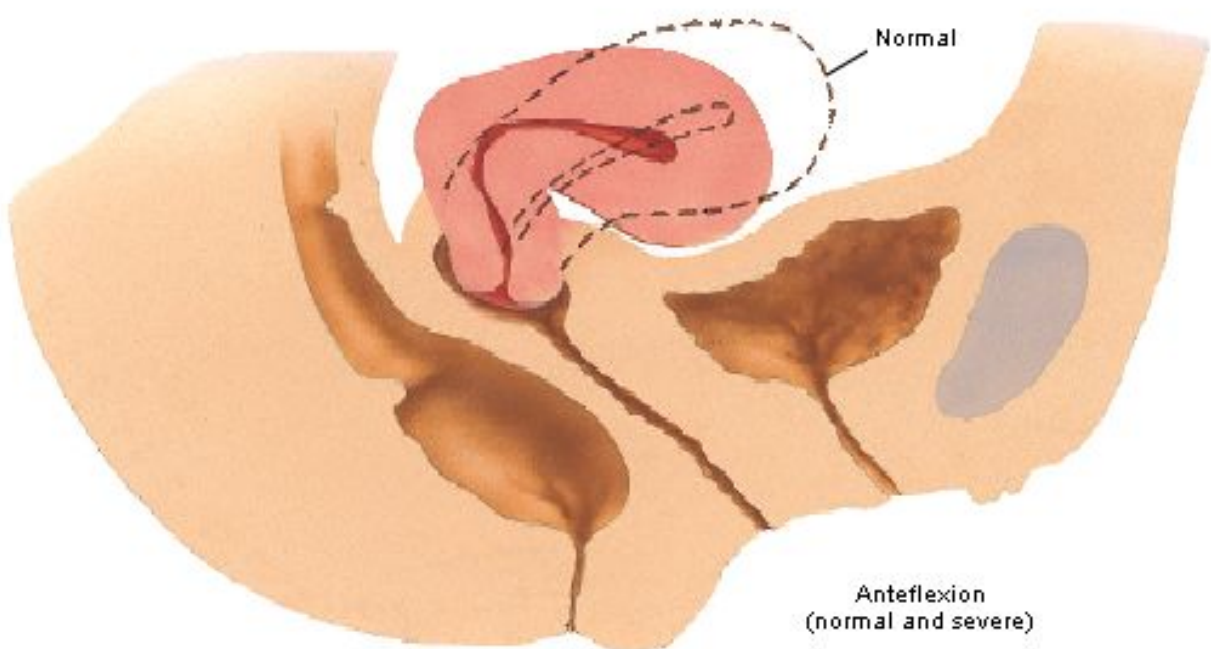




Retroflexion

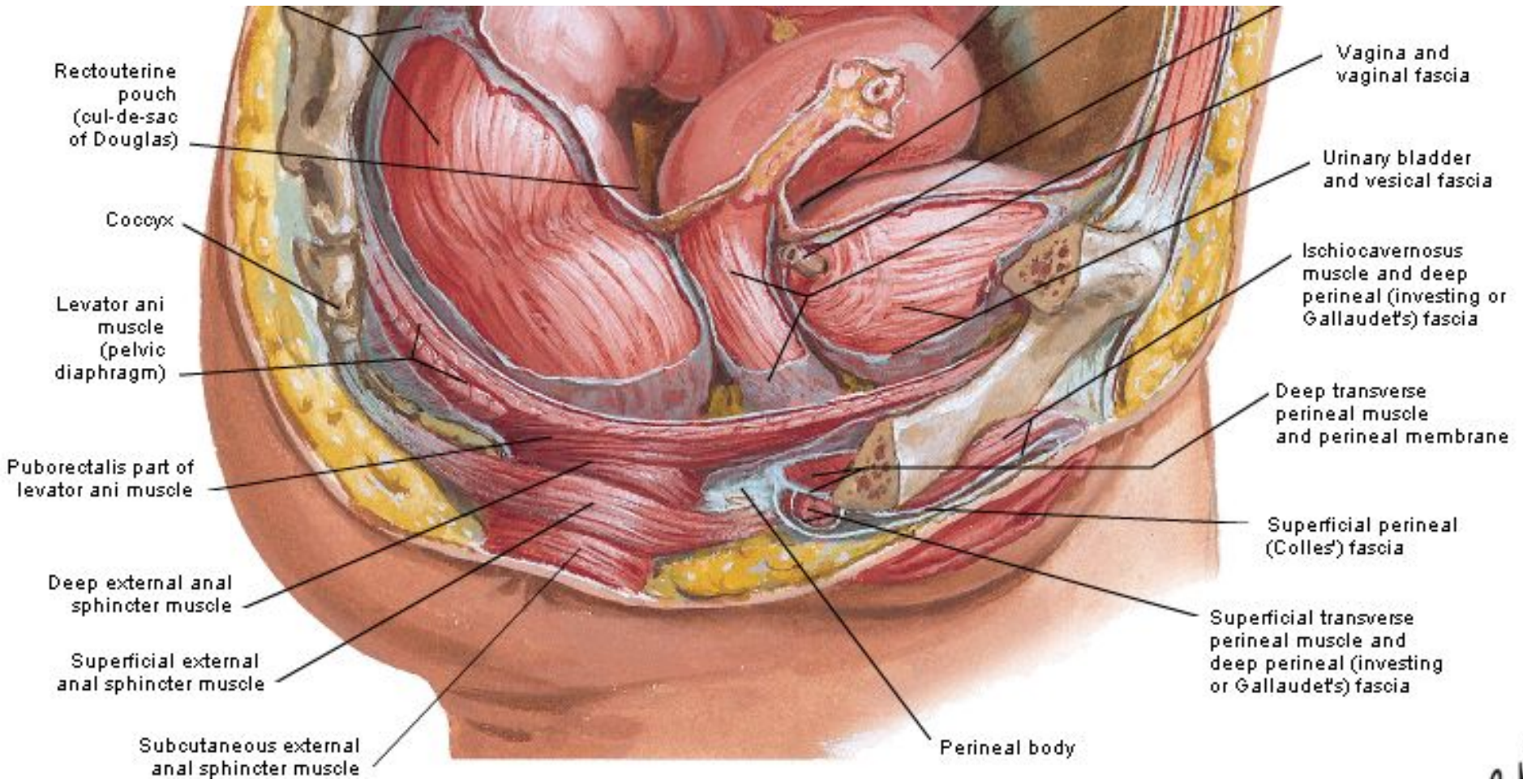


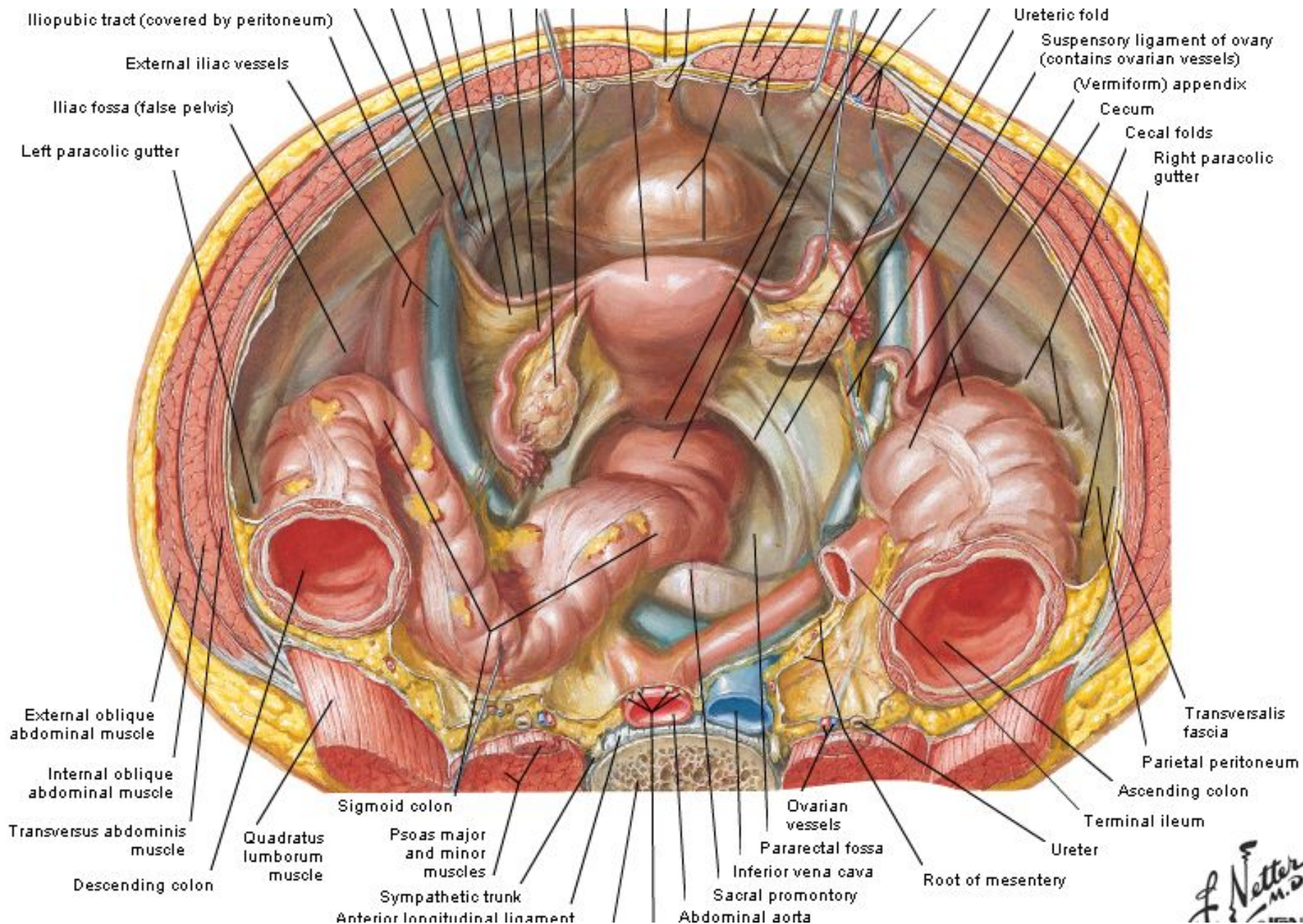
Retrocession

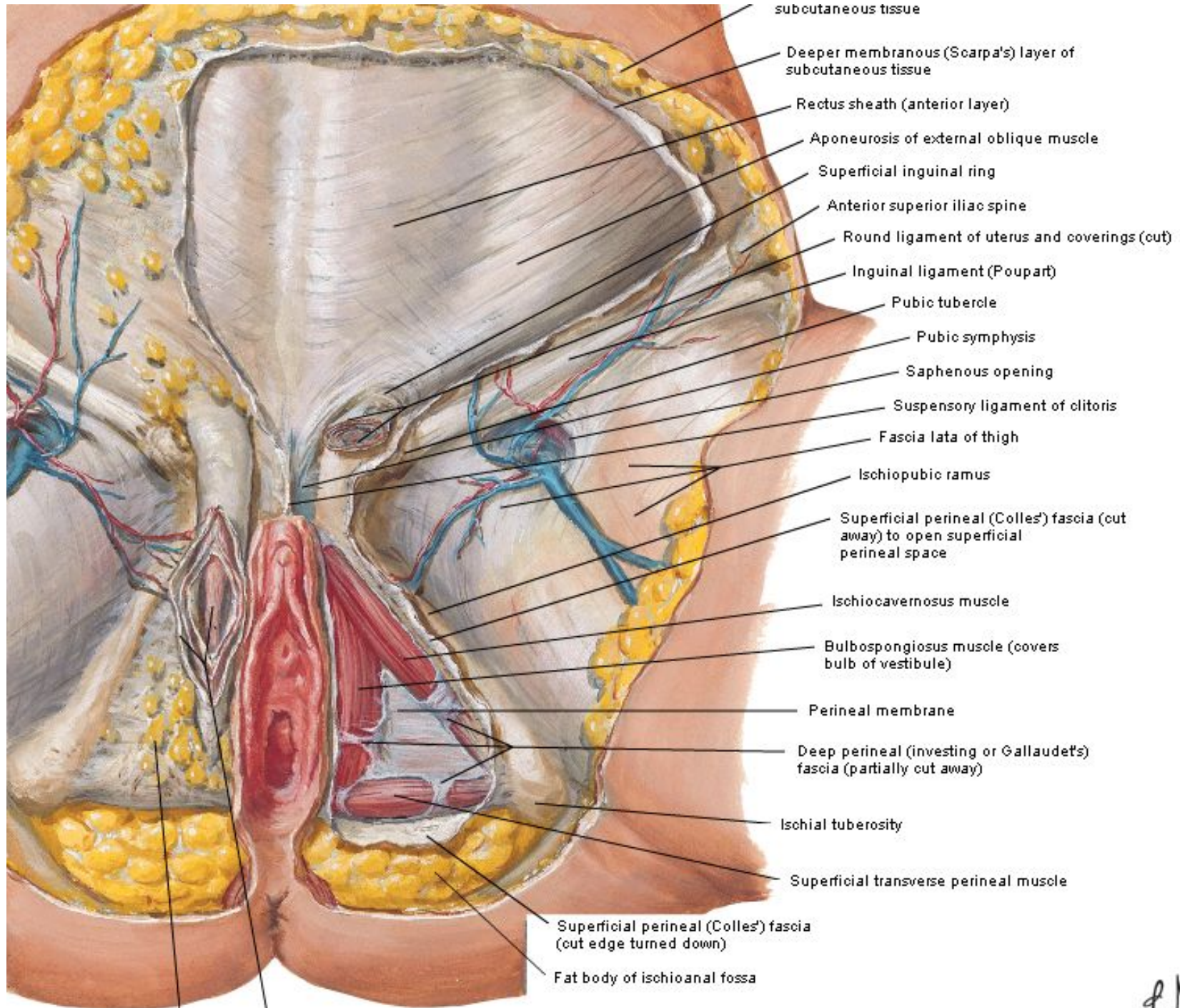


Antelexion
(normal and severe)





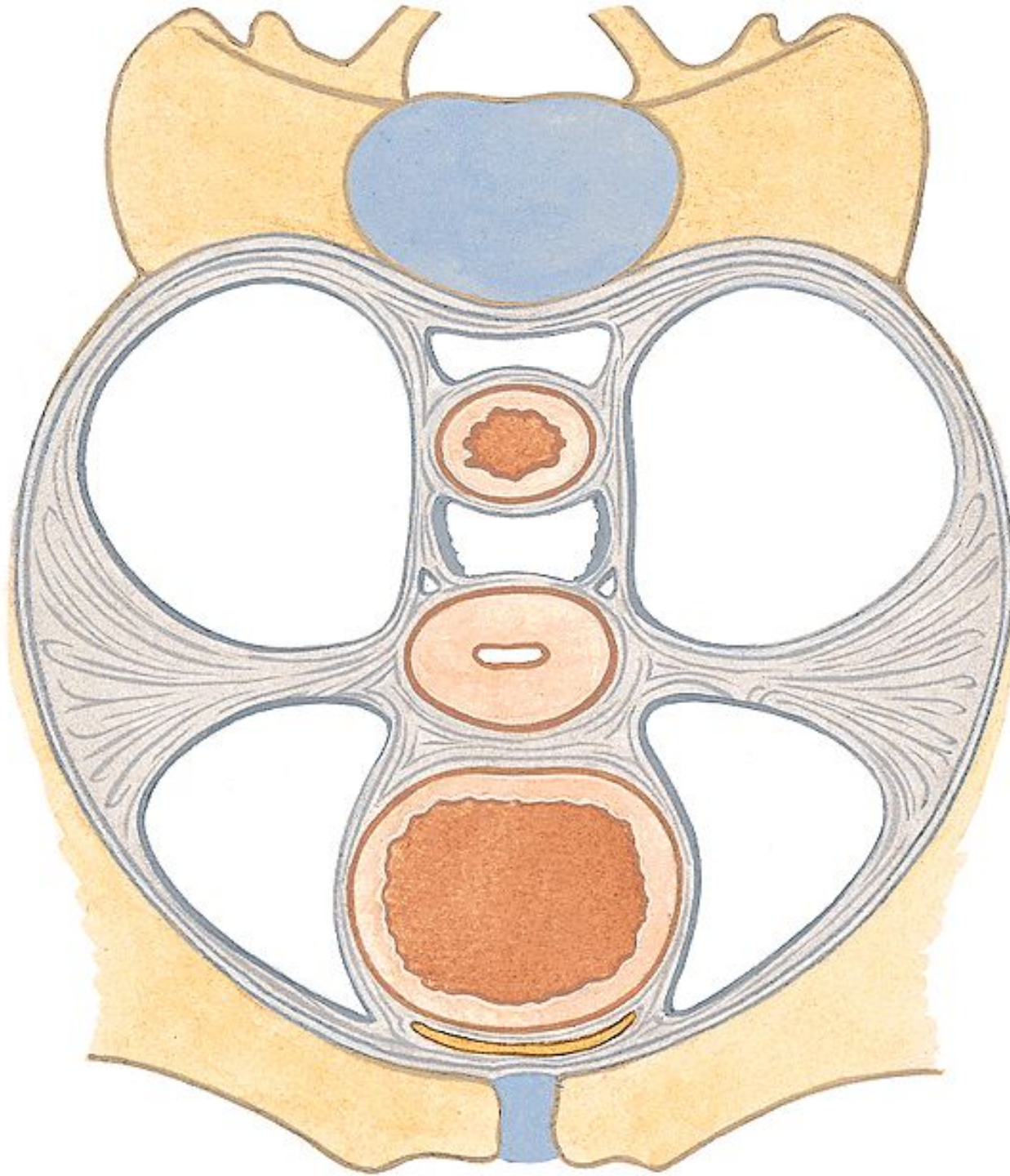




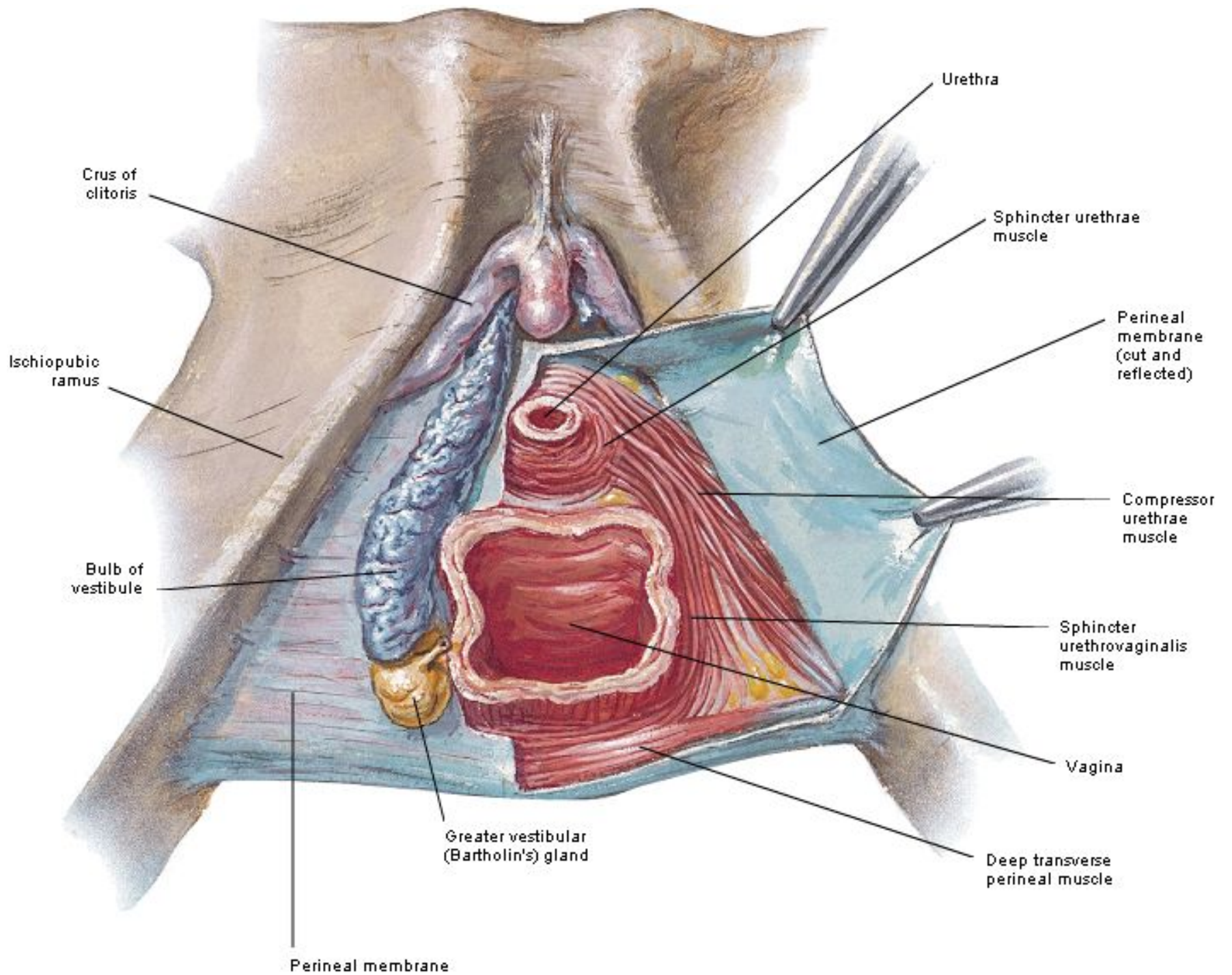
Superficial perineal

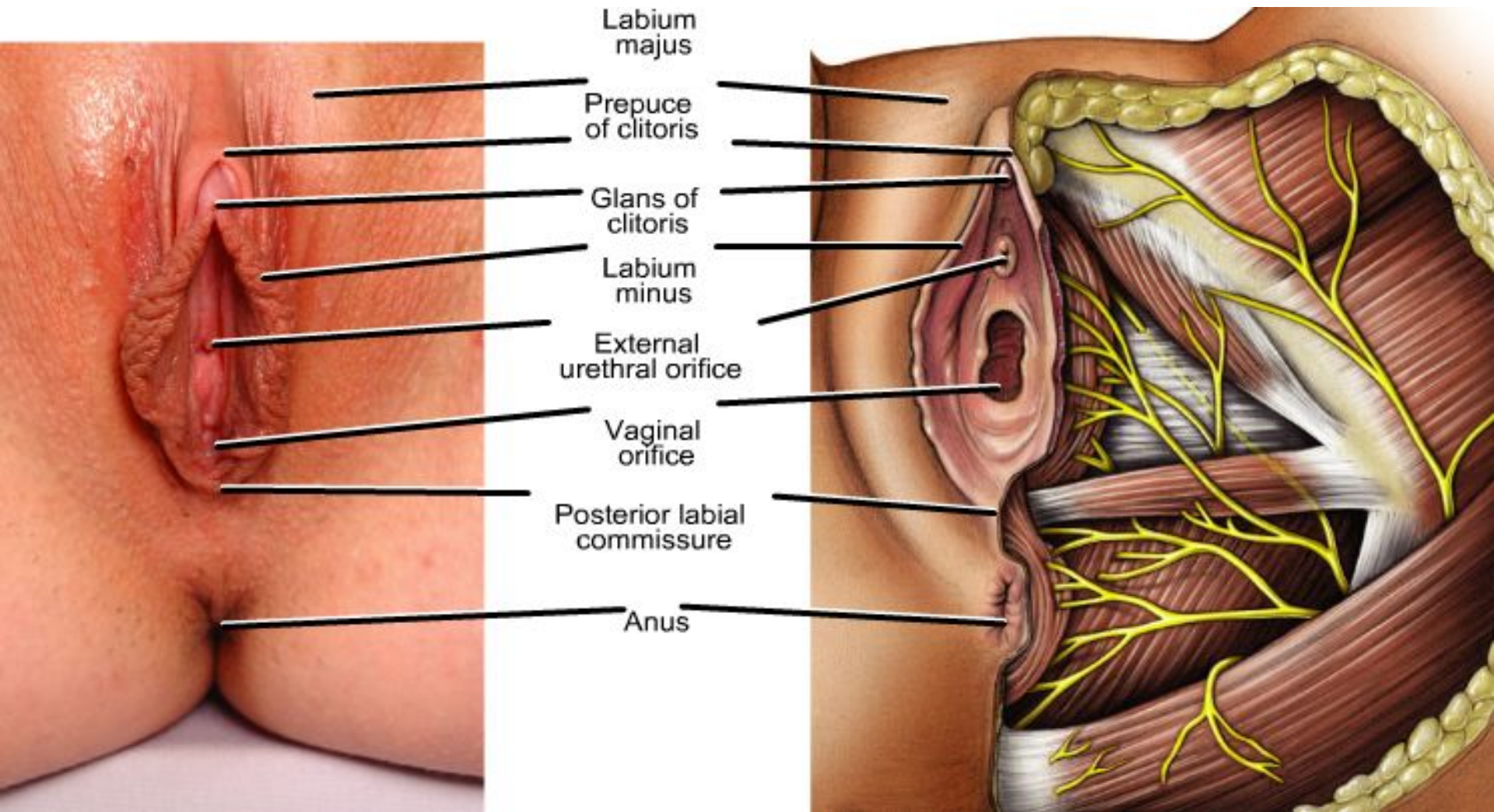
Round ligament of uterus and coverings

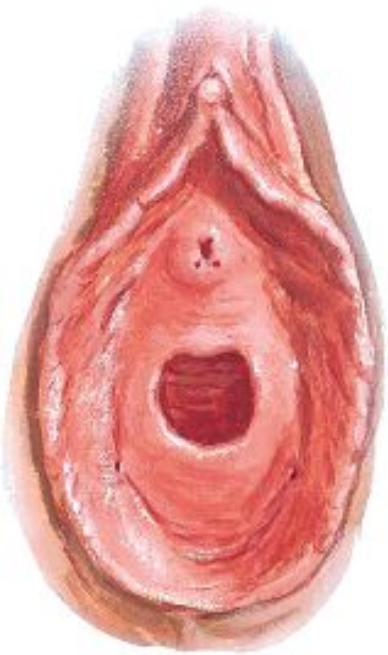
[Handwritten signature]



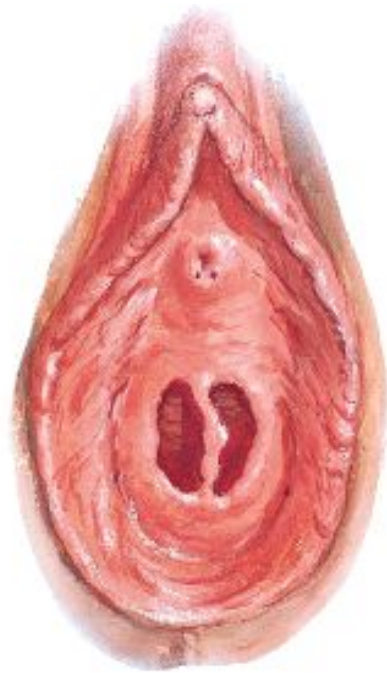
Cardinal ligament,
 Parametrium*
 Cervix uteri
 Lig. pubovesicale
 Pararectal space,
 Paraproctium*
 Paravesical space,
 Paracystium*
 Petropubical space (= spatium prevesical = RETZIUS's space)*
 Plica recto-uterina (Plica sacrorectalis)
 Rectal fascia*
 Recto-uterine pouch (= DOUGLAS'S space)*
 Rectum
 Retrorectal space*
 Sacro-uterine ligament*
 Vesical fascia*
 Vesica urinaria



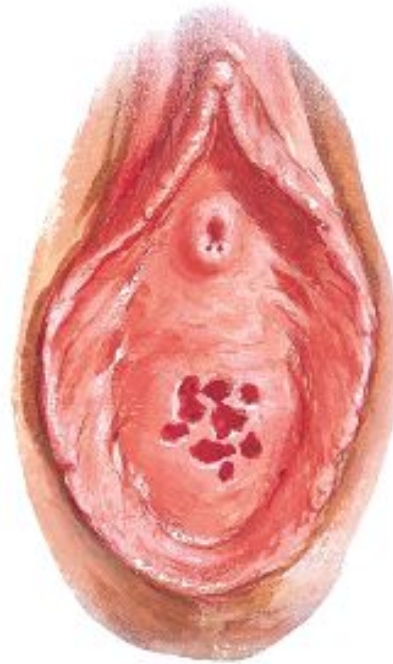




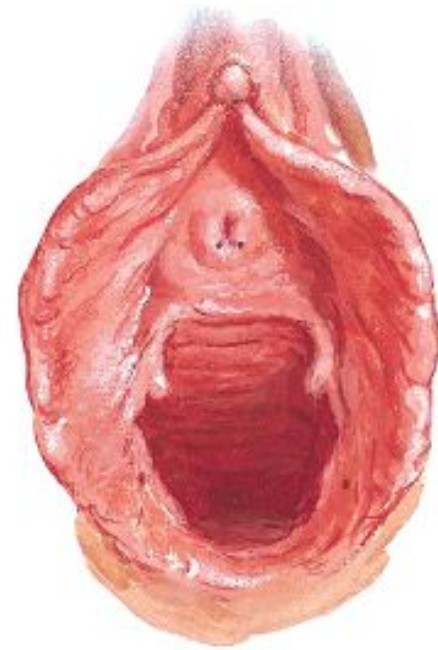
Anular hymen



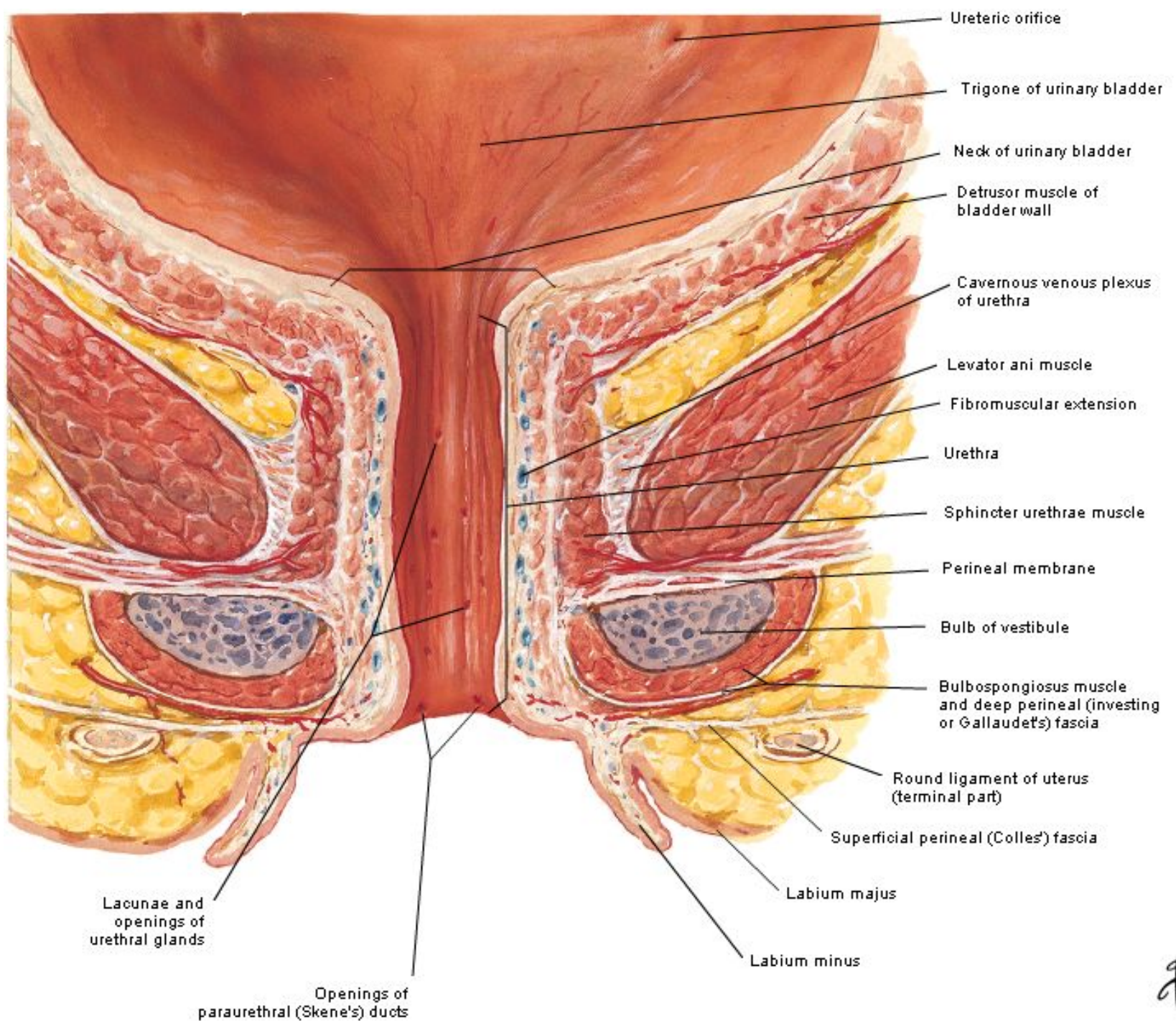
Septate hymen

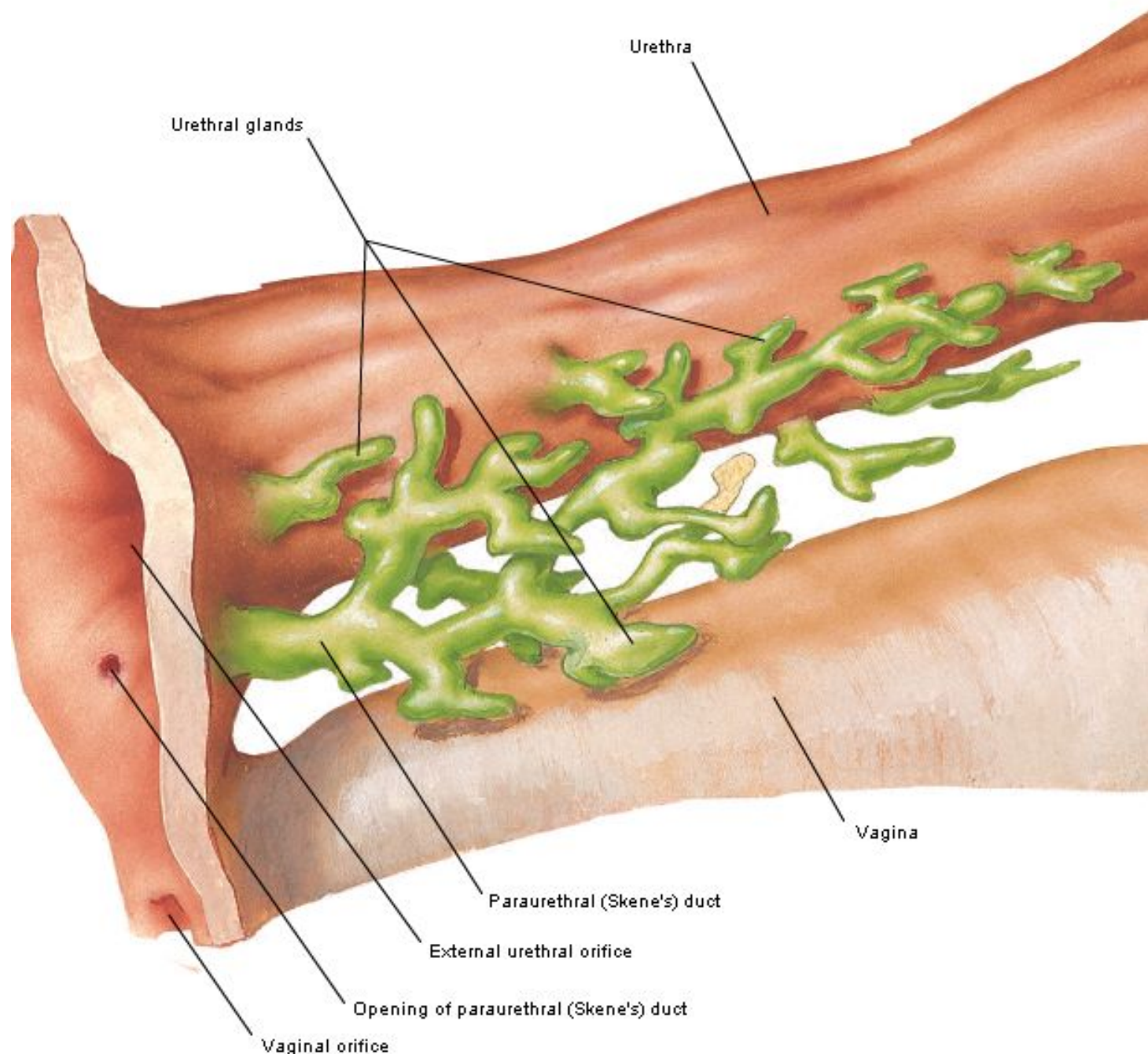


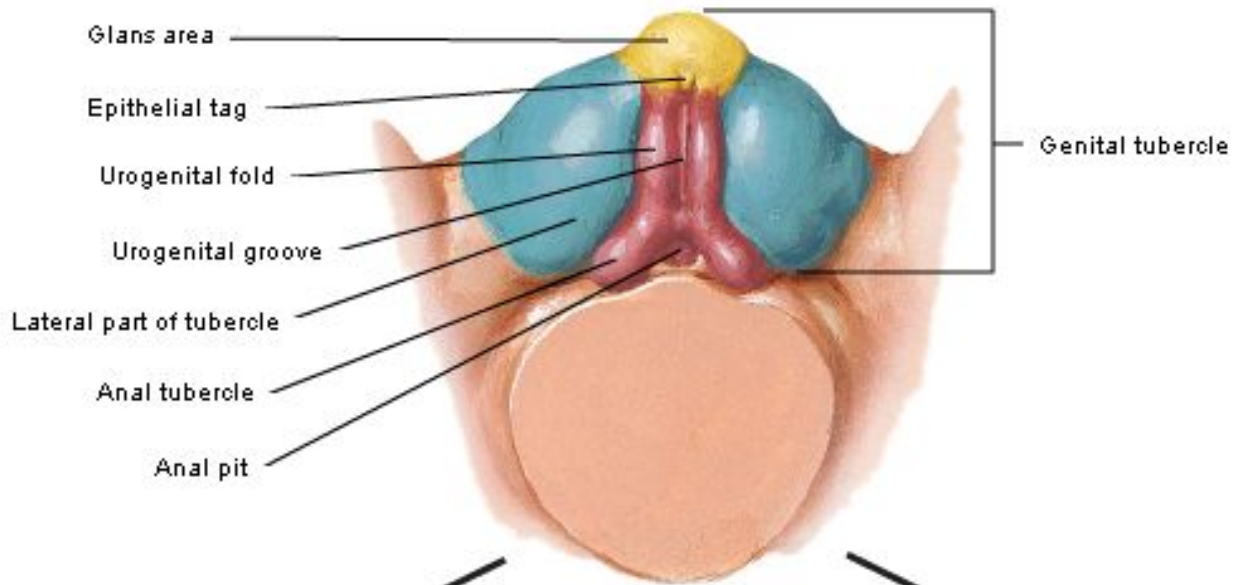
Cribriform hymen



Parous introitus





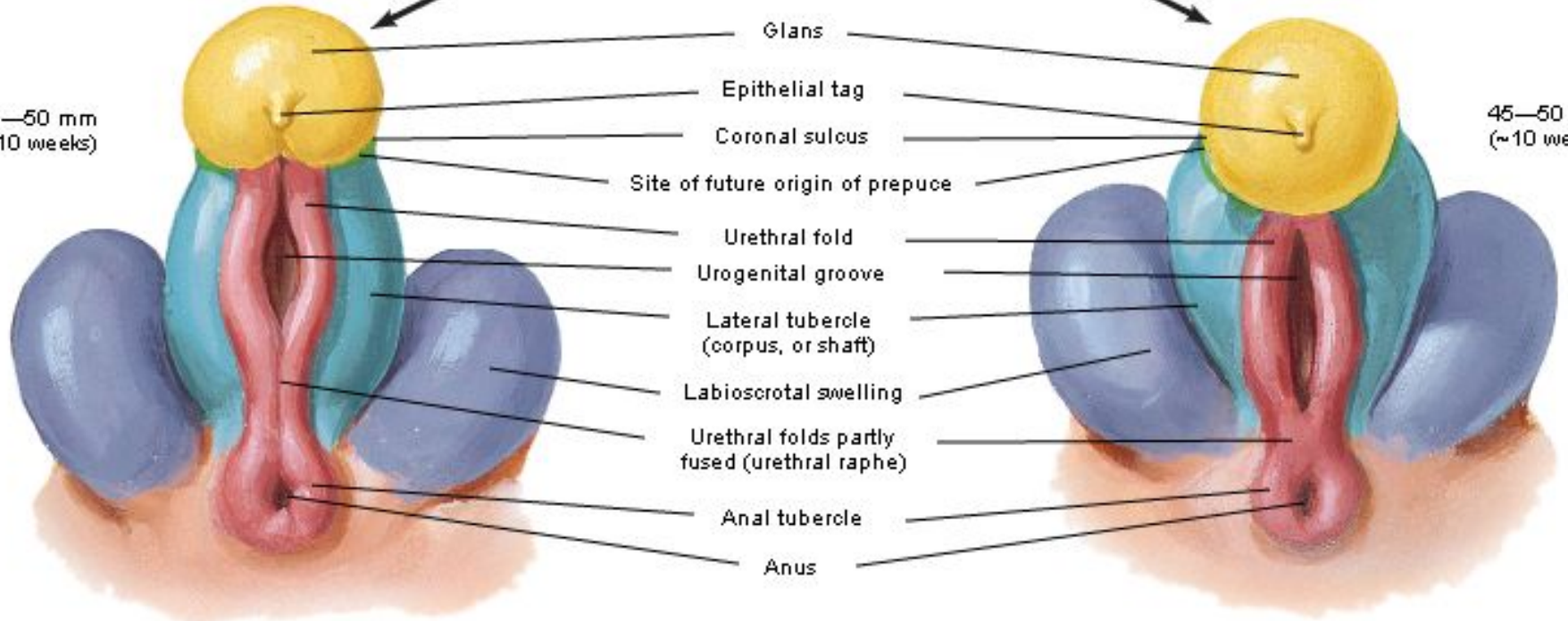


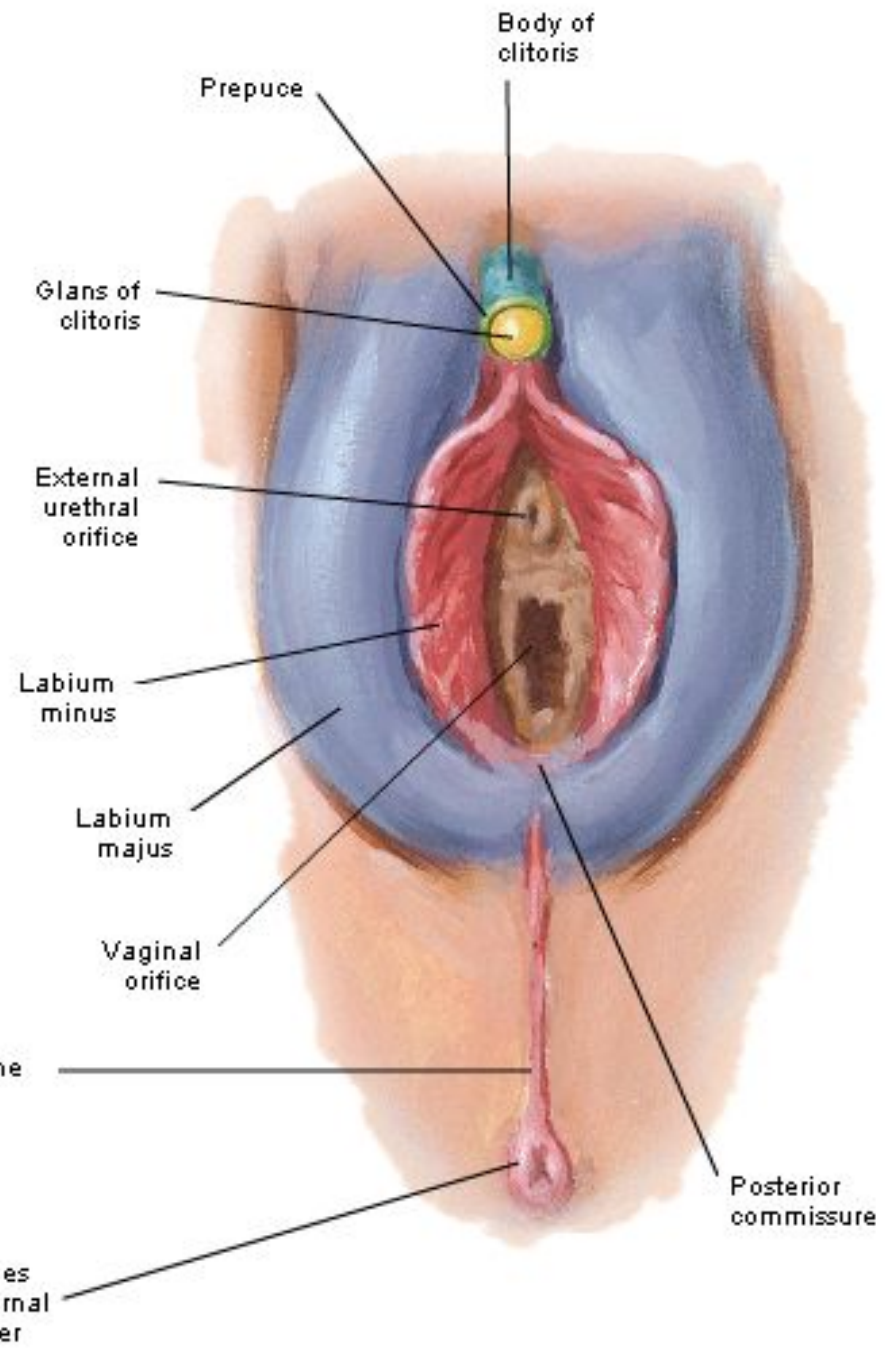
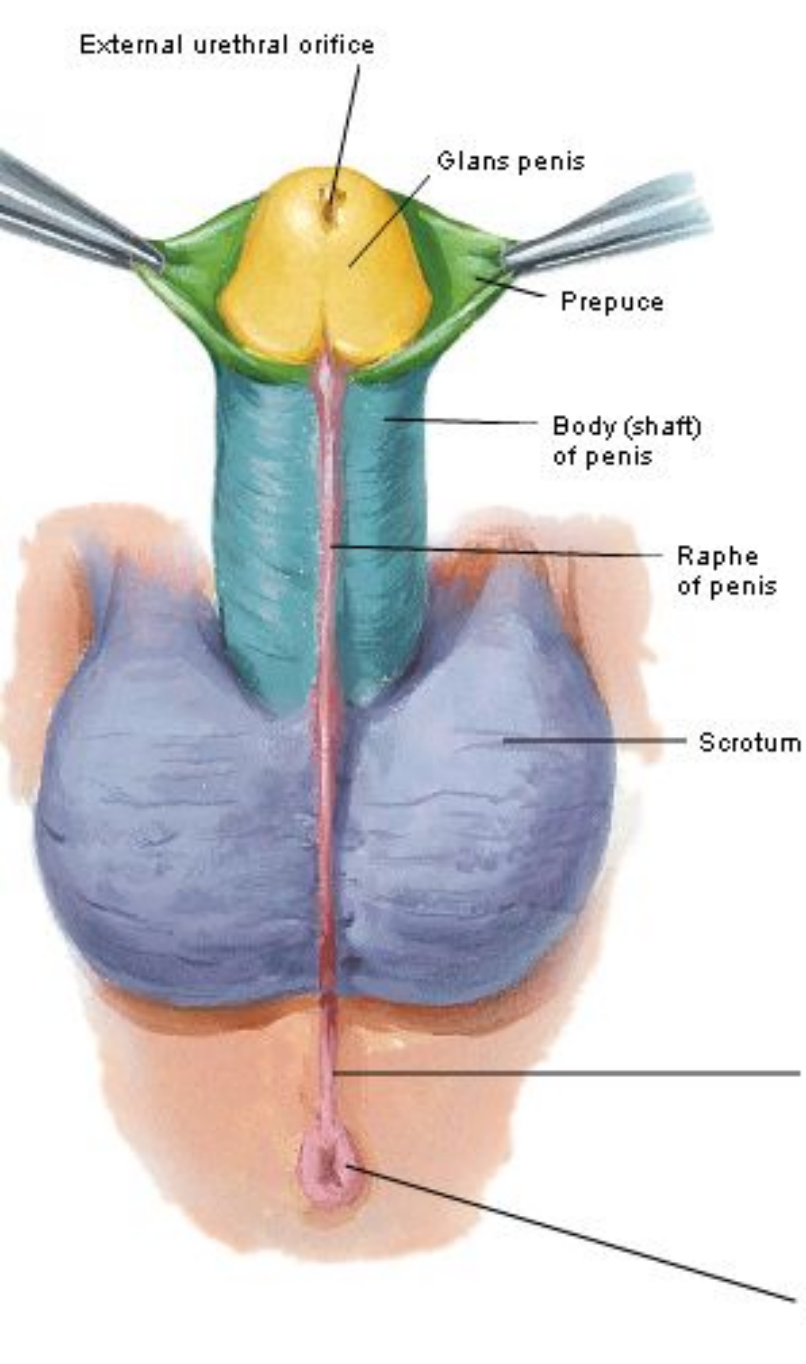
Male

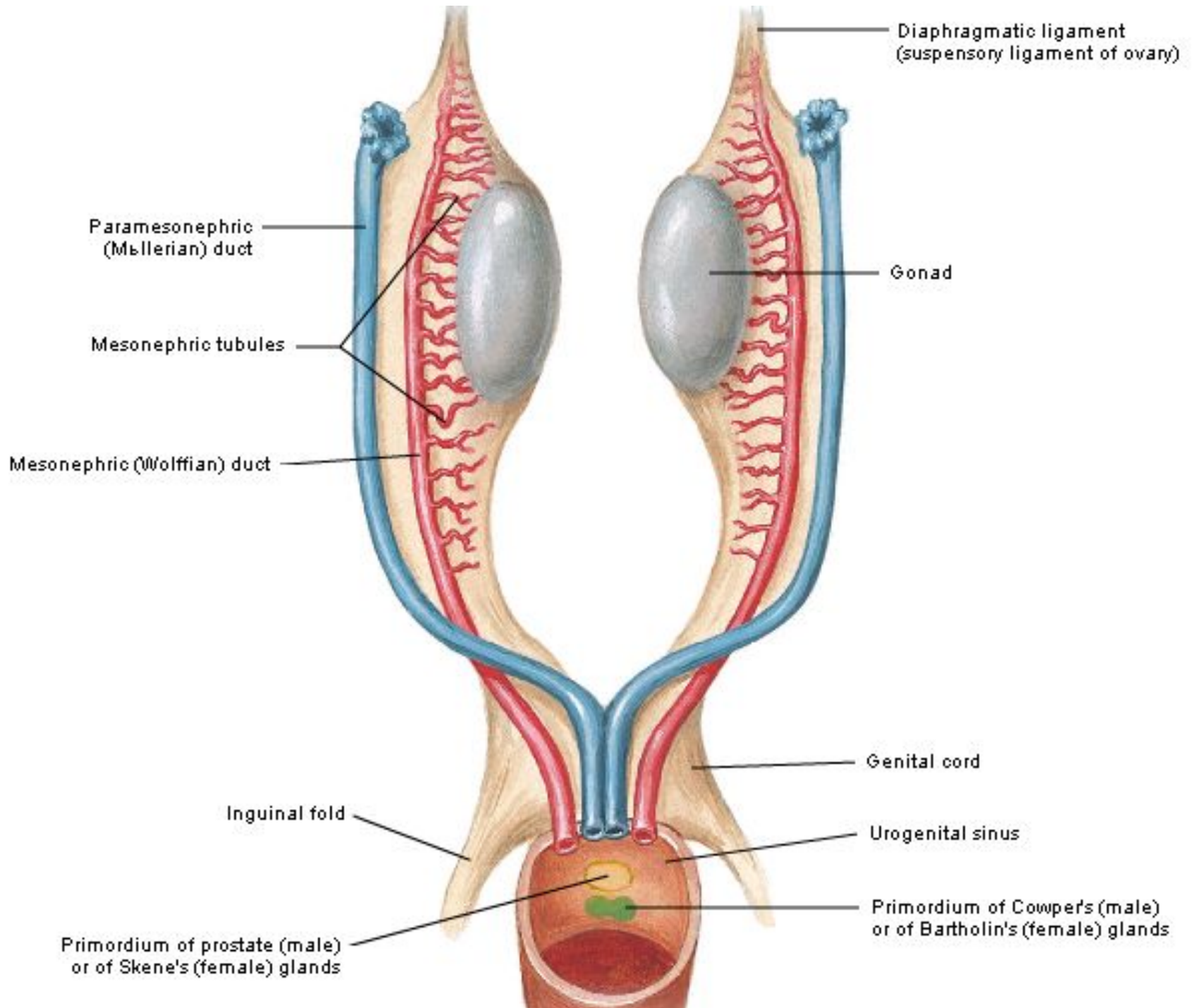
Female

45—50 mm
(~10 weeks)

45—50 mm
(~10 weeks)

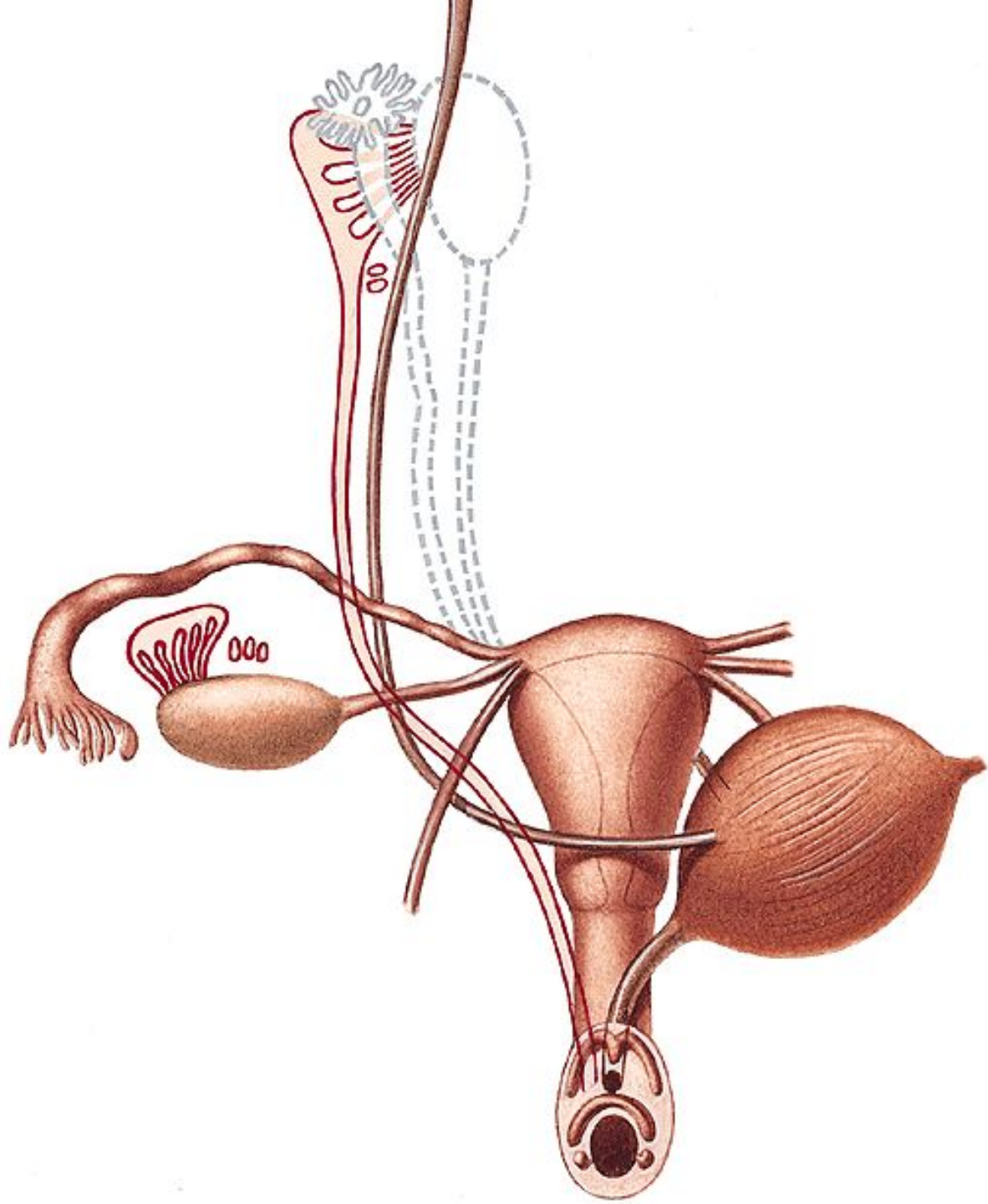


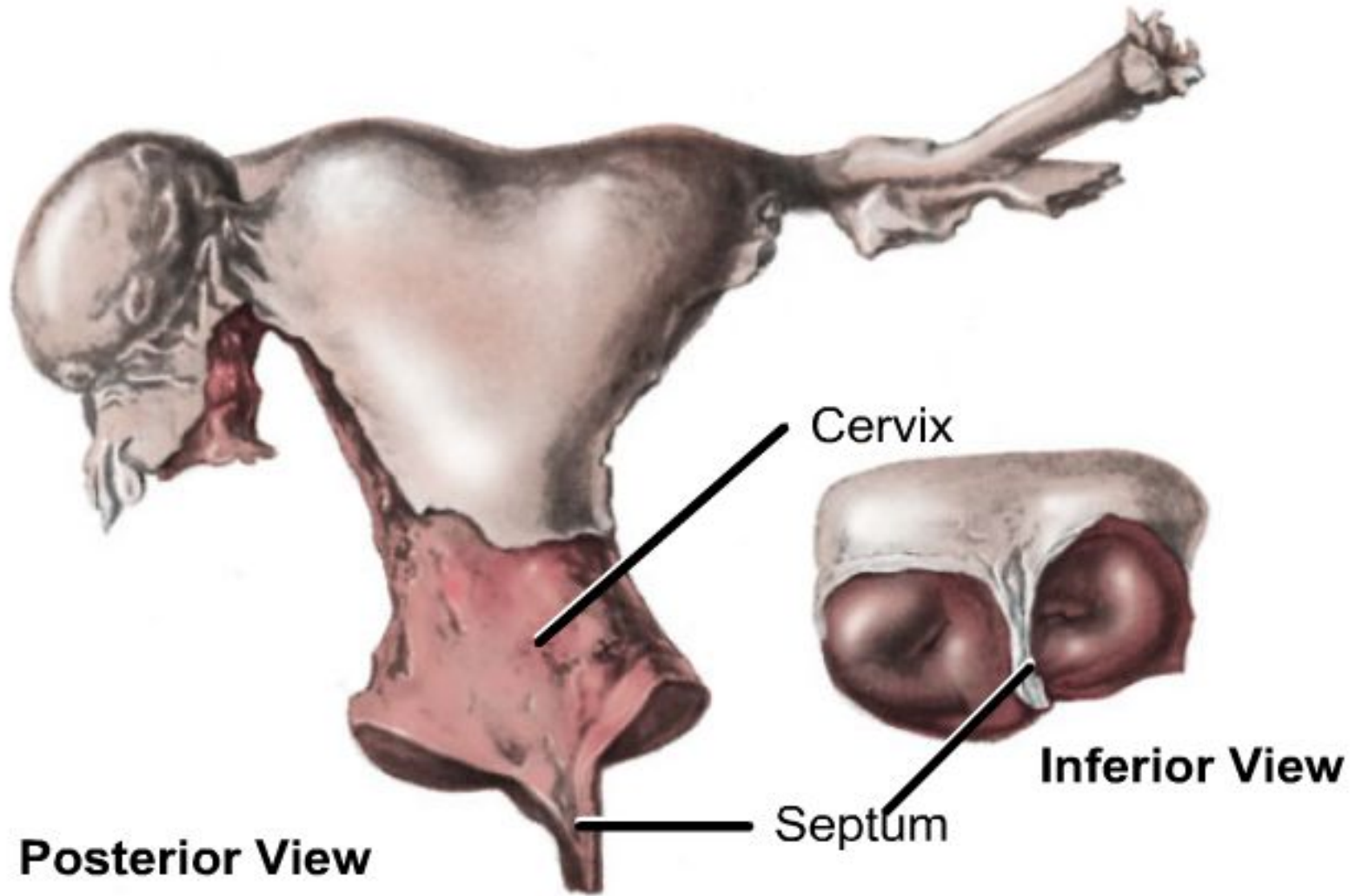




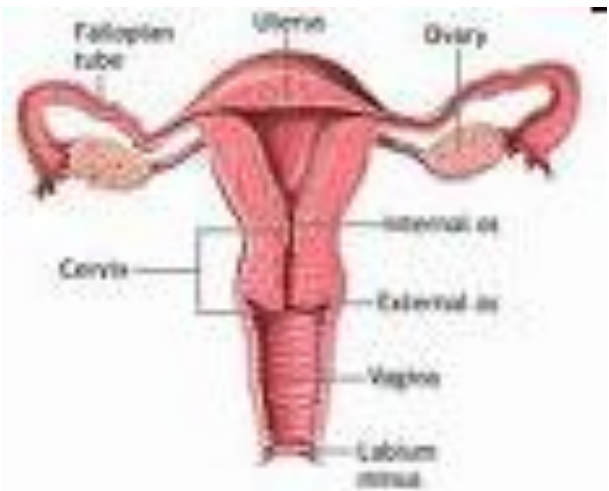
-
- Seminal vesicle
 Ductus deferens
 Prostatic utricle
 Prostate
 Opening of ejaculatory duct
 Bulbourethral gland (Cowper)
 Appendix of epididymis
 Epididymis
 Efferent ductules
 Appendix of testis
 Testis
 Paradidymis
 Gubernaculum

-
- Uterine (Fallopian) tube
 Broad ligament
 Gartner's duct (cranial mesonephric duct)
 Epouphoron (cranial mesonephric tubules)
 Parouphoron (caudal mesonephric tubules)
 Vesicular appendix
 Suspensory ligament of ovary
 Ligament of ovary
 Ovary
 Uterus
 Round ligament of uterus
 Vagina (upper 4/5)
 Residua of caudal mesonephric duct
 Vagina (lower 1/5)
 Urethra
 Paraurethral (Skene's) gland
 Greater vestibular (Bartholin's) gland
 Vestibule





Bipartite uterus. Note the absence of the fundus of the uterus and in its place a median depression, the remains of a median vaginal septum, and a cervix with two openings.



Внутренние половые органы женщины в норме и при некоторых пороках развития матки и влагалища

а - норма (1 - влагалище, 2 - яичник, 3 - маточная труба, 4 - матка);

б - аплазия матки и влагалища (отсутствие матки и влагалища);

в — удвоение матки и влагалища;

г — двурогая матка с одной шейкой;

д - двурогая матка с двумя шейками;

е - двурогая матка с неодинаково развитыми рогами;

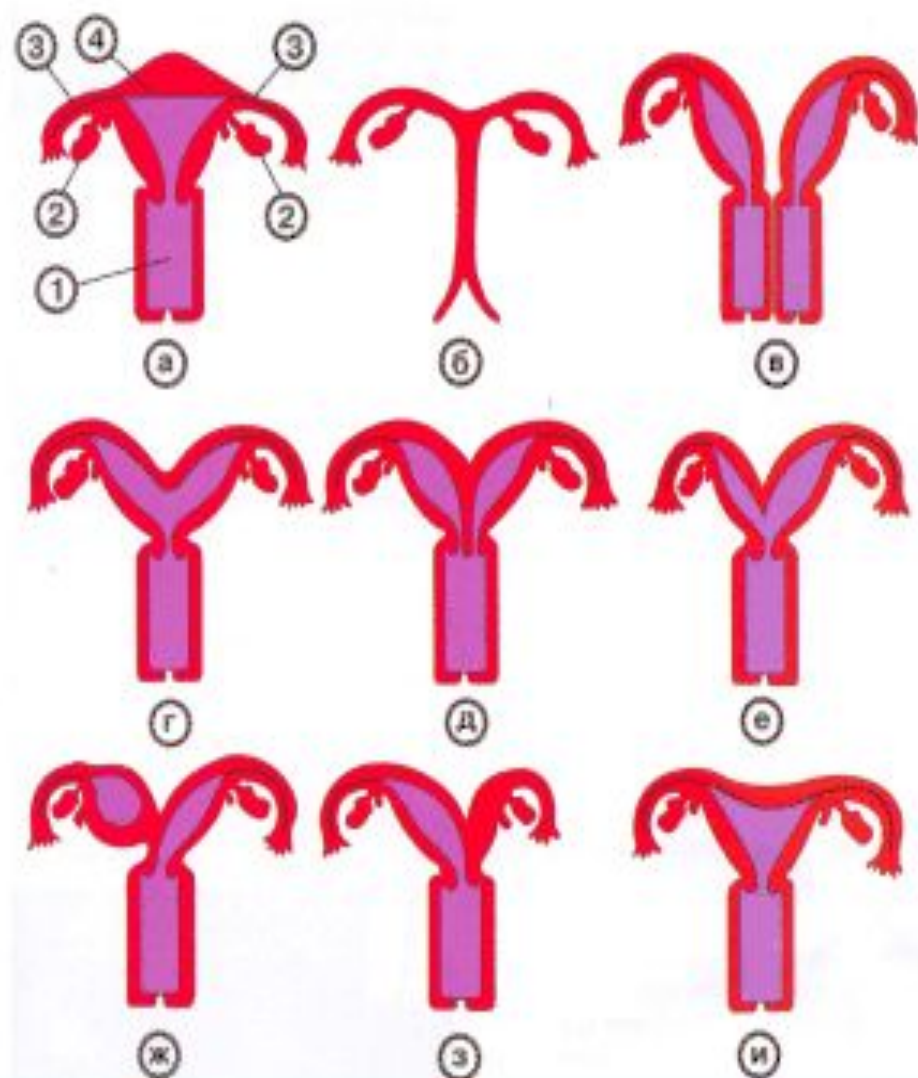
ж - двурогая матка с

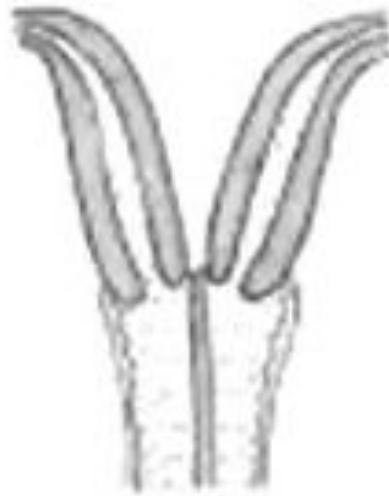
функционирующим замкнутым рогом;

з — двурогая матка

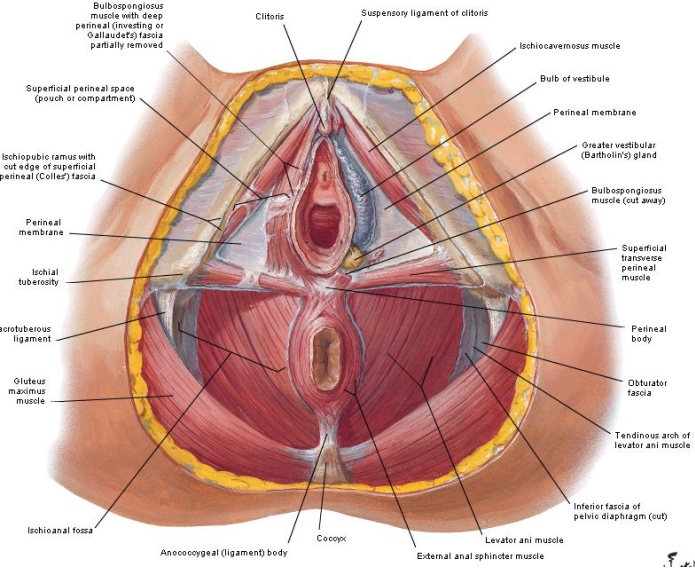
с атрезированным левым рогом;

и - седловидная матка.





Perineum

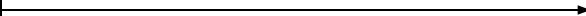


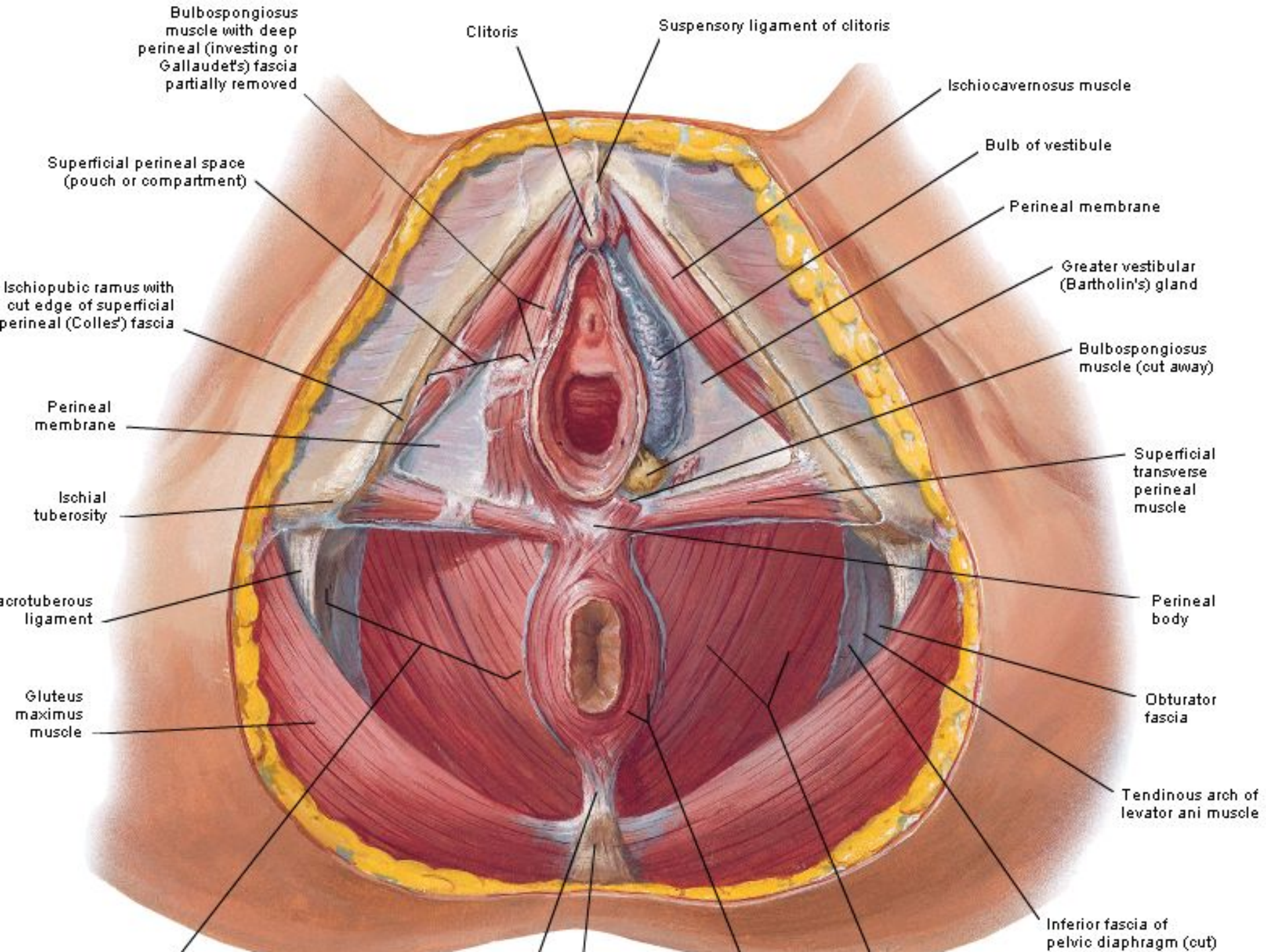
Diafragma urogenitale

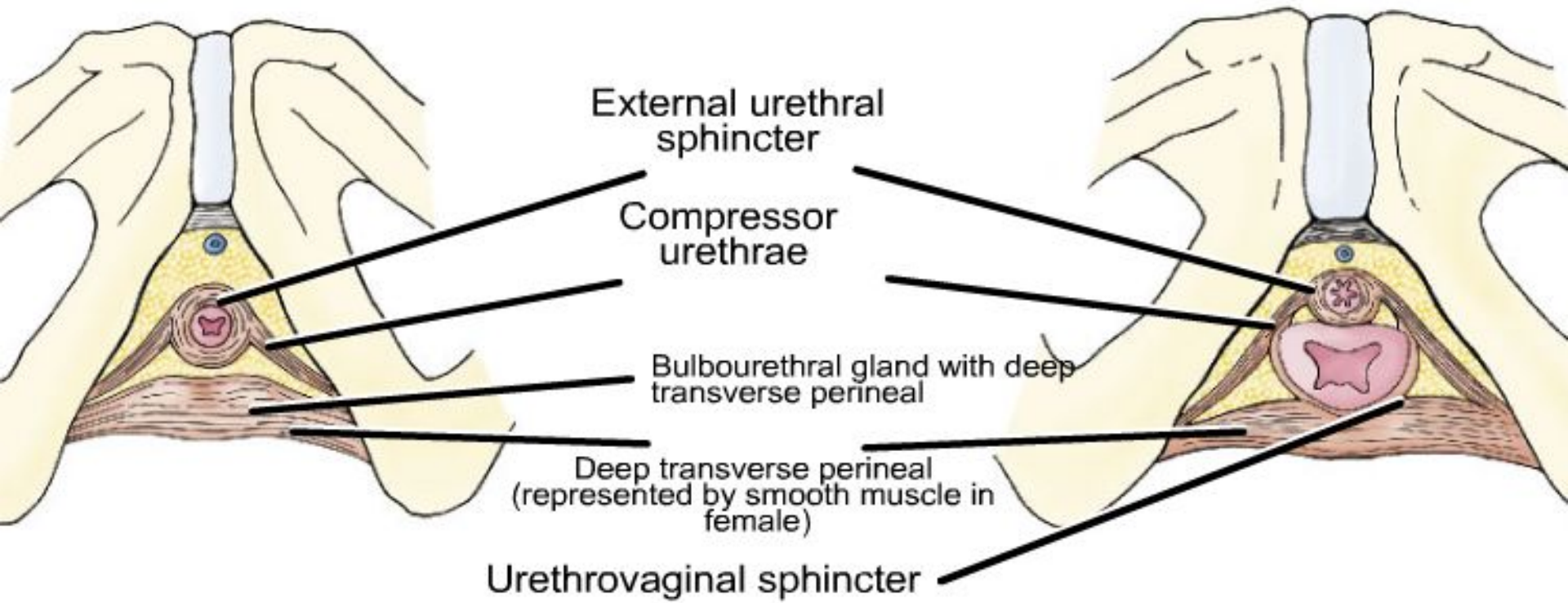
Trigonum urogenitale

Diafragma pelvis

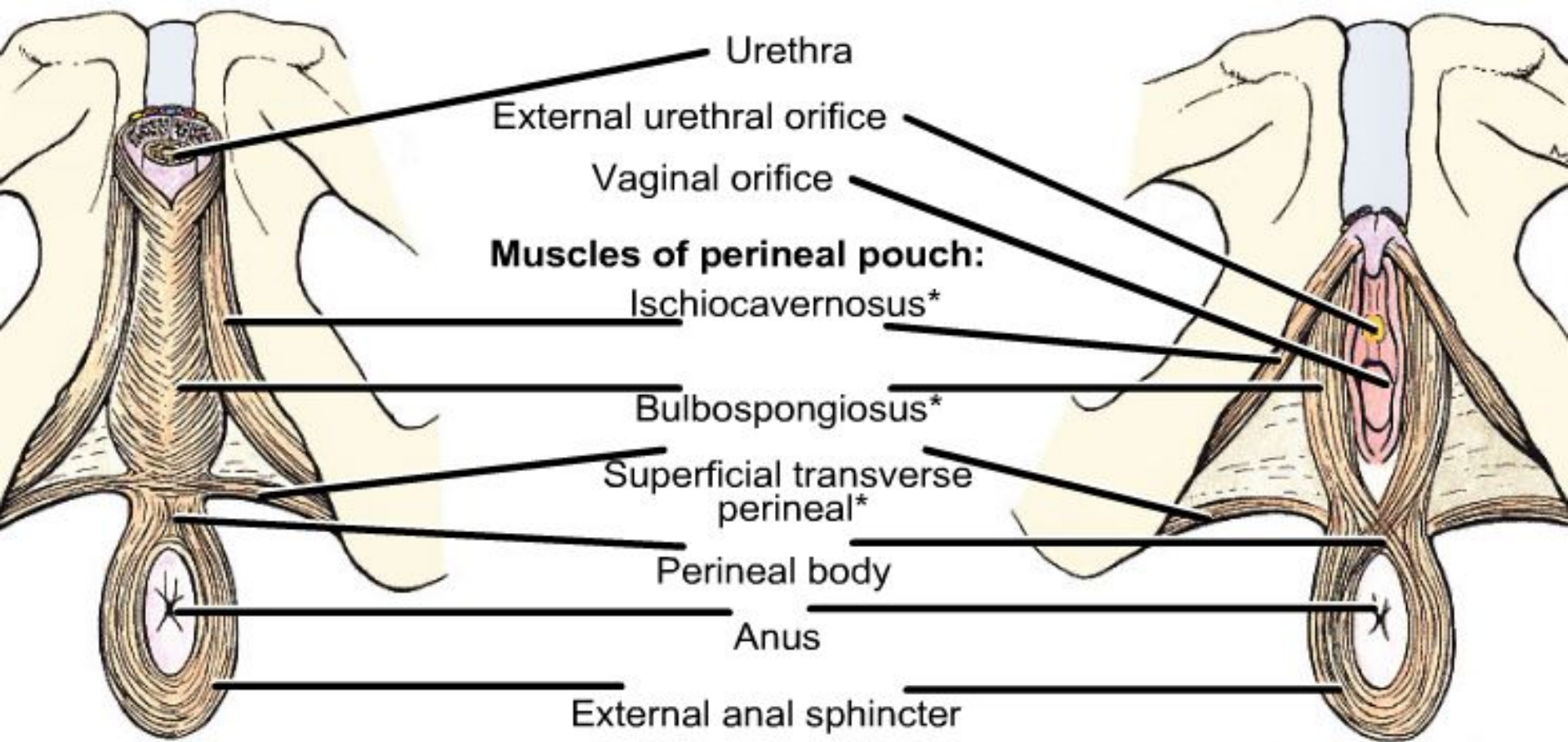
Trigonum anale







External urethral sphincter, urethrovaginal sphincter, and compressor urethrae. *Left*, male; *right* female.



Urethra

External urethral orifice

Vaginal orifice

Muscles of perineal pouch:

Ischiocavernosus*

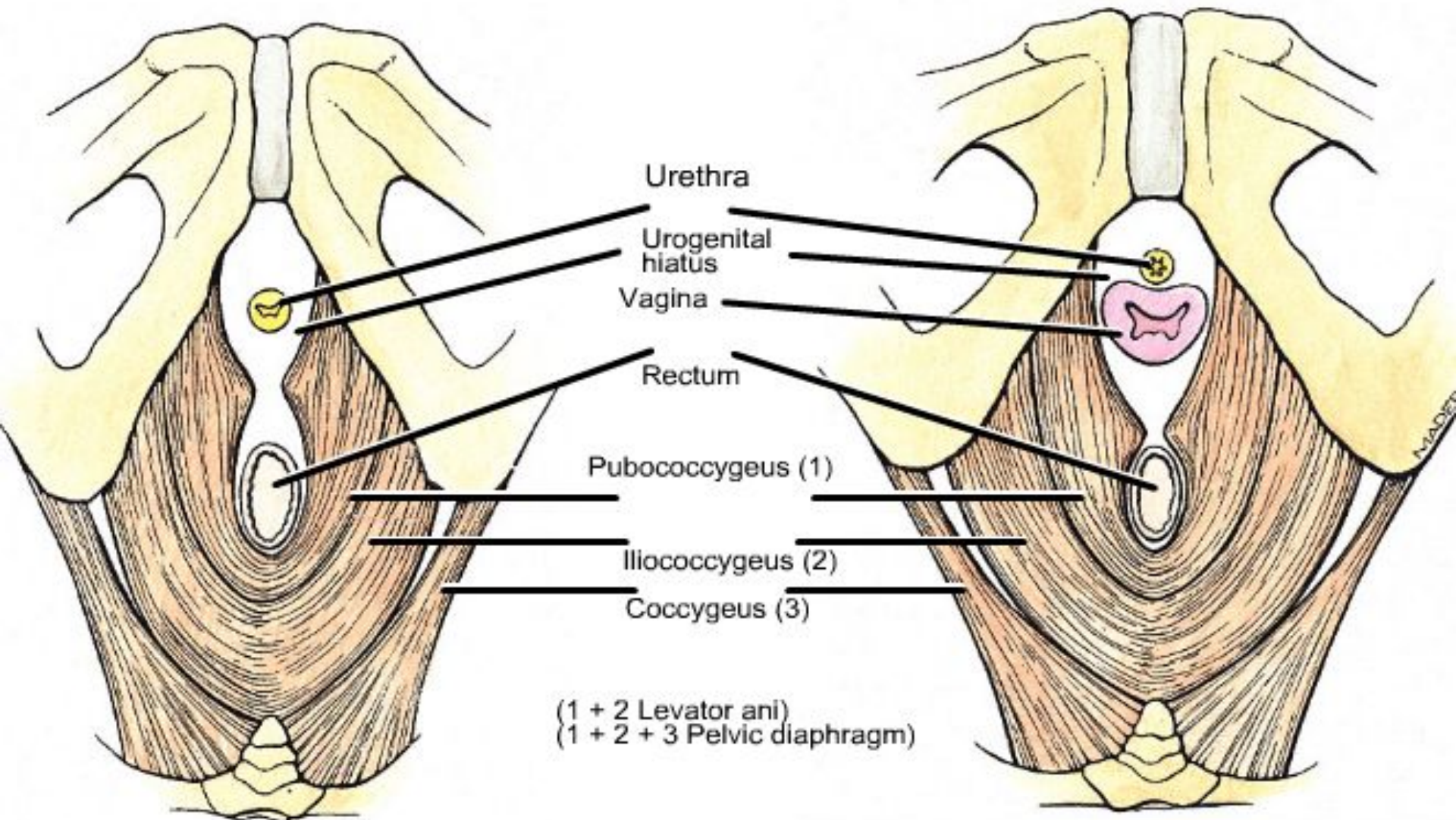
Bulbospongiosus*

Superficial transverse perineal*

Perineal body

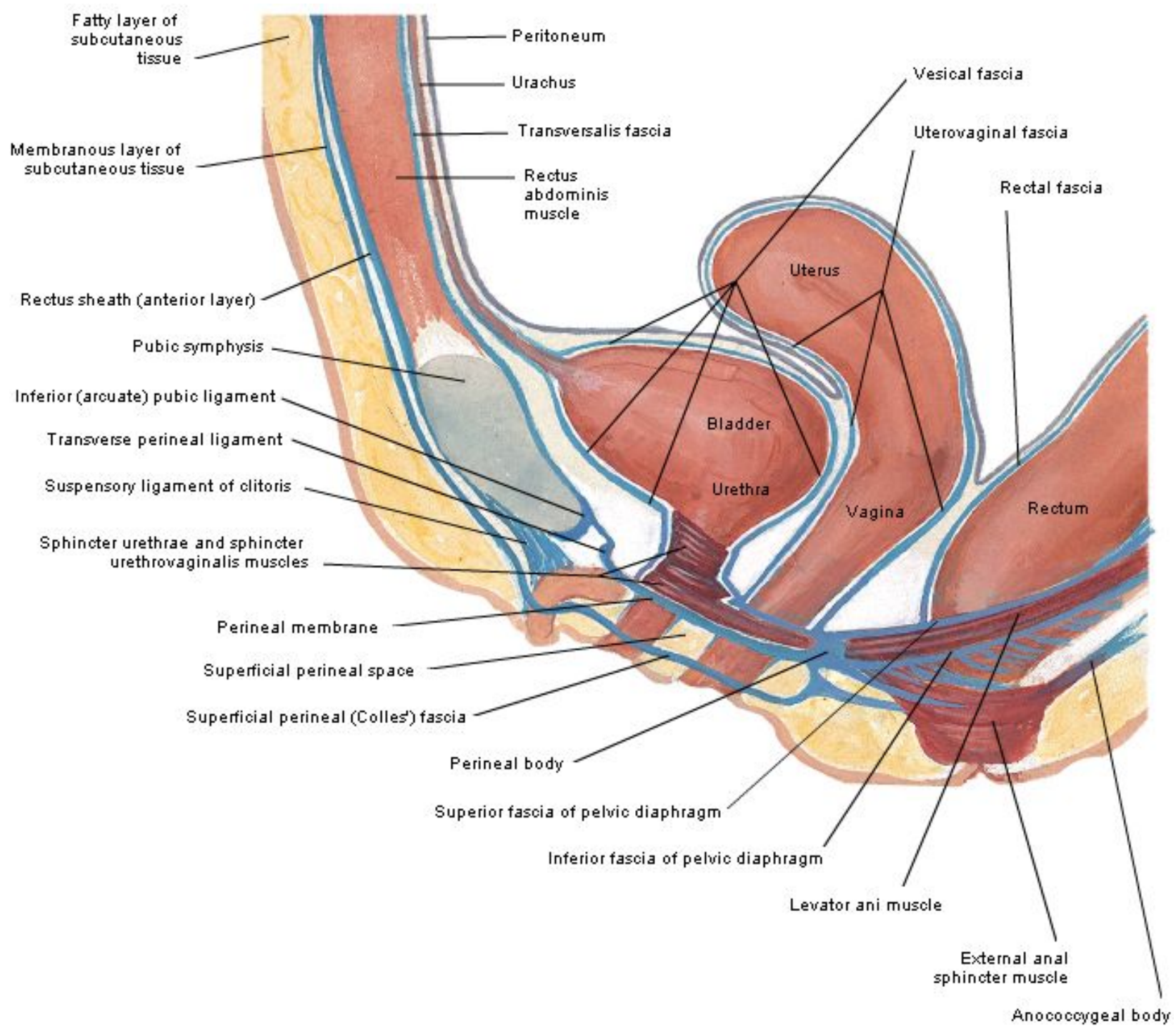
Anus

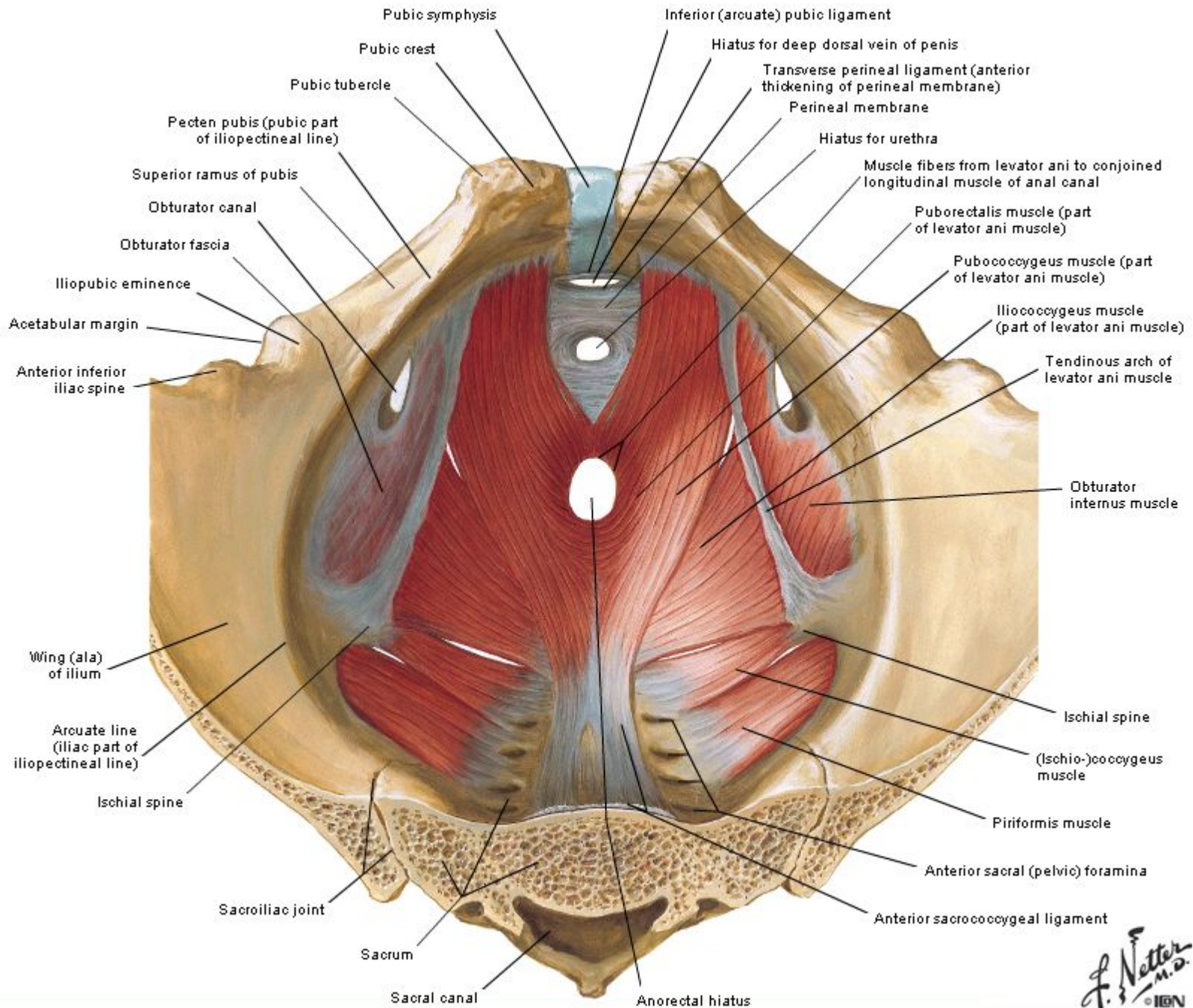
External anal sphincter

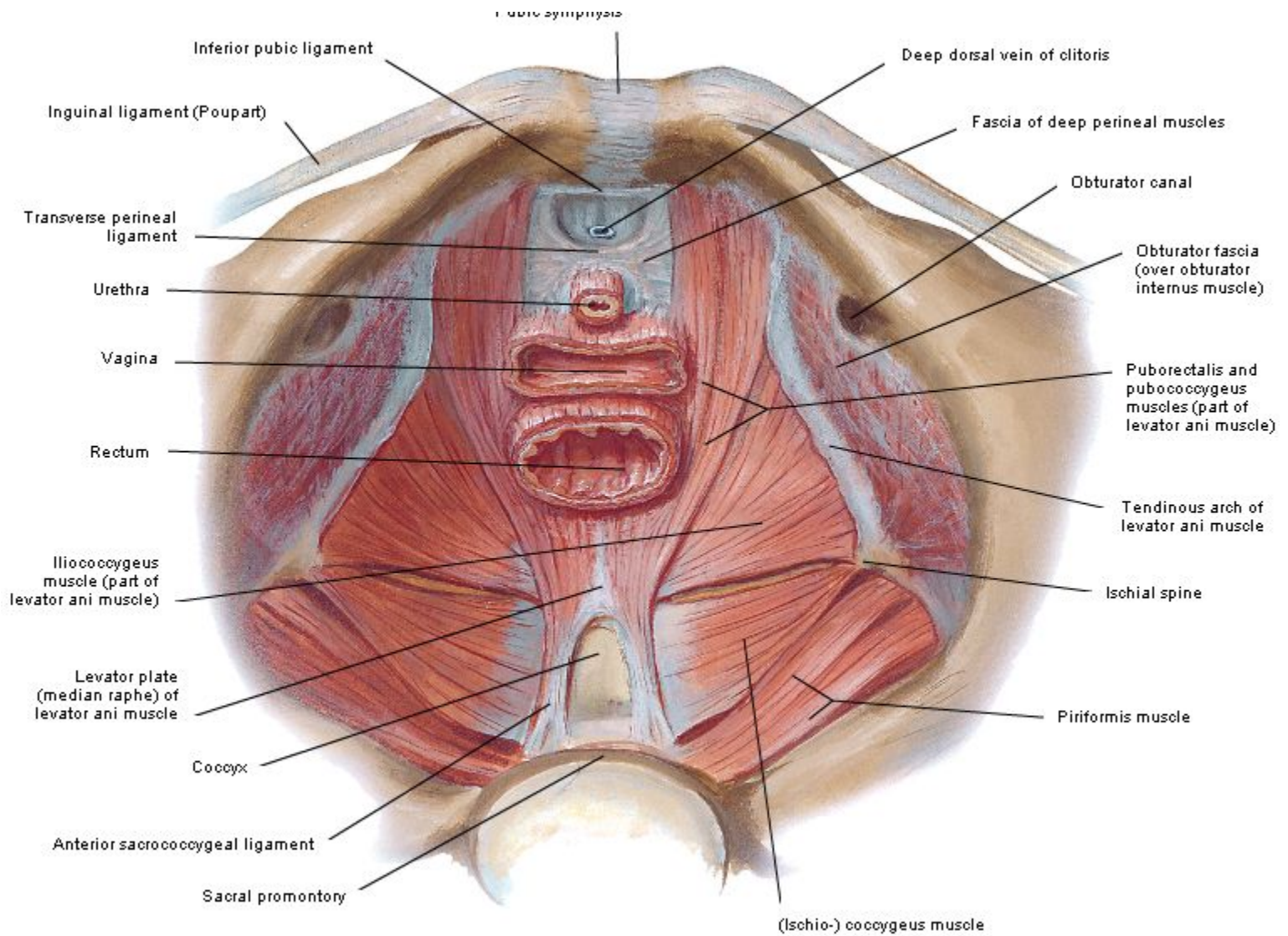


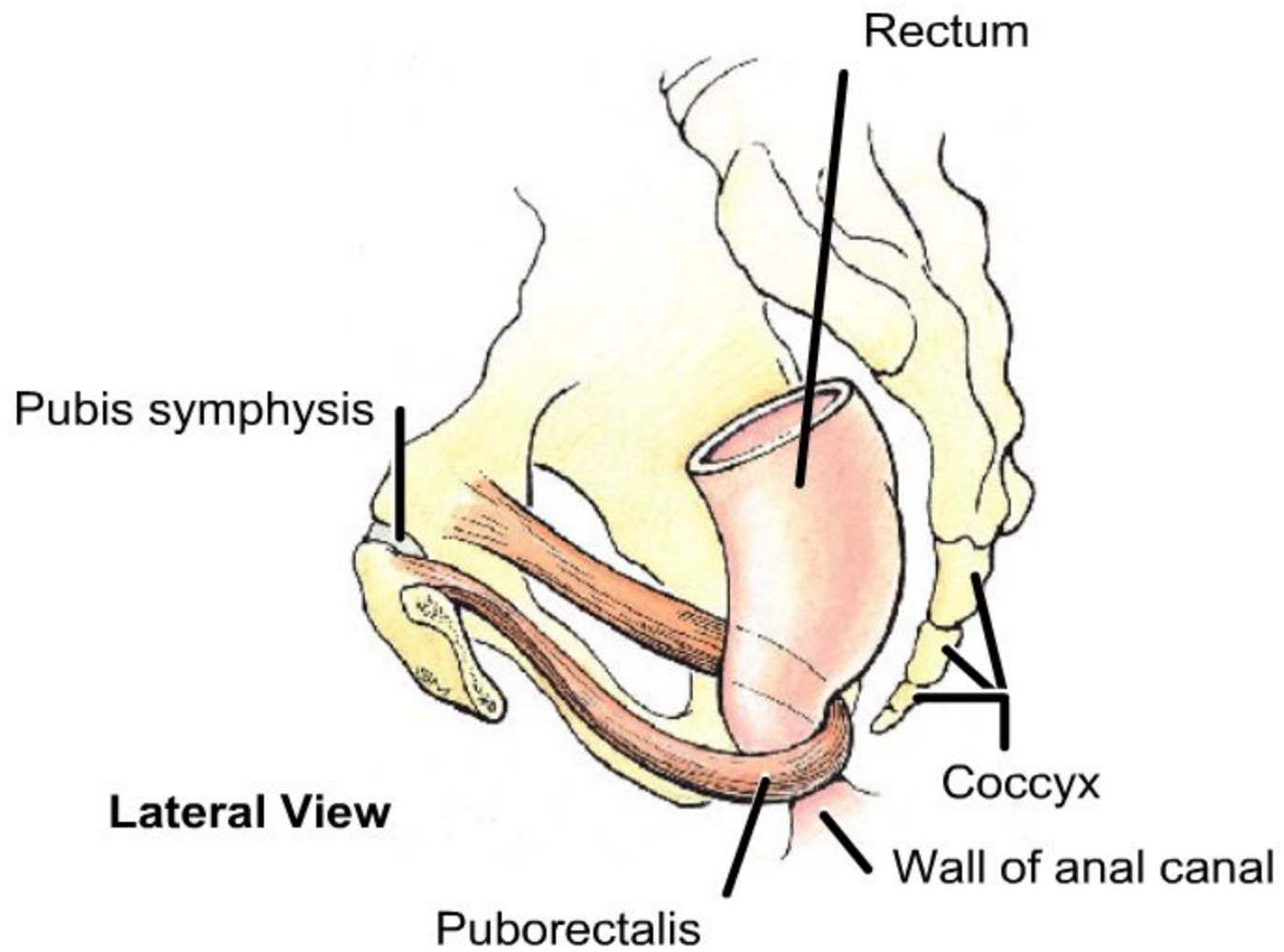
Male

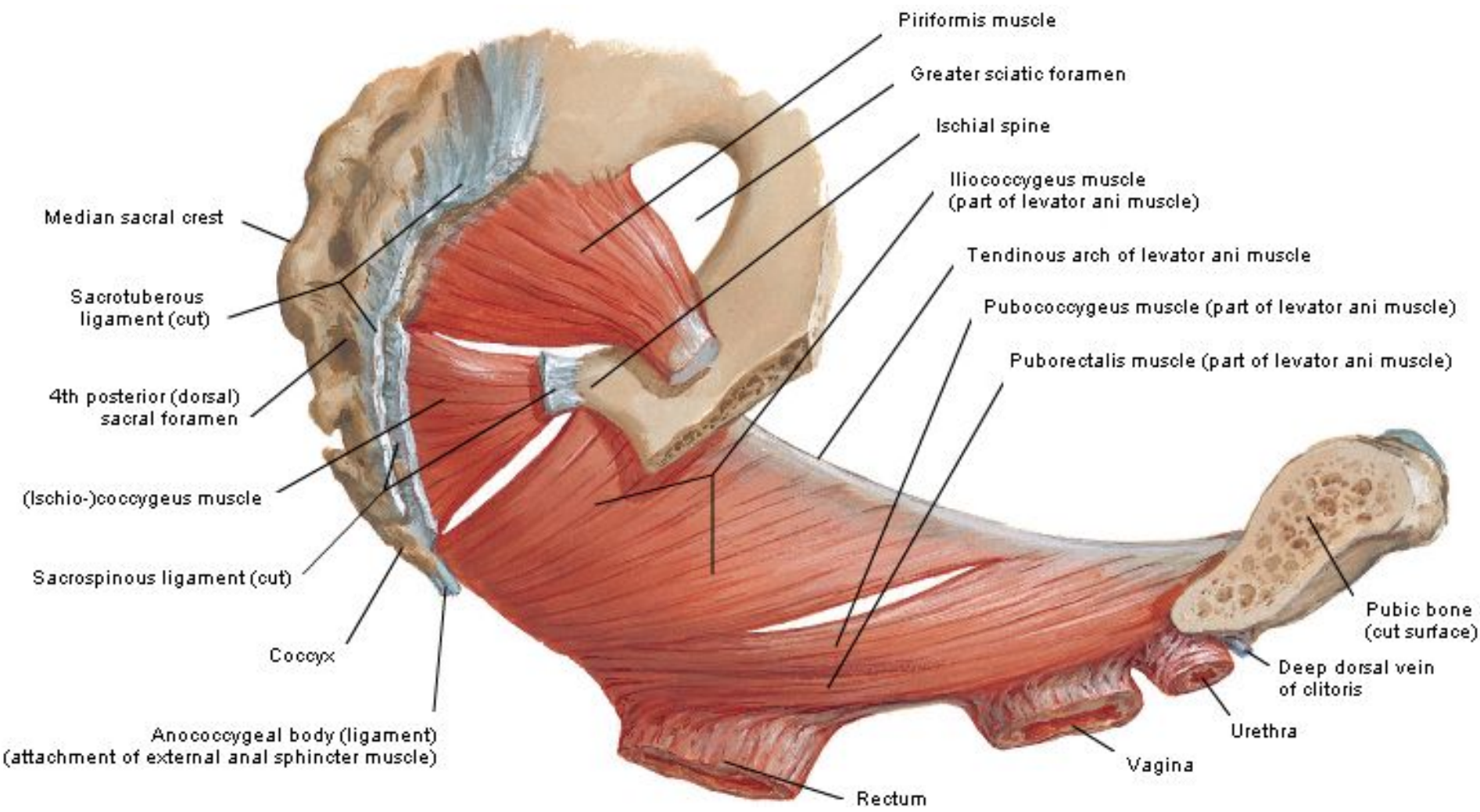
Female

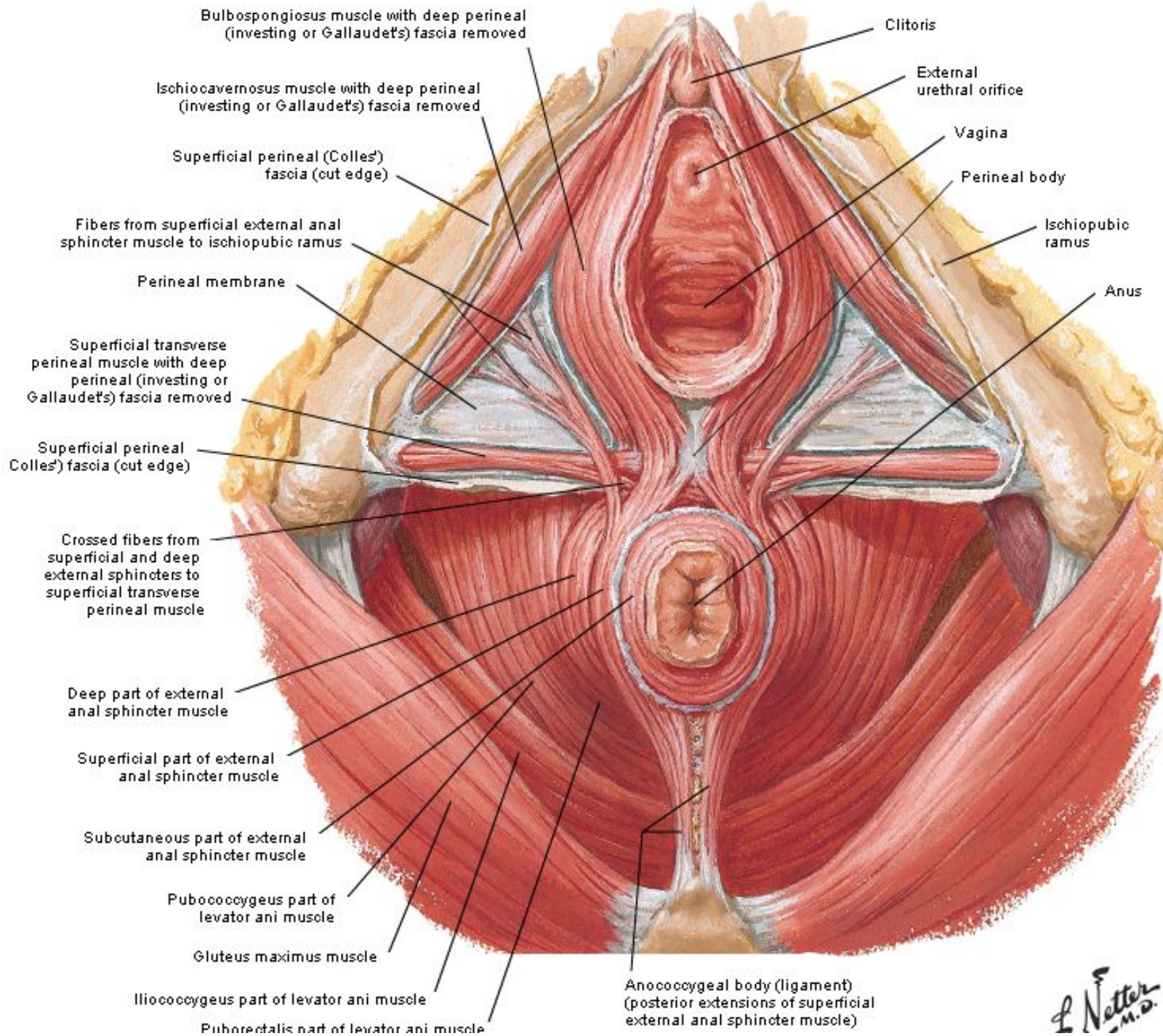












L. Netter
 M.D.

