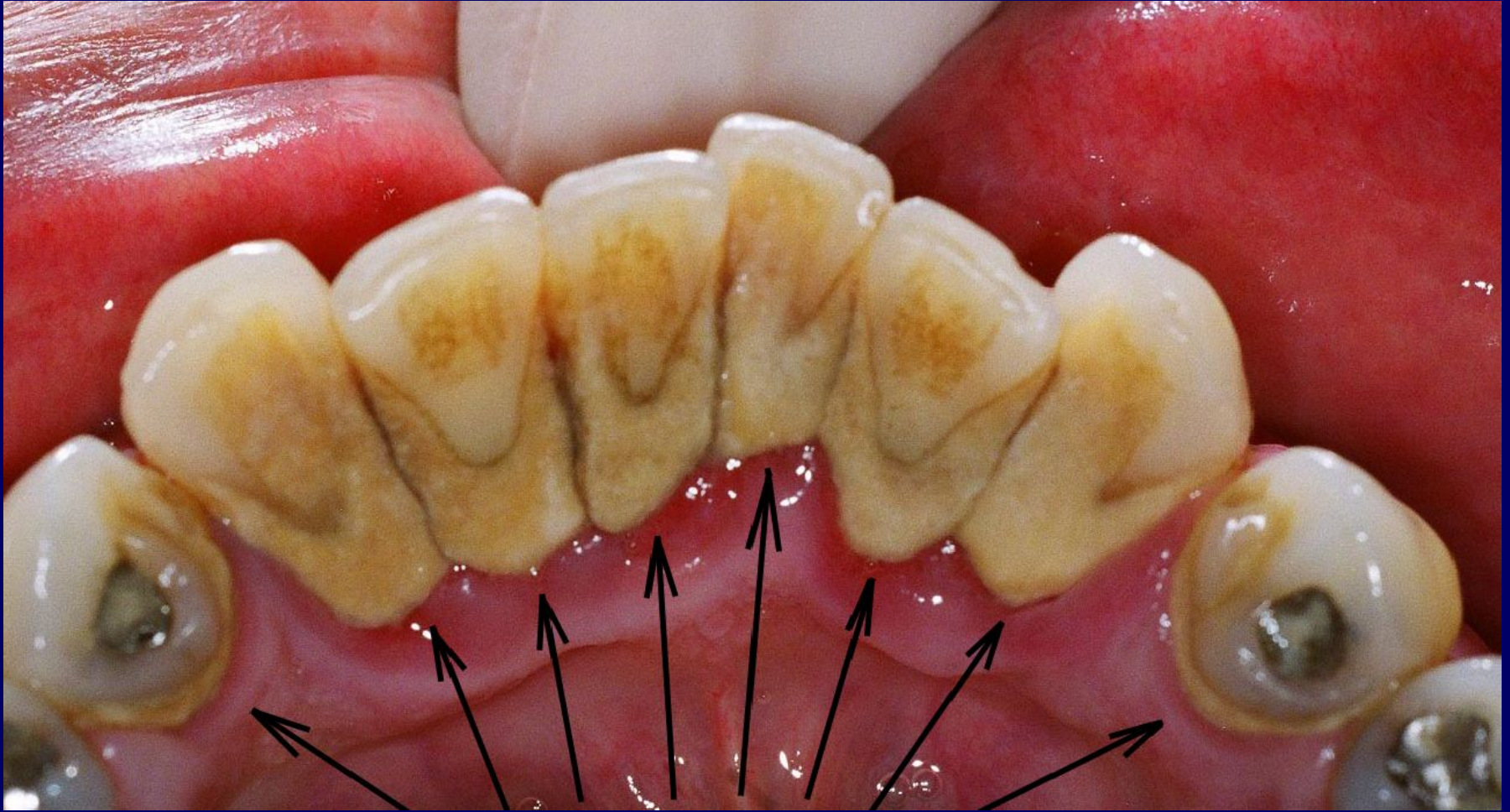


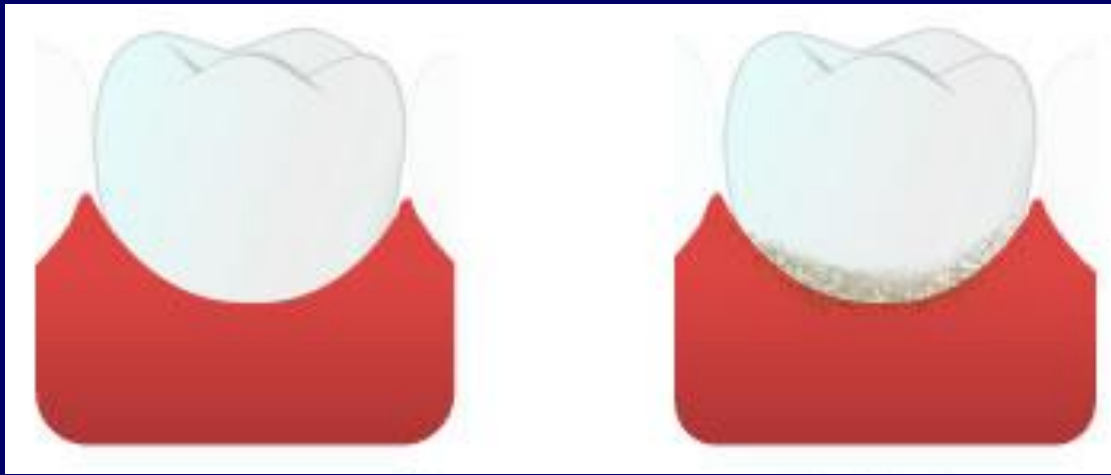
**MÉCANISMES  
BIOCHIMIQUES DU  
DÉVELOPPEMENT DES  
PATHOLOGIES DES  
TISSUS DE LA CAVITÉ  
BUCCALE**

# PLAQUE DENTAIRE



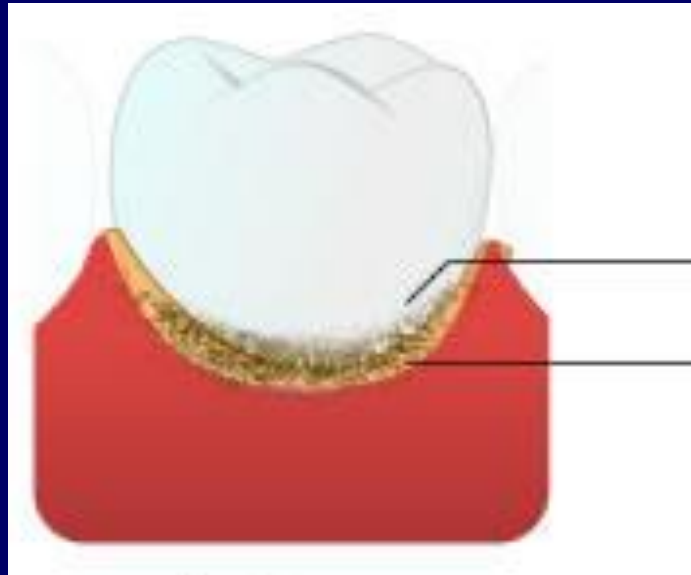
# TARTRE DENTAIRE





**gencive et dent  
nettes**

**plaque dentaire  
souple**

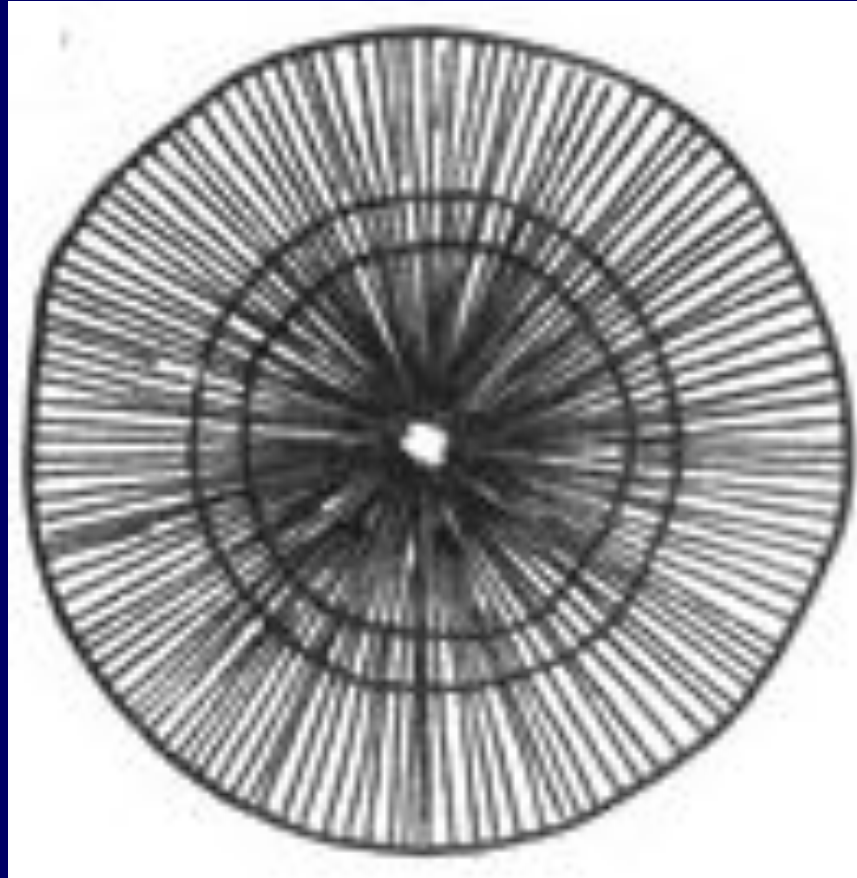


**bactéries**

**plaque dentaire**

**tartre dentaire**

# MODÈLE DE SPHEROLITE



# CARIE DENTAIRE



# DÉMINÉRALISATION DE L'EMAIL

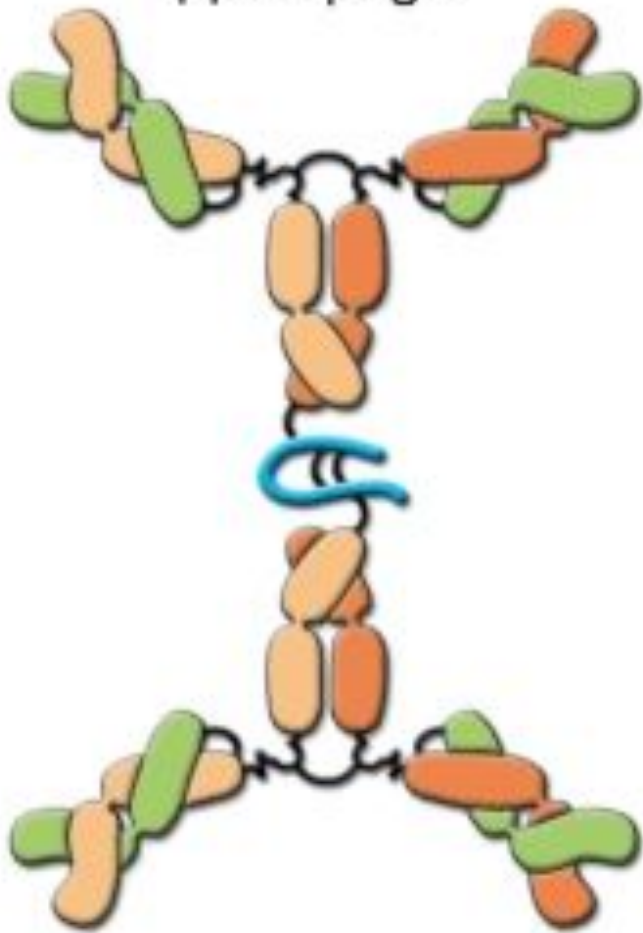


# FLUOROSE





Димер IgA



Ј-цепь



Дисульфидные  
связи

# IMMUNOGLOBULINE SÉCRÉTOIRE A

# PARODONTITIS



# GINGIVITE



# SIALOLITHIASIS

