



- ▶ Ministry of Health Protection of the Ukraine
- ▶ Zaporozhye state medical university
- ▶ Department of skin and venereal diseases

# ▶ Psoriasis

*Lichen planus*

▶ Zaporozhye 2016

# Psoriasis



# Classification of psoriasis

- ▶ **Punctuated psoriasis** is characterized by papulae up to a pinhead in size.
- ▶ **Psoriasis guttata:** the lesions reach a size of lentil.
- ▶ **Psoriasis nummularis:** the lesions are 2-5 kopecks in size.
- ▶ **Psoriasis papillamatoso:** papillomatous growing foci are observed.
- ▶ **Psoriasis annularis:** the lesions are ring-shaped.
- ▶ **Geographical or figured psoriasis:** the lesions suggest the coast outline on a geographical map.
- ▶ **Seborrheic psoriasis**
- ▶ **Erythroderma psoriaticum**
- ▶ **Arthropathy psoriasis**

# *Stages of psoriasis*

- ▶ **Progressive**
- ▶ **hospital**
- ▶ **regressive**

# *Type of psoriasis*

- ▶ **Winter type**
- ▶ **Summer type**
- ▶ **Mixed type**

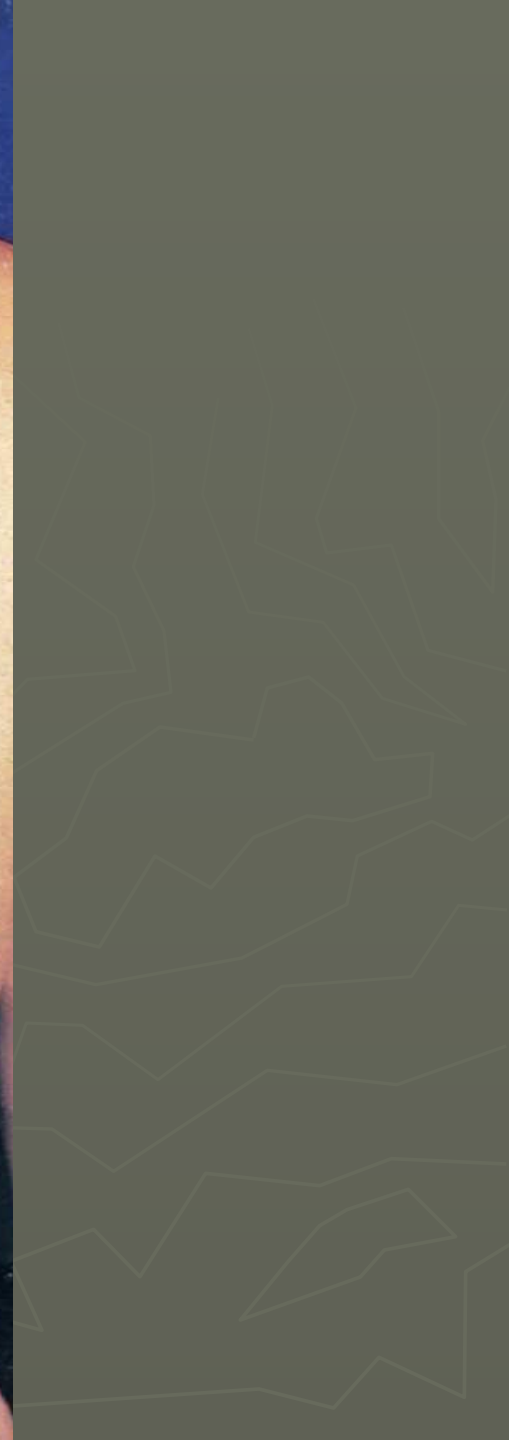






*Psoriasis vulgaris (phaenomena isomorphe Kobner)*









*Psoriasis unguium*



*Psoriasis unguium*





*Psoriasis vulgaris  
in stadio  
regressive*



*Psoriasis  
exsudativa*





*Psoriasis  
exsudativa*



*Psoriasis  
exsudativa*





*Psoriasis  
exsudativa*



- ▶ *Psoriasis*
- ▶ *arthropathica*





*Erythrodermia  
psoriatic*





*Psoriasis pustulosa*





- ▶ *Psoriasis*
- ▶ *pustulosa*

# Lichen ruber planus











*Lichen  
ruber  
planus  
annulatus*





*Lichen  
ruber  
planus  
verrucosus*



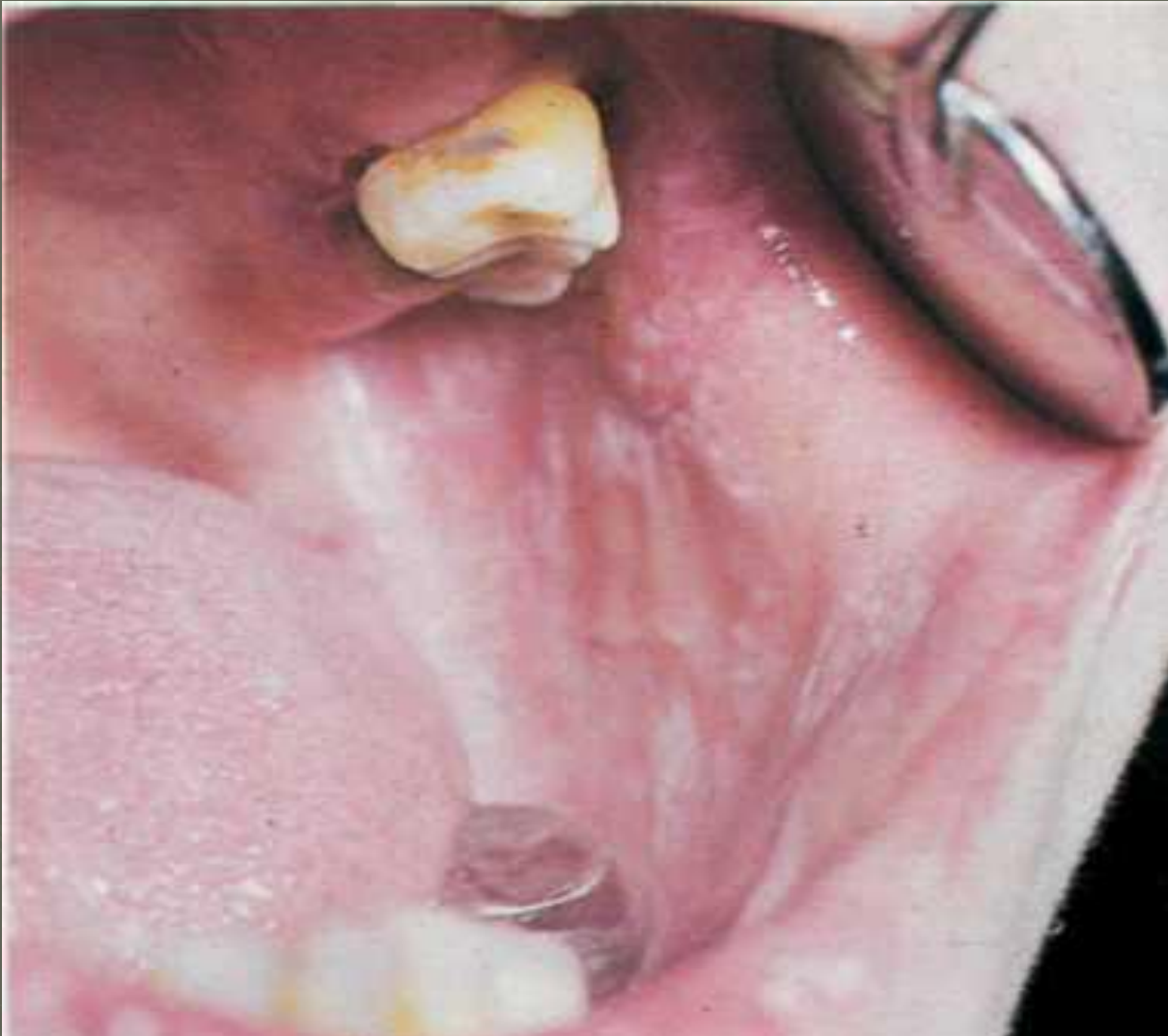
*Lichen ruber  
planus  
zosteriformis*





*Lichen ruber planus  
(phaenomena  
isomorphe Kobner)*

# *Lichen rubber planus mucosae*





# *Lichen rubber planus unguium*



# *Lichen rubber planus*





