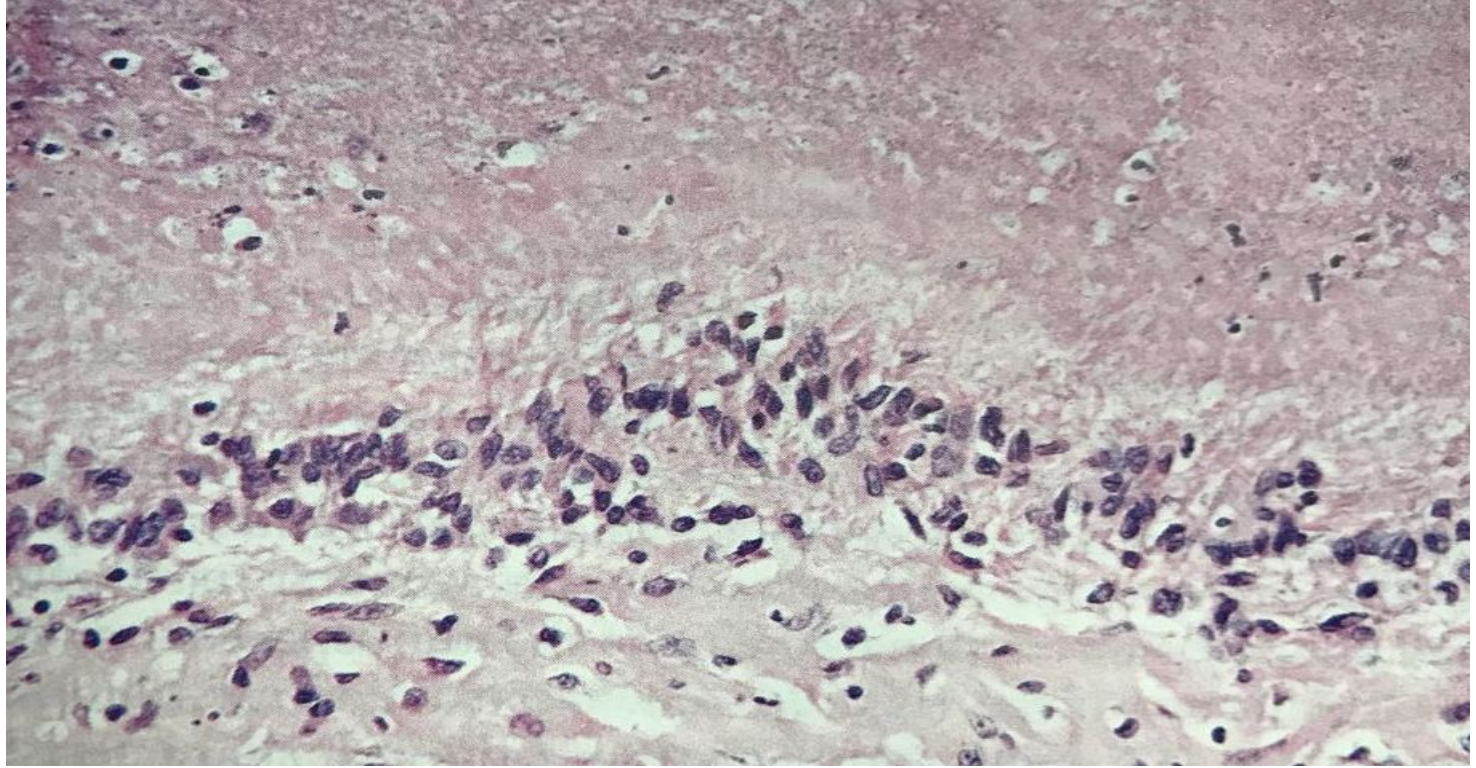
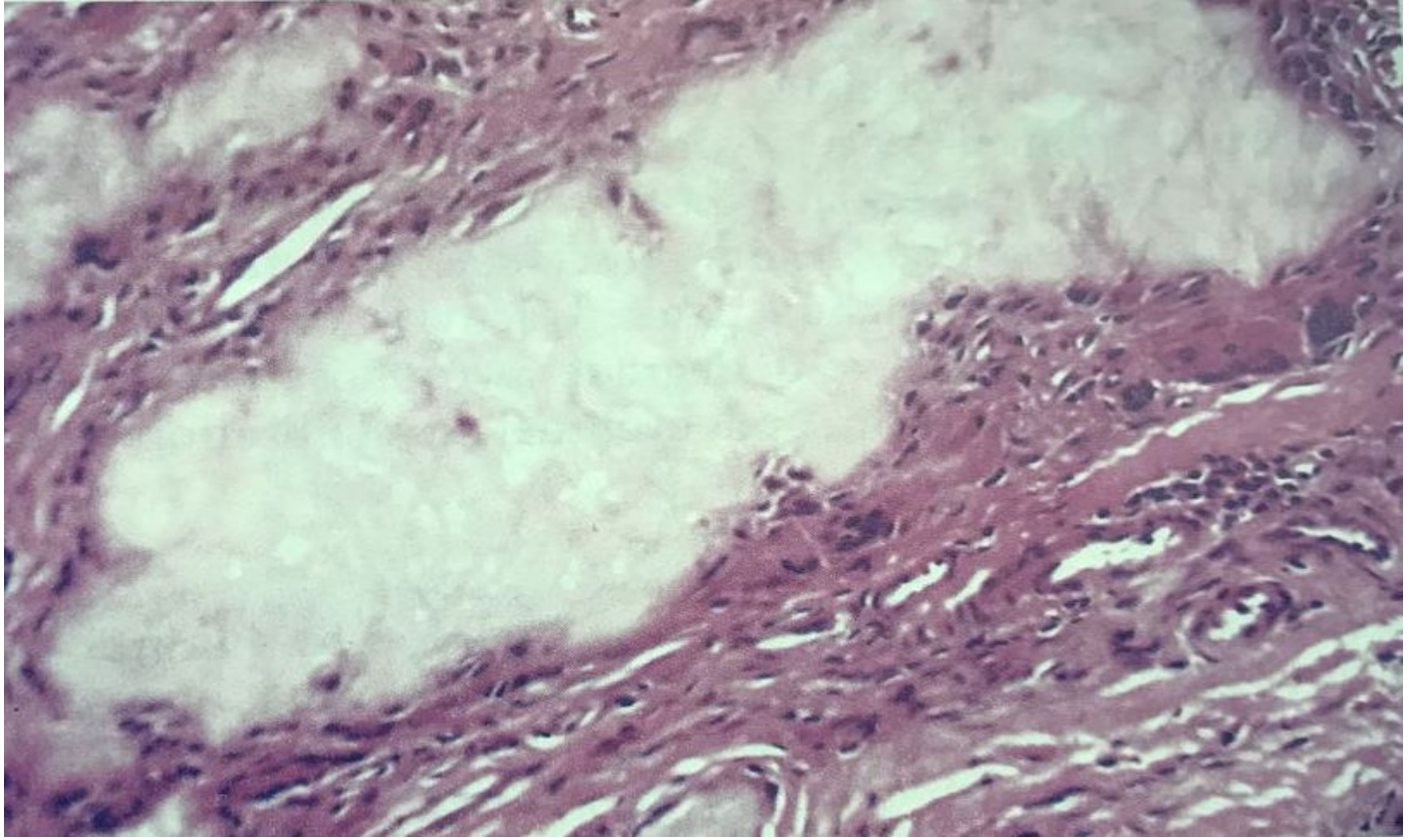


Модуль «Опорно-двигательная система»

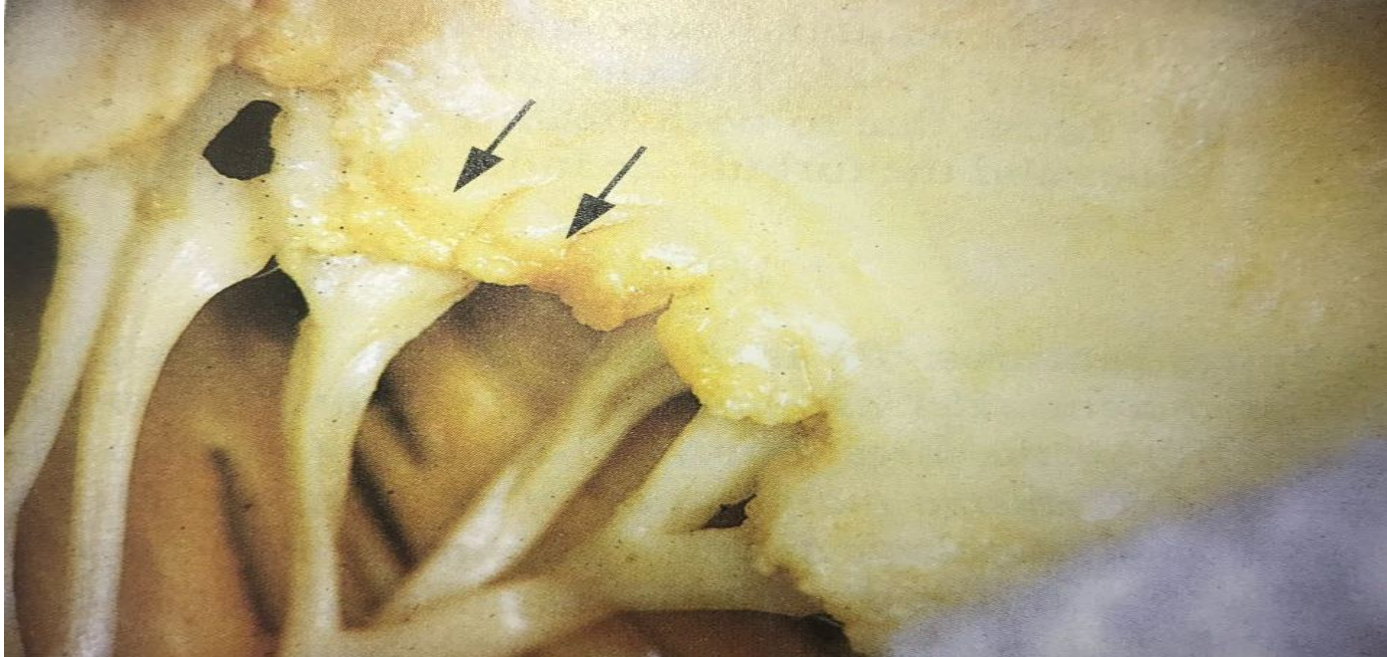
Тема №34: Системные заболевания:
ревматоидный артрит, ревматизм,
системная красная волчанка,
системная склеродермия, узелковый
периартериит, дерматомиозит,
болезнь Бехтерева.



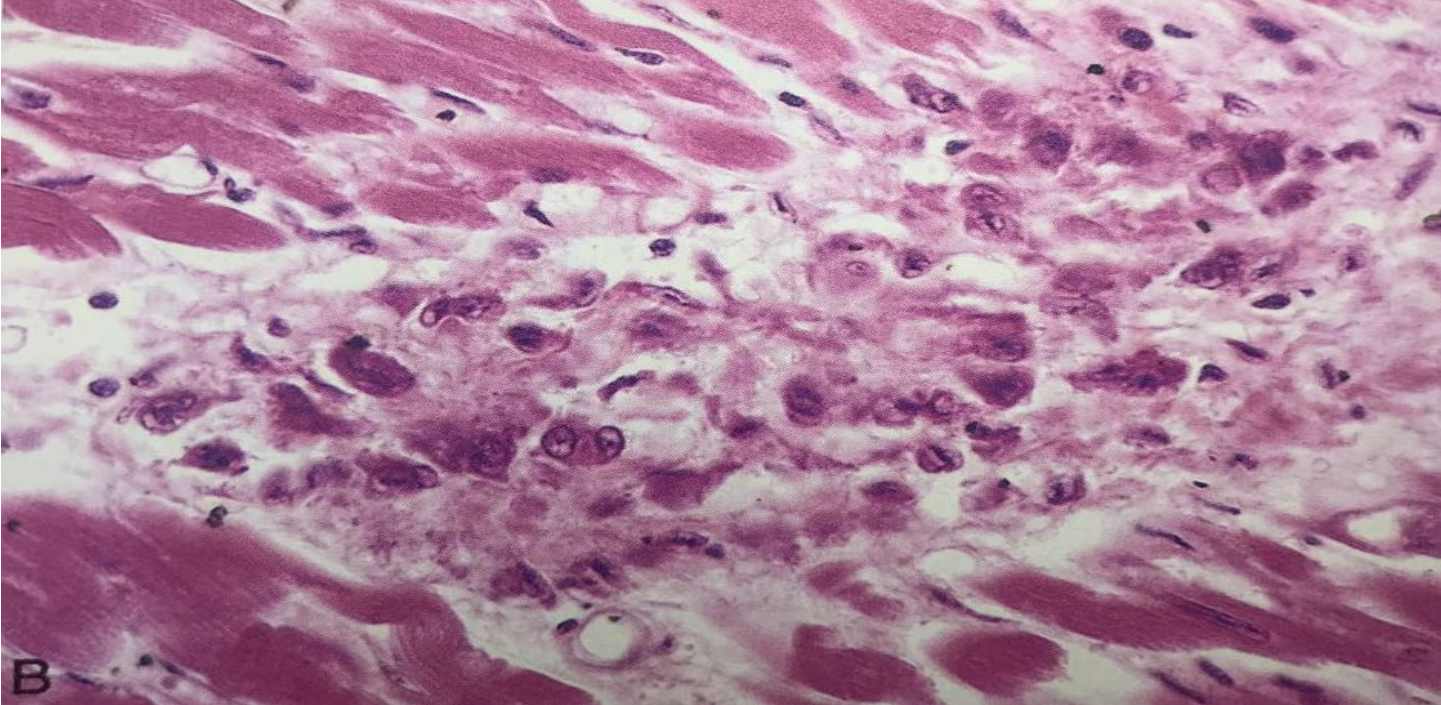
Некроз аймағы бар теріастылық
ревматоидты түйін



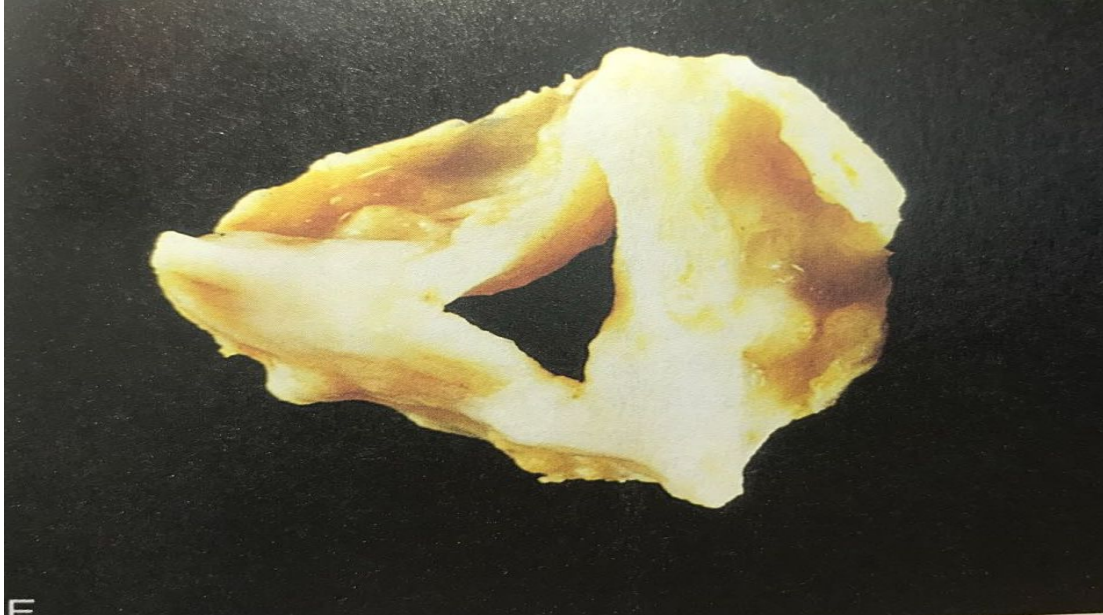
Подагралық түйін



Жүректің жедел және созылмалы
ауруы



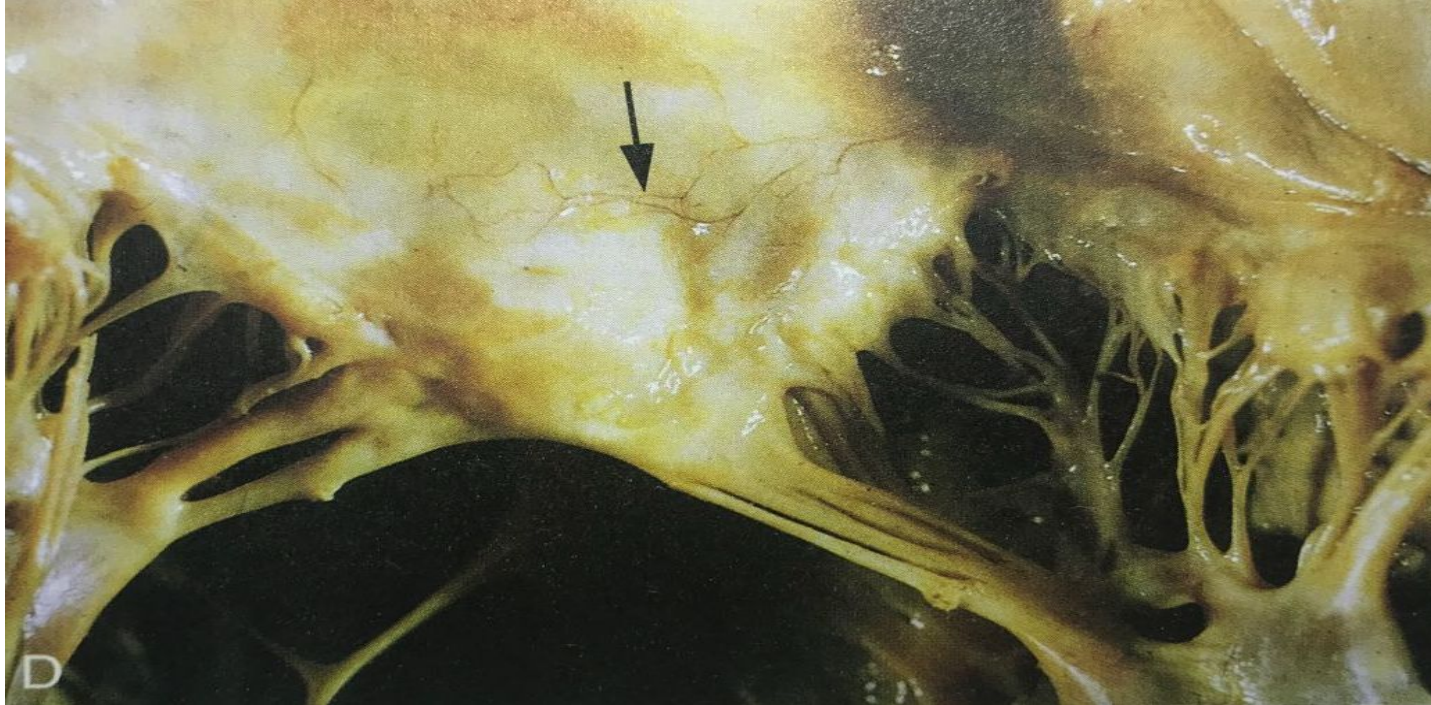
Жүректің жедел және созылмалы
ауруы



Жүректің жедел және созылмалы
ауруы

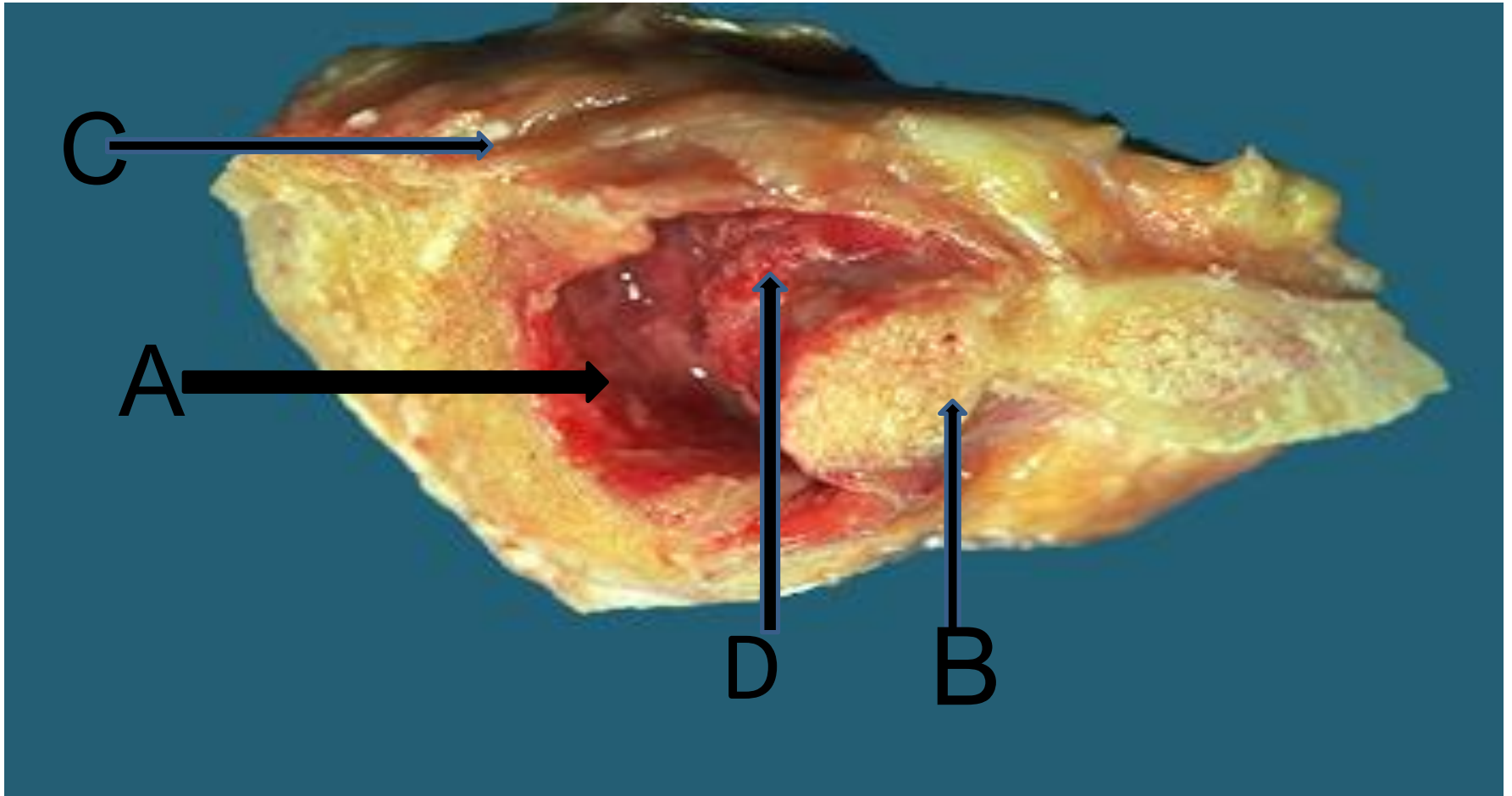


FIGURE 12-24 Acute and chronic rheumatic heart disease. *A*, Acute rheumatic mitral valvulitis superimposed on chronic rheumatic heart disease. Small vegetations (verrucae) are visible along the line of closure of the mitral valve leaflet (*arrows*). Previous episodes of rheumatic valvulitis have caused fibrous thickening and fusion of the chordae tendineae. *B*, Microscopic appearance of Aschoff body in a patient with acute rheumatic carditis. The myocardial interstitium has a circumscribed collection of mononuclear inflammatory cells, including some large histiocytes with prominent nucleoli and a prominent binuclear histiocyte, and central necrosis. *C* and *D*, Mitral stenosis with diffuse fibrous thickening and distortion of the valve leaflets, commissural fusion (*arrows*), and thickening and shortening of the chordae tendineae. Marked dilation of the left atrium is noted in the left atrial view (*C*). *D*, Opened valve. Note neovascularization of anterior mitral leaflet (*arrow*). *E*, Surgically removed specimen of rheumatic aortic stenosis, demonstrating thickening and distortion of the cusps with commissural fusion (*E*, reproduced from Schoen FJ, St. John-Sutton M: Contemporary issues in the pathology of valvular heart disease. *Human Pathol* 18:568, 1967.)



Жүректің жедел және созылмалы
ауруы

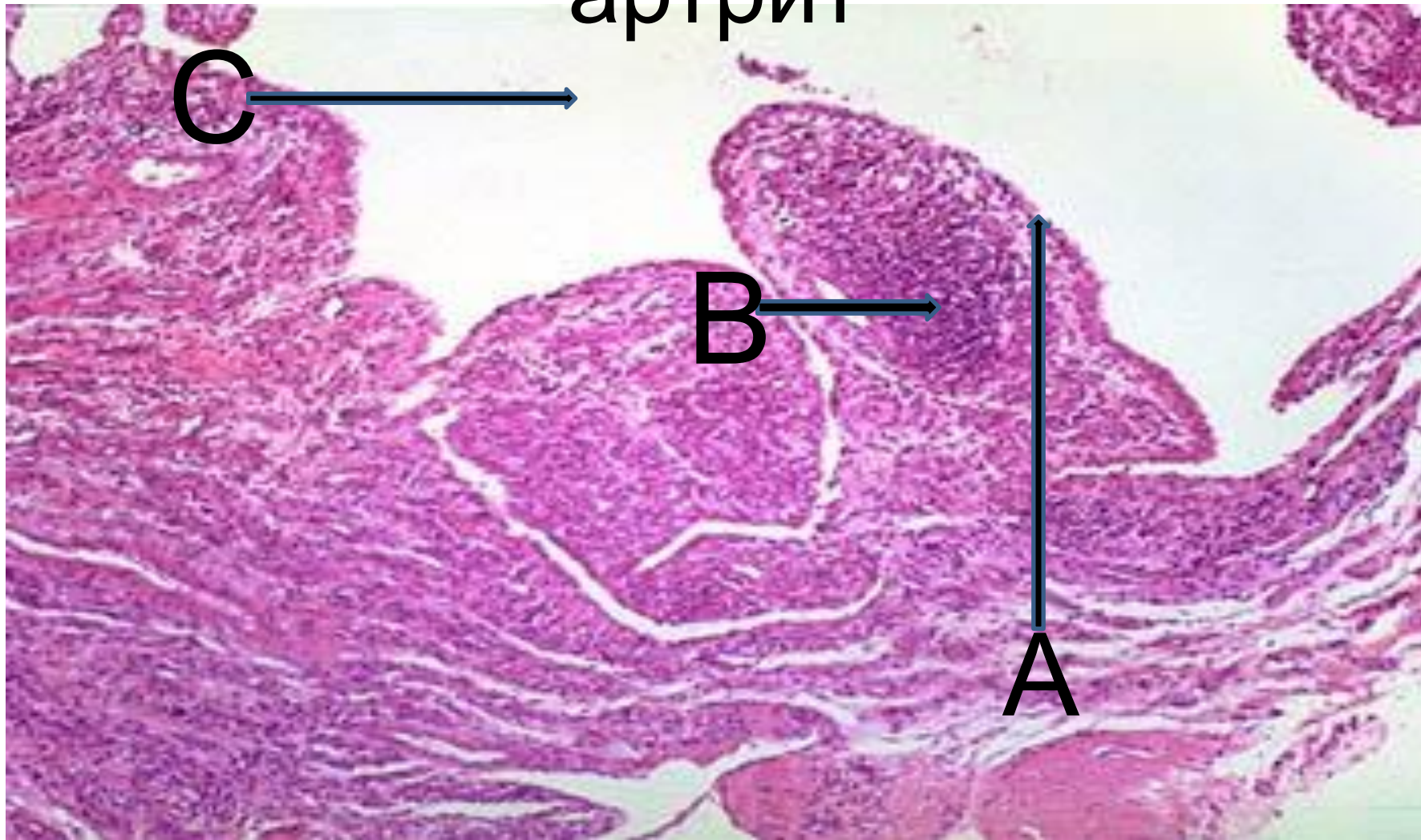
Ревматоидты артрит кезіндегі байлам



A-реактивті синовиальды тін; B- сүйек тінінің кесу зонасы; C-периартикулярлы жұмсақ тін; D-фибринді жіпшелел.

Синовиальды рвматоидты

артрит



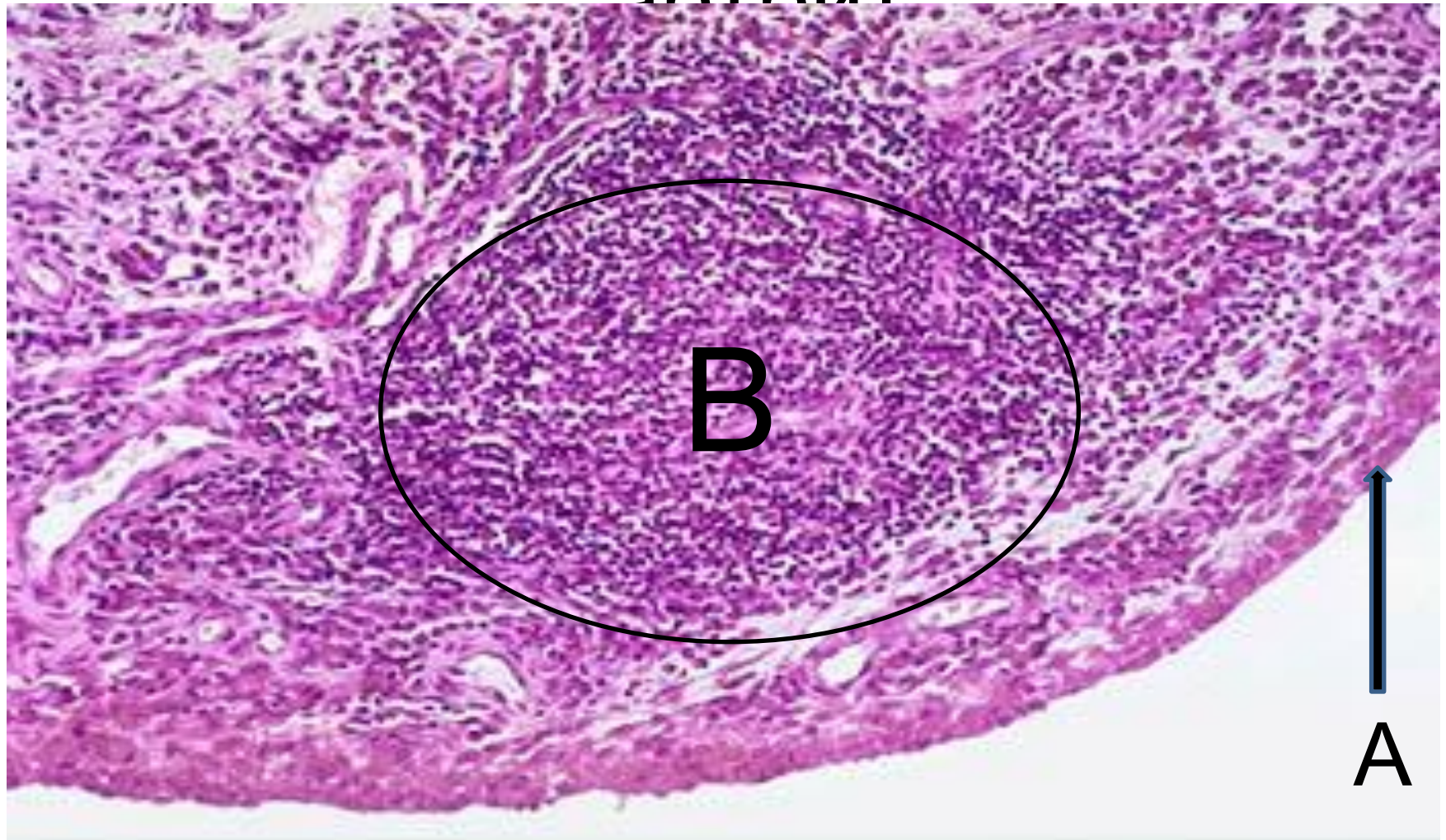
C

B

A

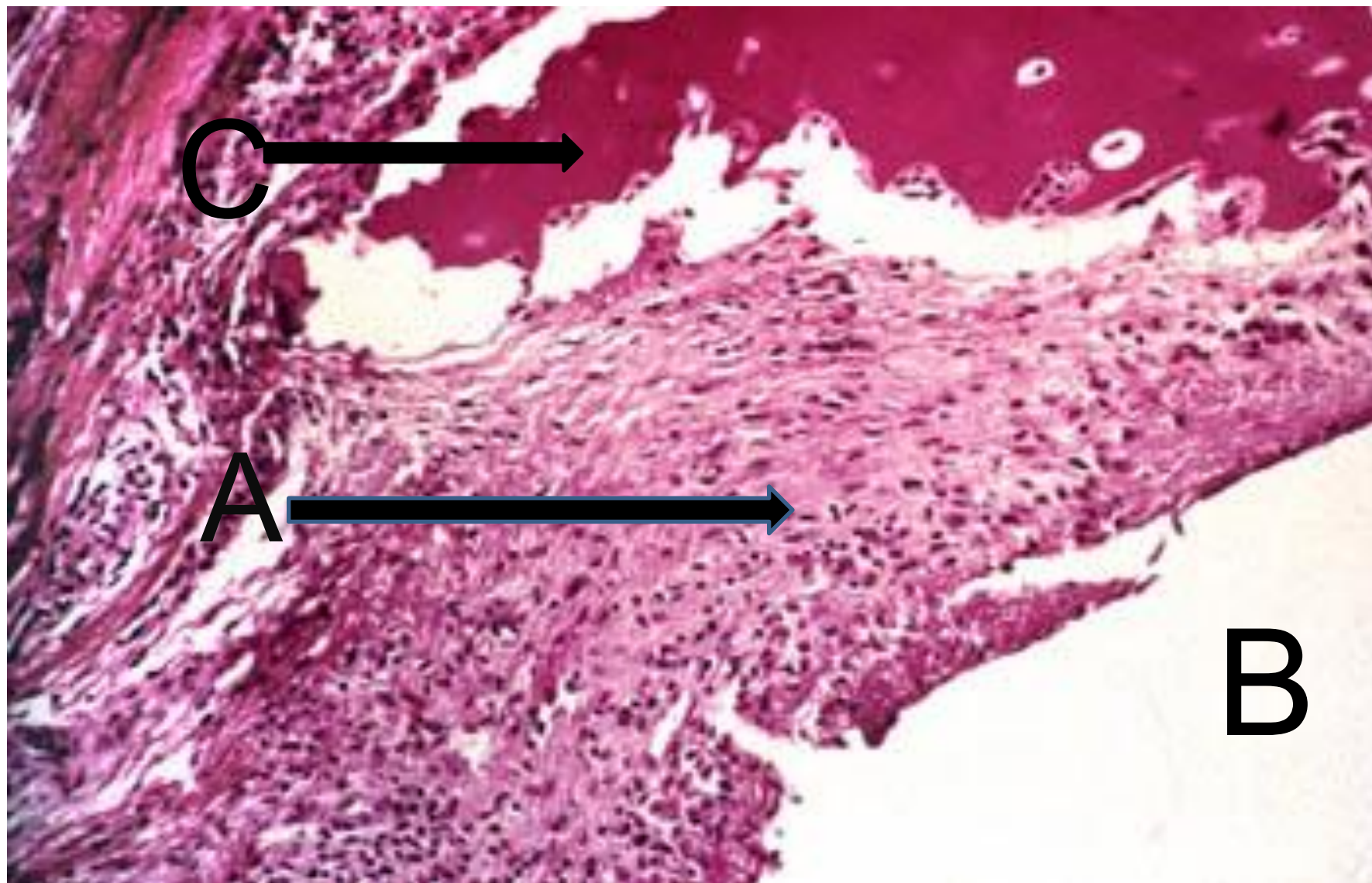
A-гиперпластикалық синовиальды мембрана;
B-лимфоидты жиналу; C-буындық қуыс

Синовиальды ревматоидты артрит



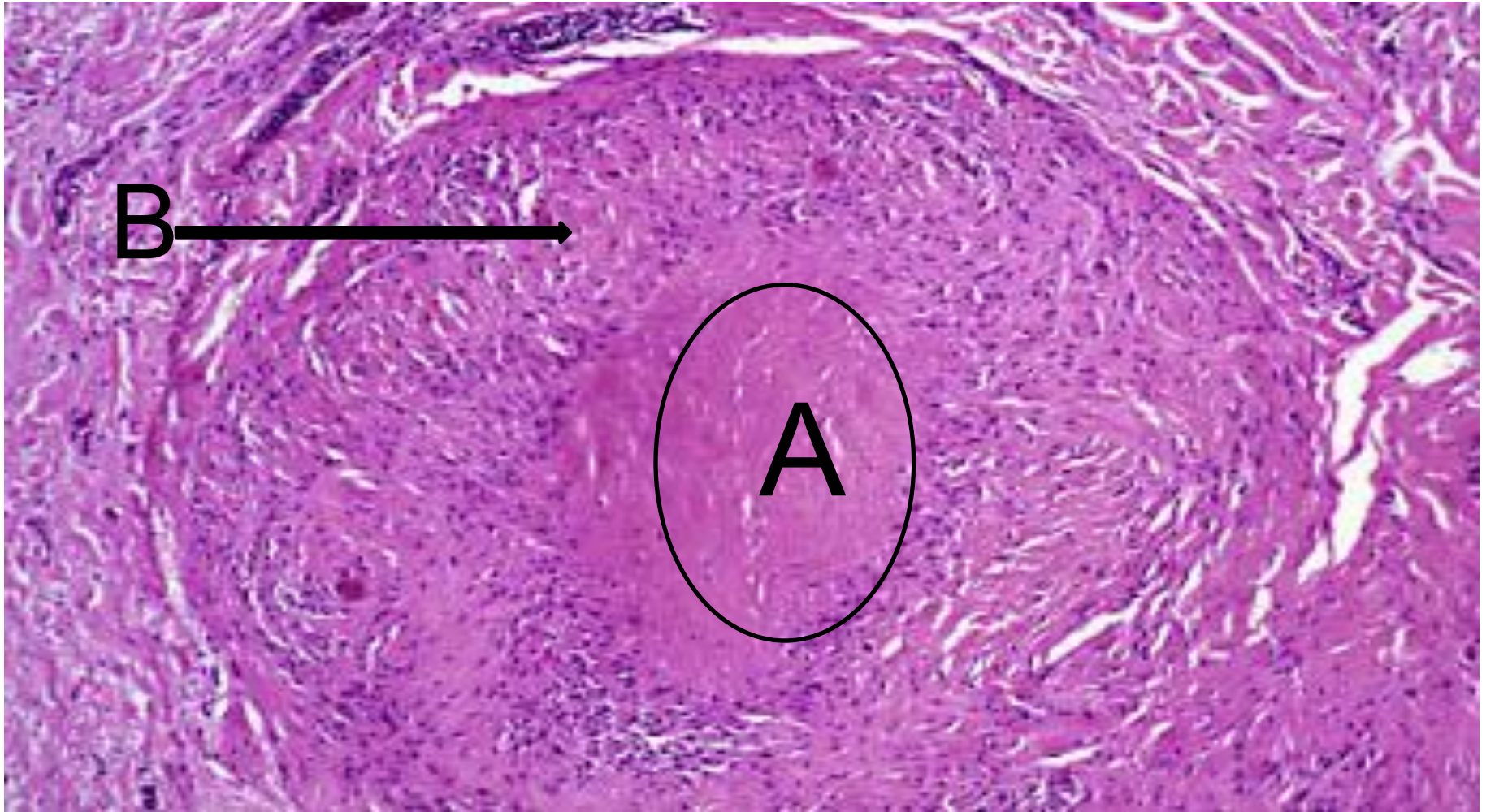
А-гиперпластикалық синовиальды тін; В-лимфоидты түйіндер

Синовиальды ревматоидты артрит



А-үзілу; В- буындық қуыс; С-сүйек

Ревматоидты түйіндер

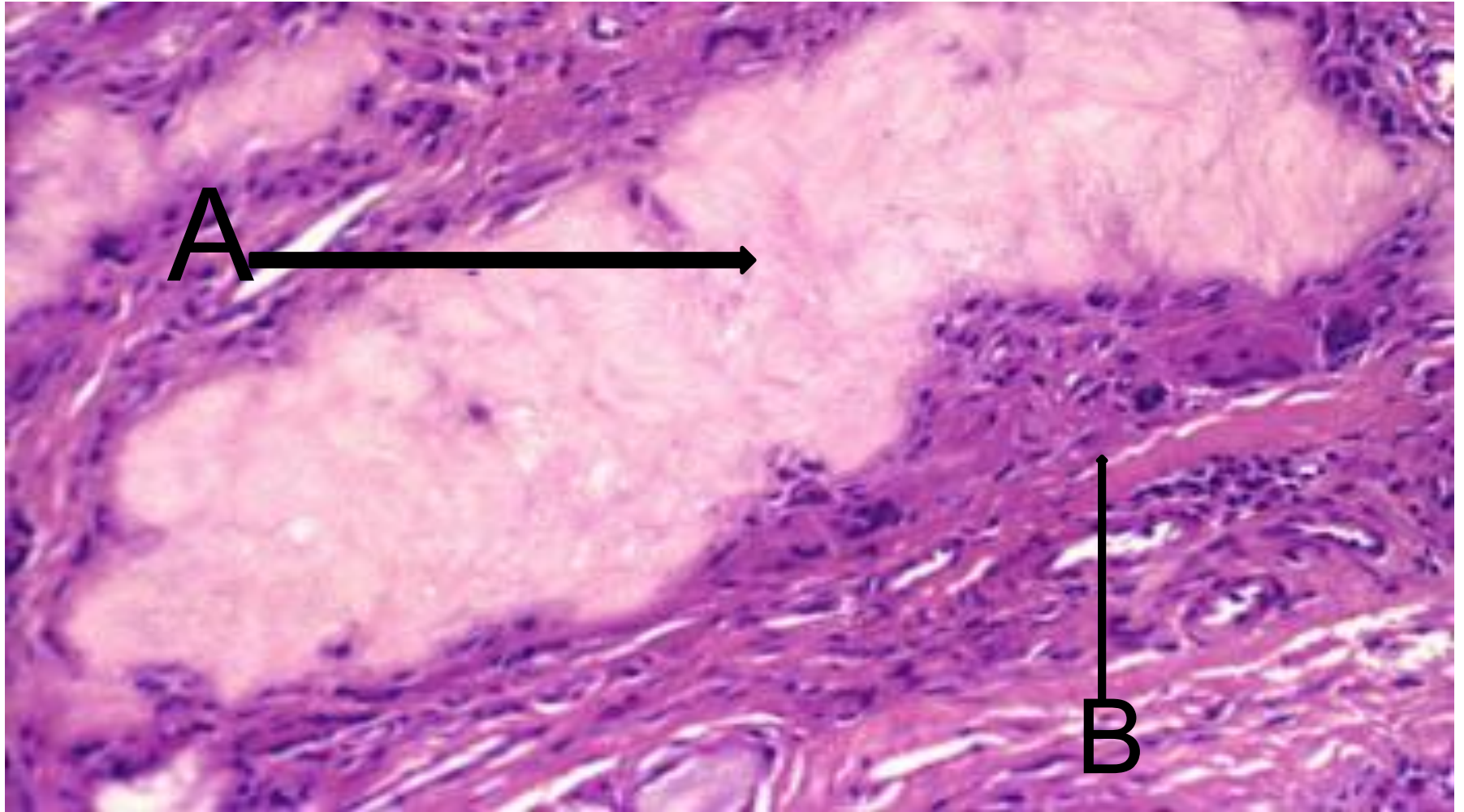


А-фибринозды
гистиоциттер

некрроз;

В-эпителиоидты

Подарга кезіндегі тофус



A- зәр қышқылы тұздарының кристалдары
B-гранулематозды қабыну