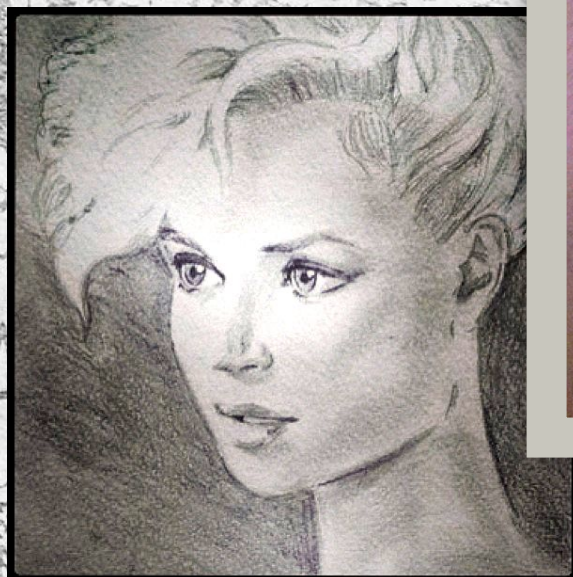
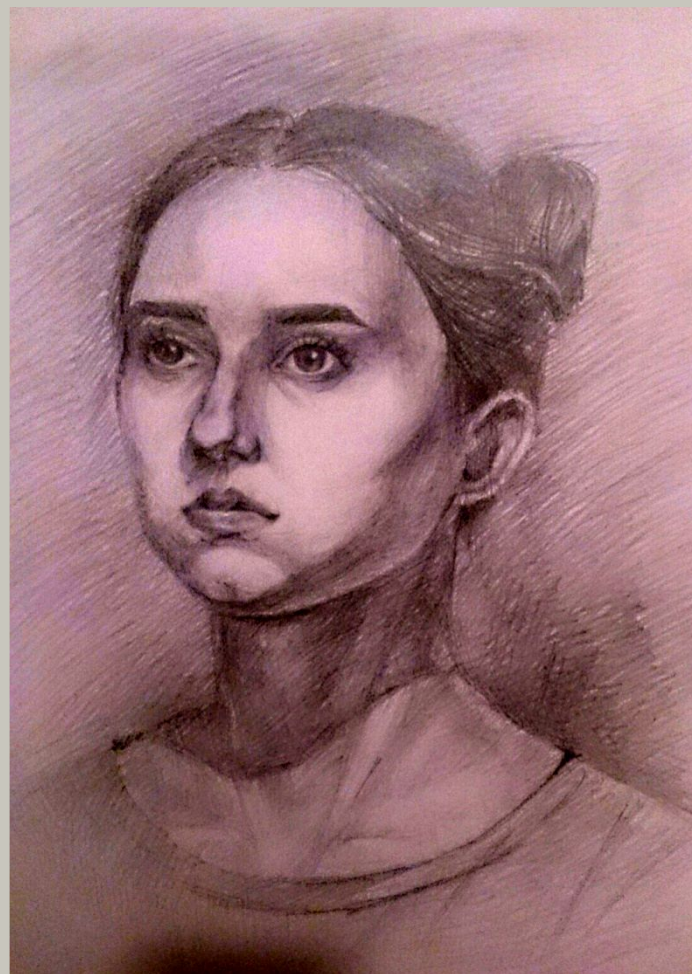
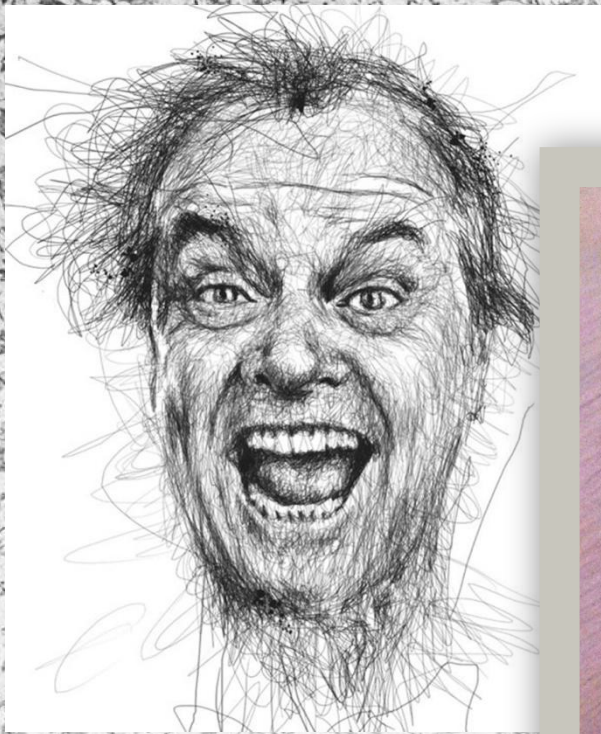




**Конструкция
ГОЛОВЫ
человека и её
основные
пропорции**

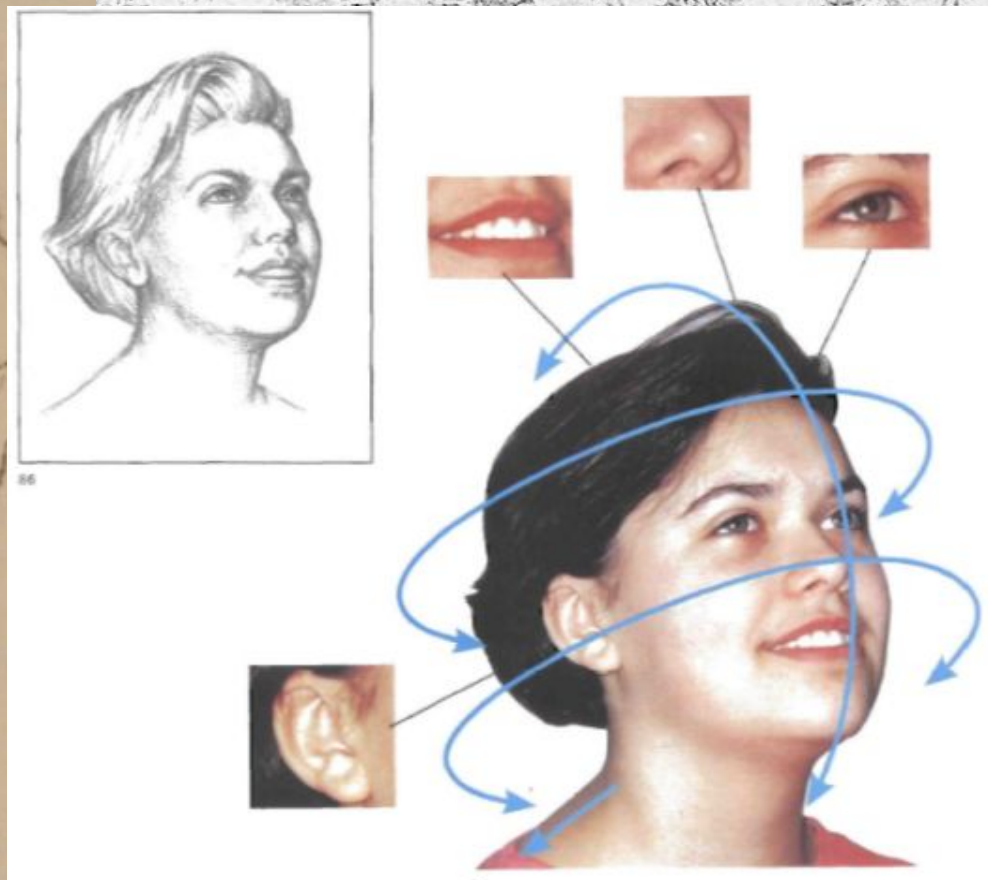
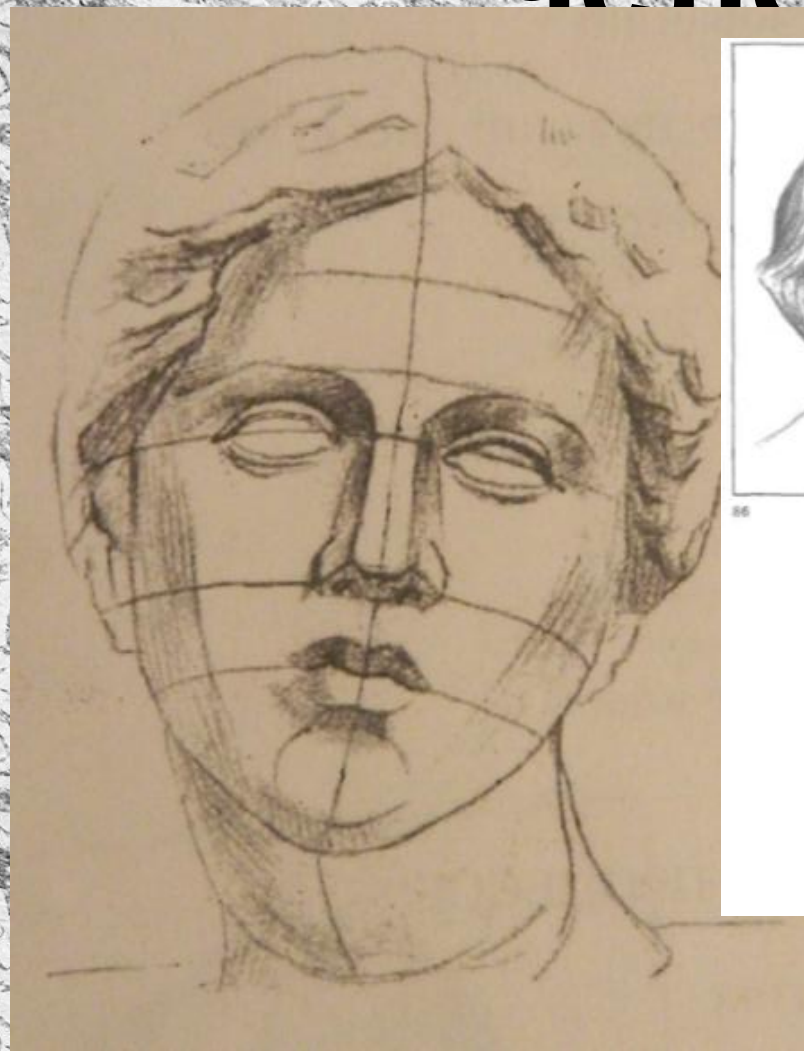
Выполнила
Студентка ГБПОУ КК «КПК»
Сундукова Дарья
Дмитриевна

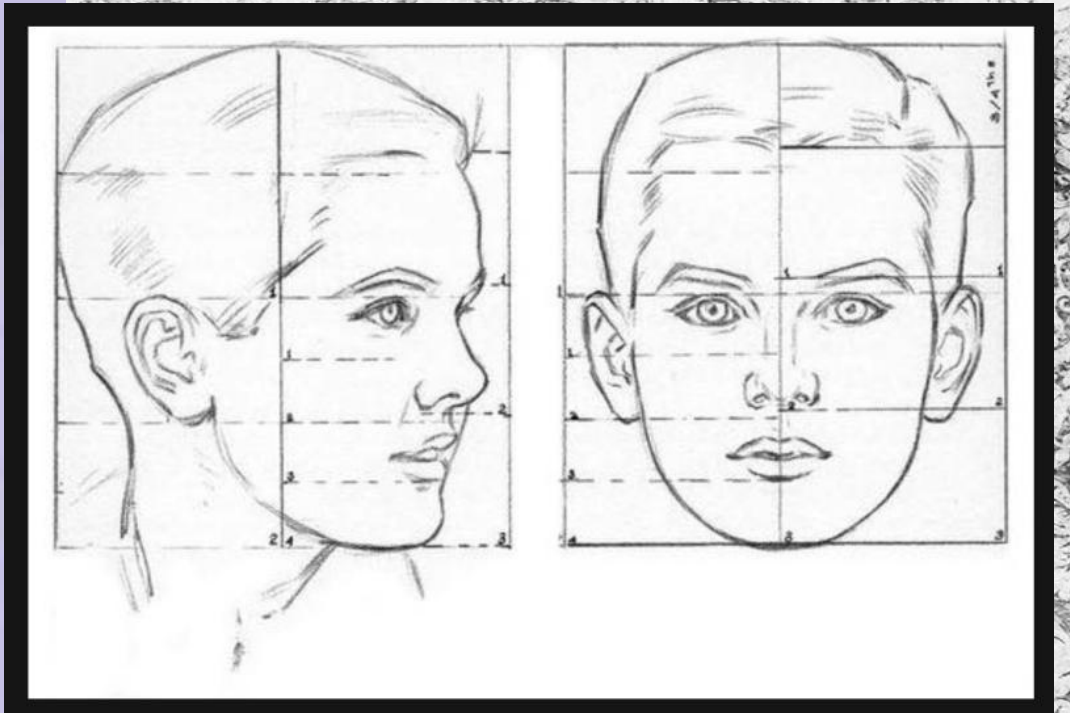
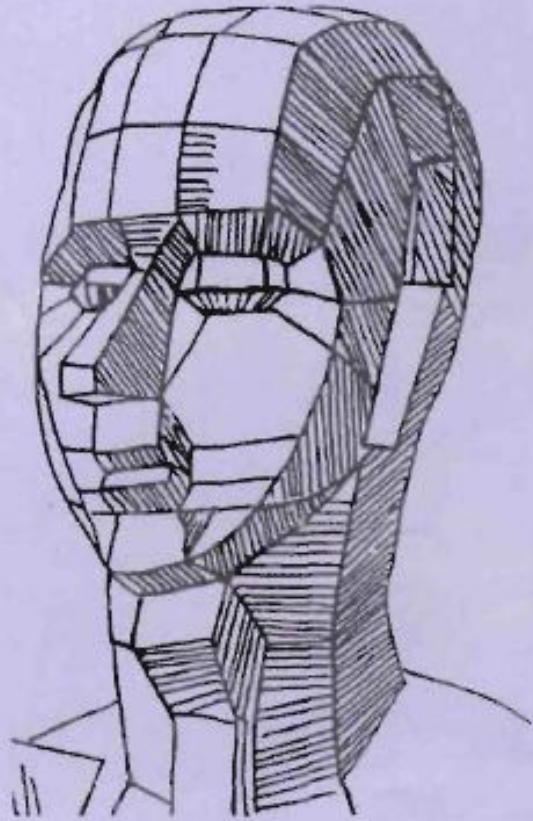
Портрет



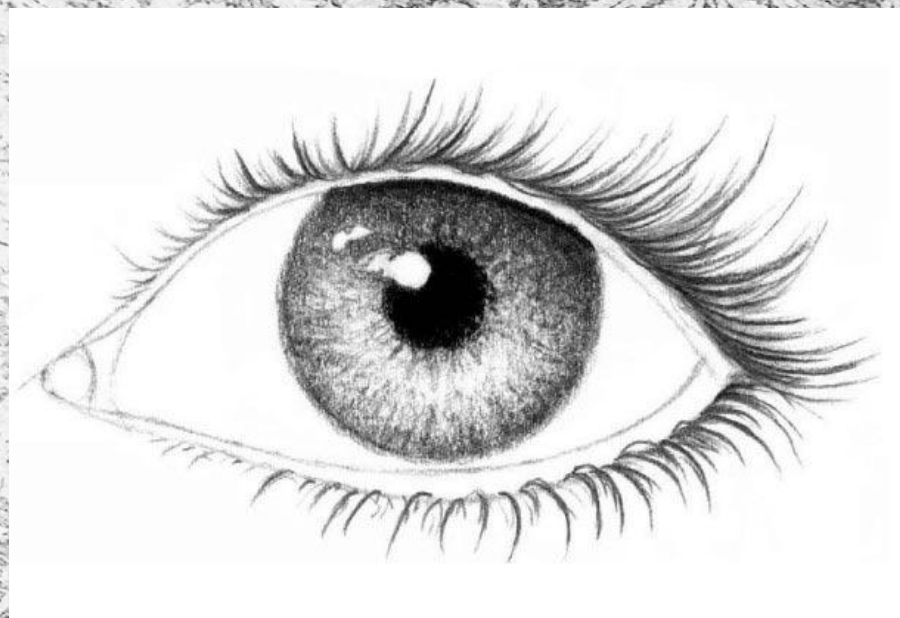
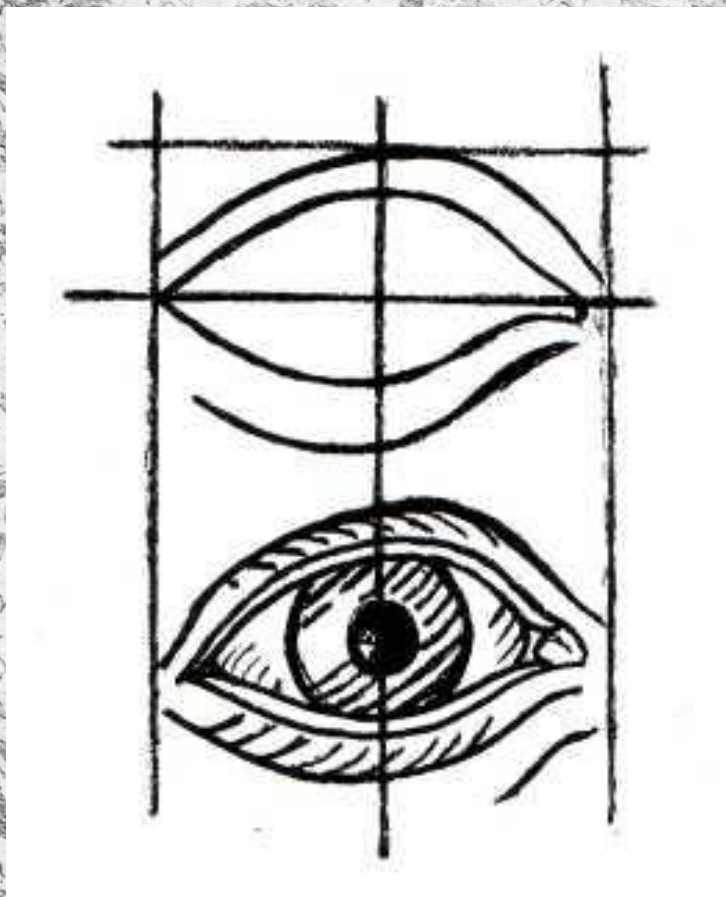
Сундукова Д.
«Портрет
Розы»

Пропорции головы человека

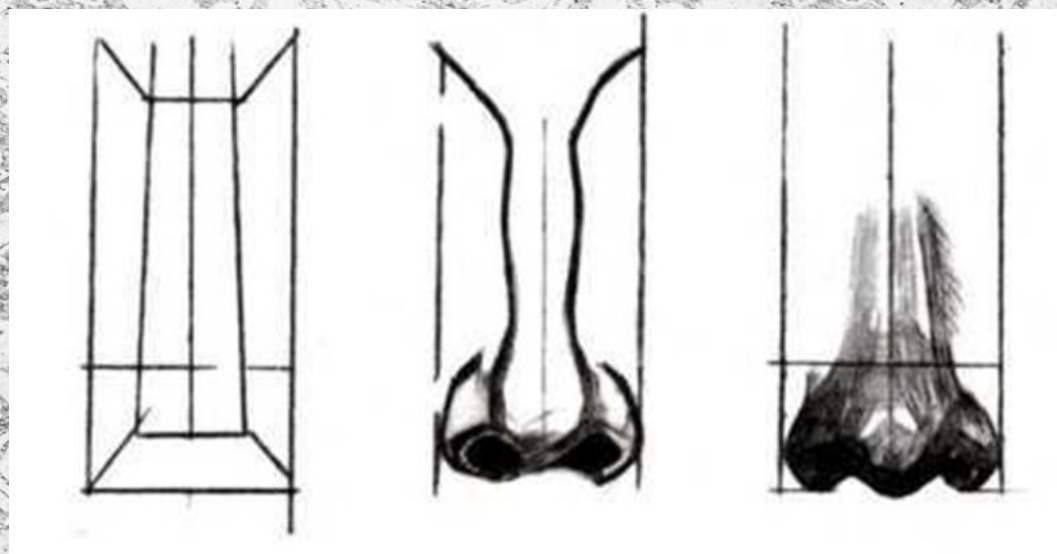
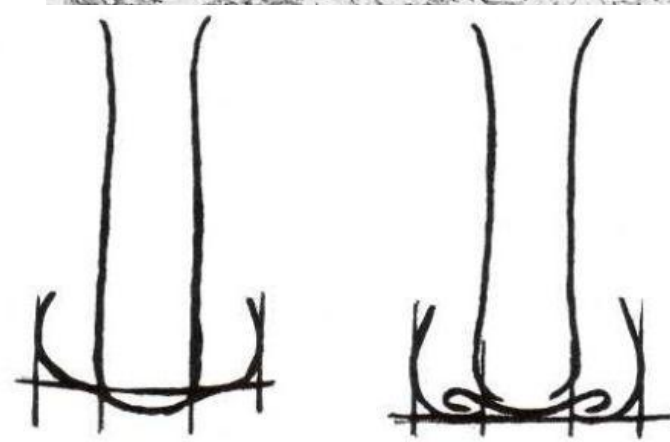
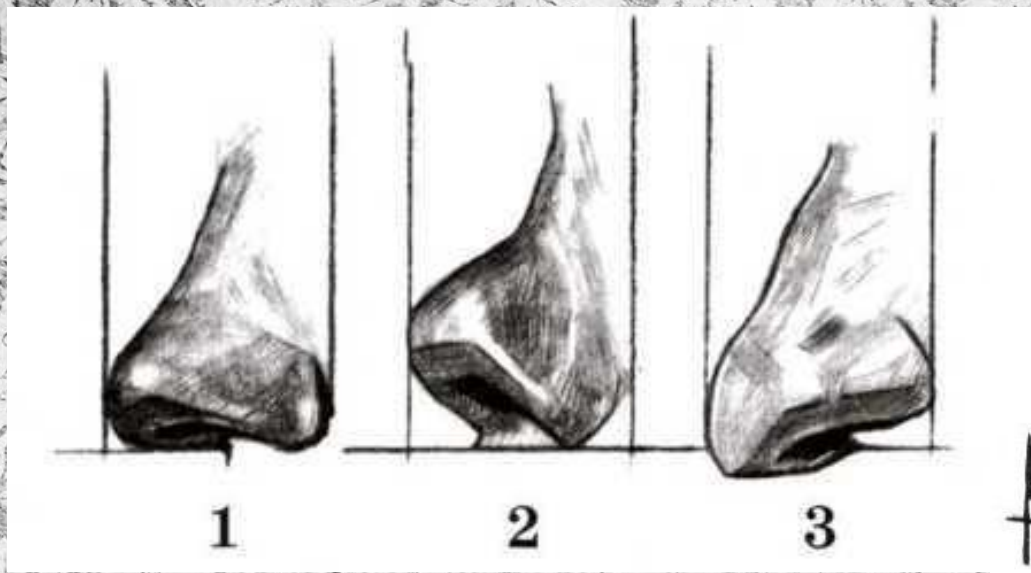




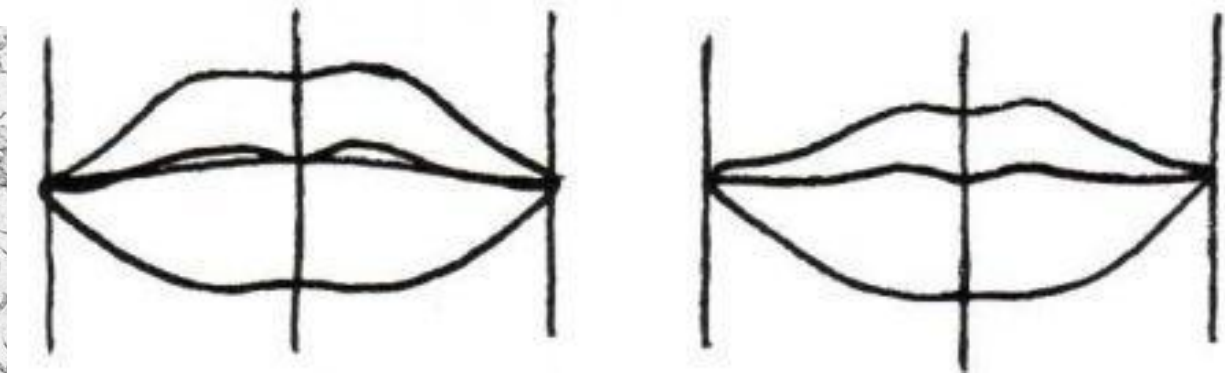
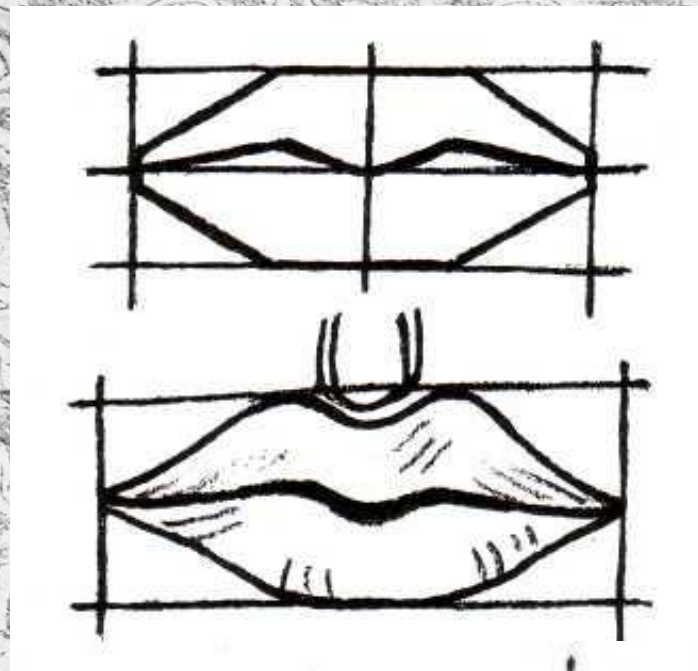
Как нарисовать глаза



Рисуем нос



Рисуем губы



Рисуем уши

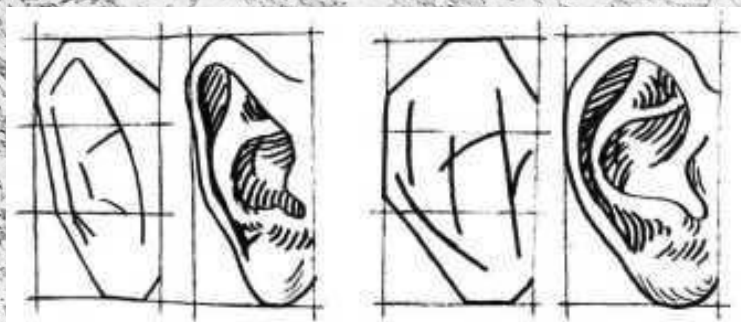
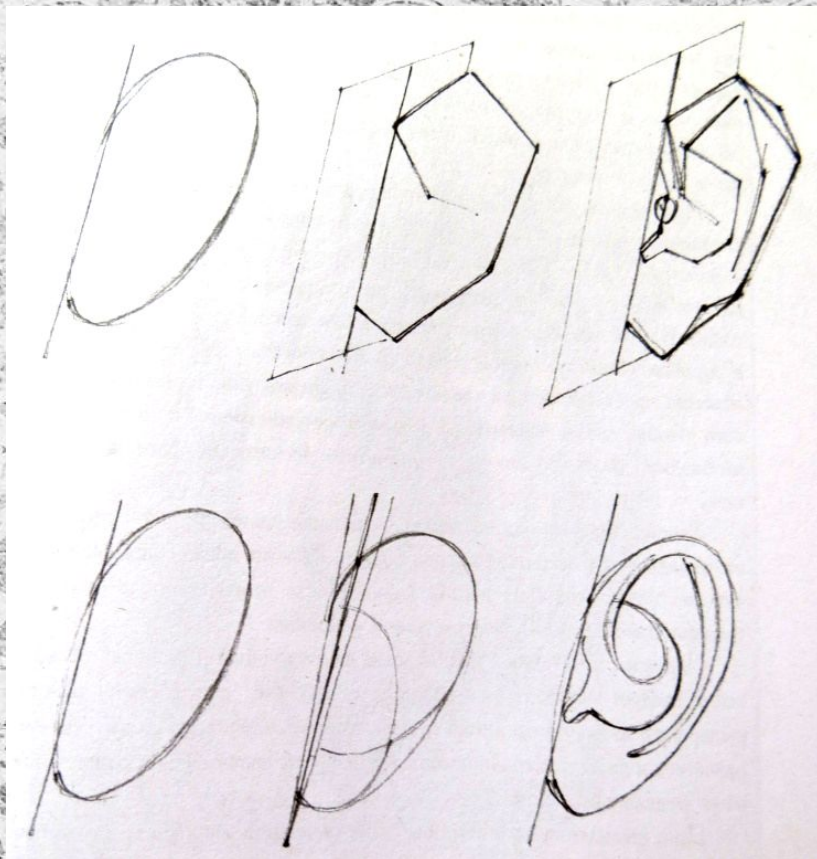
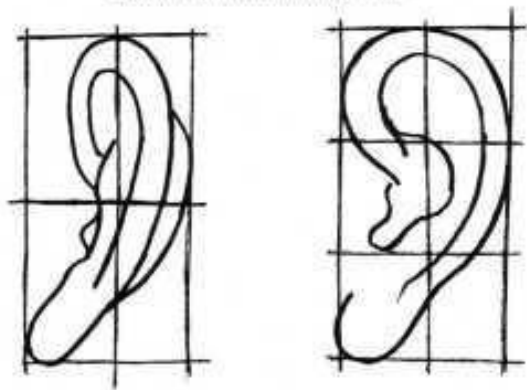


Схема рисования ушей



Рисуем волосы

Женские причёски



Мужские причёски



Практическая работа



A decorative frame composed of several flowing ribbons and intricate floral and scrollwork patterns. The ribbons are arranged in a roughly rectangular shape, with some overlapping and others trailing off. The floral motifs include roses and leafy branches, interspersed with elegant scrollwork. The entire design is rendered in a classic, engraved style with fine lines and cross-hatching for shading.

Спасибо за внимание!