

Альбрехт
Дюрер
(1471-1528)





1454. P. Z. - NURNBERG

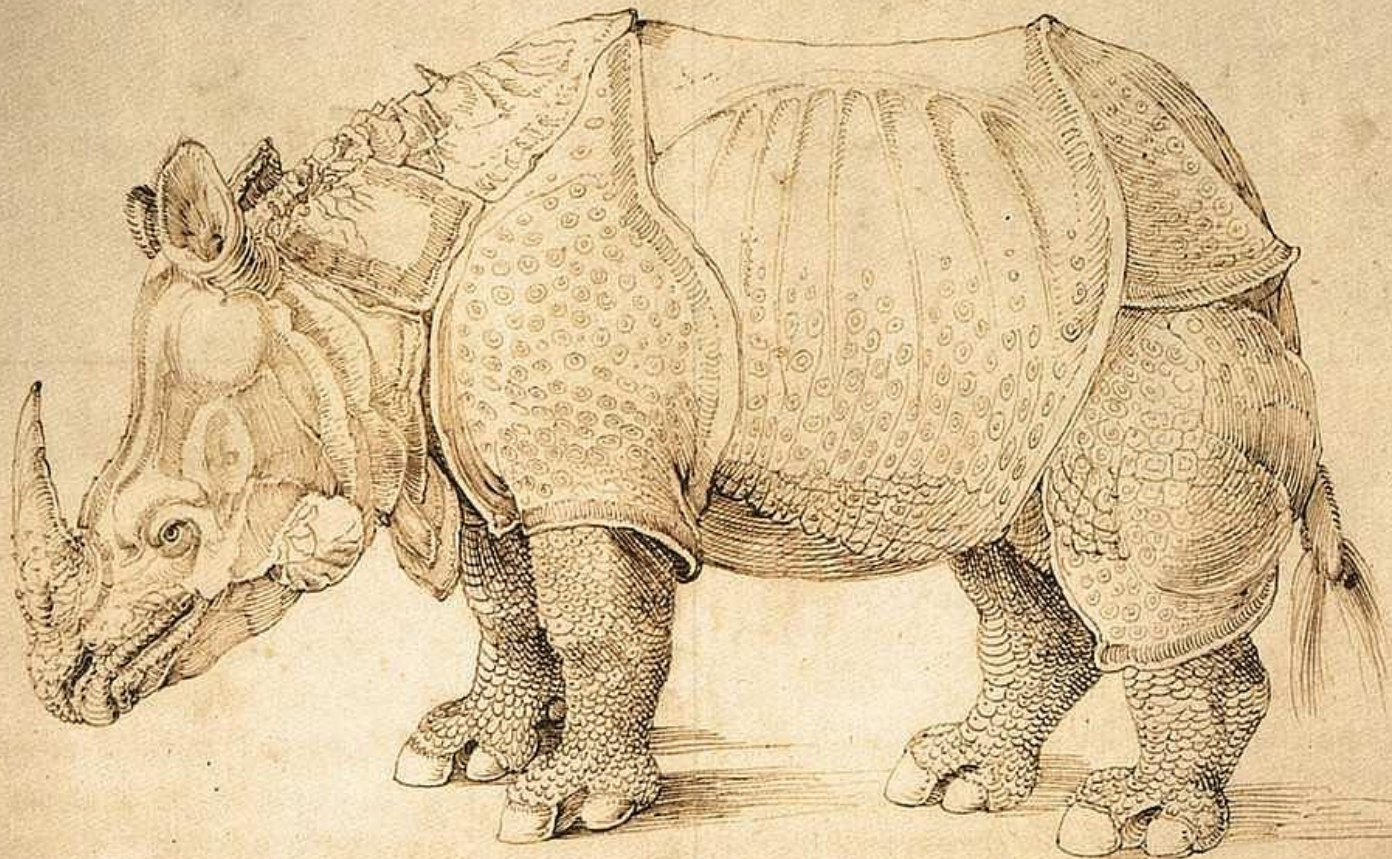


Портрет отца
художника.

1497



ad 1895

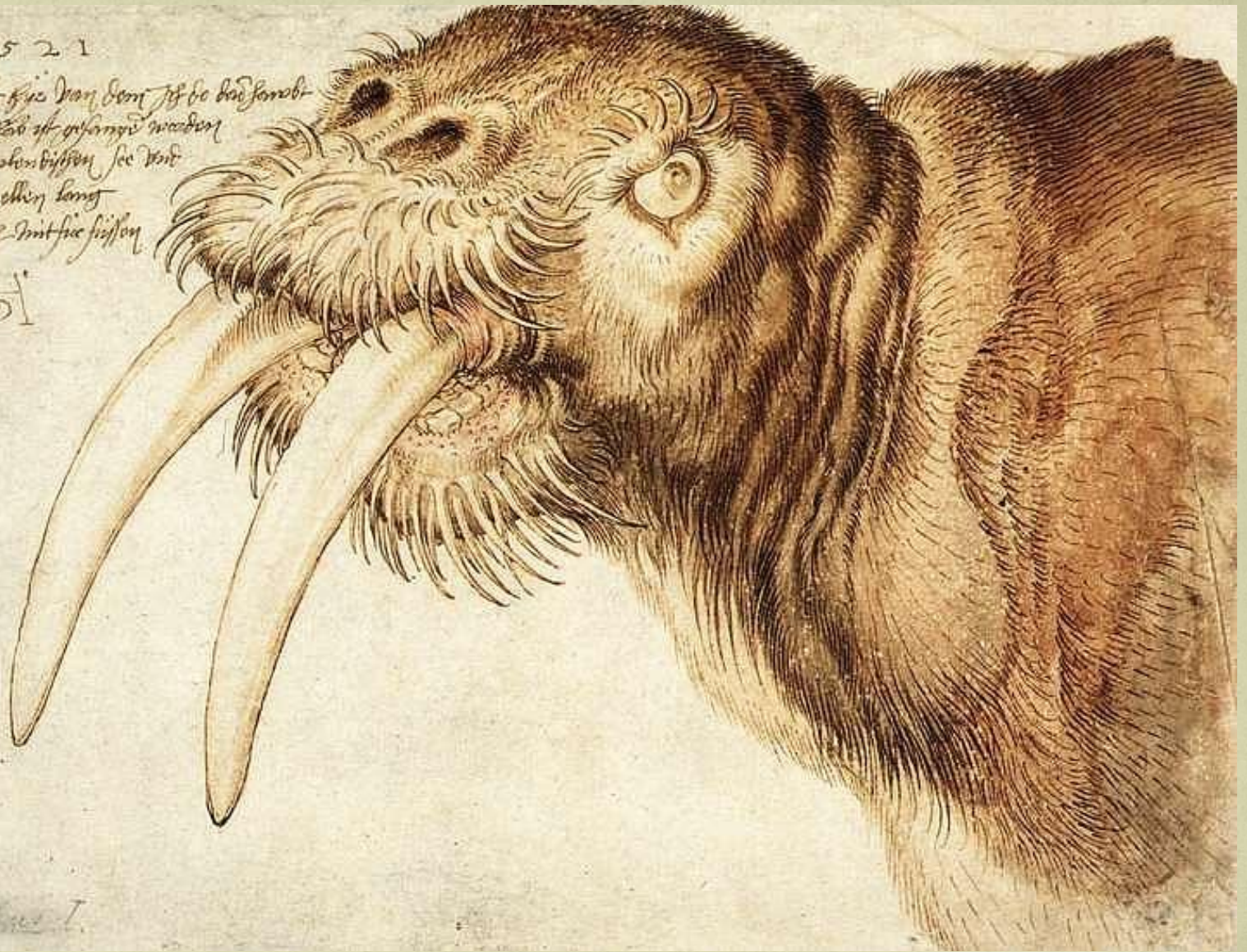


The rhinoceros is a large animal, and its skin is very thick and hard. It is covered in small, circular scales, which are arranged in a regular pattern. The rhinoceros has a single, large horn on its nose, which is made of a substance called keratin. The rhinoceros is a herbivore, and it feeds on grass and other plants. It is found in the savannas of Africa and Asia. The rhinoceros is a very powerful animal, and it can charge at its enemies. It is also a very fast runner. The rhinoceros is a very important animal in its ecosystem, and it plays a key role in the food chain. The rhinoceros is a very interesting animal, and it is one of the most fascinating creatures on Earth.

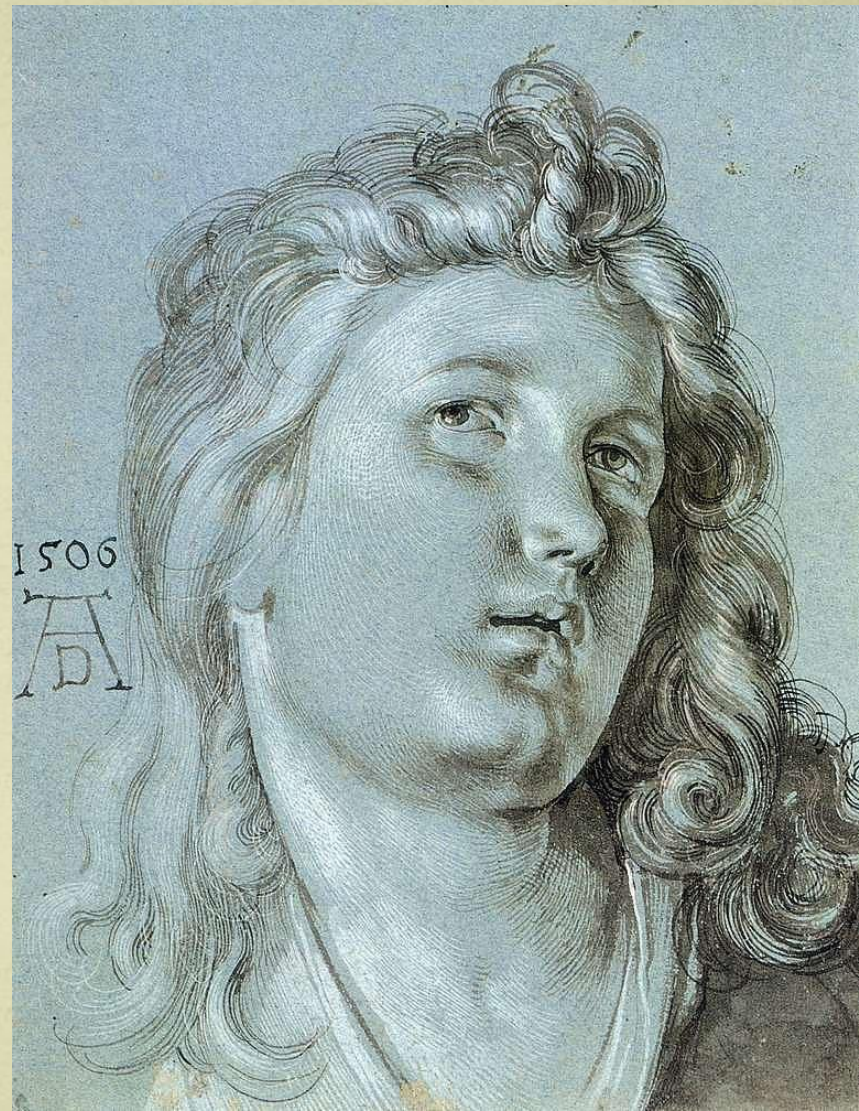
167 1521

Das bejst die von dem Jhr die bei Janobi
Contestet so ist gefangen worden
In die Niederlanden see von
mae XII ellen lang
kantenijß mit sic süssen

AD



De walrus I.



87.

Sancta Clara



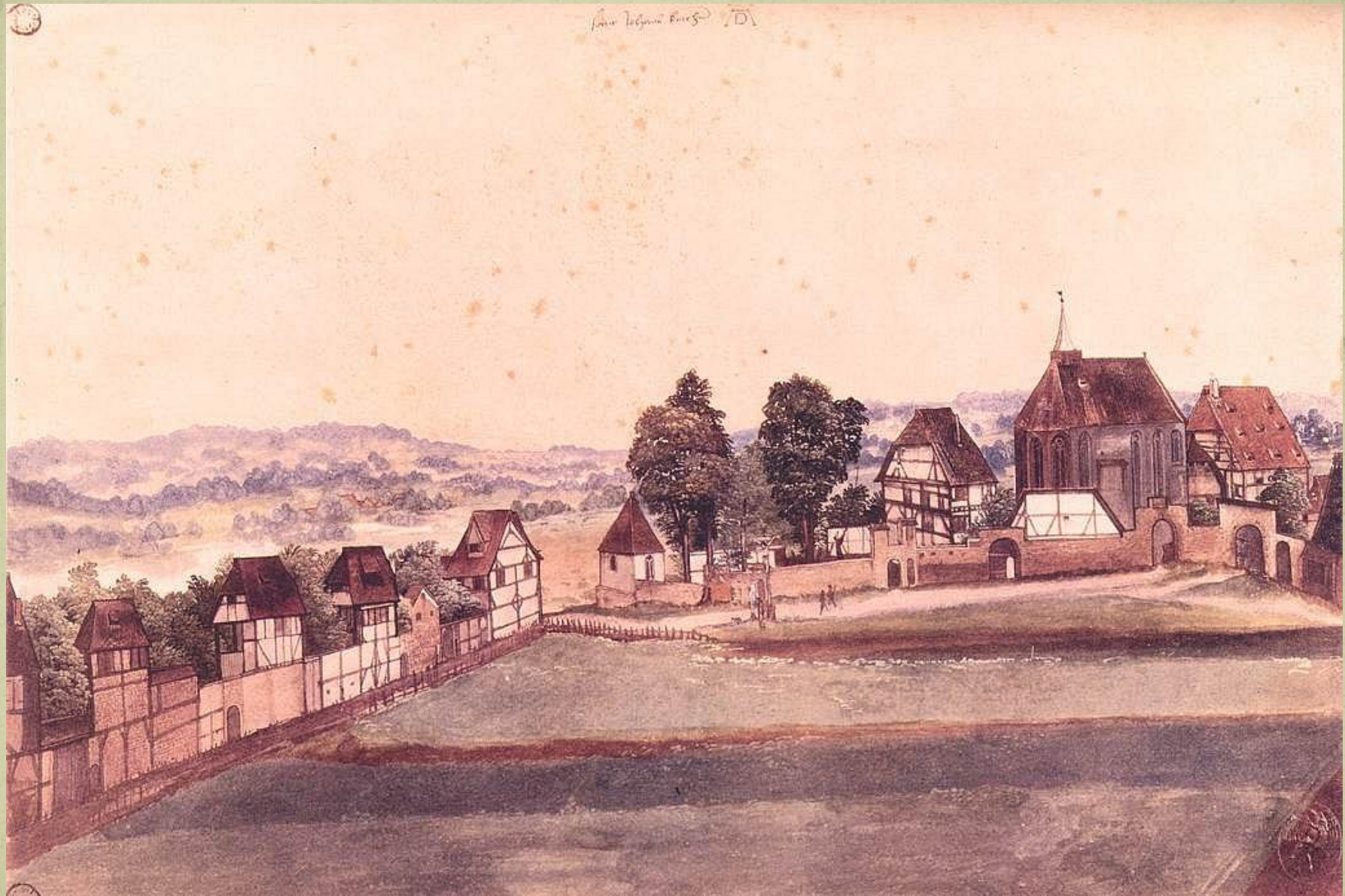
Jan 10





1891

John Wapman 1875





Wine Gaze

AT



Wappenstein 1511





1512
A



1512

A



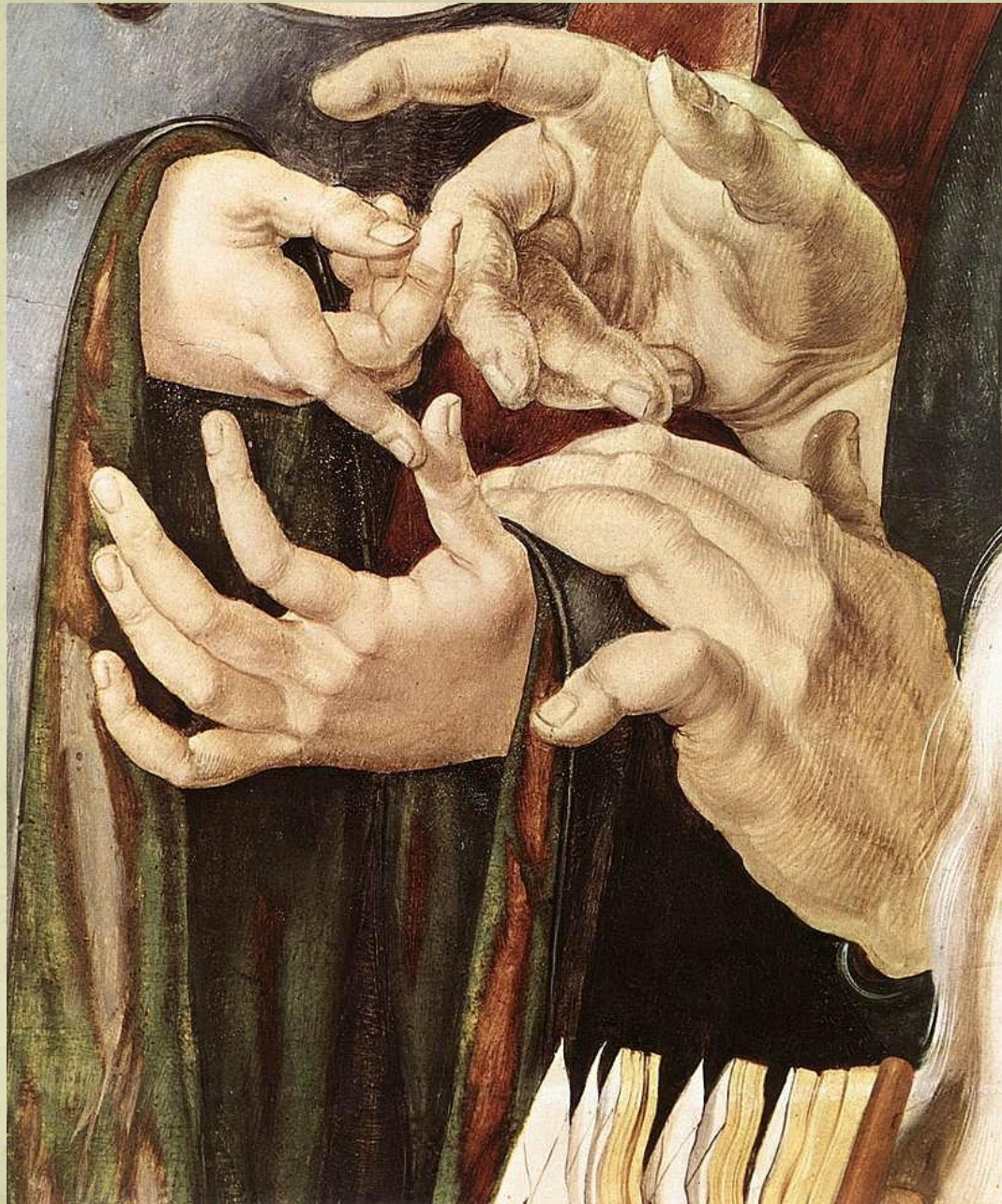


1502













Надпись в правом верхнем углу: "Я нарисовал это, стоя перед зеркалом, так я выглядел в 1484 г, когда был ребенком"





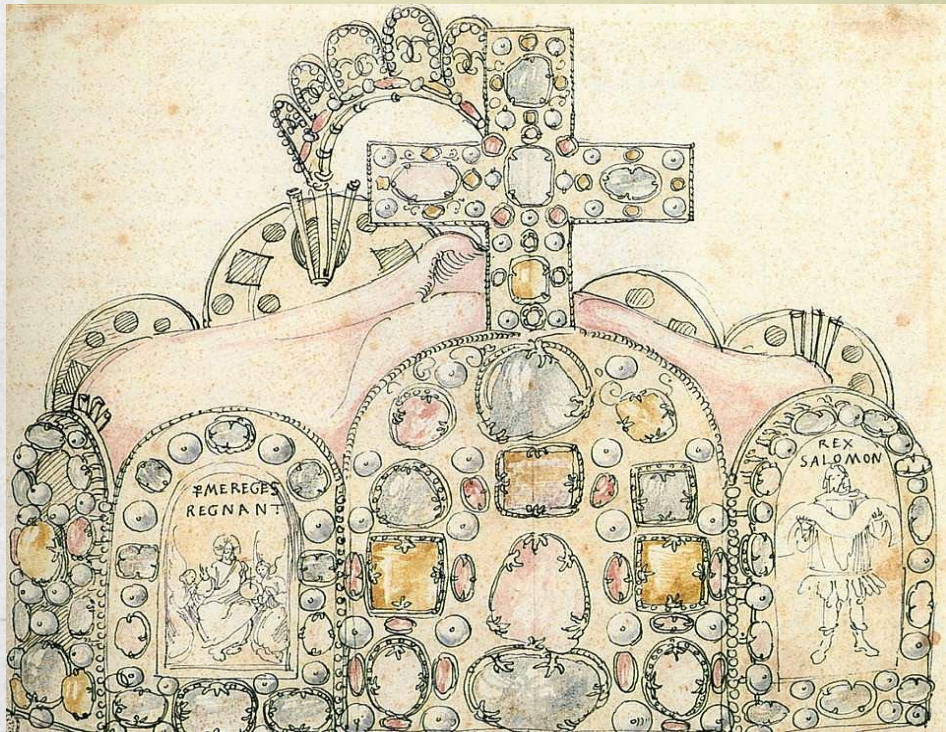
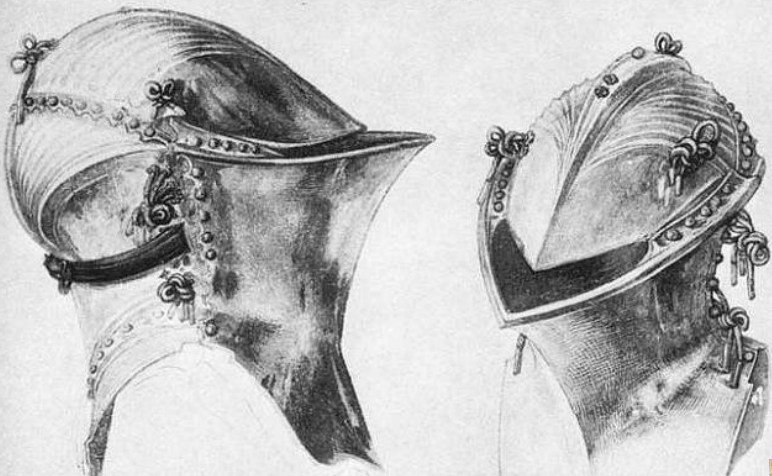




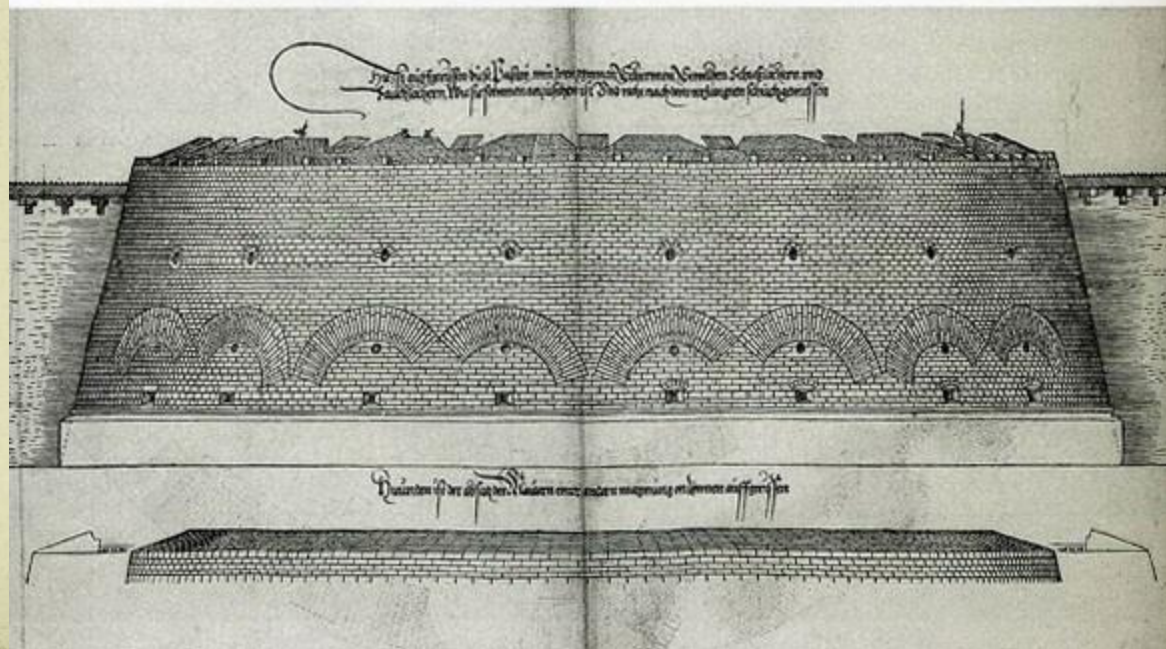
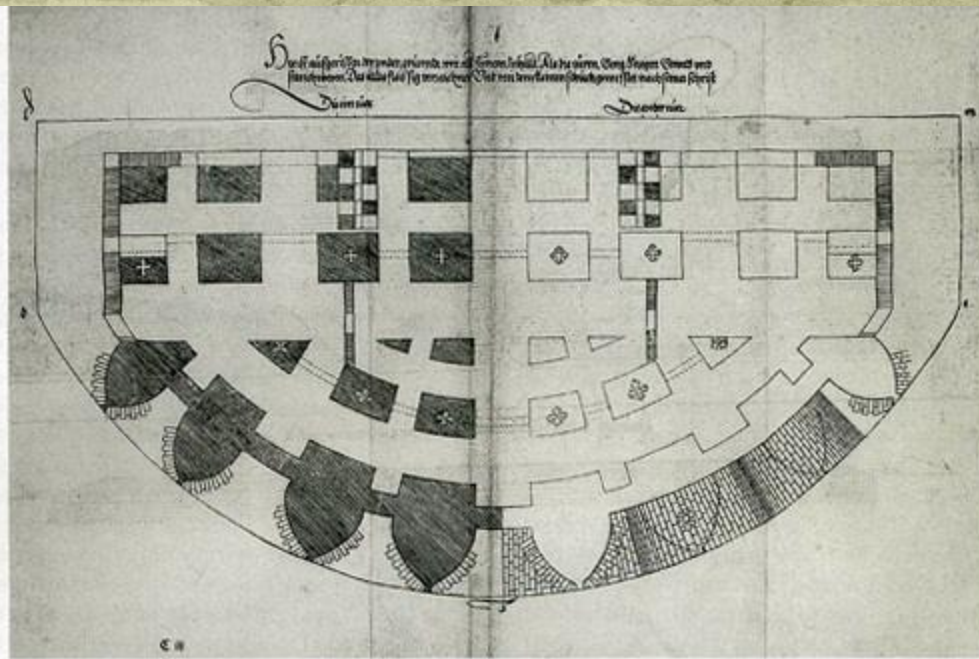
1526



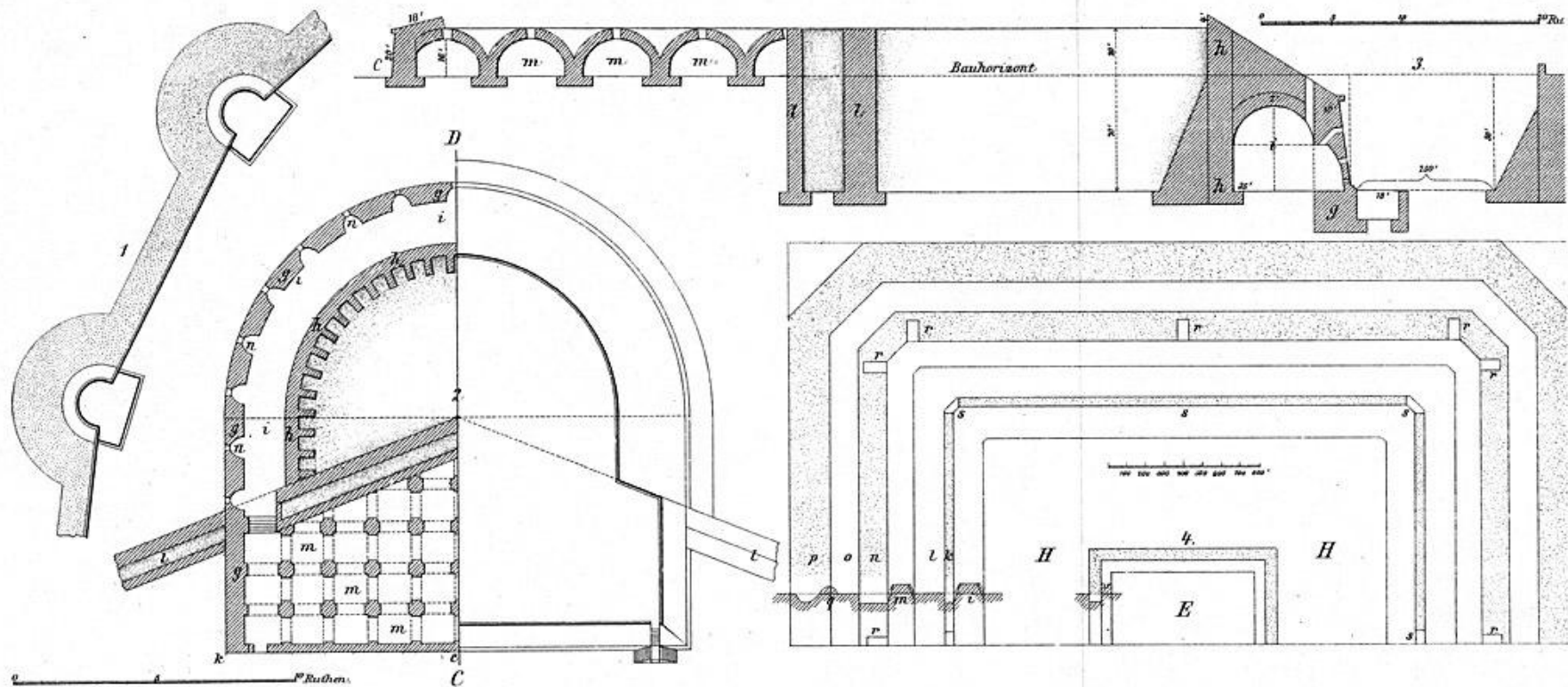
1511 101

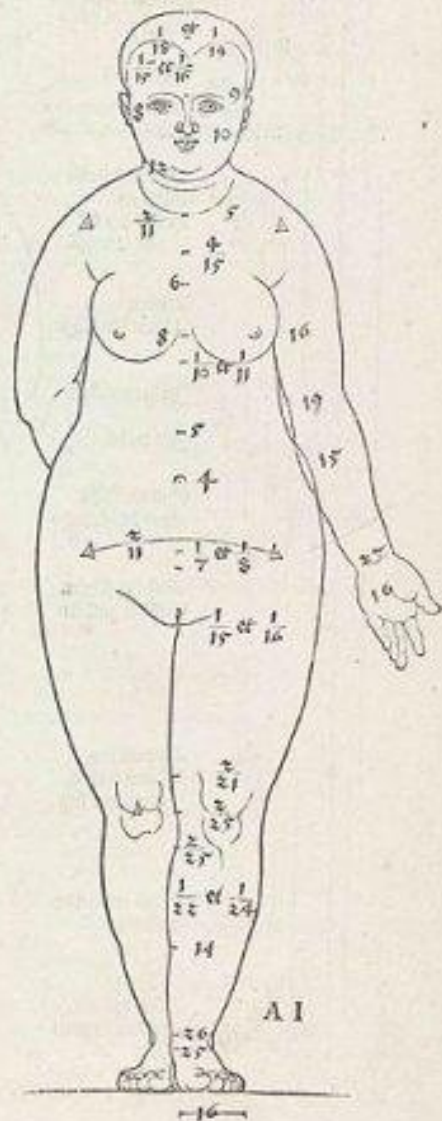
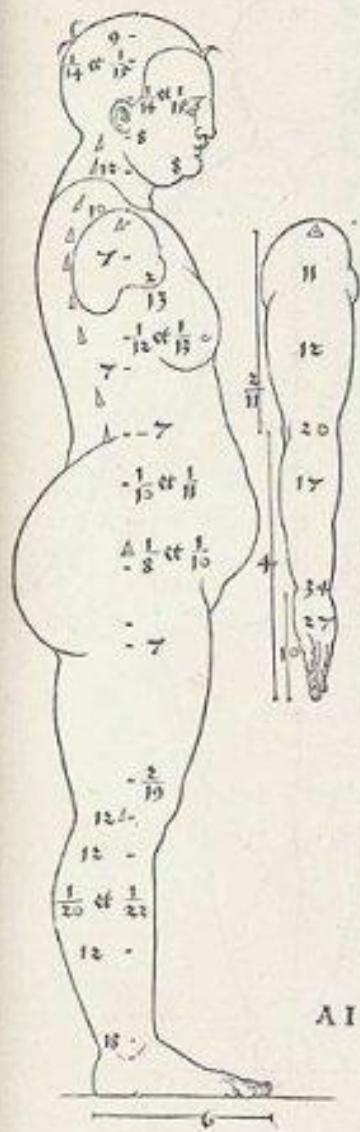






Deutsche Befestigungskunst des 16. Jahrhdts. Dürer. 1527.

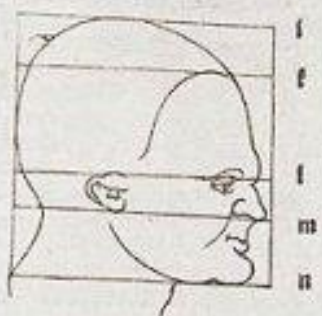




In diesem angesichte ist allein
die lin. l. vbersich gemackt.



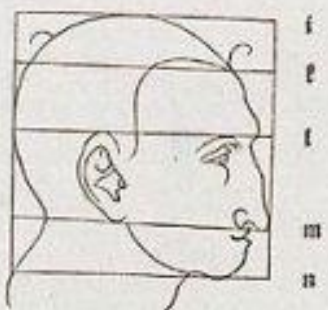
In diesem angesichte ist allein
die lin. l. vnder sich gemackt.



In diesem angesichte ist allein
die lin. m. vbersich gemackt



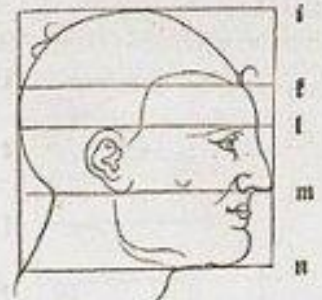
In diesem angesichte ist allein
die lin. m. vnder sich gemackt

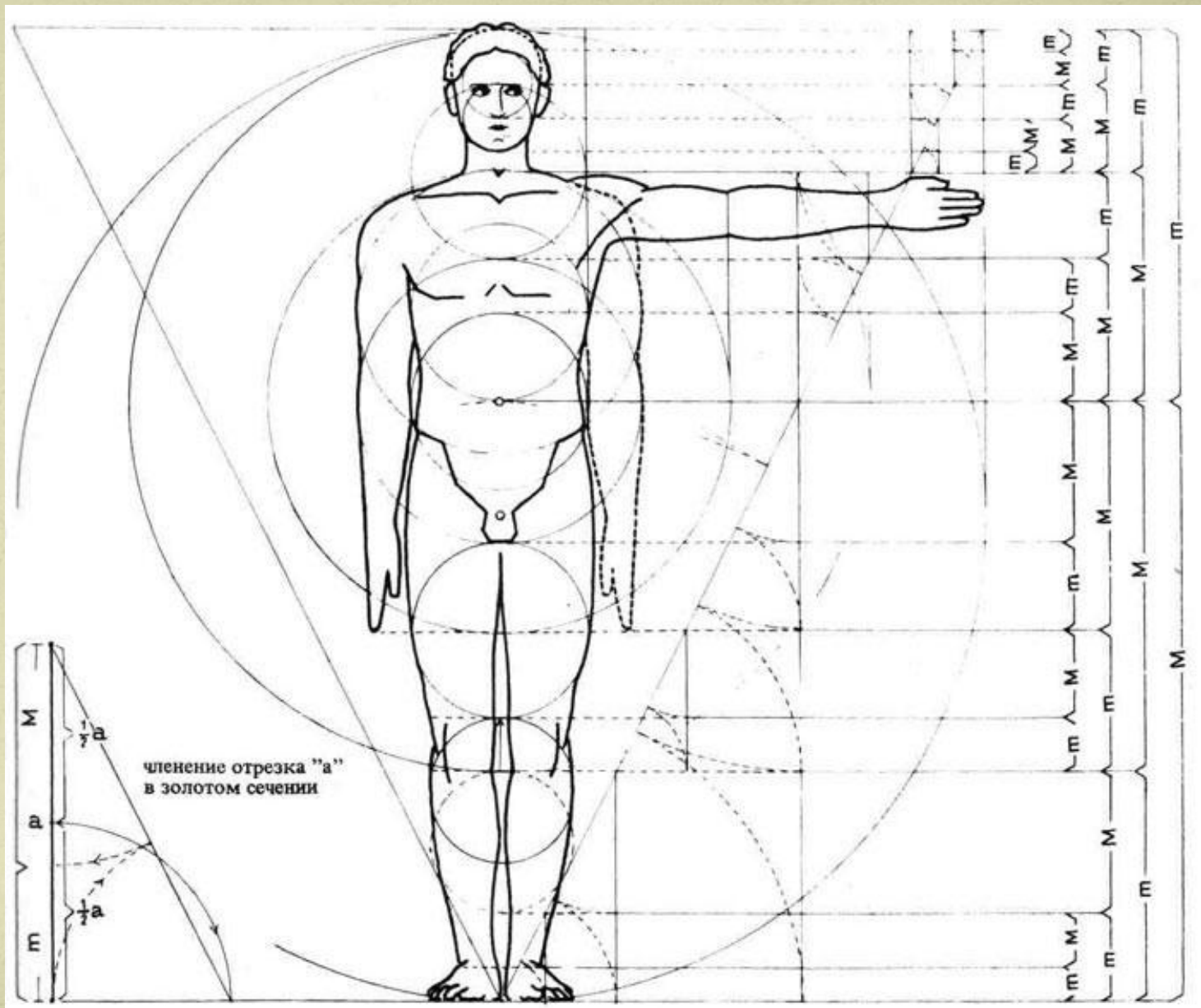


In diesem angesichte ist die lin. f. ober
sich vñ die lin. m. vnder sich gemackt.



In diesem angesichte ist die lin. f. vnder
sich vñ die lin. m. vbersich gemackt





членение отрезка "а"
в золотом сечении



M. AL. DY.
CIVICQVIO ALBERTI DVKERI MORTALE
EVIT. SVS HOC CONFIDIT VR. TVM VLO
EMIGRAVIT. VIIIDVS APRILIS.
M D XXVIII.

PLATE WITH FAMILIAL COAT OF ARMS

1640
PELTON