

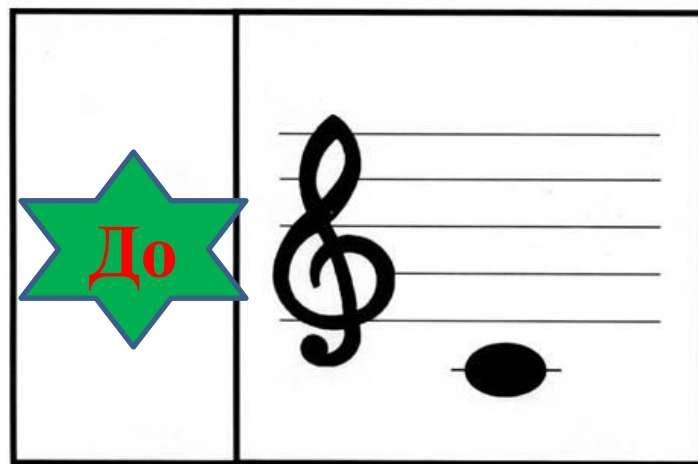
Музыка 1 класс

3 четверть 19 урок

Учитель музыки

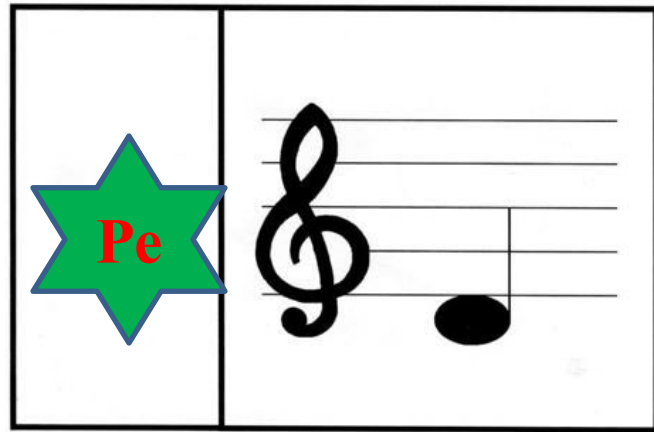
Хабарова Елена Николаевна






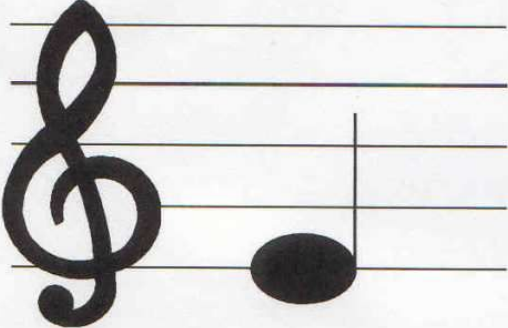
ДО



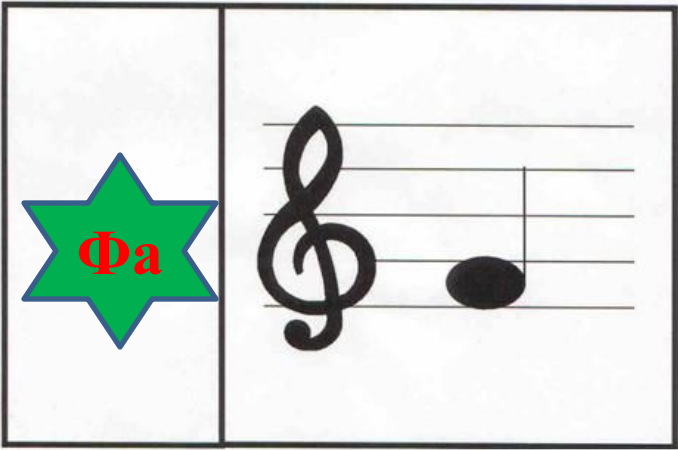


pe



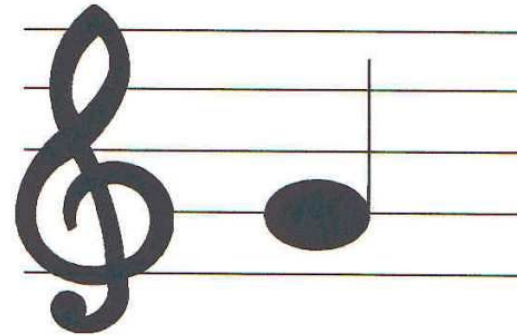
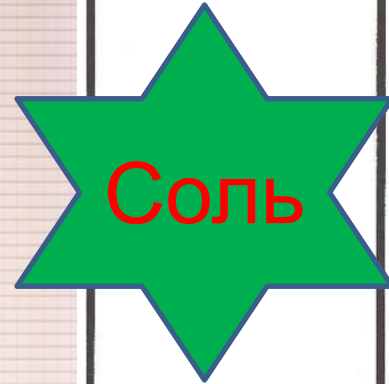
	
--	---

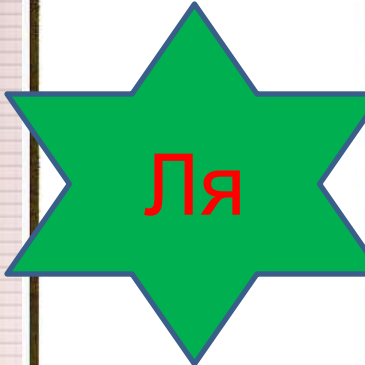
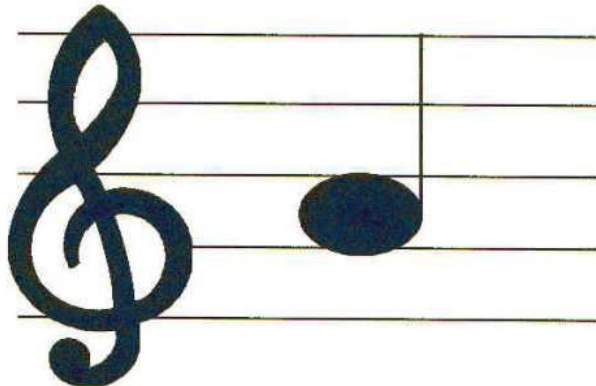




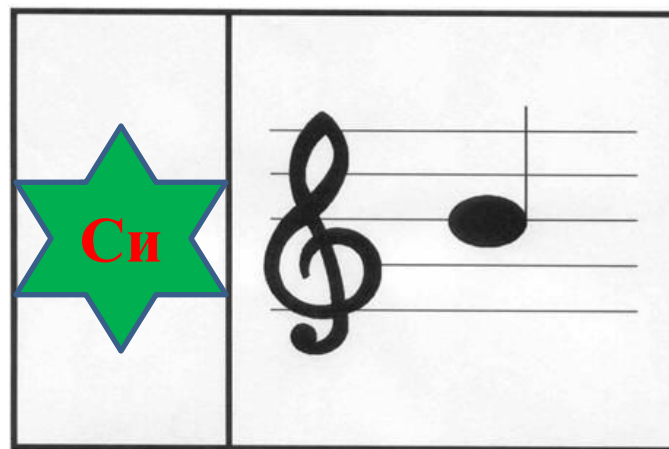
фа





	
--	---





СИ





До Ре Ми Фа Со́ль Ля Си До

The image shows a musical staff with five lines, each a different color (blue, green, pink, yellow, orange). A green treble clef is on the left. Seven pink notes are placed on the lines, corresponding to the Cyrillic labels below: До (D), Ре (E), Ми (F), Фа (G), Со́ль (A), Ля (B), and Си (C). The notes are positioned on the lines from bottom to top: bottom line (Do), first space (Re), second line (Mi), second space (Fa), third line (Sol), third space (La), and fourth line (Si). The final note is on the top line (Do).

