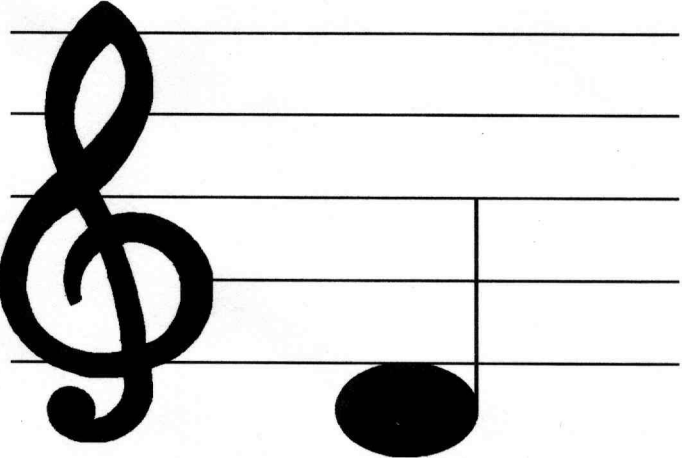
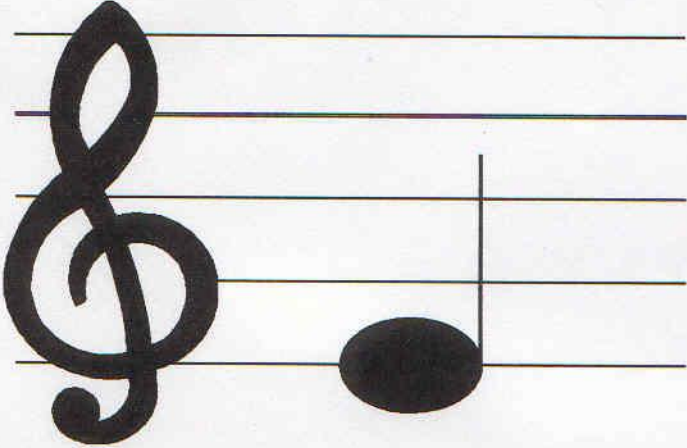


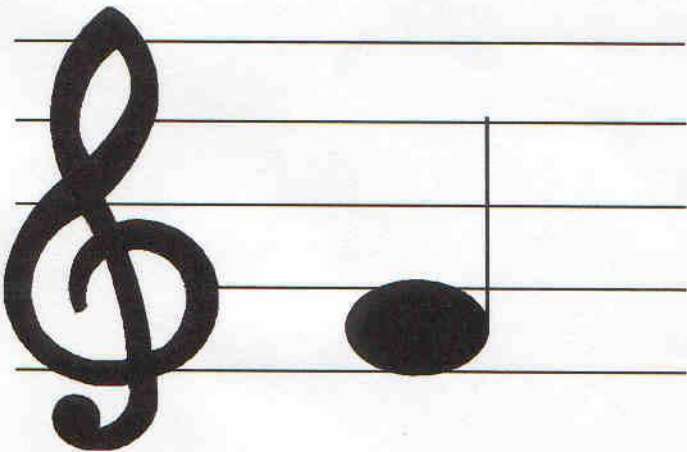
ДО

<p>d</p>	 <p>A musical staff with five horizontal lines. A treble clef is positioned on the left side. A single black note is placed on the second line from the bottom.</p>
----------	---

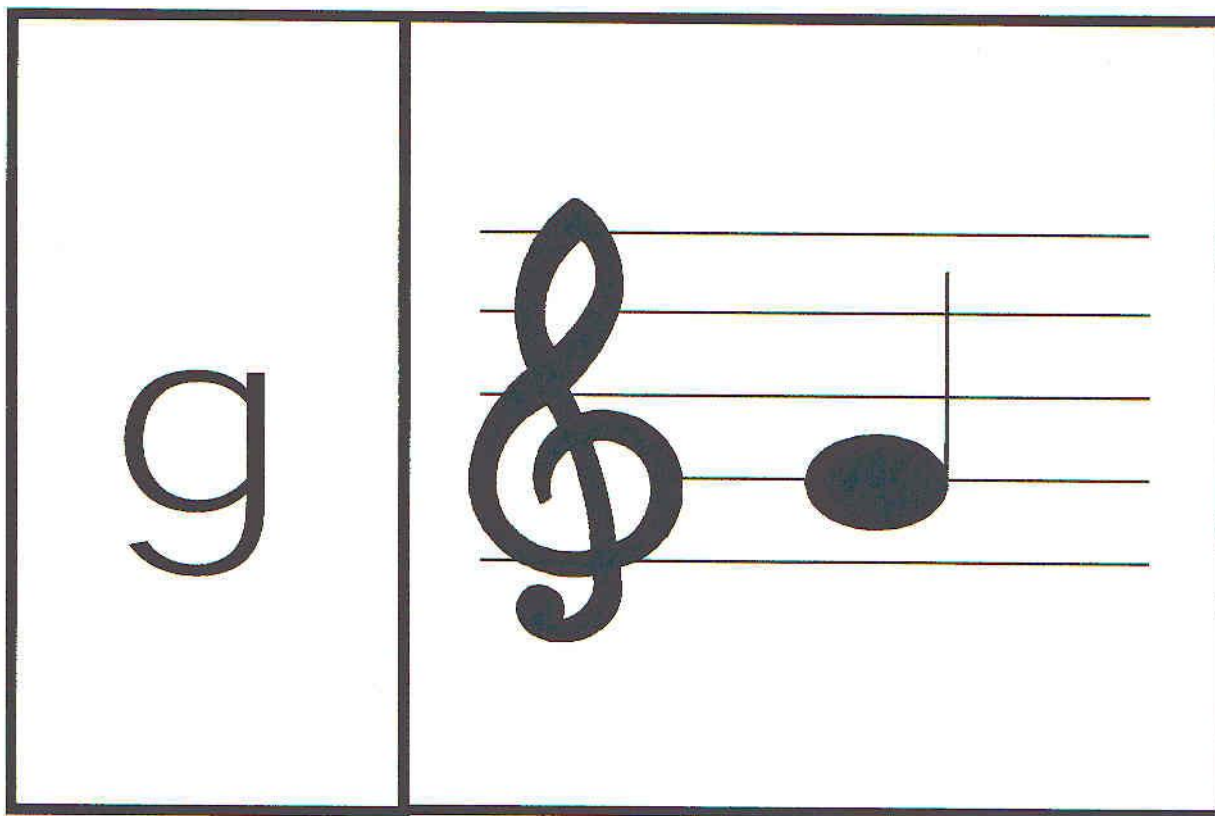
pe

e	 A musical staff with five horizontal lines. On the left side, there is a treble clef. On the right side, there is a single black note with a stem, positioned on the second line from the bottom.
---	--

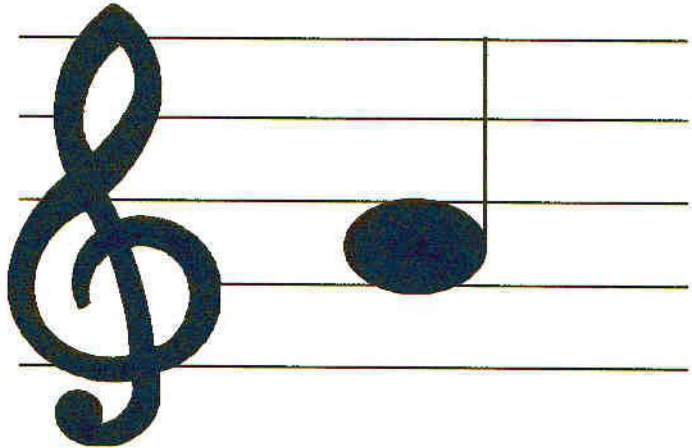
МИ

f	
---	--

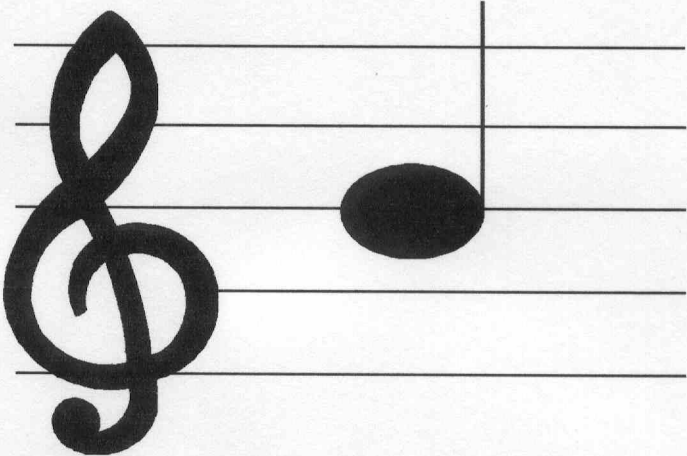
фа



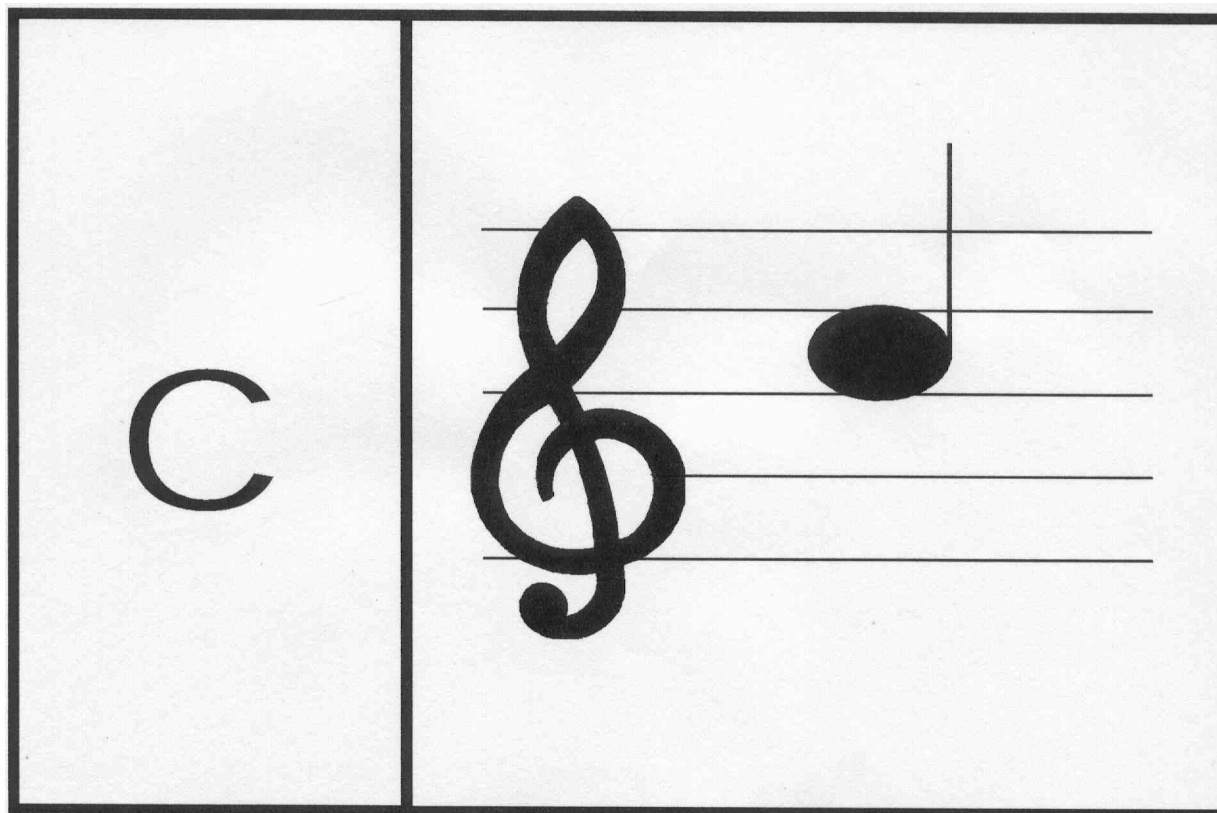
СОЛЬ

а	 A musical staff with five horizontal lines and a treble clef on the left. A single solid black note is positioned on the second line from the bottom.
---	--

ля

<p>b</p>	 <p>A musical staff with five horizontal lines and a treble clef on the left. A single black note is positioned on the second line from the bottom.</p>
----------	---

СИ



ДО