

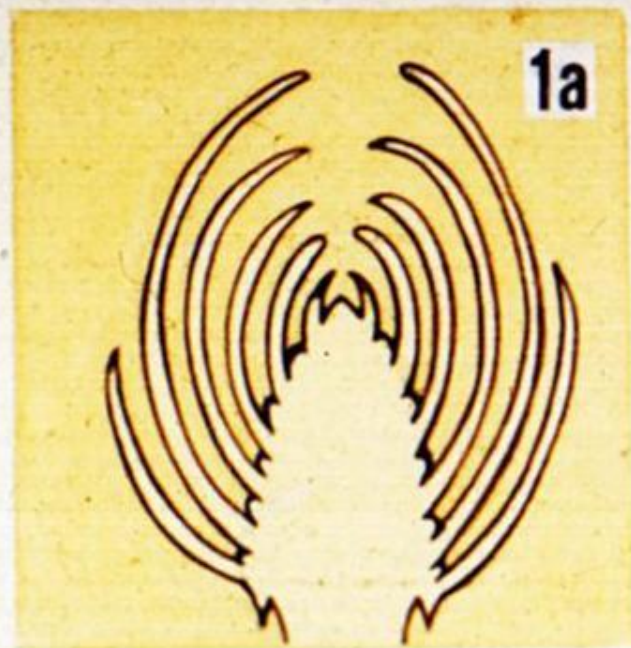
*Внешнее и  
внутреннее  
строение  
стебля.  
Видоизменени  
е побегов*

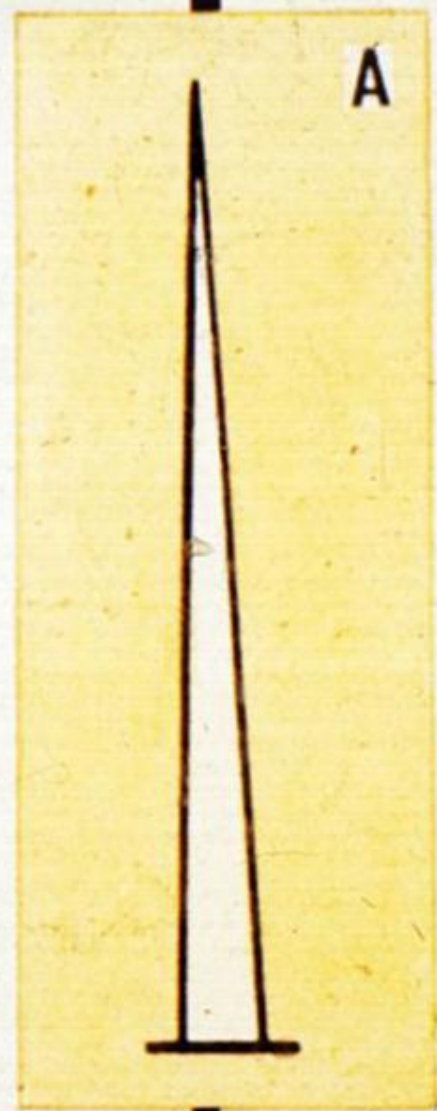
**Конус  
нарастания**

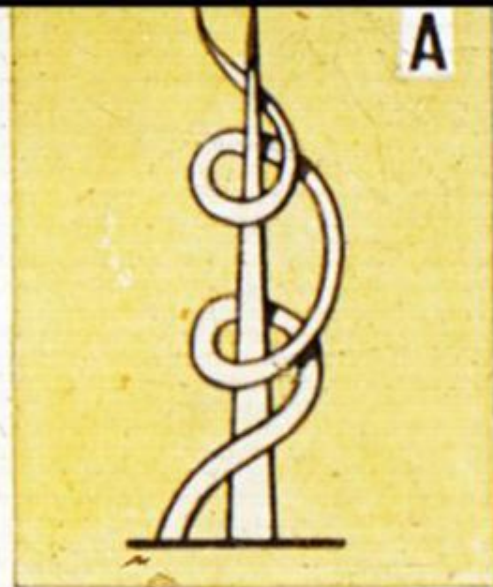
**Зачатки  
листьев**

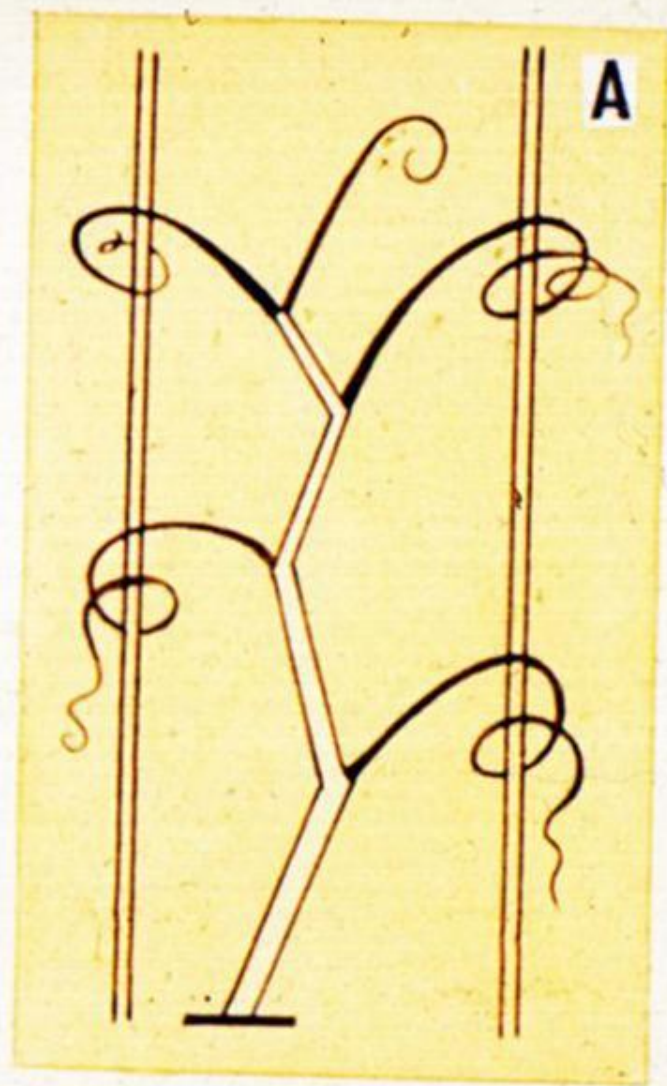
**Зачатки  
пазушны  
почек**

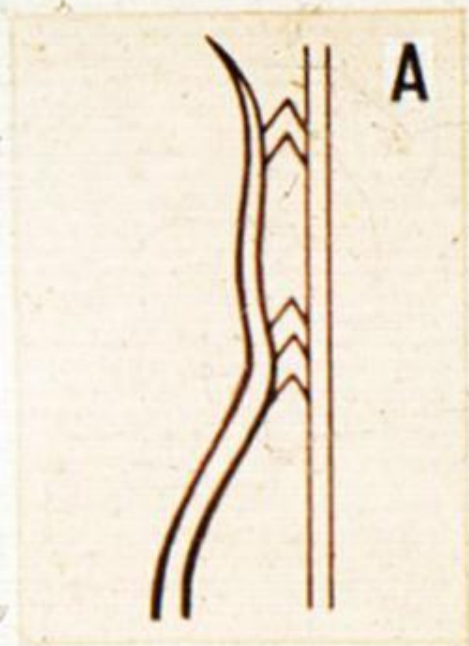


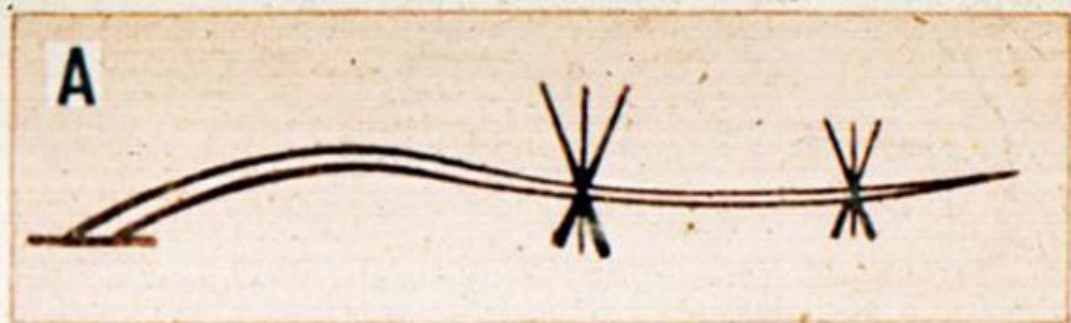




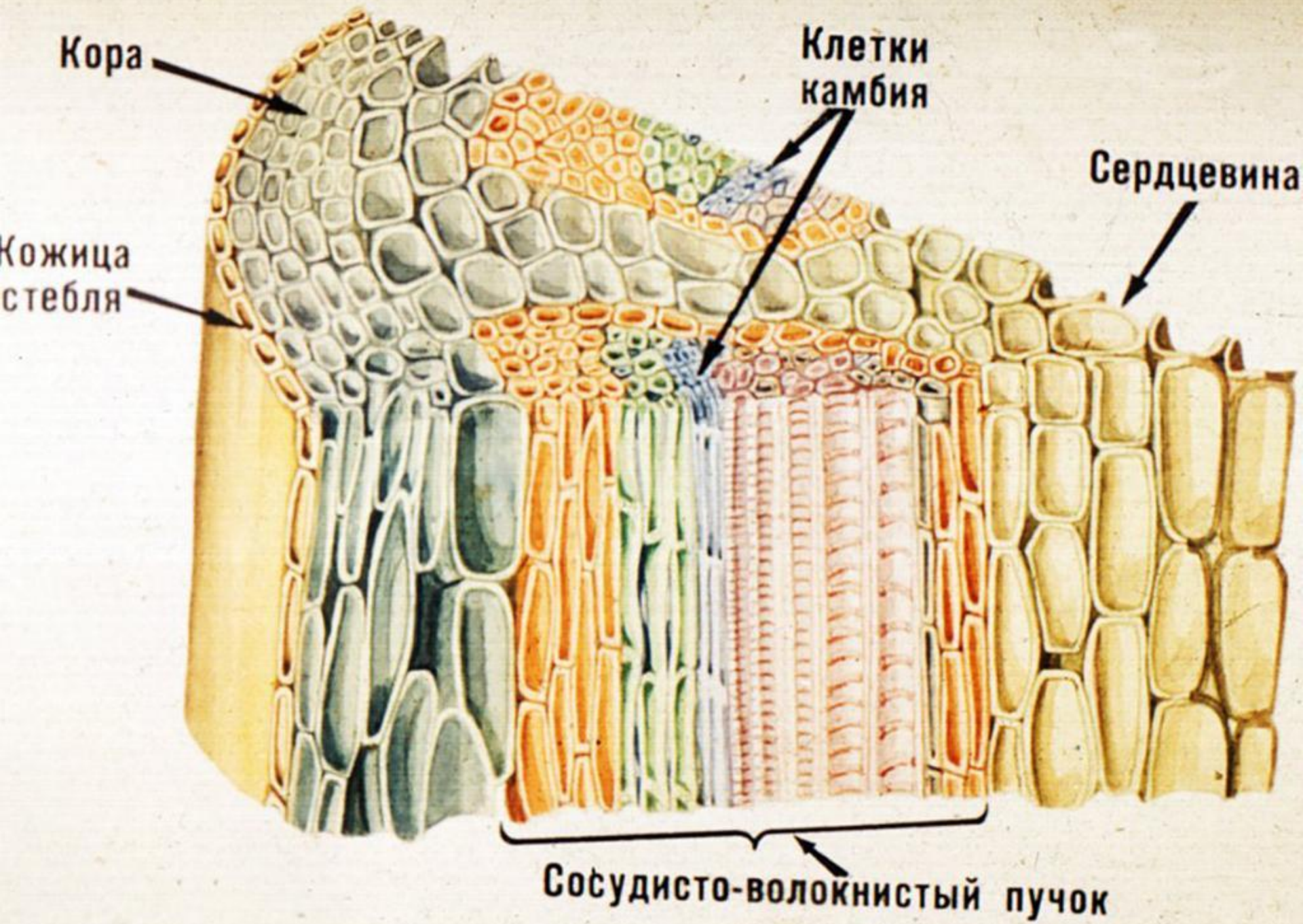












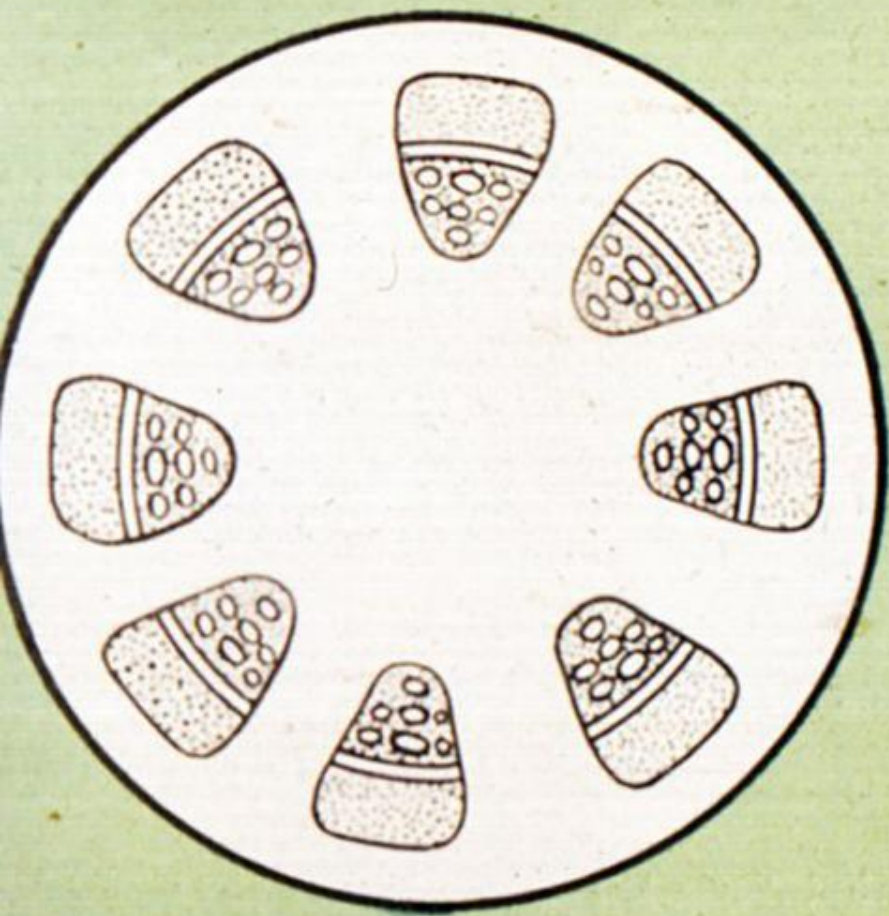
Кора

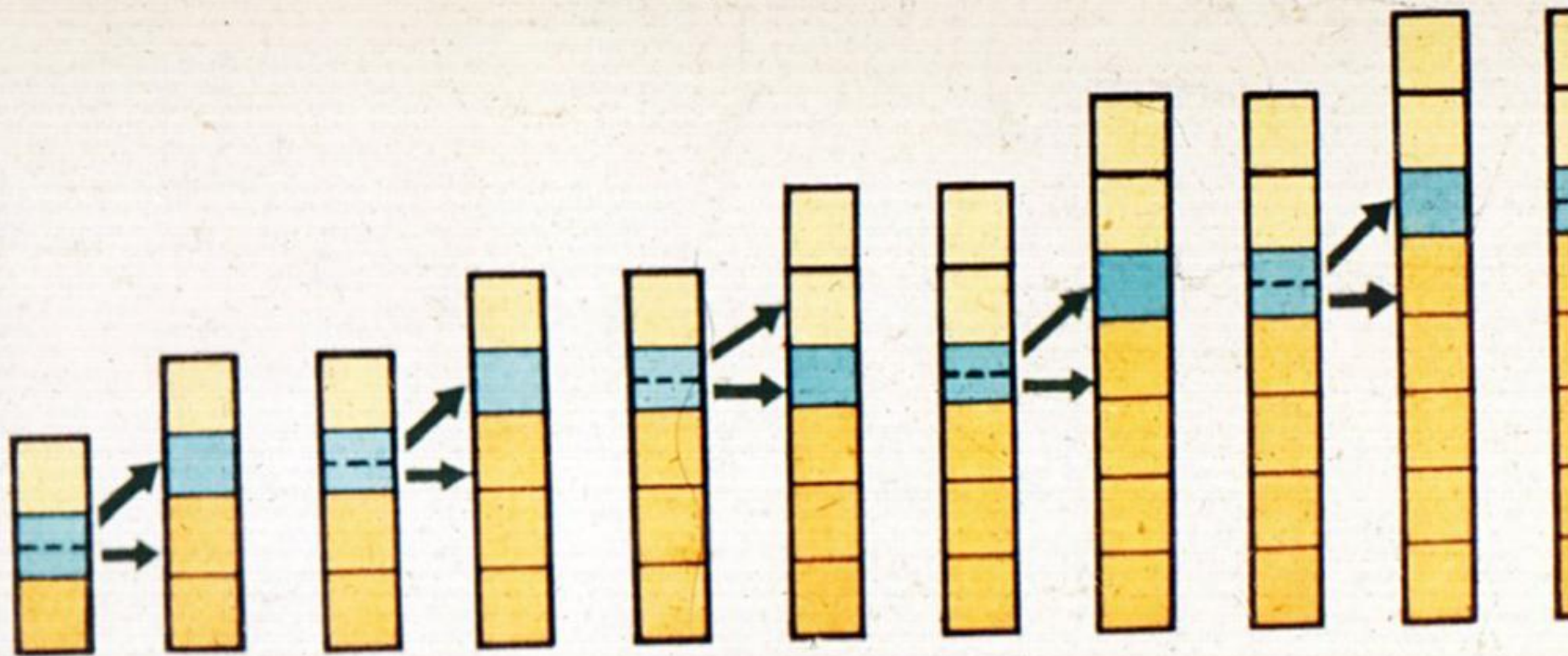
Клетки камбия

Сердцевина

Кожница стебля

Сосудисто-волокнистый пучок



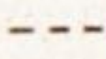


Клетки коры

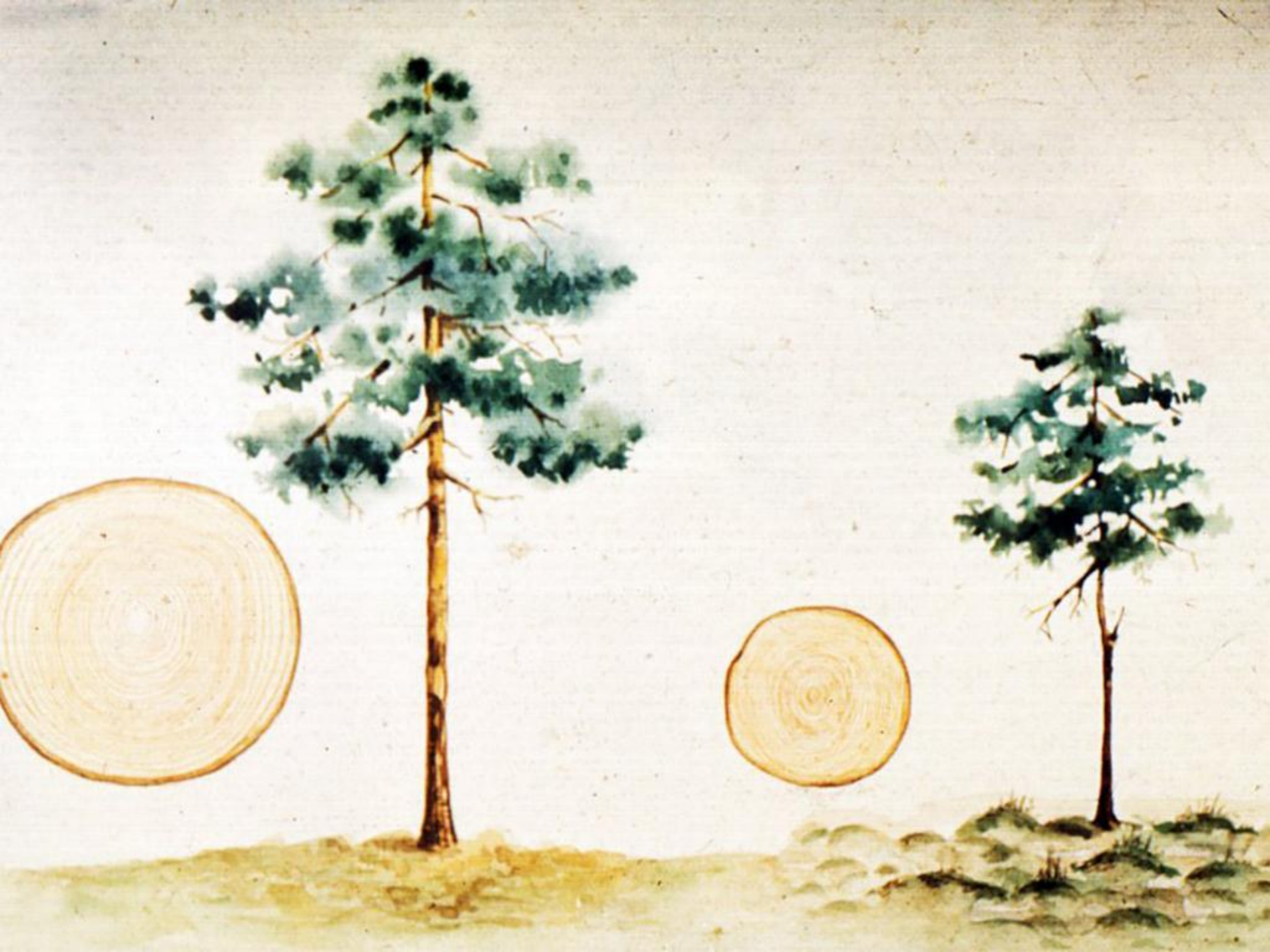


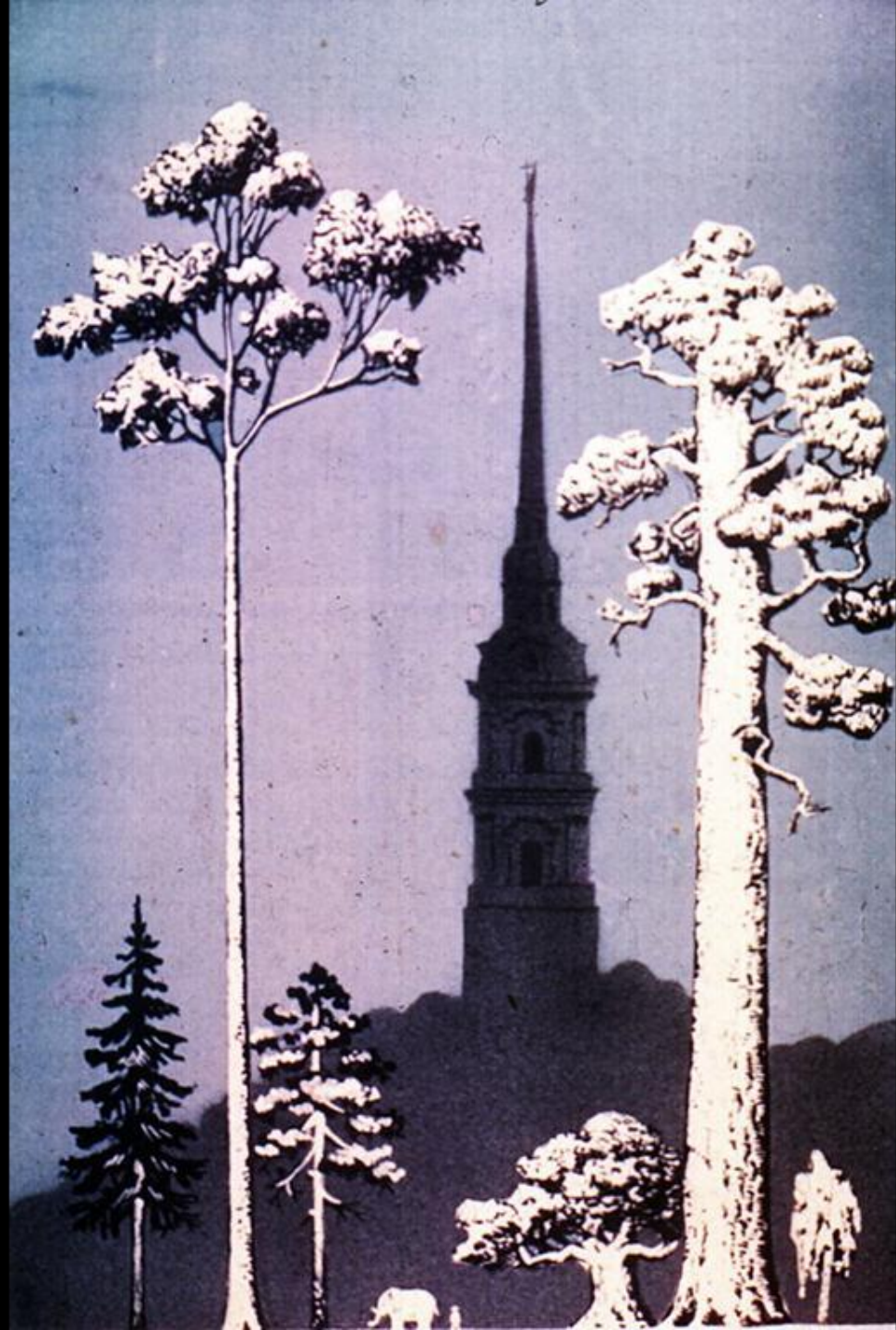
Клетки древесины

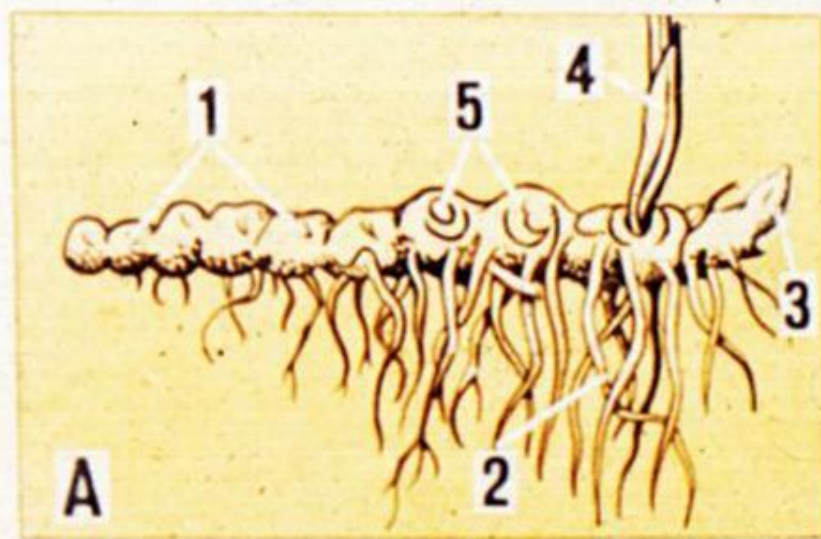
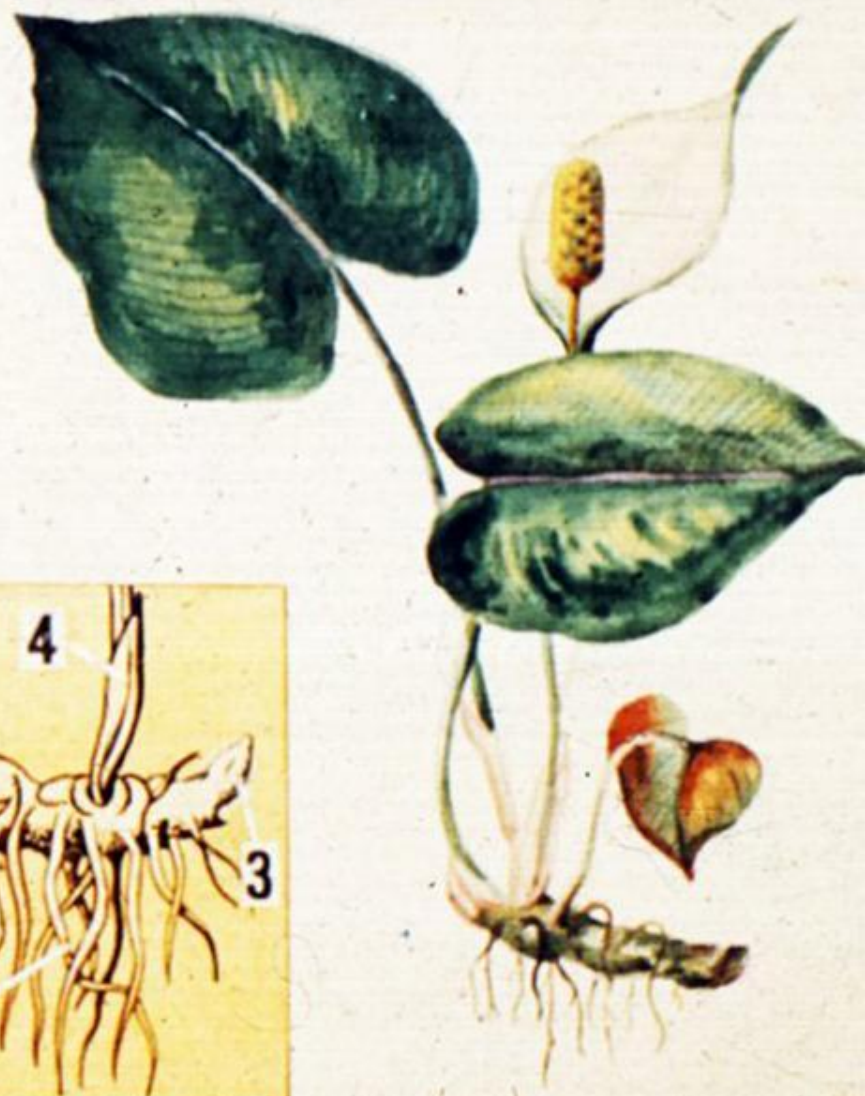
Клетки камбия

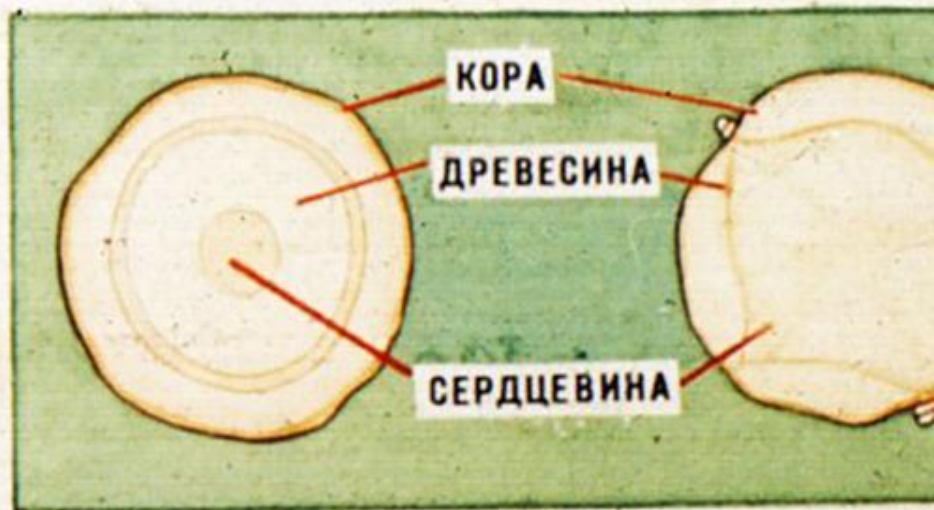
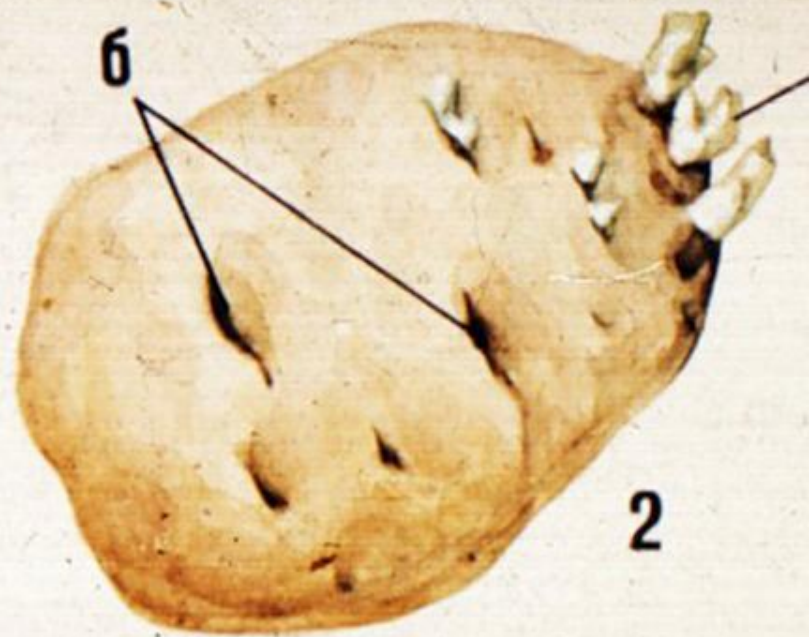


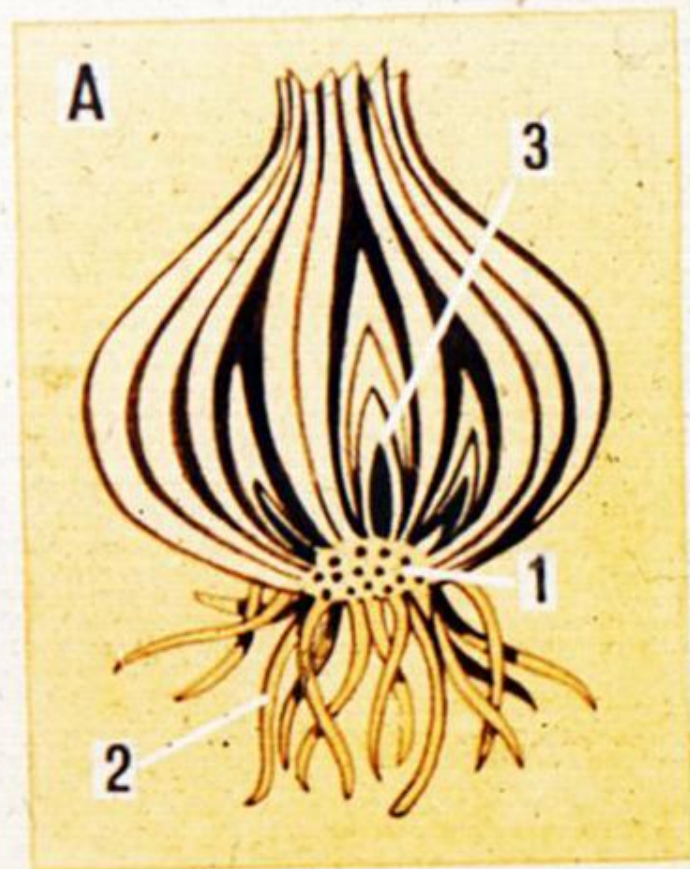
Намечающееся деление  
клетки камбия



















1



2



