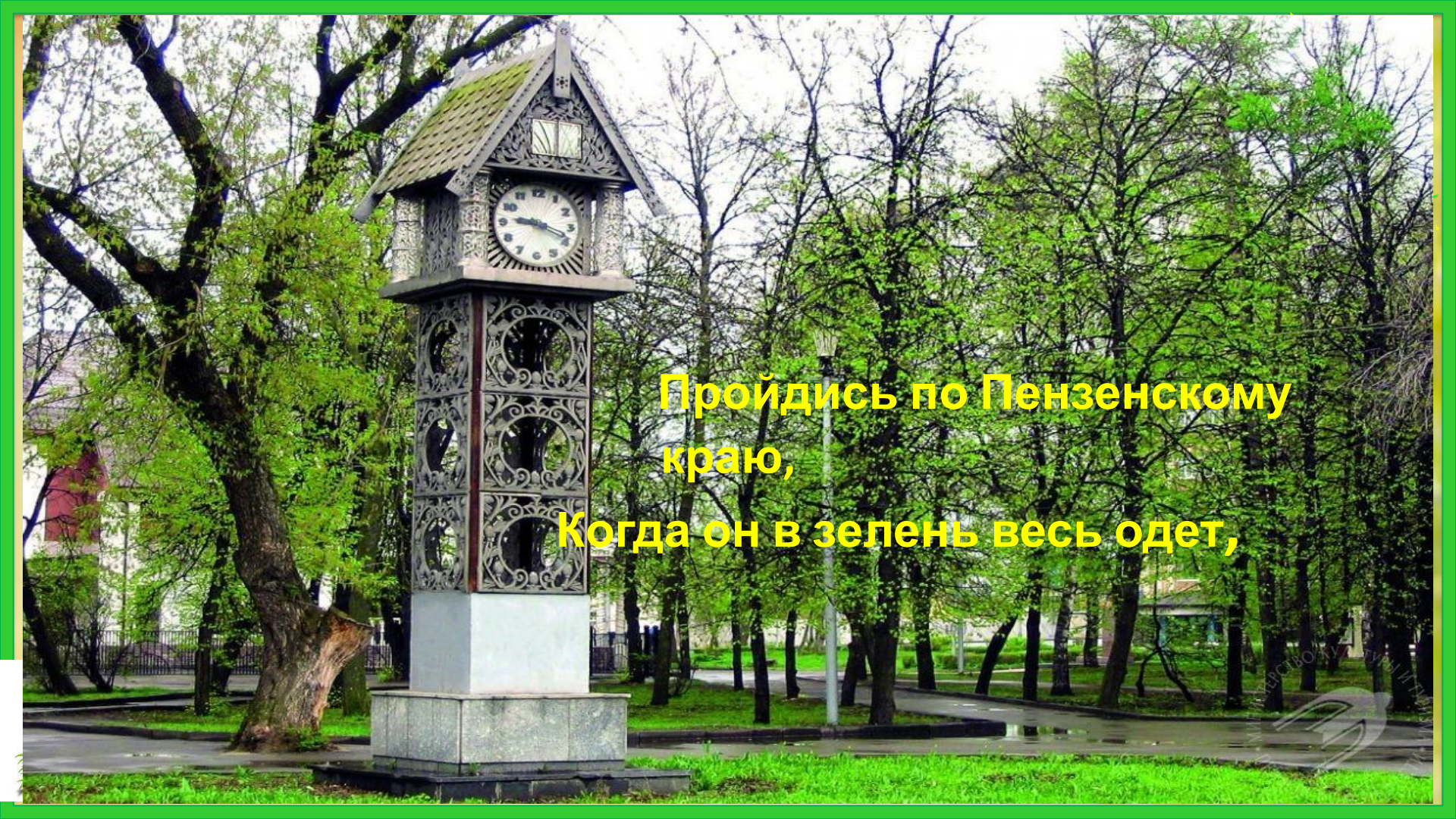


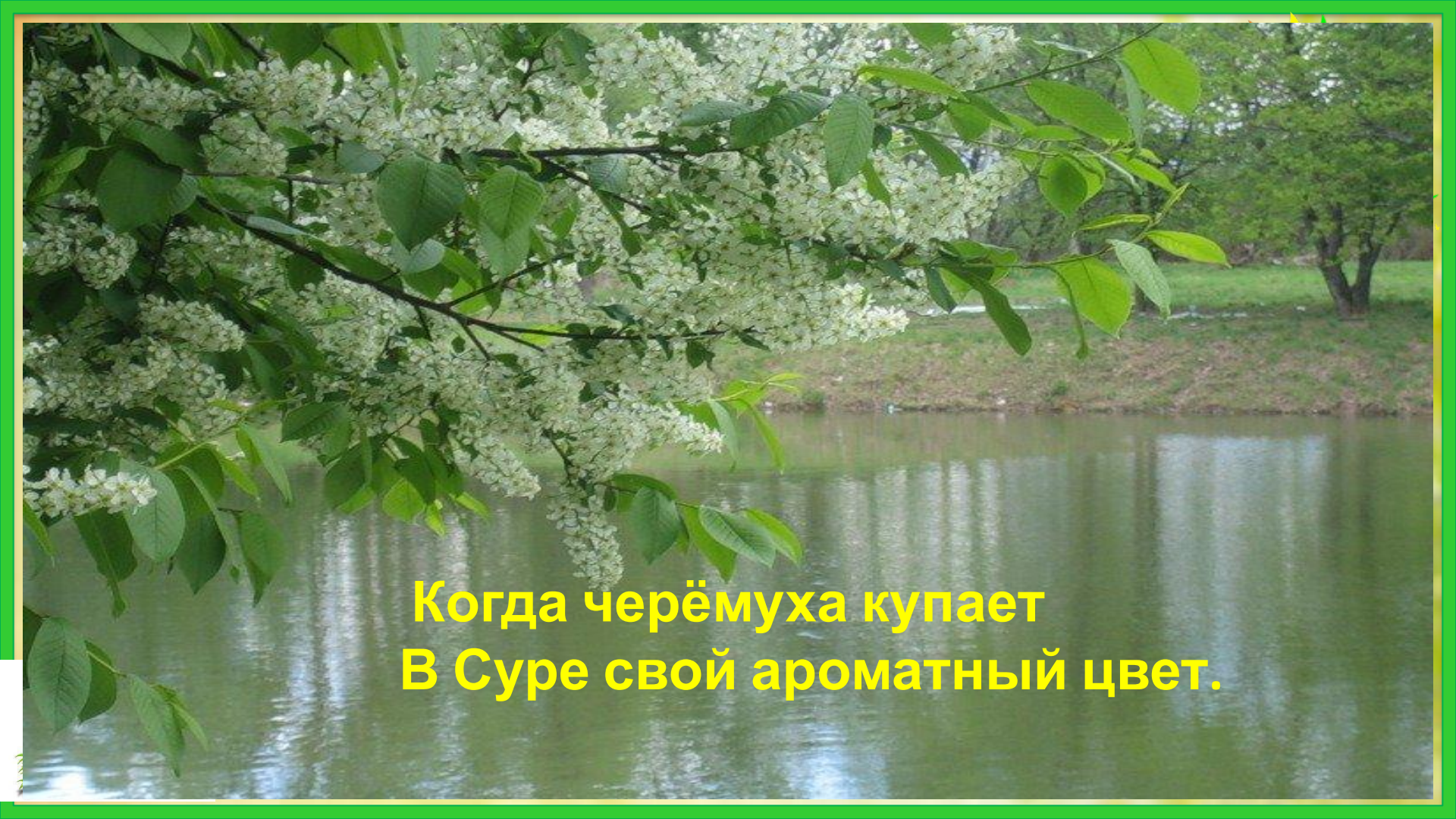
The background is a soft, light green color with a subtle pattern of stylized green leaves and stems. Scattered throughout are several small, delicate illustrations: a blue dragonfly in the upper left, a yellow butterfly in the upper right, and another yellow butterfly in the lower right. In the bottom left corner, there is a larger, more detailed illustration of a butterfly with orange and black wings and white spots. The overall aesthetic is gentle and natural, evoking a sense of spring.

Матрёна Платоновна Смирнова

Пройдись по Пензенскому краю...

A tall, ornate stone clock tower stands in a park. The tower has a gabled roof with a clock face on the front. The body of the tower is decorated with intricate carvings and circular openings. It sits on a rectangular stone base. The background is filled with lush green trees and a paved path.

**Пройдись по Пензенскому
краю,
Когда он в зелень весь одет,**

A photograph showing a close-up of a cherry branch with green leaves and clusters of small white flowers. The branch hangs over a calm body of water, likely a pond or lake. The water reflects the surrounding greenery and sky. In the background, there are more trees and a grassy bank. The entire image is framed by a green border.

**Когда черёмуха купает
В Суре свой ароматный цвет.**

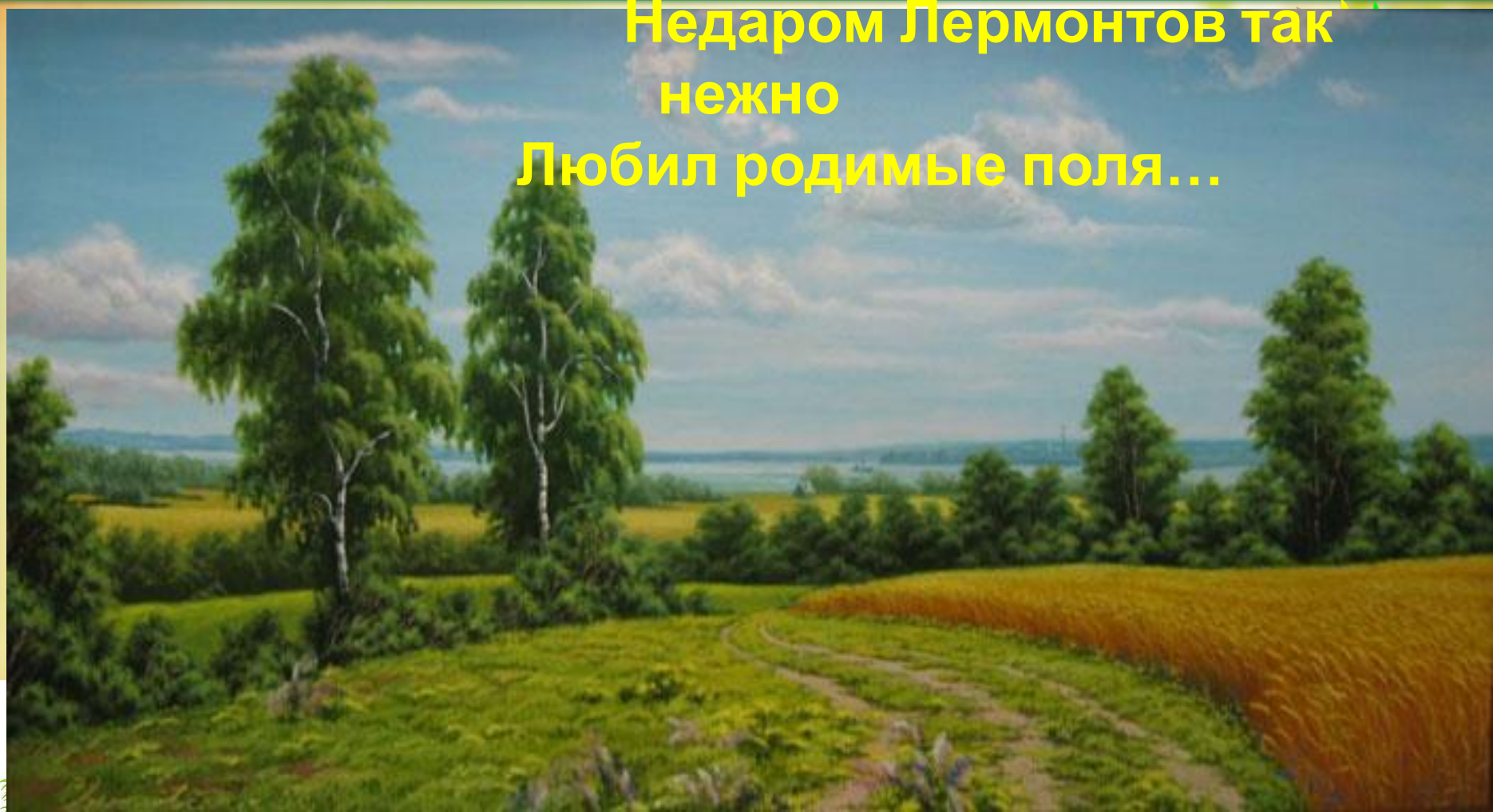


Сады в одежде белоснежной,

В зеленом бархате земля.



Недаром Лермонтов так
нежно
Любил родимые поля...



Пройдешь июльской

порою

Любой дорогой полевой,

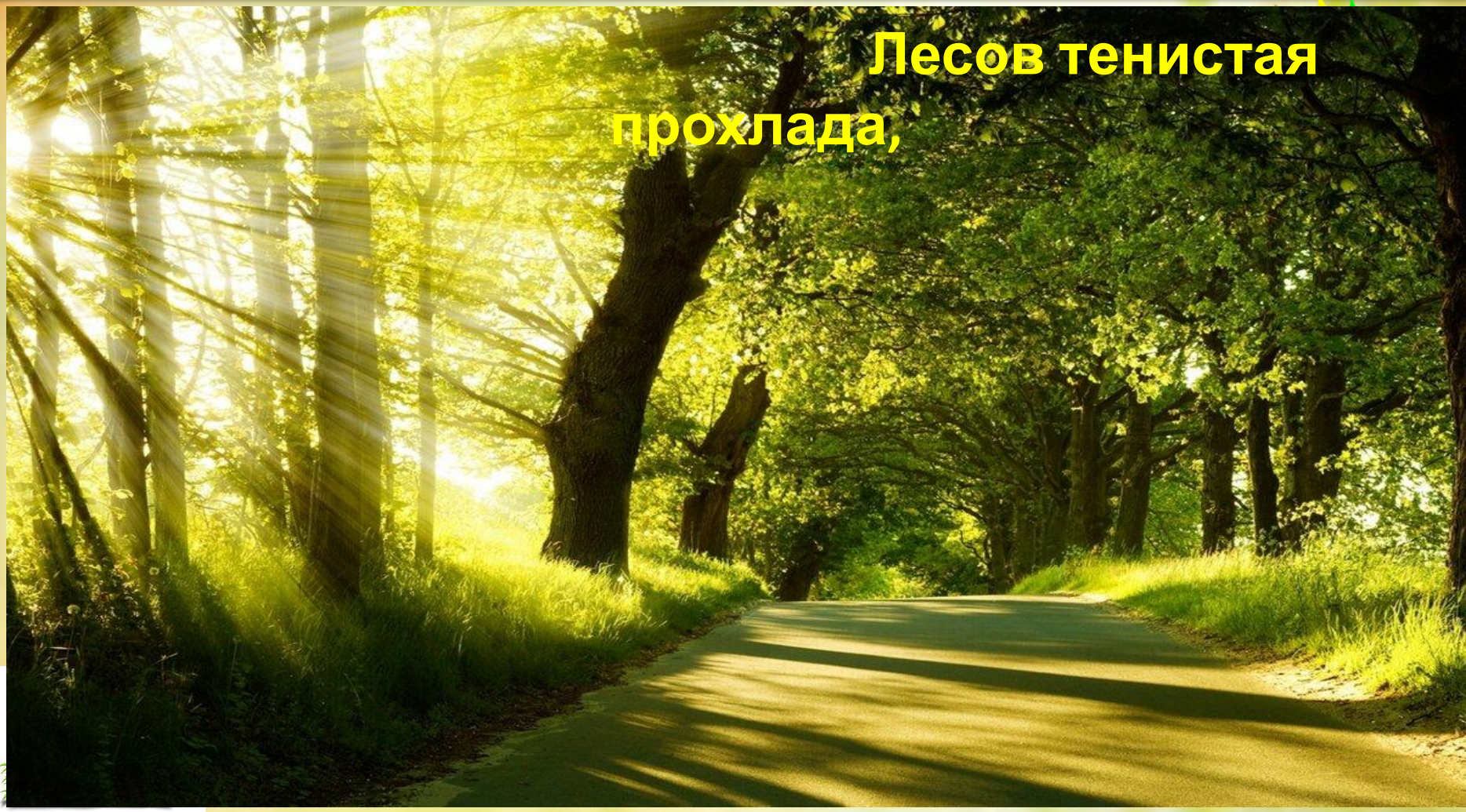
Хлеба над Мокшей и

Сурою

Стоят высокою стеной.



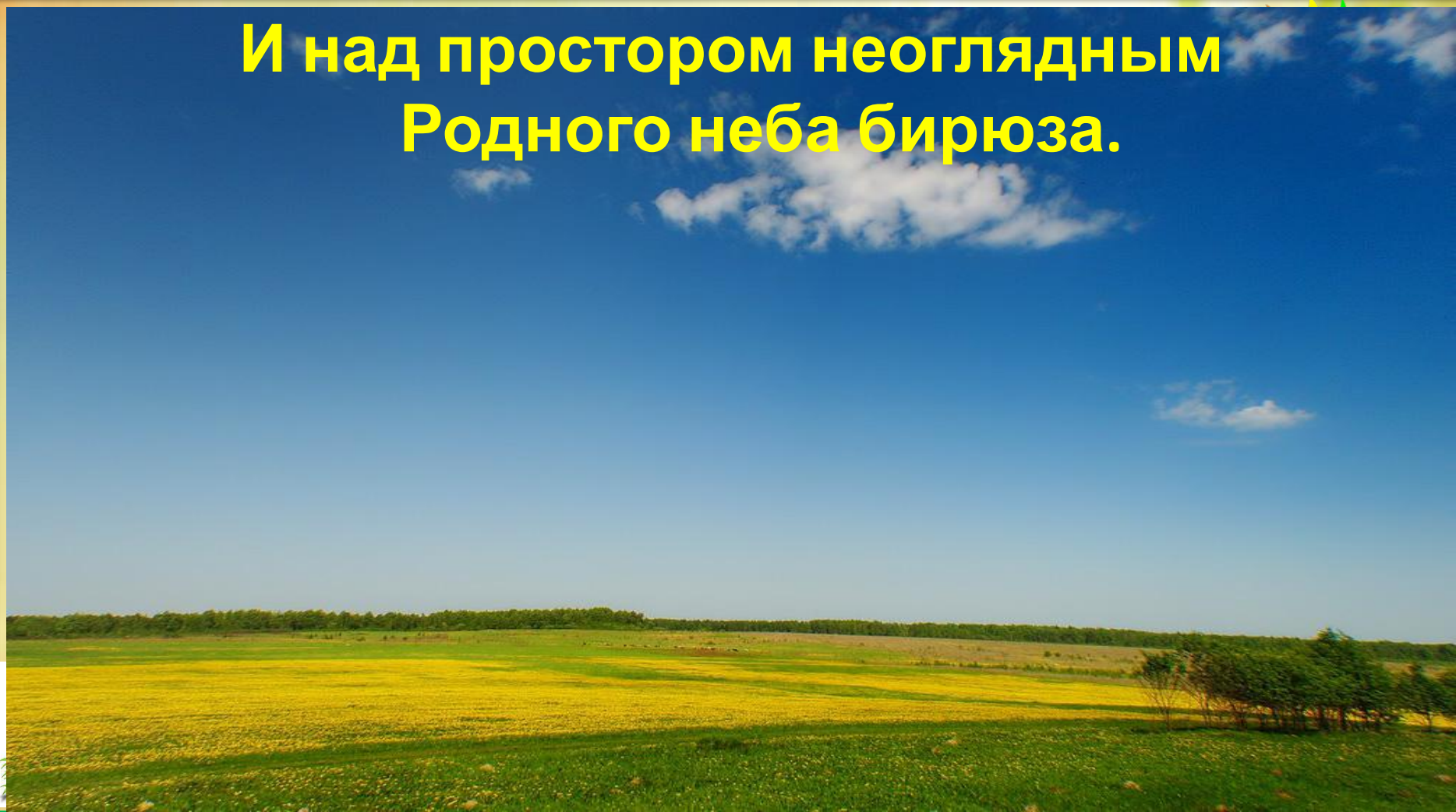
Лесов тенистая
прохлада,






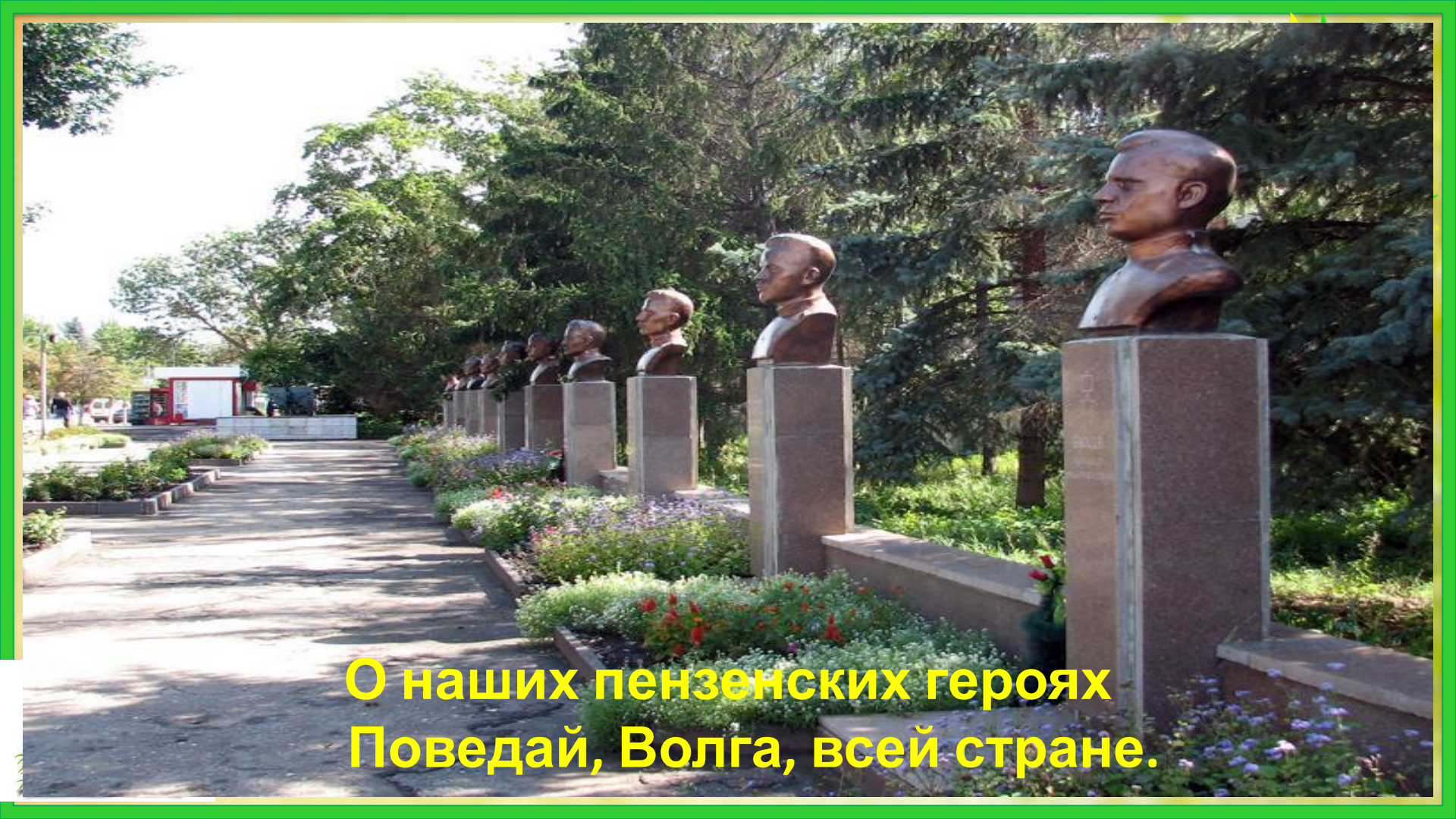
**Ручьи как детская
слеза.**

**И над простором неоглядным
Родного неба бирюза.**



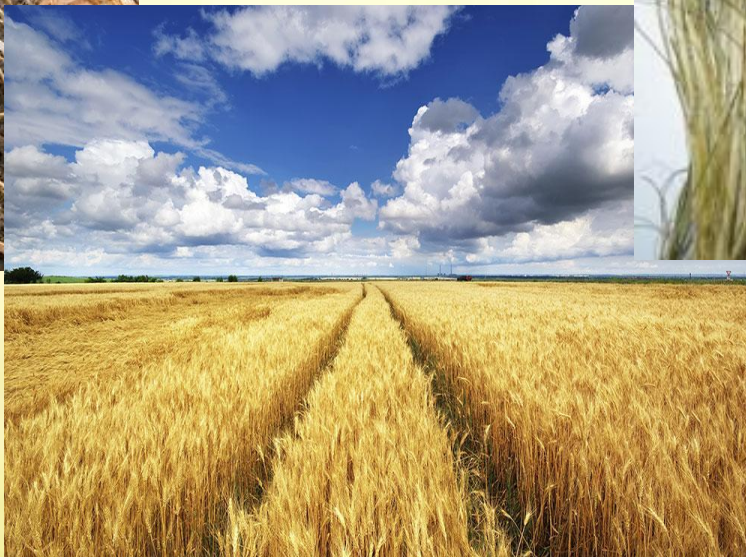
An aerial photograph showing the confluence of the Sura and Volga rivers. The Sura river, a tributary, flows from the upper left towards the center, where it meets the much larger Volga river. The Volga river flows from the bottom left towards the right. The surrounding landscape is a mix of dense green forests on the left and rolling green fields on the right. The water in the Volga river is a dark, silty grey, while the Sura river is a lighter, clearer blue-grey. The sky is a pale, hazy blue.


**Встречаясь с-Волгою-рекою,
Сура твердит ее волне:**

A photograph of a memorial park in Penza, Russia. A long, straight path leads through a row of bronze busts of heroes, each mounted on a tall, rectangular stone pedestal. The busts are arranged in a line, receding into the distance. The park is lush with green trees and flowers, including purple and red blooms in the foreground. In the background, a white building and a red structure are visible under a clear sky.

**О наших пензенских героях
Поведай, Волга, всей стране.**

О нашем луке и пшенице, О волокнистой конопле.





**О том, что стало все родиться
На вольной пензенской земле.**

ИСТОЧНИ

КИ

https://img-fotki.yandex.ru/get/6311/485402_12/_/b9f30_2a2c8881_L

https://d.backbook.me/file/2018/05/12/af/full_56bf0978d9.jpg

<http://www.reignbeauxfilms.com/wp-content/uploads/2015/09/rainbowbutterflies-210x210.png>

<https://www.superprof.es/imagenes/anuncios/clases-particular-clases-apoyo-fisica-quimica-matematicas-economicas.jpg>

https://kak2z.ru/my_img/img/2017/07/14/85526.png

http://korablik86.ru/upload/iblock/8fa/2017-07-14_115719.jpg

