

Путешествие в Лондон

Работу выполнила: Жила Людмила Ивановна,
учитель английского языка
МБОУ «СОШ №4»
г. Сафоново Смоленской области

Путешествие в Лондон



London

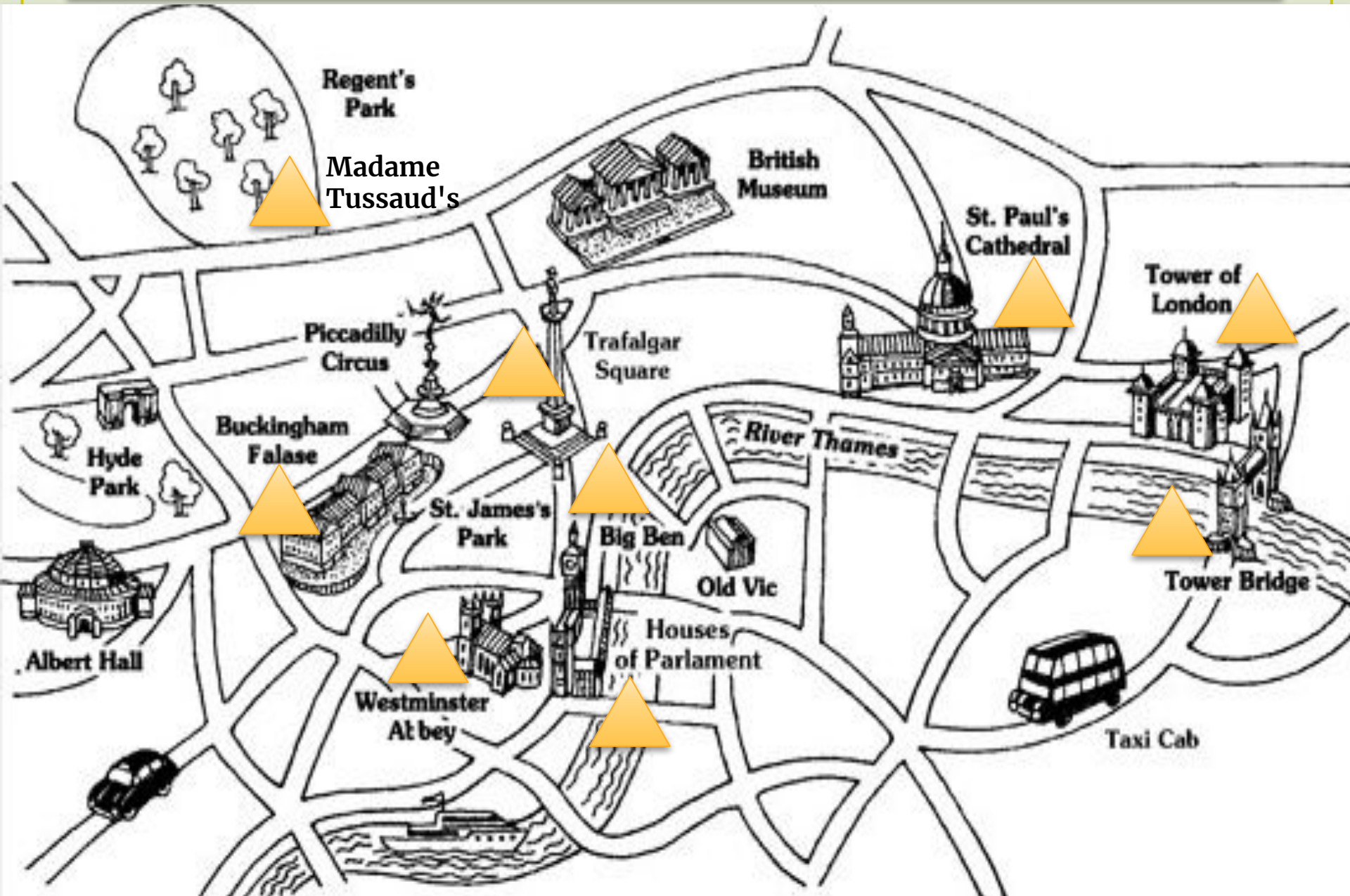
London is the capital of England. It is the biggest city in Britain. It stands on the river Thames. More than seven million people live and work there. It is a centre for business and for tourism.



The River Thames



In London there are a lot of places to visit.



Tower Bridge



Until 1749 London Bridge was the only bridge on the Thames. In 1824 – 31 it was rebuilt. In 1968 it was sold to the USA. In 1973 a new bridge was opened.

Tower Bridge was opened in 1894.







Trafalgar Square

Trafalgar Square is the geographical centre of London. It is the most beautiful square in London.

Trafalgar Square was named in memory of Admiral Nelson's victory in the battle of Trafalgar in 1805. The tall Nelson's Column stands in the middle of the square.



Four bronze lions look at the square from the monument.
There are two beautiful fountains in the square.





The Tower of London

The heart of London is the City. You can visit some interesting places in the city or near it. One of them is the Tower of London. It was a fortress , a place, a prison and king's zoo.

Now it is the museum.

This is the oldest Tower.



A lot of ancient traditions and customs are carefully kept in the Tower. For example, taking care of the ravens in the Tower. The legend says: till the ravens are alive England will be rich.



St. Paul's Cathedral

St. Paul's Cathedral is the largest Protestant Church in England.

The famous English architect Sir Christopher Wren built St. Paul's Cathedral in the 17th century. It took Sir Christopher Wren 35 years. It is a beautiful building with many columns and towers. In one of its towers there is one of the largest bells in the world.







The Houses of Parliament



The Houses of Parliament is the seat of the British Parliament. It is the symbol of London.



BIG BEN



The large clock in one of the towers of Houses of Parliament is
BIG BEN.

You can hear the sound of Big Ben every hour in London.
The clock and the bell got their names after Sir Benjamin .
He was a tall man whose nickname was Big Ben.





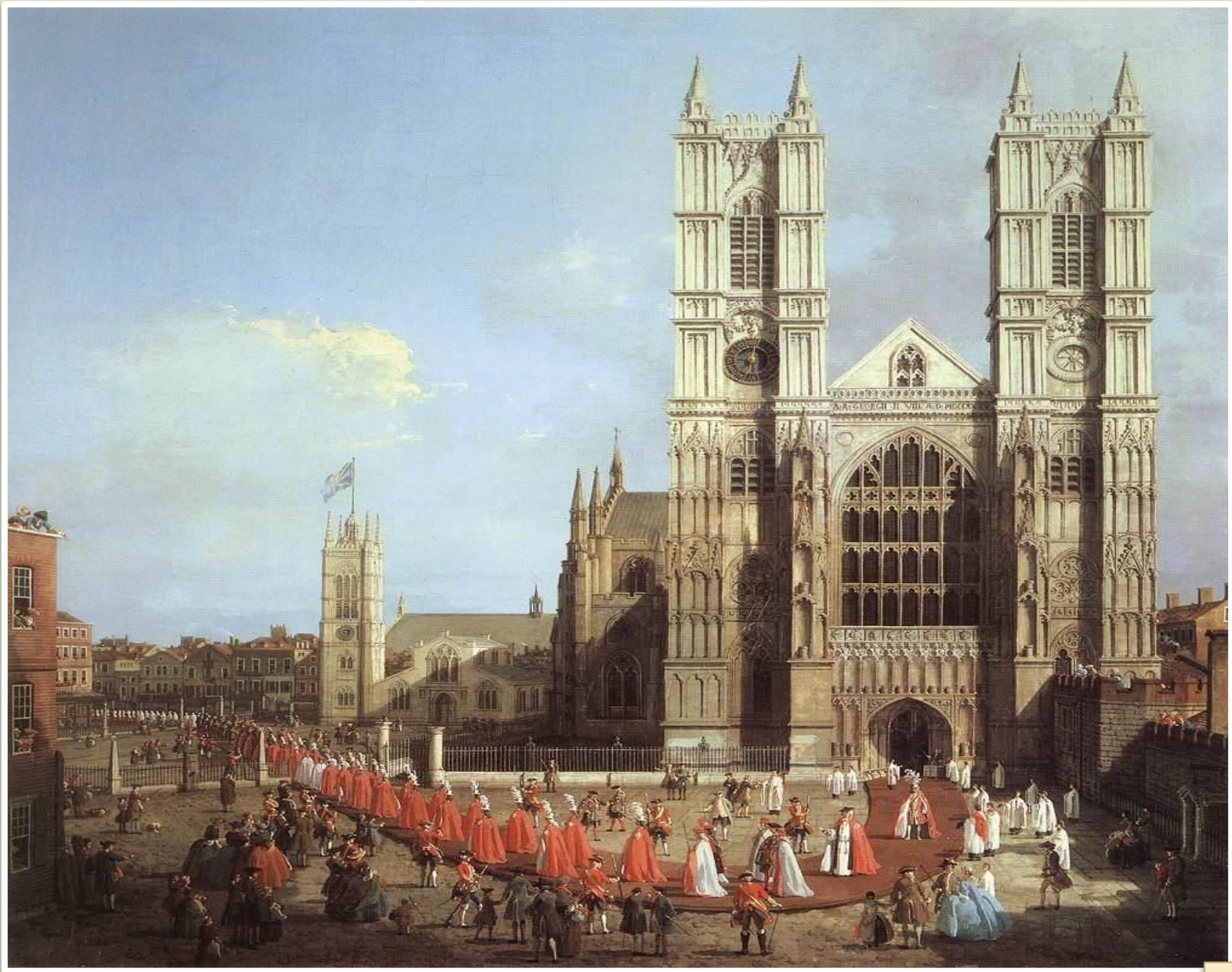
Westminster Abbey

Westminster Abbey is one of the most famous and beautiful churches in London. It was founded by Edward the Confessor in 1050. The construction lasted 300 years.

Nearly all English kings and queens have been crowned here. Many outstanding scientists, statesmen, writers, musicians and painters are buried here: British monarchs, Darwin, Newton. In the Poet's Corner one can find the tombs of William Shakespeare, Byron, Kipling, T.S. Eliot and others.







Buckingham Palace

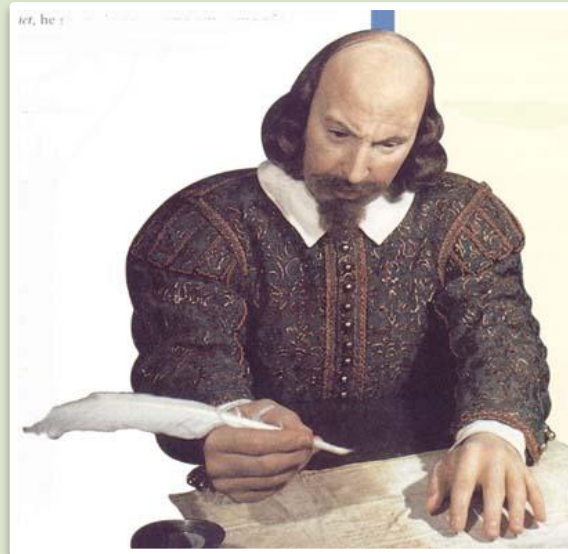


Madame Tussaud's

Museum has the models of famous people from pop stars to prime ministers, displays of battles and a Chamber of Horror. It has one of the largest collections of wax models in the world.



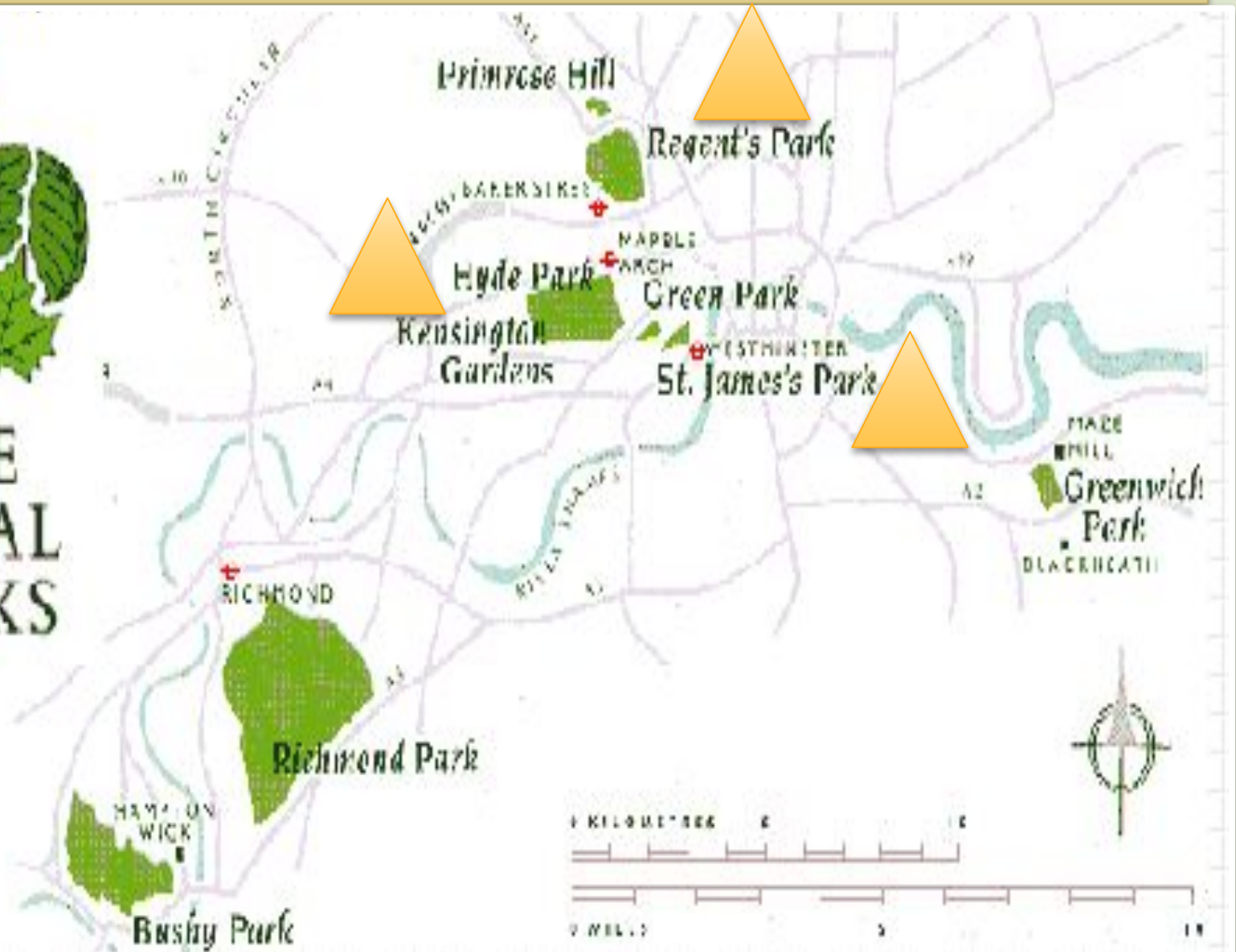
Madam Tussaud's Waxworks



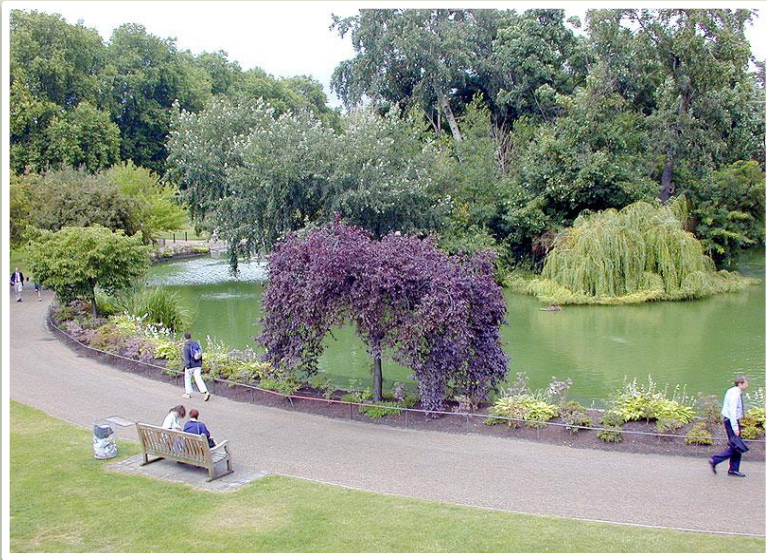
Parks of London



THE
ROYAL
PARKS



St. James's Park



St. James's Park, the oldest London park, is very beautiful with its trees and flower beds and view of Buckingham Palace.



Hyde Park



Hyde Park is famous for its outdoor entertainments and its Speaker's Corner.



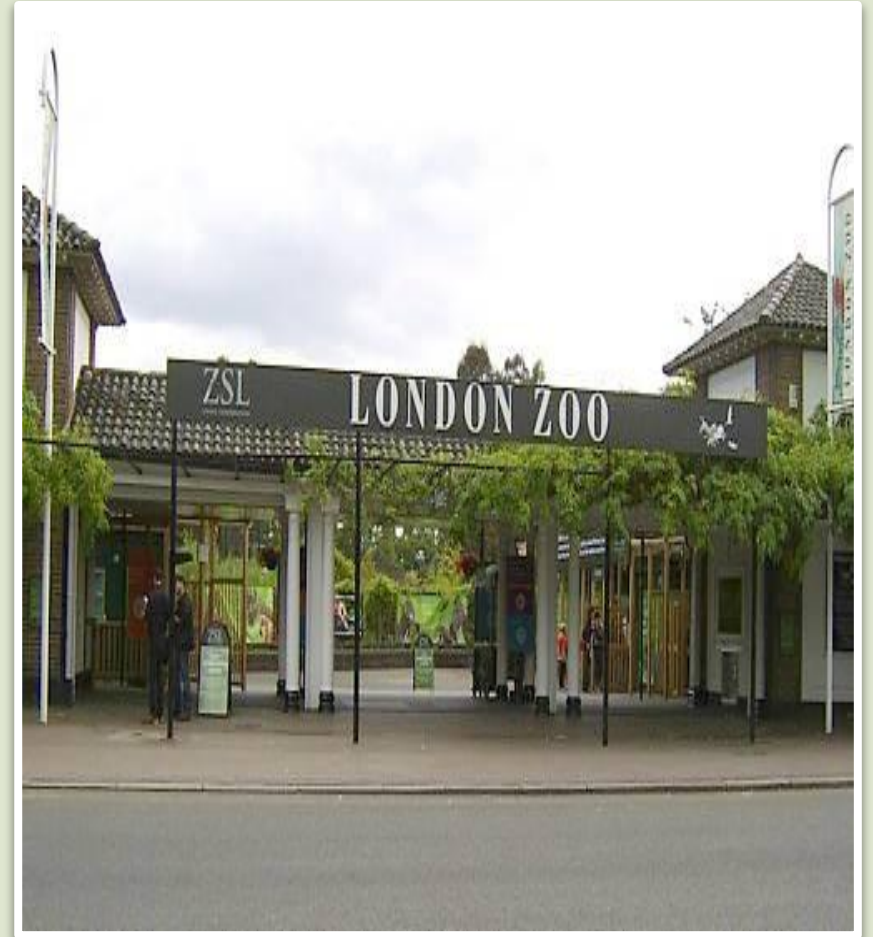
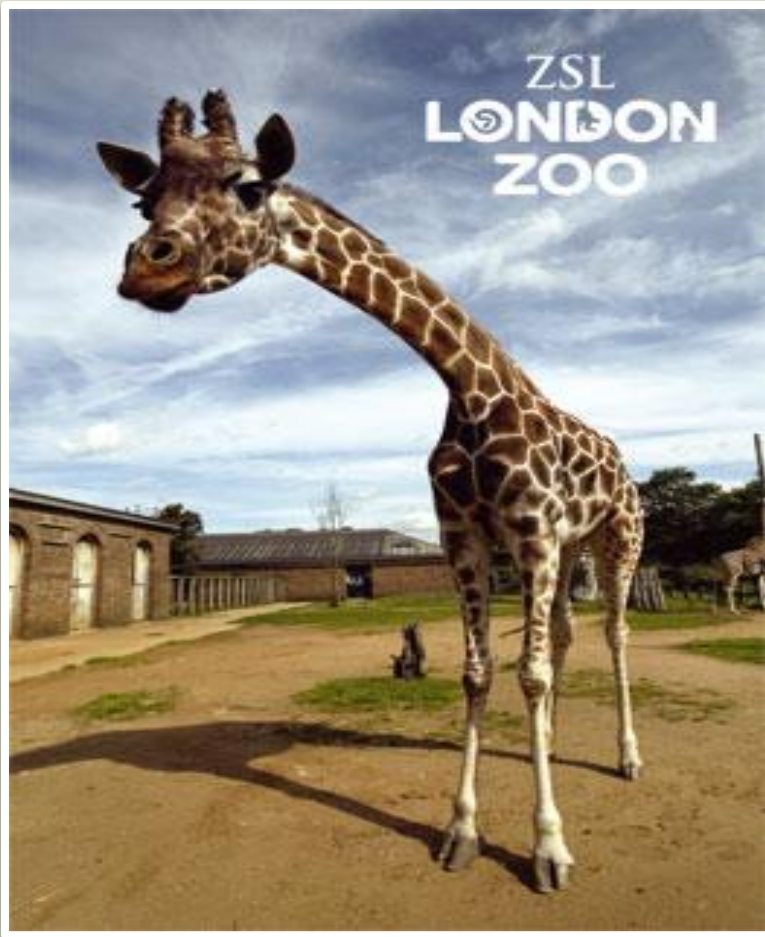


Regen's Park

Regent's Park has London Zoo, a boating lake and an open-air theatre, where in summer you can enjoy Shakespeare's plays.



London Zoo





Проверь себя



Match the picture and the words:



Buckingham Palace

The Tower of London

Big Ben



Test

Westminster Abbey is ...

a) a royal church

b) a theatre

c) a museum



Test

Nelson's Column is in the middle of...

a) Red Square

b) Hyde Park

c) Trafalgar Square



Test

The clock Tower is called...

a) The Spasskaya Tower

b) Nelson's Column

c) Big Ben



Список источников

- wikipedia.org – Дата обращения 27.06.2013
- <http://images.yandex.ru/> – Дата обращения 27.06.2013
- Личные разработки учителя

**Спасибо за
внимание!**

