
A vertical panel showing a bright, clear blue sky with soft, white clouds, representing the summer season.


Summer

A vertical panel showing a hazy, golden-yellow sky with soft, white clouds, representing the autumn season.


Autumn

A large, solid purple rectangular banner with white text in the center, reading "Welcome to our lesson!".

**Welcome to our
lesson!**

A vertical panel showing a dirt road winding through a lush green field with a fence, representing the spring season.

Spring

A vertical panel showing a snowy landscape with a fence and a building in the background, representing the winter season.

Winter

Seasons



The aims of the lesson:

1. Оқушыларға жыл мезгілдерін ағылшын тілінде көрсетіп түсіндіру.
2. Оқушылардың ойлау, сөйлеу және есте сақтау қабілеттерін дамыту.
3. Сөздік қорларын молайту.
4. Оқушыларды табиғатты аялауға баулу.



Phonetic dr



Spring is green

Summer is bright

Autumn is yellow

Winter is white





[ei] - plane, name, date, may

[əu] - stone, note, nose, rose

[ɔ] - dog, stop, not, box

[e] - pet, pen, bed, red

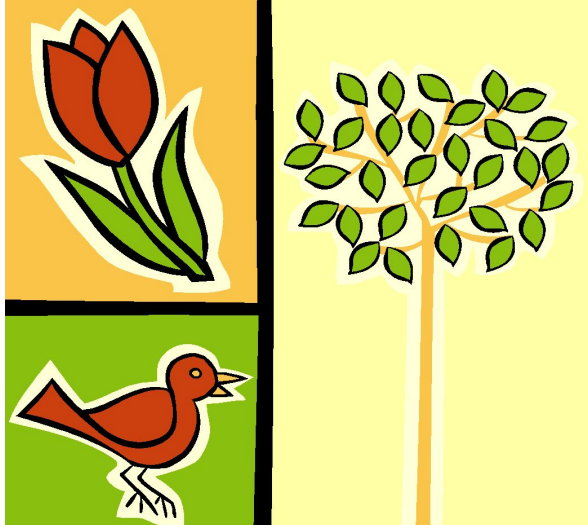


Season [si:zn] жыл мезгілі
Winter [wintə] қыс
Spring [sprɪŋ] көктем
Summer [sʌmə] жаз
Autumn [ə:təm] күз
January [dʒænjuəri] қаңтар
February [februəri] ақпан
March [ma:tʃ] наурыз
April [eɪprɪl] сәуір
May [meɪ] мамыр
June [dʒu:n] маусым
July [dʒu:ai] шілде
August [ə:gəst] тамыз
September [septembə] қыркүйек
October [əktəʊbə] қазан
November [no (u) vembə] қараша
December [disembə] желтоқсан

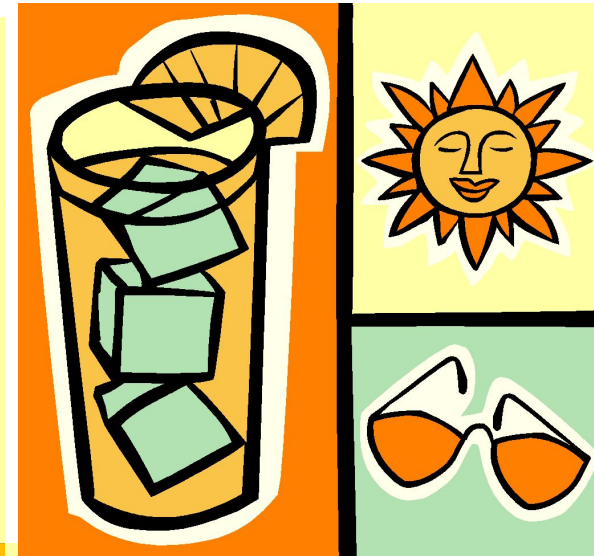


Seasons

SPRING



SUMMER



AUTUMN



WINTER





Winter months





Spring months





Summer months





Autumn months





Spring is the beautiful season. The sun often shines, the sky is blue, the birds sing songs. In May the trees and grass are bright green.



Summer is a bright season. The trees are green. It's hot and we can swim in the river.



This is autumn season. The leaves in the trees are red, yellow, brown and green.



Winter is the white beautiful season. The trees are white with snow. There is a lot of snow in the streets and in the park.

Complete the sentences according to the text.

1. There are four _____ in a year: spring, summer, autumn and winter.
2. The _____ is very cold.
3. June, July and August are _____ months.
4. They have _____ holidays.
5. It is time for _____ and vegetables.

1. are/ December/ winter/ February/
and/ months/January.

2. months/ are/ March/ May /April/
spring /and.

3. summer/ are/ August/ June/ months/
and /July.

4. November/ are /autumn/ October/
and/ September/ months.

Match the words to the seasons.

T-shirt, swimsuit, shirt, jumper, scarf, sun hat, dress, coat, skirt, gloves.

Summer

1 _____

2 _____

3 _____

4 _____

5 _____

winter

1 _____

2 _____

3 _____

4 _____

5 _____

Write and answer

Do flowers grow in summer?

Do leaves turn brown in spring?

Do new leaves grow in autumn?

Do snowflakes fall in summer?

Do leaves turn brown in autumn?

Do flowers grow in winter?

Do new leaves grow in spring?

Yes, they do.

No, they don't.



Put the names of months into 4 groups.

**September, January, March, June, October, August,
February, July, December, May, November, April.**



winter



summer



spring



autumn

Label the cards with the names of the seasons:



a) _____



b) _____



c) _____



d) _____

Let`s sing a song



Spring is green

Look at the pictures. Write the words in the alphabetical order.

8

SEPTEMBER



JUNE



**Thank you for your
attention
Good bye!**

