



ОПРЕДЕЛЕНИЕ УРОВНЯ МЕЖДУНАРОДНОГО РАЗДЕЛЕНИЯ ТРУДА НА ПРИМЕРЕ НОРВЕГИИ И ШВЕЦИИ



Выступление подготовили:

Михайлова Кристина

Никифоров Сергей

Пирогов Дмитрий

Рауткина Марина

Санджиева Алтана

2015 г.

Расчет показателей группы А

Уровень развития МРТ с учетом экспортно-импортных операций с 2008 по 2014 (2013) годы, используя 2-е информационные базы данных:

- <http://stat.wto.org>
- <http://unctadstat.unctad.org>



Français | Español

Contact us | Site map | A-Z

Search:

Login

- Home
- About WTO
- News and events
- Trade topics
- WTO membership
- Documents, data and resources**
- WTO and you

home > resources



Document

"Documents and publications, via committees and working groups, via publications, via agreements that"

Official documents WTO "Documents Online" Documents for meetings Legal texts GATT documents	Statistics Merchandise trade Trade in Services Tariffs Non-Tariff Measures (NTMs) Global Value Chains (GVCs)	Multimedia Audio/podcasting Video Photos Maps
Publications Key publications By title By category/subject Online bookshop WTO bookshop in Geneva Library	Economic research World Trade Report Working papers WTO Chairs Programme	Other resources Glossary Distance learning ECampus Terminology database

and research, WTO of WTO

> [GATT documents](#)

Documents Online

Detailed information about the WTO's work is published in the official documents of the WTO's councils, committees, working groups etc. These are made available through the Documents Online database.

- > [Documents Online](#)
- > [Documents Online search facility](#)
- > [Documents for meetings](#)
- > [Browse recent and frequently consulted documents](#)



FEATURE

Publication details

Annual



STATISTICS

Merchandise trade

WTO provides data on imports and exports of goods, aggregated or individually by product and/or country. Annual data are updated in April and in July of each year, and broken down by commodity group and selected origin and destination in August. Quarterly data are updated every 2 weeks and monthly data are updated daily.

Copyright:

Permission to make digital or hard copies of any information contained in these web pages is granted for personal or classroom use, without fee and without formal request.

Full citation and copyright notice must appear on the first page.

Copies may not be made or distributed for profit or commercial advantage.

To republish, to post on servers, or to redistribute to lists, requires prior specific permission and/or fee.

Databases and Time Series [back to top](#)

- [Statistics Database \(SDB\)](#)
Online database containing time series on international trade, country trade, tariff and [services profiles](#).
Updated 3 times a year, in April, July and in August.
- [Short-term trade statistics](#)
Monthly data updated daily and quarterly data updated every 2 weeks.

Annual publications [back to top](#)

- [International Trade Statistics](#)
Comprehensive overview of world merchandise and services trade.
Released yearly in October.
- [Trade Profiles](#)
Country-by-country data on trade flows and trade policy measures.
Released yearly in October.
- [World and Regional Merchandise Export Profiles](#)
Data on exports by region.
Released yearly in October.

Statistics database

Welcome to the WTO Statistics Database, which allows you to retrieve statistical information in the following presentations.

- The *Trade Profiles* provide predefined information leaflets on the trade situation of members, observers and other selected economies;
- The *Tariff Profiles* provide information on the market access situation of members, observers and other selected economies;
- The *Services Profiles* provide detailed statistics on key infrastructure services (transportation, telecommunications, finance and insurance) for selected economies;
- The *Aid for Trade Profiles* provide information on trends of aid for trade, trade costs, trade performance and development for selected Aid for Trade recipients;
- The *Time Series section* allows an interactive data retrieval of international trade statistics.

[Trade Profiles](#) go

[Tariff Profiles](#) go

[Services Profiles](#) go

[Aid for Trade Profiles \(download complete set of profiles\)](#) **NEW**

- [Excel version, including time series \(in compressed Zip format\)](#) go
- [PDF version \(in compressed Zip format\)](#) go

[Time Series on international trade](#) go

[Trade policy measures: the Integrated Trade Intelligence Portal \(I-TIP\)](#) go



- [Statistics gateway](#)
- [Contact Statistics](#)
- [Contact Tariffs](#)

Copyright:

Permission to make digital or hard copies of any information contained in these Web pages is granted for personal or classroom use, without fee and without formal request.

Full citation and copyright notice must appear on the first page.

Copies may not be made or distributed for profit or commercial advantage. To republish, to post on servers, or to redistribute to lists, requires prior specific permission and/or fee.



- ① SELECTION
 - ② VIEW DATA
 - ③ DOWNLOAD
- TECHNICAL NOTES

[Home](#) > [Resources](#) > [Statistics](#) > [Statistics database](#) > [Time series](#)

Time Series

This site provides a searchable database on international trade in merchandise and commercial services. The data are presented according to the product definitions and regional groupings specified in the technical notes.

Start by clicking "Selection" in the left column.

- [Statistics Database](#)
- [Statistics gateway](#)
- [Contact Statistics](#)
- [Contact Tariffs](#)



- 1 SELECTION
 - ▶ Subject
 - Reporter
 - Partner
 - Trade Flow
 - Unit
 - Year
- 2 VIEW DATA
- 3 DOWNLOAD
- TECHNICAL NOTES
- Statistics Database
- Statistics gateway
- Contact Statistics
- Contact Tariffs

Home > Resources > Statistics > Statistics database > Time series

Time Series - Subject selection

Select one of the data sets available from the dropdown list. Then, select corresponding indicator(s).

AVAILABLE INDICATORS	AVAILABLE DATA SETS	INDICATORS
	<ul style="list-style-type: none"> Merchandise trade by commodity Merchandise trade indices Network of world merchandise trade Selected regional integration agreements Total merchandise trade Trade in commercial services, 1980-2013 (BPM5) Trade in commercial services, 2005-onwards (BPM6) 	
	<p>REMOVE</p> <p>ADD ALL</p> <p>REMOVE ALL</p>	

Continue ▶



- 1 SELECTION
 - ▶ Subject
 - Reporter
 - Partner
 - Trade Flow
 - ✓ Unit
 - Year
- 2 VIEW DATA
- 3 DOWNLOAD

Home > Resources > Statistics > Statistics database > Time series

Time Series - Subject selection

Select one of the data sets available from the dropdown list. Then, select corresponding indicator(s).

AVAILABLE DATA SETS

Total merchandise trade ▼

Total merchandise exports and imports, by region and selected economy, 1948-2014.

At least one item should be selected

AVAILABLE INDICATORS

- ADD
- REMOVE
- ADD ALL
- REMOVE ALL

SELECTED INDICATORS

Total merchandise

- TECHNICAL NOTES
- Statistics Database
 - Statistics gateway
 - Contact Statistics
 - Contact Tariffs

Continue ▶



- 1 SELECTION
 - ✓ Subject
 - ▶ Reporter
 - Partner
 - Trade Flow
 - ✓ Unit
 - Year
- 2 VIEW DATA
- 3 DOWNLOAD
- TECHNICAL NOTES
 - Statistics Database
 - Statistics gateway
 - Contact Statistics
 - Contact Tariffs

Home > Resources > Statistics > Statistics database > Time series

Time Series - Reporter selection

You can select either individual reporter(s) or group(s) of reporters. Refer to the technical notes for the composition of groups of reporters.

GROUP

All individual reporters (Incl. world) ▼

- AVAILABLE REPORTERS**
- Slovak Republic
 - Slovenia
 - Solomon Islands
 - South Africa
 - Spain
 - Sri Lanka
 - Sudan
 - Suriname
 - Swaziland
 - Switzerland
 - Syrian Arab Republic

- ADD
- REMOVE
- ADD ALL
- REMOVE ALL

- SELECTED REPORTERS**
- Norway
 - Sweden

Continue ▶

- 1 SELECTION
 - ✓ Subject
 - ✓ Reporter
 - ▶ Partner
 - Trade Flow
 - ✓ Unit
 - Year
- 2 VIEW DATA
- 3 DOWNLOAD

- TECHNICAL NOTES
- Statistics Database
 - Statistics gateway
 - Contact Statistics
 - Contact Tariffs

[Home](#) > [Resources](#) > [Statistics](#) > [Statistics database](#) > [Time series](#)

Time Series - Partner selection

When European Union is available for selection, it is valid only for EU as a reporter; except for the Network and the Regional Integration Agreements data sets where other reporters can also be selected.

When available for selection, Extra-trade as a partner is valid for regional integration agreements as reporters.

AVAILABLE PARTNERS		SELECTED PARTNERS
European Union (15)	<input type="button" value="ADD"/> <input type="button" value="REMOVE"/> <input type="button" value="ADD ALL"/> <input type="button" value="REMOVE ALL"/>	World
European Union (27)		
European Union (28)		
Extra-trade		

[Continue](#) ▶

- 1 SELECTION
 - ✓ Subject
 - ✓ Reporter
 - ✓ Partner
 - ▶ Trade Flow
 - ✓ Unit
 - Year
- 2 VIEW DATA
- 3 DOWNLOAD

Time Series - Trade flow selection

[Home](#) > [Resources](#) > [Statistics](#) > [Statistics database](#) > [Time series](#)

Re-exports, when available for selection, are valid only for Singapore and Hong-Kong, China as reporters.

AVAILABLE TRADE FLOWS
Domestic exports
Re-exports
Retained imports

- ADD
- REMOVE
- ADD ALL
- REMOVE ALL

SELECTED TRADE FLOWS
Exports
Imports

[Continue](#) ▶

- Statistics Database
- Statistics gateway
- Contact Statistics
- Contact Tariffs



- 1 SELECTION
 - ✓ Subject
 - ✓ Reporter
 - ✓ Partner
 - ✓ Trade Flow
 - ▶ Unit
 - Year
- 2 VIEW DATA
- 3 DOWNLOAD

Time Series - Unit selection

Choose a unit from the list below.

AVAILABLE UNITS		SELECTED UNITS
	ADD	US dollar at current prices
	REMOVE	
	REMOVE ALL	

Home > Resources > Statistics > Statistics database > Time series

- TECHNICAL NOTES
- Statistics Database
 - Statistics gateway
 - Contact Statistics
 - Contact Tariffs

Continue ▶



- 1 SELECTION
 - ✓ Subject
 - ✓ Reporter
 - ✓ Partner
 - ✓ Trade Flow
 - ✓ Unit
 - ▶ Year
- 2 VIEW DATA
- 3 DOWNLOAD

Time Series - Year selection

AVAILABLE YEARS
2006
2005
2004
2003
2002
2001
2000
1999
1998
1997
1996

- ADD
- REMOVE
- ADD ALL
- REMOVE ALL

SELECTED YEARS
2014
2013
2012
2011
2010
2009
2008
2007

Home > Resources > Statistics > Statistics database > Time series

Continue ▶

- Statistics Database
- Statistics gateway
- Contact Statistics
- Contact Tariffs

- 1 SELECTION
 - ✓ Subject
 - ✓ Reporter
 - ✓ Partner
 - ✓ Trade Flow
 - ✓ Unit
 - ✓ Year
- 2 VIEW DATA
- 3 DOWNLOAD

Home > Resources > Statistics > Statistics database > Time series

View printable version Years Page 1 / 1

Subject: Total merchandise trade **Unit:** US dollar at current prices (Millions)

Reporter	Flow	Indicator	Partner	2007	2008	2009
Norway	Exports	Total merchandise	World	136354	171764	116778
Norway	Imports	Total merchandise	World	80297	90293	68970
Sweden	Exports	Total merchandise	World	168817	183327	130781
Sweden	Imports	Total merchandise	World	153226	168503	119876

TECHNICAL NOTES

Value flags

- Break in series
- Coverage difference
- Estimated value

- Statistics Database
- Statistics gateway
- Contact Statistics
- Contact Tariffs



- 1 SELECTION
 - ✓ Subject
 - ✓ Reporter
 - ✓ Partner
 - ✓ Trade Flow
 - ✓ Unit
 - ✓ Year
- 2 VIEW DATA
- 3 DOWNLOAD

Home > Resources > Statistics > Statistics database > Time series

View printable version Years Page 1 / 1

Subject: Total merchandise trade **Unit:** US dollar at current prices (Millions)

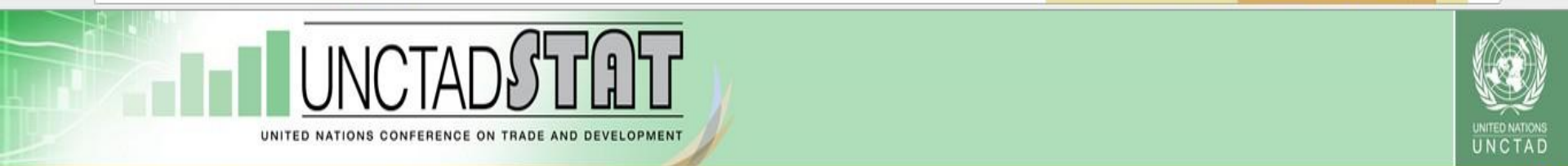
Reporter	Flow	Indicator	Partner	2010	2011	2012	2013	2014
Norway	Exports	Total merchandise	World	130657	160410	160952	154391	143893
Norway	Imports	Total merchandise	World	77330	90784	87308	89816	89185
Sweden	Exports	Total merchandise	World	158549	186963	172345	167550	164374
Sweden	Imports	Total merchandise	World	148946	177026	164436	160609	162584

TECHNICAL NOTES

Value flags

- Break in series
- Coverage difference
- Estimated value

- Statistics Database
- Statistics gateway
- Contact Statistics
- Contact Tariffs



Reports

Actions [input type="text"] Search

Folders	Name ↑↓	Date (yyyy-mm-dd) ↑↓
International trade in goods and services	National accounts	
Economic trends	Balance of payments	
Foreign direct investment	Exchange rates	
External financial resources	Inflation rates	
Population and labour force		
Commodities		
Information economy		
Creative economy		
Maritime transport		

javascript:OnFolderClick('Expand','False','P,4,21');



Reports

Actions Search

Folders	Name	Date (yyyy-mm-dd)
International trade in goods and services	Gross domestic product: Total and per capita, current and constant (2005) prices, annual, 1970-2014	2015-08-04, 10:03:05
Economic trends	Gross domestic product: Total and per capita, growth rates, annual, 1970-2014	2015-08-04, 10:03:05
National accounts	Gross domestic product: GDP by type of expenditure, VA by kind of economic activity, total and shares, annual, 1970-2014	2015-08-04, 10:03:05
Balance of payments	Nominal GNI, total and per capita, annual, 1970-2012	2014-05-22, 15:34:43
Exchange rates		
Inflation rates		
Foreign direct investment		
External financial resources		
Population and labour force		
Commodities		
Information economy		
Creative economy		
Maritime transport		

javascript:OnReportClick(96,1,94119);



Item selection

Actions Show table

Gross domestic product: Total and per capita, current and constant (2005) prices, annual, 1970-2014

Table size
147 rows by 8 columns

COLUMNS:
YEAR

ROWS:
ECONOMY

Other:
MEASURE

Search Show all Show selected

Select range

- 1997
- 1998
- 1999
- 2000
- 2001
- 2002
- 2003
- 2004
- 2005
- 2006
- 2007
- 2008
- 2009
- 2010
- 2011
- 2012
- 2013
- 2014



Item selection

Gross domestic product: Total and per capita, current and constant (2005) prices, annual, 1970-2014

Table size: 147 rows by 8 columns

Search Show all Show selected

COLUMNS: YEAR

ROWS: ECONOMY

Other: MEASURE

Select range

- New Caledonia
- New Zealand
- Nicaragua
- Niger
- Nigeria
- Niue
- Northern Mariana Islands
- Norway
- Oman
- Pacific Islands, Trust Territory
- Pakistan
- Palau
- Panama
- Panama, Canal Zone
- Panama, excluding Canal Zone
- Papua New Guinea



Item selection

Actions Show table

Gross domestic product: Total and per capita, current and constant (2005) prices, annual, 1970-2014

Table size 146 rows by 45 columns Search Show all Show selected

COLUMNS: YEAR

ROWS: ECONOMY

Other: MEASURE

- South Sudan
- Spain
- Sri Lanka
- State of Palestine
- Sudan
- Sudan (...2011)
- Suriname
- Swaziland
- Sweden
- Switzerland
- Syrian Arab Republic
- Tajikistan
- Thailand
- TFYR of Macedonia
- Timor-Leste
- Togo



Item selection

Actions Show table

Gross domestic product: Total and per capita, current and constant (2005) prices, annual, 1970-2014

Table size
147 rows by 8 columns

COLUMNS:
YEAR

ROWS:
ECONOMY

Other:
MEASURE

Search Show all Show selected

Select range

- US Dollars at current prices and current exchange rates in millions
- US Dollars at current prices and current exchange rates per capita
- US Dollars at constant prices (2005) and constant exchange rates (2005) in millions
- US Dollars at constant prices (2005) and constant exchange rates (2005) per capita



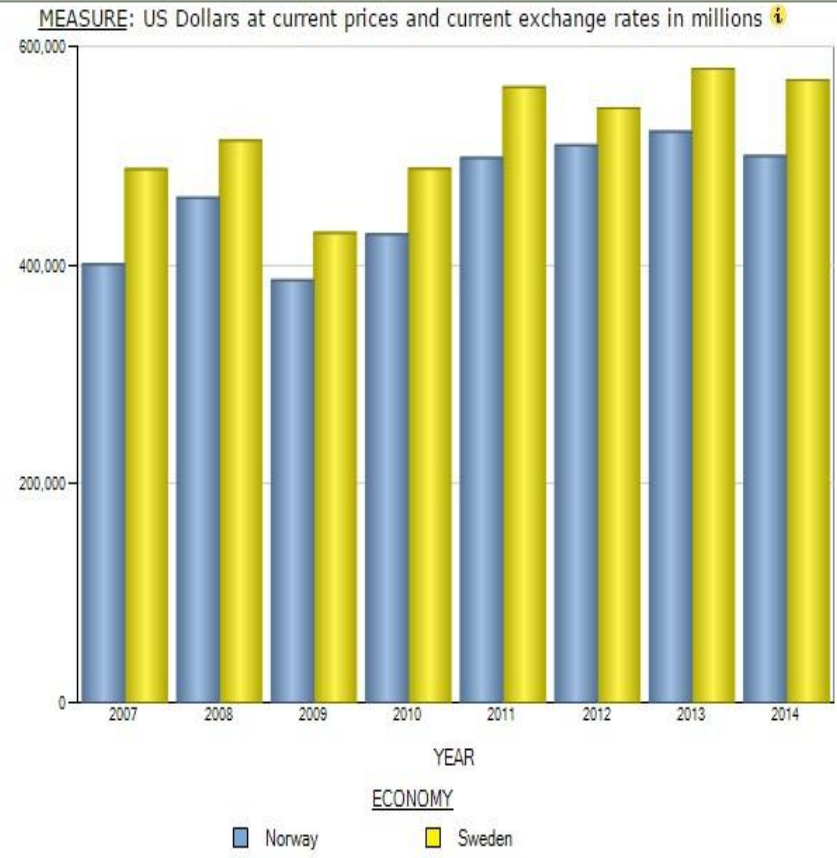
Gross domestic product: Total and per capita, current and constant (2005) prices, annual, 1970-2014

Other: MEASURE - US Dollars at current prices and current exchange rates in millions

YEAR	2007	2008	2009	2010	2011	2012	2013	2014
ECONOMY	↑↓	↑↓	↑↓	↑↓	↑↓	↑↓	↑↓	↑↓
Norway	400 886	461 947	386 382	428 527	498 157	509 705	522 349	500 081
Sweden	487 818	513 966	429 656	488 378	563 110	543 881	579 680	569 493



Gross domestic product: Total and per capita, current and constant (2005) prices, annual, 1970-2014



Экспортная квота, %

$$Эк = \frac{\text{Экспорт}}{\text{ВВП}} \times 100\%$$

Группа_A.xlsx - Microsoft Excel (Сбой активации продукта)

Файл Главная Вставка Разметка страницы Формулы Данные Рецензирование Вид

Calibri 11 Шрифт

Общий Число

Условное форматирование Форматировать как таблицу стилей Ячейки

Вставить Удалить Формат

Сортировка и фильтр Найти и выделить Редактирование

M76 =M71/C83

YEAR	2007	2008	2009	2010	2011	2012	2013	2014
Norway	400 886	461 947	386 382	428 527	498 157	509 705	522 349	500 081
Sweden	487 818	513 966	429 656	488 378	563 110	543 881	579 680	569 493

YEAR	2007	2008	2009	2010	2011	2012	2013	2014
Norway	136354	171764	116778	130657	160410	160952	154391	143893
Sweden	168817	183327	130781	158549	186963	172345	167550	164374
Norway	80297	90293	68970	77330	90784	87308	89816	89185
Sweden	153226	168503	119876	148946	177026	164436	160609	162584

YEAR	2007	2008	2009	2010	2011	2012	2013	2014
Norway	34,0131608	37,182621	30,2234576	30,4897941	32,2006917	31,5774811	29,5570586	28,773939
Sweden	34,6065541	35,669091	30,4385369	32,4644026	33,2018611	31,6879979	28,903878	28,863217

Экспортная квота, %

Эк=Экспорт/ВВП*100%

Экспортная квота, %

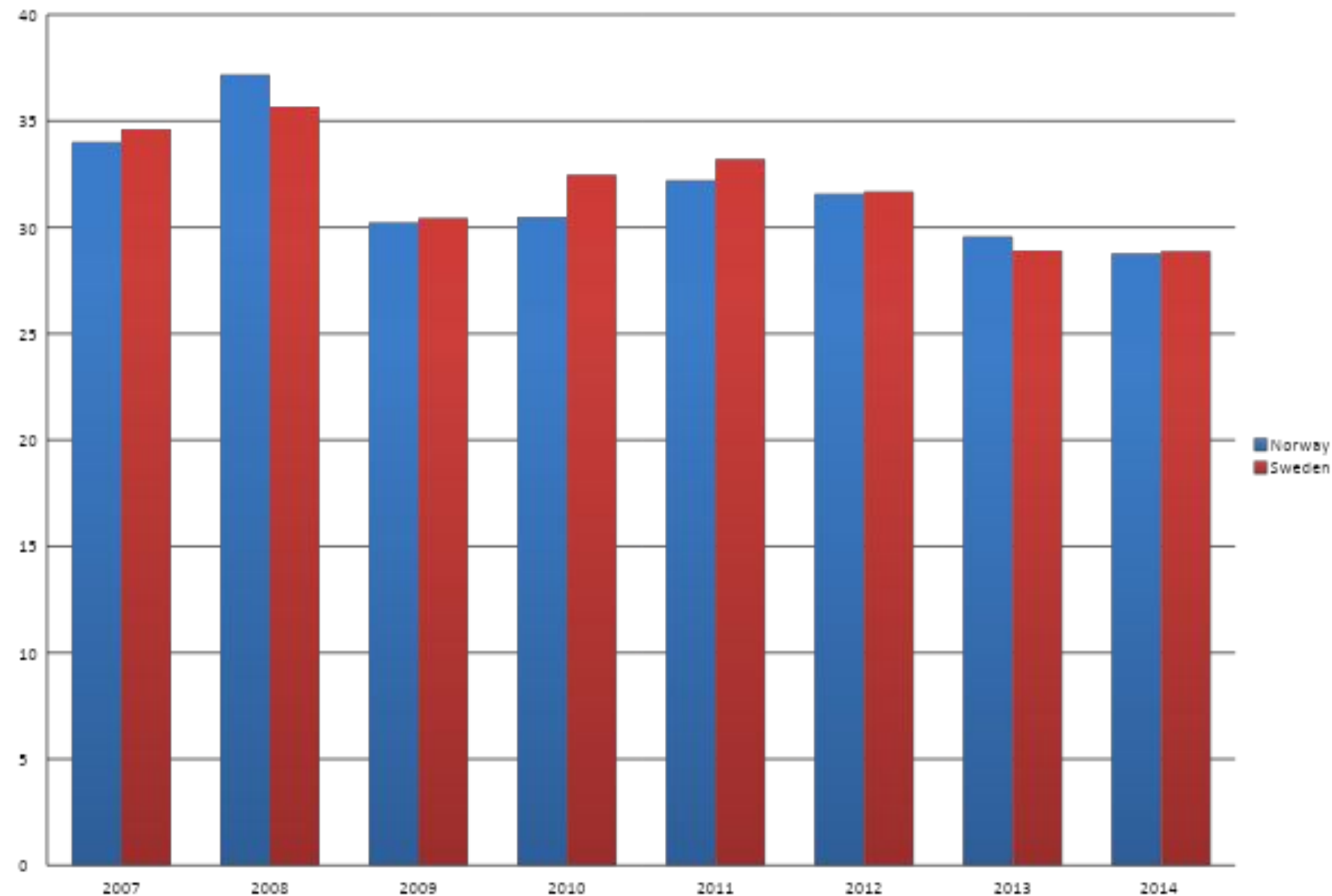
Лист1 Лист2 Лист3

Готово

100%

23:16 23.09.2015

Экспортная квота, %



Файл Главная Вставка Разметка страницы Формулы Данные Рецензирование Вид

Вставить Буфер обмена Шрифт Выравнивание Число Стили Ячейки Редактирование

Calibri 11 A⁺ A⁻ Перенос текста Общий Условное форматирование Форматировать как таблицу Стили ячеек Вставить Удалить Формат Σ Сортировка и фильтр Найти и выделить

Ж К Ч Объединить и поместить в центре % 000 0,00 0,00

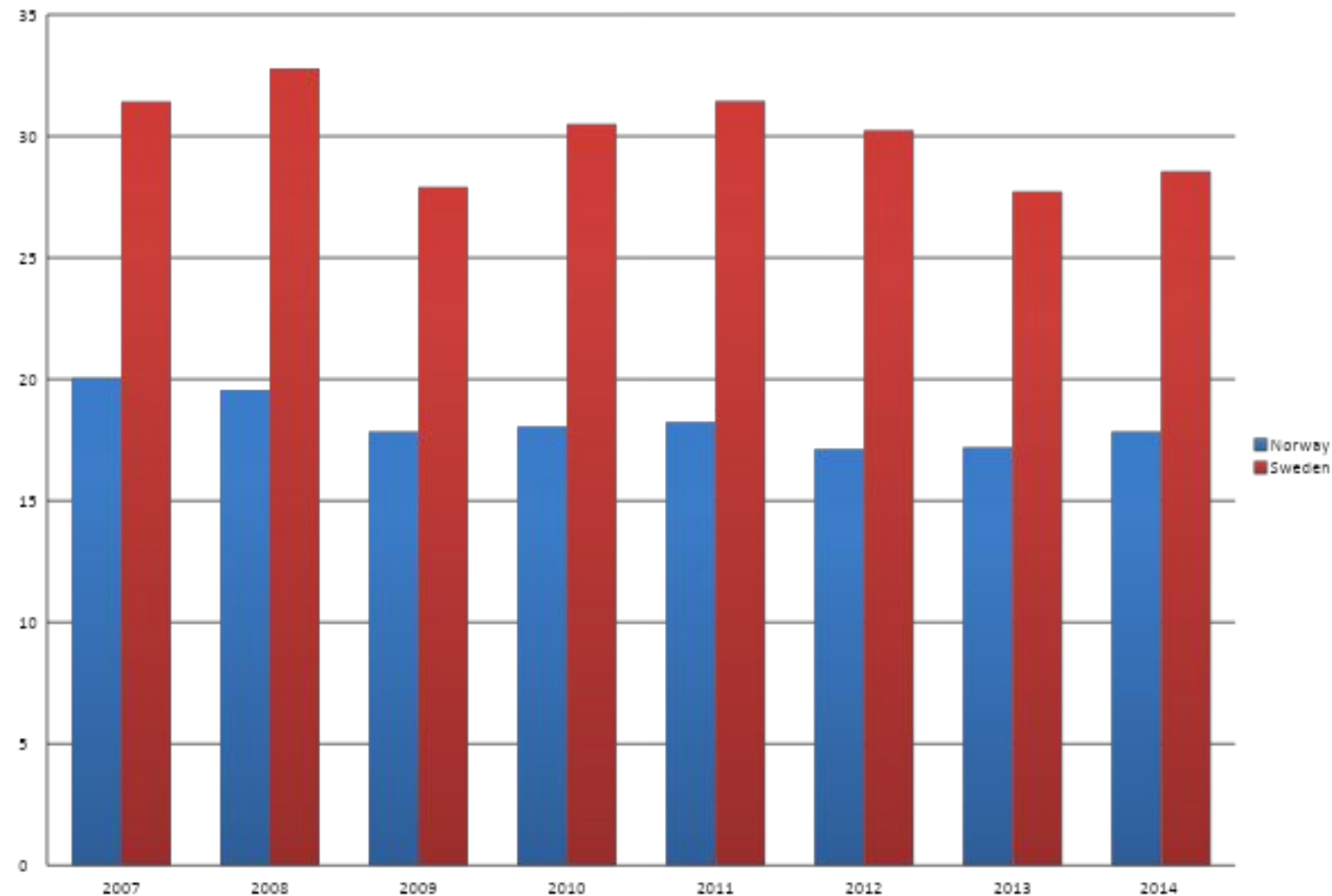
A43 fx Norway

	A	B	C	D	E	F	G	H	I	J	K	L
27												
28												
29												
30												
31												
32												
33												
34												
35												
36												
37												
38												
39												
40												

Импортная квота, %									
YEAR	2007	2008	2009	2010	2011	2012	2013	2014	
Norway	20,029884	19,54618	17,85021	18,045537	18,223974	17,129124	17,194634	17,83411	
Sweden	31,410485	32,78485	27,90046	30,498098	31,437197	30,23382	27,706493	28,5489	

Ик=Импорт/ВВП*100%

Импортная квота, %





Reports

Actions Search

Folders	Name	Date (yyyy-mm-dd)
International trade in goods and services	Consumer price indices, annual, 1980-2014	2015-06-18, 16:48:37
Economic trends		
National accounts		
Balance of payments		
Exchange rates		
Inflation rates		
Foreign direct investment		
External financial resources		
Population and labour force		
Commodities		
Information economy		
Creative economy		
Maritime transport		



Item selection

Actions Show table

Consumer price indices, annual, 1980-2014

Table size 95 rows by 9 columns Search Show all Show selected

COLUMNS: YEAR

ROWS: ECONOMY

Other: CPI ITEMS

MEASURE

- Select range
- 1997
 - 1998
 - 1999
 - 2000
 - 2001
 - 2002
 - 2003
 - 2004
 - 2005
 - 2006
 - 2007
 - 2008
 - 2009
 - 2010
 - 2011
 - 2012
 - 2013
 - 2014



Item selection

Actions Show table

Consumer price indices, annual, 1980-2014

Table size
3 rows by 8 columns

Search Show all Show selected

COLUMNS:
YEAR

ROWS:
ECONOMY

Other:
CPI ITEMS
MEASURE

Select range

- Norway
- Oman ⁱ
- Pakistan
- Panama
- Papua New Guinea
- Paraguay
- Peru
- Philippines ⁱ
- Poland
- Portugal
- Qatar ⁱ
- Republic of Moldova
- Romania
- Russian Federation
- Rwanda
- Saint Helena



Item selection

Actions Show table

Consumer price indices, annual, 1980-2014

Table size: 3 rows by 8 columns

Search Show all Show selected

COLUMNS:

- YEAR

ROWS:

- ECONOMY

Other:

- CPI ITEMS
- MEASURE

Select range

- Sudan
- Sudan (...2011)
- Suriname
- Swaziland
- Sweden
- Switzerland
- Syrian Arab Republic
- Tajikistan
- Thailand
- TFYR of Macedonia
- Timor-Leste
- Togo ⁱ
- Tonga
- Trinidad and Tobago
- Tunisia ⁱ
- Turkey



Consumer price indices, annual, 1980-2014

Other: CPI ITEMS - All items MEASURE - Annual average growth rate

YEAR	2007	2008	2009	2010	2011	2012	2013	2014
ECONOMY	↑↓	↑↓	↑↓	↑↓	↑↓	↑↓	↑↓	↑↓
Norway	0.73	3.77	2.17	2.40	1.30	0.71	2.13	2.02
Sweden	2.21	3.44	-0.49	1.16	2.96	0.89	-0.04	-0.18



Folders	Name	Date (yyyy-mm-dd)
International trade in goods and services	Gross domestic product: Total and per capita, current and constant (2005) prices, annual, 1970-2014	2015-08-04, 10:03:05
Economic trends	Gross domestic product: Total and per capita, growth rates, annual, 1970-2014	2015-08-04, 10:03:05
National accounts	Gross domestic product: GDP by type of expenditure, VA by kind of economic activity, total and shares, annual, 1970-2014	2015-08-04, 10:03:05
Balance of payments	Nominal GNI, total and per capita, annual, 1970-2012	2015-08-22, 10:10:43
Exchange rates		
Inflation rates		
Foreign direct investment		
External financial resources		
Population and labour force		
Commodities		
Information economy		
Creative economy		
Maritime transport		



Item selection

Actions Show table

Gross domestic product: Total and per capita, growth rates, annual, 1970-2014

Table size
2 rows by 7 columns

COLUMNS:
PERIOD

ROWS:
ECONOMY

Other:
MEASURE

Search Show all Show selected

Select range

- 1997
- 1998
- 1999
- 2000
- 2001
- 2002
- 2003
- 2004
- 2005
- 2006
- 2007
- 2008
- 2009
- 2010
- 2011
- 2012
- 2013
- 2014



Item selection

Actions Show table

Gross domestic product: Total and per capita, growth rates, annual, 1970-2014

Table size 2 rows by 7 columns
COLUMNS: PERIOD
ROWS: ECONOMY
Other: MEASURE

Search Show all Show selected

Select range
checkboxes for columns

- New Caledonia
New Zealand
Nicaragua
Niger
Nigeria
Niue
Northern Mariana Islands
Norway
Oman
Pacific Islands, Trust Territory
Pakistan
Palau
Panama
Panama, Canal Zone
Panama, excluding Canal Zone
Papua New Guinea



Item selection

Actions Show table

Gross domestic product: Total and per capita, growth rates, annual, 1970-2014

Table size
2 rows by 7 columns

COLUMNS:
PERIOD

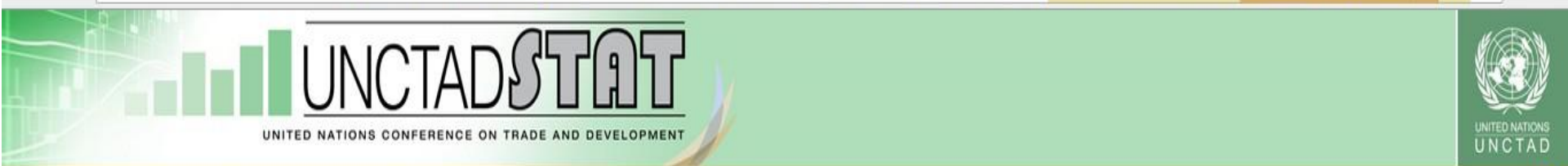
ROWS:
ECONOMY

Other:
MEASURE

Search Show all Show selected

Select range

- State of Palestine
- Sudan
- Sudan (...2011)
- Suriname
- Swaziland
- Sweden
- Switzerland
- Syrian Arab Republic
- Tajikistan
- Thailand
- TFYR of Macedonia
- Timor-Leste
- Togo
- Tokelau
- Tonga
- Trinidad and Tobago



Item selection

Actions Show table

Gross domestic product: Total and per capita, growth rates, annual, 1970-2014

Table size 2 rows by 7 columns Search Show all Show selected

COLUMNS: PERIOD

ROWS: ECONOMY

Other: MEASURE

- Select range
- Annual average growth rate
- Annual average growth rate per capita



Gross domestic product: Total and per capita, growth rates, annual, 1970-2014

Other: MEASURE - Annual average growth rate

PERIOD	2007	2008	2009	2010	2011	2012	2013
ECONOMY	↑↓	↑↓	↑↓	↑↓	↑↓	↑↓	↑↓
Norway	2.93	0.38	-1.62	0.60	0.97	2.75	0.74
Sweden	3.40	-0.56	-5.18	5.99	2.66	-0.29	1.50

H76 fx =0,7421587787+100

A B C D E F G H I J K L M N

64 Consumer price indices, annual, 1980-2014

$$PI_i = \frac{PI_i - PI_{i-1}}{PI_{i-1}} * K_{ин}$$

Реальный импорт в год, t

65 CPI ITEMS All items MEASURE Annual average growth rate

YEAR	2007	2008	2009
------	------	------	------

66 ECONOMY

Norway	79710,8	86889	67473,4
--------	---------	-------	---------

67 YEAR 2007 2008 2009 2010 2011 2012 2013

Sweden	149840	162706	120463
--------	--------	--------	--------

68 Norway 0,7 3,8 2,2 2,4 1,3 0,7 2,1

69 Sweden 2,2 3,4 -0,5 1,2 3,0 0,9 0,0

$$TI_i = \frac{PI_i}{PI_{(i-1)}} * 1$$

Темп роста импорта в

70

YEAR	2007	2008	2009
------	------	------	------

71

Norway	-	109,005	77,6547
--------	---	---------	---------

72 Gross domestic product Total and per capita, growth rates, annual, 1970-2014

Sweden	-	108,587	74,0372
--------	---	---------	---------

73 MEASURE Annual average growth rate

74 ECONOMY

$$K_{ори} = \frac{TI_i}{T_{впi}}$$

Коэффициент опережения темпами роста им

75 YEAR 2007 2008 2009 2010 2011 2012 2013

YEAR	2007	2008	2009
------	------	------	------

76 Norway 102,9 100,4 98,4 100,6 101,0 102,7 100,7

Norway	-	1,08588	0,78935
--------	---	---------	---------

77 Sweden 103,4 99,4 94,8 106,0 102,7 99,7 101,5

Sweden	-	1,09195	0,78086
--------	---	---------	---------

78

79

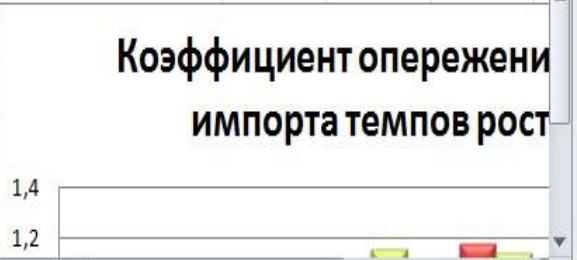
80 Total merchandise trade

81 MEASURE US dollar at current prices (Millions)

82 YEAR 2007 2008 2009 2010 2011 2012 2013

83 Norway 80297 90293 68970 77330 90784 87308 89816

84 Sweden 153226 168503 119876 148946 177026 164436 160609



Реальный импорт в год i ,

$$PI_i = NI_i - \frac{NI_i * K_{ИНФi}}{100\%}$$

Группа_A (1).xlsx [Защищенный просмотр] - Microsoft Excel (Сбой активации продукта)

Файл Главная Вставка Разметка страницы Формулы Данные Рецензирование Вид

L66 fx =B83-(B83*B68/100)

	I	J	K	L	M	N	O	P	Q	R	S	T
63												
64		$PI_i = NI_i - NI_i * K_{ИНФi}$	Реальный импорт в год, млн. долл.									
65			YEAR	2007	2008	2009	2010	2011	2012	2013		
66			Norway	79710,8	86889	67473,4	75474,1	89603,8	86688,1	87902,9		
67			Sweden	149840	162706	120463	147218	171786	162973	160673		
68												
69		$T_{ii} = PI_i / PI_{(i-1)} * 100$	Темп роста импорта в год, %									
70			YEAR	2007	2008	2009	2010	2011	2012	2013		
71			Norway	-	109,005	77,6547	111,858	118,721	96,746	101,401		
72			Sweden	-	108,587	74,0372	122,21	116,688	94,8695	98,5892		
73												
74		$K_{ОИ} = T_{ii} / T_{ВВП}$	Коэффициент опережения темпами роста импорта темпов роста ВВП в год									
75			YEAR	2007	2008	2009	2010	2011	2012	2013		
76			Norway	-	1,08588	0,78935	1,11188	1,17582	0,94158	1,00654		
77			Sweden	-	1,09195	0,78086	1,15304	1,1366	0,95142	0,97134		
78												

Лист1 Лист2 Лист3

Готово

145%

20:35
24.09.2015

Темп роста импорта в год i ,

$$T_{Иi} = \frac{РИ_i}{РИ_{i-1}} * 100\%$$

Группа_A (1).xlsx [Защищенный просмотр] - Microsoft Excel (Сбой активации продукта)

М71 fx =M66/L66*100

	I	J	K	L	M	N	O	P	Q	R	S	T
63												
64		РИ _i =НИ _i -НИ _{i-1} *К _{ни}	Реальный импорт в год, млн. долл.									
65			YEAR	2007	2008	2009	2010	2011	2012	2013		
66			Norway	79710,8	86889	67473,4	75474,1	89603,8	86688,1	87902,9		
67			Sweden	149840	162706	120463	147218	171786	162973	160673		
68												
69		Т _и =РИ _i /РИ _(i-1) *100	Темп роста импорта в год, %									
70			YEAR	2007	2008	2009	2010	2011	2012	2013		
71			Norway	-	109,005	77,6547	111,858	118,721	96,746	101,401		
72			Sweden	-	108,587	74,0372	122,21	116,688	94,8695	98,5892		
73												
74		К _{ори} =Т _и /Т _{ввп}	Коэффициент опережения темпами роста импорта темпов роста ВВП в год									
75			YEAR	2007	2008	2009	2010	2011	2012	2013		
76			Norway	-	1,08588	0,78935	1,11188	1,17582	0,94158	1,00654		
77			Sweden	-	1,09195	0,78086	1,15304	1,1366	0,95142	0,97134		
78												

Лист1 Лист2 Лист3

Готово 145% 20:35 24.09.2015

Коэффициент опережения темпами роста импорта темпов роста ВВП в год i

$$K_{ОРИi} = \frac{T_{Иi}}{T_{ВВПi}}$$

Группа_A (1).xlsx [Защищенный просмотр] - Microsoft Excel (Сбой активации продукта)

М76 fx =M71/C76

	I	J	K	L	M	N	O	P	Q	R	S	T
63												
64		РИ _i =И _{иi} -И _{иi-1} *К _{ини}	Реальный импорт в год, млн. долл.									
65			YEAR	2007	2008	2009	2010	2011	2012	2013		
66			Norway	79710,8	86889	67473,4	75474,1	89603,8	86688,1	87902,9		
67			Sweden	149840	162706	120463	147218	171786	162973	160673		
68												
69		Т _{иi} =РИ _i /РИ _(i-1) *100	Темп роста импорта в год, %									
70			YEAR	2007	2008	2009	2010	2011	2012	2013		
71			Norway	-	109,005	77,6547	111,858	118,721	96,746	101,401		
72			Sweden	-	108,587	74,0372	122,21	116,688	94,8695	98,5892		
73												
74		К _{ОРИi} =Т _{иi} /Т _{ВВПi}	Коэффициент опережения темпами роста импорта темпов роста ВВП в год									
75			YEAR	2007	2008	2009	2010	2011	2012	2013		
76			Norway	-	1,08588	0,78935	1,11188	1,17582	0,94158	1,00654		
77			Sweden	-	1,09195	0,78086	1,15304	1,1366	0,95142	0,97134		
78												

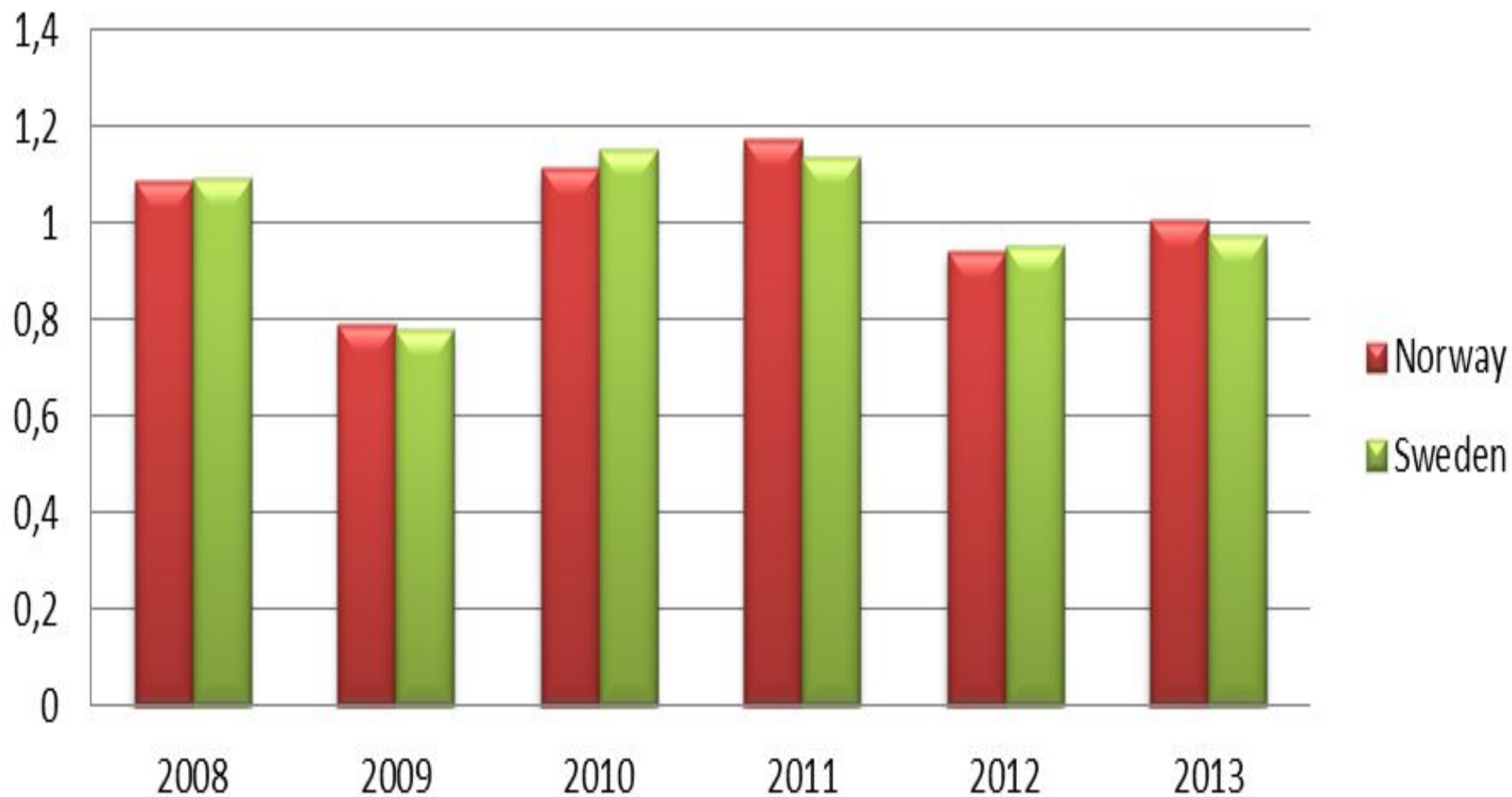
Лист1 Лист2 Лист3

Готово

145%

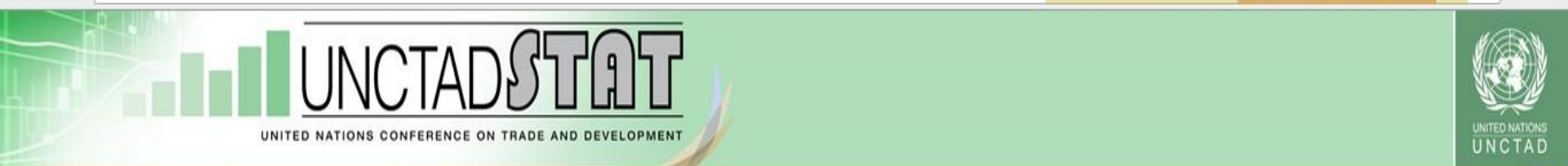
20:35
24.09.2015

Коэффициент опережения темпами роста импорта темпов роста ВВП в год i



Расчет показателей группы Б

Место международного региона в системе внешнеэкономических связей отдельных стран с учетом экспортных операций за 2014, 2013, 2012 года.



Folders	Name	Date (yyyy-mm-dd)
International trade in goods and services	Merchandise: Intra-trade and extra-trade of country groups by product, annual, 1995-2014	2015-08-04, 10:45:36
Trade trends	Merchandise: Trade matrix by products, exports in thousands of dollars, annual, 1995-2014	2015-07-09, 11:00:00
Trade structure by partner, product	Merchandise: Trade matrix by products, imports in thousands of dollars, annual, 1995-2014	2015-07-09, 11:00:00
Trade indicators	Merchandise: Trade matrix by product groups, exports in thousands of dollars, annual, 1995-2014	2015-07-09, 11:00:00
Market access	Merchandise: Trade matrix by product groups, imports in thousands of dollars, annual, 1995-2014	2015-07-09, 11:00:00
Economic trends	Services (BPM5): Exports and imports by service-category, value, shares and growth, annual, 1980-2013	2014-08-05, 15:00:00
National accounts	Services (BPM6): Exports and imports by service-category, shares and growth, annual, 2005-2014	2015-09-21, 09:53:58
Balance of payments		
Exchange rates		
Inflation rates		
Foreign direct investment		
External financial resources		
Population and labour force		
Commodities		
Information economy		
Creative economy		
Maritime transport		



Item selection

Actions Show table

Merchandise: Trade matrix by products, exports in thousands of dollars, annual, 1995-2014

Table size 256 rows by 4 columns Search Show all Show selected

COLUMNS: YEAR

ROWS: PRODUCT

Other: ECONOMY PARTNER

- Select range
- 1997
- 1998
- 1999
- 2000
- 2001
- 2002
- 2003
- 2004
- 2005
- 2006
- 2007
- 2008
- 2009
- 2010
- 2011
- 2012
- 2013
- 2014



Item selection

Actions Show table

Merchandise: Trade matrix by products, exports in thousands of dollars, annual, 1995-2014

Table size 2 rows by 3 columns Search Show all Show selected

COLUMNS: YEAR

ROWS: PRODUCT

Other: ECONOMY PARTNER

- [TOTAL] Total all products
- [001] Live animals other than animals of division 03
- [011] Meat of bovine animals, fresh, chilled or frozen
- [012] Other meat and edible meat offal
- [016] Meat, edible meat offal, salted, dried; flours, meals
- [017] Meat, edible meat offal, prepared, preserved, n.e.s.
- [022] Milk, cream and milk products (excluding butter, cheese)
- [023] Butter and other fats and oils derived from milk
- [024] Cheese and curd
- [025] Birds' eggs, and eggs' yolks; egg albumin
- [034] Fish, fresh (live or dead), chilled or frozen
- [035] Fish, dried, salted or in brine; smoked fish
- [036] Crustaceans, mollusks and aquatic invertebrates
- [037] Fish, aqua. invertebrates, prepared, preserved, n.e.s.
- [041] Wheat (including spelt) and meslin, unmilled
- [042] Rice
- [043] Barley, unmilled
- [044] Maize (not including sweet corn), unmilled



Merchandise: Trade matrix by products, exports in thousands of dollars, annual, 1995-2014

Other: ECONOMY - Sweden PARTNER - Norway

YEAR	2012	2013	2014
PRODUCT	↑↓	↑↓	↑↓
[TOTAL] Total all products	17 546 280	17 670 724	17 042 046



Reports Table Chart

Actions

Merchandise: Trade matrix by products, exports in thousands of dollars, annual, 1995-2014

Other:

YEAR	2012	2013	2014
PRODUCT	↑↓	↑↓	↑↓
[TOTAL] Total all products	10 204 866	8 995 593	8 152 782

Файл Главная Вставка Разметка страницы Формулы Данные Рецензирование Вид

Вставить Буфер обмена Шрифт Выравнивание Число Общий Условное форматирование Стили Ячейки Сортировка и фильтр Найти и выделить

C56 fx

	A	B	C	D	E	F	G	H
1	Merchandise: Trade matrix by products, exports in thousands of dollars, annual, 1995-2014							
2	ECONOMY Sweden		PARTNER Norway					
3	YEAR	2012	2013	2014				
4	PRODUCT [TOTAL] Total all products	17546279,6	17670723,61	17042046,37				
5								
6								
7	Merchandise: Trade matrix by products, exports in thousands of dollars, annual, 1995-2014							
8	ECONOMY Norway		PARTNER Sweden					
9	YEAR	2012	2013	2014				
10	PRODUCT [TOTAL] Total all products	10204865,7	8995592,708	8152781,746				
11								
12								
13	Взаимный экспорт двух стран, тыс. долл. $V = \text{Экспорт}_N + \text{Экспорт}_M$							
14	Merchandise: Trade matrix by products, exports in thousands of dollars, annual, 1995-2014							
15	ECONOMY Sweden and Norway							

$$V_{ЭНМ} = \text{Экспорт}_N + \text{Экспорт}_M$$

Доля э
в:
ме:

Взаимный экспорт двух стран, тыс. долл.

$$V_{ЭНМ} = \text{Экспорт}N + \text{Экспорт}M$$

долл.

Группа В.xlsx - Microsoft Excel (Сбой активации продукта)

Файл Главная Вставка Разметка страниц Формулы Данные Рецензирование Вид

Calibri 11 Шрифт

Буфер обмена Шрифт Выравнивание Число

Общий % 000

Условное форматирование Форматировать как таблицу Стили

Вставить Удалить Формат Ячейки

Сортировка и фильтр Найти и выделить Редактирование

C56 fx

	A	B	C	D	E	F	G
11							
12							
13	Взаимный экспорт двух стран, тыс. долл. $V = \text{Экспорт}N + \text{Экспорт}M$						
14	Merchandise: Trade matrix by products, exports in thousands of dollars, annual, 1995-2014						
15	ECONOMY Sweden and Norway						
16	YEAR	2012	2013	2014			
17	PRODUCT [TOTAL] Total all products	27751145,3	26666316,32	25194828,11			
18							
19							
20	Доля экспорта отдельной страны во взаимном экспорте стран международного региона, %						
21	YEAR	2012	2013	2014			
22	Norway	63,22722689	66,26608414	67,64105034			
23	Sweden	36,77277311	33,73391586	32,35894966			
24							
25							
26	Total merchandise trade						
27	MEASURED US Dollars at current prices in millions						

$V_{ЭНМ} = \text{Экспорт}N + \text{Экспорт}M$

$K = \frac{\text{Экспорт}N}{V_{ЭНМ}} * 100\%$

Лист1 Лист2 Лист3

Готово 145%

Доля экспорта отдельной страны во взаимном экспорте стран международного региона, %

$$K = \frac{\text{Экспорт}N}{V_{ЭНМ}} * 100\%$$

Screenshot of Microsoft Excel showing a trade matrix and a calculation of the export share percentage.

Excel Interface: Groupa_V.xlsx - Microsoft Excel (Сбой активации продукта)

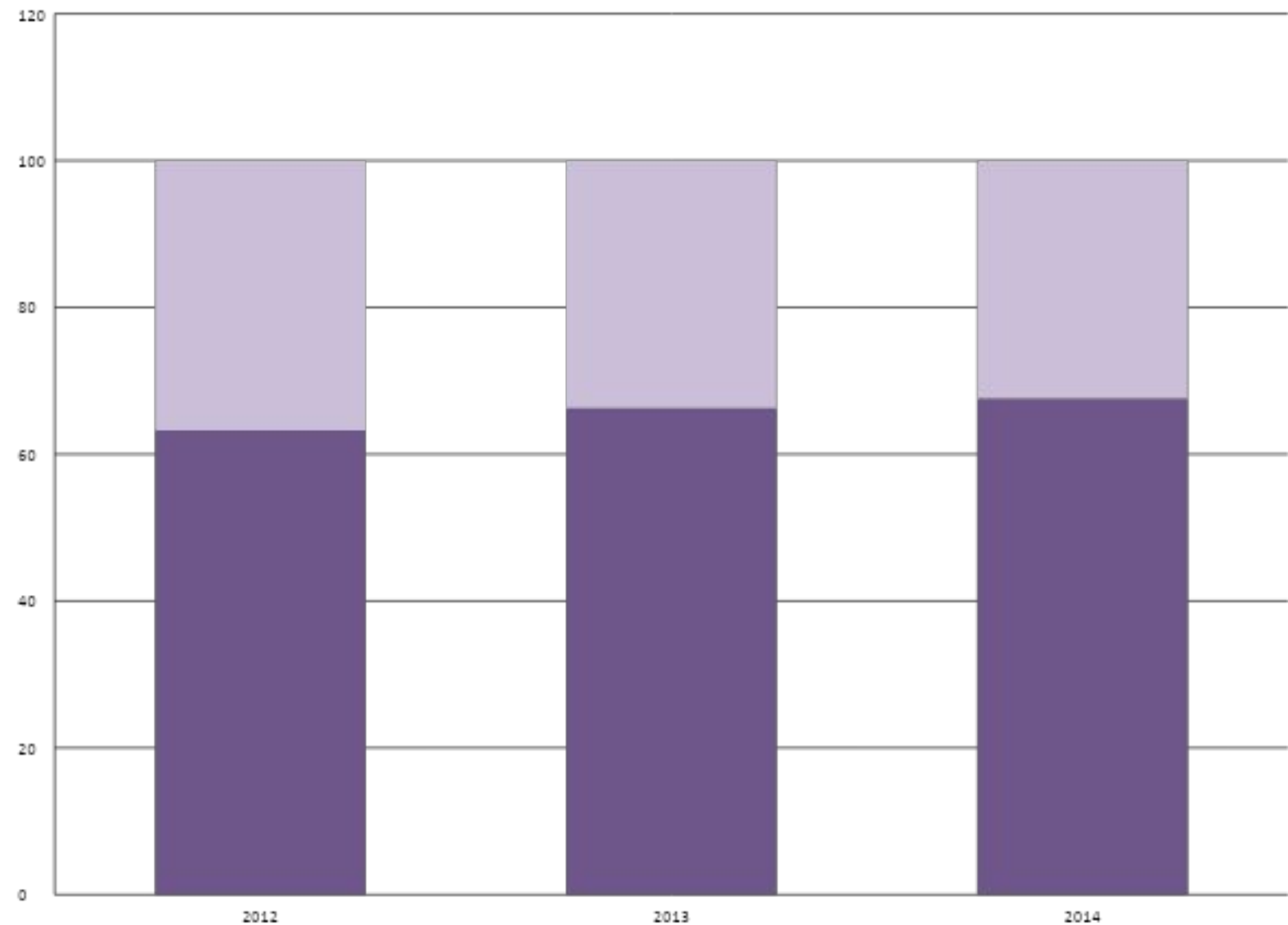
Formulas:

- Row 13: $V = \text{Экспорт}N + \text{Экспорт}M$
- Row 14: $V_{ЭНМ} = \text{Экспорт}N + \text{Экспорт}M$
- Row 20: $K = \frac{\text{Экспорт}N}{V_{ЭНМ}} * 100\%$

Table Data:

ECONOMY Sweden and Norway				
YEAR	2012	2013	2014	
PRODUCT [TOTAL] Total all products	27751145,3	26666316,32	25194828,11	
Доля экспорта отдельной страны во взаимном экспорте стран международного региона, %				
YEAR	2012	2013	2014	
Norway	63,22722689	66,26608414	67,64105034	
Sweden	36,77277311	33,73391586	32,35894966	
Total merchandise trade				
MEASURED US Dollars at current prices in millions				

Доля экспорта отдельной страны во взаимном экспорте стран международного региона, %



Файл Главная Вставка Разметка страницы Формулы Данные Рецензирование Вид

Вставить Буфер обмена Шрифт Выравнивание Число Общий Условное форматирование Стили Ячейки Сортировка и фильтр Найти и выделить

	A	B	C	D	E	F	G
23	Sweden	36,77277311	33,73391586	32,35894966			
24							
25							
26	Total merchandise trade						
27	MEASURED US Dollars at current prices in millions						
28	YEAR	2012	2013	2014			
29	Norway	160952	154391	143893	Exports		
30	Sweden	172345	167550	164374			
31	Norway	87308	89816	89185	Imports		
32	Sweden	164436	160609	162584			
33							
34							
35	Внешнеторговый оборот, млн. долл.					ВТО=Э+И	
36	YEAR	2012	2013	2014			
37	Norway	248260	244207	233078			
38	Sweden	336781	328159	326958			
39							

Внешнеторговый оборот, млн. долл.

$$ВТО = Э + И$$

долл.

Группа В.xlsx - Microsoft Excel (Сбой активации продукта)

Файл Главная Вставка Разметка границ Формулы Данные Рецензирование Вид

Calibri 11 Шрифт

Общий Число

Условное форматирование Форматировать как таблицу стилей

Вставить Удалить Формат Ячейки

Сортировка и фильтр Найти и выделить Редактирование

C56 fx

	A	B	C	D	E	F	G
35	Внешнеторговый оборот, млн. долл.					ВТО=Э+И	
36	YEAR	2012	2013	2014			
37	Norway	248260	244207	233078			
38	Sweden	336781	328159	326958			
39							
40							
41	Внешнеторговое сальдо, млн. долл.					ВТС=Э-И	
42	YEAR	2012	2013	2014			
43	Norway	73644	64575	54708			
44	Sweden	7909	6941	1790			
45							
46							
47	Коэффициент внутриотраслевой международной специализации, %					$KMC = \frac{ВТС}{ВТО} * 100\%$	
48	YEAR	2012	2013	2014			
49	Norway	29,66406187	26,44273096	23,47197076			
50	Sweden	2,348410391	2,115133213	0,547470929			
51							

Лист1 Лист2 Лист3

Готово 145%

22:37 23.09.2015

Внешнеторговое сальдо, млн. долл.

$$BTC = Э - И$$

Группа В.xlsx - Microsoft Excel (Сбой активации продукта)

Файл Главная Вставка Разметка страницы Формулы Данные Рецензирование Вид

Calibri 11 Шрифт

Выравнивание

Число

Условное форматирование

Форматировать как таблицу

Стили ячеек

Вставить Удалить Формат Ячейки

Сортировка и фильтр Найти и выделить Редактирование

C56

	A	B	C	D	E	F	G
35	Внешнеторговый оборот, млн. долл.					ВТО=Э+И	
36	YEAR	2012	2013	2014			
37	Norway	248260	244207	233078			
38	Sweden	336781	328159	326958			
39							
40							
41	Внешнеторговое сальдо, млн. долл.					BTC=Э-И	
42	YEAR	2012	2013	2014			
43	Norway	73644	64575	54708			
44	Sweden	7909	6941	1790			
45							
46							
47	Коэффициент внутриотраслевой международной специализации, %					$KMC = \frac{BTC}{ВТО} * 100\%$	
48	YEAR	2012	2013	2014			
49	Norway	29,66406187	26,44273096	23,47197076			
50	Sweden	2,348410391	2,115133213	0,547470929			
51							

Лист1 Лист2 Лист3

Готово

145%

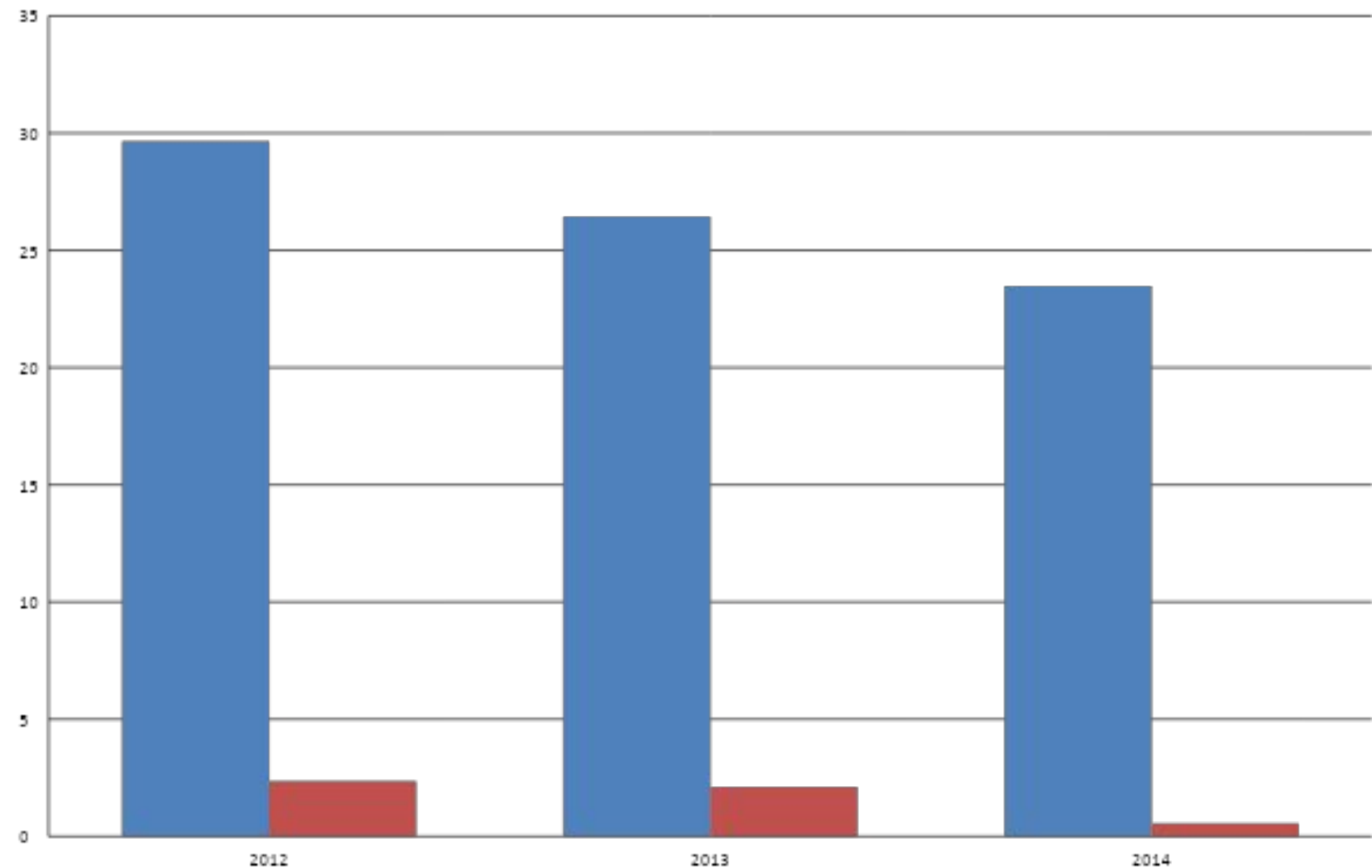
22:37 23.09.2015

Коэффициент внутриотраслевой международной специализации, %

$$KMC = \frac{BTC}{BTO} * 100\%$$

	A	B	C	D	E	F	G
35	Внешнеторговый оборот, млн. долл.					BTO=Э+И	
36	YEAR	2012	2013	2014			
37	Norway	248260	244207	233078			
38	Sweden	336781	328159	326958			
41	Внешнеторговое сальдо, млн. долл.					BTC=Э-И	
42	YEAR	2012	2013	2014			
43	Norway	73644	64575	54708			
44	Sweden	7909	6941	1790			
47	Коэффициент внутриотраслевой международной специализации, %					KMC = $\frac{BTC}{BTO} * 100\%$	
48	YEAR	2012	2013	2014			
49	Norway	29,66406187	26,44273096	23,47197076			
50	Sweden	2,348410391	2,115133213	0,547470929			

Коэффициент внутриотраслевой международной специализации, %



Выводы

На основании всего вышеизложенного, можно заключить, что в рассмотренном промежутке времени экономика Швеции несколько больше вовлечена в МРТ, нежели экономика Норвегии. При этом стоит отметить очевидную тенденцию "разворачивания" норвежской экономики в области международных торговых отношений, которая, наиболее вероятно, позволит приравнять значение этих стран в МРТ в ближайшей перспективе.