

# Где звук живёт?

Составила Деева О.И.  
воспитатель  
МДОУ № 460  
г. Челябинск



# Где чья схема?

А



О



У



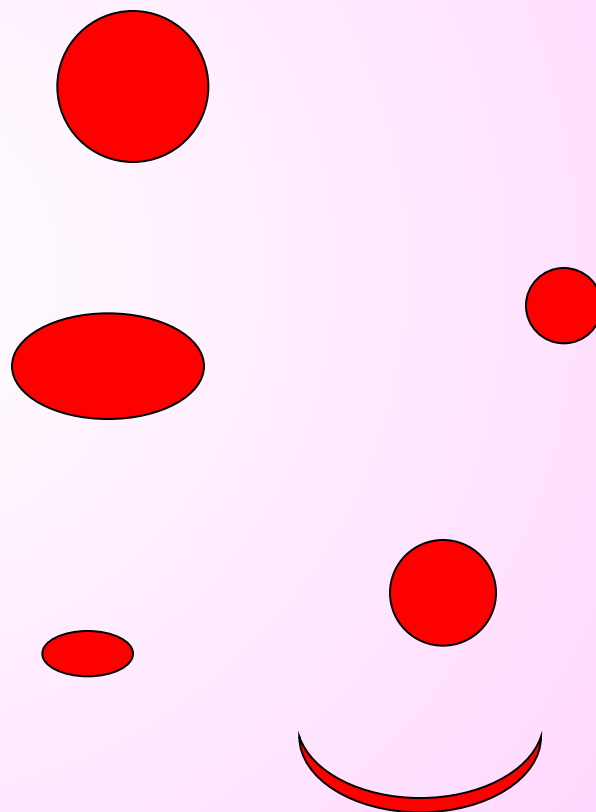
И



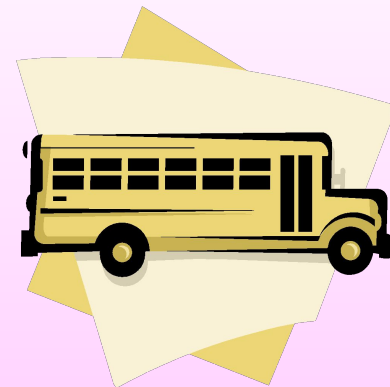
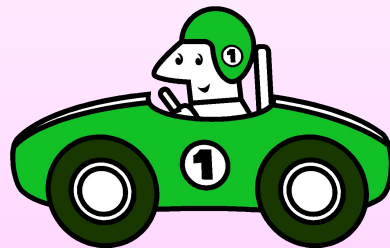
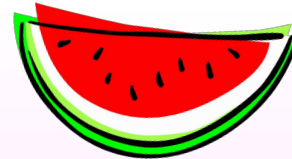
Э



Ы

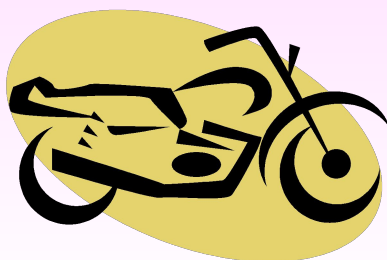
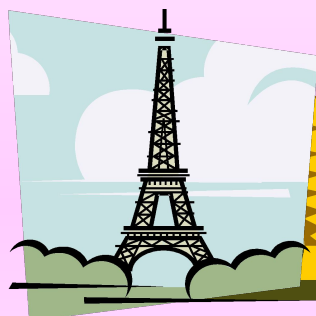
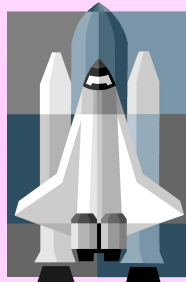
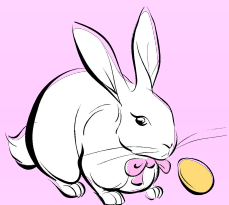
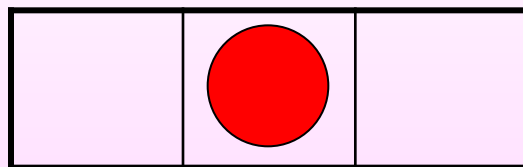
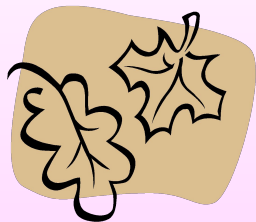


# A



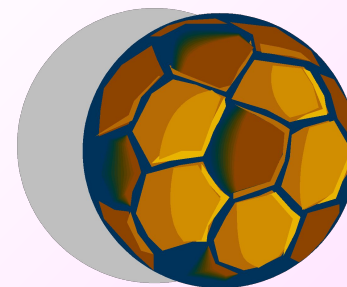
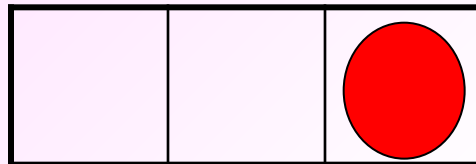
Найди слова со звуком **A** в начале.

**A**



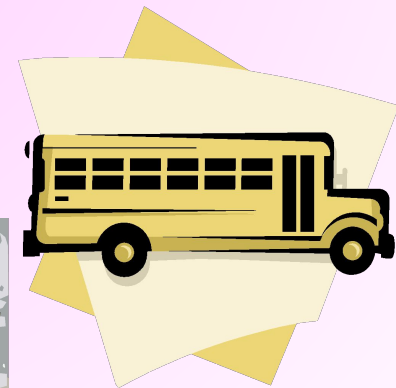
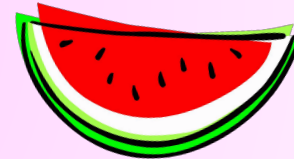
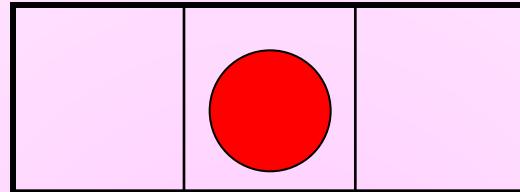
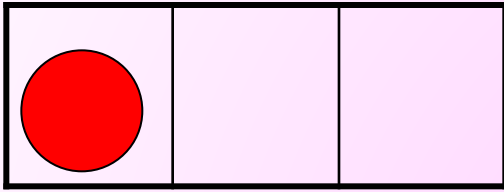
Найди слова со звуком **A** в середине.

**A**



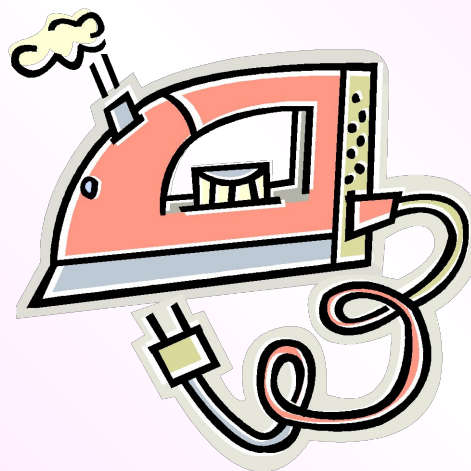
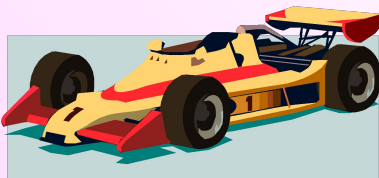
Найди слова со звуком **A** в конце.

# Кто где живёт?

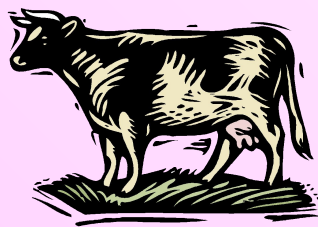
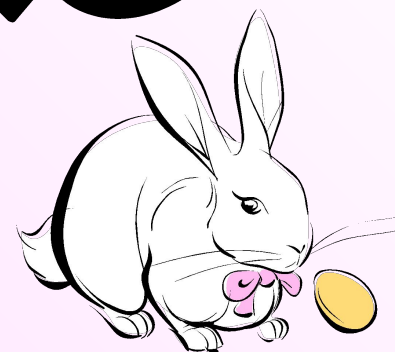
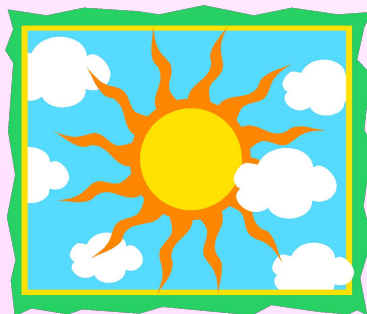
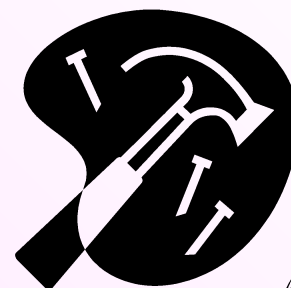
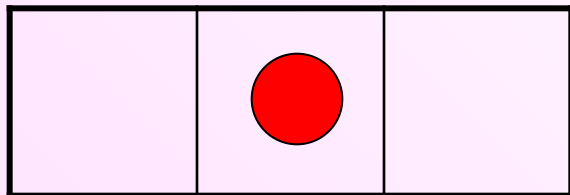


О

●		
---	--	--



Найди слова со звуком **О** в начале.

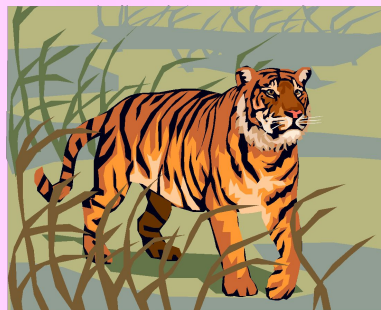
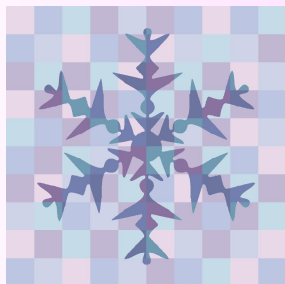


Найди слова со звуком **О** в середине.



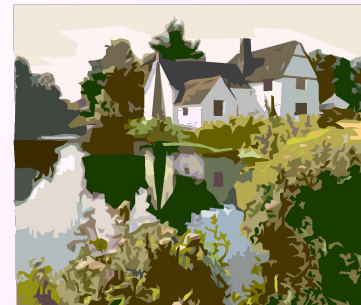
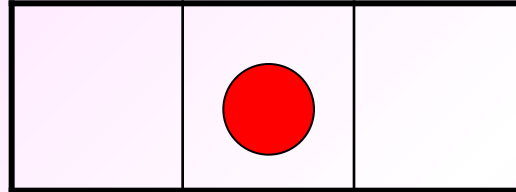
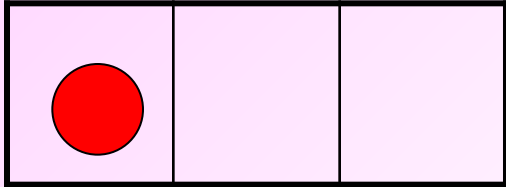


О

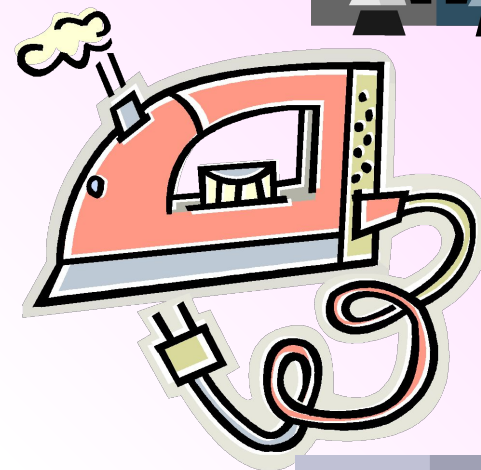
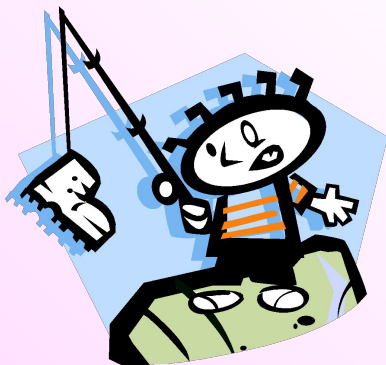
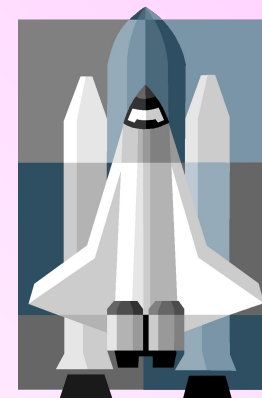
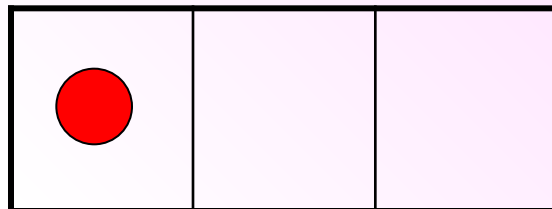
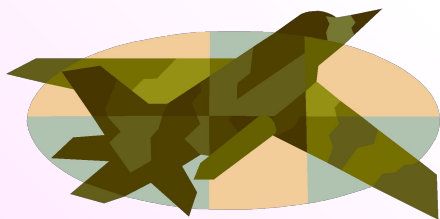


Найди слова со звуком **О** в конце.

# Кто где живёт?

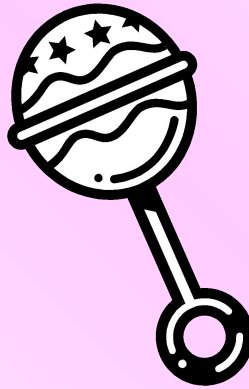
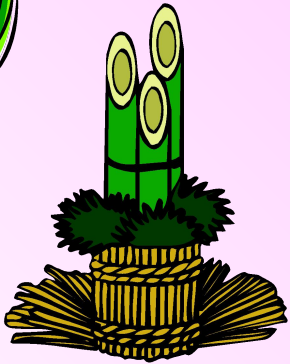
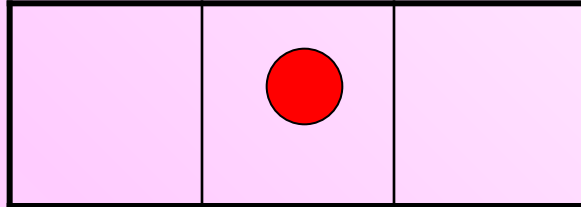


у



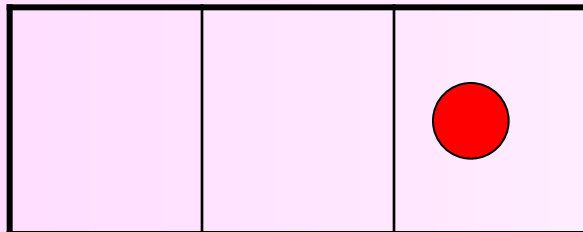
Найди слова со звуком **У** в начале.

у

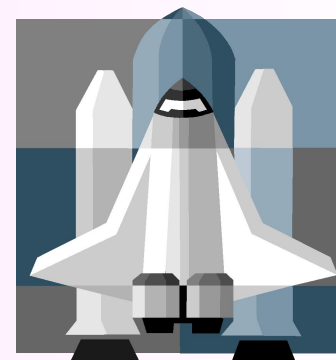


Найди слова со звуком **У** в середине.

у

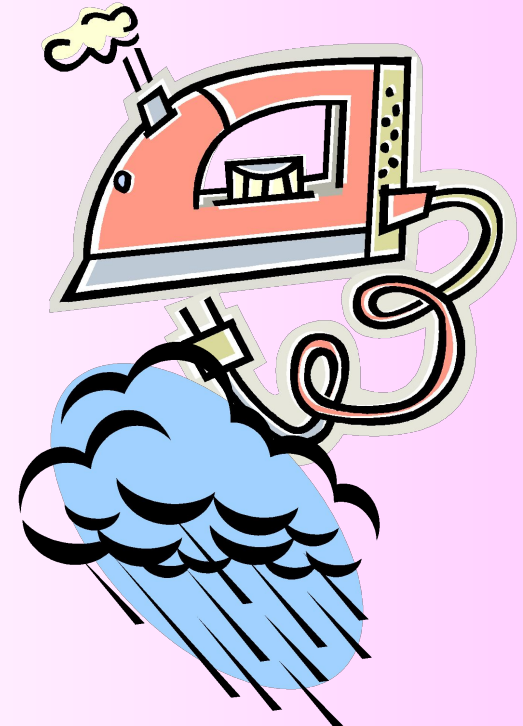
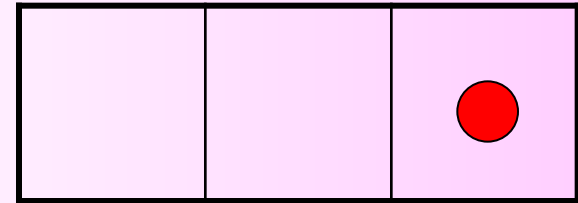
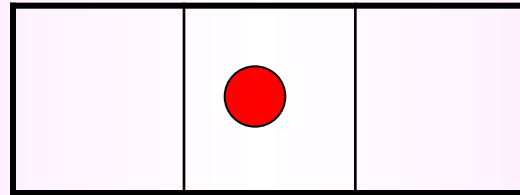
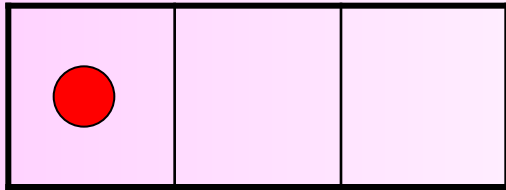


- Марабу  
(птица семейства журавлей)

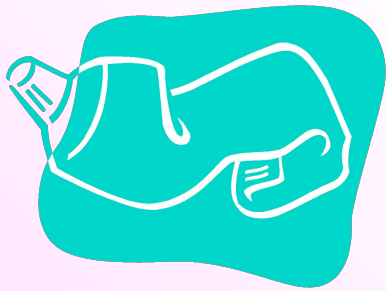
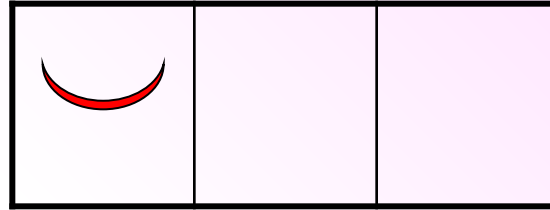


Найди слова со звуком **У** в конце.

# Кто где живёт?

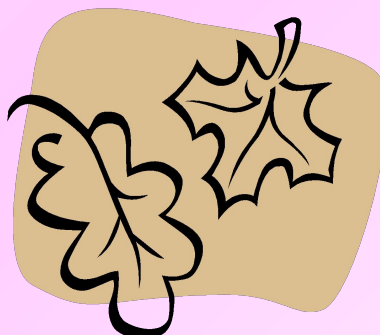
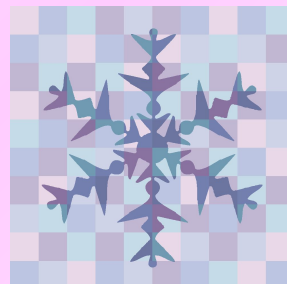
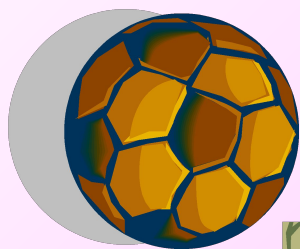
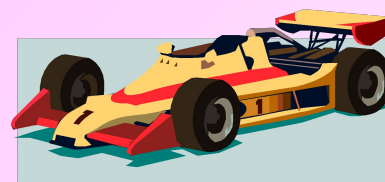
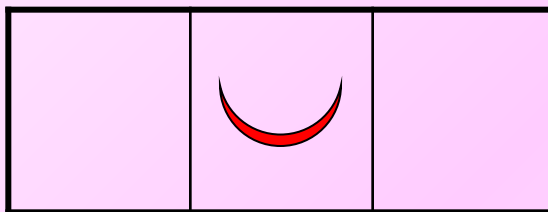


И



Найди слова со звуком **И** в начале.

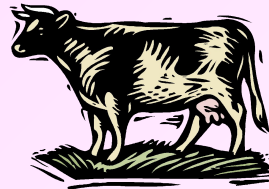
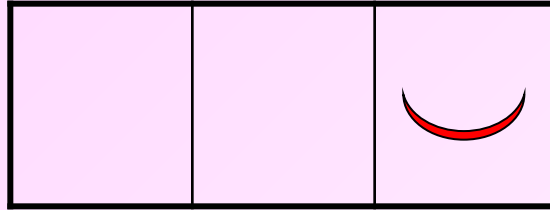
# И



Найди слова со звуком **И** в середине.

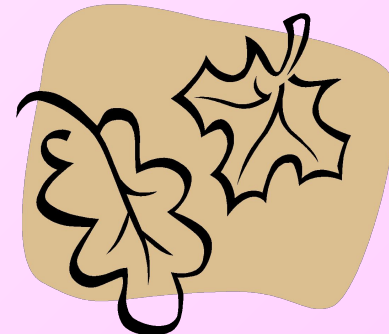
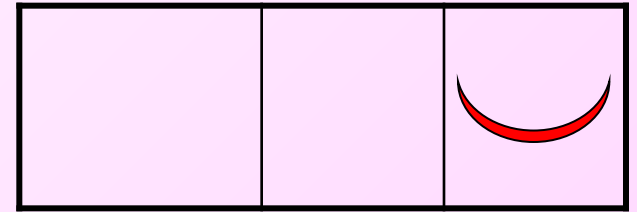
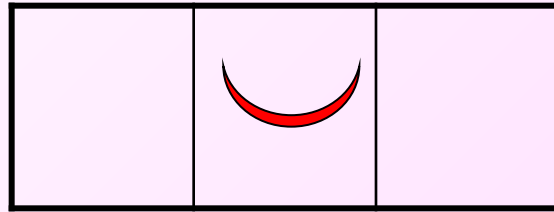
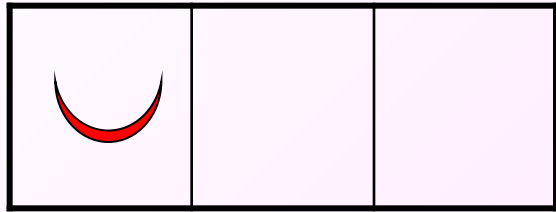


И



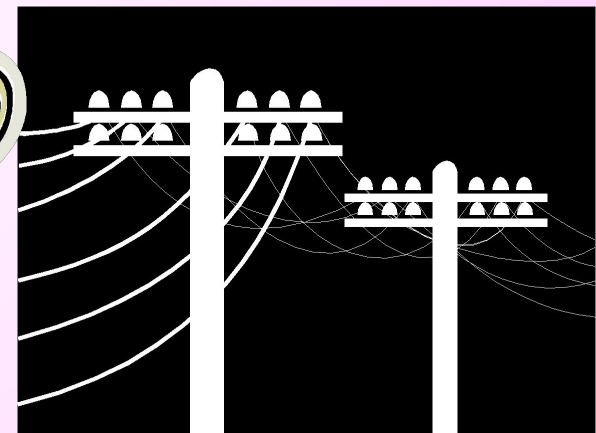
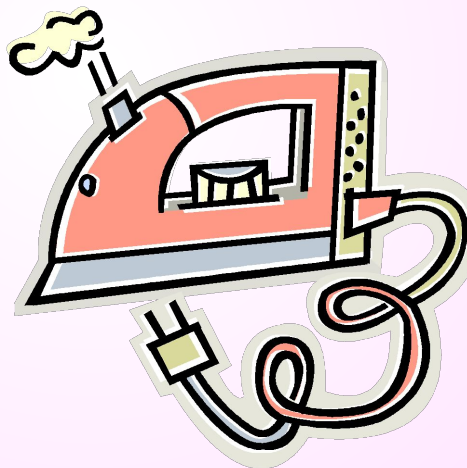
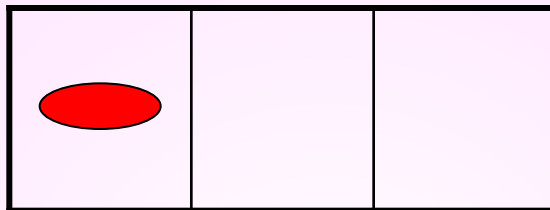
Найди слова со звуком **И** в конце.

# Кто где живёт?



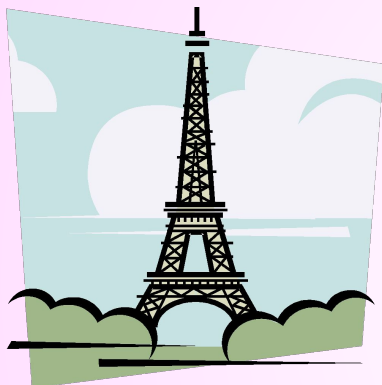
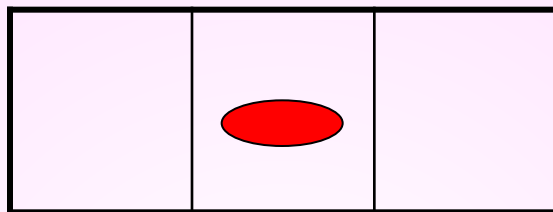


Э



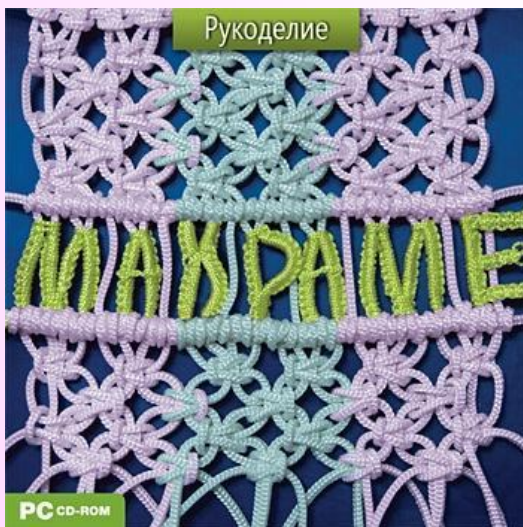
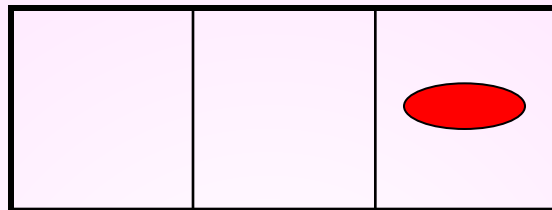
Найди слова со звуком Э в начале.

Э



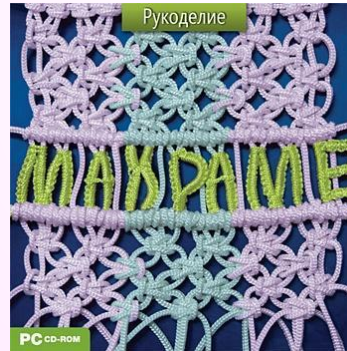
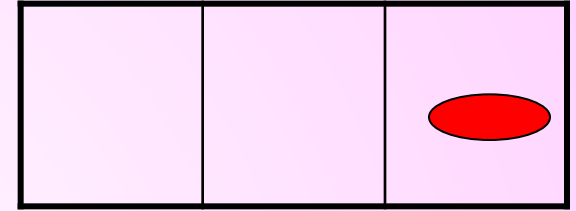
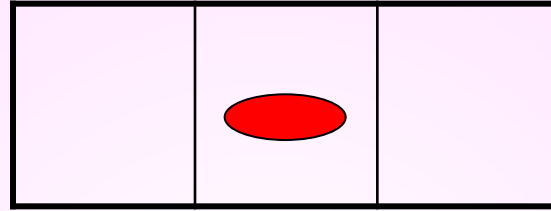
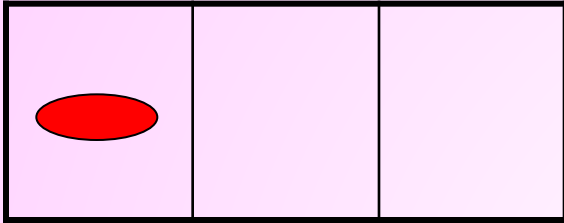
Найди слова со звуком **э** в середине.

Э

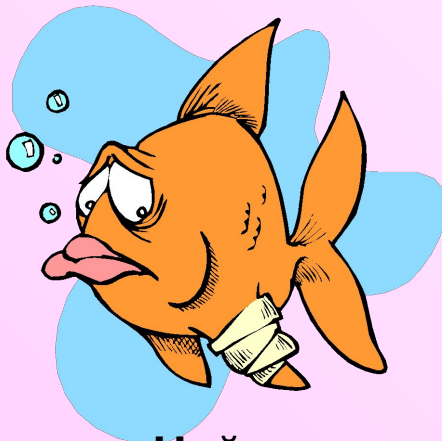
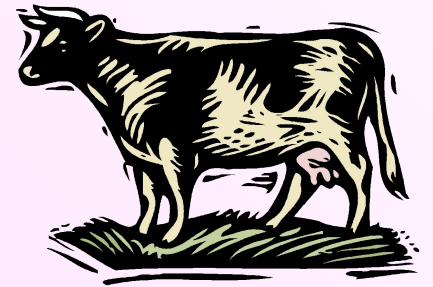
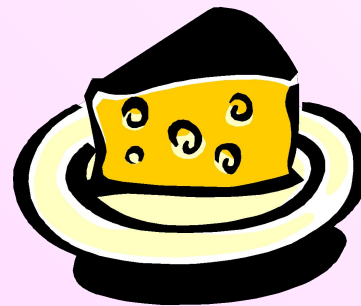
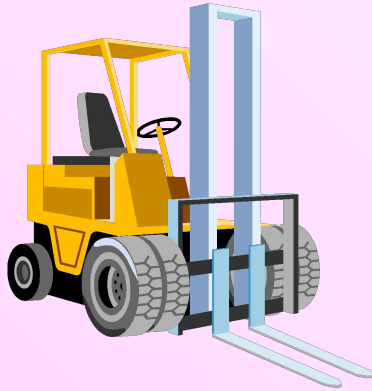
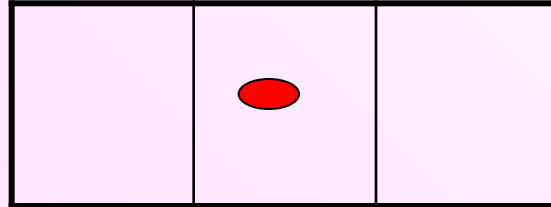


Найди слова со звуком Э в конце.

# Кто где живёт?

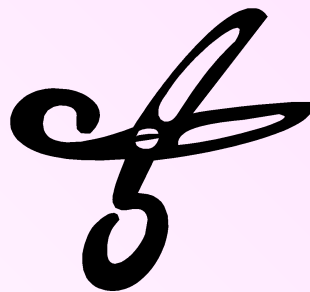
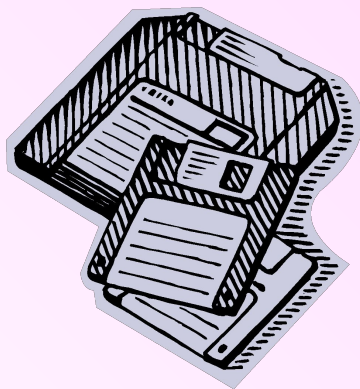
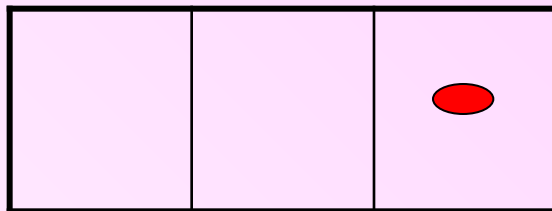


Ы



Найди слова со звуком **Ы** в середине.

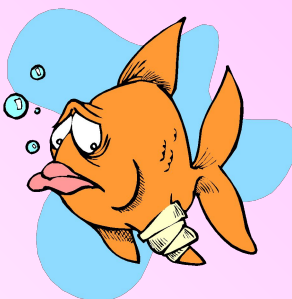
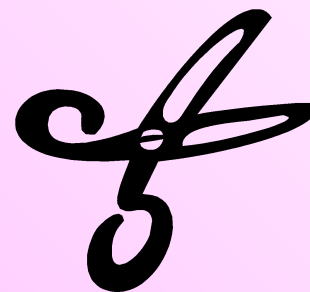
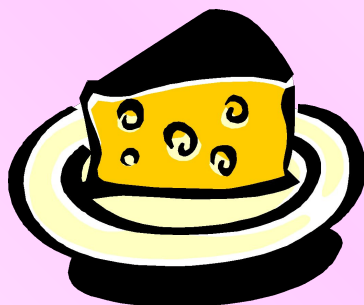
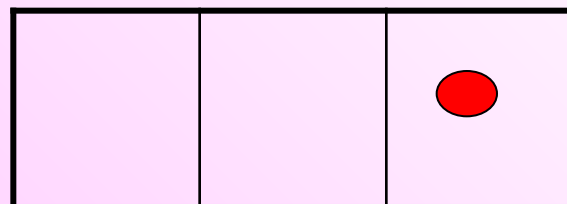
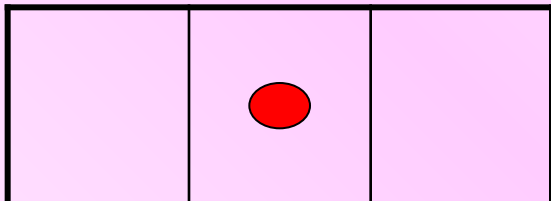
# Ы

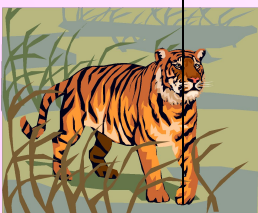
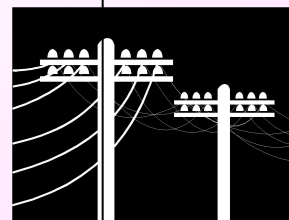
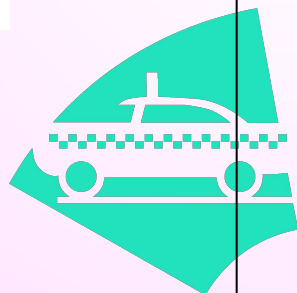
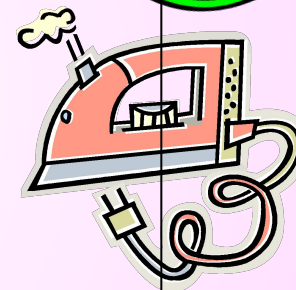
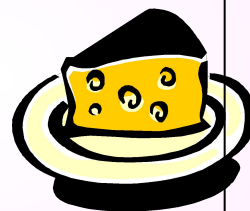
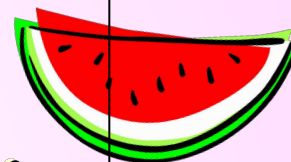
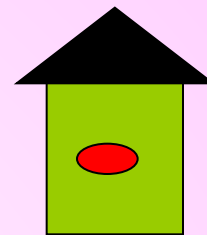
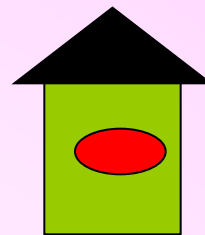
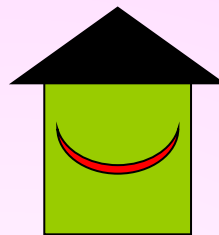
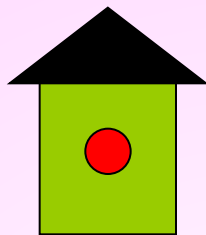
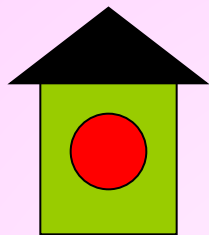
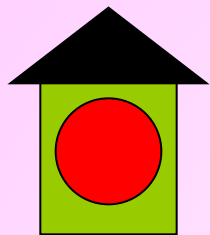


Найди слова со звуком **ы** в конце.



# Кто где живёт?





Кто где живёт?



До свидання!



## Список используемых источников

- О.С. Гомзяк «Говорим правильно»  
Москва Издательство «ГНОМ и Д»  
2007год
- Г.Ванюхина «Речецветик»  
«Старсо» г. Екатеринбург 1993 год
- [www.yandex.ru](http://www.yandex.ru) (картинки)

