



Урок письма в 1 классе

Савченко Ирина Фёдоровна,
учитель начальных классов
МБОУ «Гимназия №7»
г. Батайск Ростовской области
2012 г.



Гласные:

ь о у а и

Согласные:

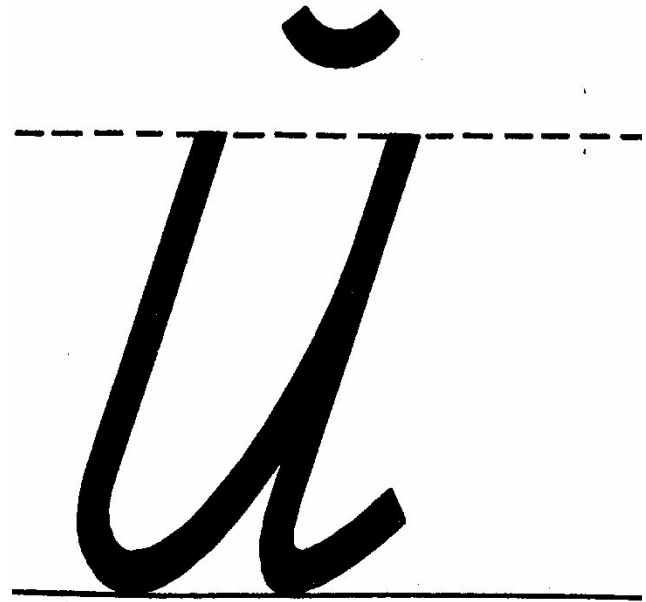
л м н с й

Сравни:



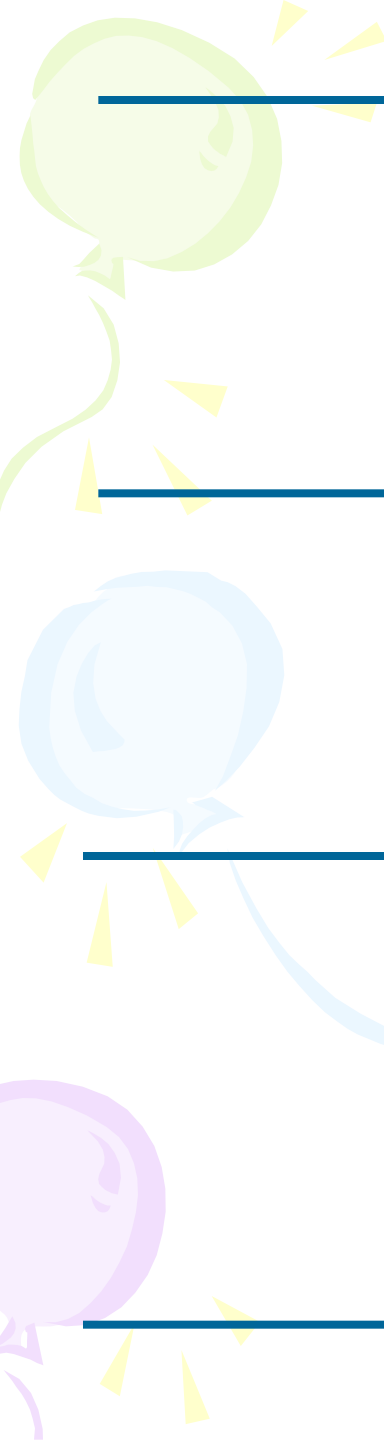
и

A cursive lowercase letter 'и' is shown on a set of three horizontal lines: a dashed top line, a solid middle line, and a solid bottom line. The letter starts at the middle line, goes down to the bottom line, curves to the left, then back up to the middle line, and finally down to the bottom line again.

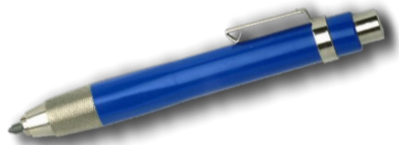


й

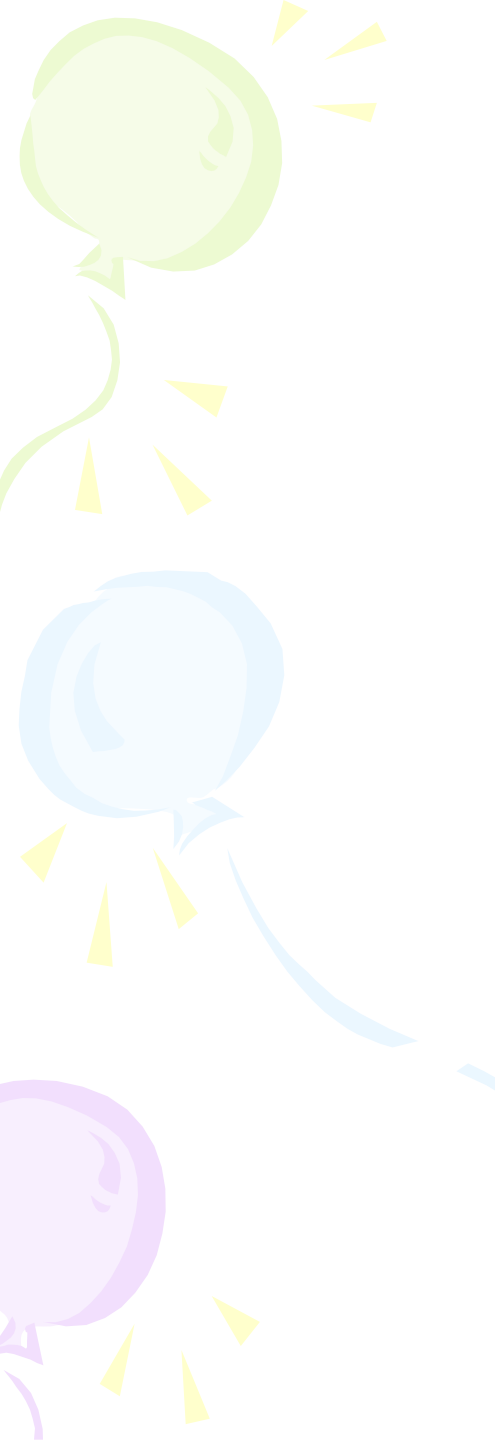
A cursive lowercase letter 'й' is shown on a set of three horizontal lines: a dashed top line, a solid middle line, and a solid bottom line. The letter starts at the middle line, goes down to the bottom line, curves to the left, then back up to the middle line, and finally down to the bottom line again. A small black hook is positioned above the top line.



u







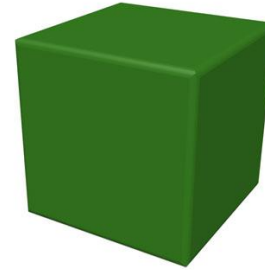
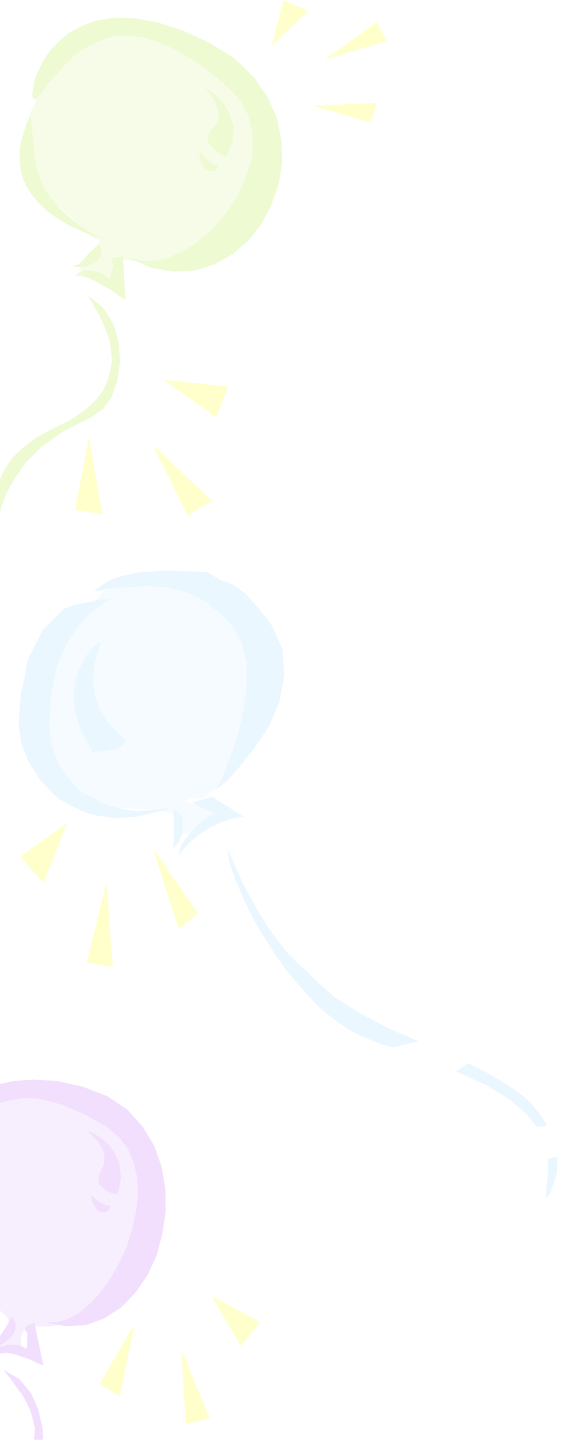


Photo courtesy of WowWee Group Limited via RobotsRule.com







Спасибо за работу

