

# Увлекательные ребусы

Мутьева М.В.

**a**

,



ай

A large, stylized red Cyrillic letter 'а' is centered on a white background. Inside the upper loop of the 'а', the letters 'а' and 'й' are written in a smaller font. The 'а' is red and the 'й' is black. The entire graphic is set within a white rounded rectangle with a red border, which is itself on a blue gradient background.

ба





Ka

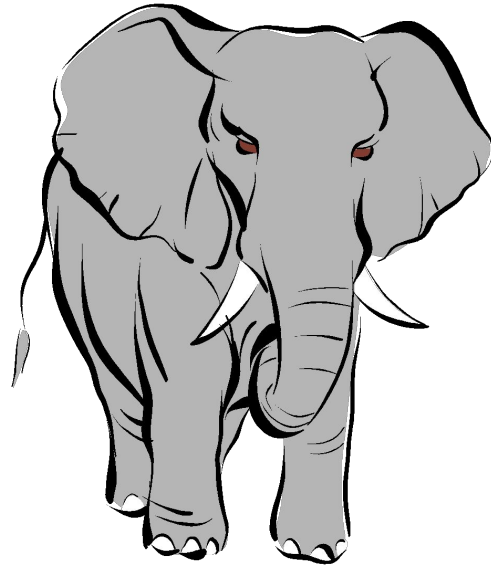


y

~~e~~

а

”



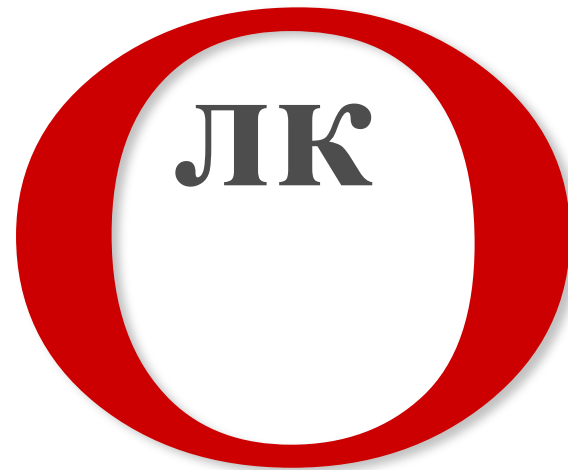
*K*

**e**





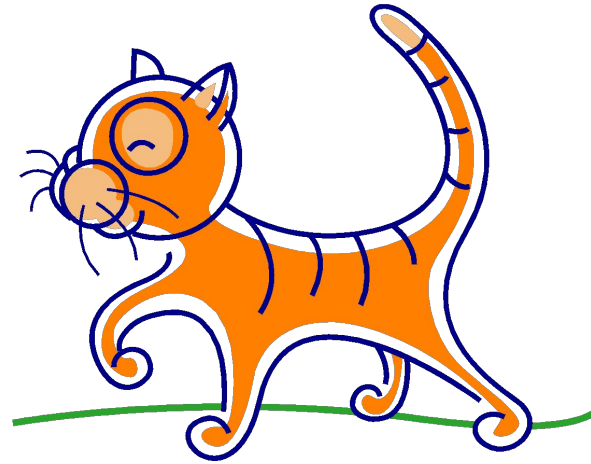
;



**рОН**

A large, thick red ring is centered on the page. Overlaid on the top portion of the ring are the Cyrillic letters 'рОН' in a bold, black, serif font. The 'р' is lowercase and positioned to the left of the 'ОН', which are uppercase. The entire graphic is set against a white background with a dark blue border.

100



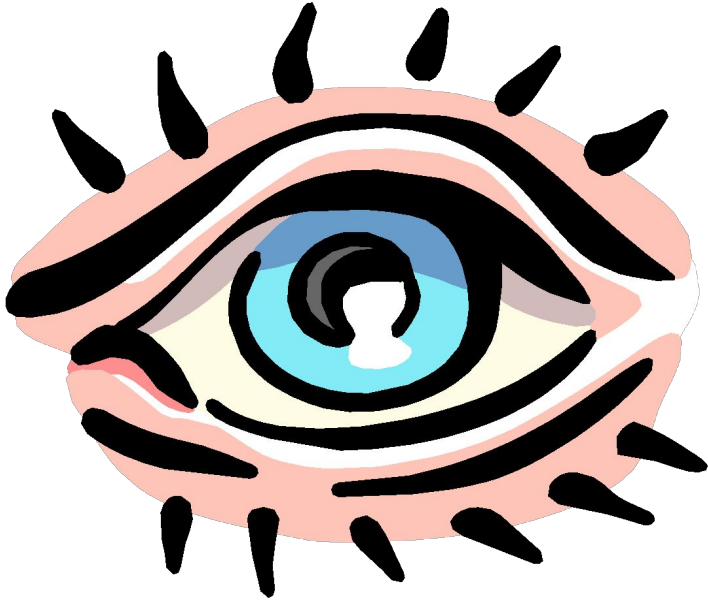
” ”

Γε





ka



~~Л~~

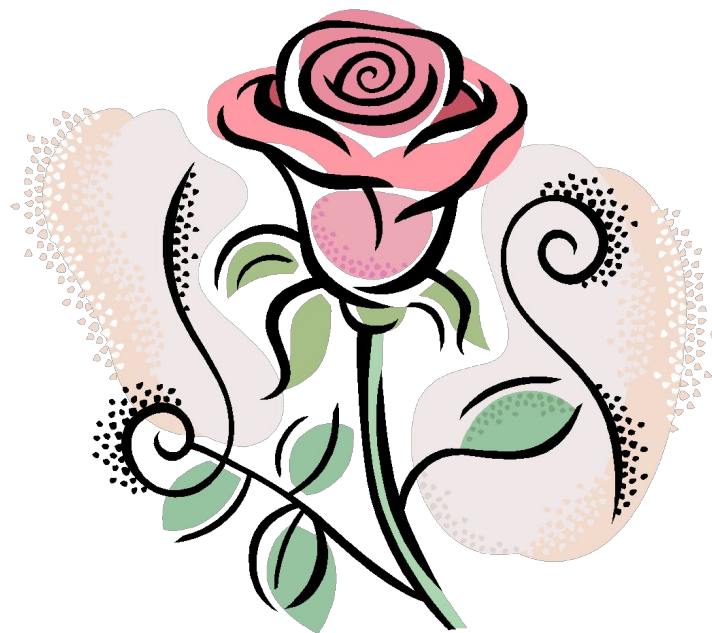


’

НИК



Г



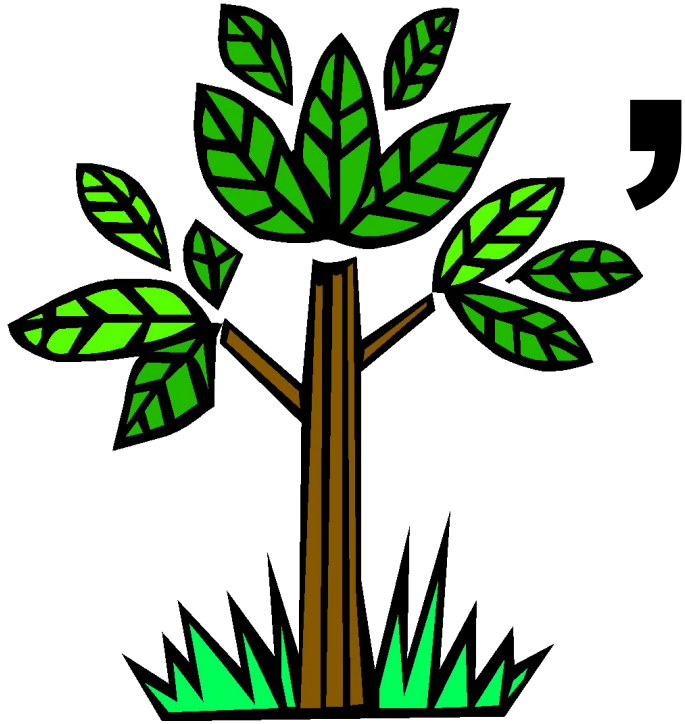
Г



”



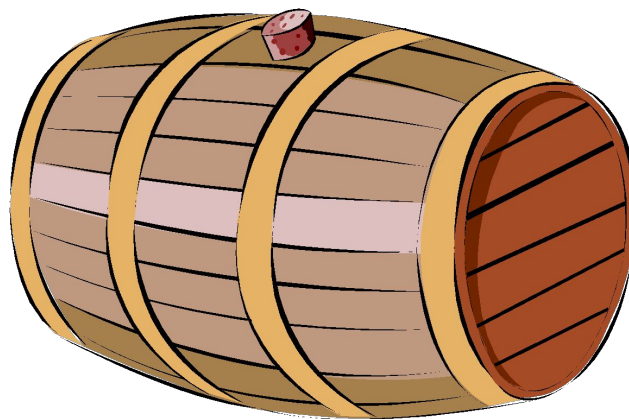
”



ДОГО Р

Д

,





ДЯТ



,

e





ЖК

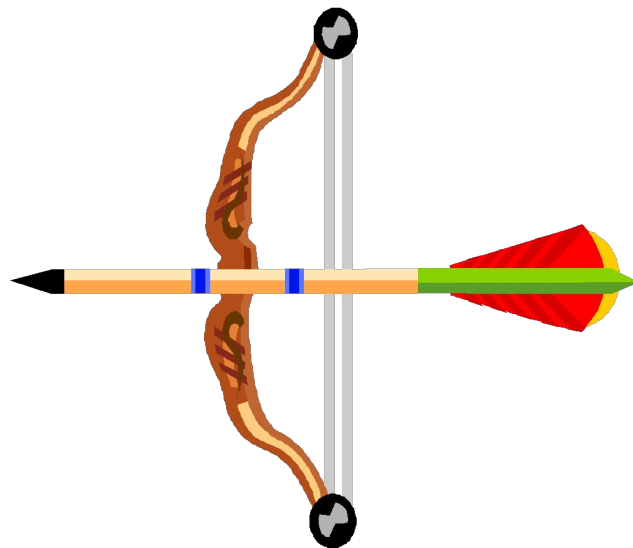
Ж

~~Р~~

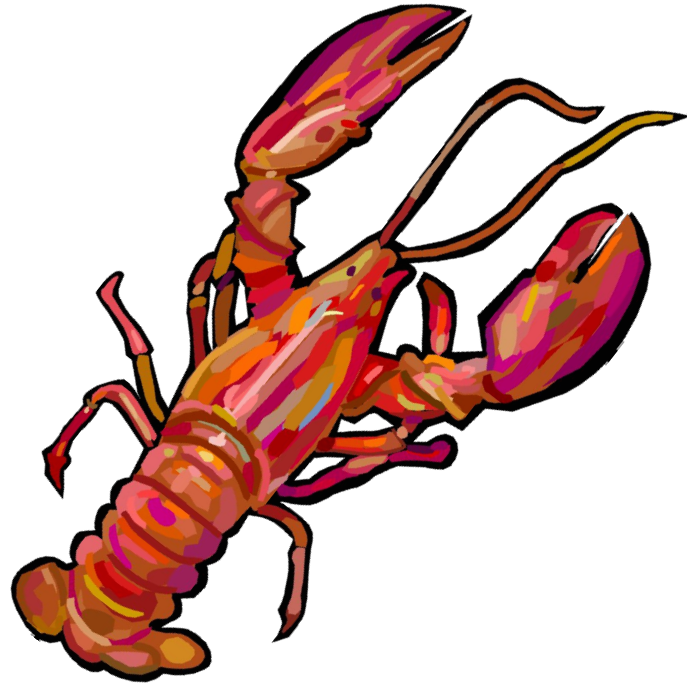


Ж

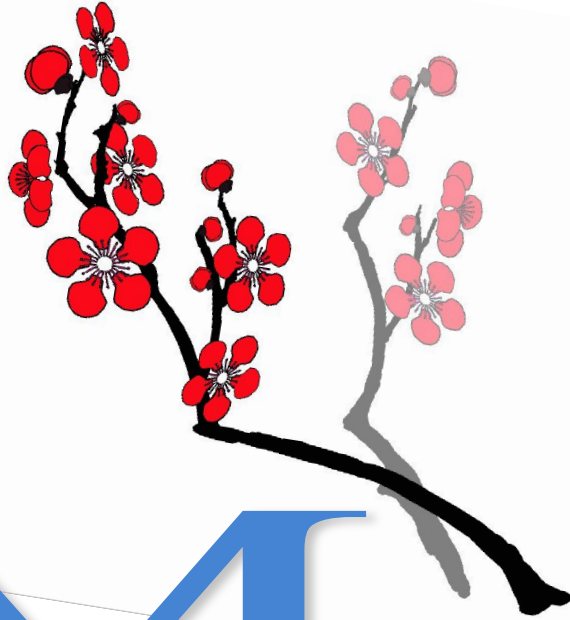
~~Д~~



T  
B



,



M

MIO

K

за Н  
~~р~~



ЯР



ЦР

З

~~Д~~



**3**НОК

ЗИ



,

И



,

КИ

К

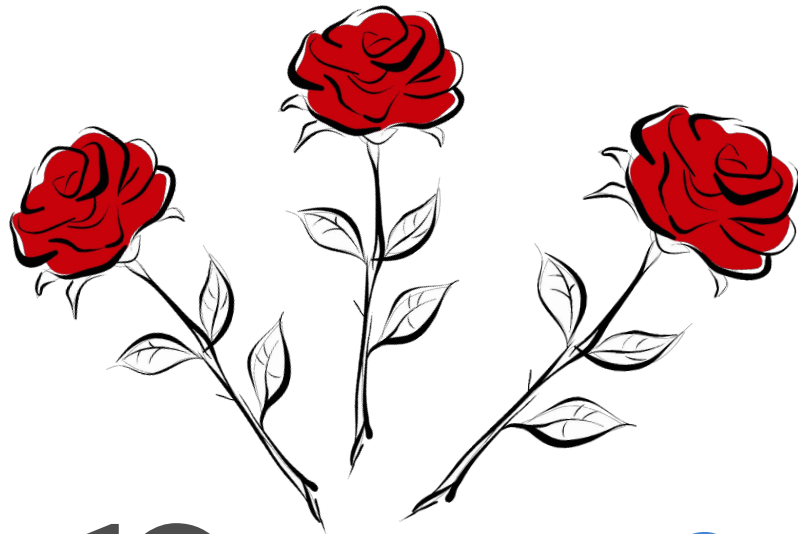
~~И~~



3

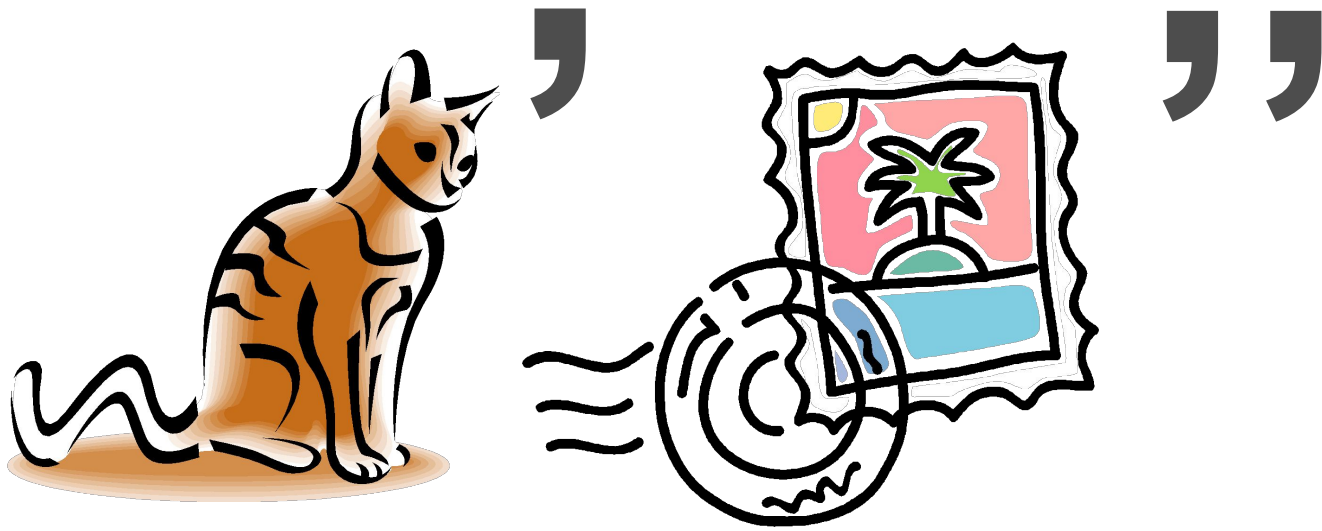
~~c~~

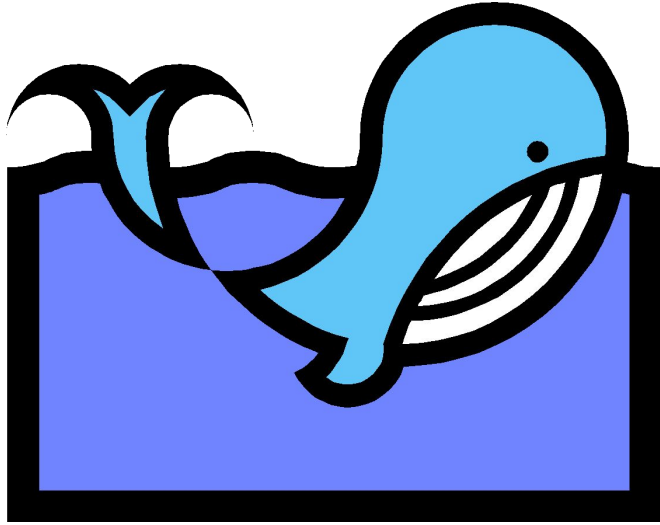




**p = K**

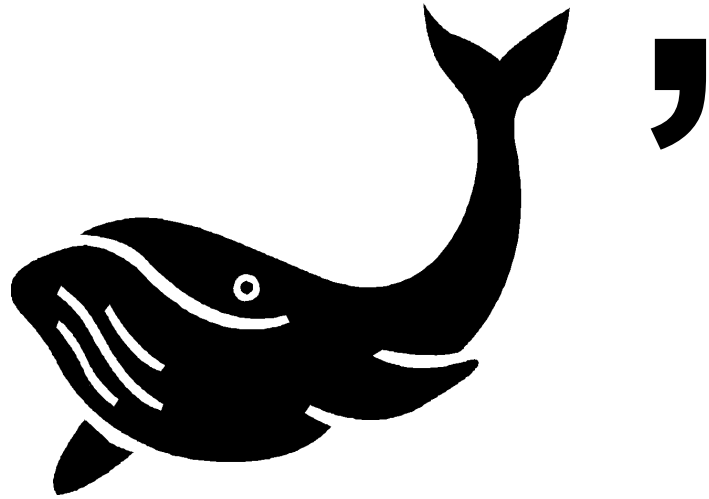
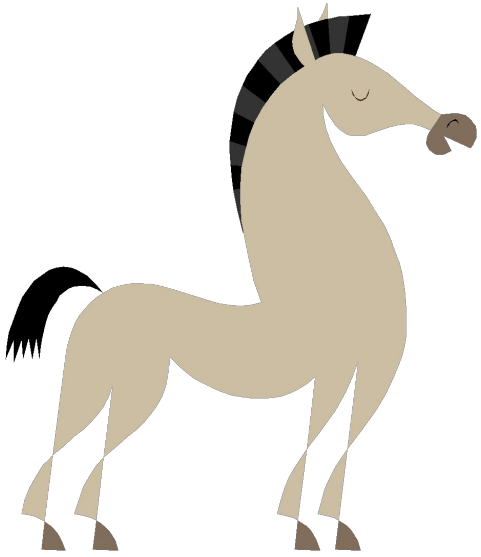






O

~~II~~



K

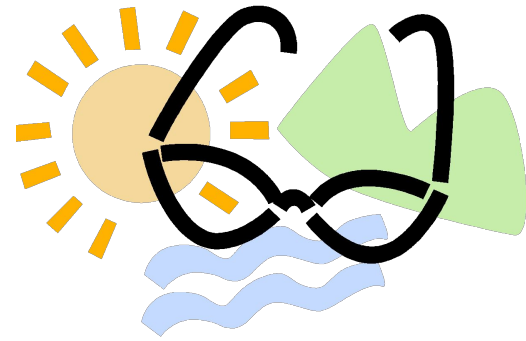




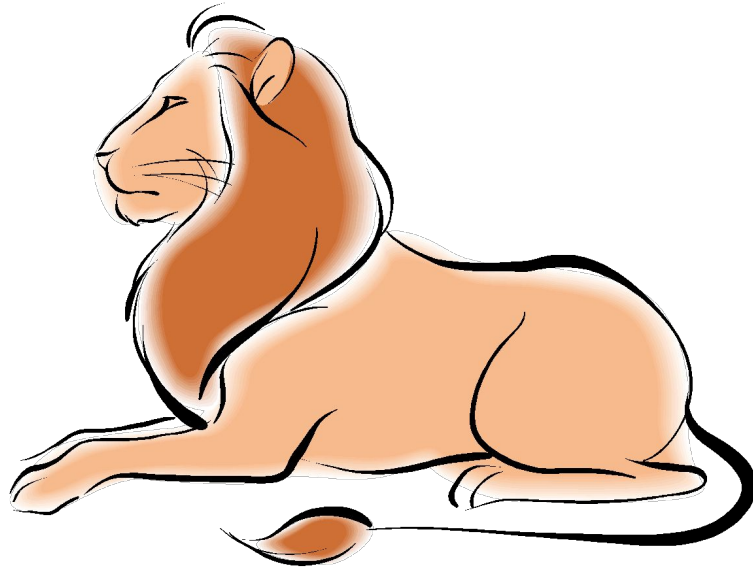
3 = c



,



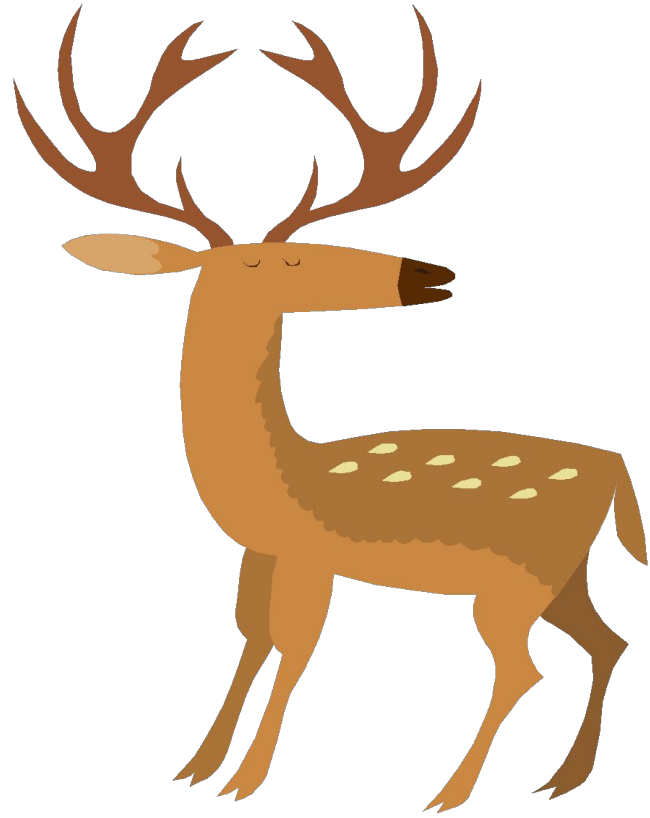
*ЛАС.*



**B = C**

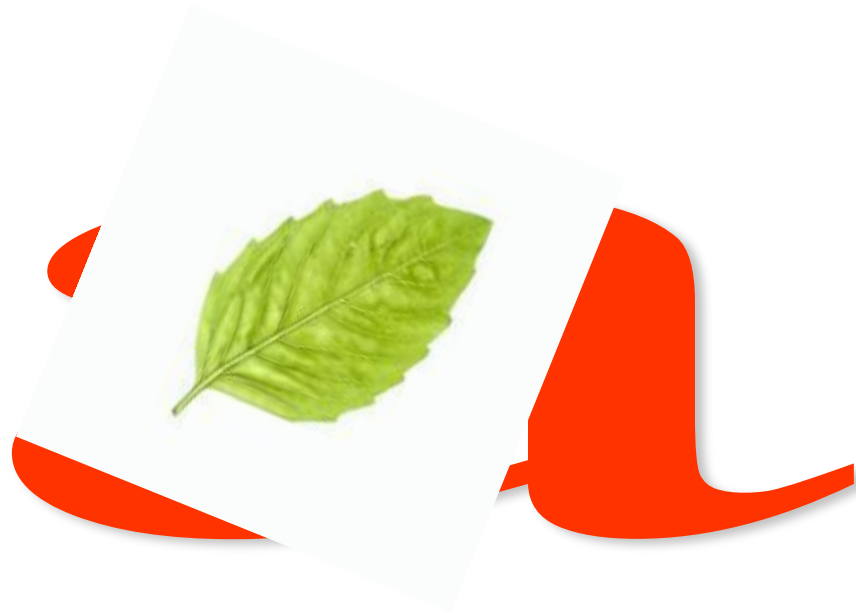


;





T = a





Л

~~Ш~~



та

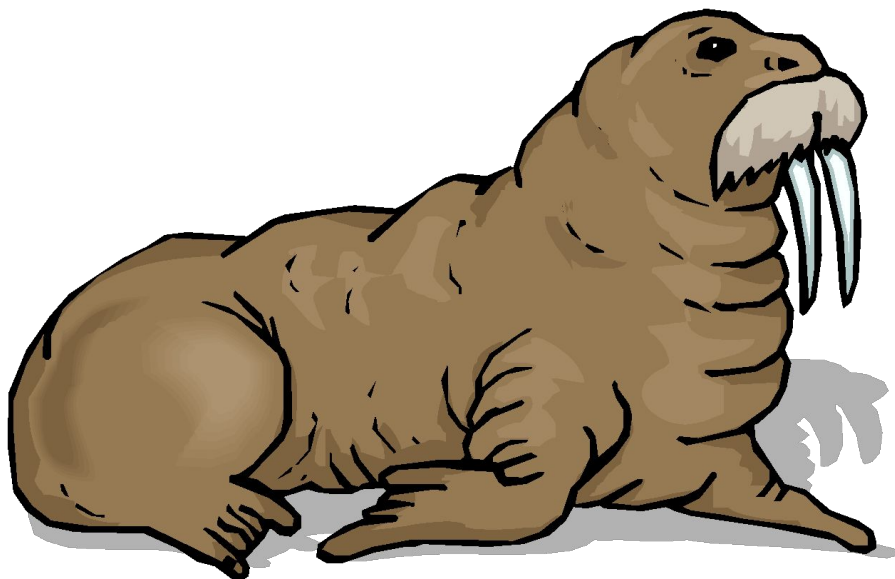
я=е



”

KO

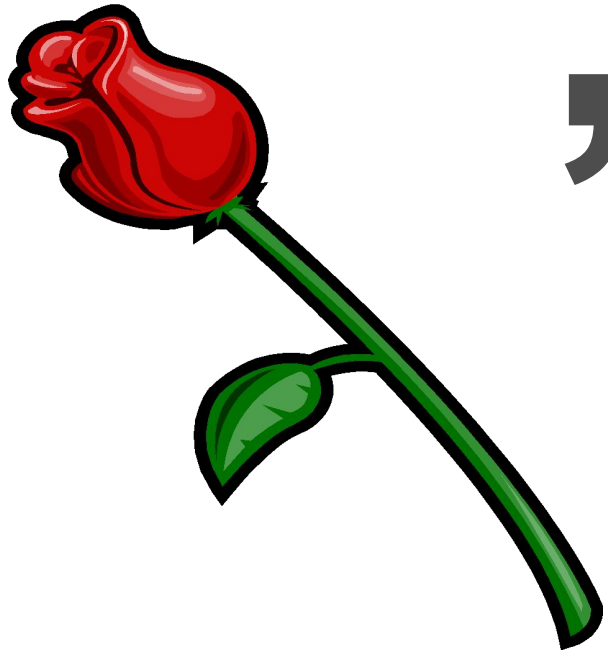
”



е

~~ж~~

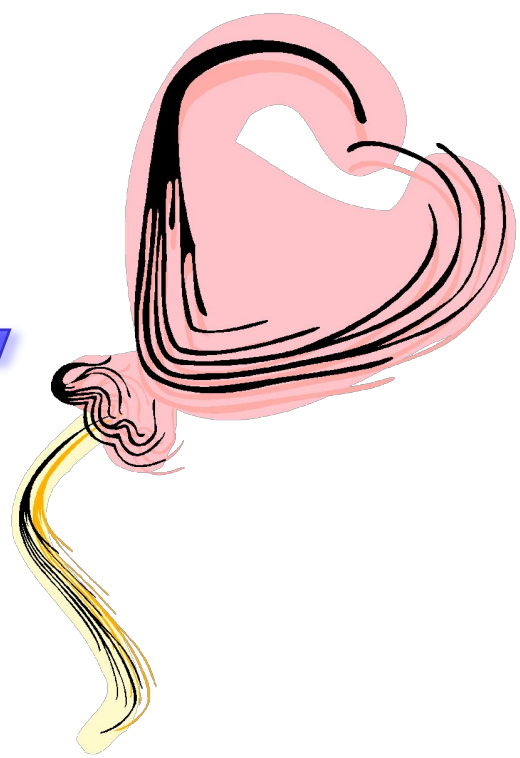
MO





а

Т



,

KA



y

*НИ.*

öë

,





,



”

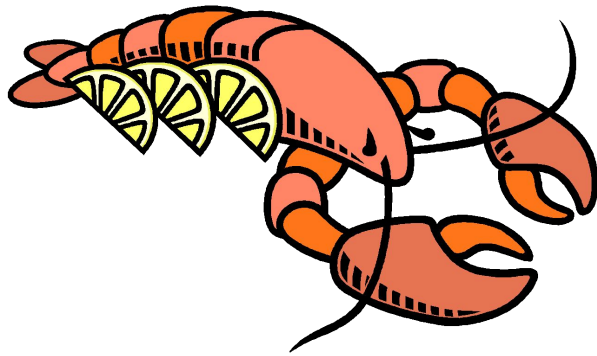
”





””””





eta

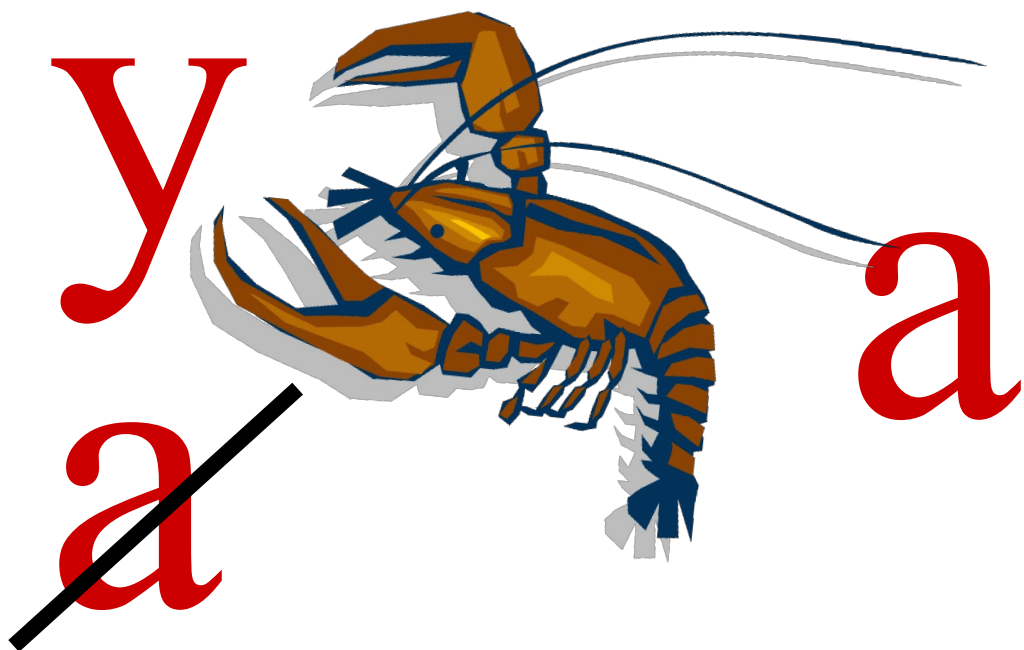
,



a



$K = p$

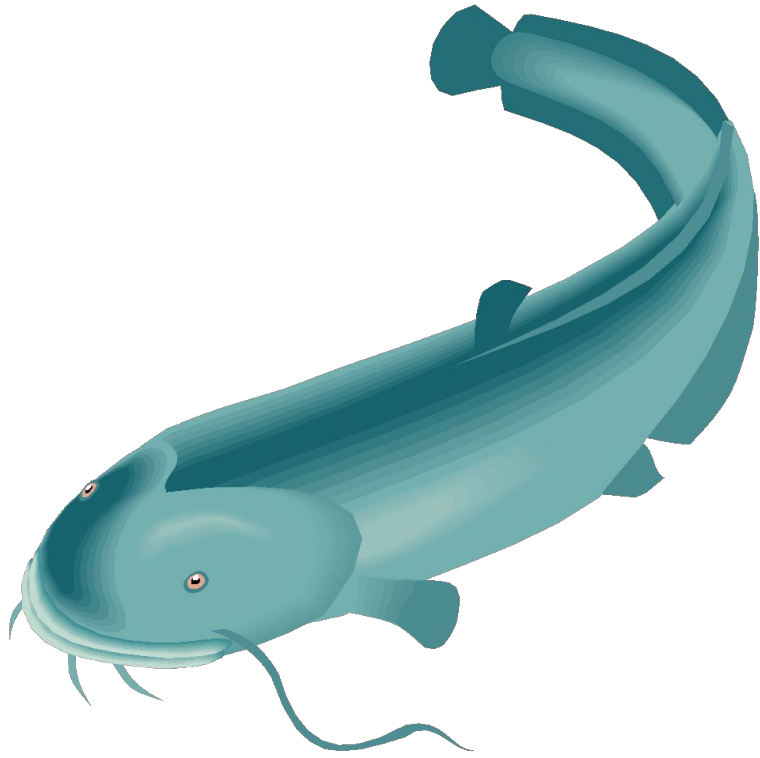




B



K



K

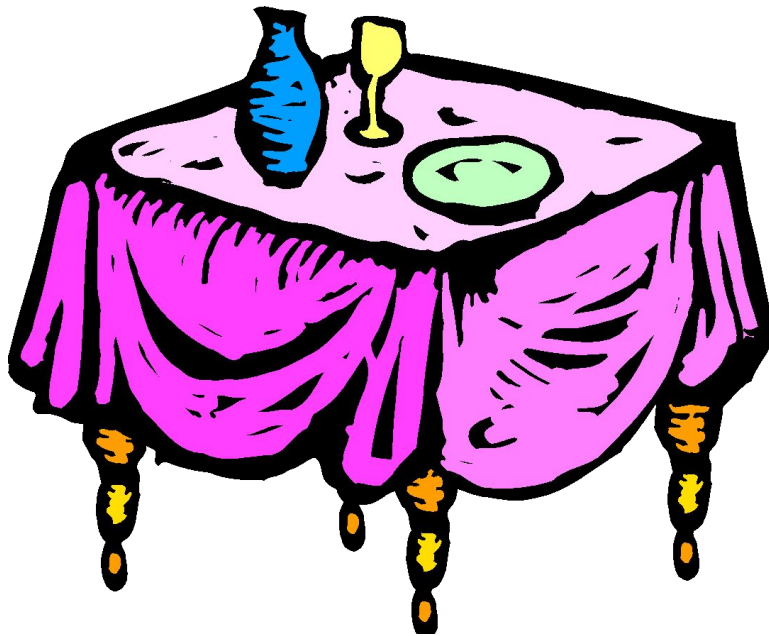
~~M~~



$$y = 0$$

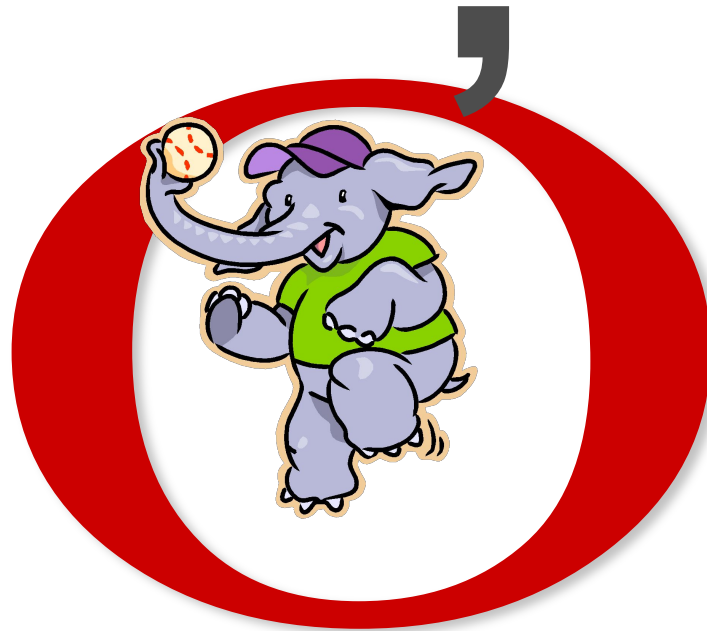


*100* лб



y

~~o~~



стре



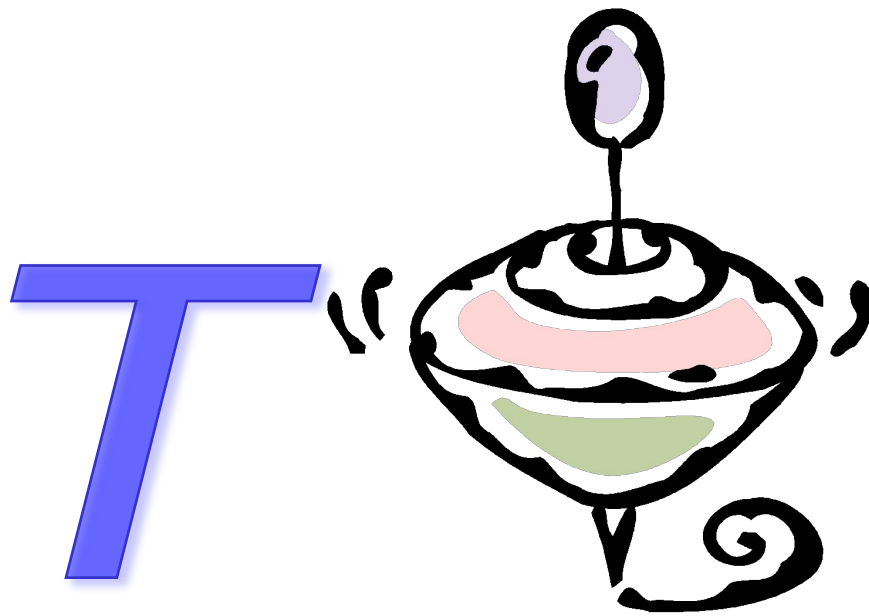
те  изор

ТМ



”



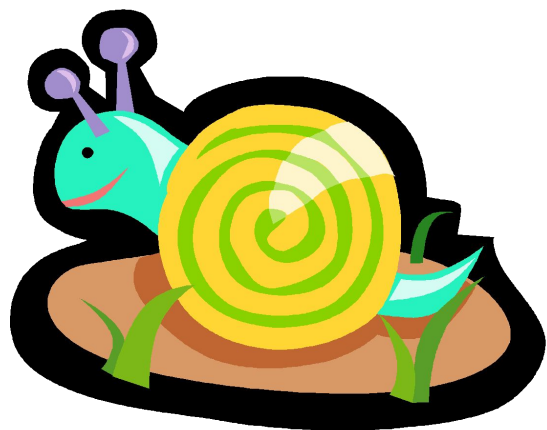


у

~~Ю~~



**а**  
**ТЫК**



Ц

~~ТК~~

*y*.

HOT

ф а  
н

*ΦΟΡ.*

XO



K

~~Ч~~



Ш=Й



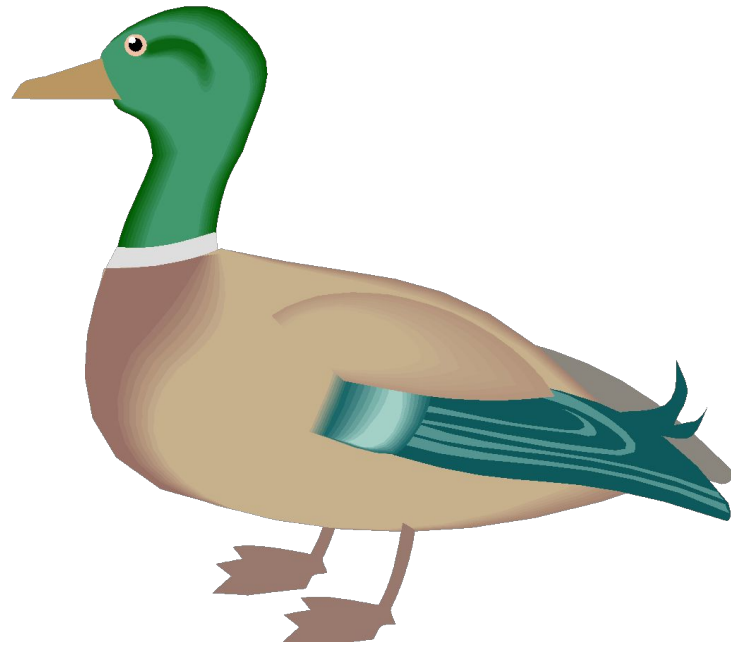


φ

”

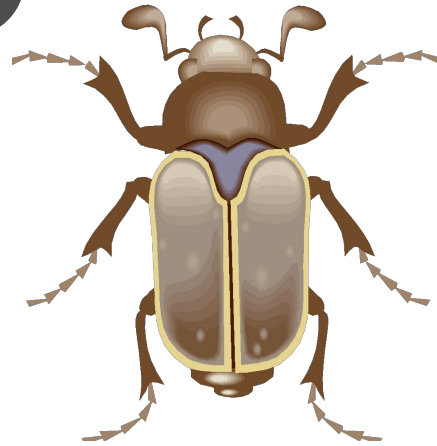


III



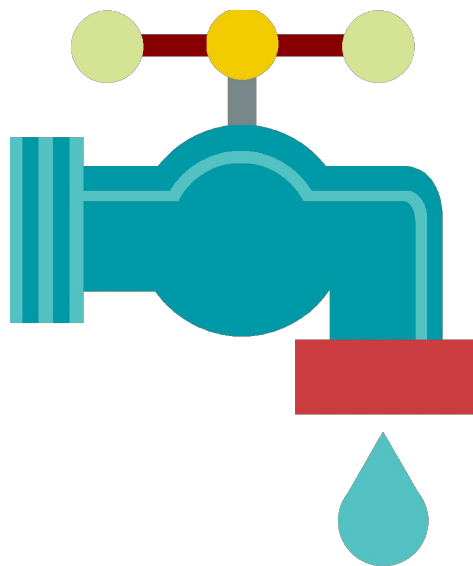
Щ

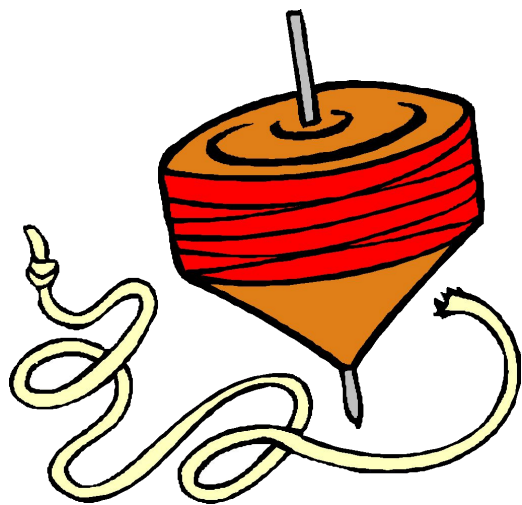
,



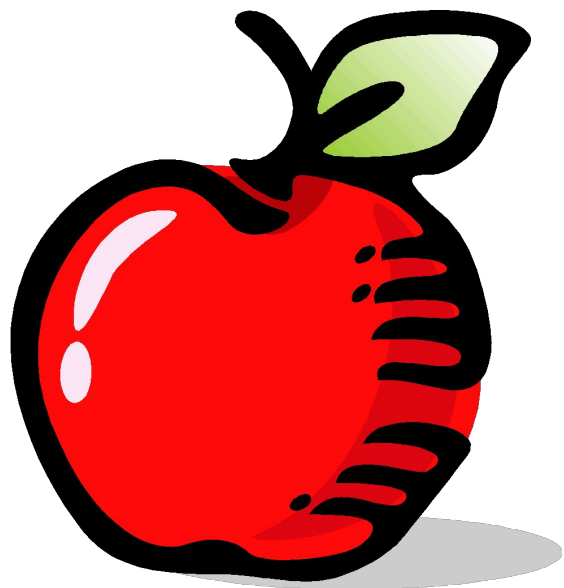
а

Э





л = р



“

ЯН