



**Весна**



**ПОД, ПЕЛЬ, КА, СНЕЖ, СОЛ,  
НИК, ТЁП, НЦЕ, ЛОЕ**

**КАПЕЛЬ, ПОДСНЕЖНИК,  
СОЛНЦЕ, ТЁПЛОЕ.**





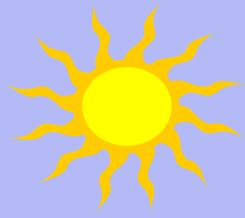




□ КАПЕЛЬ, ПОДСНЕЖНИК,  
СОЛНЦЕ, ТЁПЛОЕ.

A vibrant spring landscape. The scene is framed by blossoming branches on the left and right. The left side shows white blossoms on dark branches. The right side shows green leaves and yellow flowers. The background features a bright blue sky with a few birds flying, a green field, and a path leading towards the horizon. The overall atmosphere is warm and sunny.

**ТЁПЛЫЙ**





## Изменение имён прилагательных по родам

**мужской род**

**женский род**

**средний род**

**какой?**

**какая?**

**какое?**

**- ОЙ, -ИЙ, -ЫЙ**

**- АЯ, -ЯЯ**

**- ОЕ, -ЕЕ**

A vibrant spring landscape. The scene is framed by blossoming branches on the left and right. The left side shows white blossoms on dark branches. The right side shows green leaves and yellow flowers. The background features a bright blue sky with a few birds flying, a green field, and a path leading through a rocky area. The overall atmosphere is warm and sunny.

**ТЁПЛЫЙ**



# Домашнее задание:

□ с.72-73

повторить  
правило,

□ р.т. с.47

упр.103 или  
упр.104 (на  
выбор)

