

Assetz Here & Now
Rachenahalli, North Bangalore



Assetz Here & Now | Overview

- Assetz Here & Now is best pre launch apartment venture developed by tremendous real estate Builder, Named as Assetz Lifestyle.
- It is located at Rachenahalli, North part of Bangalore.
- Spread over 3 Acres of prime land area. Assetz Here & Now Offers 384 units with an latest designed 1 & 2 BHK Configurations.
- Super built up area ranges from 412 – 980 Sq Ft.
- It offers with an G+13 Floors.
- Rate Per Sq Ft is Rs. 4699/-.
- Budget starts from INR. 33 – 58 Lakhs Onwards.
- Possession : 36 Months from Launch.

Assetz Here & Now | Quick Facts

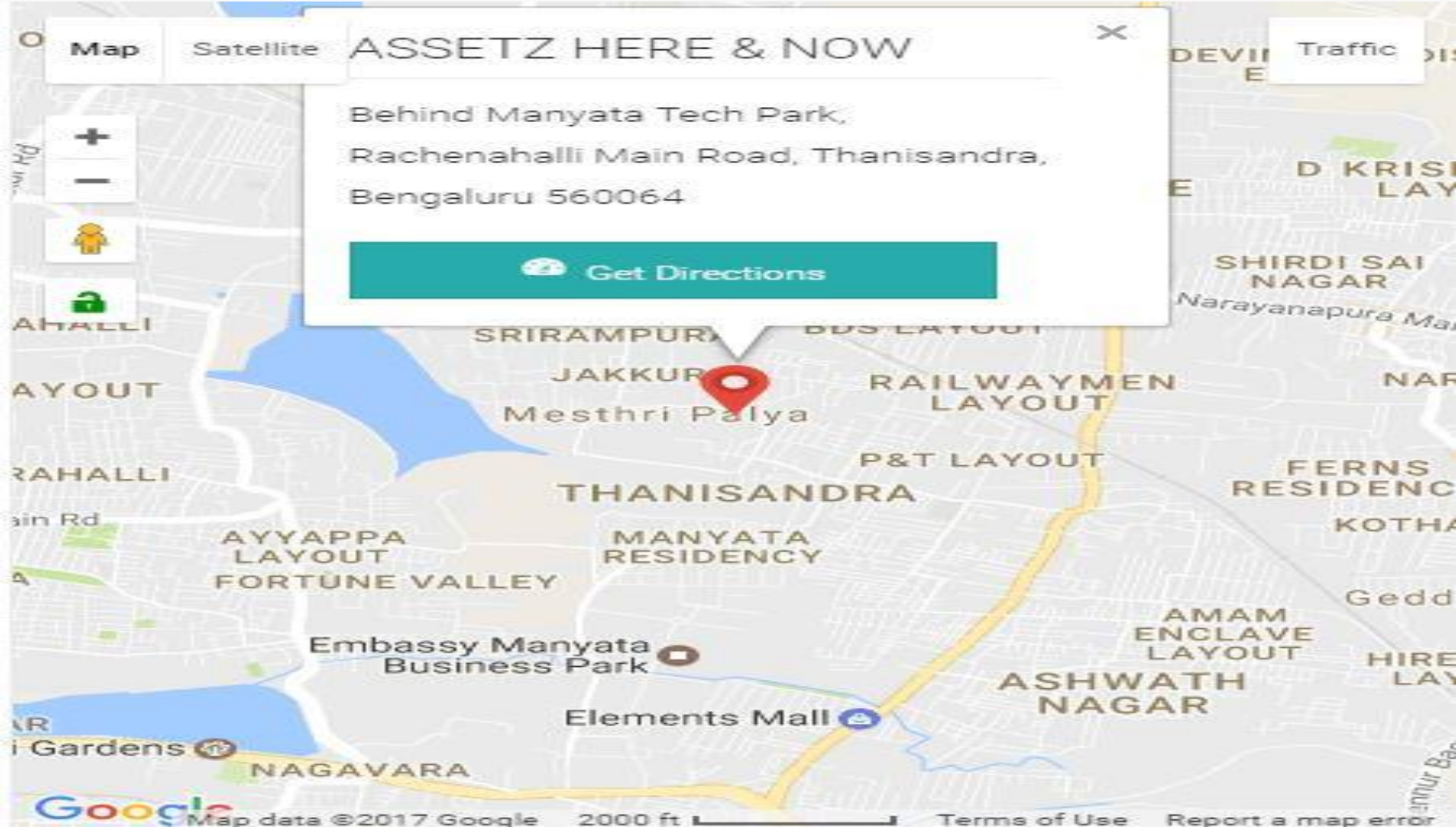
Project Type	Apartments
Project Stage	Pre Launch / Upcoming
Project Location	Rachenahalli, Bangalore
Project Zone	North Bangalore
Total Area	3 Acres
No of Units	384 Units
Unit Type	1 & 2 BHK
SBA	412 – 980 Sq Ft
Total Floors	G+13 Floors
Possession	36 Months From Launch
Rate Per Sq Ft	Rs. 4699/-
Budget	INR 33 – 58 Lakhs
Project Name & Builder	Assetz Here & Now , Assetz Lifestyle



About Assetz Lifestyle

Builder: At Assetz Lifestyle, we are driven not by the need to create more, but to design better. In an industry where design is often narrowed down to aesthetics, every component of our properties is led by design. Our focus on design in every detail enables us to create properties that are true assets for families and businesses that prosper in them. Founded in 2006, APG is primarily in the business of real estate development and business portfolio management with a secondary focus on infrastructure development in the Asia region. APG develops projects across commercial, residential and mixed-use asset classes. Besides our history of developing buildings to house many multinational commercial office tenants which has established the business with clear robust systems, transparent processes, and an eye for detail with a belief that conventions should be challenged, our focus has also been to elevate our customers' lifestyles.

Assetz Here & Now | Location Map



Assetz Here & Now | Master Plan Layout

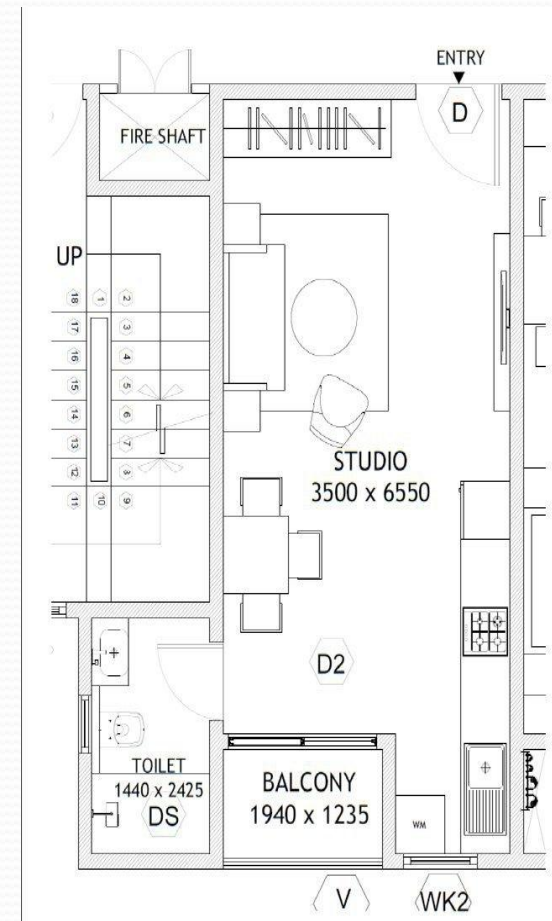
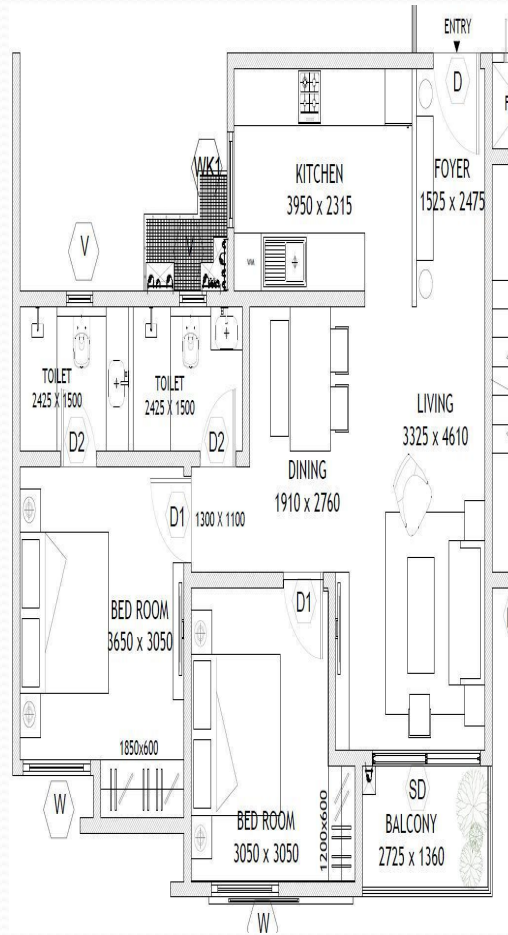
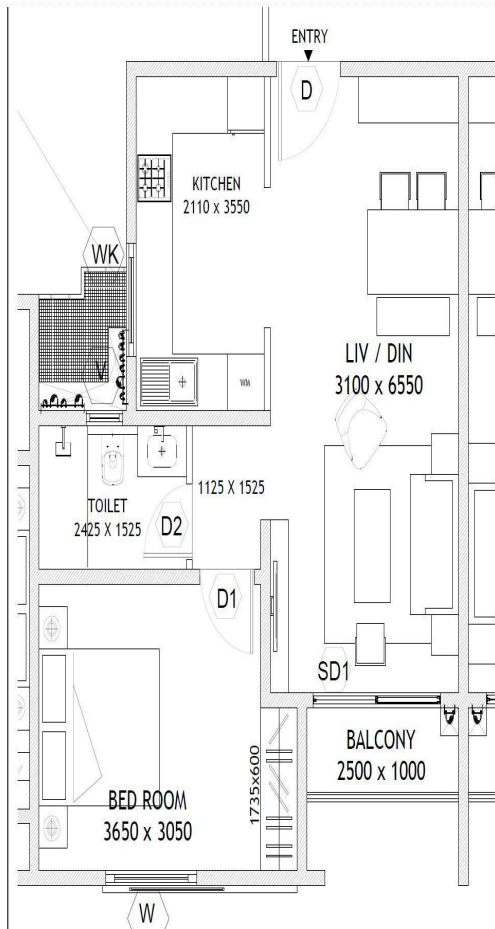


LEGEND:

1. Entry
2. Signage
3. Security Cabin
4. Pedestrian Entry
5. Waiting Pavilion
6. Pebble Finish Paving
7. Sculpture Stream
8. Hangout Zone with Movable Seaters
9. Dry Garden
10. Jogging Track
11. Trellis
12. Fitness Station
13. Seating Alcove
14. Viewing Pavilion
15. Kids Play Area
16. Walkway
17. Half Basket Ball Court
18. Beach Volley Ball Court
19. Badminton Court
20. Bleachers
21. Yoga Deck
22. Multi Play Lawn
23. Open Air Theatre
24. Banquet Lawn
25. BBQ (Non-Veg)
26. BBQ (Veg)
27. Sculpture on Pebble Bed
28. Lawn Mound
29. Exit

I. Community Amenities	II. Health & Fitness	III. Others
1. Tree Plaza	1. Pedestrian Walkway	1. Cards room
2. Waiting Pavilion	2. Eco Park	2. BBQ Area
3. Sculpture Stream	3. Garden	3. Sanitation facilities for Domestic workers & Drivers
4. Kids play area	4. Jogging track	4. 100% power backup for common utilities
5. Open Air Theatre	5. Fitness station	5. Sewage Treatment Plant
6. Pool table	6. Basket Ball Court	6. Seismic resistant structure design.
7. Swimming Pool	7. Badminton Court	7. fire fighting system
8. Kids Pool	8. Yoga Deck	8. Durable exterior textured paint
9. Library	9. Recreation Room	
	10. Snooker & Football	
	11. Pool Deck	

Assetz Here & Now | 1 & 2 BHK Floor Plan



Assetz Here & Now | Specifications

- **Structure**

RCC framed Seismic resistant structure with concrete wall partitions using pre-engineered aluminum formwork

- **Doors**

Engineered door both sides polished & fitted with good quality hardware of SS finish for all internal doors.

- **Doors**

Otis / Equivalent automatic elevators in every block, Round the clock security with intercom facility CCTV Camera at all vantage points.

- **Flooring**

Vitrified Tile Flooring in Living, Dining & Bedrooms, Anti Skid Ceramic Tile flooring for Bathrooms, Balconies & Utility.

- **Plumbing and Sanitary**

Porcelain wall mounted EWC of Parryware / Hindware or equivalent make with provision of flush valve will be provided in all bathrooms

- **Electrical**

Modular switches, Suitable power back up for common areas, lifts & external lighting, 50% power back up of the EB load provided for each apartment

For More Details Visit Our Site & Booking's Contact Us:

- Mob : +91 8884747474.
- Email : info@homeadda.co.in
- Website : <http://www.assetzhereandnowbangalore.in/>