

# Documentary and Secondary Sources

The Historical Truth method of evidence  
evaluation



# Learning Objectives



# Primary / Documentary Sources

- 

—

—

—

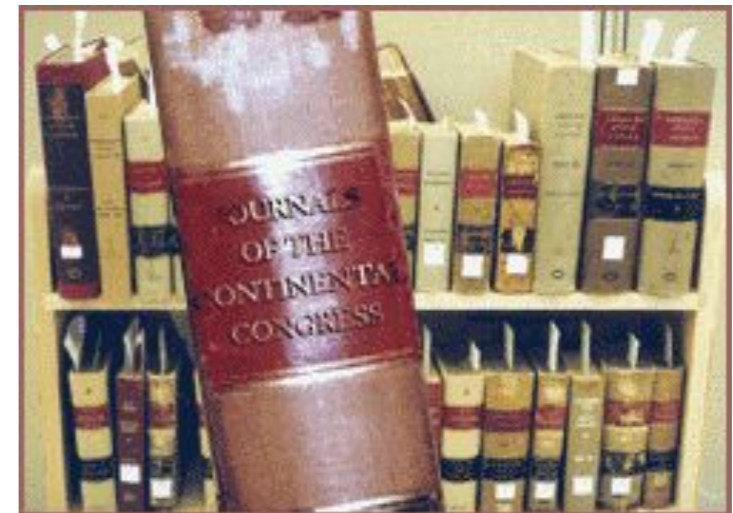
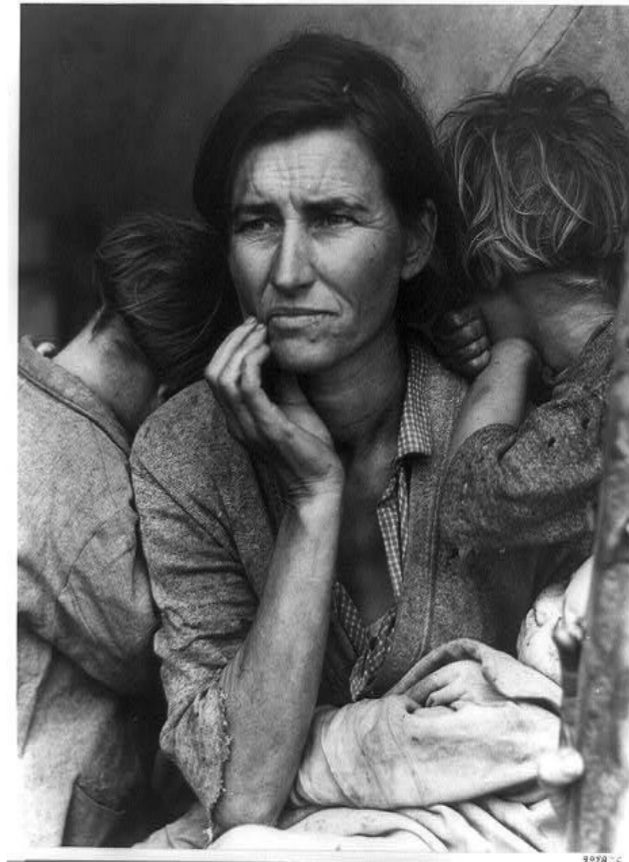


Image found at:  
<http://memory.loc.gov/ammem/amlaw/lwjc.html>

# Primary Sources



Library of Congress Prints and Photographs Division  
Washington, DC 20540 <http://hdl.loc.gov/loc.pnp/pp.print>

# Primary Source Examples

- 
- 
- 
- 
- 
- 
- 
- 
- 
- 





Image taken from:  
<http://www.loc.gov/exhibits/treasures/images/cychas.jpg>



Image taken from:  
<http://memory.loc.gov/pnp/ppprs/00200/00200v.jpg>

### Examples of Primary Sources:

- Baseball Cards
- Photos
- Editorial Cartoons

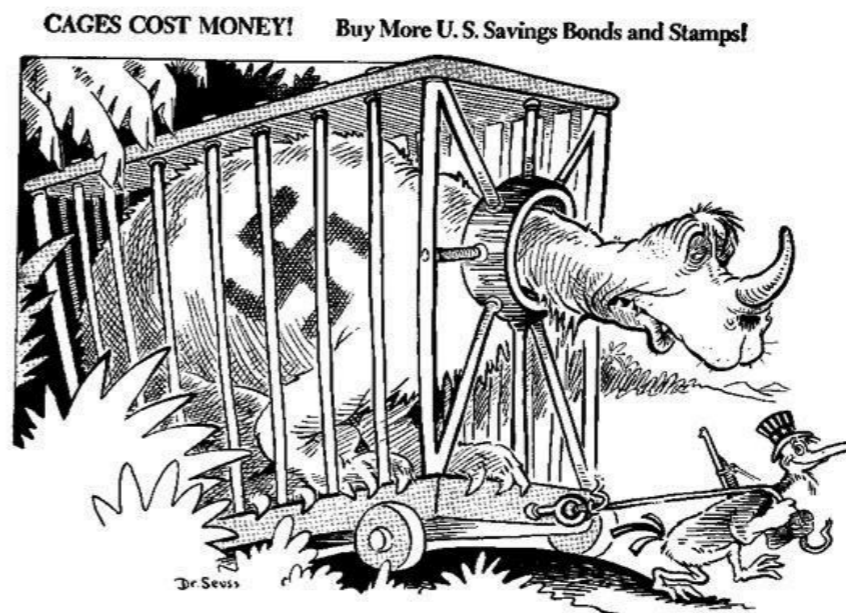


Image taken from:  
<http://orpheus.ucsd.edu/speccoll/dspolitic/Frame.htm>



# Secondary Sources



# Secondary Sources

- 

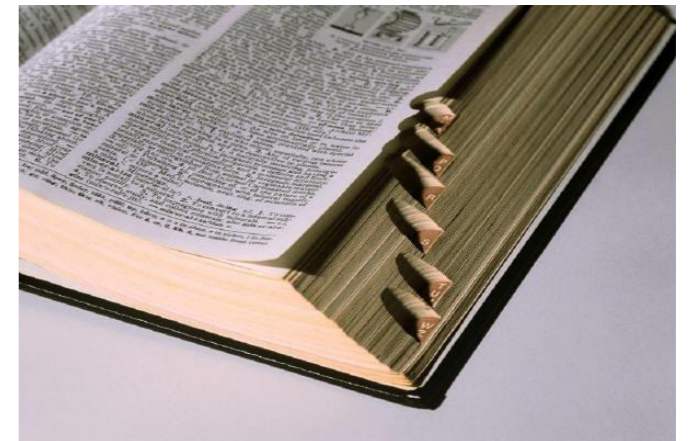
- 

- 

- 

- 

- 





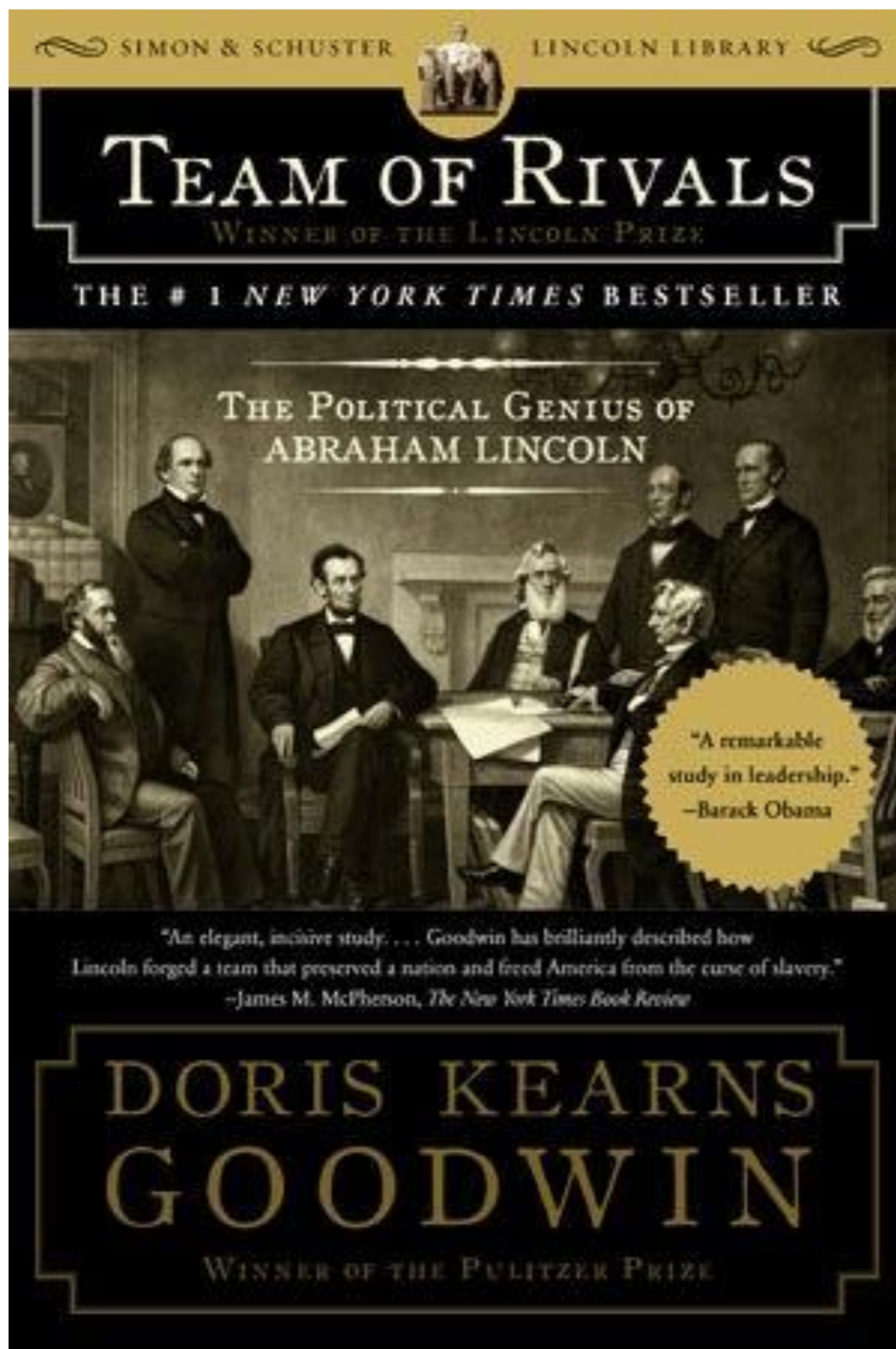


Image taken from <http://www.doriskearnsgoodwin.com/>

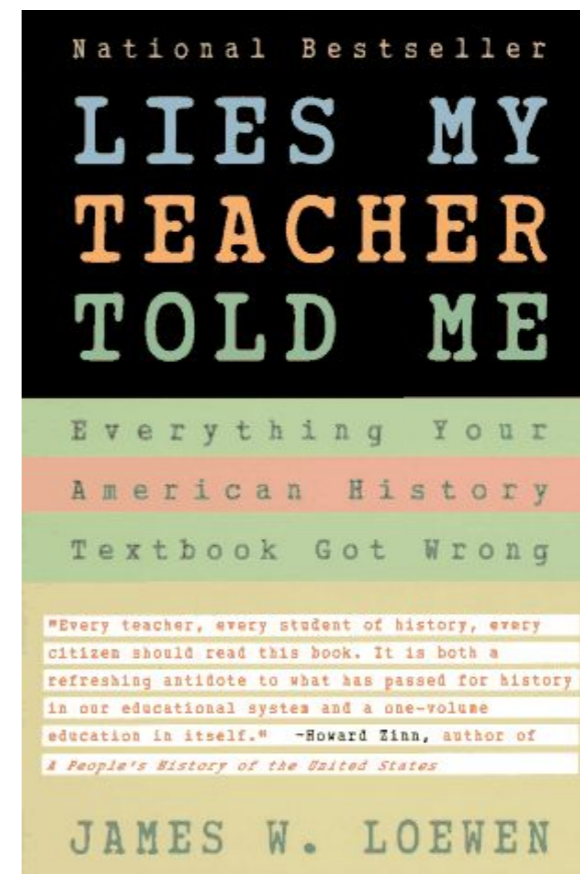


Image taken from <http://sundown.afro.illinois.edu/liesmyteachertoldme.php>

### Examples of Secondary Sources:

- Biographies
- Textbooks
- Encyclopedias
- Historiographies

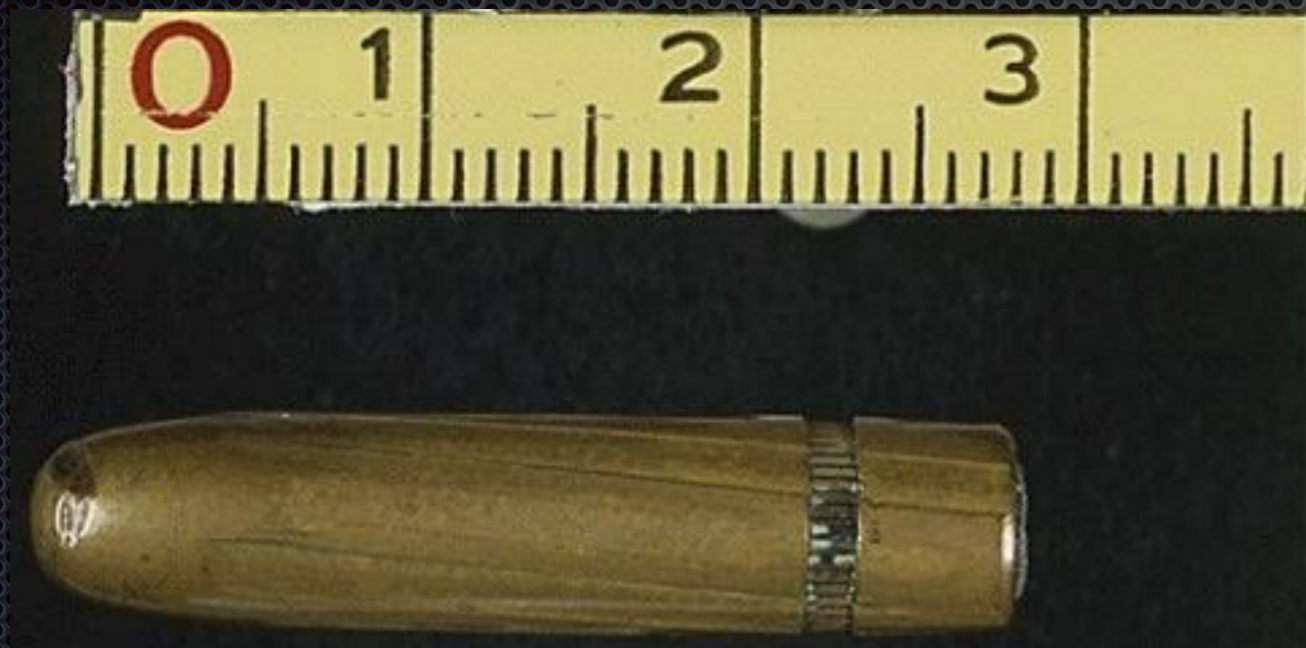


# Relics / Artifacts

- . Object that relates to a particular event



# Relics / Artifacts





# Historical Method of Research

- . Is the process of systematically examining an account of what has happened in the past



Review your handouts