

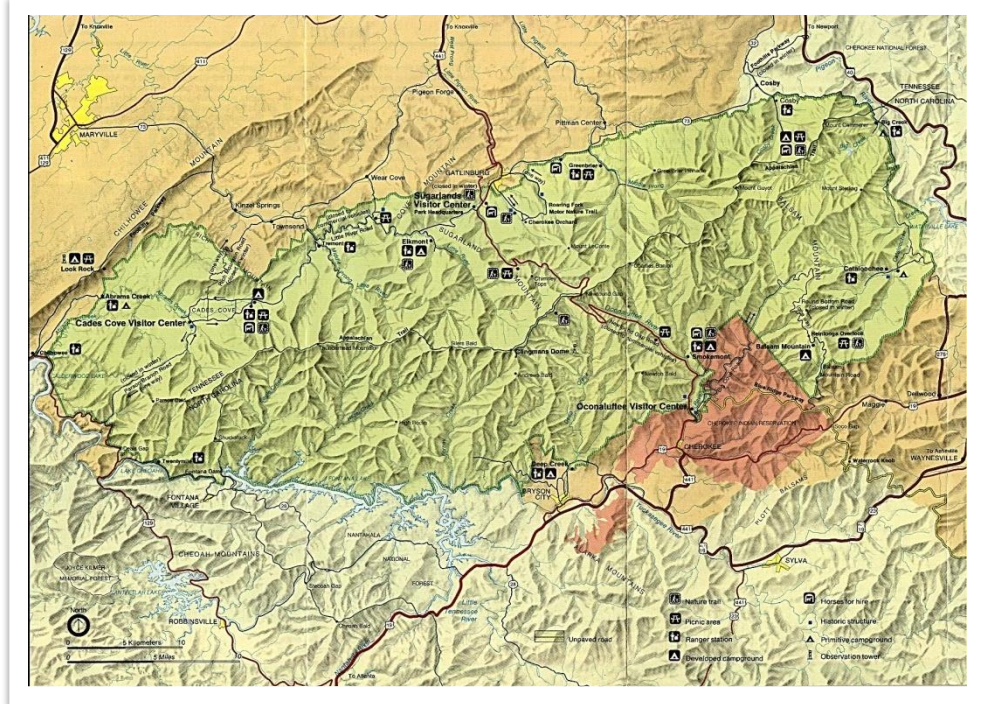
GREAT SMOKY MOUNTAINS NATIONAL PARK



The USA ,Tennessee

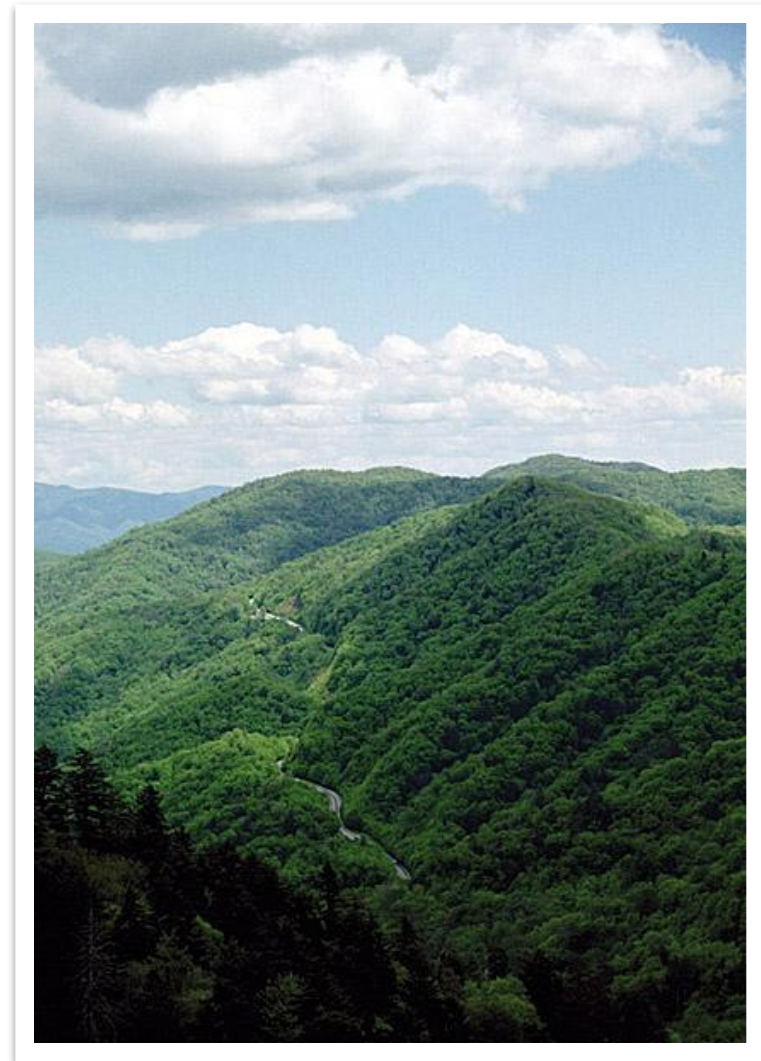
MAIN

- Location: Swain & Haywood counties in North Carolina; Sevier, Blount, & Coker counties in Tennessee, USA
- Nearest city: Cherokee, North Carolina and Gatlinburg, Tennessee
- Area: 521,086 acres (276,344 acres in North Carolina, 244,742 acres (990.44 km²) in Tennessee)
- Established: June 15, 1934
- Visitors: 9,289,215(in 2006)
- Governing body: National Park Service
- State Party: United States of America
- Type: Natural
- Region: Europe and North America



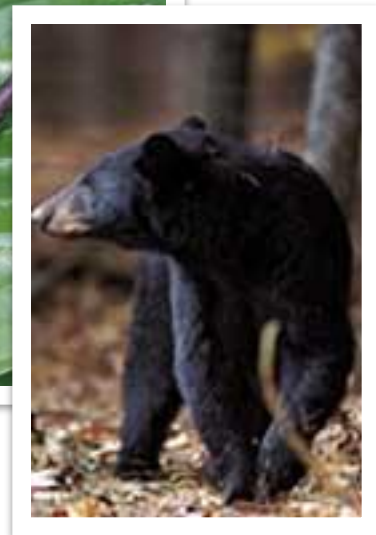
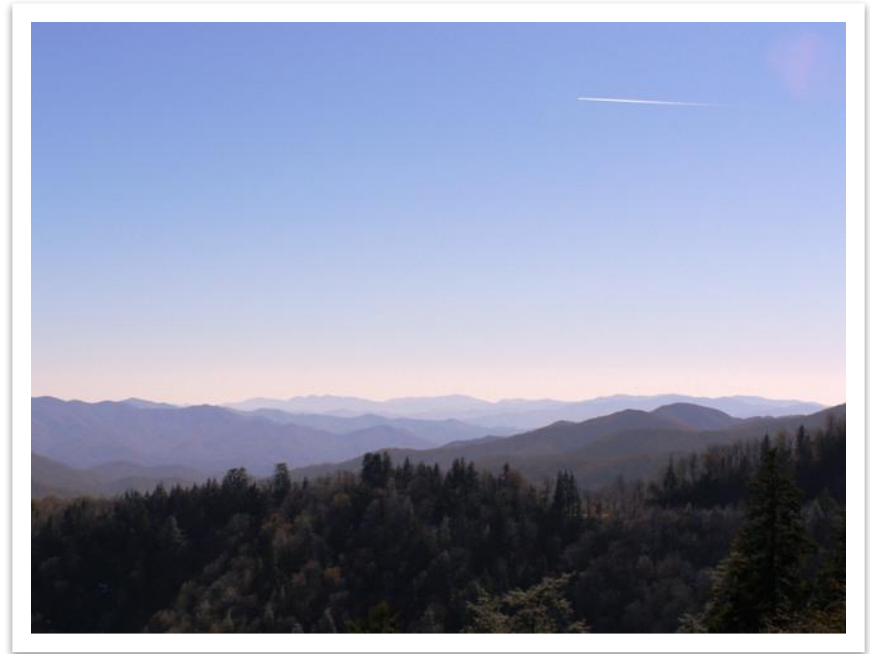
HISTORY

- the region was part of the homeland of the Cherokee Indians
- 18th -early 19th century -Frontierspeople began settling the land
- June 15, 1934-the park was officially established
- 1976 -the park was designated an International Biosphere Reserve
- 1983 – the park certified as a UNESCO World Heritage Site
- 1988 – the park became a part of the Southern Appalachian Biosphere



NATURAL FEATURES

- Elevations ranging from 876 feet (267 m) at the mouth of Abrams Creek to 6,643 feet (2,025 m) at the summit of Clingmans Dome. Within the park a total of 16 mountains reach higher than 6,000 feet (1829 m)
- the abundant rainfall
- old growth forests
- 10,000 species of plants(leafy trees, coniferous trees, flowering plant species etc) and animals(lungless salamanders, black bear population etc.); 90,000 undocumented species

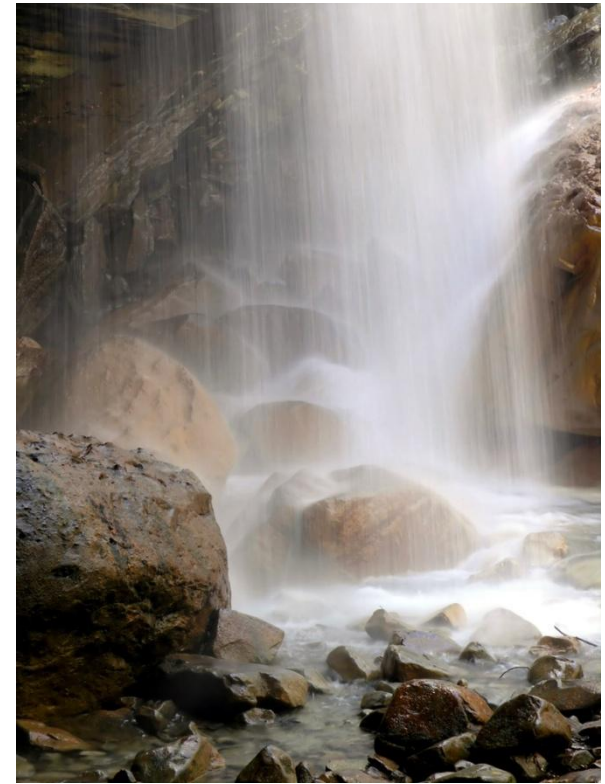


NATURAL FEATURES

Fur forest



Base of Big Laurel Falls



ATTRACTIONS AND ACTIVITIES

ranger stations :

- ❑ Sugarlands Visitors' Center near the Gatlinburg entrance to the park
- ❑ Oconaluftee Visitors' Center near Cherokee
- ❑ North Carolina at the eastern entrance to the park
 - exhibits on wildlife, geology, and the history of the park, sell books, maps, souvenirs ; no entry fee to the park



ATTRACTIONS AND ACTIVITIES

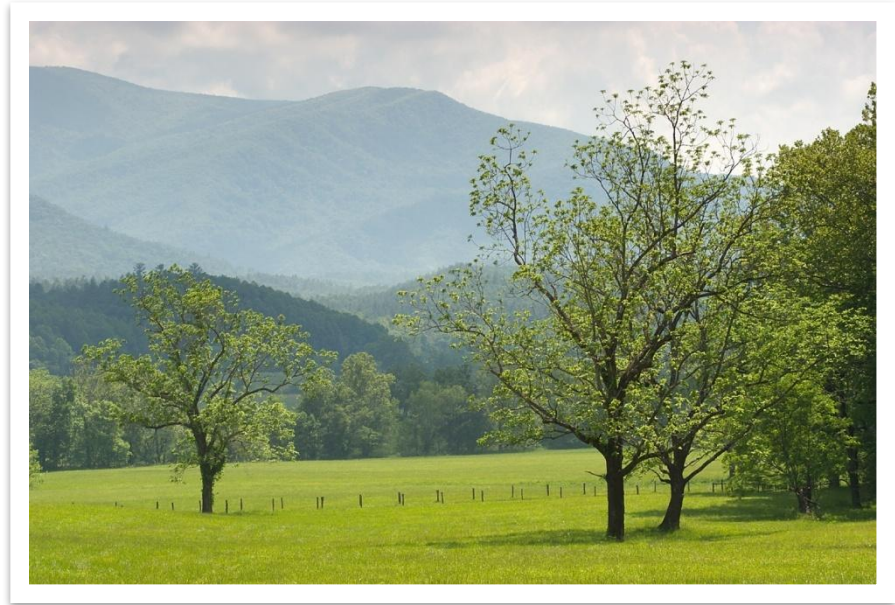
Newfound Gap Road

- automobile access to many trailheads and overlooks
- At an elevation of 5,048 feet (1,539 m), it is the lowest gap in the mountains and is situated near the center of the park, on the Tennessee/North Carolina state line



ATTRACTIONS AND ACTIVITIES

- Cades Cove, a valley with a number of preserved historic buildings including log cabins, barns, and churches
- historical areas: Roaring Fork, Cataloochee, Elkmont, the Mountain Farm Museum and Mingus Mill at Oconaluftee



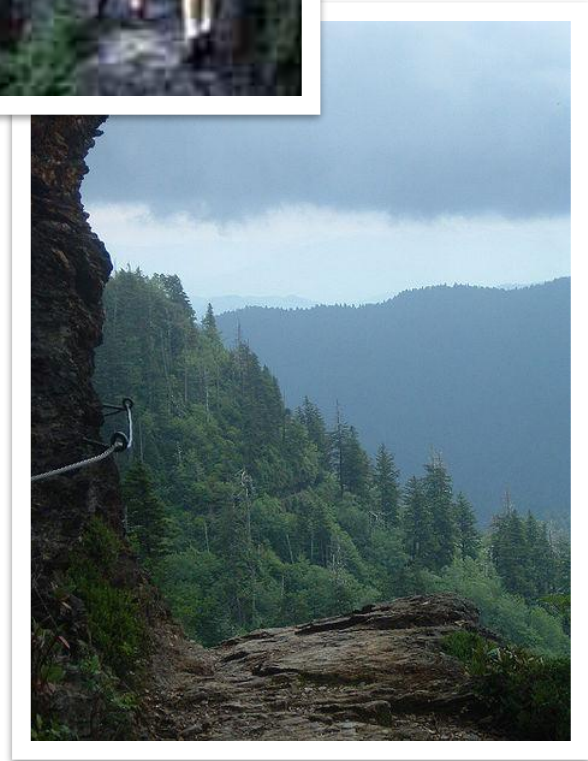
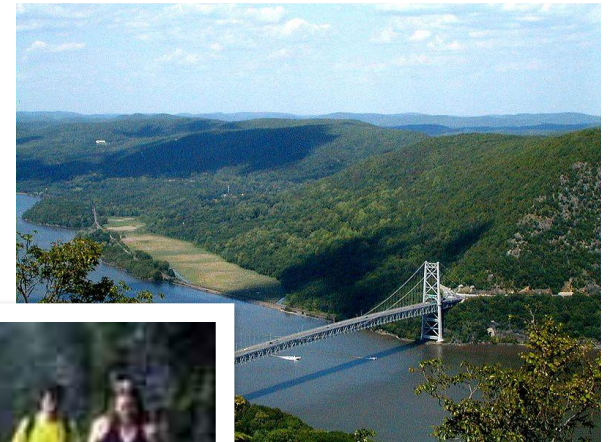
ATTRACTIONS AND ACTIVITIES

Hiking

850 miles (1,368 km) of trails

- Appalachian Trail
- Alum Cave Trail
- the pinnacle of the Chimney Tops

- The Laurel Falls Trail
- Clingman's Dome Trail



ATTRACTIONS AND ACTIVITIES

Hiking

the Clingman's Dome Trail



ATTRACTIONS AND ACTIVITIES

- sightseeing
- fishing (especially fly fishing)
- horseback riding
- backpacking
- camping

