

Увлекательные ребусы

Мутьева М.В.

a

,



ай

A large, stylized red Cyrillic letter 'а' is centered on a white background. Inside the upper loop of the 'а', the letters 'а' and 'й' are written in a smaller font. The 'а' is red and the 'й' is black. The entire graphic is set within a white rounded rectangle with a red border, which is itself on a blue gradient background.

ба





Ka

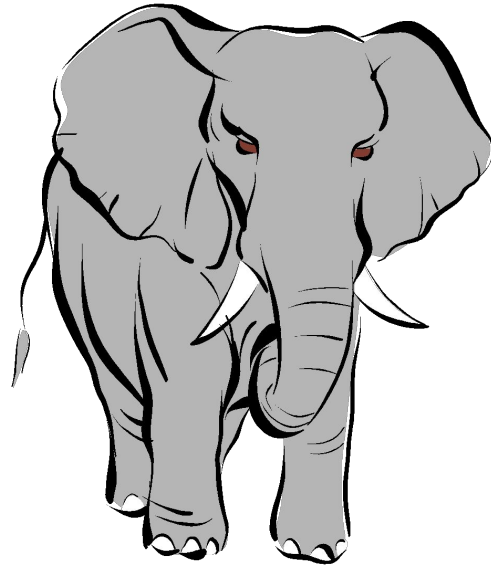


y

~~e~~

а

”



K

e



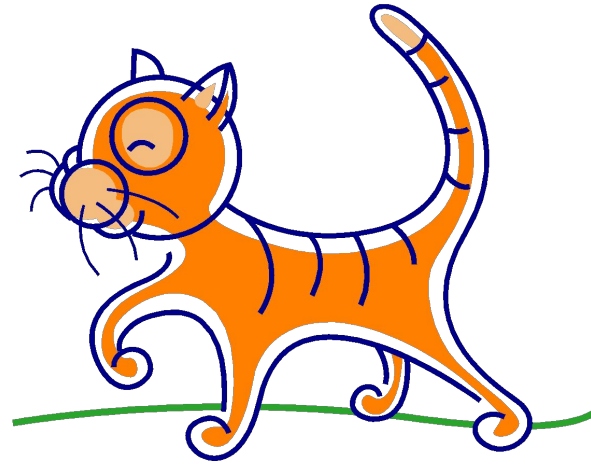
;



рОН

A large, thick red ring is centered on the page. Overlaid on the top portion of the ring are the Cyrillic letters 'рОН' in a bold, black, serif font. The 'р' is lowercase and positioned to the left of the 'ОН', which are uppercase. The entire graphic is set against a white background with a dark blue border.

100



” ”

Γε





ka



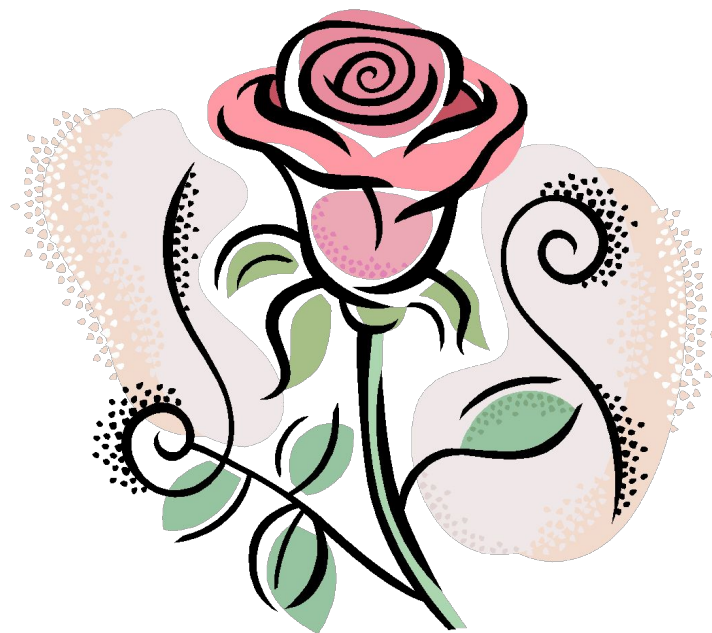
~~Л~~



’

НИК

Г



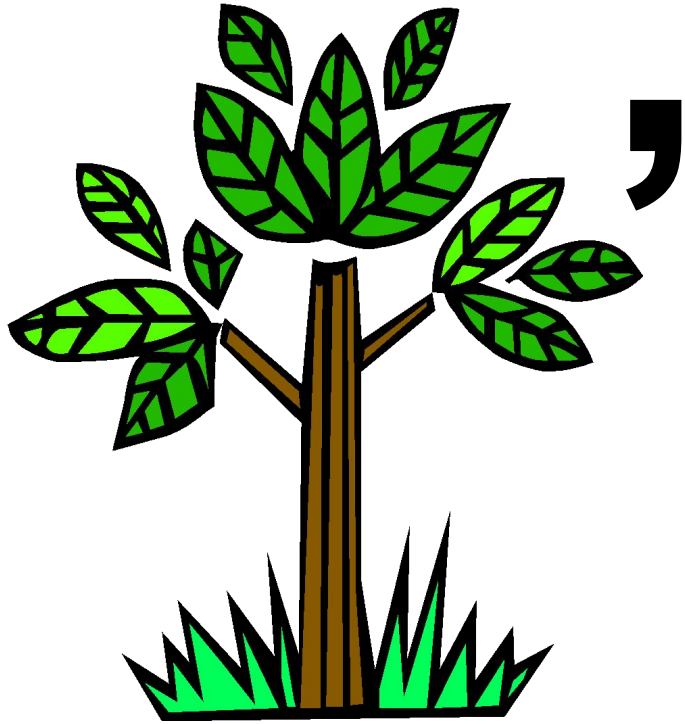
Г



”



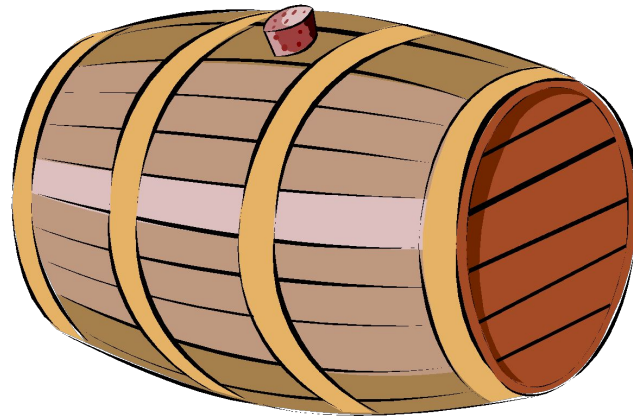
”



ДОГО Р

Д

,





ДЯТ



,

e



ЖК

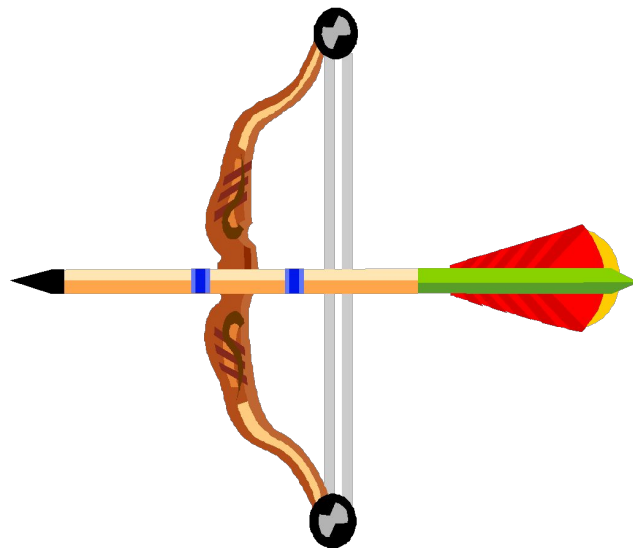
Ж

~~Р~~

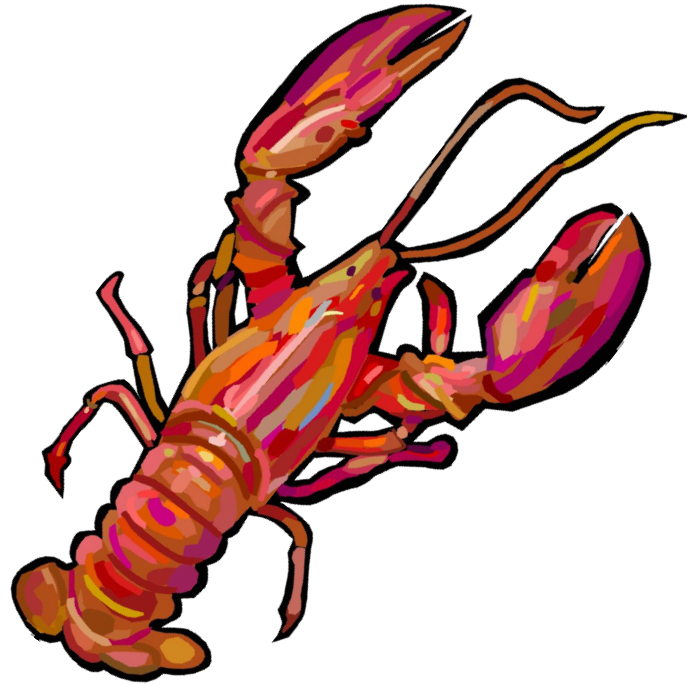


Ж

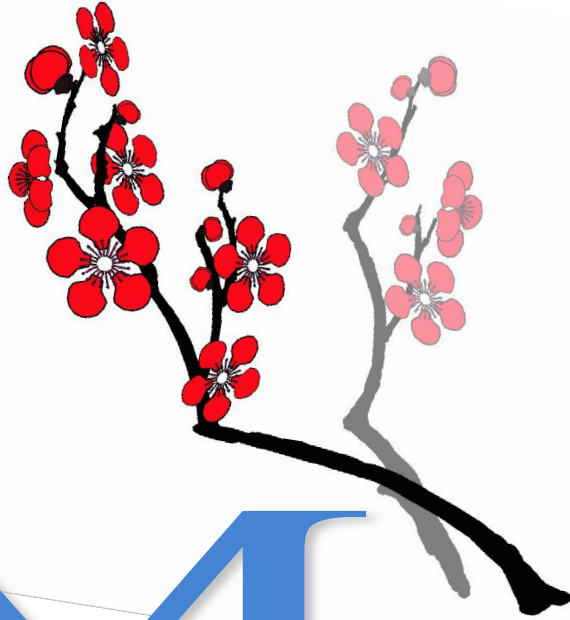
~~Д~~



T
B



;



M

MIO

за Н
р



ЯР

ЦР

З

~~Д~~



3 НОК

ЗИ



,

И



,

КИ

К

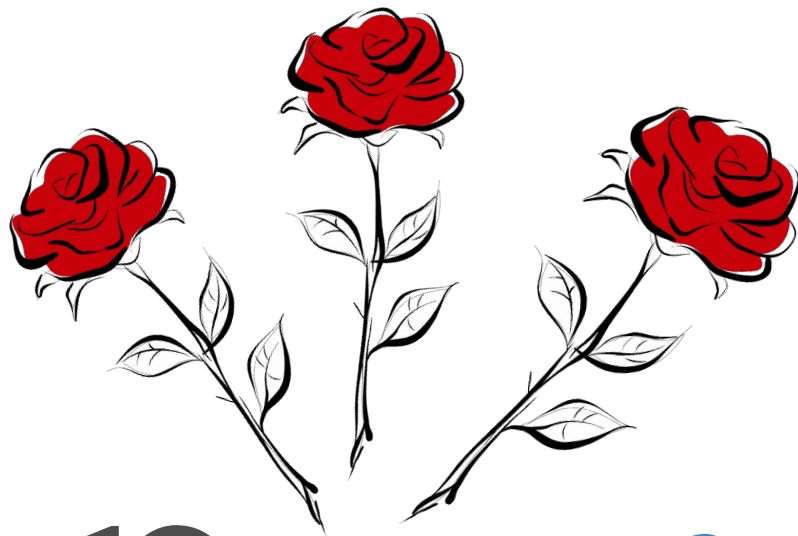
~~И~~



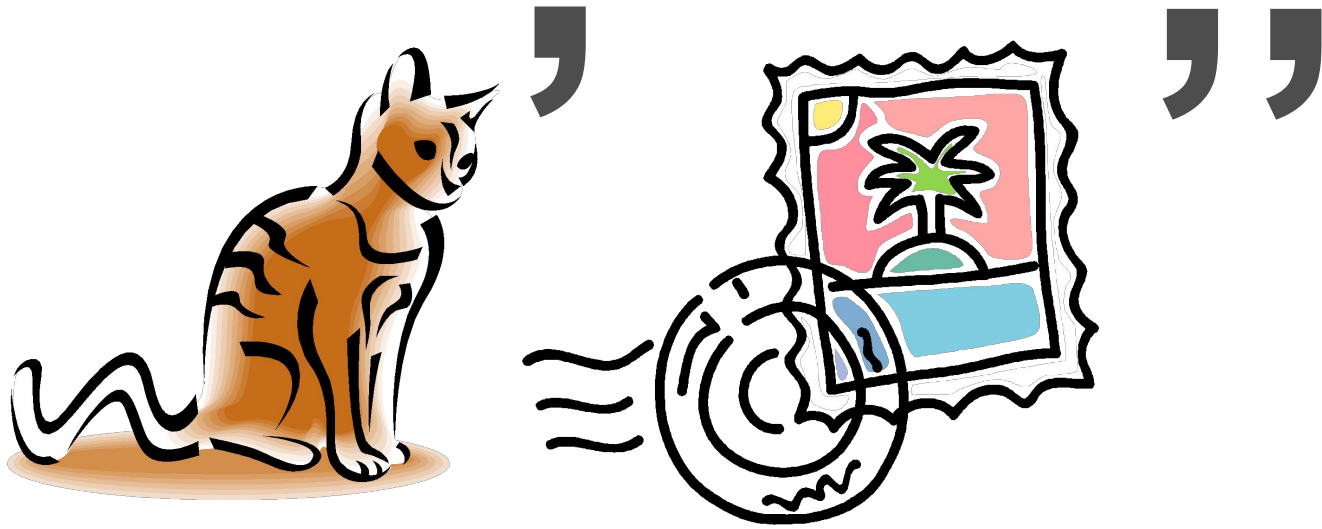
3

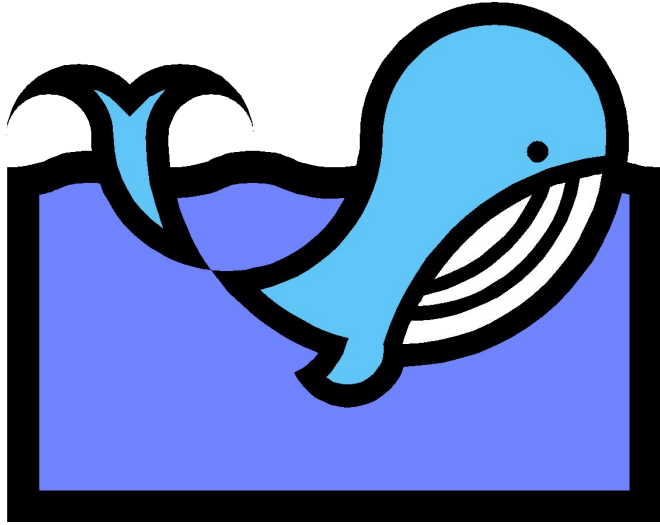
~~c~~





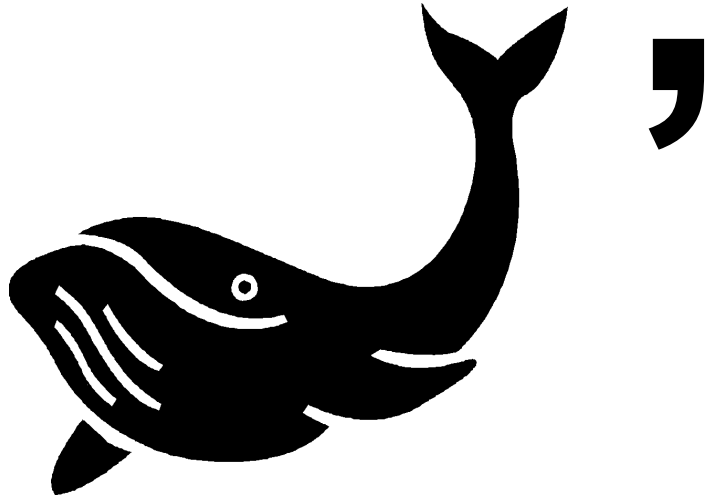
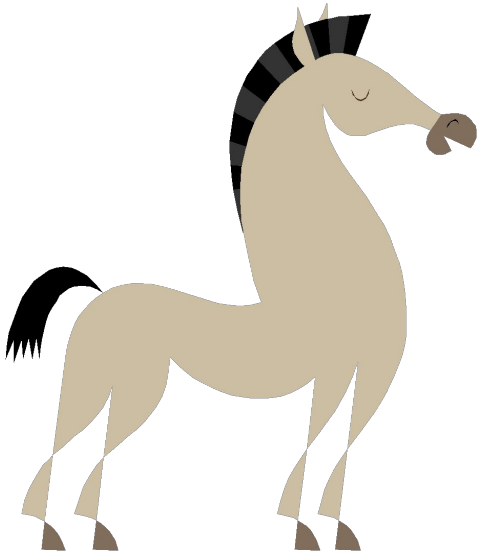
p = K





O

~~II~~



K

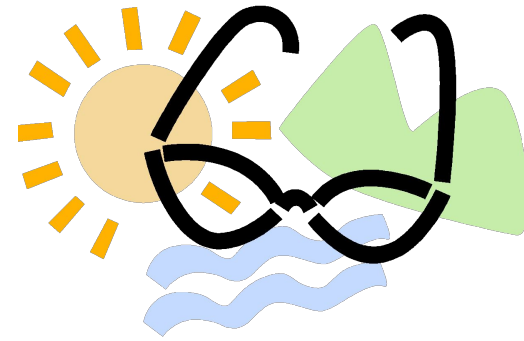




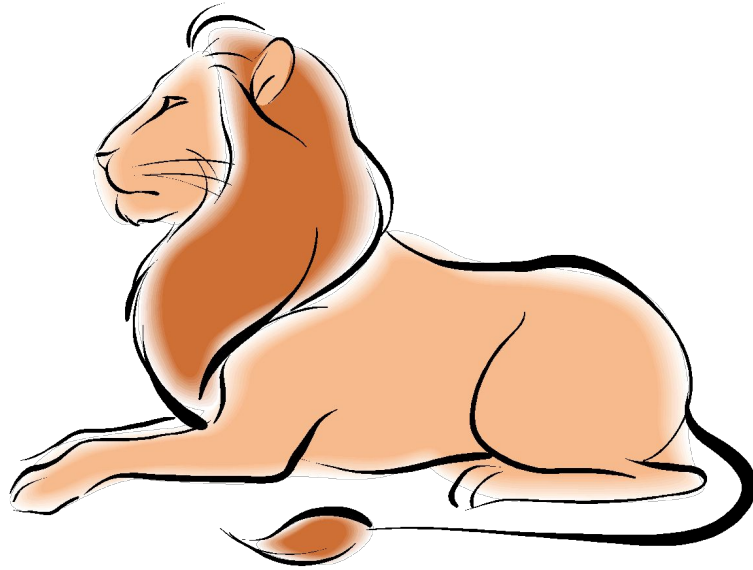
3 = c



,

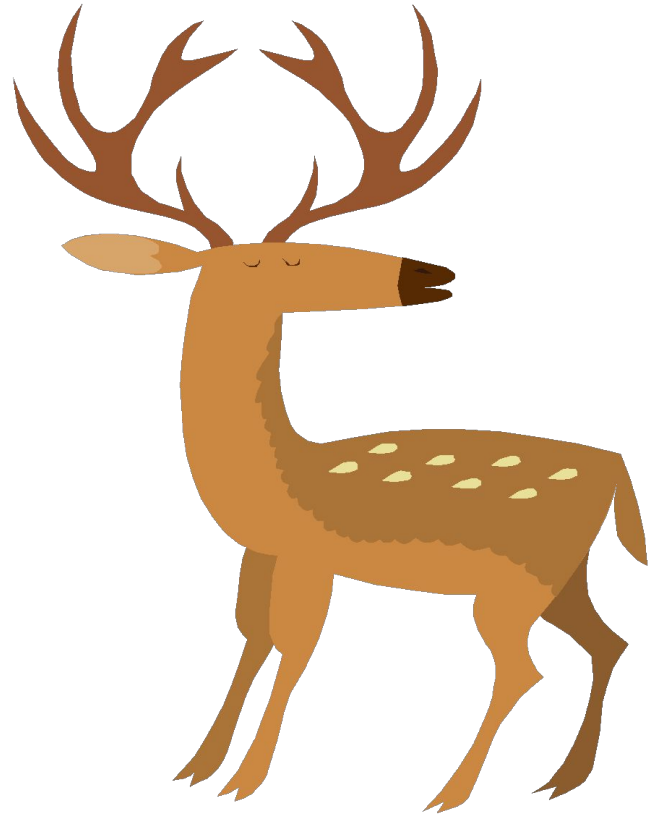


ЛАС.



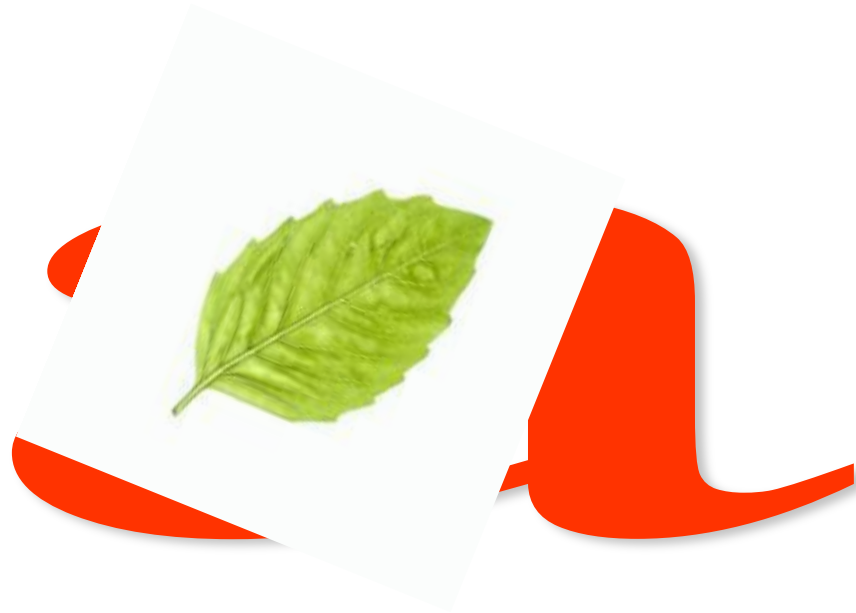
$B = C$

;





T = a





Л

~~Ш~~



та

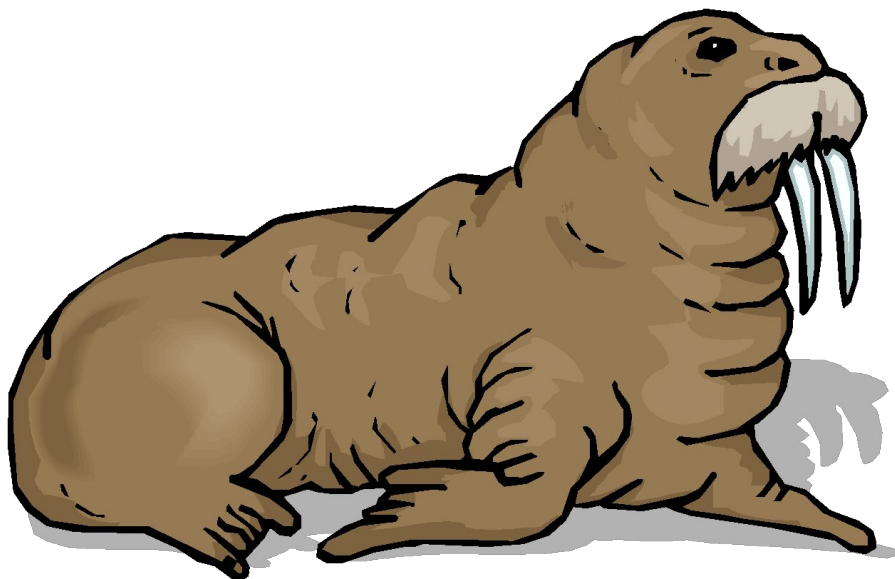
я=е



”

KO

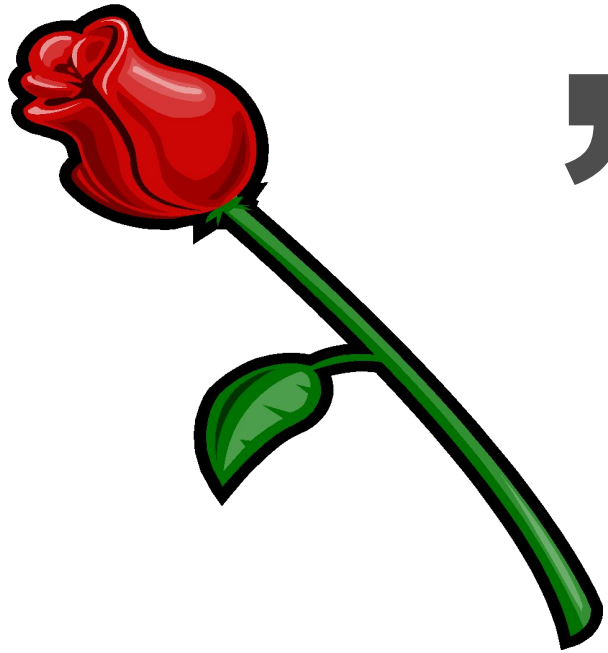
”



е

~~ж~~

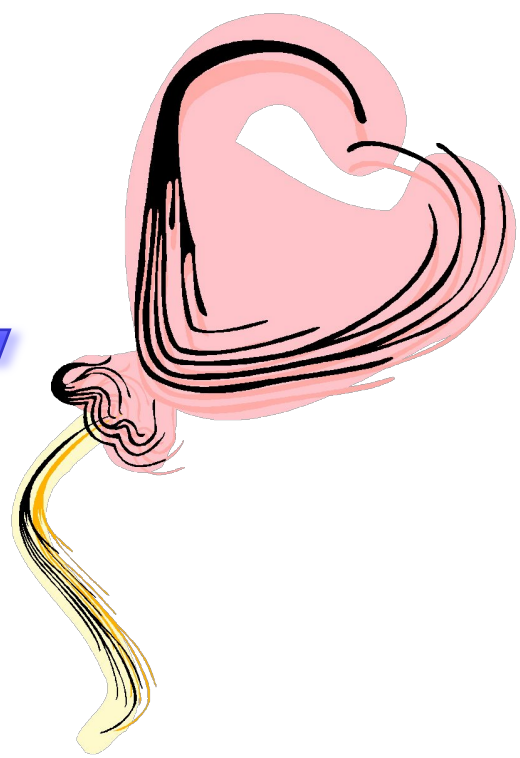
MO



,

a

T



,

KA



y

НИ.

öë

,





,



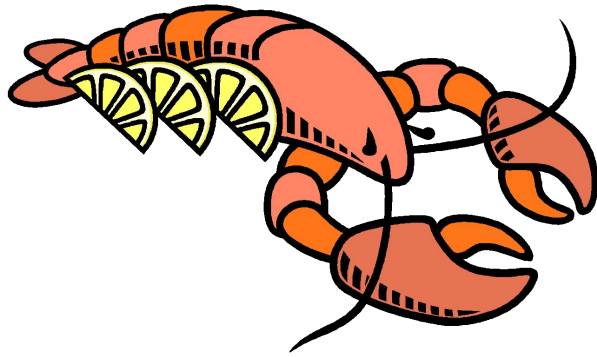
”

”





””””



eta

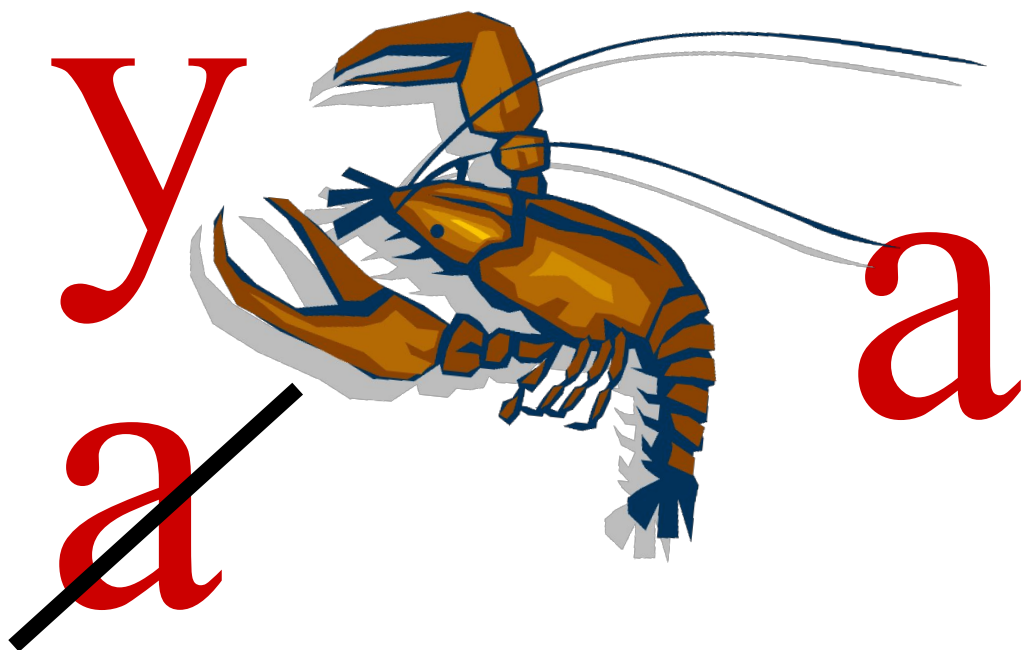
,



a



$K = p$

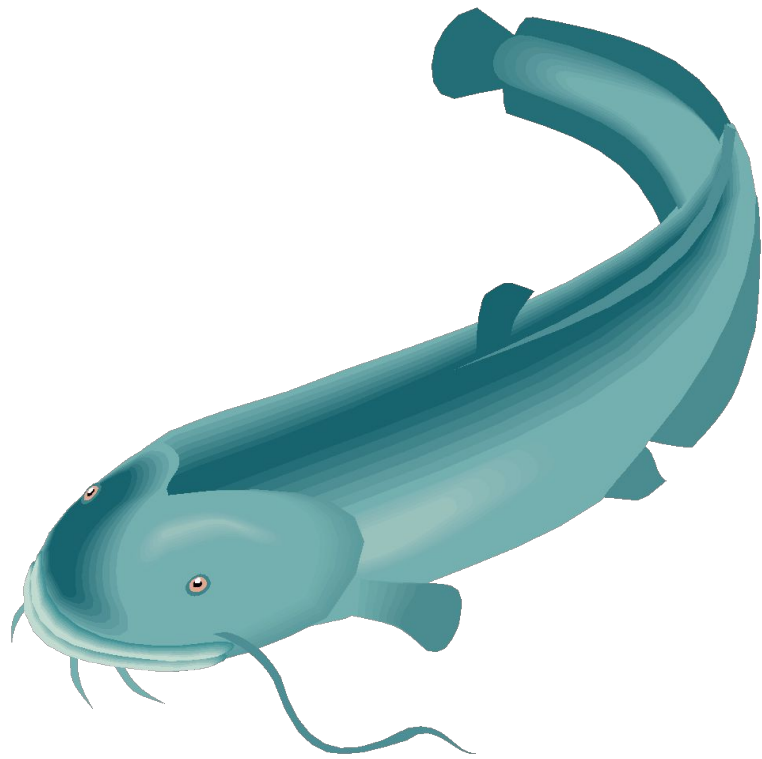




B



K



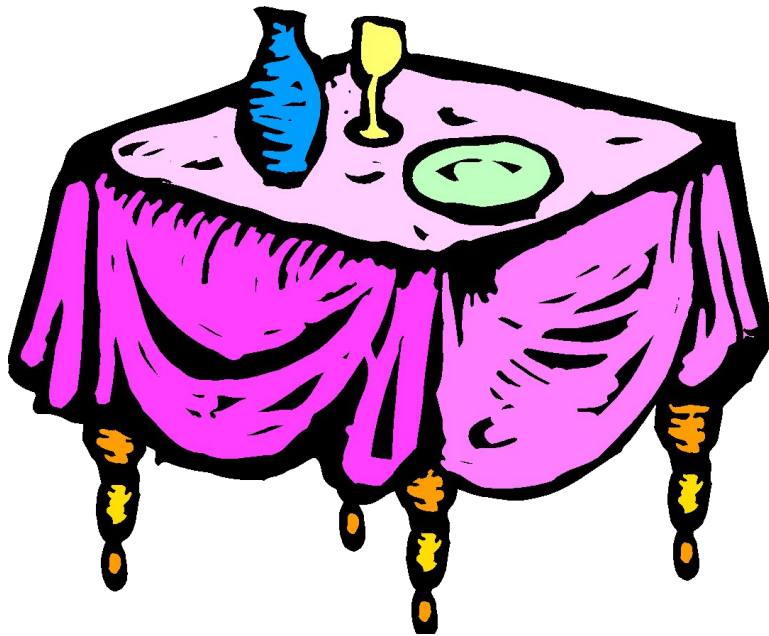
K

~~M~~



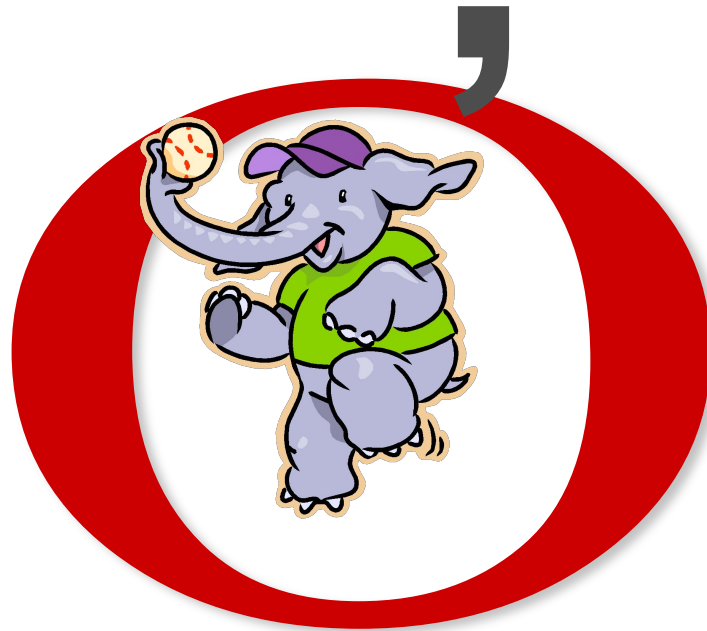
$$y=0$$

100 лб



y

~~o~~



стре



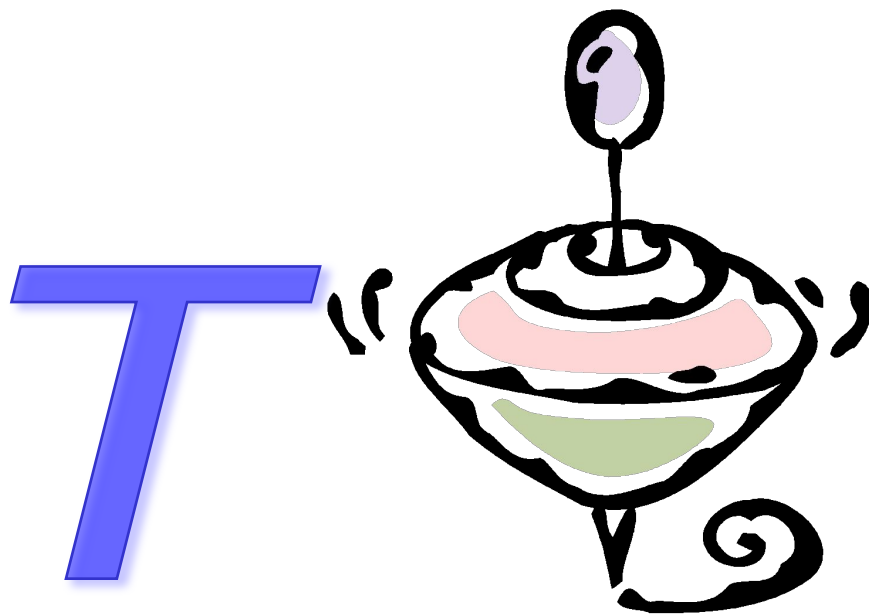
те  изор

ТМ



”





у

~~Ю~~

а
ТЫК



Ц

~~ТК~~

y.

HOT

ф а
н

ΦΟΡ.

XO



K

~~Ч~~



Ш=Й

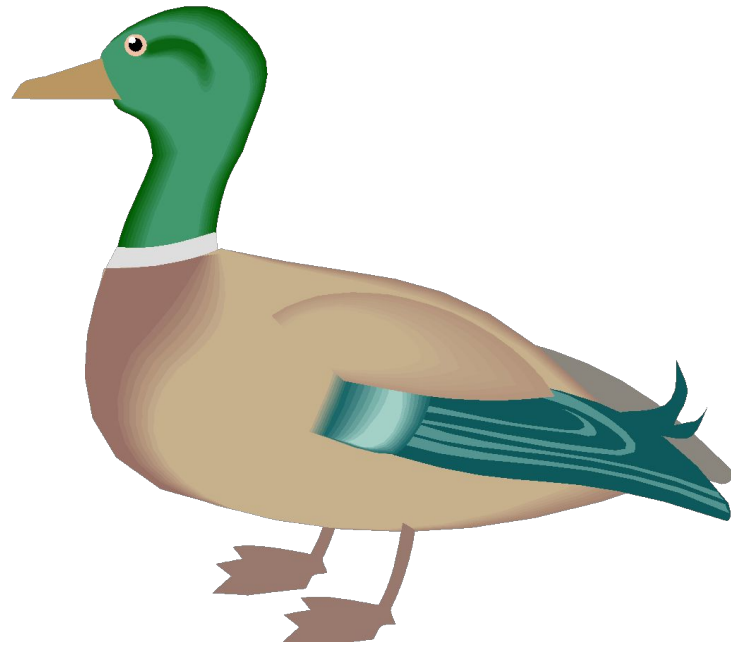


φ

”

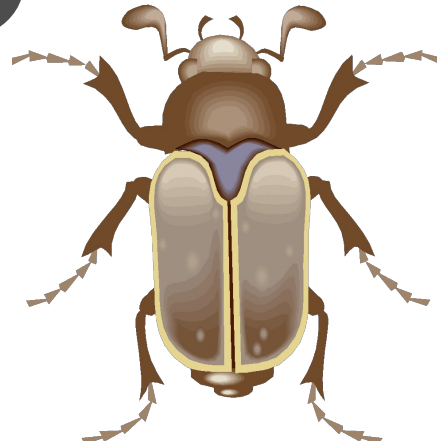


III



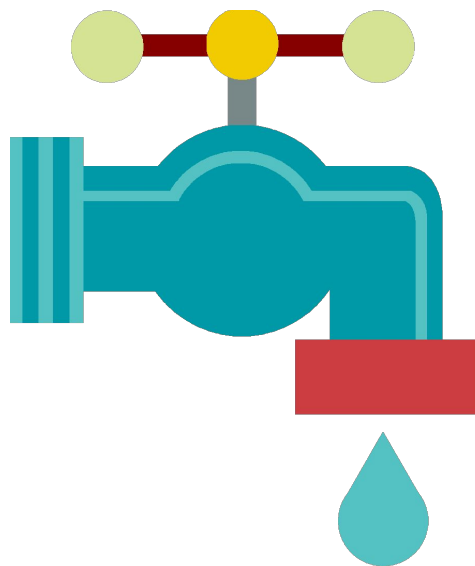
Щ

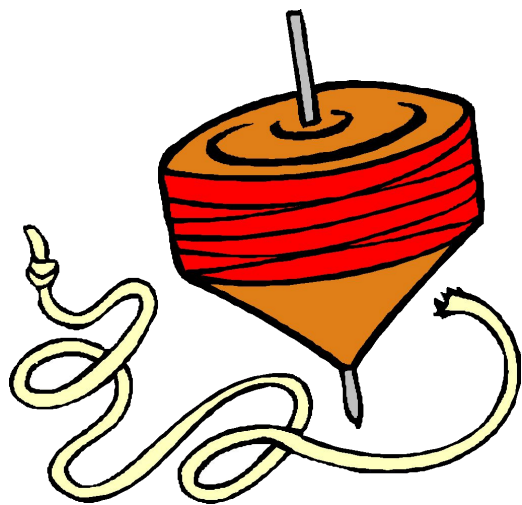
,



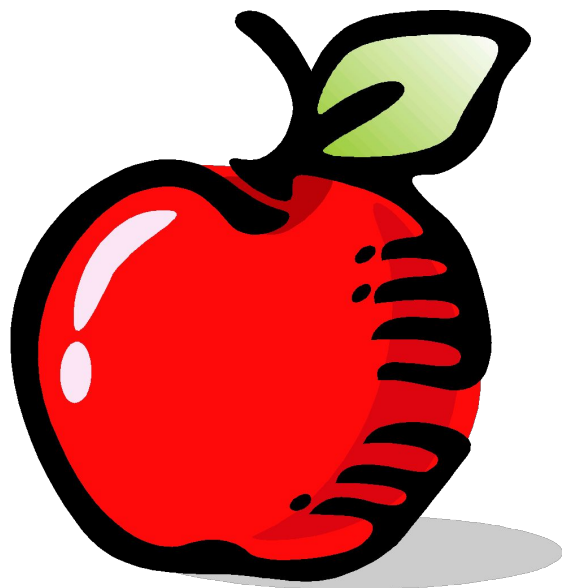
а

Э





л = р



“

ЯН