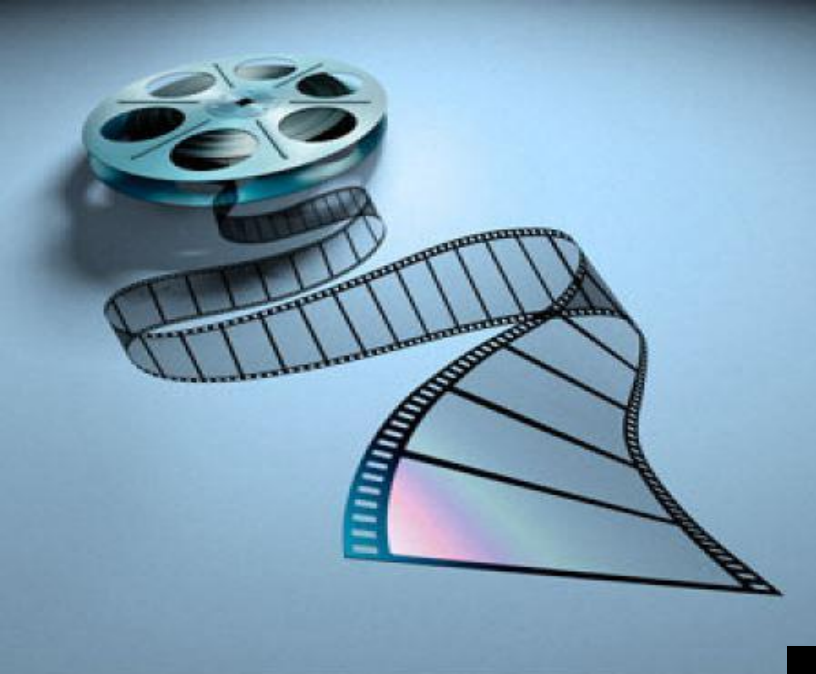
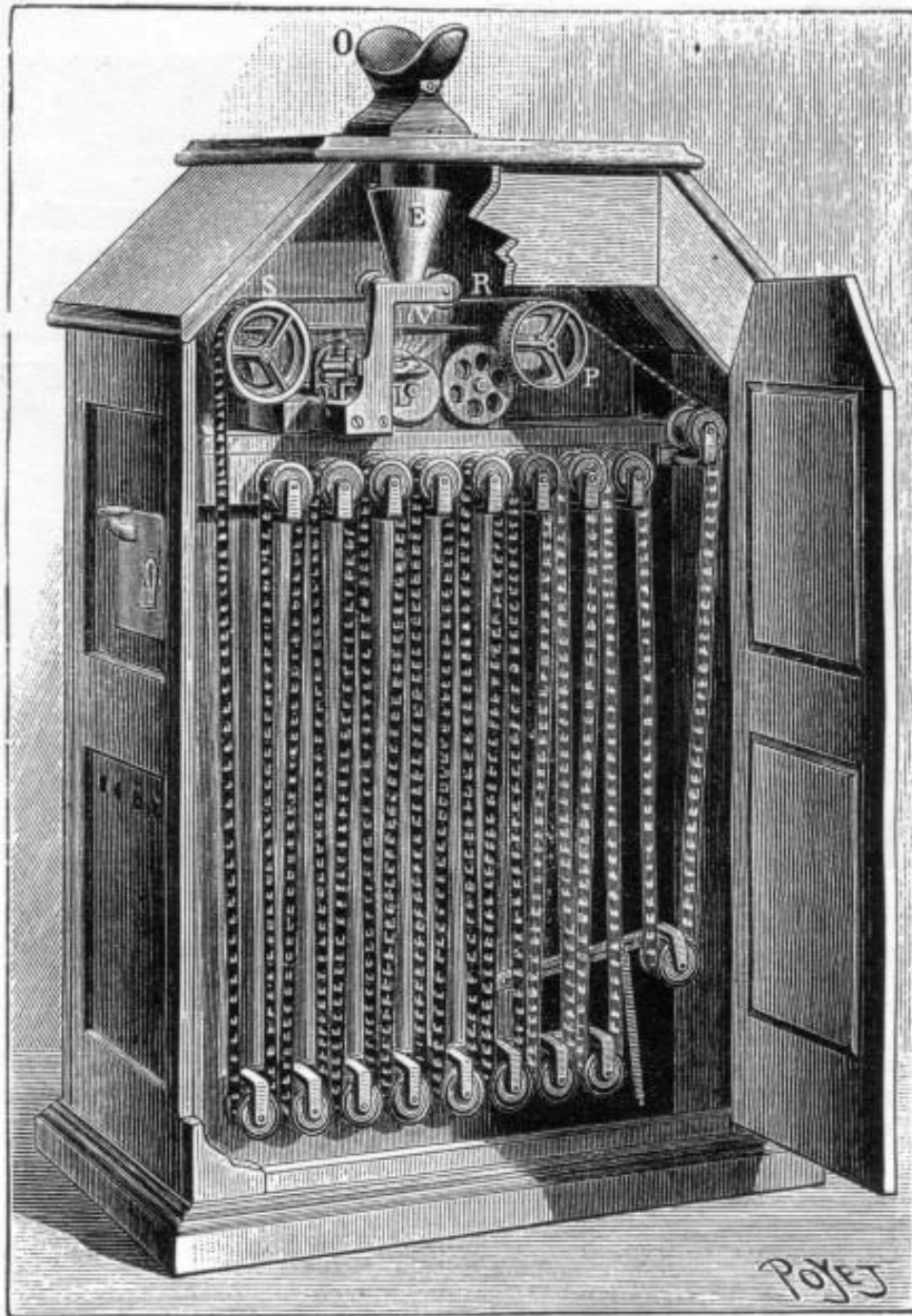
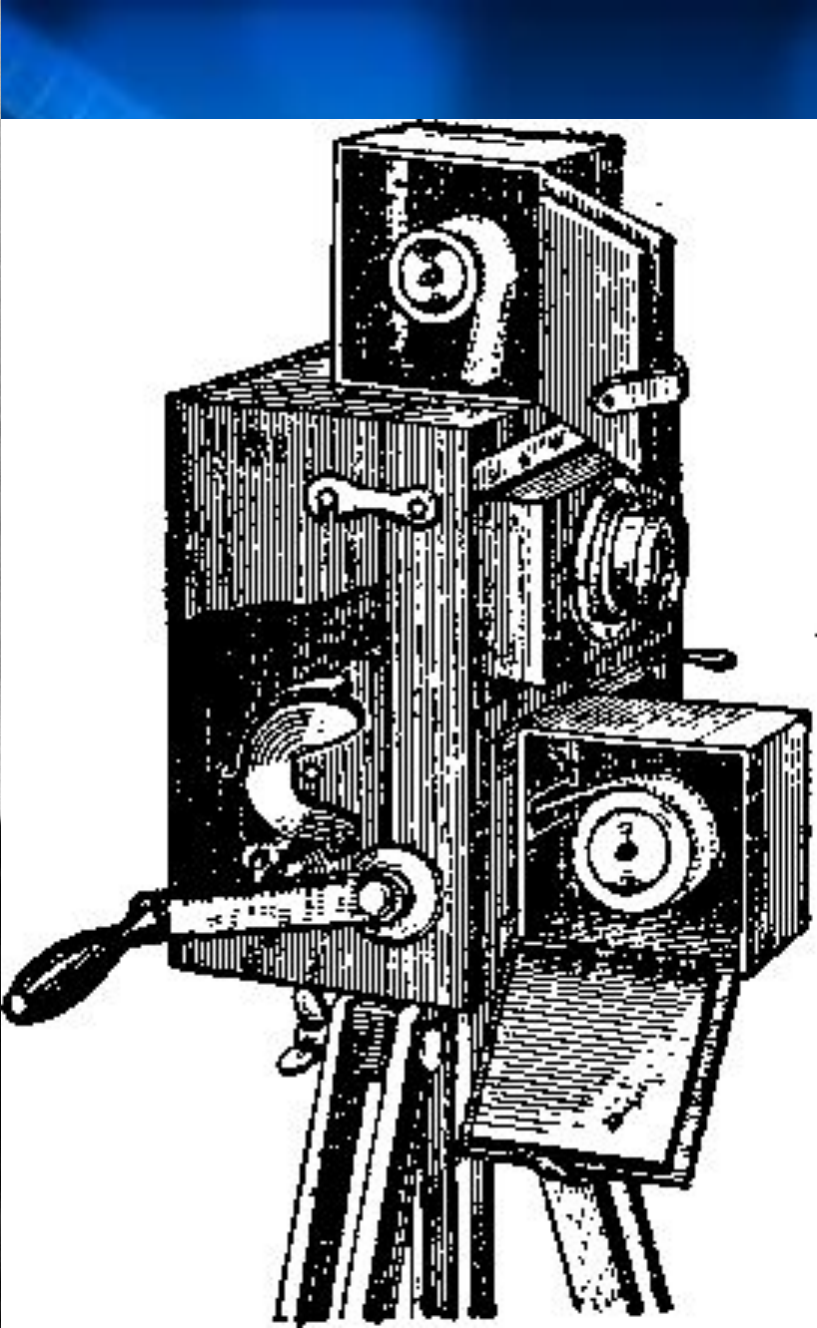


The background is a monochromatic blue scene. In the foreground, a movie camera is partially visible, with its lens and various mechanical components. A film strip is draped across the scene, looping around the camera and extending towards the top right. The lighting is dramatic, with highlights on the camera's metal parts and the film strip's sprocket holes.

Кинематограф







The background is a monochromatic blue scene. It features a film strip that curves across the frame from the top left towards the bottom right. In the lower-left foreground, a movie camera is visible, with its lens and various mechanical parts clearly defined. The overall aesthetic is that of a classic film industry graphic.

Мультипликация

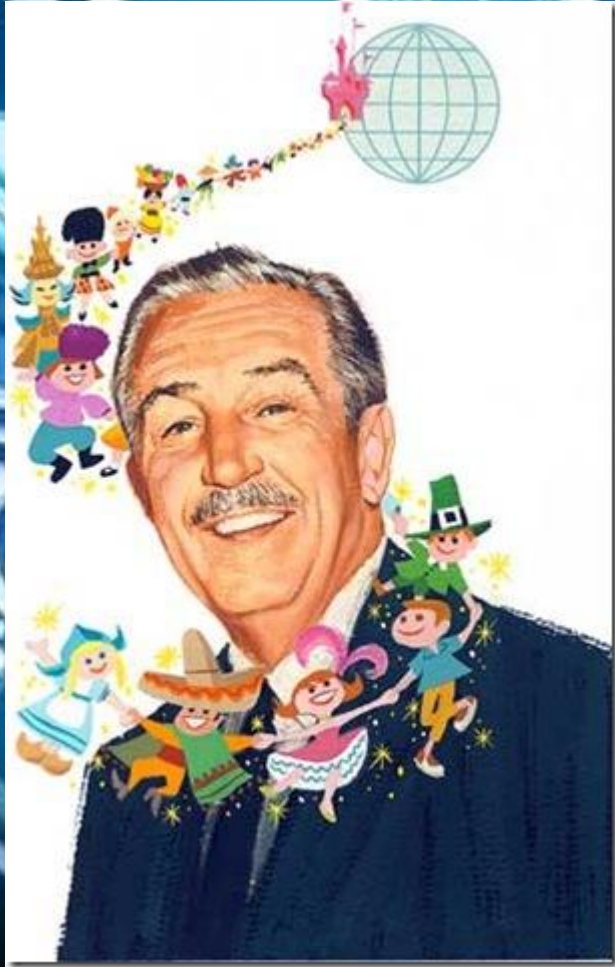




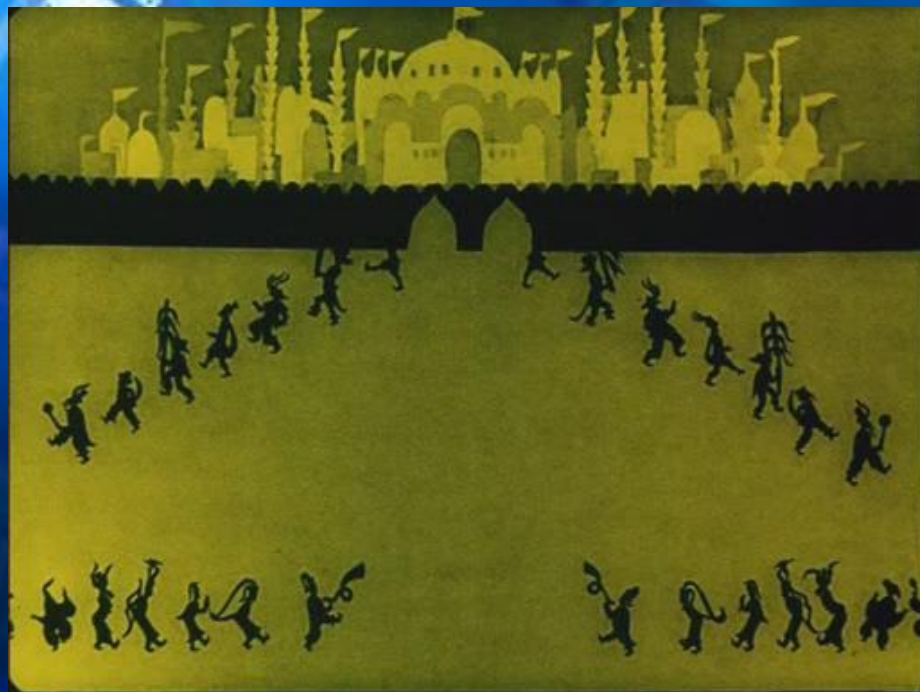
Самый первый мультфильм



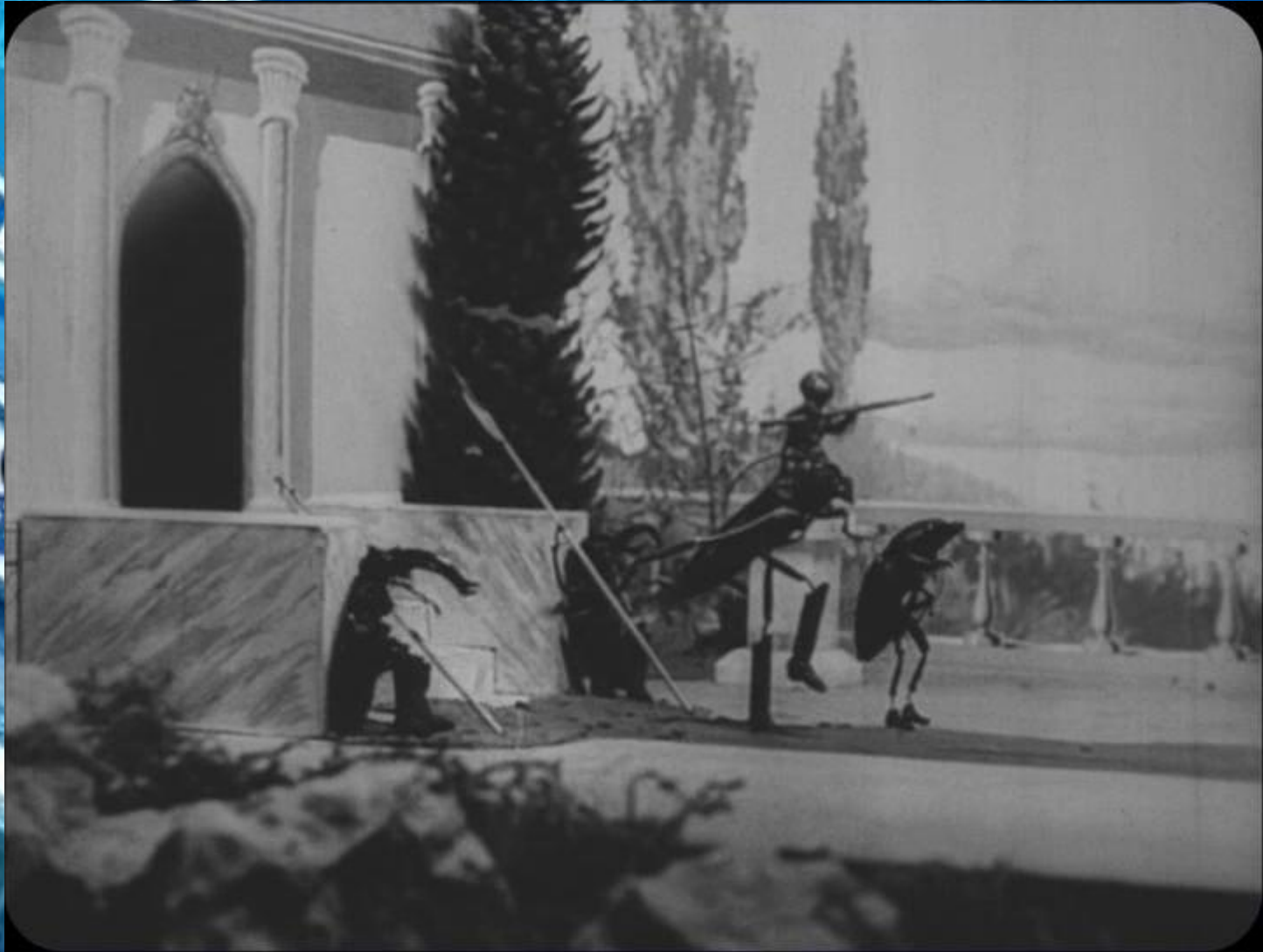
Уолт Дисней



Первый полнометражные мультфильмы



Первый советский мультфильм



Классическая покадровая прорисовка



Использование в качестве моделей персонажей живых актеров



Мультфильм ТЕНИ



Пластилиновая мультипликация



Кукольная анимация



Знаменитые советские мультфильмы





Советский «Ну,
погоди»



Современная версия

