

MAN Diesel PrimeServ Academy

Engine Operation



Going through all screens:

- Alarms...
- Engine:
- Auxiliaries...
- Maintenance...
- Admin...

Engine: Operation



0 0 15 0

Engine ▶ Operation 2006-09-18 10:53:18

Main State

Standby

Command [RPM]

ECR 92.6

LOP 92.6

Speed [RPM]

Speed Modifier

Set Point 92.6 Actual 92.6

Fuel Index [%]

Index limiter Scav Air Pres

Limiter 96 Actual 71

Running Mode

Emission

Governor Mode

RPM Control

Start Air

24.1 Bar

Inlet Oil

2.3 Bar

Hyd. Oil

196 Bar

Scav. Air

1.57 Bar

HPS

Auto

Lubricator

Running

Auxiliary Blowers

Auto Stopped

PTO

Off

Engine Start

Start Status Running

Prepare Start Slow Turn Auto Air Run

Alarms...

Engine ▶

Operation

Status

Process Information

Cylinder Load

Cylinder Pressure

Auxiliaries...

Maintenance...

Admin...

Access

Access Level



0 0 15 0

Engine ▶ Operation 2006-09-18 13:31:20

Main State At Sea	Command [RPM] ECR 88.0 LOP 88.0	Speed [RPM] Speed Modifier RPM Fine Adjust Set Point Actual	Fuel Index [%] Index limiter Scav Air Pres Limiter Actual
-----------------------------	-----------------------------------------------------	----------------------------------------------------------------------	--------------------------------------------------------------------

Change Access Level

Password for Chief Level

Operator Level Chief Level X

1 2 3 4 5 6 7 8 9 0 - ← BS

Q W E R T Y U I O P _ ←

* A S D F G H J K L ; :

/ Z X C V B N M , . Space

PTO
Off

Engine Start

Start Status
Running

Prepare Start Slow Turn **Auto** Air Run

Alarms...
Engine ▶
Operation
Status
Process Information
Cylinder Load
Cylinder Pressure
Auxiliaries...
Maintenance...
Admin...
Access

Engine: Status – Start blocked



0 0 15 0

Engine ▶ Status 2006-09-20 09:37:45

Main State

Standby

Engine Not Ready

Start blocked

Start Conditions

- ! Main Starting Valve in service position
- ✓ Main Starting Valve blocked
- ! Start Air Distribution System in service
- ✓ Start Air Distribution System blocked
- ✓ Starting Air Pressure
- ✓ Control Air Pressure
- ⋮ Control Air vented
- ! Turning Gear disengaged
- ✓ Aux. Blowers
- ✓ Hyd. Power Supply
- ✓ Hyd. Pressure

Start Air **24.1 Bar**

Turning Gear **Engaged**

Control Air **6.0 Bar**

Start Valve Cyl.-1 ...2 ...#

Blowers **Stopped**

Crankshaft **342.0**

Hyd. Oil **176 Bar**

Start Status **Stopped**

Details

Alarms...

Engine ▶

Operation

Status

Process Information

Cylinder Load

Cylinder Pressure

Auxiliaries...

Maintenance...

Admin...

Access

Chief

Engine: Status



0 0 15 0

Engine ▶ Status 2006-09-18 10:54:18

Main State
Standby

Start Conditions

- ✓ Main Starting Valve in service position
- ... Main Starting Valve blocked
- ✓ Start Air Distribution System in service
- ... Start Air Distribution System blocked
- ✓ Starting Air Pressure
- ✓ Control Air Pressure
- ... Control Air vented
- ✓ Turning Gear disengaged
- ✓ Aux. Blowers
- ✓ Hyd. Power Supply
- ✓ Hyd. Pressure

Start Air **24.1 Bar**

Main... Slow...

Start Valve Cyl.-1 ...2 ...#

Blowers **Stopped** Hyd. Oil **196 Bar**

Crankshaft

Turning Gear **Disengaged**

Control Air **6.0 Bar**

Start Status **Running** Details

Alarms...
Engine ▶
Operation
Status
Process Information
Cylinder Load
Cylinder Pressure
Auxiliaries...
Maintenance...
Admin...
Access

Engine: Process Information Running Mode



0 0 15 0

Engine ▶ Process Information ▶ 2006-09-18 10:57:39

Running Mode Speed Control

Running Mode	Speed Set Point [RPM]	Speed Actual [RPM]
Emission	92.6	92.5
Estimated Engine Load	Fuel Index Set Point	
57 %	71 %	
Maximum Pressure	Hyd. Oil Set Point	Hyd. Oil Actual
106 Bar	195 Bar	196 Bar
Compression Pressure		Pscav Actual
95 Bar		1.57 Bar
Pcomp/Pscav		
37.4		
Exh. Valve Open Timing		
114.8 °ATDC		

Alarms...
Engine ▶
Operation
Status
Process Information
Cylinder Load
Cylinder Pressure
Auxiliaries...
Maintenance...
Admin...
Access

Engine: Process Information Speed Control



ECUB_50324 | 13:28:50 | Ctrl air press low | Normal | - | - | 2 0 15 0

Engine ▶ Process Information ▶ 2006-09-18 13:28:19

Running Mode | Speed Control

Command [RPM]	Fine Adj.	Speed Set [RPM]	Index Limit [%]	Fuel Index [%]	Speed [RPM]
ECR	110.0	73.1	63	51	69.2

Speed Modifier

- Stabilising
- Stop
- Minimum Speed
- Maximum Speed
- Fixed Speed Set
- Shut Down
- Slow Down
- PTO
- ▶ Speed Ramp
- Load Program
- Barred Speed range
- RPM Fine Adjust

Governor / Limiter

- Start
- Chief
- ▶ Scav. air pressure
- Torque
- Hyd. Power Supply

▶ Active Modifier ▶ Active Limiter ▶ Nearest Limiter

Alarms...
Engine ▶
Operation
Status
Process Information
Cylinder Load
Cylinder Pressure
Auxiliaries...
Maintenance...
Admin...
Access
Chief

Engine: Cylinder Load



0 0 15 0

Engine ▶ Cylinder Load 2006-09-18 11:01:04

All 1 2 3 4 5 6 7 8 9 10 11 12

Offset High Load [%]

0	0	0	0	0	0	0	0	0	0	0	0	0
---	---	---	---	---	---	---	---	---	---	---	---	---

Offset Low Load [%]

0	0	0	0	0	0	0	0	0	0	0	0	0
---	---	---	---	---	---	---	---	---	---	---	---	---

Chief Index Limit [%]

110	100	110	110	110	110	110	110	110	110	110	110	110
-----	-----	-----	-----	-----	-----	-----	-----	-----	-----	-----	-----	-----

Exhaust Valve Operation

Enabled	Enabled	Enabled	Enabled	Enabled	Enabled	Enabled	Enabled	Enabled	Enabled	Enabled	Enabled	Enabled
---------	---------	---------	---------	---------	---------	---------	---------	---------	---------	---------	---------	---------

Alarms...

Engine ▶

Operation

Status

Process Information

Cylinder Load

Cylinder Pressure

Auxiliaries...

Maintenance...

Admin...

Access

Chief

Engine: Cylinder Pressure



0 0 15 0

Engine ▶ Cylinder Pressure 2006-09-18 11:01:30

All 1 2 3 4 5 6 7 8 9 10 11 12

Maximum Cylinder Pressure Offset [Bar]

0	0	---	---	---	---	---	---	---	---	---	---	---
-20	0	-	-	-	-	-	-	-	-	-	-	-
-	-	-	-	-	-	-	-	-	-	-	-	-

Compression Ratio Offset [-]

0.0	0.0	---	---	---	---	---	---	---	---	---	---	---
2	0	-	-	-	-	-	-	-	-	-	-	-
-	-	-	-	-	-	-	-	-	-	-	-	-

Exhaust Valve Open Timing Offset [DEG]

0.0	0.0	---	---	---	---	---	---	---	---	---	---	---
0	-1	-	-	-	-	-	-	-	-	-	-	-
-	-	-	-	-	-	-	-	-	-	-	-	-

Alarms...

Engine ▶

Operation

Status

Process Information

Cylinder Load

Cylinder Pressure

Auxiliaries...

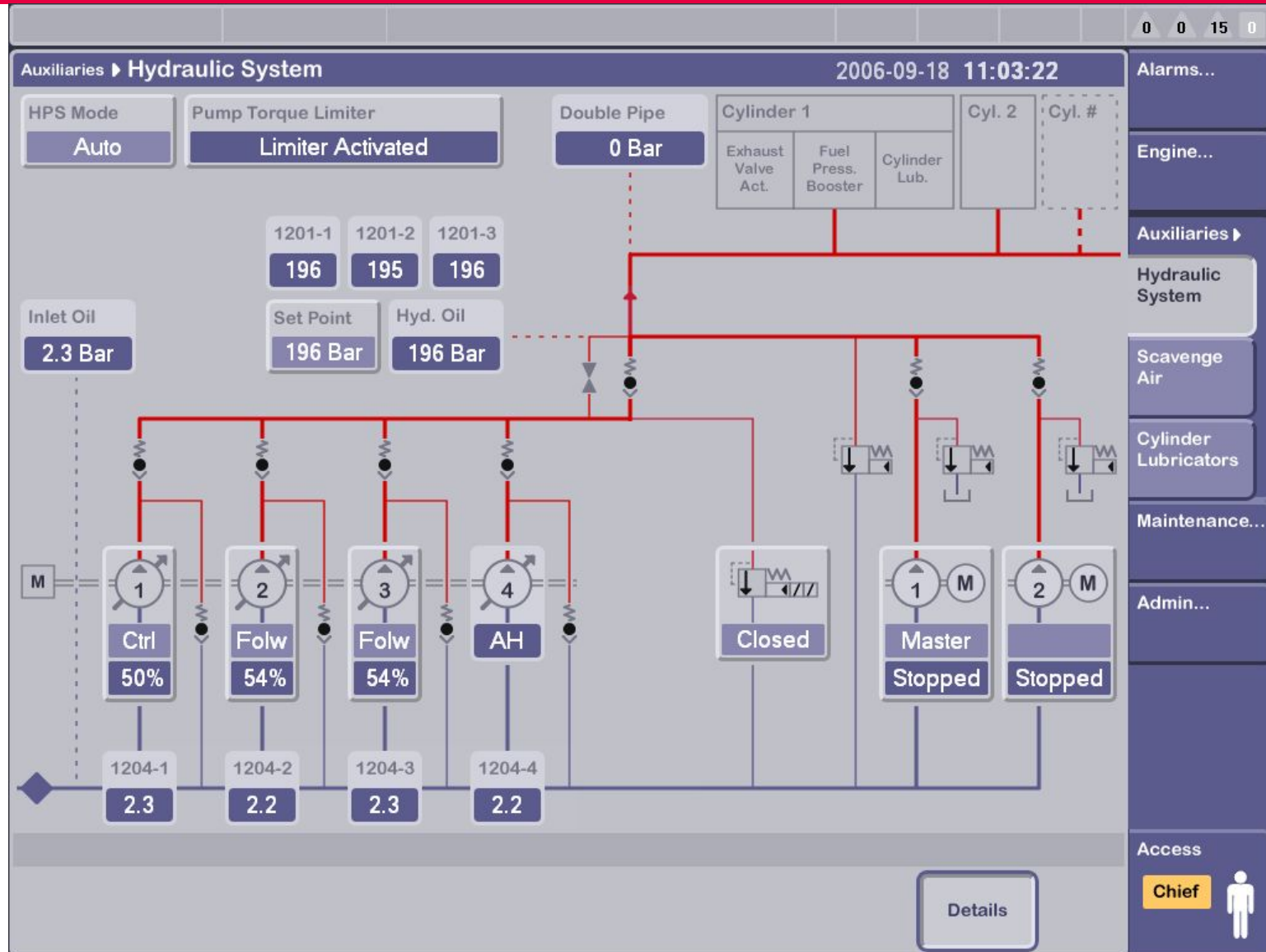
Maintenance...

Admin...

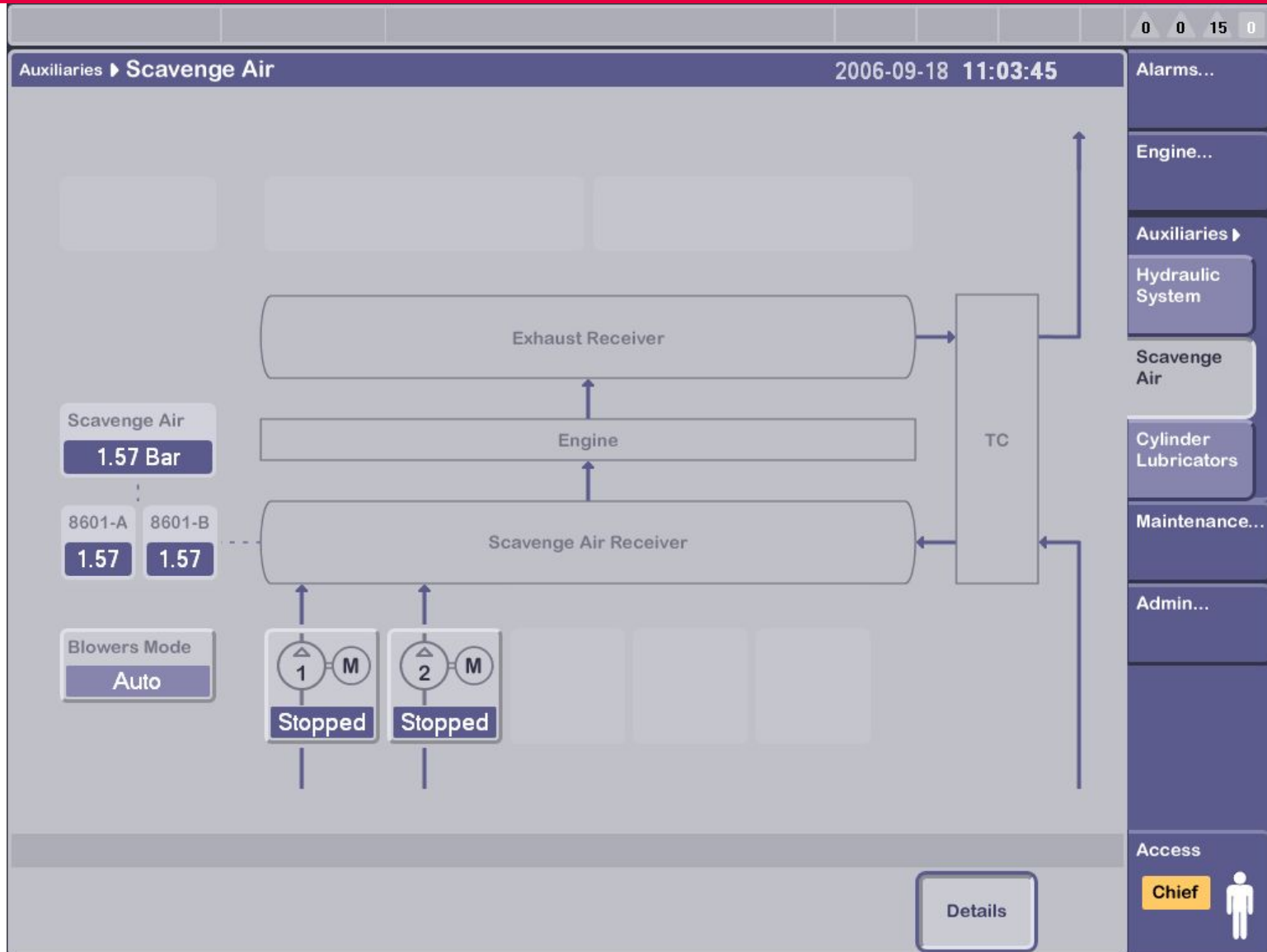
Access

Chief

Auxiliaries: Hydraulic System



Auxiliaries: Scavenge Air



Auxiliaries: Cylinder Lubricators



0 0 15 0

Auxiliaries ▶ Cylinder Lubricators 2006-09-18 11:07:45

Flow	Total	Prelube	LCD	S%	Feed Rate Factor	Basic Feed Rate	Min. Feed Rate												
35.4 l/h	16 l	Off	Off	2.0	0.30 g/kWhS%	0.60 g/kWh	0.5 g/kWh												
								1	2	3	4	5	6	7	8	9	10	11	12
Actual Feed Rate [g/kWh]								0.7	0.6	0.6	0.6	0.6	0.6	0.6	0.6	0.6	0.6	0.6	0.6
Feed Rate Adjust Factor								1.10	1.00	1.00	1.00	1.00	1.00	1.00	1.00	1.00	1.00	1.00	1.00
Running In [%]								0	0	0	0	0	0	0	0	0	0	0	0
Lubricator Test Sequence								Off	---	---	---	---	---	---	---	---	---	---	---
S%																			
Current	New																		
2.0	2.0																		
<div style="float: right;"> Apply </div>																			

Alarms...

Engine...

Auxiliaries ▶

Hydraulic System

Scavenge Air

Cylinder Lubricators

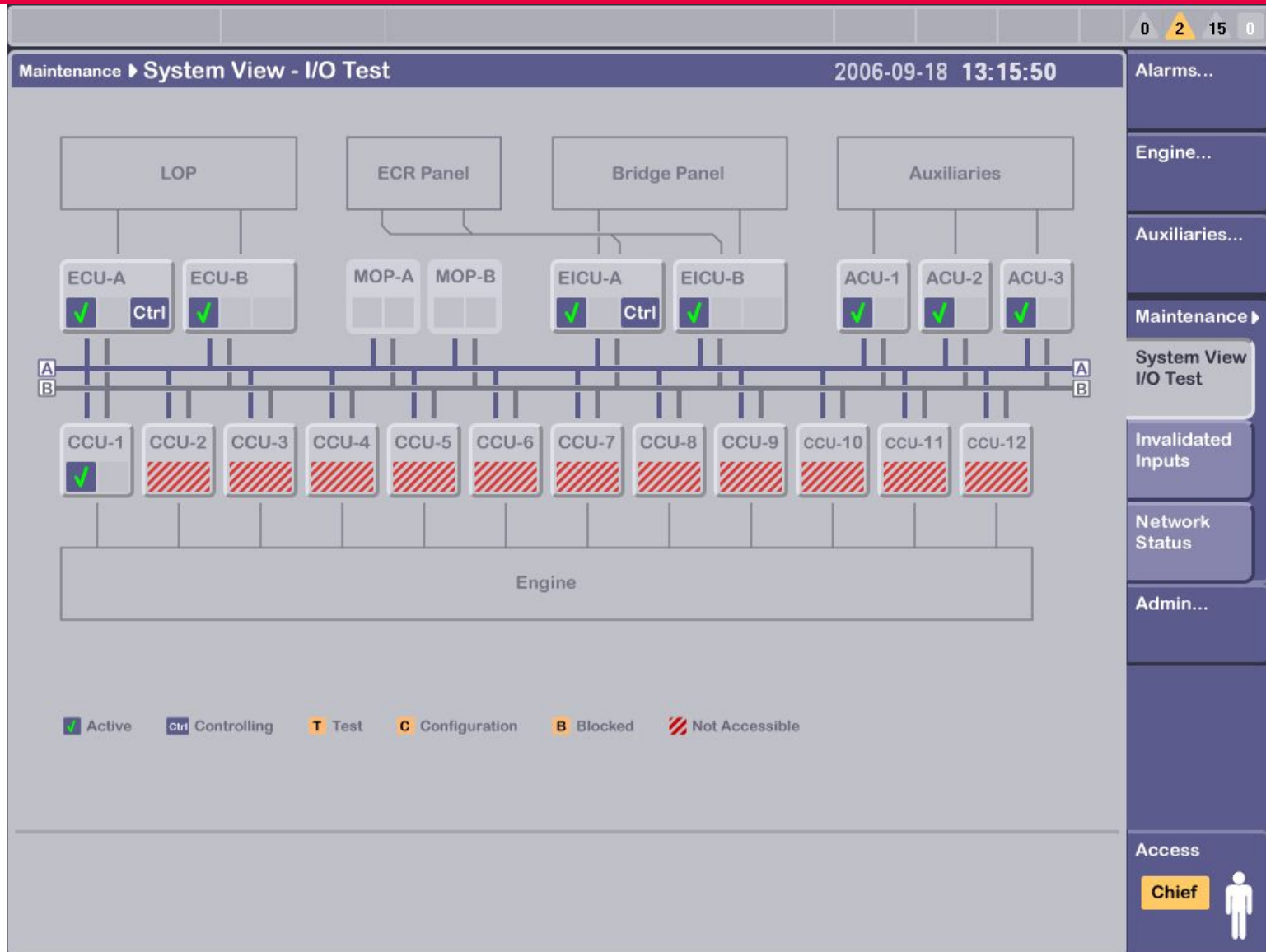
Maintenance...

Admin...

Access

Chief

Maintenance: System View, I/O Test



Maintenance: System View, I/O Test ECU-A



Maintenance ▶ System View - I/O Test 2006-09-18 13:16:23

ECU-A

MPC Mode: **Normal**

A Analog Input A Analog Output Invalidated ▲ Alarm
D Digital Input D Digital Output Not used N/A Not available

#	Info	ID	Description	Process Value	#	Info	ID	Description	Process Value
20					44	D	4001-B	marker master	False
21	D	2152-A	Local: Increase Limiter	OFF	45	D	4002-B	marker slave	True
22	D	2151-A	Local: Stop	OFF	46	D	4003-B	quadrature master	False
23	D	2114-A	Local: Air Run	OFF	47	D	4004-B	quadrature slave	True
24	D	2115-A	Local: Slow Turn	OFF	48				
25	D	2153-A	Local: Take CMD	OFF	49				
26	D	2156-A	Local: SpeedSet Up Butt	OFF	50				
27	D	2157-A	Local: SpeedSet Down Bu	OFF	51				
30	D	2155-A	Local: Start	OFF	52	D	011501	Lubricator Backup Signa	N/A
31					53				
32	D	1117-A	Blocked Start Air Distr	OFF	54				
33					55				
34	D	2001-A	Shut Down	OFF	61	D	2005-A	Reset Shut Down	OFF
35	A ▲	8601-A	Scavenge Air Pressure (1.57 -	70	A	2184	Governor Index	70.8 %
36					71	A	8501	Start Air Pressure	24.1 -
37					80	D	1114	Slow Turn Valve	OFF
40	D	4001-A	marker master	False	81	D	1217-4	Driven pump 4 AH/AS	OFF
41	D	4002-A	marker slave	True	82	D	1121-A	Main Start Air Valve	OFF
42	D	4003-A	quadrature master	False	83	D	2206-A	Slow Down Local Indicat	OFF
43	D	4004-A	quadrature slave	True	84	D	2154-A	Local Take Command	OFF
					85	D	2159-A	Increase Limit Indicati	OFF

Alarms...

Engine...

Auxiliaries...

Maintenance ▶

System View
I/O Test

Invalidated
Inputs

Network
Status

Admin...

Access

Chief

Maintenance: System View, I/O Test ECU-A, Channel-32



0 2 15 0

Maintenance ▶ System View - I/O Test 2006-09-18 13:19:08

ECU-A

Channel-32

Ch. No	Status	Signal ID	Description
32	D	1117-A	Blocked Start Air Distr

✕

Logic Level: OFF

Process Value: OFF

Channel Setup

Binary Input	Supervised Contact	9 - 31 V : ON	1.8 - 7.5 V : OFF	< 1.6 V : Failure
--------------	--------------------	---------------	-------------------	-------------------

Alarms...

Engine...

Auxiliaries...

Maintenance ▶

System View I/O Test

Invalidated Inputs

Network Status

Admin...

Access

Chief

Maintenance: System View, I/O Test ECU-A, Channel-35, Invalidated



Maintenance ▶ System View - I/O Test 2006-09-18 13:19:55

ECU-A

Channel-35

Ch. No	Status	Signal ID	Description
35	A	8601-A	Scavenge Air Pressure (

Electrical Value: 0.0 mA, Signal Failure

Process Value: 1.57 -, Invalidated

Channel Setup

Analog Input	4 - 20 mA
--------------	-----------

Channel State

Valid Invalid

WARNING!
Changing the STATUS of a channel may cause the system to malfunction.

Alarms... 0 2 15 1

Engine...

Auxiliaries...

Maintenance ▶

System View I/O Test

Invalidated Inputs

Network Status

Admin...

Access

Chief

Maintenance Network Status



0 2 15 2

Maintenance ▶ Network Status 2006-09-18 13:20:57

Observer →	MOP		EICU		ECU		ACU				CCU												
Observed ↓	A	B	A	B	A	B	1	2	3	N/A	1	2	3	4	5	6	7	8	9	10	11	12	
MOP	A	█	█	█	█	█	█	█	█	█	█	█	█	█	█	█	█	█	█	█	█	█	█
	B	█	█	█	█	█	█	█	█	█	█	█	█	█	█	█	█	█	█	█	█	█	█
EICU	A	█	█	█	█	█	█	█	█	█	█	█	█	█	█	█	█	█	█	█	█	█	█
	B	█	█	█	█	█	█	█	█	█	█	█	█	█	█	█	█	█	█	█	█	█	█
ECU	A	█	█	█	█	█	█	█	█	█	█	█	█	█	█	█	█	█	█	█	█	█	█
	B	█	█	█	█	█	█	█	█	█	█	█	█	█	█	█	█	█	█	█	█	█	█
ACU	1	█	█	█	█	█	█	█	█	█	█	█	█	█	█	█	█	█	█	█	█	█	█
	2	█	█	█	█	█	█	█	█	█	█	█	█	█	█	█	█	█	█	█	█	█	█
	3	█	█	█	█	█	█	█	█	█	█	█	█	█	█	█	█	█	█	█	█	█	█
	N/A	█	█	█	█	█	█	█	█	█	█	█	█	█	█	█	█	█	█	█	█	█	█
CCU	1	█	█	█	█	█	█	█	█	█	█	█	█	█	█	█	█	█	█	█	█	█	█
	2	!	!	!	!	!	!	!	!	!	!	!	!	!	!	!	!	!	!	!	!	!	!
	3	!	!	!	!	!	!	!	!	!	!	!	!	!	!	!	!	!	!	!	!	!	!
	4	!	!	!	!	!	!	!	!	!	!	!	!	!	!	!	!	!	!	!	!	!	!
	5	!	!	!	!	!	!	!	!	!	!	!	!	!	!	!	!	!	!	!	!	!	!
	6	!	!	!	!	!	!	!	!	!	!	!	!	!	!	!	!	!	!	!	!	!	!
	7	!	!	!	!	!	!	!	!	!	!	!	!	!	!	!	!	!	!	!	!	!	!
	8	!	!	!	!	!	!	!	!	!	!	!	!	!	!	!	!	!	!	!	!	!	!
	9	!	!	!	!	!	!	!	!	!	!	!	!	!	!	!	!	!	!	!	!	!	!
	10	!	!	!	!	!	!	!	!	!	!	!	!	!	!	!	!	!	!	!	!	!	!
	11	!	!	!	!	!	!	!	!	!	!	!	!	!	!	!	!	!	!	!	!	!	!
	12	!	!	!	!	!	!	!	!	!	!	!	!	!	!	!	!	!	!	!	!	!	!

Cabling Map	MOP		EICU		ECU		ACU				CCU												
	A	B	A	B	A	B	1	2	3	N/A	1	2	3	4	5	6	7	8	9	10	11	12	
Net A	█	A	█	█	█	█	█	█	█	█	█	█	█	█	█	█	█	█	█	█	█	█	
Net B	█	B	█	█	█	█	█	█	█	█	█	█	█	█	█	█	█	█	█	█	█	█	█

✓ OK
 ▭ This MOP
 ! No Reply Single Channel
 █ Not Accessible
 ▨ Not Relevant
 A Reference
 B Cross Connection
 ! No Communication
 █ Online but No Information

- Alarms...
- Engine...
- Auxiliaries...
- Maintenance ▶
- System View I/O Test
- Invalidated Inputs
- Network Status
- Admin...
- Access
- Chief

Maintenance: Network Status – ECU A Net A Failure



EICUA_SNO-ECUA 13:21:40 Net A not connected to ECUA Alarm - - 2 4 15 2

Maintenance ▶ Network Status 2006-09-18 13:21:48

Observer →	MOP		EICU		ECU		ACU				CCU													
Observed ↓	A	B	A	B	A	B	1	2	3	N/A	1	2	3	4	5	6	7	8	9	10	11	12		
MOP	A	█	✓	✓	✓	✓	✓	✓	✓	✓	✓	✓	✓	✓	✓	✓	✓	✓	✓	✓	✓	✓	✓	
	B	✓	█	✓	✓	✓	✓	✓	✓	✓	✓	✓	✓	✓	✓	✓	✓	✓	✓	✓	✓	✓	✓	
EICU	A	✓	✓	█	✓	✓	✓	✓	✓	✓	✓	✓	✓	✓	✓	✓	✓	✓	✓	✓	✓	✓	✓	
	B	✓	✓	✓	█	✓	✓	✓	✓	✓	✓	✓	✓	✓	✓	✓	✓	✓	✓	✓	✓	✓	✓	
ECU	A	! ✓	! ✓	! ✓	! ✓	! ✓	! ✓	! ✓	! ✓	! ✓	! ✓	! ✓	! ✓	! ✓	! ✓	! ✓	! ✓	! ✓	! ✓	! ✓	! ✓	! ✓	! ✓	
	B	✓	✓	✓	✓	✓	✓	✓	✓	✓	✓	✓	✓	✓	✓	✓	✓	✓	✓	✓	✓	✓	✓	
ACU	1	✓	✓	✓	✓	✓	✓	✓	✓	✓	✓	✓	✓	✓	✓	✓	✓	✓	✓	✓	✓	✓	✓	
	2	! !	! !	! !	! !	! !	! !	! !	! !	! !	! !	! !	! !	! !	! !	! !	! !	! !	! !	! !	! !	! !	! !	
	3	! !	! !	! !	! !	! !	! !	! !	! !	! !	! !	! !	! !	! !	! !	! !	! !	! !	! !	! !	! !	! !	! !	
	N/A																							
CCU	1	✓	✓	✓	✓	✓	✓	✓	✓	✓	! !	! !	! !	! !	! !	! !	! !	! !	! !	! !	! !	! !	! !	
	2	! !	! !	! !	! !	! !	! !	! !	! !	! !	! !	! !	! !	! !	! !	! !	! !	! !	! !	! !	! !	! !	! !	
	3	! !	! !	! !	! !	! !	! !	! !	! !	! !	! !	! !	! !	! !	! !	! !	! !	! !	! !	! !	! !	! !	! !	
	4	! !	! !	! !	! !	! !	! !	! !	! !	! !	! !	! !	! !	! !	! !	! !	! !	! !	! !	! !	! !	! !	! !	
	5	! !	! !	! !	! !	! !	! !	! !	! !	! !	! !	! !	! !	! !	! !	! !	! !	! !	! !	! !	! !	! !	! !	
	6	! !	! !	! !	! !	! !	! !	! !	! !	! !	! !	! !	! !	! !	! !	! !	! !	! !	! !	! !	! !	! !	! !	! !
	7	! !	! !	! !	! !	! !	! !	! !	! !	! !	! !	! !	! !	! !	! !	! !	! !	! !	! !	! !	! !	! !	! !	! !
	8	! !	! !	! !	! !	! !	! !	! !	! !	! !	! !	! !	! !	! !	! !	! !	! !	! !	! !	! !	! !	! !	! !	! !
	9	! !	! !	! !	! !	! !	! !	! !	! !	! !	! !	! !	! !	! !	! !	! !	! !	! !	! !	! !	! !	! !	! !	! !
	10	! !	! !	! !	! !	! !	! !	! !	! !	! !	! !	! !	! !	! !	! !	! !	! !	! !	! !	! !	! !	! !	! !	! !
	11	! !	! !	! !	! !	! !	! !	! !	! !	! !	! !	! !	! !	! !	! !	! !	! !	! !	! !	! !	! !	! !	! !	! !
	12	! !	! !	! !	! !	! !	! !	! !	! !	! !	! !	! !	! !	! !	! !	! !	! !	! !	! !	! !	! !	! !	! !	! !

Cabling Map	MOP		EICU		ECU		ACU				CCU												
	A	B	A	B	A	B	1	2	3	N/A	1	2	3	4	5	6	7	8	9	10	11	12	
Net A	✓	A	✓	✓	! ✓	✓	✓	✓	✓		✓	█	█	█	█	█	█	█	█	█	█	█	█
Net B	✓	B	✓	✓	✓	✓	✓	✓	✓		✓	█	█	█	█	█	█	█	█	█	█	█	█

OK
 This MOP
 No Reply Single Channel
 Not Accessible
 Not Relevant
 Online but No Information
 Reference
 Cross Connection

- Alarms...
- Engine...
- Auxiliaries...
- Maintenance ▶
- System View
I/O Test
- Invalidated
Inputs
- Network
Status
- Admin...
- Access

Maintenance: Network Status – ECU A Net A + B Failure



EICUA_SNO-ECUA | 13:21:40 | Net A not connected to ECUA | Alarm | - | - | ! | 14 | 15 | 15 | 1

Maintenance ▶ Network Status 2006-09-18 13:22:16

Observer →	MOP		EICU		ECU		ACU				CCU												
Observed ↓	A	B	A	B	A	B	1	2	3	N/A	1	2	3	4	5	6	7	8	9	10	11	12	
MOP	A	█	█	█	█	█	█	█	█	█	█	█	█	█	█	█	█	█	█	█	█	█	█
EICU	A	█	█	█	█	█	█	█	█	█	█	█	█	█	█	█	█	█	█	█	█	█	█
ECU	A	!	!	!	!	!	!	!	!	!	!	!	!	!	!	!	!	!	!	!	!	!	!
ACU	1	█	█	█	█	█	█	█	█	█	█	█	█	█	█	█	█	█	█	█	█	█	
CCU	1	█	█	█	█	█	█	█	█	█	█	█	█	█	█	█	█	█	█	█	█	█	
	2	!	!	!	!	!	!	!	!	!	!	!	!	!	!	!	!	!	!	!	!	!	
	3	!	!	!	!	!	!	!	!	!	!	!	!	!	!	!	!	!	!	!	!	!	
	4	!	!	!	!	!	!	!	!	!	!	!	!	!	!	!	!	!	!	!	!	!	
	5	!	!	!	!	!	!	!	!	!	!	!	!	!	!	!	!	!	!	!	!	!	
	6	!	!	!	!	!	!	!	!	!	!	!	!	!	!	!	!	!	!	!	!	!	
	7	!	!	!	!	!	!	!	!	!	!	!	!	!	!	!	!	!	!	!	!	!	
	8	!	!	!	!	!	!	!	!	!	!	!	!	!	!	!	!	!	!	!	!	!	
	9	!	!	!	!	!	!	!	!	!	!	!	!	!	!	!	!	!	!	!	!	!	
	10	!	!	!	!	!	!	!	!	!	!	!	!	!	!	!	!	!	!	!	!	!	
	11	!	!	!	!	!	!	!	!	!	!	!	!	!	!	!	!	!	!	!	!	!	
	12	!	!	!	!	!	!	!	!	!	!	!	!	!	!	!	!	!	!	!	!	!	

Cabling Map	MOP		EICU		ECU		ACU				CCU											
	A	B	A	B	A	B	1	2	3	N/A	1	2	3	4	5	6	7	8	9	10	11	12
Net A	█	█	█	█	█	█	█	█	█	█	█	█	█	█	█	█	█	█	█	█	█	█
Net B	█	█	█	█	█	█	█	█	█	█	█	█	█	█	█	█	█	█	█	█	█	█

✓ OK | ⬇ This MOP | ! No Reply Single Channel | █ Not Accessible | █ Not Relevant | A Reference | B Cross Connection
! No Communication | █ Online but No Information

- Alarms...
- Engine...
- Auxiliaries...
- Maintenance ▶
- System View I/O Test
- Invalidated Inputs
- Network Status
- Admin...
- Access
- Chief

Admin.: Set Time



0 0 15 0

Admin ▶ Set Time 2006-09-18 13:09:25

Alarms...
Engine...
Auxiliaries...
Maintenance...
Admin ▶
Set Time
Version

UTC Date/Time 2006-09-18 11:09:25 UTC Time Displayed

Local Date/Time 2006-09-18 13:09:25 Local Time Displayed

Local Date/Time 2006-09-18 13:09:21 Hours Minutes
New Date/Time 2006-09-18 13:09:21 Offset 02:00 -1 +1 -15 -5 +5 +15 Set

Access
Chief

Alarms: Alarm List



ECUA_8601-A04	13:10:44	Suprv. Ch35,8601-A,Scavenge Air Pre	Alarm	-	-	!	2	2	15	0
---------------	----------	-------------------------------------	-------	---	---	---	---	---	----	---

Alarms ▶ Alarm List 2006-09-18 13:15:12

ID	Time	Description	Status	Limit	Current	Ack
ECUB_8601-B04	13:10:44	Suprv. Ch35,8601-B,Scavenge Air Pre	Normal	-	-	!
ECUA_8601-A04	13:10:44	Suprv. Ch35,8601-A,Scavenge Air Pre	Alarm	-	-	!
CCU1_0227	13:10:24	HCU Oil Leakage	Alarm	-	-	

Info

Description: Leakage has been detected at the specified HCU.

Cause: A leakage is detected in the high pressure fuel pipe.

Effect: High pressure fuel is in the outer pipe. A leakage in the outer pipe will result in fuel spray onto engine components and maybe even on personnel. The control system provides an option (set by MAN B&V) for stopping fuel injections on the specific cylinder during this situation.

Suggested Action: If automatic fuel cut out is not performed by ECS, manually cut of fuel to that specific cylinder

Alarms ▶

Alarm List

Event Log

Manual Cut-Out List

Channel List

Engine...

Auxiliaries...

Maintenance...

Admin...

Access

Chief

Alarms: Event Log



ECUA_8601-A04		13:10:44	Suprv. Ch35,8601-A,Scavenge Air Pre		Alarm	-	-				15	0
Alarms ▶ Event Log										2006-09-18 13:12:25		Alarms ▶
ID: Unit_Tag	Date	Time	Description	Status	MCo	ACo	Ack					
<i>MOPB_CLKSYNC</i>	<i>2006-09-18</i>	<i>12:14:06,34</i>	<i>Time bumped 3464 seconds</i>	<i>Normal</i>								
MOPB_CLKSYNC	2006-09-18	12:14:04,34	Time bumped 3464 seconds	Normal								
MOPB_CLKSYNC	2006-09-18	12:14:02,34	Time bumped 3464 seconds	Normal								
MOPB_CLKSYNC	2006-09-18	12:13:46,37	Time bumped 3464 seconds	Normal								
MOPB_CLKSYNC	2006-09-18	12:13:32,32	Time bumped 3464 seconds	Normal								
MOPB_CLKSYNC	2006-09-18	12:13:18,31	Time bumped 3464 seconds	Normal								
CCU1_0227	2006-09-18	13:10:55,46	HCU Oil Leakage	Alarm			×					
ECUB_8601-B04	2006-09-18	13:10:47,39	Suprv. Ch35,8601-B,Scavenge Air Pre	Normal								
ECUB_8601-B04	2006-09-18	13:10:44,53	Suprv. Ch35,8601-B,Scavenge Air Pre	Alarm								
ECUA_8601-A04	2006-09-18	13:10:44,47	Suprv. Ch35,8601-A,Scavenge Air Pre	Alarm								
CCU1_0227	2006-09-18	13:10:24,64	HCU Oil Leakage	Alarm								
MOPB_CLKSYNC	2006-09-18	11:09:12,11	TZ offset changed 7200 seconds	Normal								
MOPB_CLKSYNC	2006-09-18	11:09:11,59	TZ offset changed 7200 seconds by local operator	Normal								
MOPB_CLKSYNC	2006-09-18	09:55:57,72	Time bumped 3464 seconds	Normal								
MOPB_CLKSYNC	2006-09-18	09:55:55,73	Time bumped 3464 seconds	Normal								
MOPB_CLKSYNC	2006-09-18	09:55:41,71	Time bumped 3464 seconds	Normal								
MOPB_CLKSYNC	2006-09-18	09:55:25,70	Time bumped 3464 seconds	Normal								
ECUA_01020428	2006-09-18	10:52:57,23	Tacho set B failure	Normal			×					
ECUB_01020428	2006-09-18	10:52:57,20	Tacho set B failure	Normal			×					
CCU1_01010428	2006-09-18	10:52:57,20	Tacho set B failure	Normal			×					
<div style="display: flex; justify-content: space-between; align-items: center;"> <div>Unit/Tag Filter</div> <div>Time Span Filter</div> <div>Go to Date/Time</div> <div>Export</div> <div></div> <div></div> <div></div> <div></div> <div></div> <div></div> <div>Info</div> </div>										Access <div style="border: 1px solid black; padding: 2px; display: inline-block;">Chief</div>		

Alarms: Event Log - Filter



ECUA_8601-A04 | 13:10:44 | Suprv. Ch35,8601-A,Scavenge Air Pre | Alarm | - | - | 2 2 15 0

Alarms ▶ Event Log | 2006-09-18 13:12:53

ID: Unit_Tag	Date	Time	Description	Status	MCo	ACo	Ack
MOPB_CLKSYNC	2006-09-18	12:14:06,34	Time bumped 3464 seconds	Normal			

Unit/Tag Filter

Unit: CCU1 | Index: | Tag: 0227 | Fetch Selected | Clear | Apply |

1 2 3 4 5 6 7 8 9 0 - ← BS

Q W E R T Y U I O P _ ←

* A S D F G H J K L ; :

/ Z X C V B N M , . Space

MOPB_CLKSYNC	2006-09-18	09:55:41,71	Time bumped 3464 seconds	Normal			
MOPB_CLKSYNC	2006-09-18	09:55:25,70	Time bumped 3464 seconds	Normal			
ECUA_01020428	2006-09-18	10:52:57,23	Tacho set B failure	Normal			×
ECUB_01020428	2006-09-18	10:52:57,20	Tacho set B failure	Normal			×
CCU1_01010428	2006-09-18	10:52:57,20	Tacho set B failure	Normal			×

Unit/Tag Filter | Time Span Filter | Go to Date/Time | Export | | | | | | | Info

Alarms ▶

Alarm List

Event Log

Manual Cut-Out List

Channel List

Engine...

Auxiliaries...

Maintenance...

Admin...

Access

Chief

Alarms: Manual Cut-Out List



ECUA_8601-A04 13:10:44 Suprv. Ch35,8601-A,Scavenge Air Pre Alarm - - 2 2 15 0

Alarms ▶ Manual Cut-Out List 2006-09-18 13:13:11

ID	Date	Time	Description	Status	Limit	Current
EICUA_0182	2006-09-15	08:55:45	Sensor Fail 'Take Cmd ECR'	Alarm	-	-
EICUA_2143-A04	2006-09-15	08:55:40	Suprv. Ch34,2143-A,Take command ECR	Alarm	-	-
EICUA_SNA-AXU1	2006-09-15	08:58:15	MPC AXU1 unavailable	Alarm	-	-
EICUA_SN1-AXU1	2006-09-15	08:58:15	Net B not connected to AXU1	Alarm	-	-
EICUA_SNO-AXU1	2006-09-15	08:58:15	Net A not connected to AXU1	Alarm	-	-
EICUA_SAR-AXU1	2006-09-15	08:58:15	App. not running on AXU1	Alarm	-	-
EICUA_SEICU	2006-09-15	08:55:35	Global Params. inconsist	Alarm	-	-
EICUB_0182	2006-09-15	08:55:45	Sensor Fail 'Take Cmd ECR'	Alarm	-	-
EICUB_2143-B04	2006-09-15	08:55:40	Suprv. Ch34,2143-B,Take command ECR	Alarm	-	-
EICUB_SNA-AXU1	2006-09-15	08:58:15	MPC AXU1 unavailable	Alarm	-	-
EICUB_SN1-AXU1	2006-09-15	08:58:15	Net B not connected to AXU1	Alarm	-	-
EICUB_SNO-AXU1	2006-09-15	08:58:15	Net A not connected to AXU1	Alarm	-	-
EICUB_SAR-AXU1	2006-09-15	08:58:15	App. not running on AXU1	Alarm	-	-
EICUB_SEICU	2006-09-15	08:55:35	Global Params. inconsist	Alarm	-	-
CCU1_031221	2006-09-15	08:58:35	No Cylinder Lube Oil	Alarm	-	-

Alarms ▶

- Alarm List
- Event Log
- Manual Cut-Out List
- Channel List
- Engine...
- Auxiliaries...
- Maintenance...
- Admin...
- Access
- Chief

Reactivate Line/of 1 15 Info

Alarms: Channel List



ECUA_8601-A04 13:10:44 Suprv. Ch35,8601-A,Scavenge Air Pre Alarm - - 15 0

Alarms ▶ Channel List 2006-09-18 13:14:48

ID	Date	Time	Description	Status	MCo	ACo	Ack
ACU1_010110	2006-09-18	10:46:55	No Commands from ECU A	Normal			×
ACU1_010111	2006-09-18	10:46:55	No Commands from ECU B	Normal			×
ACU1_0210	2006-09-15	08:55:36	Blower 1 Ctrl Failed	Normal			×
ACU1_070119	2006-09-15	08:55:38	Pump ctrl failure	Normal			×
ACU1_07013604	2006-09-15	08:55:37	PV_AMP Amp. Current Supervision	Normal			×
ACU1_07013605	2006-09-15	08:55:37	PV_AMP Amp. Reports Internal Fault	Normal			×
ACU1_070210	2006-09-15	08:55:38	Startup Pump Ctrl Failed	Normal			×
ACU1_0708	2006-09-15	08:55:38	Hydraulic leakage (shutdown level)	Normal			×
ACU1_0724	2006-09-15	08:55:39	Double pipe press. high	Normal			×
ACU1_0725	2006-09-15	08:55:39	Double pipe press. low	Normal			×
ACU1_1109-A04	2006-09-15	08:55:33	Suprv. Ch23,1109-A,Turning gear dis	Normal			×
ACU1_1110-A04	2006-09-15	08:55:33	Suprv. Ch22,1110-A,Turning gear eng	Normal			×
ACU1_1111-A04	2006-09-15	08:55:33	Suprv. Ch21,1111-A,Main start valve	Normal			×
ACU1_1112-A04	2006-09-15	08:55:33	Suprv. Ch24,1112-A,Main start valve	Normal			×
ACU1_1116-A04	2006-09-15	08:55:33	Suprv. Ch25,1116-A,Start air dist I	Normal			×
ACU1_1201-104	2006-09-18	10:46:49	Suprv. Ch31,1201-1,Hydraulic Pressu	Normal			×
ACU1_1202-A03	2006-09-15	08:55:35	Suprv. Ch80,1202-A,System bypass op	Normal			×
ACU1_1204-104	2006-09-15	08:55:34	Suprv. Ch32,1204-1,Lube oil pressur	Normal			×
ACU1_123604	2006-09-15	08:55:33	Suprv. Ch27,1236,Hyd. leak shutdown	Normal			×
ACU1_1238-104	2006-09-15	08:55:35	Suprv. Ch30,1238-1,Prop. Valve Feed	Normal			×
ACU1_8501-A04	2006-09-15	08:55:34	Suprv. Ch37,8501-A,Starting air pre	Normal			×

Out-Out Reactivate Line/of 0 / 564 Info

Alarms ▶
Alarm List
Event Log
Manual Cut-Out List
Channel List
Engine...
Auxiliaries...
Maintenance...
Admin...
Access
Chief