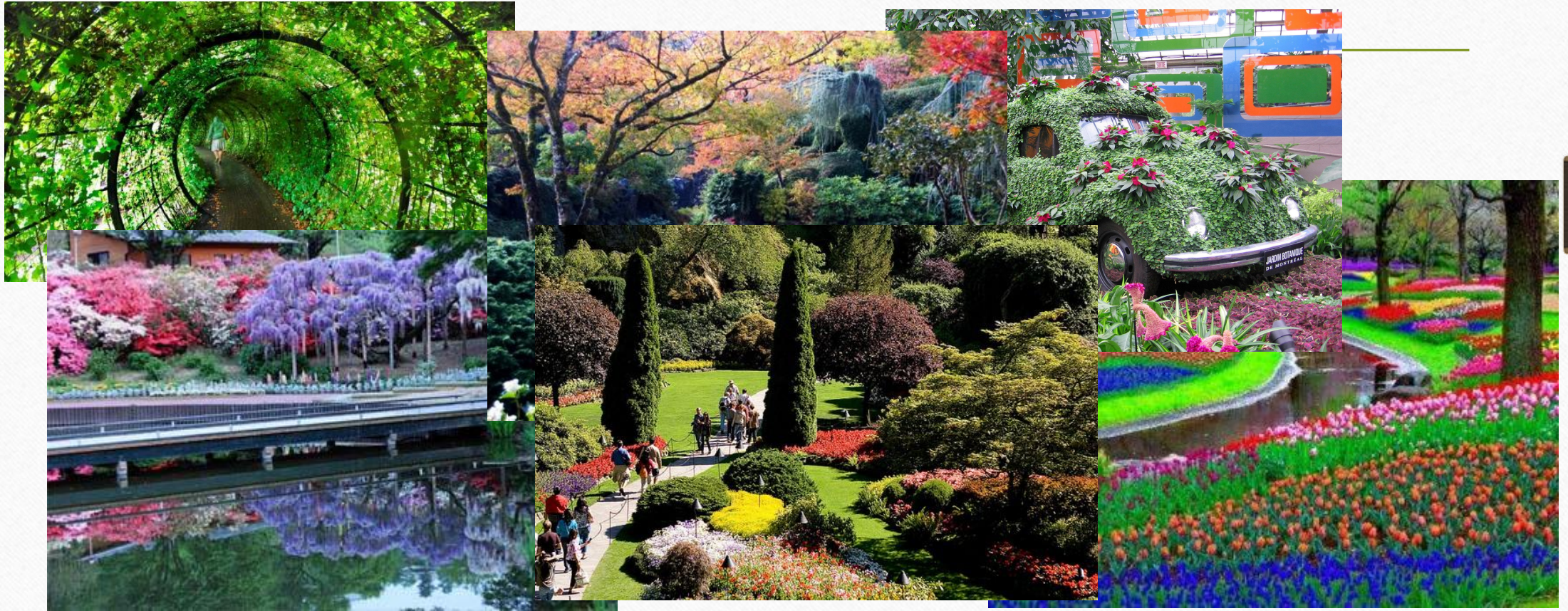


Nature of Canada

Botanical gardens of Canada



A
C
o
w
a
p



S

R
l
C
is
T
E



1

Canada's Forests



Eastern Canadian forests

Eastern Canadian forests - ecological regions in Canada, released by the classification system of the World Wildlife Fund

This ecoregion is composed of many mountain areas on the east coast of Canada and along the St. Lawrence River in eastern Quebec. The climate is cool and humid on the coast fog is common, especially in the Strait of Belle-Isle between Labrador and Newfoundland. The region is dominated by black spruce.

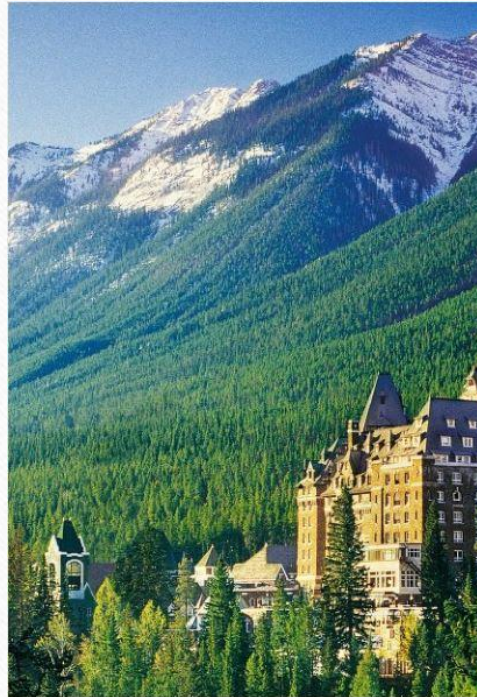
Alberta Mountain forests

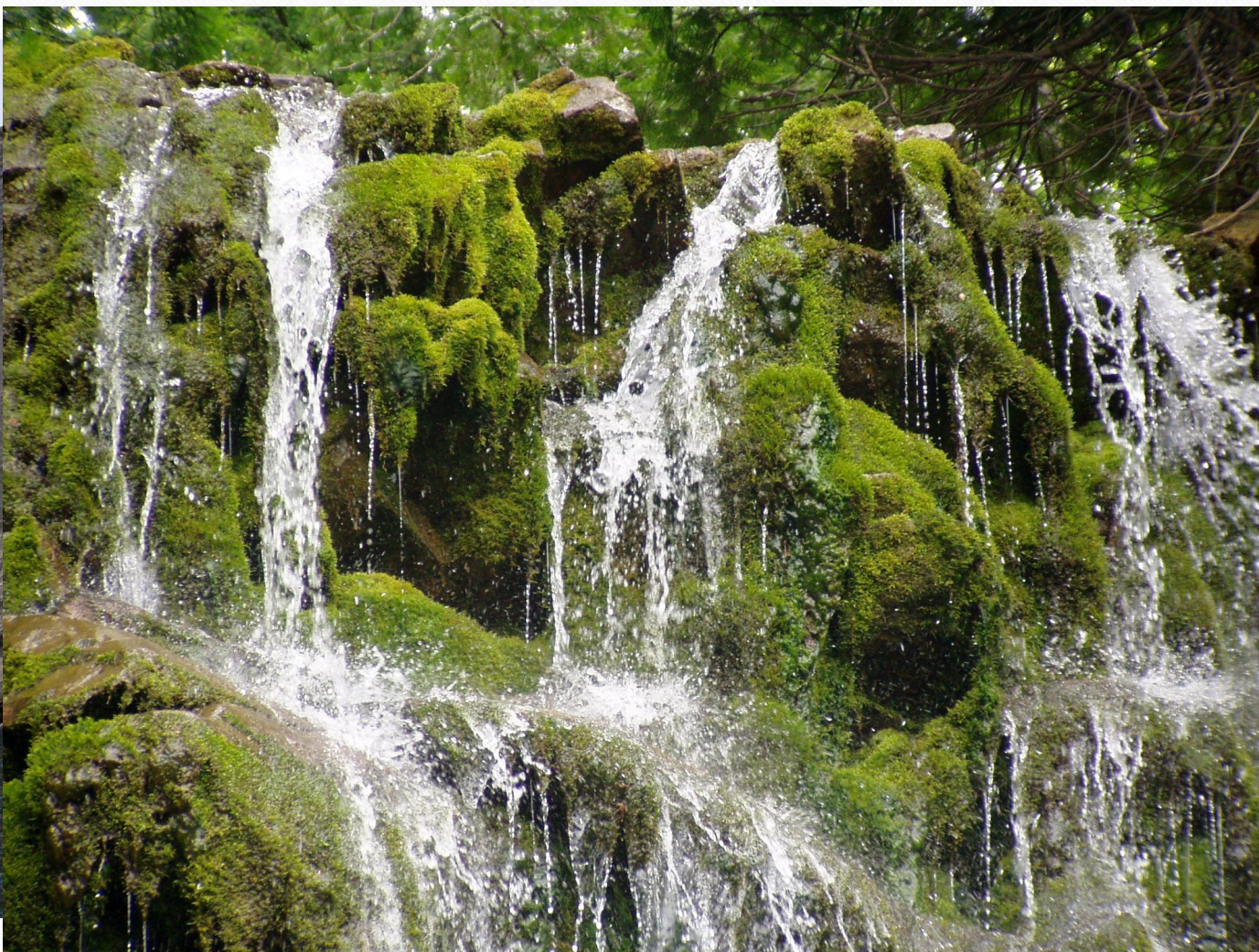
Alberta Mountain forests - ecological region temperate coniferous forests in Canada.

This ecoregion opens backbone of the Rocky Mountains of Alberta. Almost all are located in Alberta and Alberta British-Colombian border north from Banff to Jasper (Alberta) and the wildlife park Kakva River. This is an area of glaciers and high mountains, covered with forests of tall trees. The highest mountain peaks are about Columbia ice field - the largest ice field in the Rocky Mountains.

Mountain valleys are characterized by a mild climate with warm, dry summers and snowy winters, but on the slopes of high mountains the climate is more severe. Average temperatures in the summer - $+12^{\circ}\text{C}$, in winter - -7°C .

Parks of Canada





N
S
T
to
co
T
pe
m
ch



2