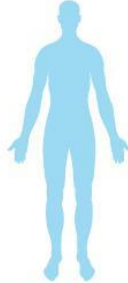
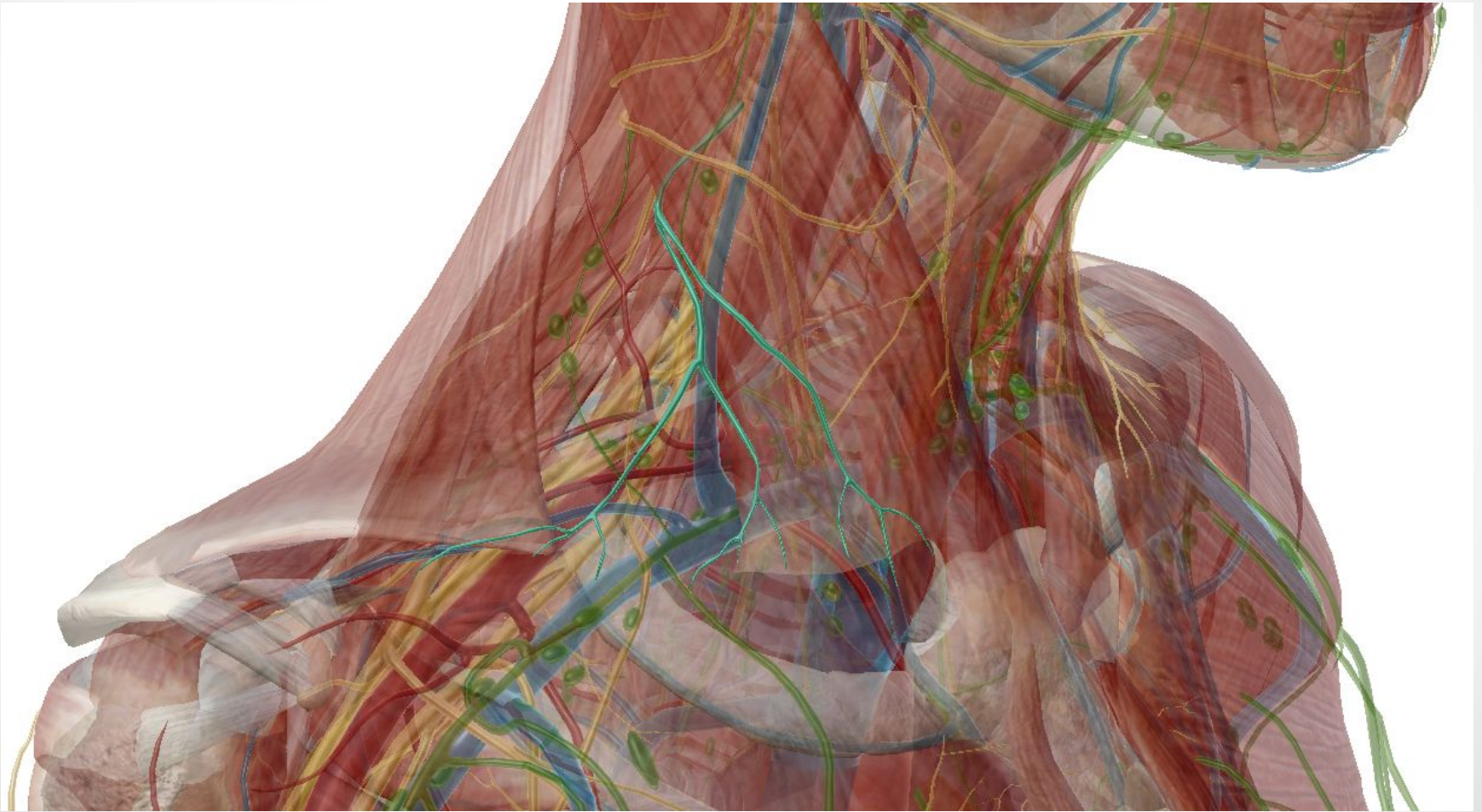


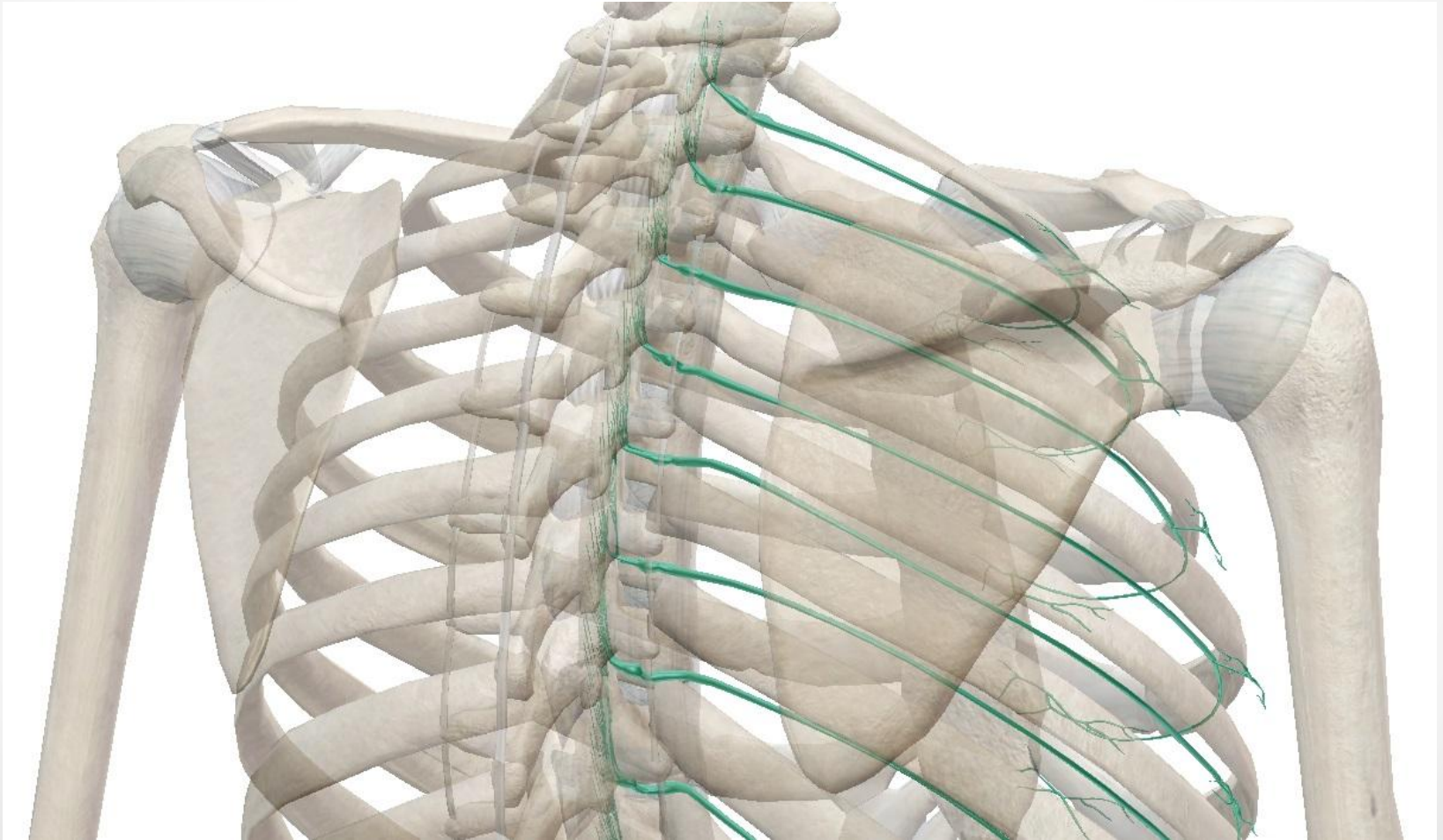
Нервы и Сосуды Верхней Конечности

VISIBLE  BODY™

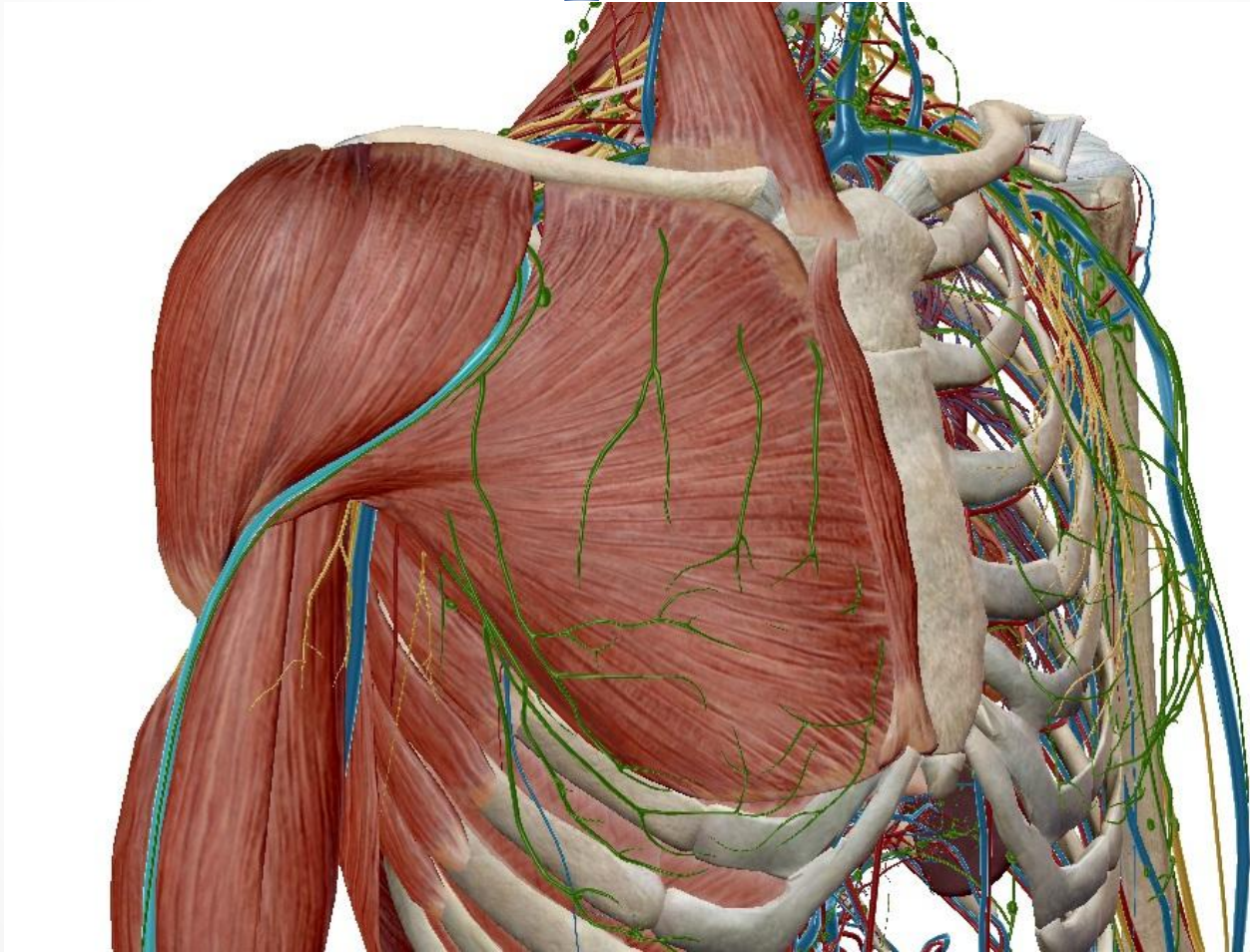
nn. Supraclaviculares



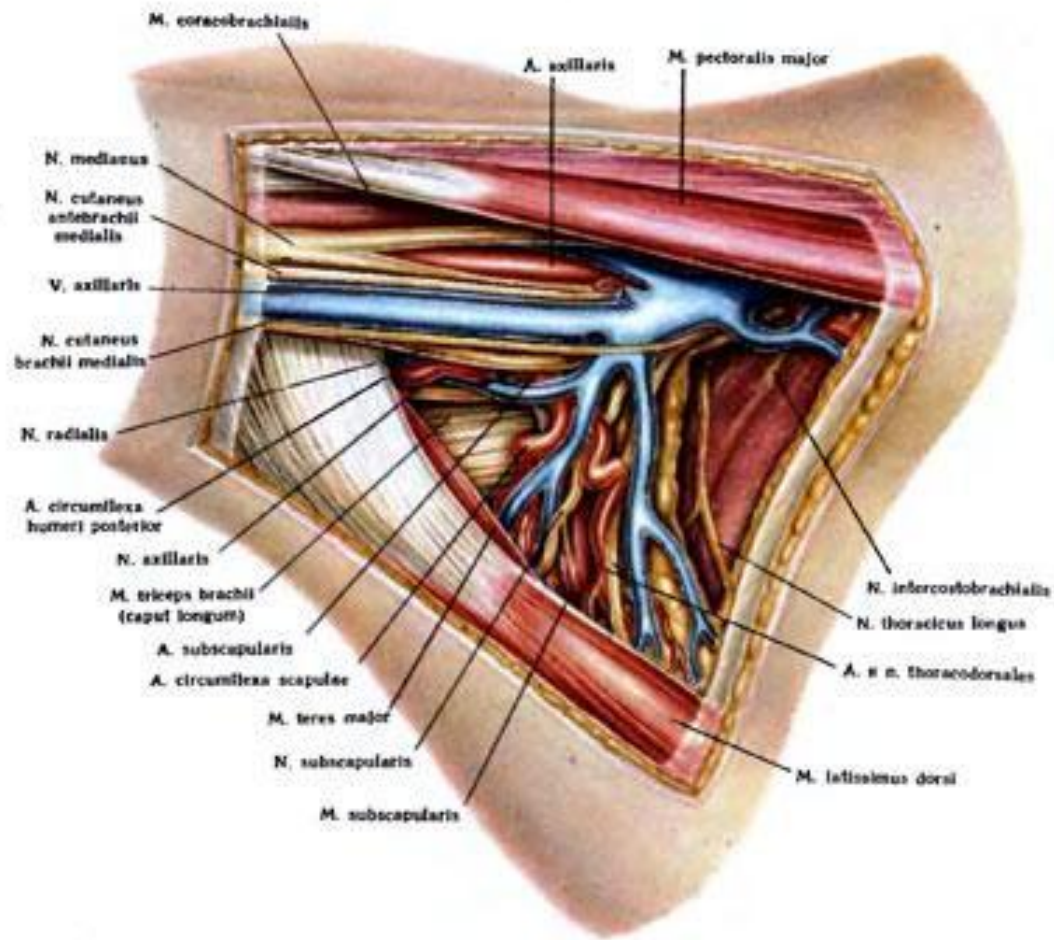
nn. Intercostales



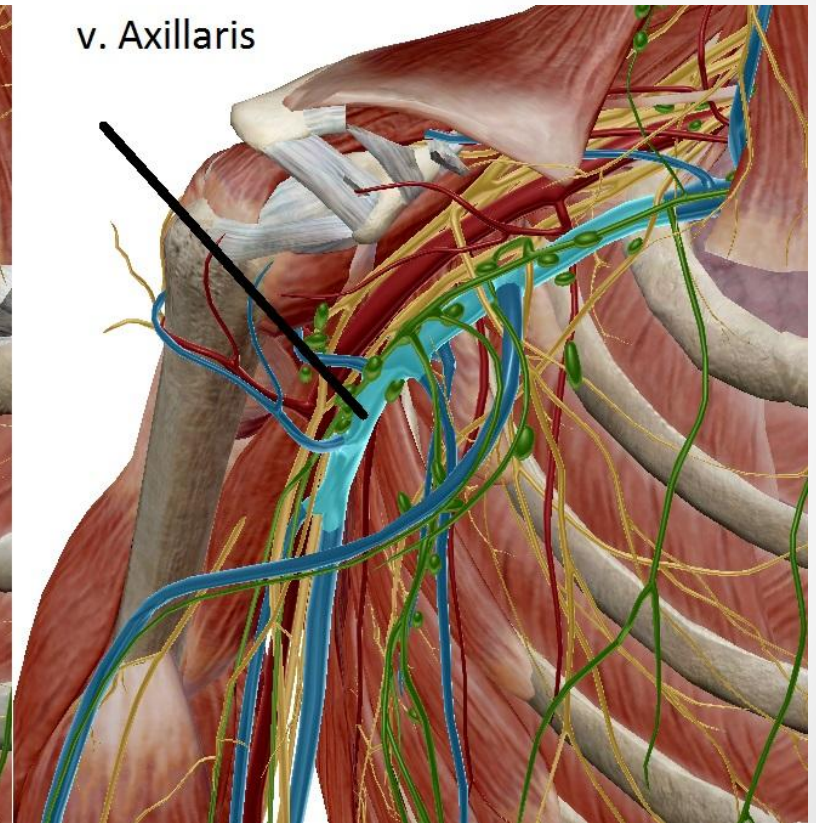
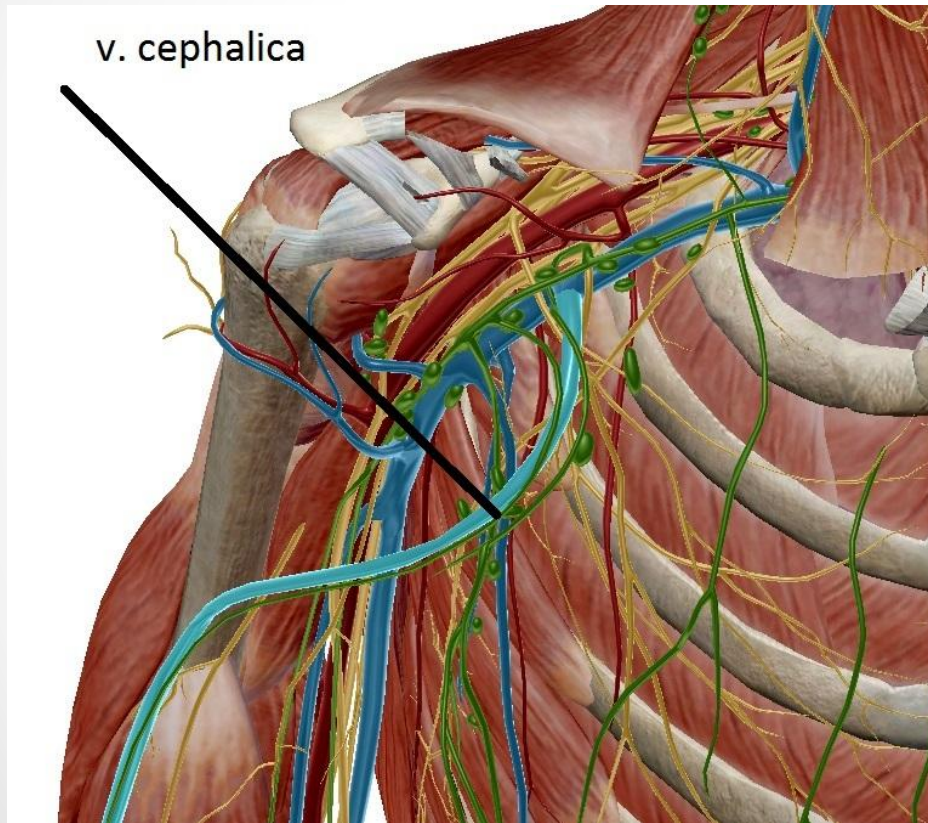
v. Cephalica



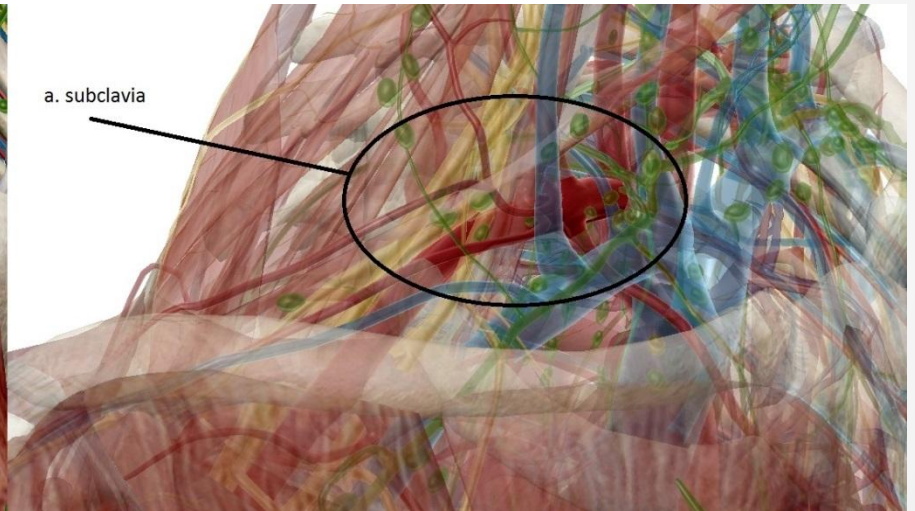
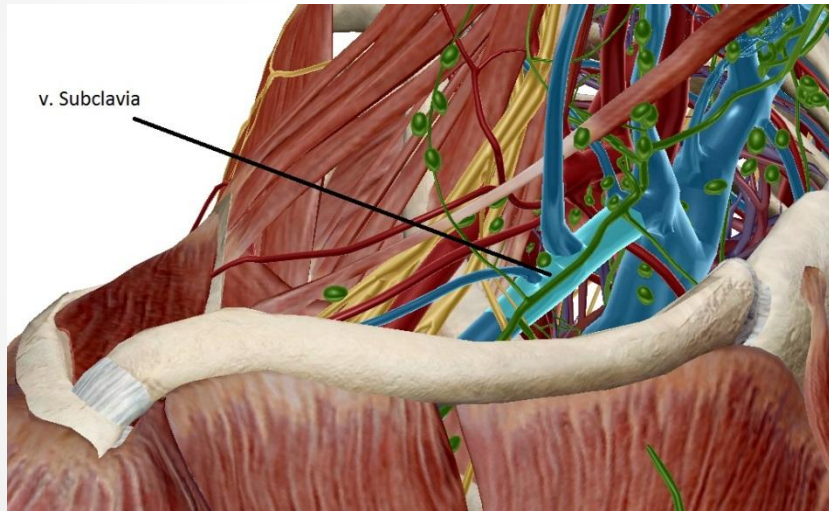
Trigonum Claviopectorale



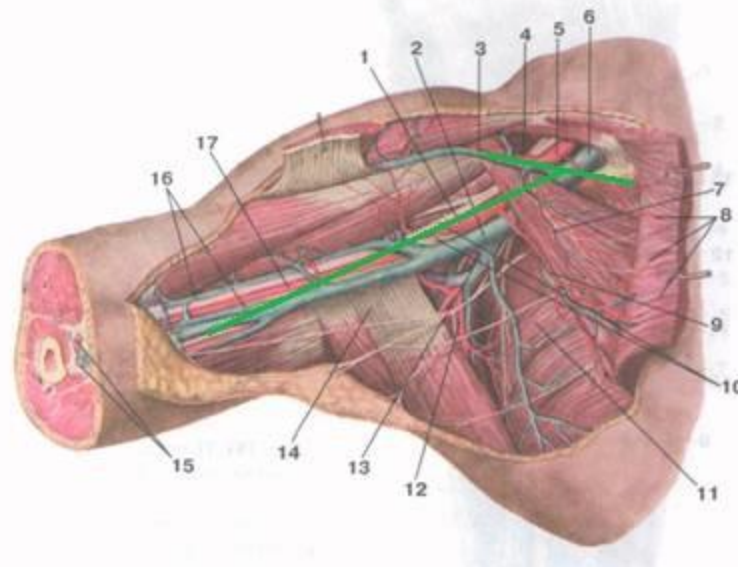
v. Cephalica впадает в v. Axillaris

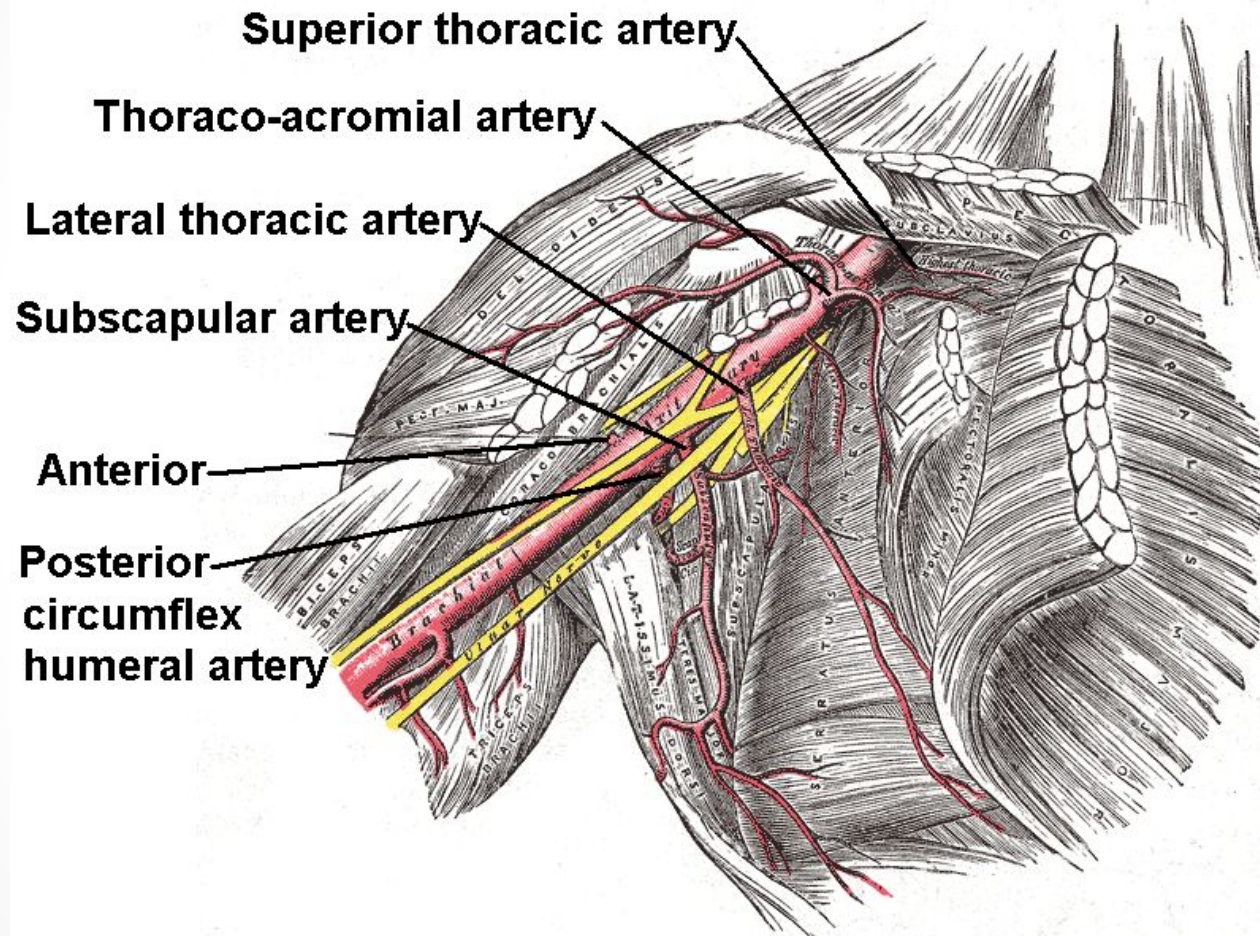


a. et v. Subclavia



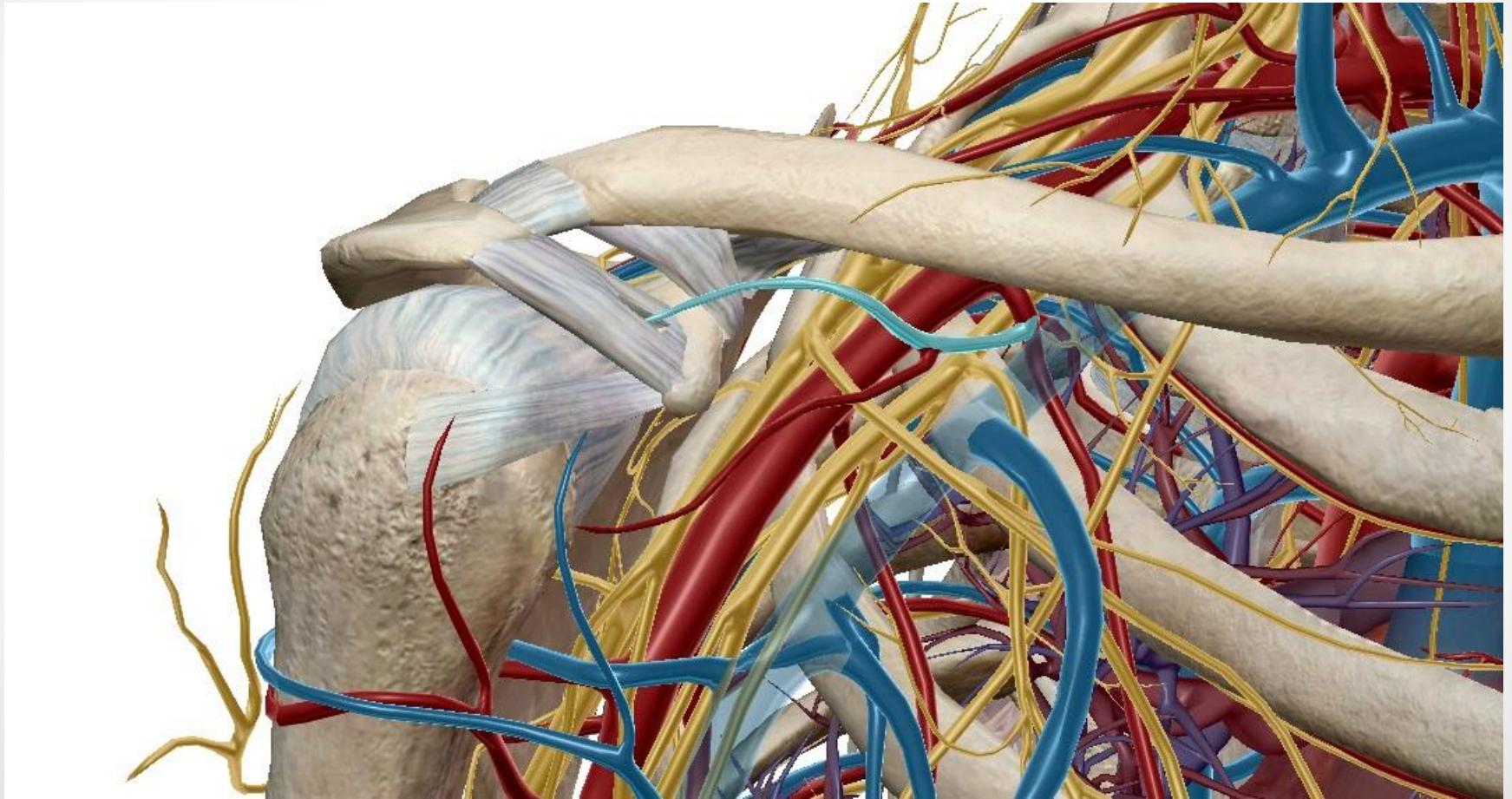
Проекция подмышечной артерии и вены



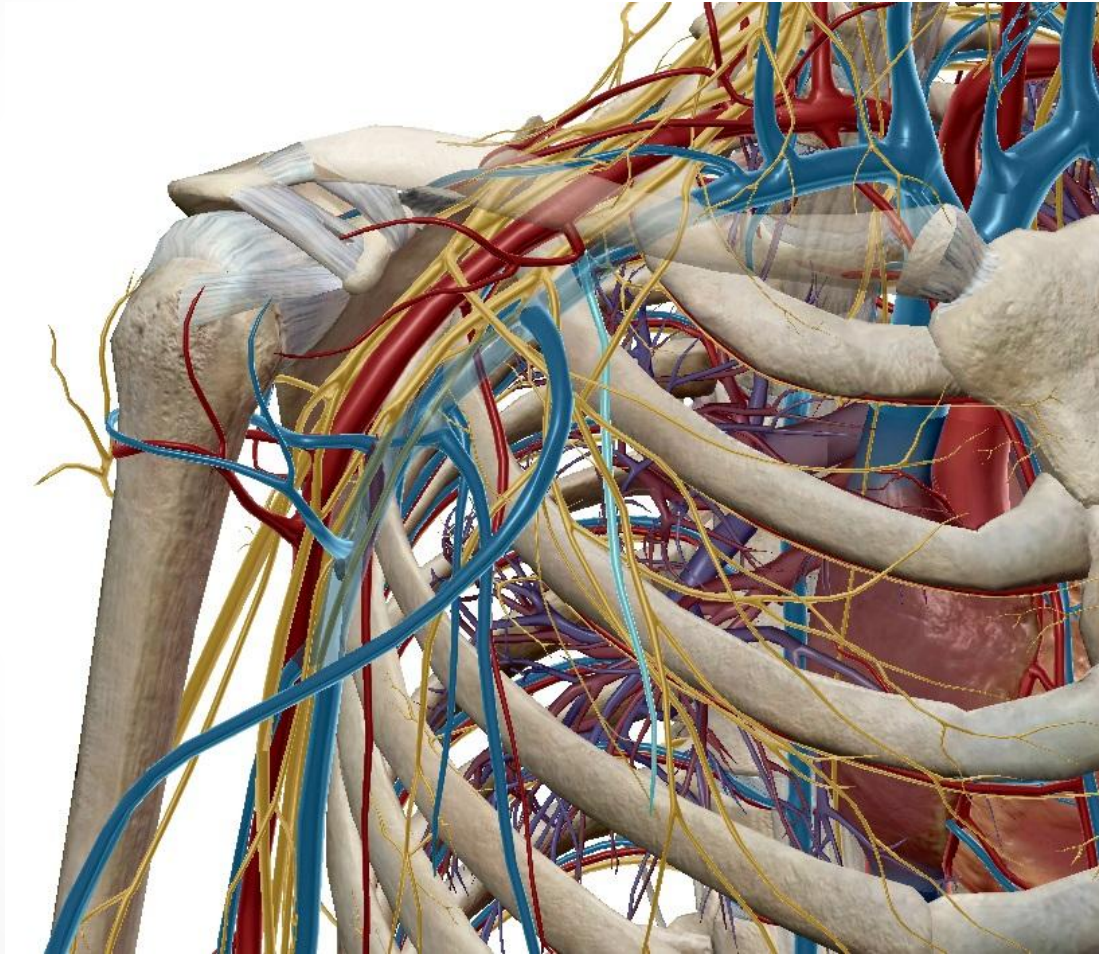


a. Thoracoacromialis

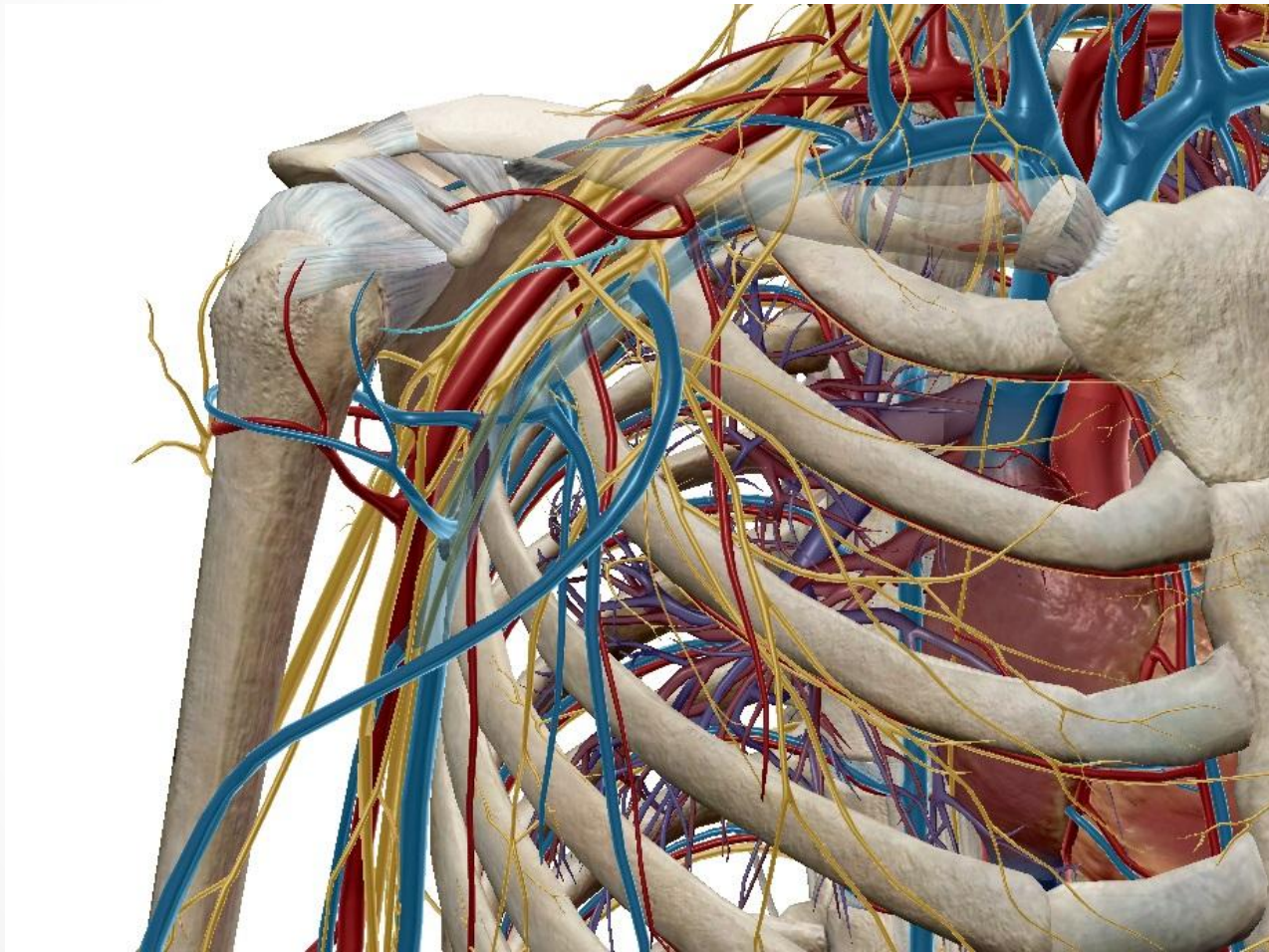
r. Acromialis



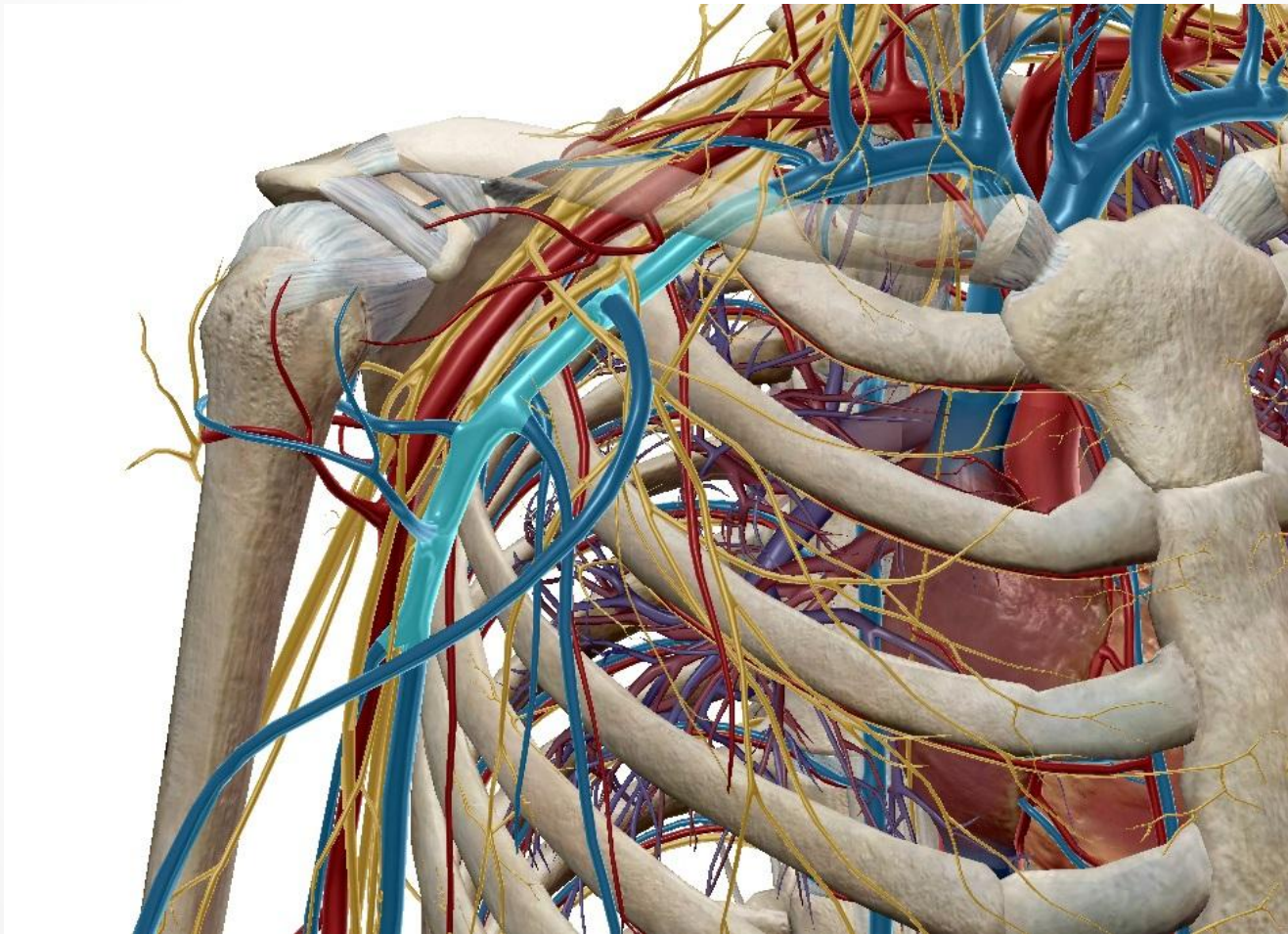
a. Thoracoacromialis r. Pectoralis



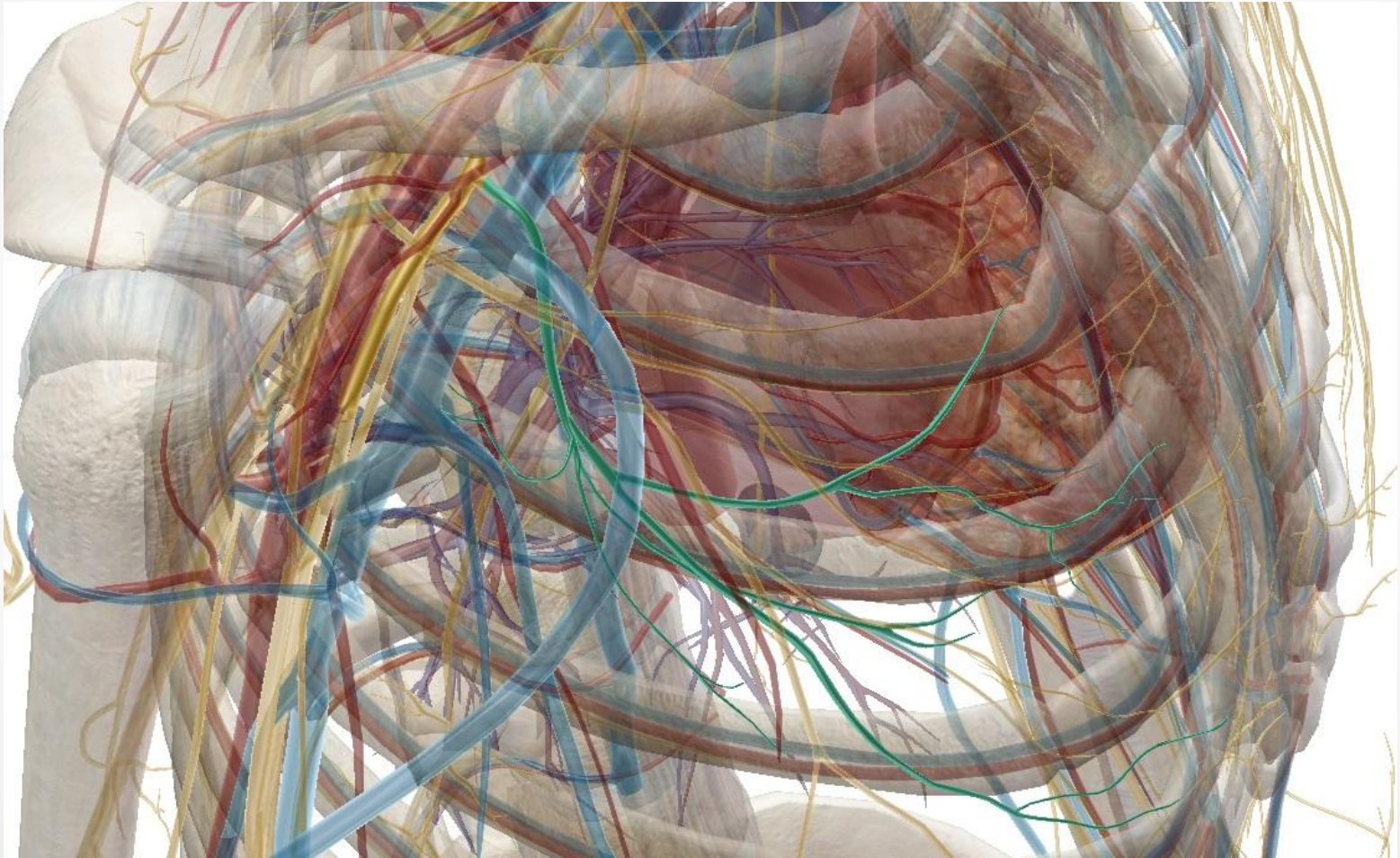
a. Thoracoacromialis r. Deltoideus



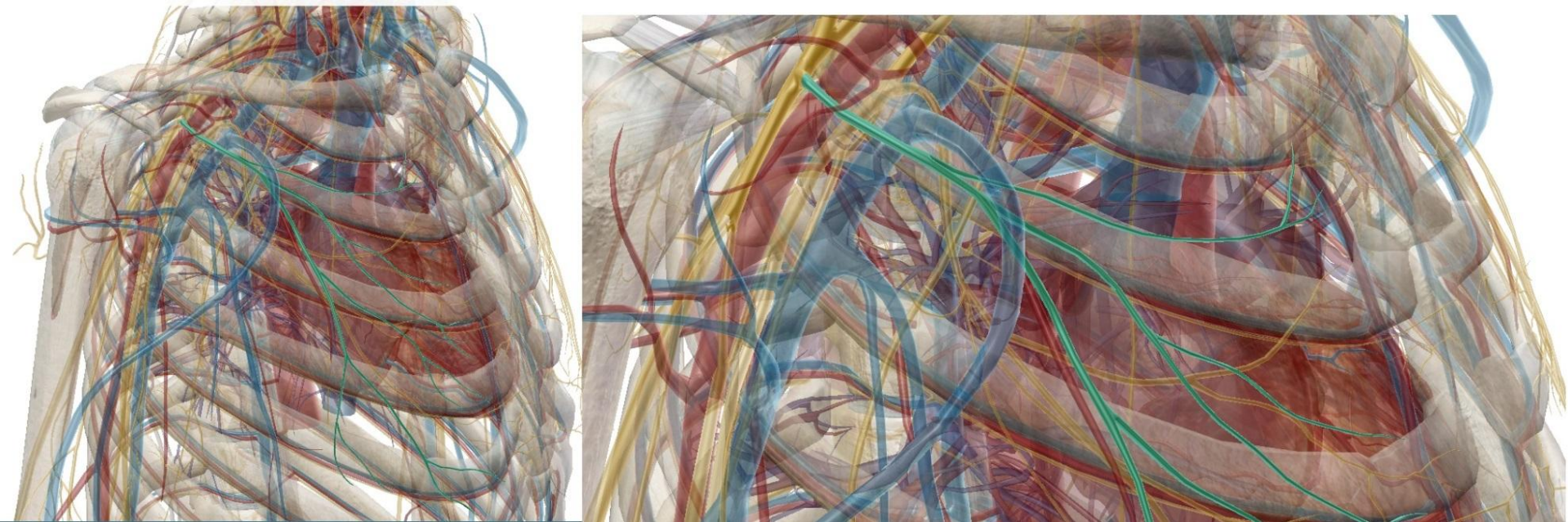
v. Axillaris



nn. Pectoralis medialis



nn. Pectoralis lateralis



Nodi Lymphatici axillares

